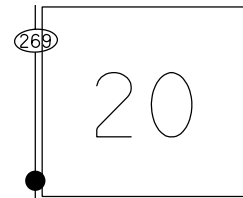


O.D.O.T. DISTRICT 2 SURVEY OFFICE (USE ONLY)

PERSONNEL _____ REFERENCE NO. 8 SHEET 2 OF 9
 NOTES NIESE DATE 9/30/21 ROUTE SR 269
 H.C. AUBLE WEATHER CLEAR COUNTY OTTAWA
 R.C. NIESE TEMP. 55° TOWNSHIP DANBURY
 SECTION 4-20
 DWG BY WHITAKER PID 95758

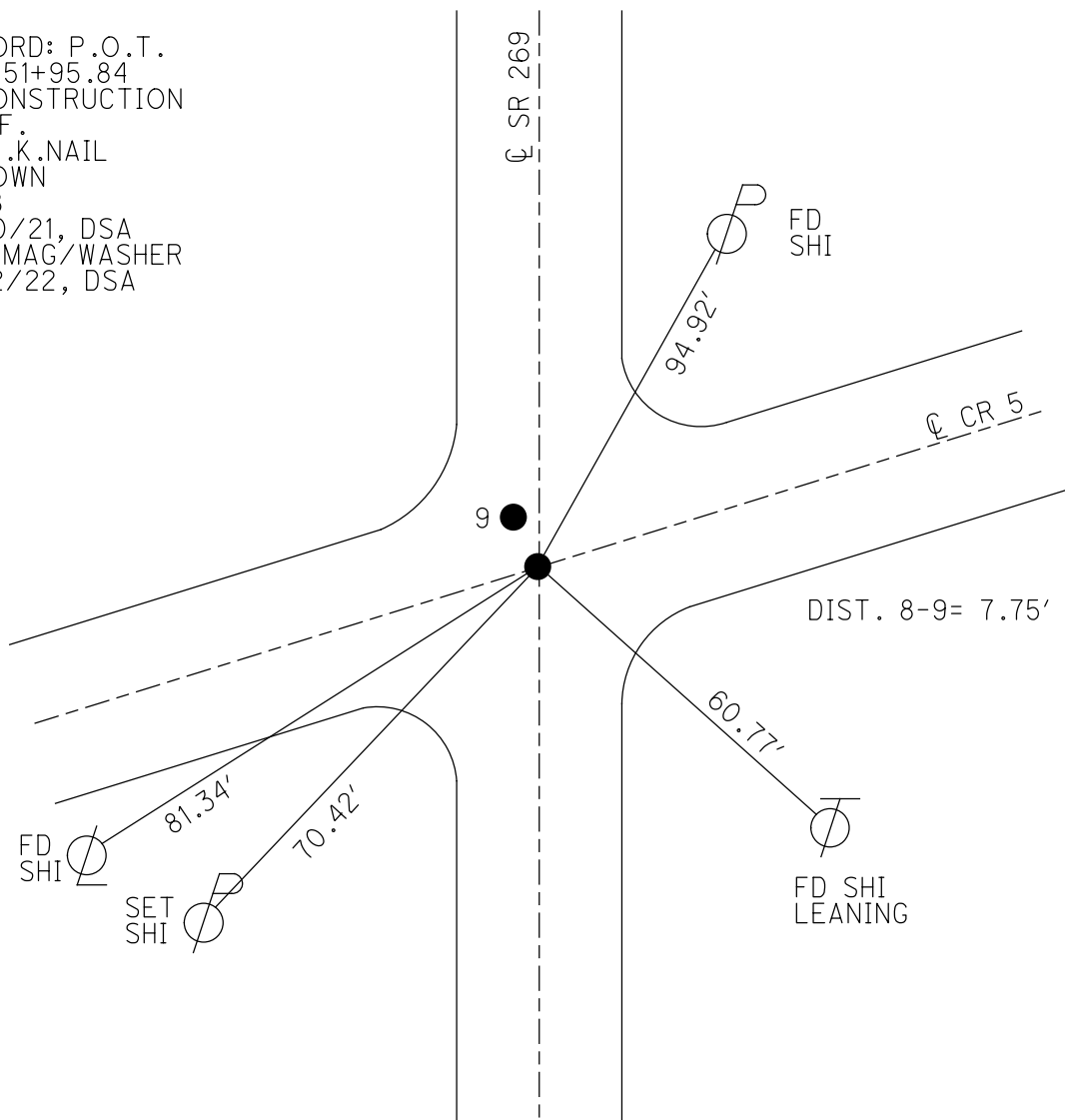
TYPE MONUMENT P.K.NAIL
~~ON SURFACE~~ - BELOW 1"
 OFFSET ☉ PAVEMENT ON LT : RT
- TO - EDGE PAVEMENT
 STATION: 140+97

NOTE:
THIS MAP IS FOR ODOT PURPOSES ONLY.
TO INDEX REFERENCE TIES, AND DOES NOT
REPRESENT TRUE LAND SUBDIVISION.



HORZ.DATUM: NAD83 (2011) GEOID: 2018
 GRID: NORTHING: 672925.523 EASTING: 1878288.623

RECORD: P.O.T.
 STA.51+95.84
 ☉ CONSTRUCTION
 D.N.F.
 FD P.K.NAIL
 1" DOWN
 REF8
 9/30/21, DSA
 SET MAG/WASHER
 7/22/22, DSA

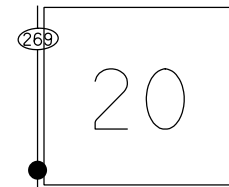


O.D.O.T. DISTRICT 2 SURVEY OFFICE (USE ONLY)

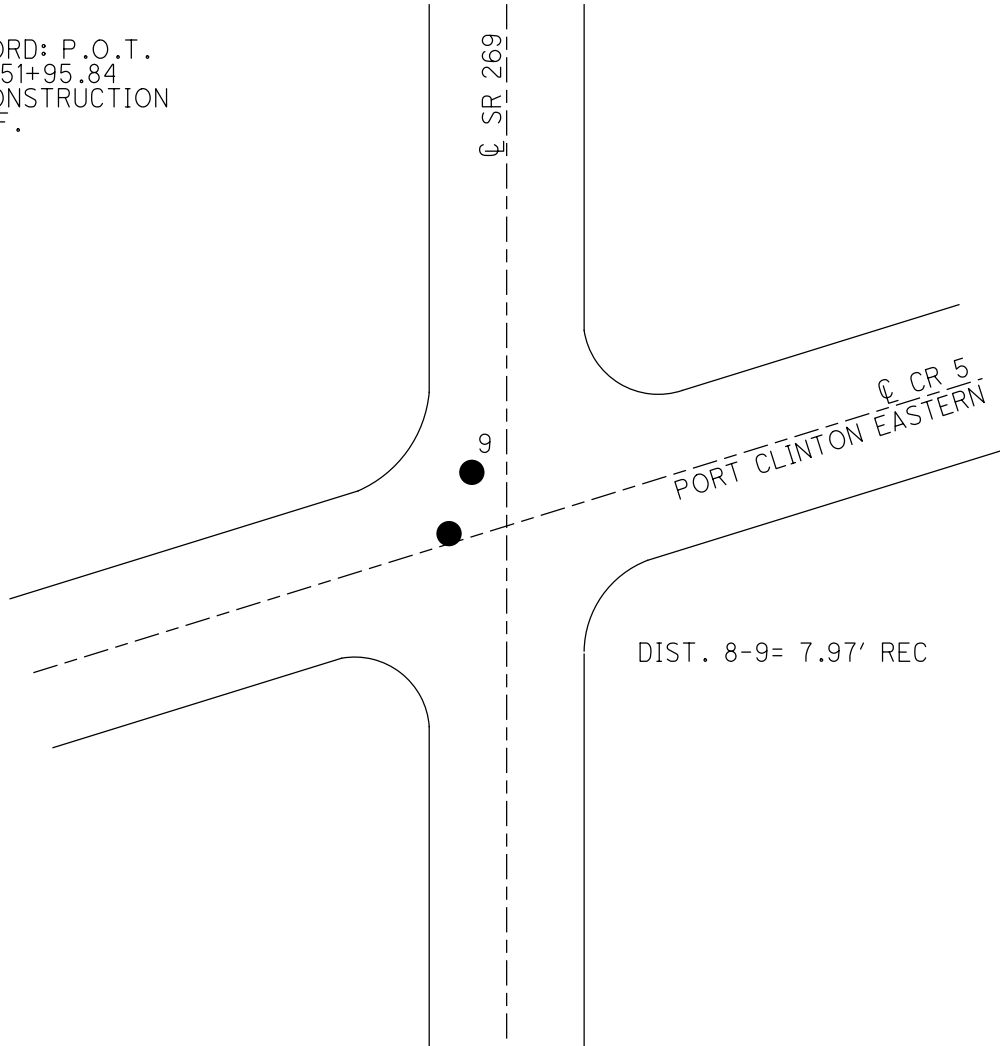
PERSONNEL _____ REFERENCE NO. 8 SHEET 2 OF 8
 NOTES BARNHISEL DATE 3/31/03 ROUTE SR 269
 H.C. BRUMBAUGH WEATHER CLEAR COUNTY OTTAWA
 R.C. GLASS TEMP. 35° TOWNSHIP DANBURY
 SECTION 4-20
 DWG BY NIESE PID PAVMT. TRAIN

TYPE MONUMENT P.K./WASHER
 ON SURFACE - BELOW _____
 OFFSET \odot PAVEMENT _____ LT : RT
 _____ TO _____ EDGE PAVEMENT
 STATION: _____
 HORZ.DATUM: _____ GEOID: _____
 GRID: NORTHING: _____ EASTING: _____

NOTE:
THIS MAP IS FOR ODOT PURPOSES ONLY
TO INDEX REFERENCE TIES, AND DOES NOT
REPRESENT TRUE LAND SUBDIVISION.



RECORD: P.O.T.
 STA. 51+95.84
 \odot CONSTRUCTION
 D.N.F.

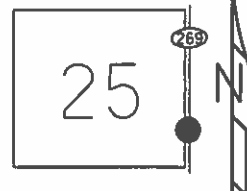


O.D.O.T. DISTRICT 2 SURVEY OFFICE (USE ONLY)

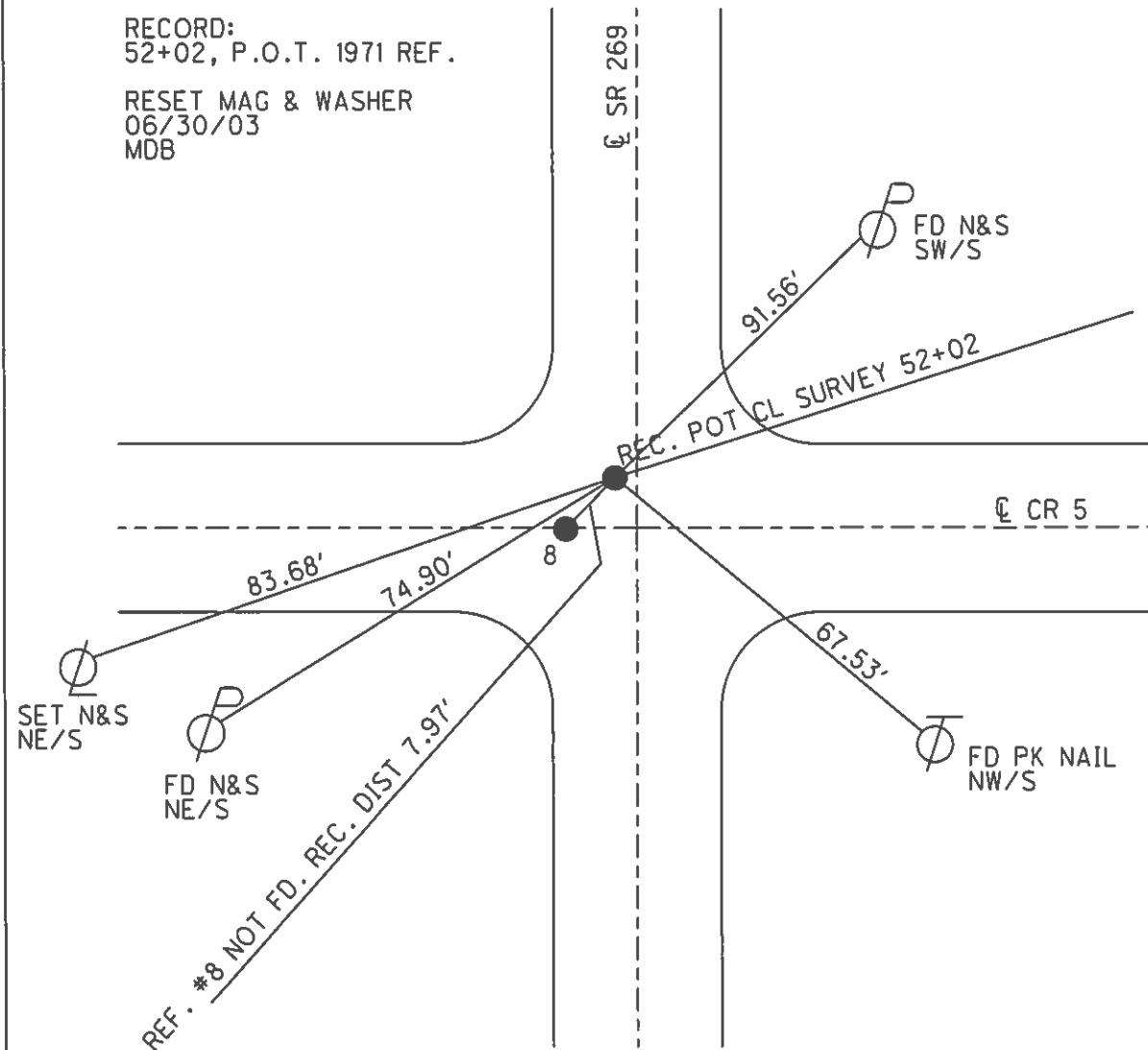
PERSONNEL _____ REFERENCE NO. 9 SHEET 3 OF 12
 NOTES BARNHISEL DATE 03/31/03 ROUTE S.R. 269
 H.C. BRUMBAUGH WEATHER CLEAR COUNTY OTTAWA
 R.C. GLASS TEMP. +35° TOWNSHIP DANBURY
 _____ SECTION 4-25

TYPE MONUMENT PK NAIL & WASHER
~~ON SURFACE~~ - BELOW 2"
 LEFT - ☉ PAV'T - ~~RIGHT~~ 2'
10.3' TO LT EDGE PAVEMENT
 S.L.M. 137+10, 4.5' N. OF ☉ PAV'T

NOTE:
THIS MAP IS FOR ODOT PURPOSES ONLY.
TO INDEX REFERENCE TIES, AND DOES NOT
REPRESENT TRUE LAND SUBDIVISION.



GRID: NORTHING: _____ EASTING: _____



RECORD:
52+02, P.O.T. 1971 REF.
RESET MAG & WASHER
06/30/03
MDB