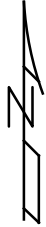
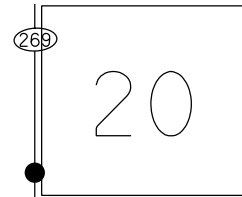


O.D.O.T. DISTRICT 2 SURVEY OFFICE (USE ONLY)

PERSONNEL \_\_\_\_\_ REFERENCE NO. 9 SHEET 3 OF 9  
 NOTES NIESE DATE 9/30/21 ROUTE SR 269  
 H.C. AUBLE WEATHER CLEAR COUNTY OTTAWA  
 R.C. NIESE TEMP. 55° TOWNSHIP DANBURY  
 SECTION 4-20  
 DWG BY WHITAKER PID 95758

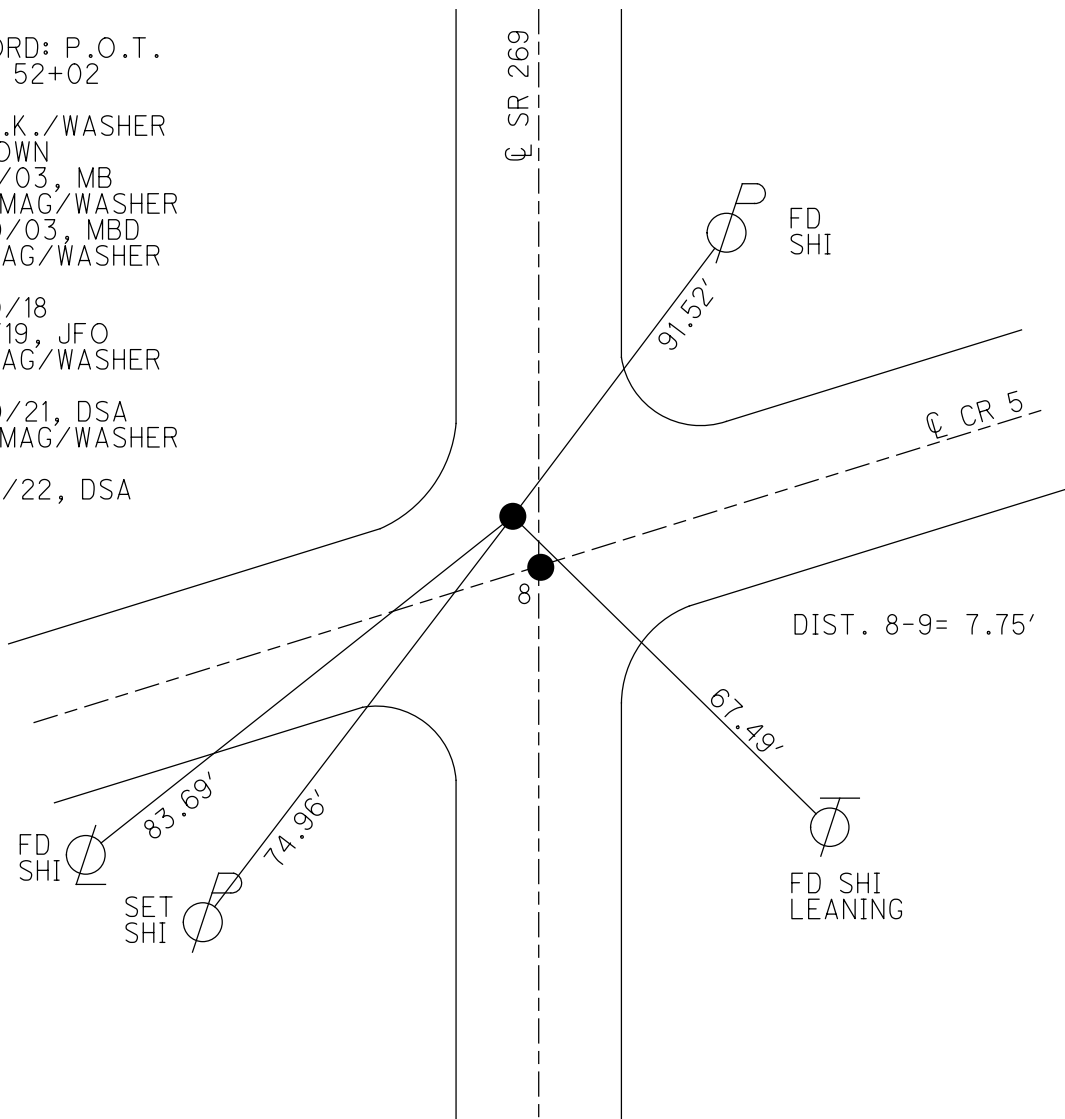
TYPE MONUMENT MAG/WASHER  
 ON SURFACE - ~~BELOW~~ ON \_\_\_\_\_  
 OFFSET  $\odot$  PAVEMENT 2.0' LT : ~~RT~~  
 - TO - EDGE PAVEMENT  
 STATION: 140+97

NOTE:  
 THIS MAP IS FOR ODOT PURPOSES ONLY.  
 TO INDEX REFERENCE TIES, AND DOES NOT  
 REPRESENT TRUE LAND SUBDIVISION.



HORZ. DATUM: NAD83(2011) GEOID: 2018  
 GRID: NORTHING: 672932.815 EASTING: 1878285.943

RECORD: P.O.T.  
 STA. 52+02  
 1971  
 FD P.K./WASHER  
 2" DOWN  
 3/31/03, MB  
 SET MAG/WASHER  
 6/30/03, MBD  
 FD MAG/WASHER  
 REF9  
 9/20/18  
 2/8/19, JFO  
 FD MAG/WASHER  
 REF9  
 9/30/21, DSA  
 SET MAG/WASHER  
 REF9  
 7/22/22, DSA

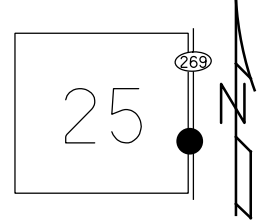


O.D.O.T. DISTRICT 2 SURVEY OFFICE (USE ONLY)

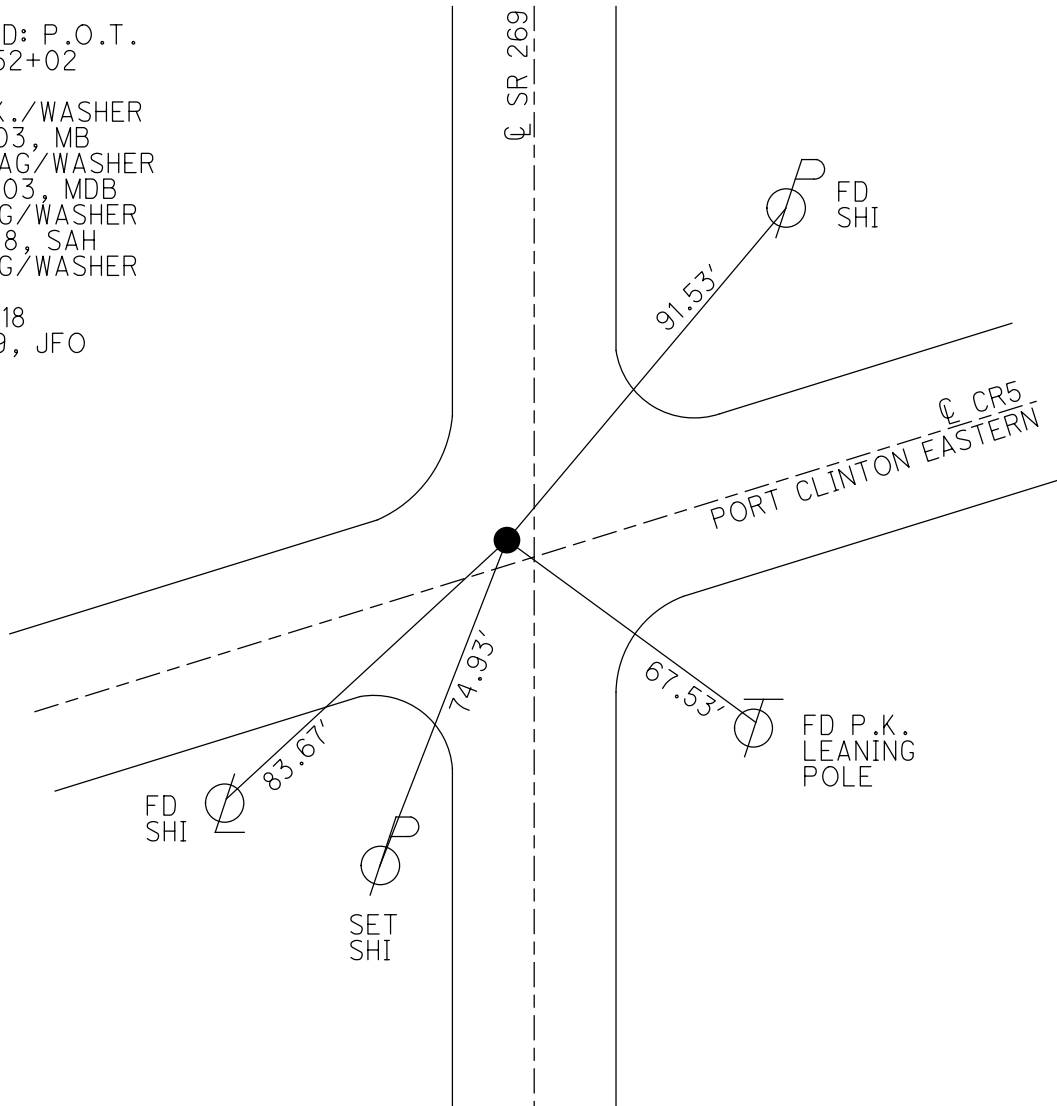
PERSONNEL \_\_\_\_\_ REFERENCE NO. 9 SHEET 2 OF 7  
 NOTES RHOADES \_\_\_\_\_ DATE 9/20/18 ROUTE SR 269  
 H.C. MILLER \_\_\_\_\_ WEATHER CLOUDY COUNTY OTTAWA  
 R.C. O'DONNELL \_\_\_\_\_ TEMP. 76° TOWNSHIP DANBURY  
 \_\_\_\_\_ SECTION 4-25

TYPE MONUMENT MAG/WASHER  
 ON SURFACE - ~~BELOW~~ ON  
 LEFT - Q PAV'T - ~~RIGHT~~ 2', 4.5' N OF Q W  
TO EDGE PAVEMENT  
 S.L.M. 140+97  
 GRID: NORTHING: 672932.815 EASTING: 1878285.943

NOTE:  
 THIS MAP IS FOR ODOT PURPOSES ONLY  
 TO INDEX REFERENCE TIES, AND DOES NOT  
 REPRESENT TRUE LAND SUBDIVISION.



RECORD: P.O.T.  
 STA. 52+02  
 1971  
 FD P.K./WASHER  
 3/31/03, MB  
 SET MAG/WASHER  
 6/30/03, MDB  
 FD MAG/WASHER  
 11/3/08, SAH  
 FD MAG/WASHER  
 REF9  
 9/20/18  
 2/8/19, JFO

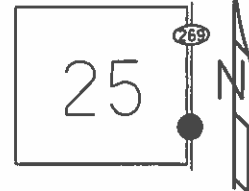


O.D.O.T. DISTRICT 2 SURVEY OFFICE (USE ONLY)

PERSONNEL \_\_\_\_\_ REFERENCE NO. 9 SHEET 3 OF 12  
 NOTES BARNHISEL DATE 03/31/03 ROUTE S.R. 269  
 H.C. BRUMBAUGH WEATHER CLEAR COUNTY OTTAWA  
 R.C. GLASS TEMP. +35° TOWNSHIP DANBURY  
 \_\_\_\_\_ SECTION 4-25

TYPE MONUMENT PK NAIL & WASHER  
~~ON SURFACE~~ - BELOW 2"  
 LEFT - ☉ PAV'T - ~~RIGHT~~ 2'  
10.3' TO LT EDGE PAVEMENT  
 S.L.M. 137+10, 4.5' N. OF ☉ PAV'T

NOTE:  
 THIS MAP IS FOR ODOT PURPOSES ONLY.  
 TO INDEX REFERENCE TIES, AND DOES NOT  
 REPRESENT TRUE LAND SUBDIVISION.



GRID: NORTHING: \_\_\_\_\_ EASTING: \_\_\_\_\_

