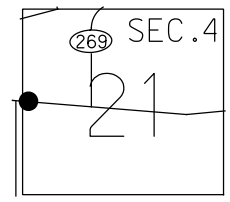


O.D.O.T. DISTRICT 2 SURVEY OFFICE (USE ONLY)

PERSONNEL _____ REFERENCE NO. 14 AB SHEET 2 OF 18
 NOTES MOSER DATE 5/5/11 ROUTE SR 269
 H.C. MOSER WEATHER SUNNY COUNTY OTTAWA
 R.C. LUMBREZER TEMP. 60° TOWNSHIP DANBURY
 SECTION 4-21
 DWG BY NIESE PID PAV'T TRAIN

NOTE: THIS MAP IS FOR ODOT PURPOSES ONLY TO INDEX REFERENCE TIES, AND DOES NOT REPRESENT TRUE LAND SUBDIVISION.

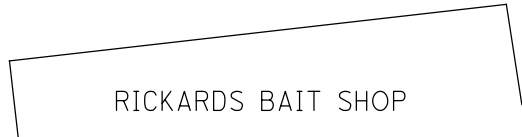
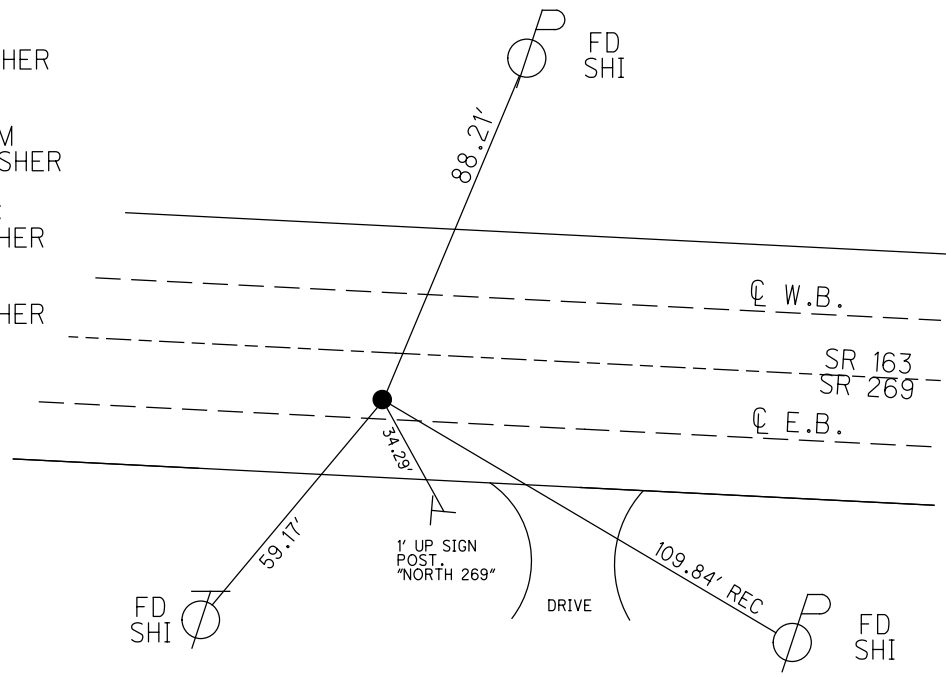
TYPE MONUMENT P.K./WASHER
~~ON SURFACE~~ - BELOW 1"
 OFFSET \odot PAVEMENT 11.2' \pm : RT
16.4' TO RT EDGE PAVEMENT
 STATION: 205+90.3



HORIZ.DATUM: NAD83(2011) GEOID: 2012A
 GRID: NORTHING: 679598.511 EASTING: 1878282.014

NOTE: REF 132A SR 163

RECORD: P.I.
 STA. 255+82.65
 SET P.K./WASHER
 OVER R.R.SPIKE
 2" DOWN
 1983
 FD P.K./WASHER
 9/28/09
 SV102
 4/23/10, KPM
 SET MAG/WASHER
 FINREFA132
 9/17/12, SDC
 FD MAG/WASHER
 REFA132
 1/16/13, MC
 FD MAG/WASHER
 REFAB14
 9/26/18
 2/8/19, JFO



O.D.O.T. DISTRICT 2 SURVEY OFFICE (USE ONLY)

PERSONNEL _____ REFERENCE NO. 14 AB SHEET 2 OF 18
 NOTES MOSE DATE 5/5/11 ROUTE SR 269
 H.C. MOSE WEATHER SUNNY COUNTY OTTAWA
 R.C. LUMBREZER TEMP. 60° TOWNSHIP DANBURY
 _____ SECTION 4-21

TYPE MONUMENT P.K./WASHER

NOTE: THIS MAP IS FOR ODOT PURPOSES ONLY TO INDEX REFERENCE TIES, AND DOES NOT REPRESENT TRUE LAND SUBDIVISION.

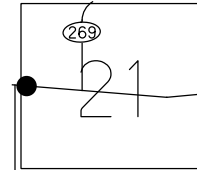
~~ON SURFACE~~ - BELOW 1"

~~LEFT~~ - Q PAV'T - RIGHT 11.2'

16.4' TO RT EDGE PAVEMENT

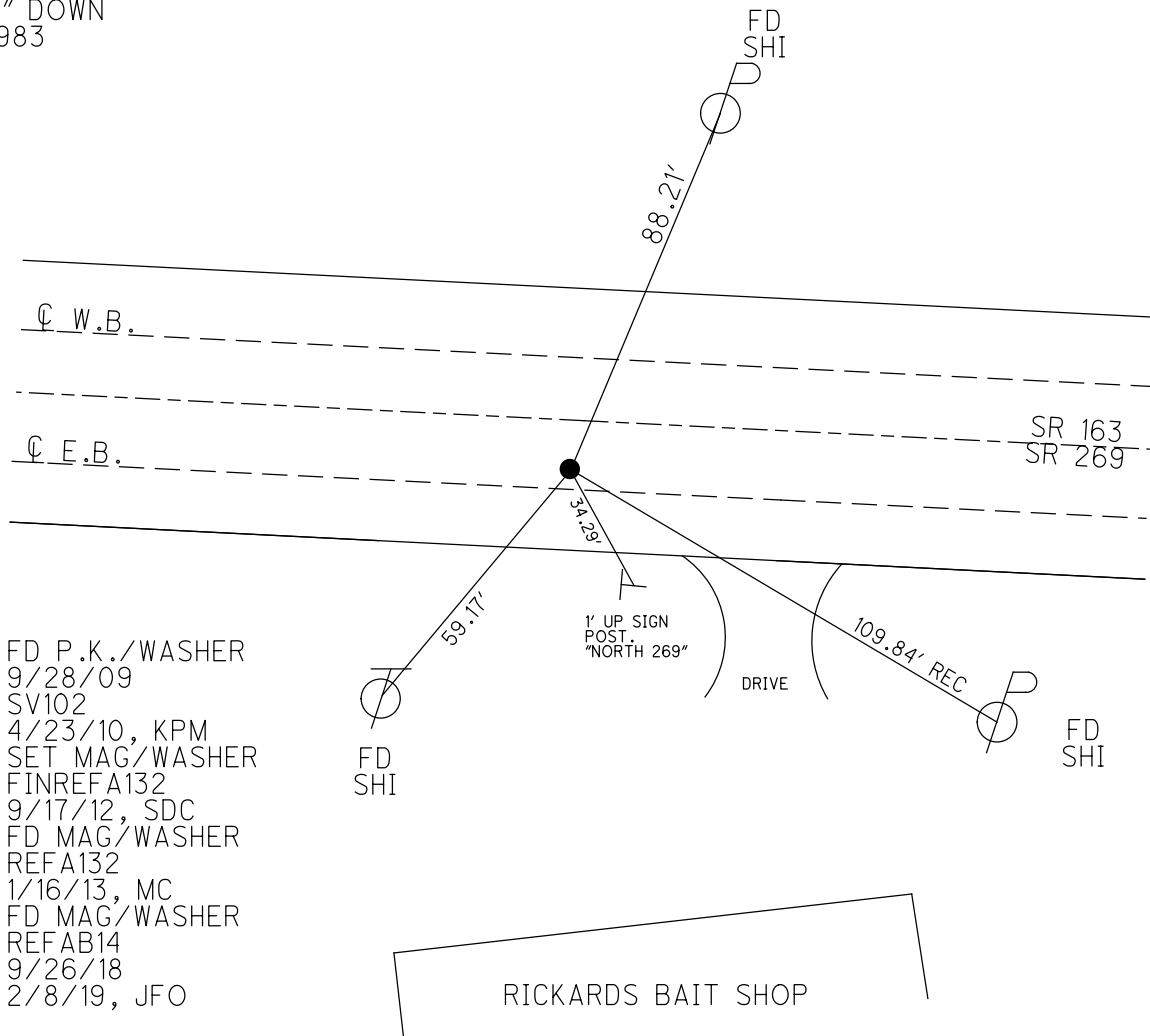
S.L.M. 205+90.3

GRID: NORTHING: 679598.511 EASTING: 1878282.014



RECORD: P.I.
 STA. 255+82.65
 SET P.K./WASHER
 OVER R.R.SPIKE
 2" DOWN
 1983

NOTE: REF 132A SR 163



FD P.K./WASHER
 9/28/09
 SV102
 4/23/10, KPM
 SET MAG/WASHER
 FINREFA132
 9/17/12, SDC
 FD MAG/WASHER
 REFA132
 1/16/13, MC
 FD MAG/WASHER
 REFAB14
 9/26/18
 2/8/19, JFO

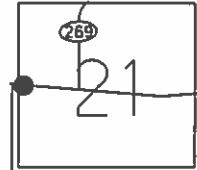
RICKARDS BAIT SHOP

O.D.O.T. DISTRICT 2 SURVEY OFFICE (USE ONLY)

PERSONNEL	REFERENCE NO.	14 AB	SHEET	2	OF	18
NOTES	MOSER	DATE	5/5/11	ROUTE	SR 269	
H.C.	MOSER	WEATHER	SUNNY	COUNTY	OTTAWA	
R.C.	LUMBREZER	TEMP.	60°	TOWNSHIP	DANBURY	
				SECTION	4-21	

TYPE MONUMENT P.K./WASHER
~~ON SURFACE~~ - BELOW 1"
~~LEFT~~ - CL PAV'T - RIGHT 11.2'
16.4' TO RT EDGE PAVEMENT
 S.L.M. 205+90.3

NOTE:
THIS MAP IS FOR DDOT PURPOSES ONLY
TO INDEX REFERENCE TIES, AND DOES NOT
REPRESENT TRUE LAND SUBDIVISION.



GRID: NORTHING: 679598.584 EASTING: 1878281.975

1983 RECORD
 P.I. 255+82.65
 SET P.K./WASHER
 OVER R.R.SPIKE
 2" BELOW SURFACE
 5' LT CL EB LANES
 ± 157' E. SR269 SOUTH

FD P.K./WASHER
 9/28/09
 GPS, SV102
 4/23/10, KPM
 SET MAG/WASHER
 GPS, FINREFA132
 9/17/12, SDC
 FD MAG/WASHER
 GPS, REFA132
 1/16/13, MC

