

O.D.O.T. DISTRICT 2 SURVEY OFFICE (USE ONLY)

PERSONNEL

REFERENCE NO. CP 20

SHEET 1 OF 5

NOTES HOMAN

DATE 11/18/09

ROUTE SR 357

H.C. HOMAN

WEATHER CLOUDY

COUNTY OTTAWA

R.C. ROUSOS

TEMP. 45°

SOUTH BASS

HARBAUGH

ISLAND

DWG BY RHOADES PID 25525

TYPE MONUMENT 1/2" IPIN

~~ON SURFACE~~ - BELOW 4"

OFFSET Q PAVEMENT 3' LT : ~~RT~~

- TO - EDGE PAVEMENT

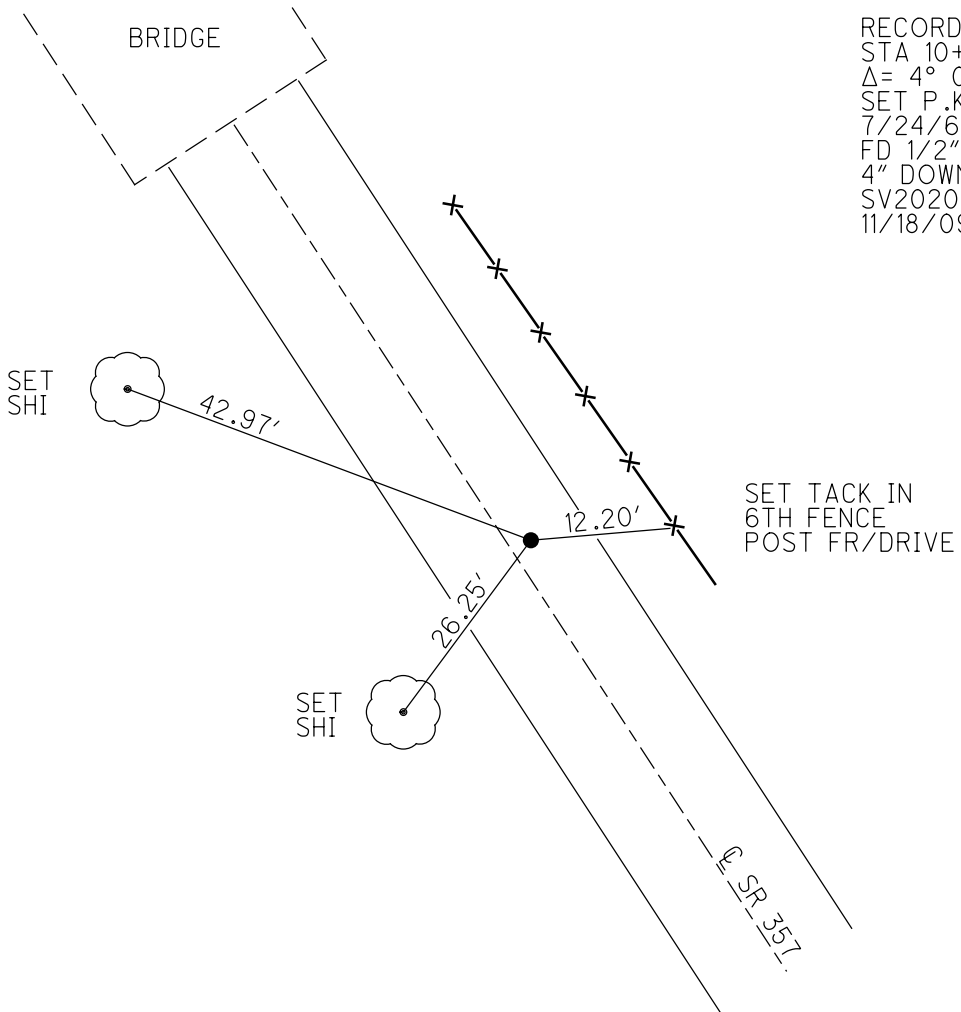
STATION: 10+32.22

HORIZ.DATUM: NAD 1983

GEOID: 2003

GRID: NORTHING: 725238.760

EASTING: 1879251.537



RECORD: P.I.
STA 10+58.92
 $\Delta = 4^{\circ} 06' RT$
SET P.K.NAIL
7/24/61, CRONIN
FD 1/2" IPIN
4" DOWN
SV2020
11/18/09, DCH

O.D.O.T. DISTRICT 2 SURVEY OFFICE (USE ONLY)

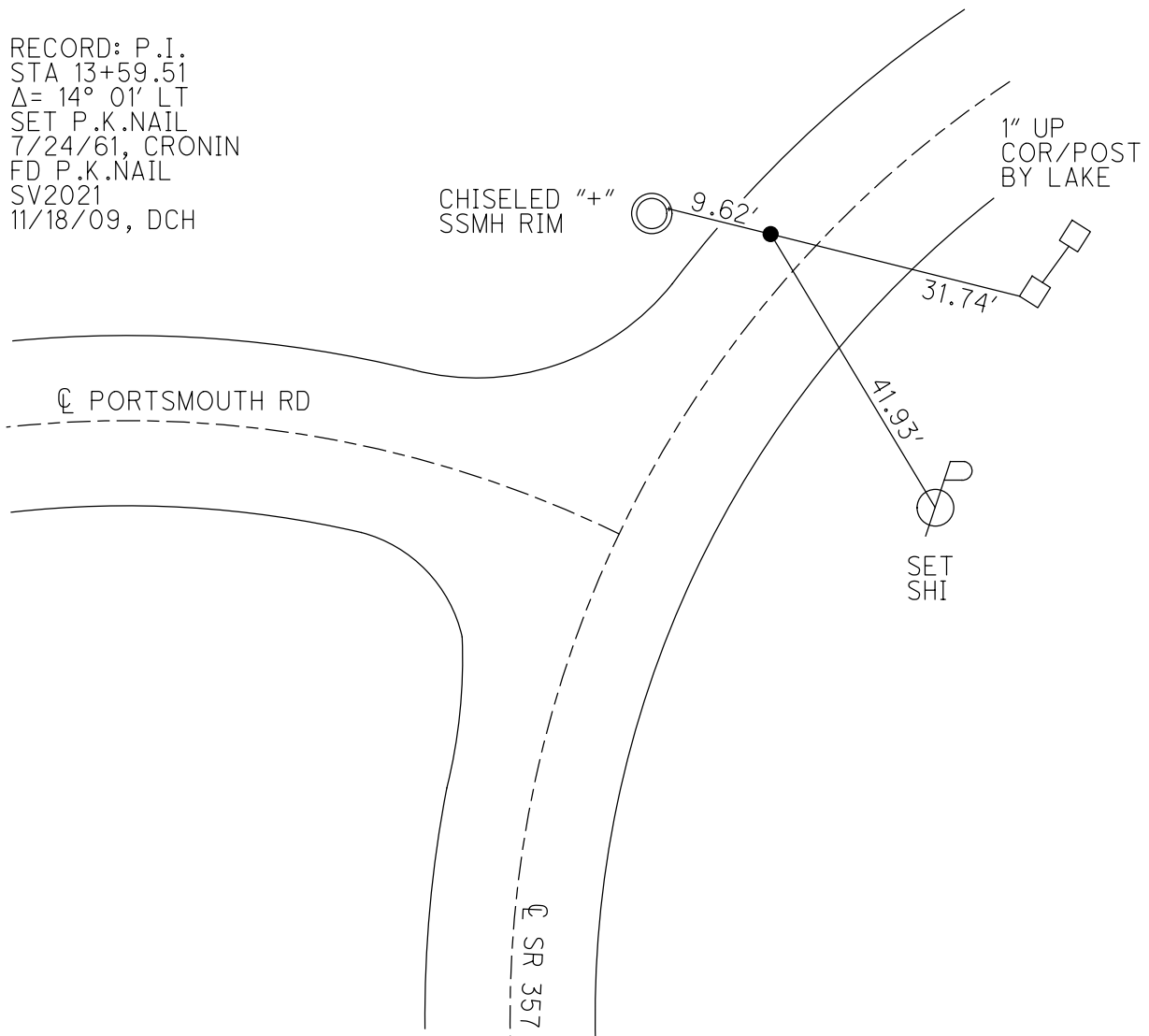
PERSONNEL _____ REFERENCE NO. CP 21 SHEET 2 OF 5
 NOTES HOMAN DATE 11/18/09 ROUTE SR 357
 H.C. HOMAN WEATHER CLOUDY COUNTY OTTAWA
 R.C. ROUSOS TEMP. 45° SOUTH BASS
HARBAUGH ISLAND
 DWG BY RHOADES PID 25525

TYPE MONUMENT P.K.NAIL
 ON SURFACE - ~~BELOW~~ ON
 OFFSET ☐ PAVEMENT 6.77' ~~±~~ : RT
- TO - EDGE PAVEMENT
 STATION: 14+27.39

HORZ.DATUM: NAD 1983 GEOID: 2003
 GRID: NORTHING: 724881.546 EASTING: 1879255.504



RECORD: P.I.
 STA 13+59.51
 $\Delta = 14^\circ 01' \text{ LT}$
 SET P.K.NAIL
 7/24/61, CRONIN
 FD P.K.NAIL
 SV2021
 11/18/09, DCH



O.D.O.T. DISTRICT 2 SURVEY OFFICE (USE ONLY)

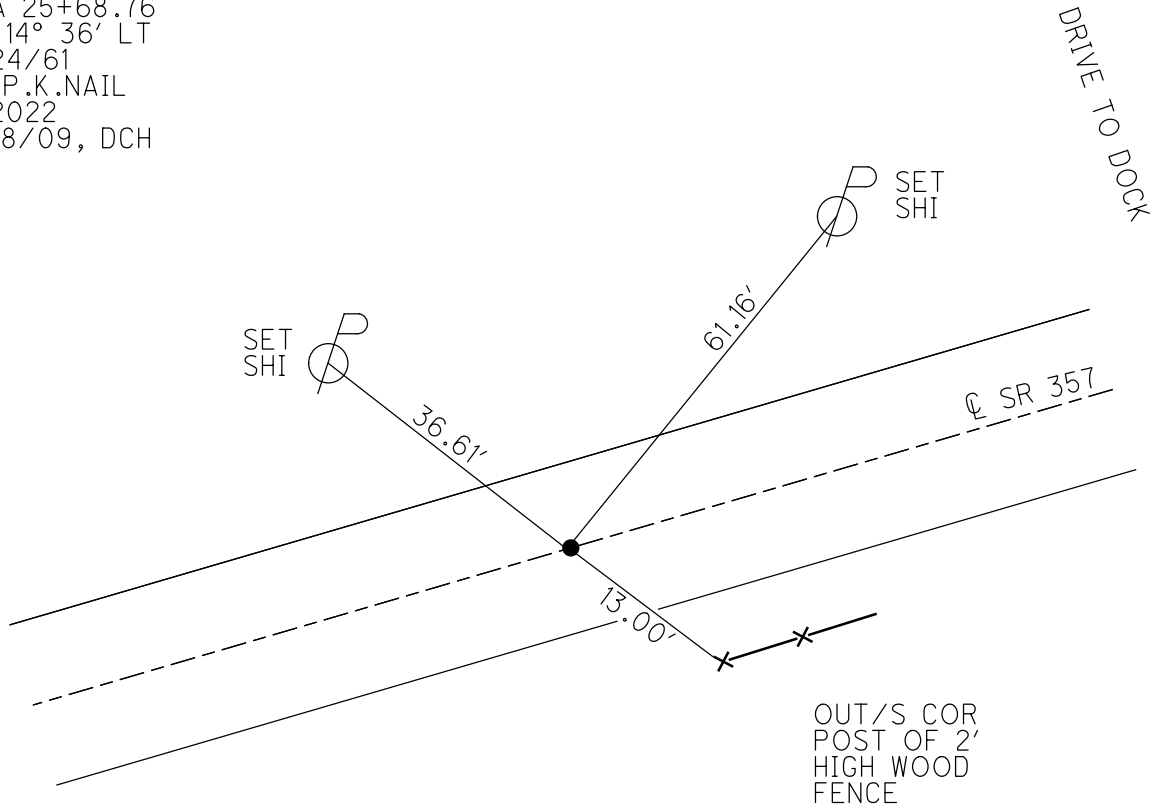
PERSONNEL _____ REFERENCE NO. CP 22 SHEET 3 OF 5
 NOTES HOMAN DATE 11/18/09 ROUTE SR 357
 H.C. HOMAN WEATHER CLOUDY COUNTY OTTAWA
 R.C. ROUSOS TEMP. 45° SOUTH BASS
HARBAUGH ISLAND
 DWG BY RHOADES PID 25525

TYPE MONUMENT P.K.NAIL
 ON SURFACE - ~~BELOW~~ ON _____
 OFFSET \odot PAVEMENT ON _____ LT : RT
 _____ TO _____ EDGE PAVEMENT
 STATION: 25+69.03

HORIZ.DATUM: NAD 1983 GEOID: 2003
 GRID: NORTHING: 724330.681 EASTING: 1879915.804



RECORD: P.I.
 STA 25+68.76
 $\Delta = 14^\circ 36' \text{ LT}$
 7/24/61
 FD P.K.NAIL
 SV2022
 11/18/09, DCH



O.D.O.T. DISTRICT 2 SURVEY OFFICE (USE ONLY)

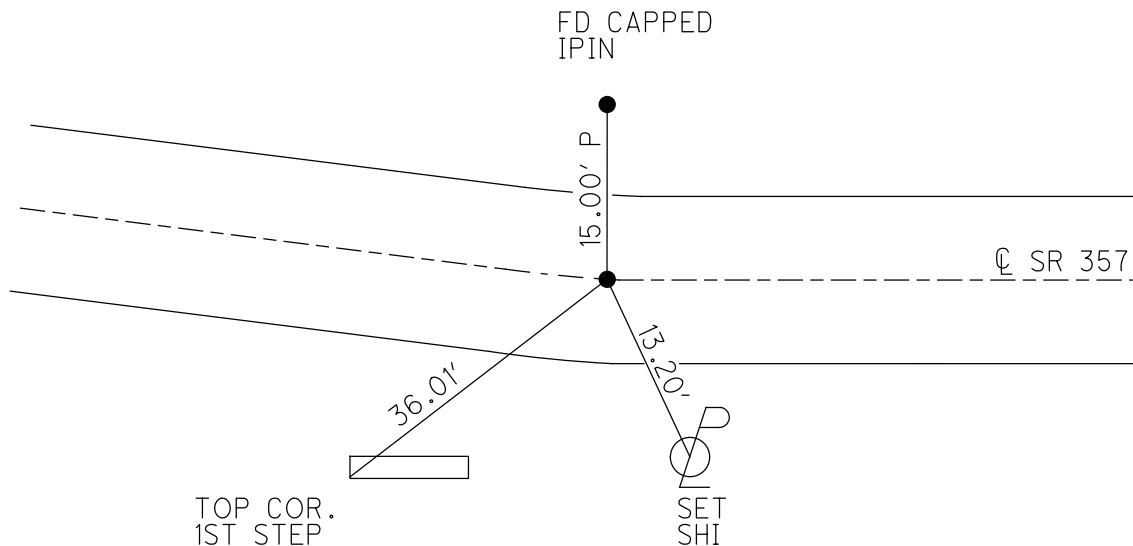
PERSONNEL _____ REFERENCE NO. CP 6 SHEET 4 OF 5
NOTES HOMAN DATE 11/18/09 ROUTE SR 357
H.C. HOMAN WEATHER CLOUDY COUNTY OTTAWA
R.C. ROUSOS TEMP. 45° SOUTH BASS
HARBAUGH ISLAND
DWG BY RHOADES PID 25525

TYPE MONUMENT MAG NAIL
ON SURFACE - ~~BELOW~~ ON
OFFSET ☉ PAVEMENT ON LT : RT
- TO - EDGE PAVEMENT
STATION: 37+03.13

HORIZ.DATUM: NAD 1983 GEOID: 2003
GRID: NORTHING: 724017.507 EASTING: 1880898.452



RECORD: P.I.
STA 36+85.68
 $\Delta = 7^\circ 34' RT$
7/24/61
FD MAG NAIL
CP6
11/18/09, DCH



O.D.O.T. DISTRICT 2 SURVEY OFFICE (USE ONLY)

PERSONNEL

REFERENCE NO. CP 7

SHEET 1 OF 5

NOTES HOMAN

DATE 11/18/09

ROUTE SR 357

H.C. HOMAN

WEATHER CLOUDY

COUNTY OTTAWA

R.C. ROUSOS

TEMP. 45°

SOUTH BASS

HARBAUGH

ISLAND

DWG BY RHOADES

PID 25525

TYPE MONUMENT R.R.SPIKE

~~ON SURFACE~~ - BELOW 1 1/2"

OFFSET \varnothing PAVEMENT ON LT : ~~RT~~

- TO - EDGE PAVEMENT

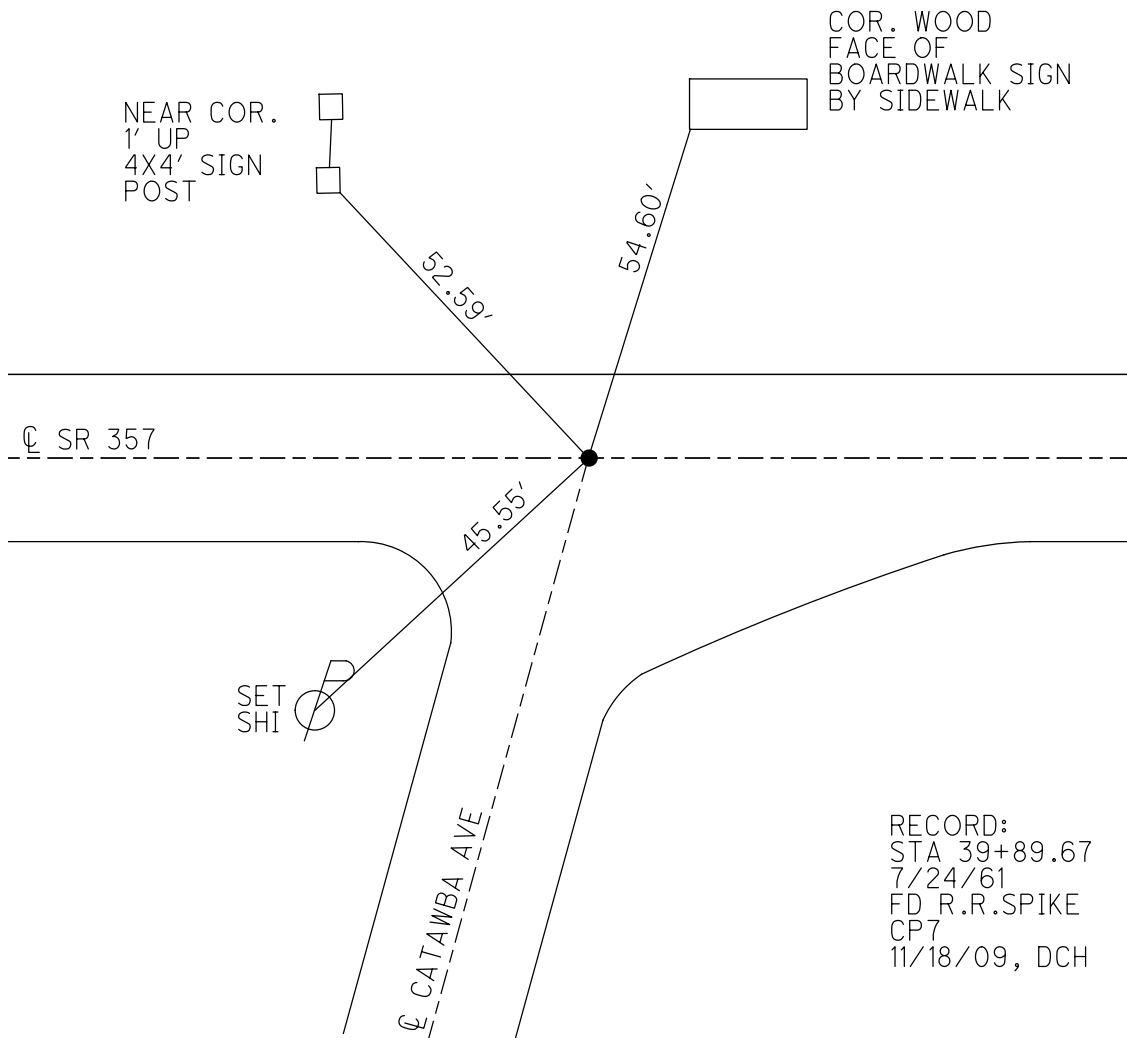
STATION: 39+82.33

HORZ.DATUM: NAD 1983

GEOID: 2003

GRID: NORTHING: 724012.639

EASTING: 1881177.556



O.D.O.T. DISTRICT 2 SURVEY OFFICE (USE ONLY)

PERSONNEL _____ REFERENCE NO. 1 SHEET 1 OF 27
 NOTES HOMAN DATE 9/25/12 ROUTE SR 357
 H.C. HOMAN WEATHER PTLY CLOUDY COUNTY OTTAWA
 R.C. ROUSOS TEMP. 53° SOUTH BASS ISLAND

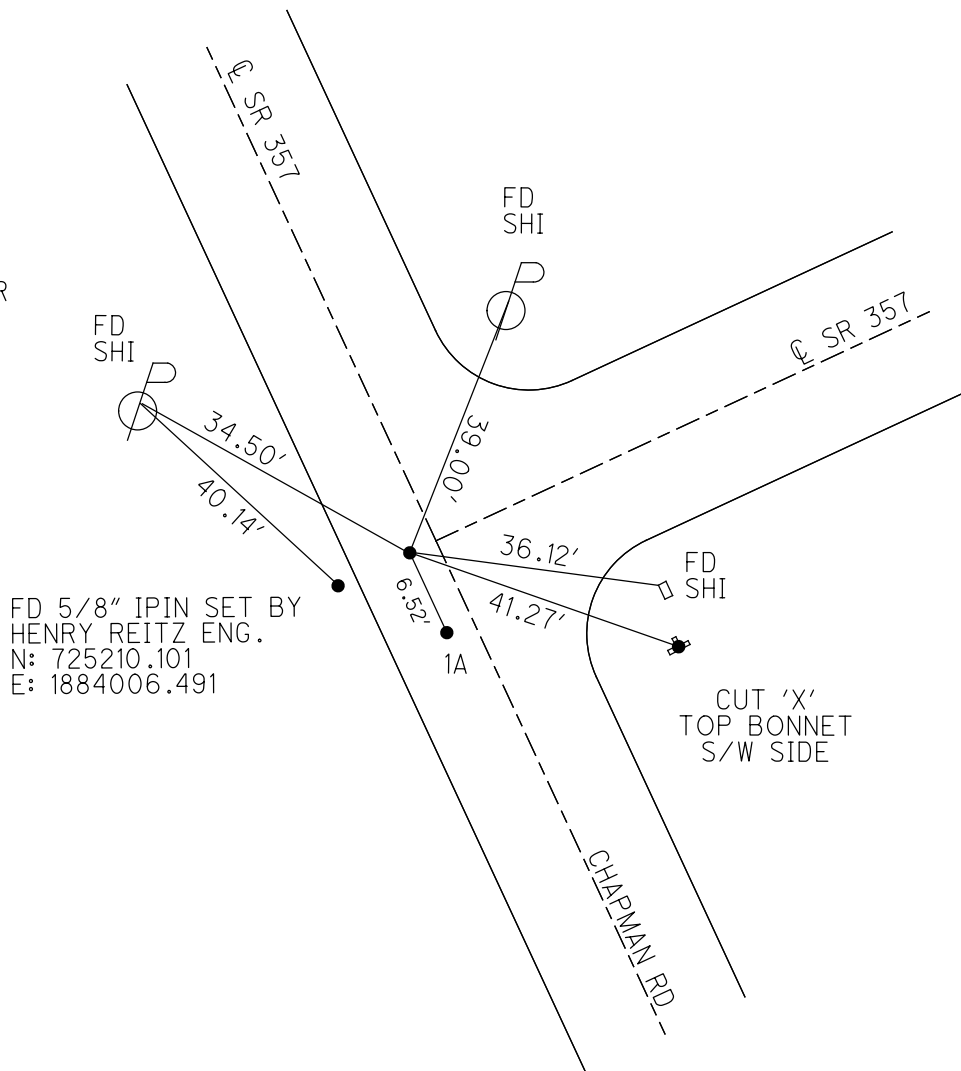
DWG BY RHOADES PID 25525

TYPE MONUMENT P.K.NAIL
 ON SURFACE - ~~BELOW~~ ON _____
 OFFSET \odot PAVEMENT - _____ LT : RT
 - _____ TO - _____ EDGE PAVEMENT
 STATION: 76+33.57

HORZ.DATUM: NAD 1983 GEOID: 2003
 GRID: NORTHING: 725224.759 EASTING: 1884020.802



RECORD: P.I.
 STA 75+45.84
 $\Delta = 68^{\circ}16' LT$
 7/24/61
 FD P.K.NAIL
 RSV133
 9/20/07, RGN
 FD P.K.NAIL
 RSV133
 11/18/09
 SET MAG/WASHER
 11/25/12, DCH



O.D.O.T. DISTRICT 2 SURVEY OFFICE (USE ONLY)

PERSONNEL _____ REFERENCE NO. 1 A SHEET 2 OF 27
NOTES HOMAN DATE 11/25/12 ROUTE SR 357
H.C. HOMAN WEATHER PTLY CLOUDY COUNTY OTTAWA
R.C. ROUSOS TEMP. 53° SOUTH BASS
ISLAND

DWG BY RHOADES PID 25525

TYPE MONUMENT P.K.NAIL

~~ON SURFACE~~ - BELOW 0.3'

OFFSET \odot PAVEMENT - LT : RT

- TO - EDGE PAVEMENT

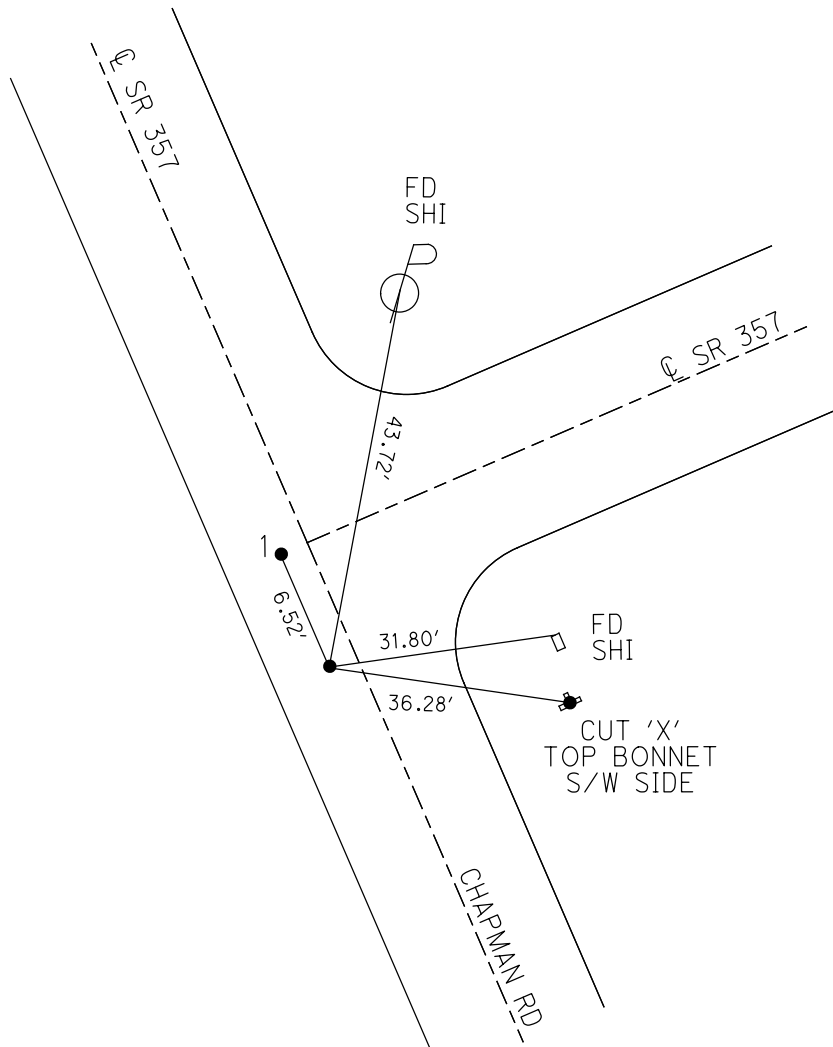
STATION: 76+33.57

HORIZ.DATUM: NAD 1983 GEOID: 2003

GRID: NORTHING: 725220.339 EASTING: 1884025.199



RECORD:
FD IPIPE
0.3' DOWN
RSV139
9/20/07, RGN
POINT RECOVERED
RSV139
9/25/12, DCH



O.D.O.T. DISTRICT 2 SURVEY OFFICE (USE ONLY)

PERSONNEL _____ REFERENCE NO. 2 SHEET 3 OF 27

NOTES HOMAN DATE 9/25/12 ROUTE SR 357

H.C. HOMAN WEATHER PTLY CLOUDY COUNTY OTTAWA

R.C. ROUSOS TEMP. 53° SOUTH BASS ISLAND

DWG BY RHOADES PID 25525

TYPE MONUMENT P.K.NAIL

ON SURFACE - ~~BELOW~~ ON _____

OFFSET ϕ PAVEMENT 4.6' ~~LT~~ : RT

5.0' TO RT EDGE PAVEMENT

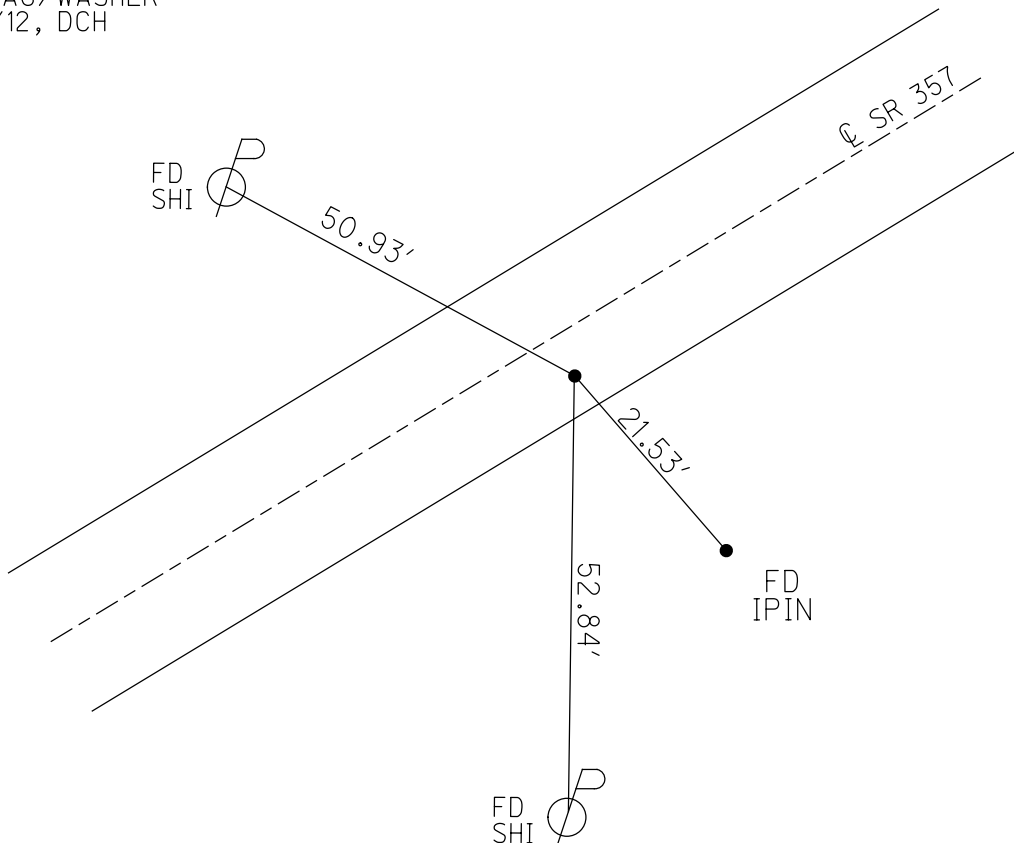
STATION: 78+30.86

HORZ.DATUM: NAD 1983 GEOID: 2003

GRID: NORTHING: 725293.120 EASTING: 1884190.131



RECORD:
FD P.K.NAIL
RSV134
9/20/07, RGN
POINT RECOVERED
RSV134
9/25/12
SET MAG/WASHER
11/25/12, DCH



O.D.O.T. DISTRICT 2 SURVEY OFFICE (USE ONLY)

PERSONNEL _____ REFERENCE NO. 3 SHEET 4 OF 27
NOTES HOMAN DATE 11/25/12 ROUTE SR 357
H.C. HOMAN WEATHER PTLY CLOUDY COUNTY OTTAWA
R.C. ROUSOS TEMP. 53° SOUTH BASS
ISLAND

DWG BY RHOADES PID 25525

TYPE MONUMENT P.K.NAIL

ON SURFACE - ~~BELOW~~ ON _____

OFFSET CL PAVEMENT 4.0' ~~RT~~ : RT

5.52' TO RT EDGE PAVEMENT

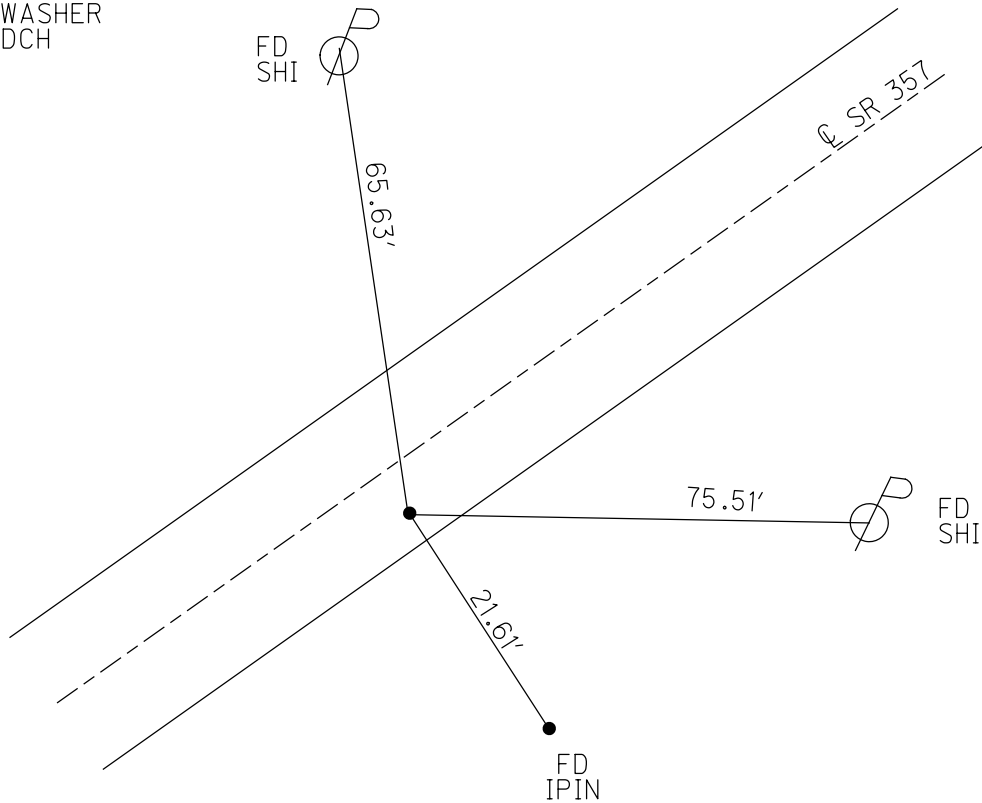
STATION: 79+36.90

HORIZ.DATUM: NAD 1983 GEOID: 2003

GRID: NORTHING: 725339.428 EASTING: 1884283.794



RECORD:
FD P.K.NAIL
RSV141
9/20/07, RGN
POINT RECOVERED
RSV141
9/25/12
SET MAG/WASHER
11/25/12, DCH



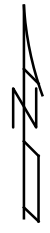
O.D.O.T. DISTRICT 2 SURVEY OFFICE (USE ONLY)

PERSONNEL _____ REFERENCE NO. 4 SHEET 5 OF 27
NOTES HOMAN DATE 11/25/12 ROUTE SR 357
H.C. HOMAN WEATHER PTLY CLOUDY COUNTY OTTAWA
R.C. ROUSOS TEMP. 53° SOUTH BASS
ISLAND

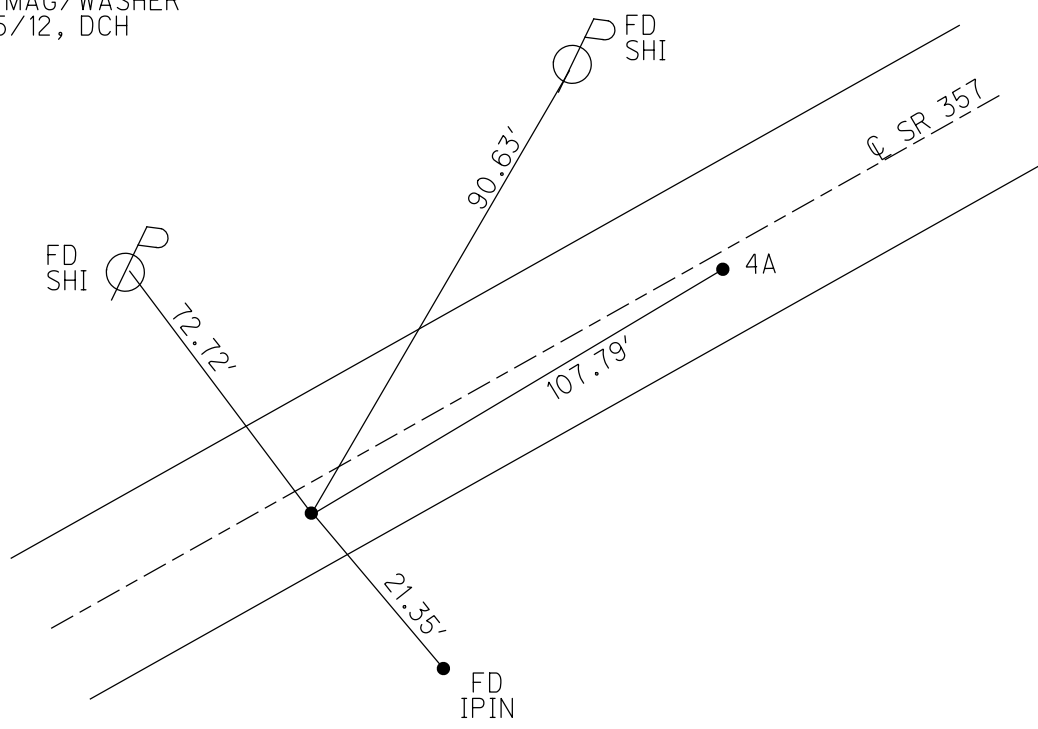
DWG BY RHOADES PID 25525

TYPE MONUMENT P.K.NAIL
ON SURFACE - ~~BELOW~~ ON _____
OFFSET \odot PAVEMENT 1.8' ~~LT~~ : RT
7.6' TO RT EDGE PAVEMENT
STATION: 82+69.16

HORZ.DATUM: NAD 1983 GEOID: 2003
GRID: NORTHING: 725767.631 EASTING: 1885213.168



RECORD:
FD P.K.NAIL
RSV135
9/20/07, RGN
POINT RECOVERED
RSV135
9/25/12
SET MAG/WASHER
11/25/12, DCH



O.D.O.T. DISTRICT 2 SURVEY OFFICE (USE ONLY)

PERSONNEL _____ REFERENCE NO. 4 A SHEET 6 OF 27
 NOTES HOMAN DATE 11/25/12 ROUTE SR 357
 H.C. HOMAN WEATHER PTLY CLOUDY COUNTY OTTAWA
 R.C. ROUSOS TEMP. 53° SOUTH BASS ISLAND

DWG BY RHOADES PID 25525

TYPE MONUMENT P.K.NAIL

ON SURFACE - ~~BELOW~~ ON _____

OFFSET 0.85' ~~±~~ : RT

8.0' TO RT EDGE PAVEMENT

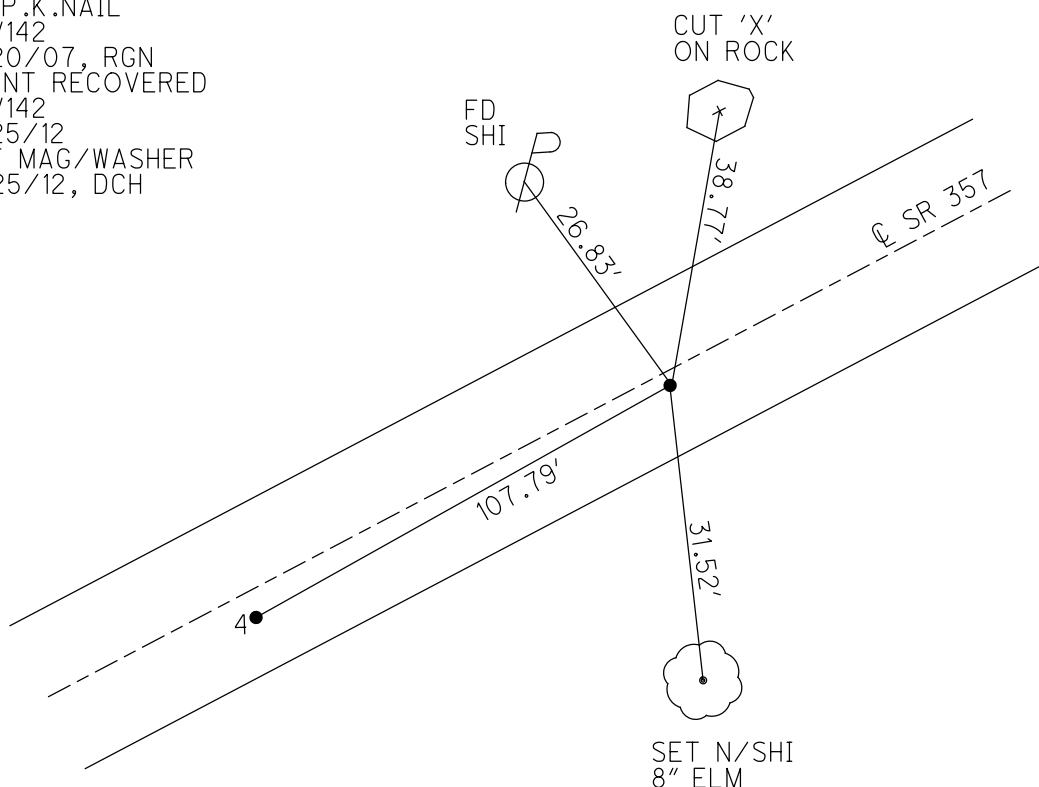
STATION: 83+76.95

HORZ.DATUM: NAD 1983 GEOID: 2003

GRID: NORTHING: 725523.95 EASTING: 1884683.183



RECORD:
 FD P.K.NAIL
 RSV142
 9/20/07, RGN
 POINT RECOVERED
 RSV142
 9/25/12
 SET MAG/WASHER
 11/25/12, DCH



O.D.O.T. DISTRICT 2 SURVEY OFFICE (USE ONLY)

PERSONNEL _____ REFERENCE NO. 5 SHEET 7 OF 27
 NOTES HOMAN DATE 11/25/12 ROUTE SR 357
 H.C. HOMAN WEATHER PTLY CLOUDY COUNTY OTTAWA
 R.C. ROUSOS TEMP. 53° SOUTH BASS
 _____ ISLAND

DWG BY RHOADES PID 25525

TYPE MONUMENT P.K.NAIL

ON SURFACE - ~~BELOW~~ ON

OFFSET 0.8' ~~±~~ : RT

8.4' TO RT EDGE PAVEMENT

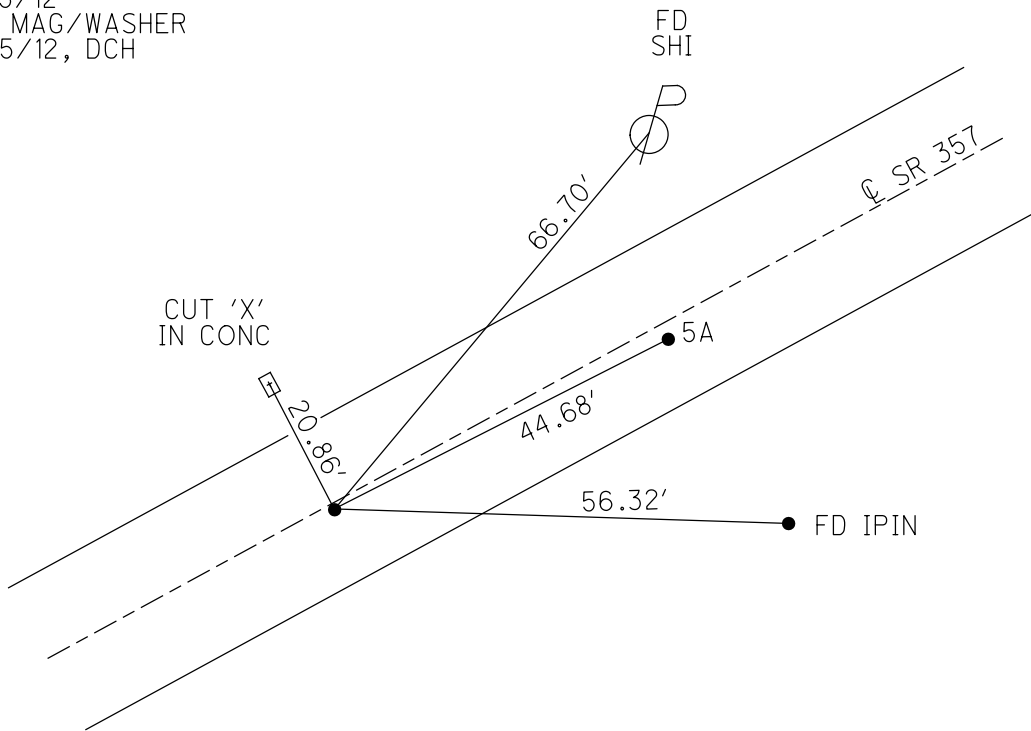
STATION: 85+10.55

HORIZ.DATUM: NAD 1983 GEOID: 2003

GRID: NORTHING: 725579.514 EASTING: 1884804.753



RECORD:
 FD P.K.NAIL
 RSV143
 9/20/07, RGN
 POINT RECOVERED
 RSV143
 9/25/12
 SET MAG/WASHER
 11/25/12, DCH



O.D.O.T. DISTRICT 2 SURVEY OFFICE (USE ONLY)

PERSONNEL

REFERENCE NO. 5 A

SHEET 8 OF 27

NOTES HOMAN

DATE 11/25/12

ROUTE SR 357

H.C. HOMAN

WEATHER PTLY CLOUDY

COUNTY OTTAWA

R.C. ROUSOS

TEMP. 53°

SOUTH BASS

ISLAND

DWG BY RHOADES PID 25525

TYPE MONUMENT P.K.NAIL

ON SURFACE - ~~BELOW~~ ON _____

OFFSET \odot PAVEMENT 1.0' ~~±~~ : RT

8.25' TO RT EDGE PAVEMENT

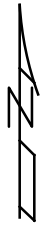
STATION: 85+55.23

HORZ.DATUM: NAD 1983

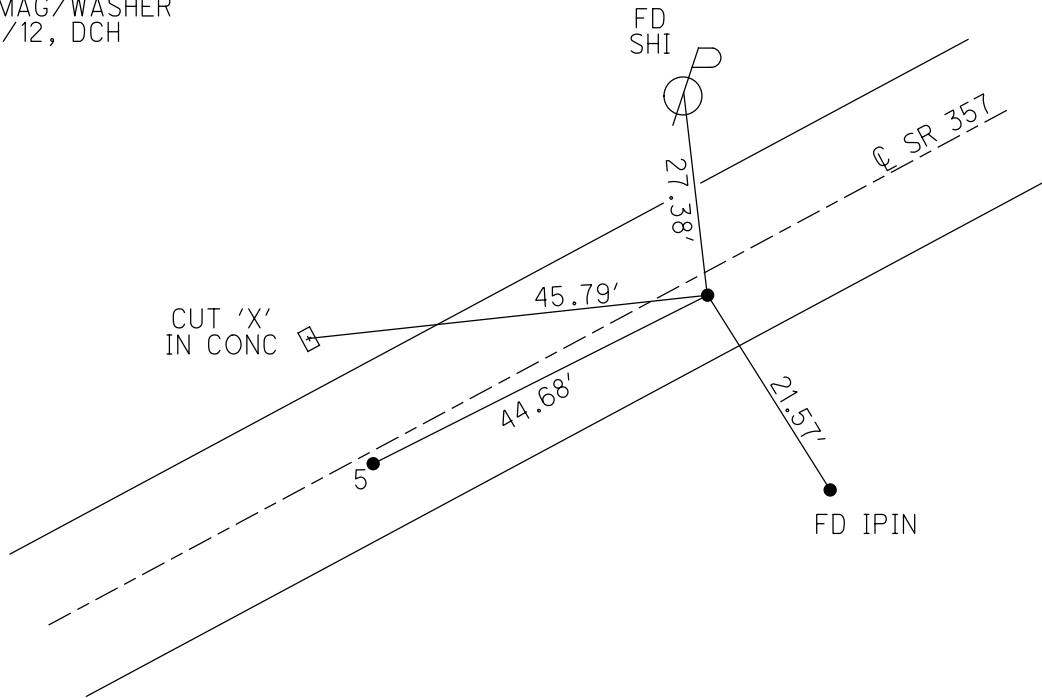
GEOID: 2003

GRID: NORTHING: 725598.212

EASTING: 1884845.307



RECORD:
FD P.K.NAIL
RSV144
9/20/07, RGN
POINT RECOVERED
RSV144
9/25/12
SET MAG/WASHER
11/25/12, DCH



O.D.O.T. DISTRICT 2 SURVEY OFFICE (USE ONLY)

PERSONNEL _____ REFERENCE NO. 6 SHEET 9 OF 27
 NOTES HOMAN DATE 9/25/12 ROUTE SR 357
 H.C. HOMAN WEATHER PTLY CLOUDY COUNTY OTTAWA
 R.C. ROUSOS TEMP. 53° SOUTH BASS
 _____ ISLAND

DWG BY RHOADES PID 25525

TYPE MONUMENT P.K.NAIL

ON SURFACE - ~~BELOW~~ ON _____

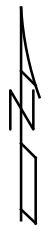
OFFSET \varnothing PAVEMENT 1.0' ~~RT~~ : RT

8.0' TO RT EDGE PAVEMENT

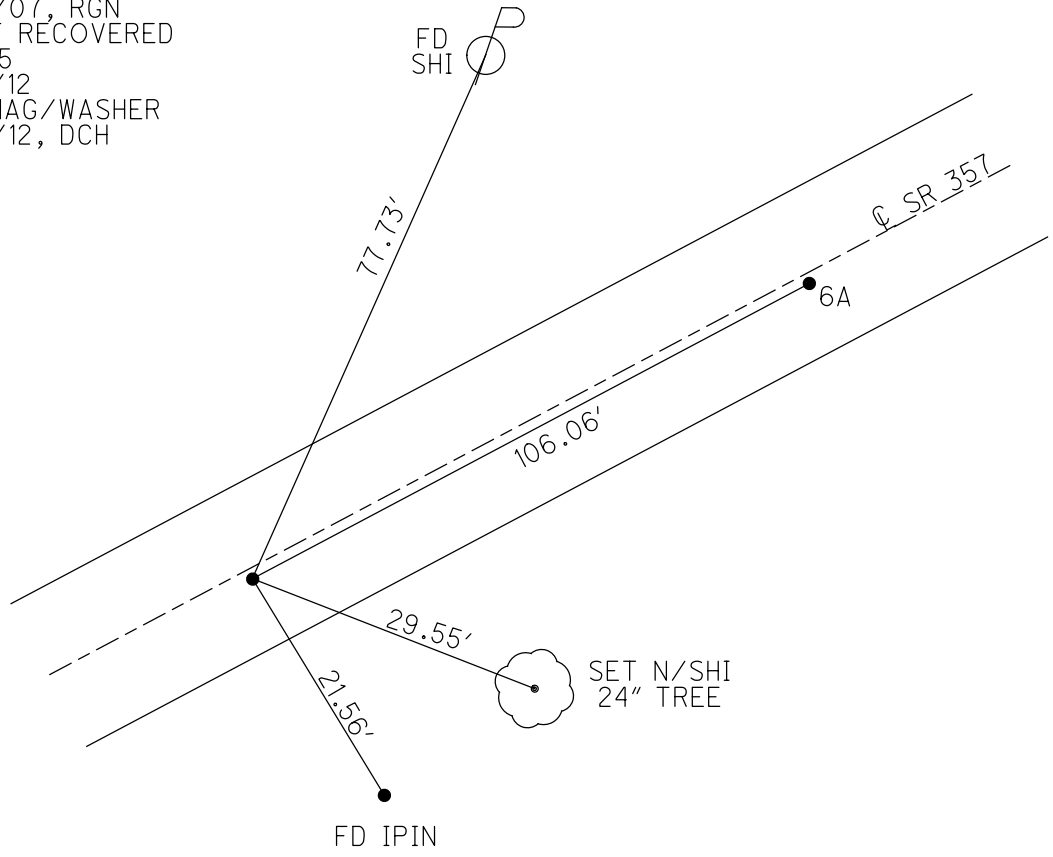
STATION: 87+27.68

HORIZ.DATUM: NAD 1983 GEOID: 2003

GRID: NORTHING: 725670.387 EASTING: 1885001.965



RECORD:
 FD P.K.NAIL
 RSV145
 9/20/07, RGN
 POINT RECOVERED
 RSV145
 9/25/12
 SET MAG/WASHER
 11/25/12, DCH



O.D.O.T. DISTRICT 2 SURVEY OFFICE (USE ONLY)

PERSONNEL

REFERENCE NO. 6 A

SHEET 10 OF 27

NOTES HOMAN

DATE 11/25/12

ROUTE SR 357

H.C. HOMAN

WEATHER PTLY CLOUDY

COUNTY OTTAWA

R.C. ROUSOS

TEMP. 53°

SOUTH BASS
ISLAND

DWG BY RHOADES PID 25525

TYPE MONUMENT P.K.NAIL

ON SURFACE - ~~BELOW~~ ON _____

OFFSET \varnothing PAVEMENT 1.6' \pm : RT

8.5' TO RT EDGE PAVEMENT

STATION: 88+33.96

HORZ.DATUM: NAD 1983

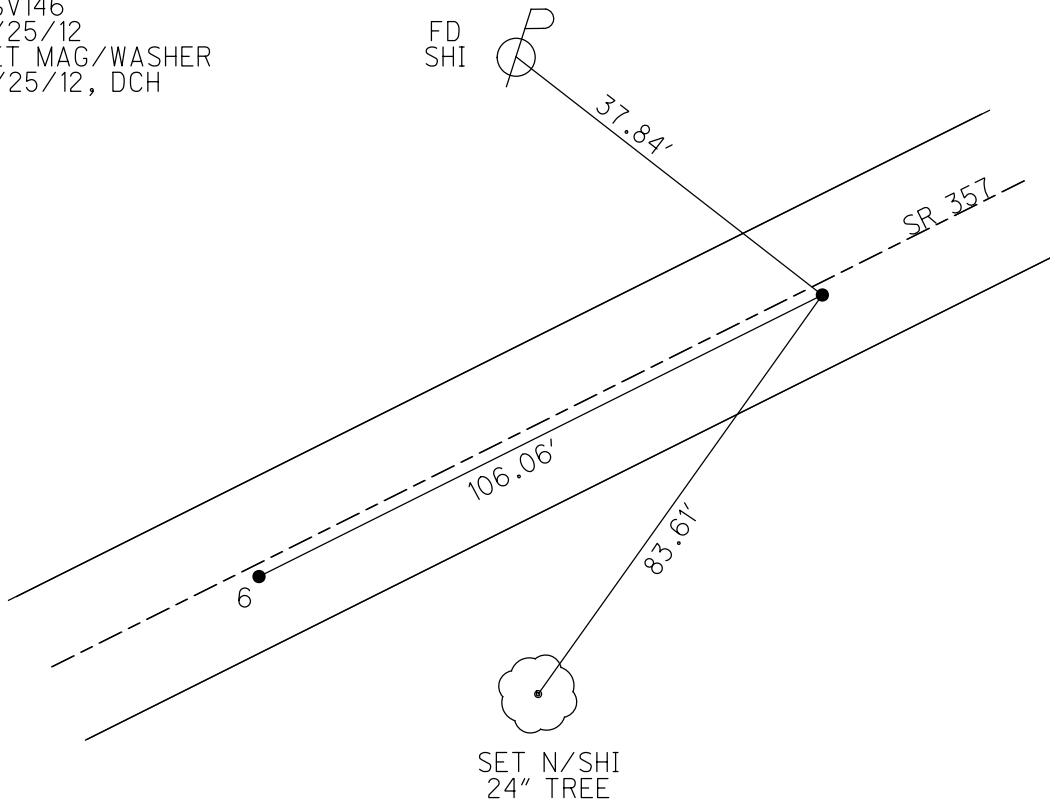
GEOID: 2003

GRID: NORTHING: 725714.756

EASTING: 1885098.264



RECORD: P.I.
FD P.K.NAIL
RSV146
9/20/07, RGN
POINT RECOVERED
RSV146
9/25/12
SET MAG/WASHER
11/25/12, DCH



O.D.O.T. DISTRICT 2 SURVEY OFFICE (USE ONLY)

PERSONNEL

REFERENCE NO. 7

SHEET 11 OF 27

NOTES HOMAN

DATE 9/25/12

ROUTE SR 357

H.C. HOMAN

WEATHER PTLY CLOUDY

COUNTY OTTAWA

R.C. ROUSOS

TEMP. 53°

SOUTH BASS
ISLAND

DWG BY RHOADES

PID 25525

TYPE MONUMENT LG.R.R.SPIKE

~~ON SURFACE~~ - BELOW 0.65'

OFFSET \odot PAVEMENT 9.0' \pm : RT

0.7' TO RT EDGE PAVEMENT

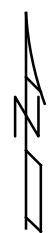
STATION: 90+56.13

HORZ.DATUM: NAD 1983

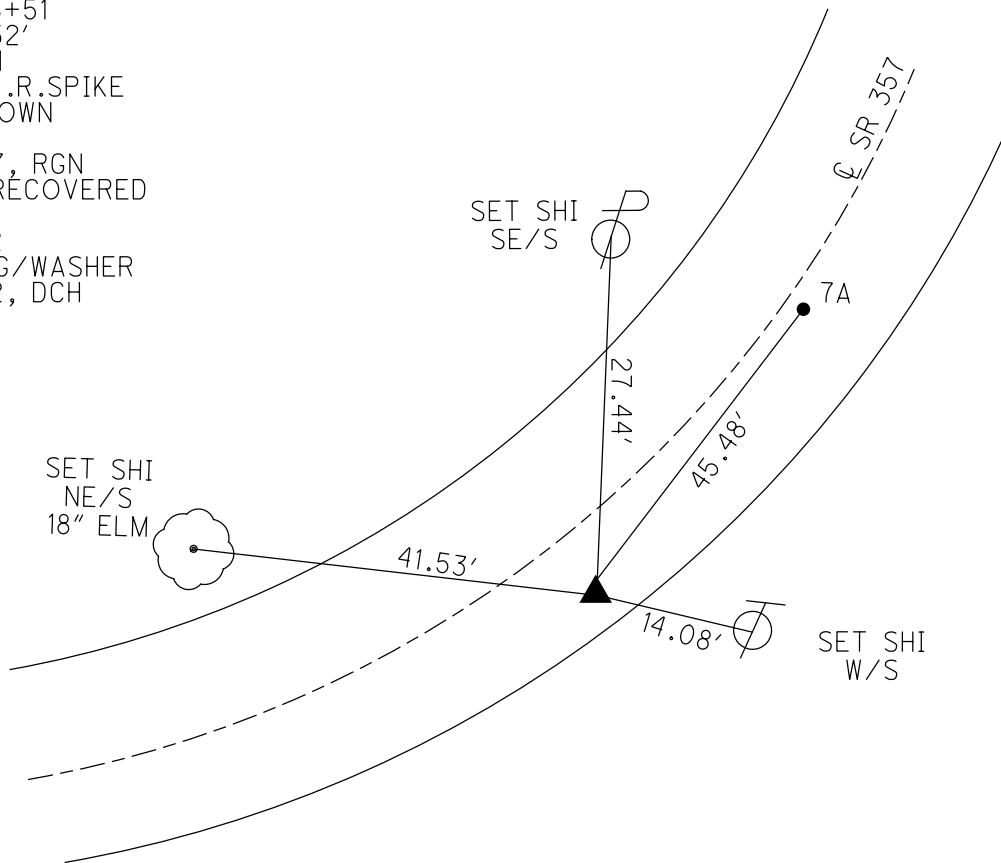
GEOID: 2003

GRID: NORTHING: 725767.631

EASTING: 1885213.168



RECORD: P.I.
 STA. 88+51
 $\Delta=23^{\circ} 32'$
 7/24/61
 FD LG.R.R.SPIKE
 0.65' DOWN
 RSV101
 9/18/07, RGN
 POINT RECOVERED
 RSV101
 9/25/12
 SET MAG/WASHER
 11/25/12, DCH



O.D.O.T. DISTRICT 2 SURVEY OFFICE (USE ONLY)

PERSONNEL _____ REFERENCE NO. 7 A SHEET 12 OF 27
 NOTES HOMAN DATE 11/25/12 ROUTE SR 357
 H.C. HOMAN WEATHER PTLY CLOUDY COUNTY OTTAWA
 R.C. ROUSOS TEMP. 53° SOUTH BASS ISLAND

DWG BY RHOADES PID 25525

TYPE MONUMENT MAG NAIL

~~ON SURFACE~~ - BELOW 0.65

OFFSET \odot PAVEMENT 2.0' ~~LT~~ : RT

7.7' TO RT EDGE PAVEMENT

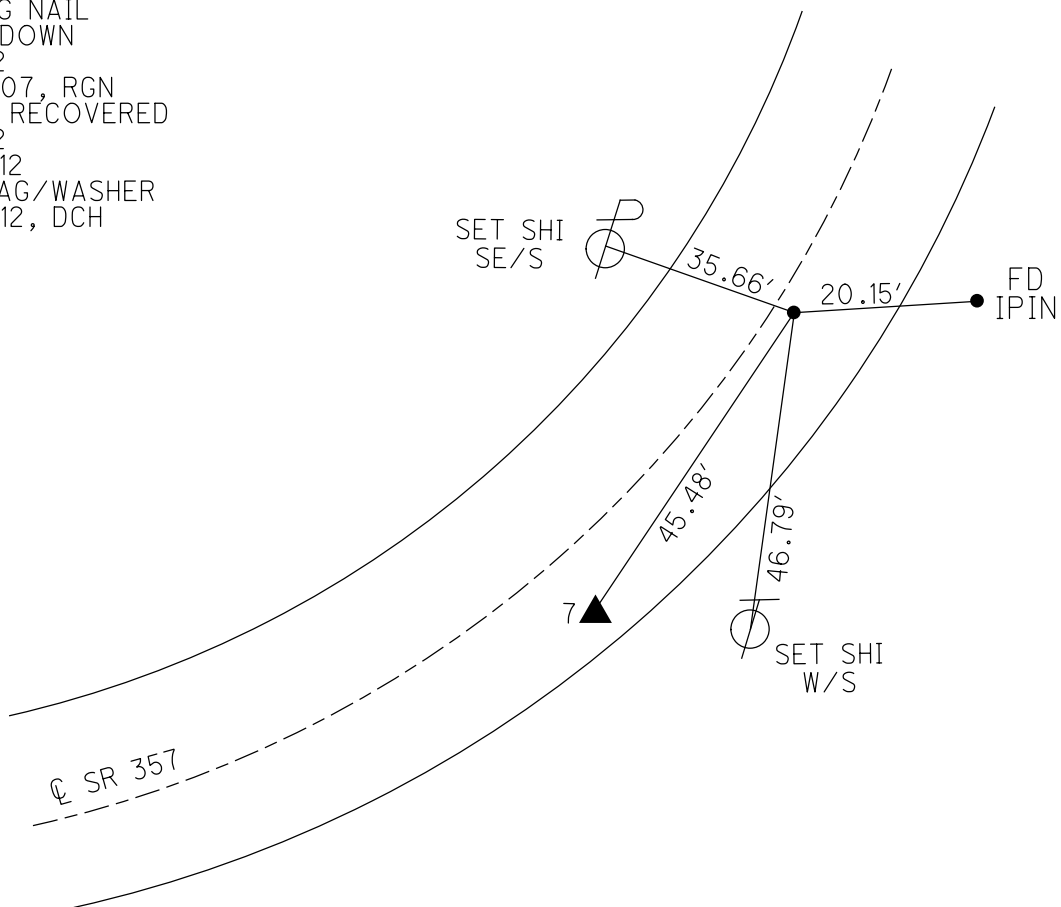
STATION: 91+01.61

HORIZ.DATUM: NAD 1983 GEOID: 2003

GRID: NORTHING: 725801.611 EASTING: 1885243.580



RECORD:
 FD MAG NAIL
 0.65' DOWN
 RSV102
 9/20/07, RGN
 POINT RECOVERED
 RSV102
 9/25/12
 SET MAG/WASHER
 11/25/12, DCH



O.D.O.T. DISTRICT 2 SURVEY OFFICE (USE ONLY)

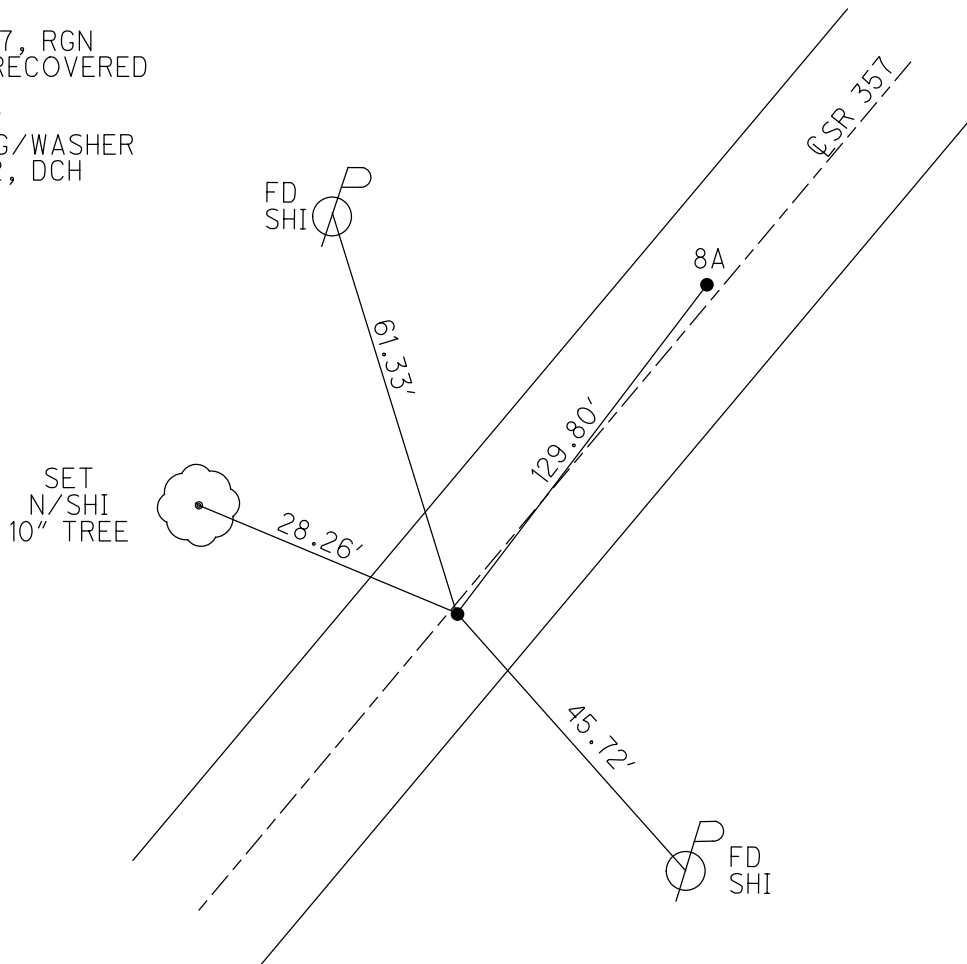
PERSONNEL _____ REFERENCE NO. 8 SHEET 13 OF 27
 NOTES HOMAN DATE 11/25/12 ROUTE SR 357
 H.C. HOMAN WEATHER PTLY CLOUDY COUNTY OTTAWA
 R.C. ROUSOS TEMP. 53° SOUTH BASS
 _____ ISLAND
 DWG BY RHOADES PID 25525

TYPE MONUMENT P.K.NAIL
 ON SURFACE - ~~BELOW~~ ON _____
 OFFSET \varnothing PAVEMENT 0.6' ~~LT~~ : RT
8.2' TO RT EDGE PAVEMENT
 STATION: 97+34.57

HORZ.DATUM: NAD 1983 GEOID: 2003
 GRID: NORTHING: 726346.852 EASTING: 1885731.1612



RECORD: P.I.
 FD P.K.NAIL
 RSV1374
 9/20/07, RGN
 POINT RECOVERED
 RSV1374
 9/25/12
 SET MAG/WASHER
 11/25/12, DCH



O.D.O.T. DISTRICT 2 SURVEY OFFICE (USE ONLY)

PERSONNEL _____ REFERENCE NO. 8 A SHEET 14 OF 27
NOTES HOMAN DATE 11/25/12 ROUTE SR 357
H.C. HOMAN WEATHER PTLY CLOUDY COUNTY OTTAWA
R.C. ROUSOS TEMP. 53° SOUTH BASS
ISLAND

DWG BY RHOADES PID 25525

TYPE MONUMENT MAG NAIL

ON SURFACE - ~~BELOW~~ ON _____

OFFSET \varnothing PAVEMENT 0.7' LT : ~~RT~~

9.3' TO RT EDGE PAVEMENT

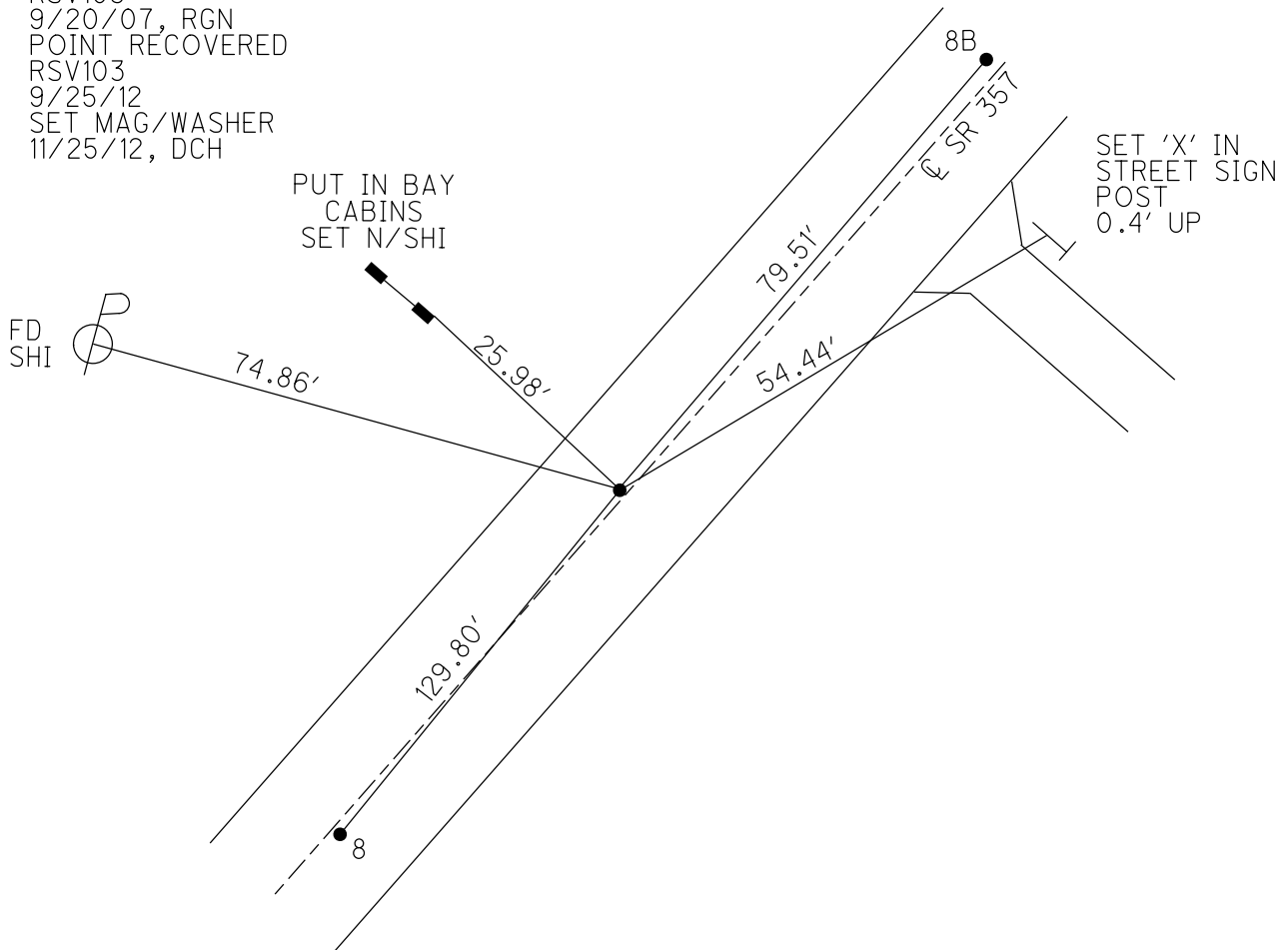
STATION: 98+64.37

HORZ.DATUM: NAD 1983 GEOID: 2003

GRID: NORTHING: 726443.813 EASTING: 1885817.572



RECORD:
FD MAG NAIL
RSV103
9/20/07, RGN
POINT RECOVERED
RSV103
9/25/12
SET MAG/WASHER
11/25/12, DCH



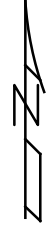
O.D.O.T. DISTRICT 2 SURVEY OFFICE (USE ONLY)

PERSONNEL _____ REFERENCE NO. 8 B SHEET 15 OF 27
 NOTES HOMAN DATE 11/25/12 ROUTE SR 357
 H.C. HOMAN WEATHER PTLY CLOUDY COUNTY OTTAWA
 R.C. ROUSOS TEMP. 53° SOUTH BASS ISLAND

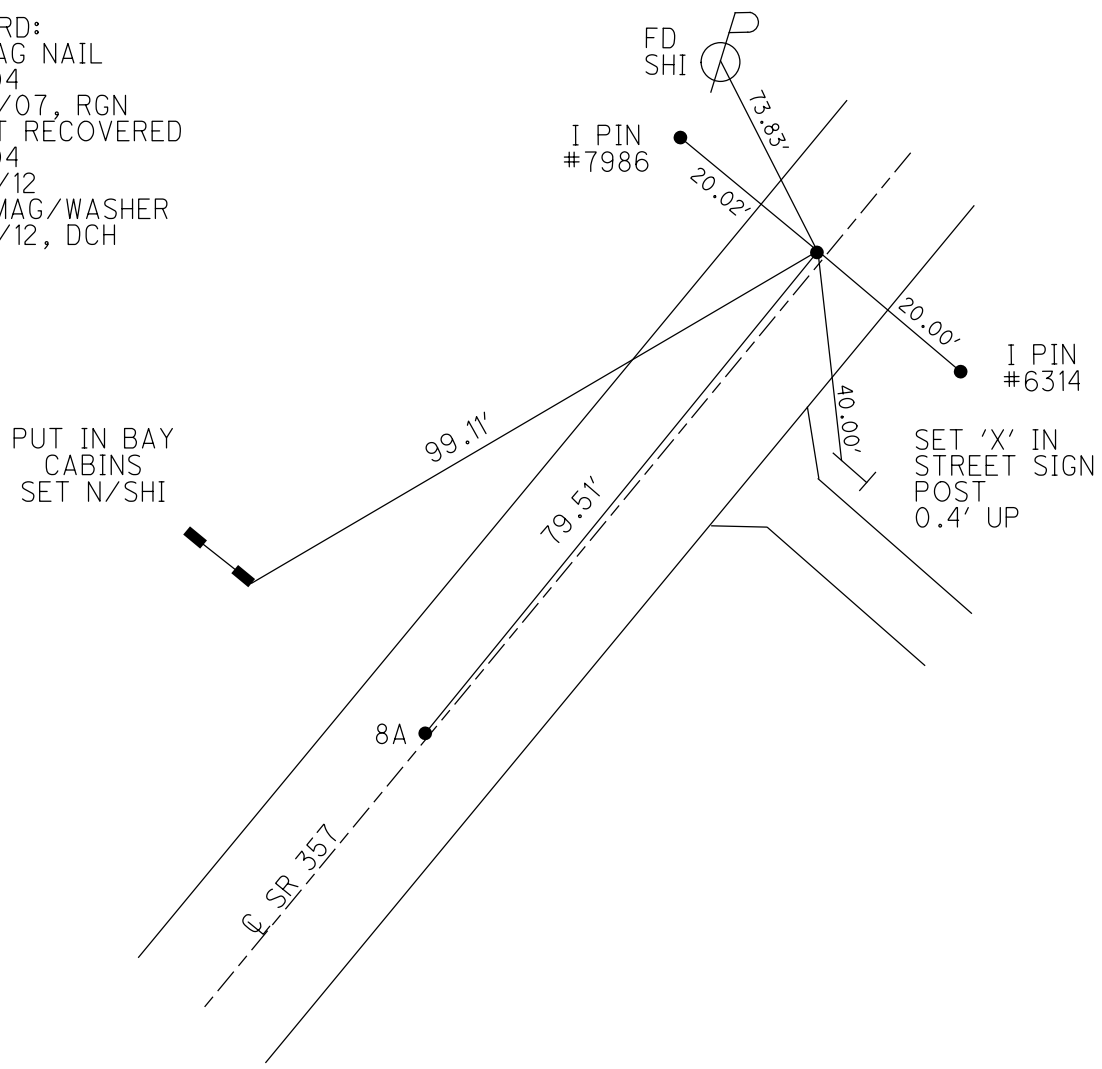
DWG BY RHOADES PID 25525

TYPE MONUMENT MAG NAIL
 ON SURFACE - ~~BELOW~~ ON
 OFFSET CL PAVEMENT 1.2' LT : ~~RT~~
9.5' TO RT EDGE PAVEMENT
 STATION: 99+43.88

HORZ. DATUM: NAD 1983 GEOID: 2003
 GRID: NORTHING: 726503.063 EASTING: 1885870.598



RECORD:
 FD MAG NAIL
 RSV104
 9/20/07, RGN
 POINT RECOVERED
 RSV104
 9/25/12
 SET MAG/WASHER
 11/25/12, DCH



O.D.O.T. DISTRICT 2 SURVEY OFFICE (USE ONLY)

PERSONNEL _____ REFERENCE NO. 9 SHEET 16 OF 27
 NOTES HOMAN DATE 11/25/12 ROUTE SR 357
 H.C. HOMAN WEATHER PTLY CLOUDY COUNTY OTTAWA
 R.C. ROUSOS TEMP. 53° SOUTH BASS ISLAND

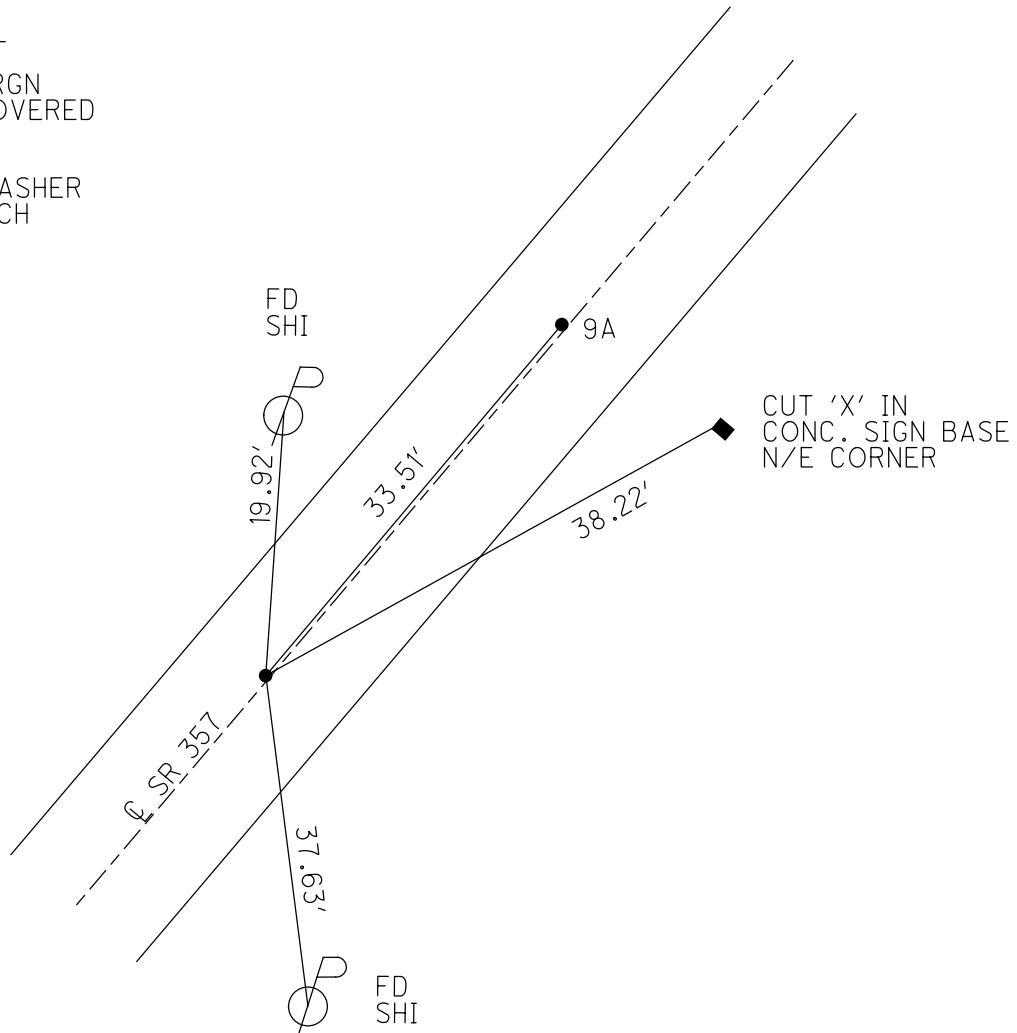
DWG BY RHOADES PID 25525

TYPE MONUMENT P.K.NAIL
 ON SURFACE - ~~BELOW~~ ON _____
 OFFSET \varnothing PAVEMENT ON LT : RT
8.4' TO RT EDGE PAVEMENT
 STATION: 106+14.12

HORIZ.DATUM: NAD 1983 GEOID: 2003
727002.681 1886317.247
 GRID: NORTHING: _____ EASTING: _____



RECORD:
 FD P.K.NAIL
 RSV105
 9/20/07, RGN
 POINT RECOVERED
 RSV105
 9/25/12
 SET MAG/WASHER
 11/25/12, DCH



O.D.O.T. DISTRICT 2 SURVEY OFFICE (USE ONLY)

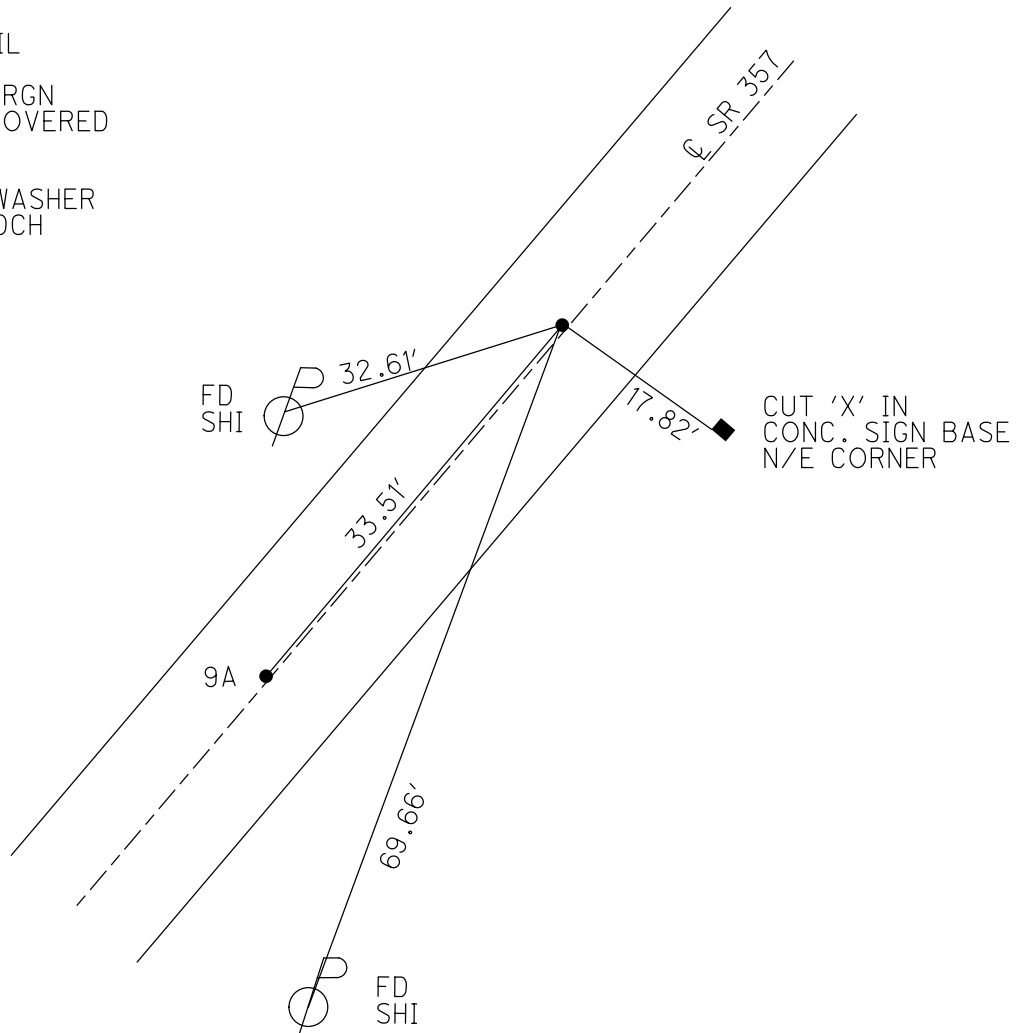
PERSONNEL _____ REFERENCE NO. 9 A SHEET 17 OF 27
 NOTES HOMAN DATE 11/25/12 ROUTE SR 357
 H.C. HOMAN WEATHER PTLY CLOUDY COUNTY OTTAWA
 R.C. ROUSOS TEMP. 53° SOUTH BASS
 _____ ISLAND
 DWG BY RHOADES PID 25525

TYPE MONUMENT P.K.NAIL
~~ON SURFACE~~ - BELOW 0.1'
 OFFSET C PAVEMENT 0.4' LT : ~~RT~~
8.4' TO RT EDGE PAVEMENT
 STATION: 106+47.58

HORZ.DATUM: NAD 1983 GEOID: 2003
 GRID: NORTHING: 727027.769 EASTING: 1886339.383



RECORD:
 FD P.K.NAIL
 RSV106
 9/20/07, RGN
 POINT RECOVERED
 RSV106
 9/25/12
 SET MAG/WASHER
 11/25/12, DCH

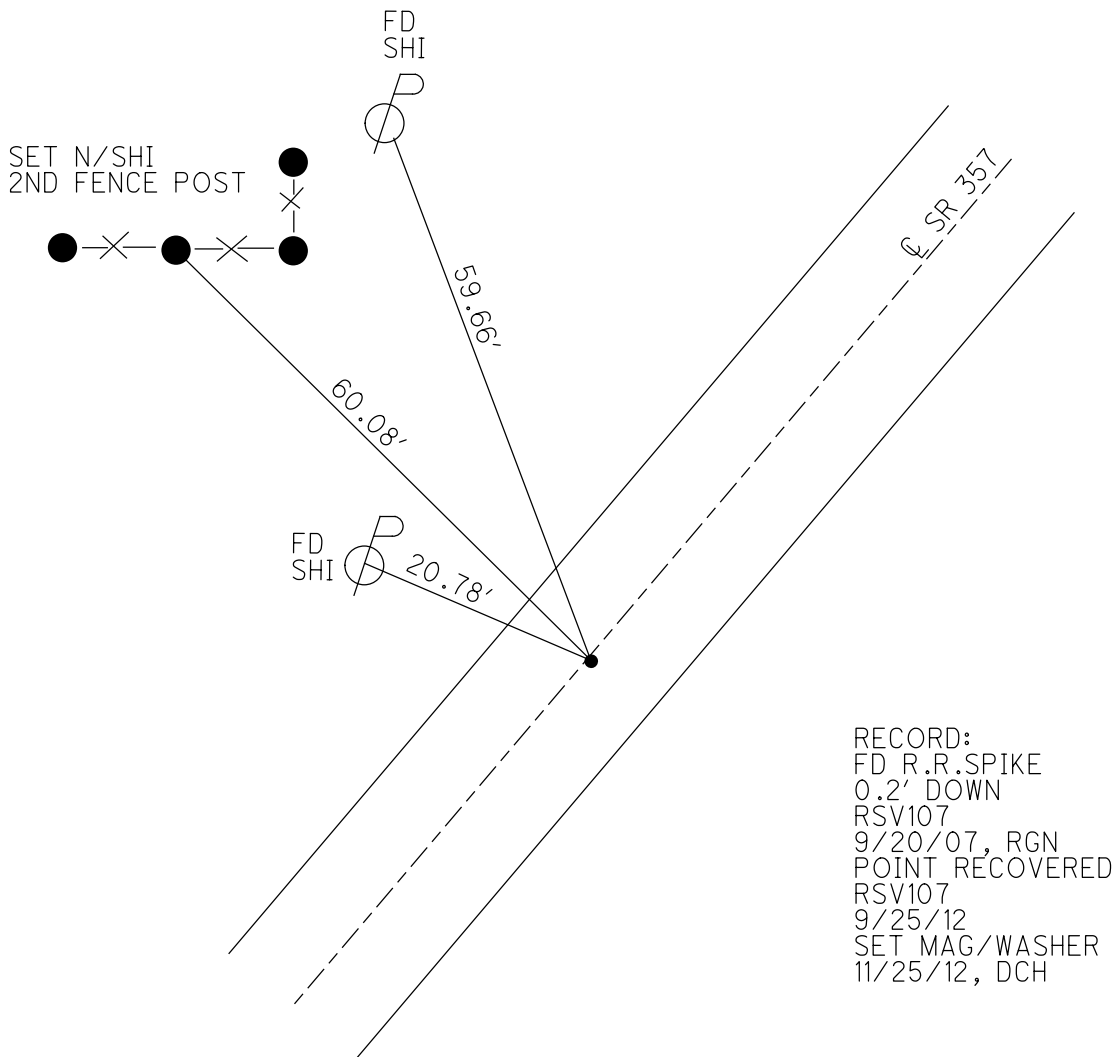
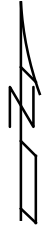


O.D.O.T. DISTRICT 2 SURVEY OFFICE (USE ONLY)

PERSONNEL _____ REFERENCE NO. 10 SHEET 18 OF 27
 NOTES HOMAN DATE 11/25/12 ROUTE SR 357
 H.C. HOMAN WEATHER PTLY CLOUDY COUNTY OTTAWA
 R.C. ROUSOS TEMP. 53° SOUTH BASS
 _____ ISLAND
 DWG BY RHOADES PID 25525

TYPE MONUMENT R.R.SPIKE
~~ON SURFACE~~ - BELOW 0.2'
 OFFSET C PAVEMENT 0.5' L : RT
6.8' TO RT EDGE PAVEMENT
 STATION: 108+95.04

HORIZ.DATUM: NAD 1983 GEOID: 2003
 GRID: NORTHING: 727212.094 EASTING: 1886504.495



O.D.O.T. DISTRICT 2 SURVEY OFFICE (USE ONLY)

PERSONNEL _____ REFERENCE NO. 11 SHEET 19 OF 27
 NOTES HOMAN DATE 11/25/12 ROUTE SR 357
 H.C. HOMAN WEATHER PTLY CLOUDY COUNTY OTTAWA
 R.C. ROUSOS TEMP. 53° SOUTH BASS
 _____ ISLAND
 DWG BY RHOADES PID 25525

TYPE MONUMENT P.K.NAIL/SHI

~~ON SURFACE~~ - BELOW 0.15'

OFFSET Q PAVEMENT 0.3' ~~LT~~ : RT

8.2' TO RT EDGE PAVEMENT

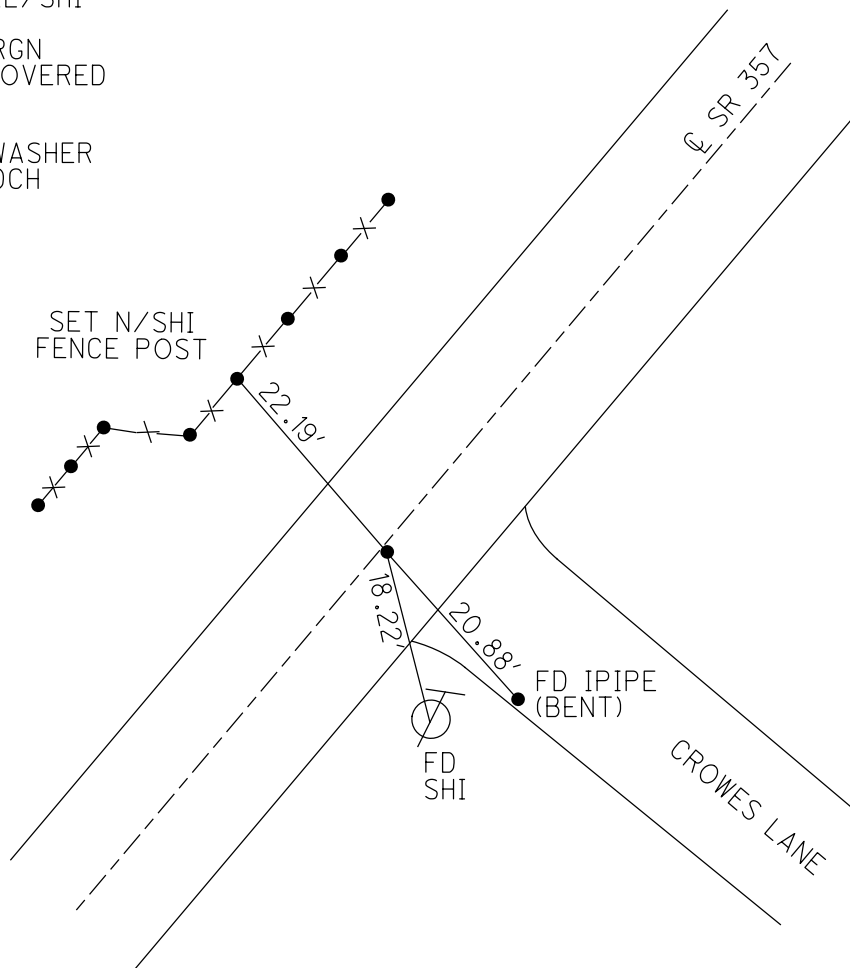
STATION: 111+40.12

HORIZ.DATUM: NAD 1983 GEOID: 2003

GRID: NORTHING: 727395.439 EASTING: 1886666.955



RECORD:
 FD P.K.NAIL/SHI
 RSV1373
 9/21/07, RGN
 POINT RECOVERED
 RSV1373
 9/25/12
 SET MAG/WASHER
 11/25/12, DCH



O.D.O.T. DISTRICT 2 SURVEY OFFICE (USE ONLY)

PERSONNEL _____ REFERENCE NO. 12 SHEET 20 OF 27
 NOTES HOMAN DATE 11/25/12 ROUTE SR 357
 H.C. HOMAN WEATHER PTLY CLOUDY COUNTY OTTAWA
 R.C. ROUSOS TEMP. 53° SOUTH BASS ISLAND
 DWG BY RHOADES PID 25525

TYPE MONUMENT R.R.SPIKE

~~ON SURFACE~~ - BELOW 0.1'

OFFSET \odot PAVEMENT 0.6' \pm : RT

6.9' TO RT EDGE PAVEMENT

STATION: 116+13.53

HORZ.DATUM: NAD 1983

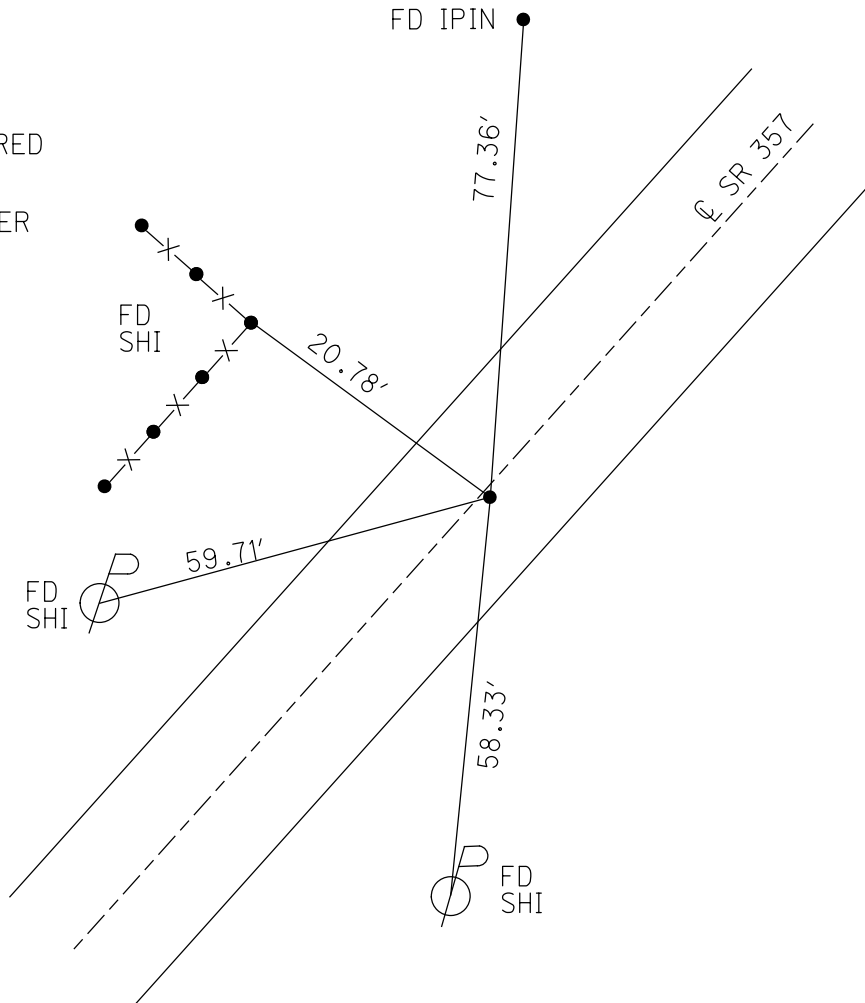
GEOID: 2003

GRID: NORTHING: 727747.939

EASTING: 1886983.134



RECORD:
 FD R.R.SPIKE
 0.1' DOWN
 RSV108
 9/21/07, RGN
 POINT RECOVERED
 RSV108
 9/25/12
 SET MAG/WASHER
 11/25/12, DCH



O.D.O.T. DISTRICT 2 SURVEY OFFICE (USE ONLY)

PERSONNEL _____

REFERENCE NO. 13

SHEET 21 OF 27

NOTES HOMAN

DATE 11/25/12

ROUTE SR 357

H.C. HOMAN

WEATHER PTLY CLOUDY

COUNTY OTTAWA

R.C. ROUSOS

TEMP. 53°

SOUTH BASS
ISLAND

DWG BY RHOADES PID 25525

TYPE MONUMENT P.K.NAIL

~~ON SURFACE~~ - BELOW 0.15'

OFFSET C PAVEMENT 0.3' ~~LT~~ : RT

7.4' TO RT EDGE PAVEMENT

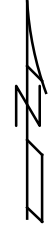
STATION: 118+27.24

HORZ.DATUM: NAD 1983

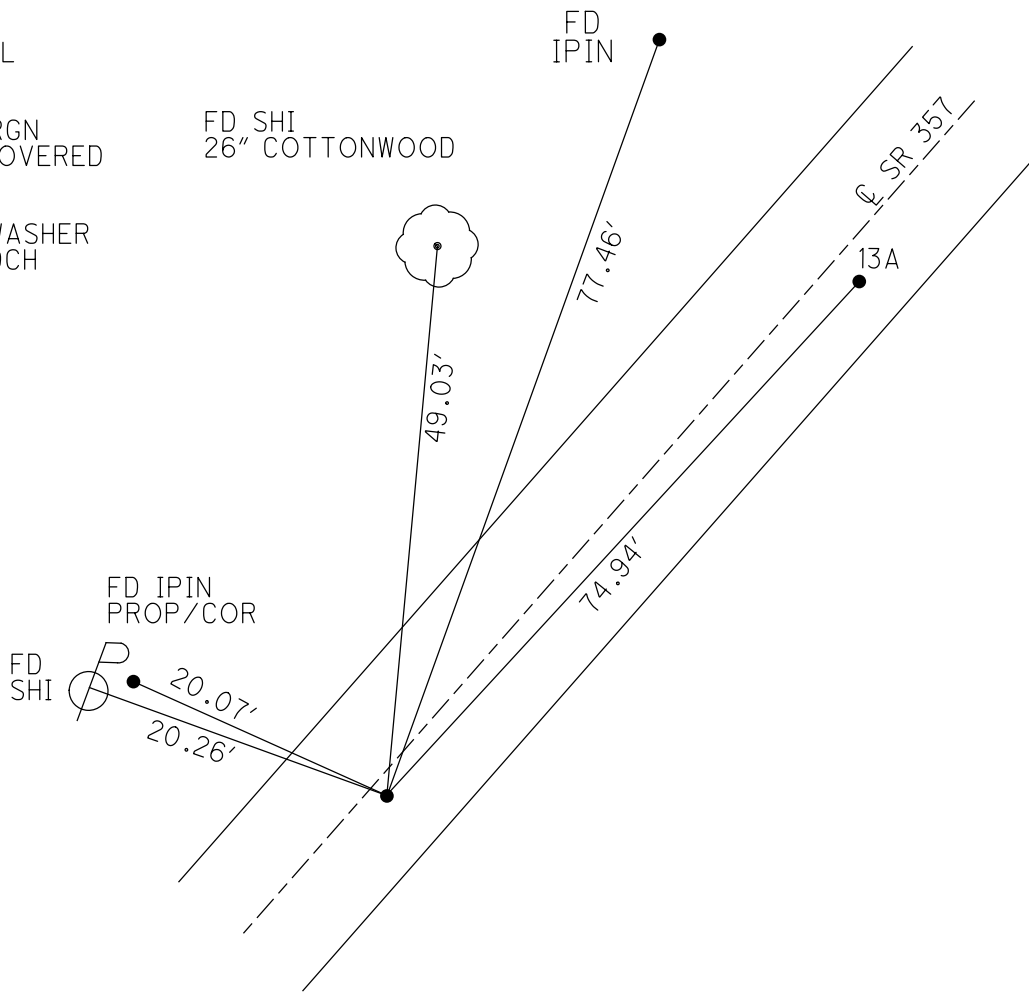
GEOID: 2003

GRID: NORTHING: 727907.410

EASTING: 1887125.906



RECORD:
FD P.K.NAIL
0.15' DOWN
RSV109
9/21/07, RGN
POINT RECOVERED
RSV109
9/25/12
SET MAG/WASHER
11/25/12, DCH



O.D.O.T. DISTRICT 2 SURVEY OFFICE (USE ONLY)

PERSONNEL

REFERENCE NO. 13 A

SHEET 22 OF 27

NOTES HOMAN

DATE 11/25/12

ROUTE SR 357

H.C. HOMAN

WEATHER PTLY CLOUDY

COUNTY OTTAWA

R.C. ROUSOS

TEMP. 53°

SOUTH BASS
ISLAND

DWG BY RHOADES PID 25525

TYPE MONUMENT MAG NAIL

ON SURFACE - ~~BELOW~~ ON

OFFSET ☉ PAVEMENT 0.8' ~~RT~~ : RT

7.1' TO RT EDGE PAVEMENT

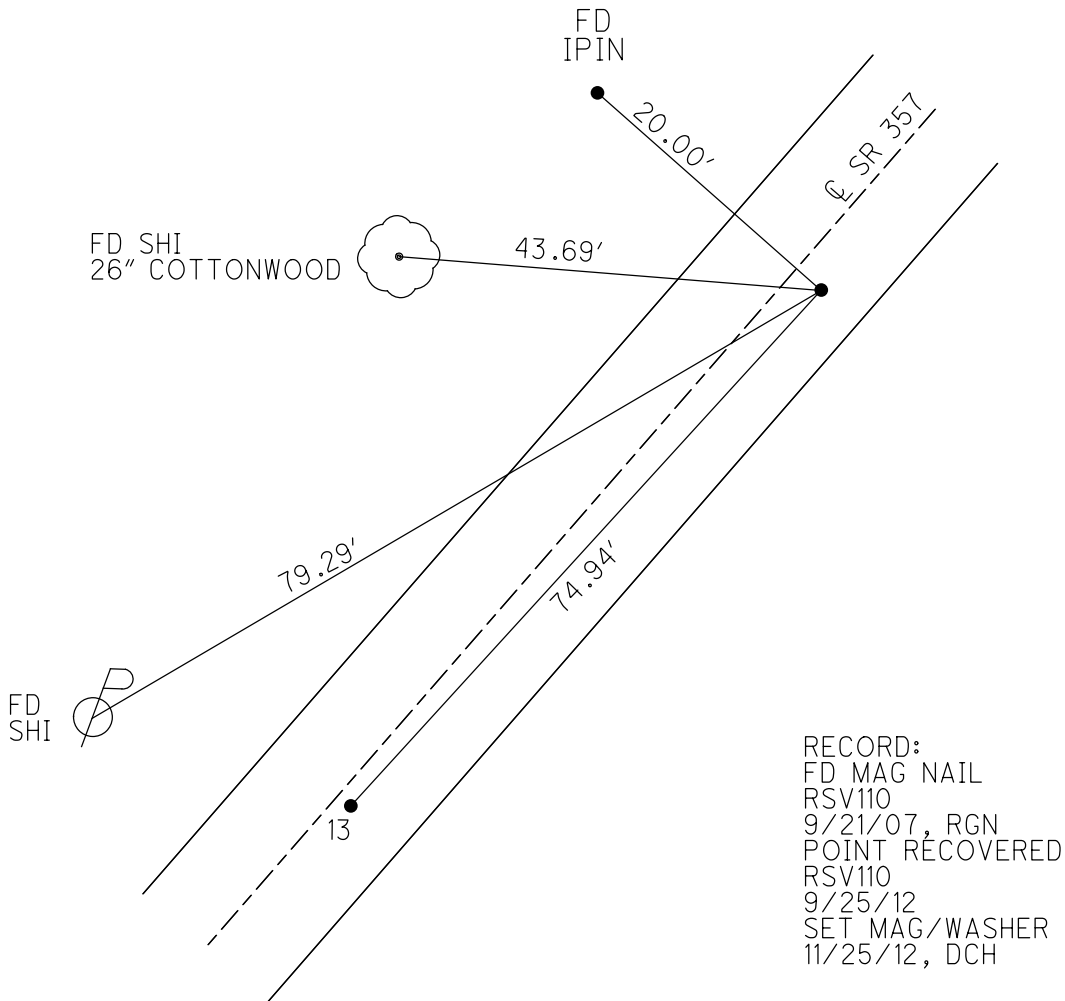
STATION: 119+04.30

HORZ.DATUM: NAD 1983

GEOID: 2003

GRID: NORTHING: 727963.225

EASTING: 1887175.856

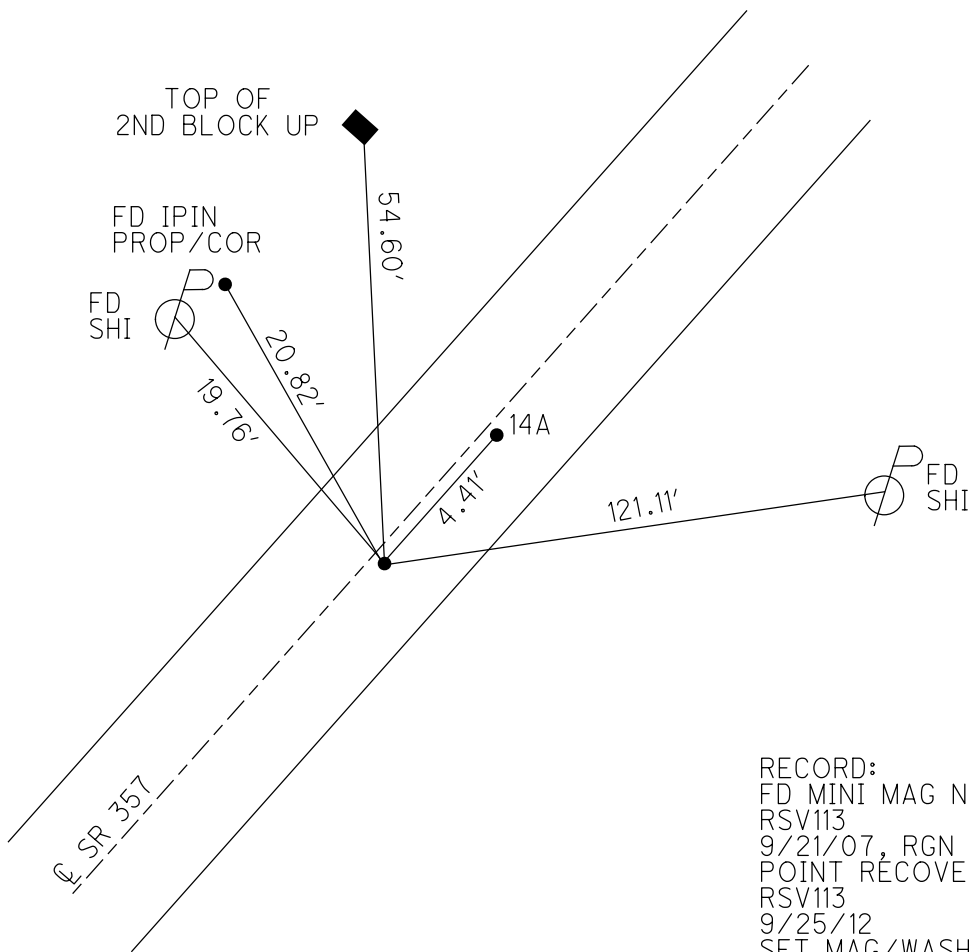


O.D.O.T. DISTRICT 2 SURVEY OFFICE (USE ONLY)

PERSONNEL _____ REFERENCE NO. 14 SHEET 23 OF 27
 NOTES HOMAN DATE 11/25/12 ROUTE SR 357
 H.C. HOMAN WEATHER PTLY CLOUDY COUNTY OTTAWA
 R.C. ROUSOS TEMP. 53° SOUTH BASS
 _____ ISLAND
 DWG BY RHOADES PID 25525

TYPE MONUMENT MINI MAG NAIL
 ON SURFACE - ~~BELOW~~ ON
 OFFSET 0.9' RT : RT
7.0' TO RT EDGE PAVEMENT
 STATION: 119+68.85

HORZ.DATUM: NAD 1983 GEOID: 2003
 GRID: NORTHING: 726015.865 EASTING: 1887222.893

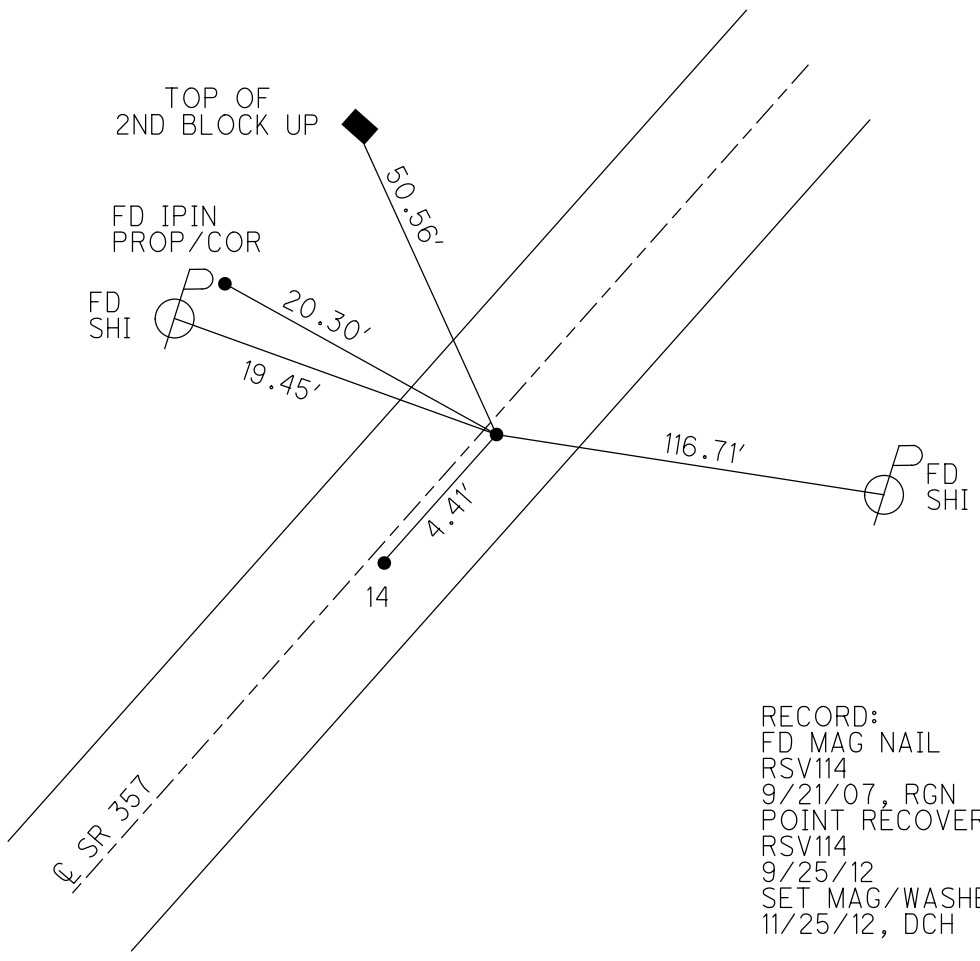
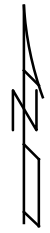


RECORD:
 FD MINI MAG NAIL
 RSV113
 9/21/07, RGN
 POINT RECOVERED
 RSV113
 9/25/12
 SET MAG/WASHER
 11/25/12, DCH

O.D.O.T. DISTRICT 2 SURVEY OFFICE (USE ONLY)

PERSONNEL _____ REFERENCE NO. 14 A SHEET 24 OF 27
NOTES HOMAN DATE 11/25/12 ROUTE SR 357
H.C. HOMAN WEATHER PTLY CLOUDY COUNTY OTTAWA
R.C. ROUSOS TEMP. 53° SOUTH BASS
ISLAND
DWG BY RHOADES PID 25525

TYPE MONUMENT MAG NAIL
ON SURFACE - ~~BELOW~~ ON _____
OFFSET 0.9' RT : RT
7.0' TO RT EDGE PAVEMENT
STATION: 119+73.26
HORZ.DATUM: NAD 1983 GEOID: 2003
GRID: NORTHING: 728019.126 EASTING: 1887225.857



RECORD:
FD MAG NAIL
RSV114
9/21/07, RGN
POINT RECOVERED
RSV114
9/25/12
SET MAG/WASHER
11/25/12, DCH

O.D.O.T. DISTRICT 2 SURVEY OFFICE (USE ONLY)

PERSONNEL _____ REFERENCE NO. 15 SHEET 25 OF 27
 NOTES HOMAN DATE 11/25/12 ROUTE SR 357
 H.C. HOMAN WEATHER PTLY CLOUDY COUNTY OTTAWA
 R.C. ROUSOS TEMP. 53° SOUTH BASS
 _____ ISLAND

DWG BY RHOADES PID 25525

TYPE MONUMENT R.R.SPIKE

ON SURFACE - ~~BELOW~~ ON _____

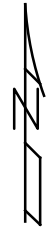
OFFSET \odot PAVEMENT 0.5' ~~LT~~ : RT

7.0' TO RT EDGE PAVEMENT

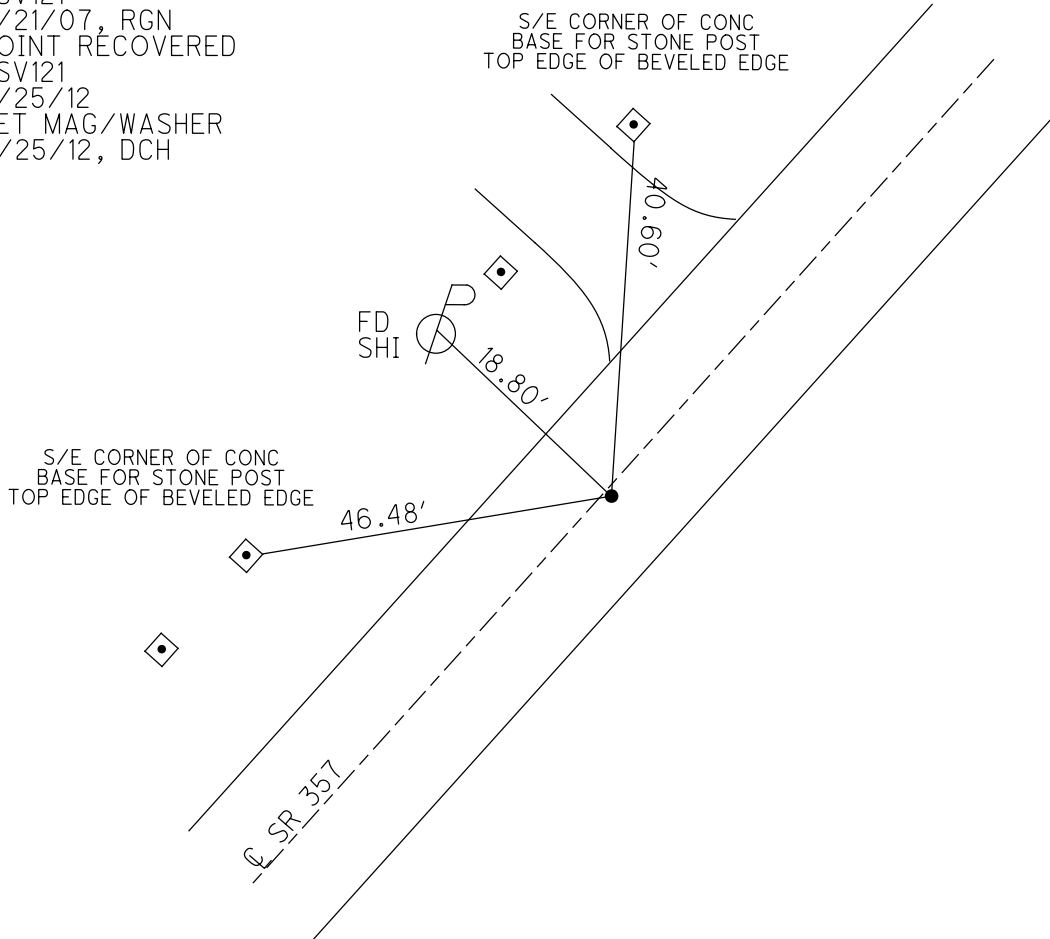
STATION: 122+45.37

HORZ.DATUM: NAD 1983 GEOID: 2003

GRID: NORTHING: 728218.928 EASTING: 1887404.110



RECORD:
 FD R.R.SPIKE
 RSV121
 9/21/07, RGN
 POINT RECOVERED
 RSV121
 9/25/12
 SET MAG/WASHER
 11/25/12, DCH



O.D.O.T. DISTRICT 2 SURVEY OFFICE (USE ONLY)

PERSONNEL

REFERENCE NO. 16

SHEET 26 OF 27

NOTES HOMAN

DATE 11/25/12

ROUTE SR 357

H.C. HOMAN

WEATHER PTLY CLOUDY

COUNTY OTTAWA

R.C. ROUSOS

TEMP. 53°

SOUTH BASS
ISLAND

DWG BY RHOADES PID 25525

TYPE MONUMENT R.R.SPIKE

ON SURFACE - ~~BELOW~~ ON

OFFSET \varnothing PAVEMENT 0.4' LT : ~~RT~~

15' TO RT EDGE PAVEMENT

STATION: 123+73.68

HORZ.DATUM: NAD 1983

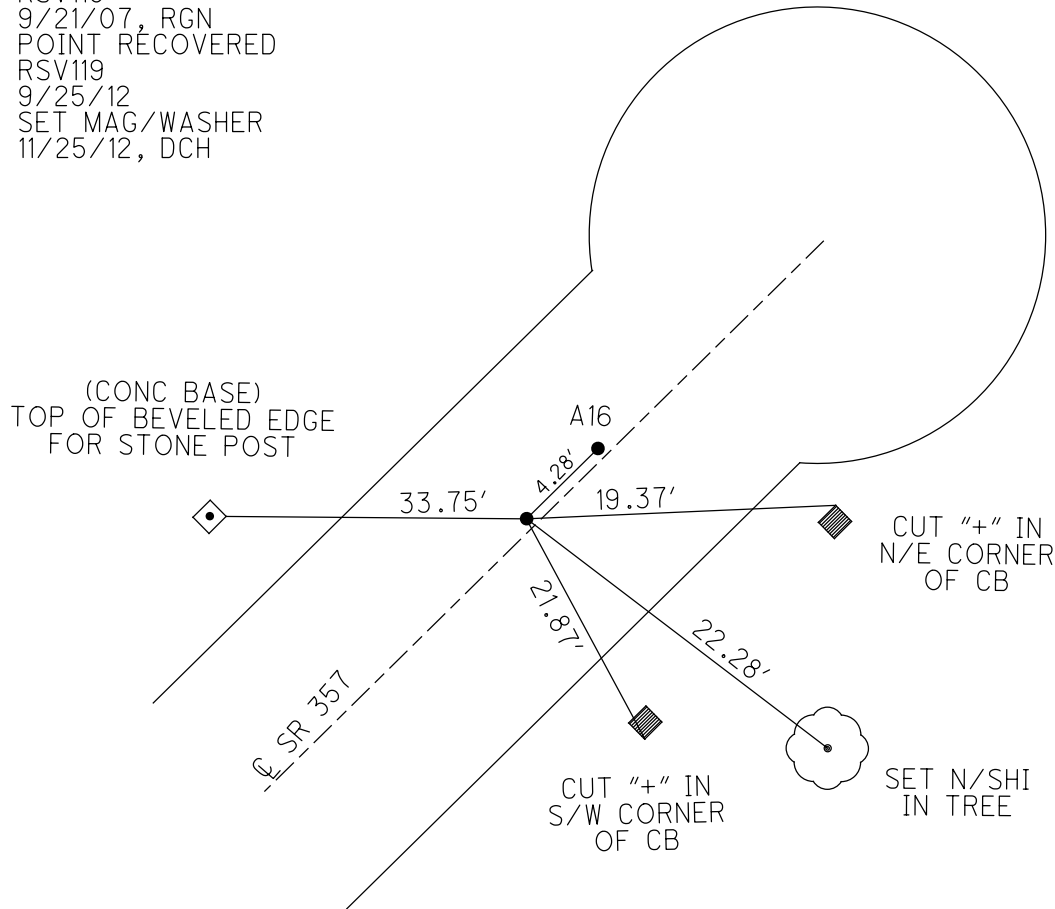
GEOID: 2003

GRID: NORTHING: 728314.560

EASTING: 1887489.866



RECORD:
FD R.R.SPIKE
RSV119
9/21/07, RGN
POINT RECOVERED
RSV119
9/25/12
SET MAG/WASHER
11/25/12, DCH



O.D.O.T. DISTRICT 2 SURVEY OFFICE (USE ONLY)

PERSONNEL

REFERENCE NO. 16 A

SHEET 27 OF 27

NOTES HOMAN

DATE 11/25/12

ROUTE SR 357

H.C. HOMAN

WEATHER PTLY CLOUDY

COUNTY OTTAWA

R.C. ROUSOS

TEMP. 53°

SOUTH BASS

ISLAND

DWG BY RHOADES

PID 25525

TYPE MONUMENT R.R.SPIKE

~~ON SURFACE~~ - BELOW 0.3'

OFFSET C PAVEMENT 0.4' LT : ~~RT~~

13.7' TO RT EDGE PAVEMENT

STATION: 123+77.96

HORZ.DATUM: NAD 1983

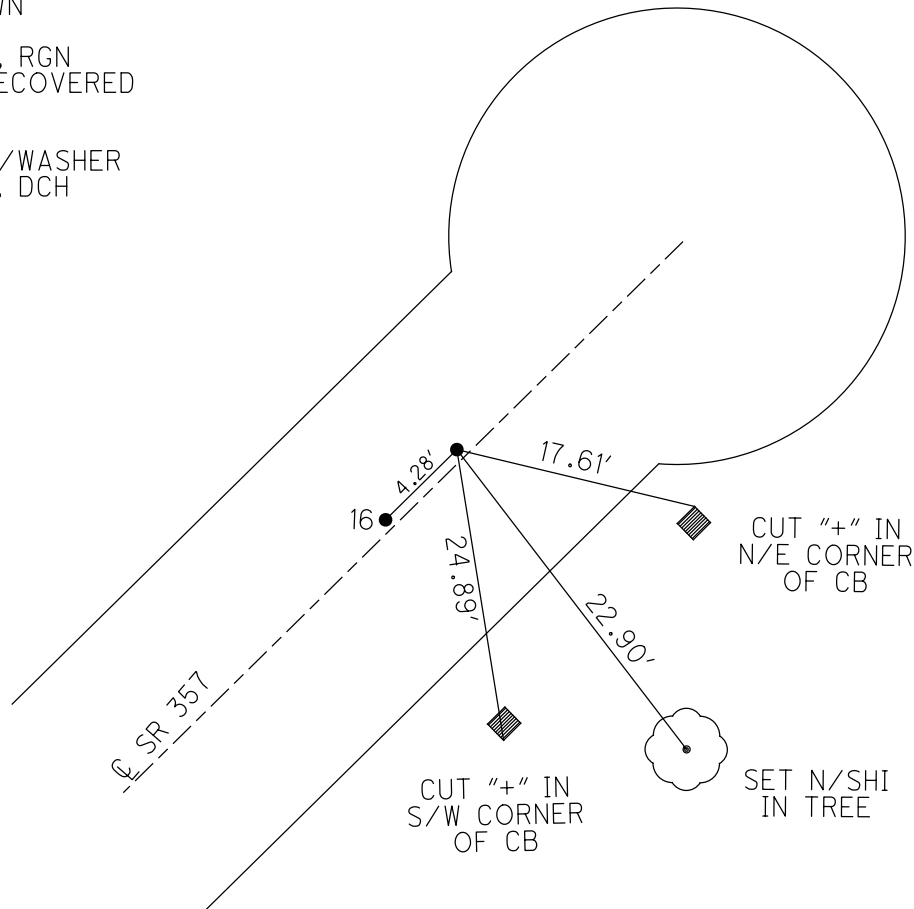
GEOID: 2003

GRID: NORTHING: 728317.753

EASTING: 1887492.690



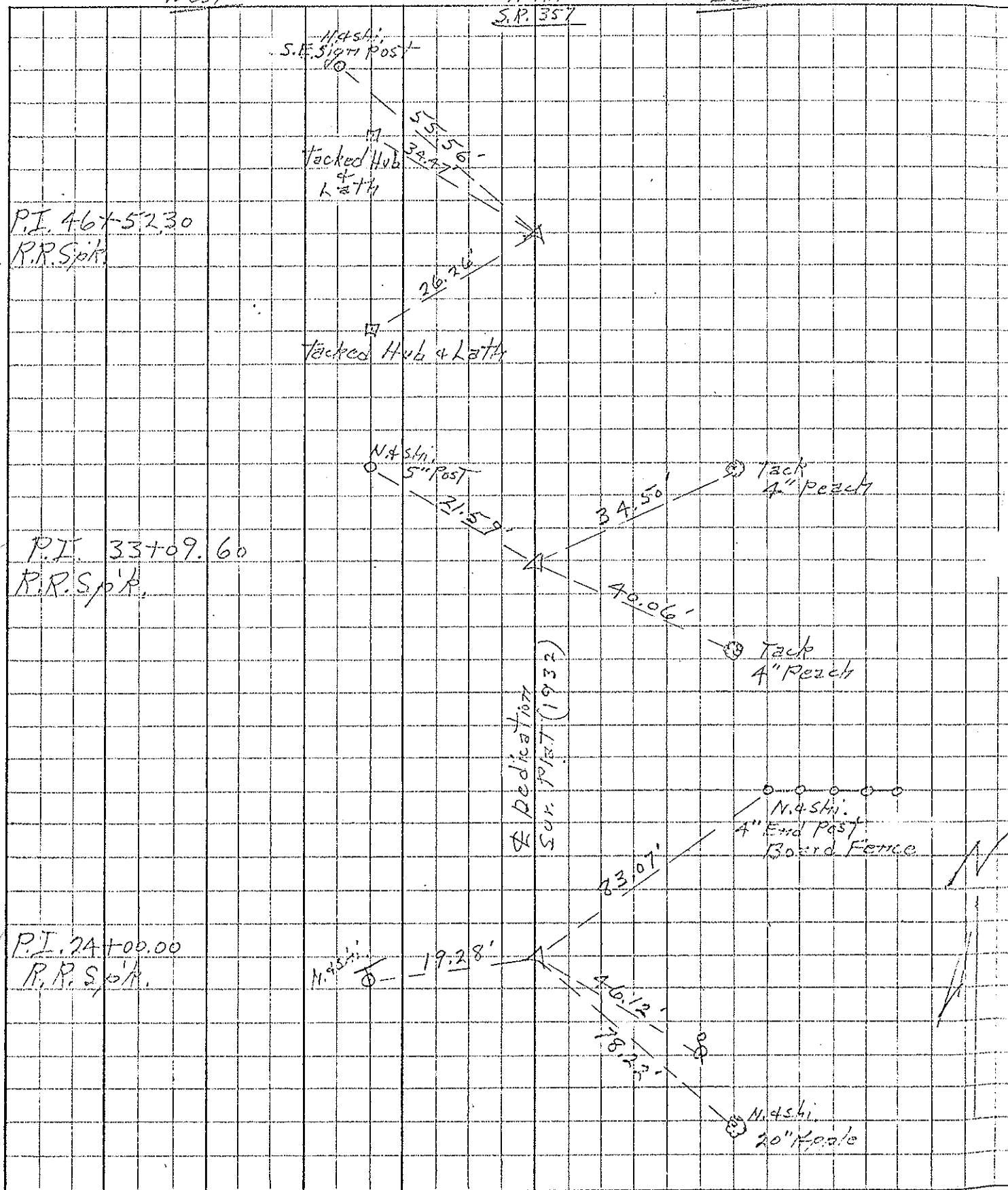
RECORD:
FD R.R.SPIKE
0.3' DOWN
RSV120
9/21/07, RGN
POINT RECOVERED
RSV120
9/25/12
SET MAG/WASHER
11/25/12, DCH



PERSONNEL TITLE PERSONNEL TITLE
 2 H-105 H. S. H. & Crossin
 Ripple
 Coeyman
 Henderson (Sick Leave)

COUNTY Ottawa DATE June 22, '67
 Exist. S.R. 2 North
 S. R. 357 to S.R. 534/63 WEATHER Clear
 SEC. Off. 53-11.60 TEMP. 75°

DESCRIPTION Ties - Control Points S.R. 357 JOB NO. 02735
 West-Left CENTER LINE North RIGHT East



PERSONNEL TITLE PERSONNEL TITLE

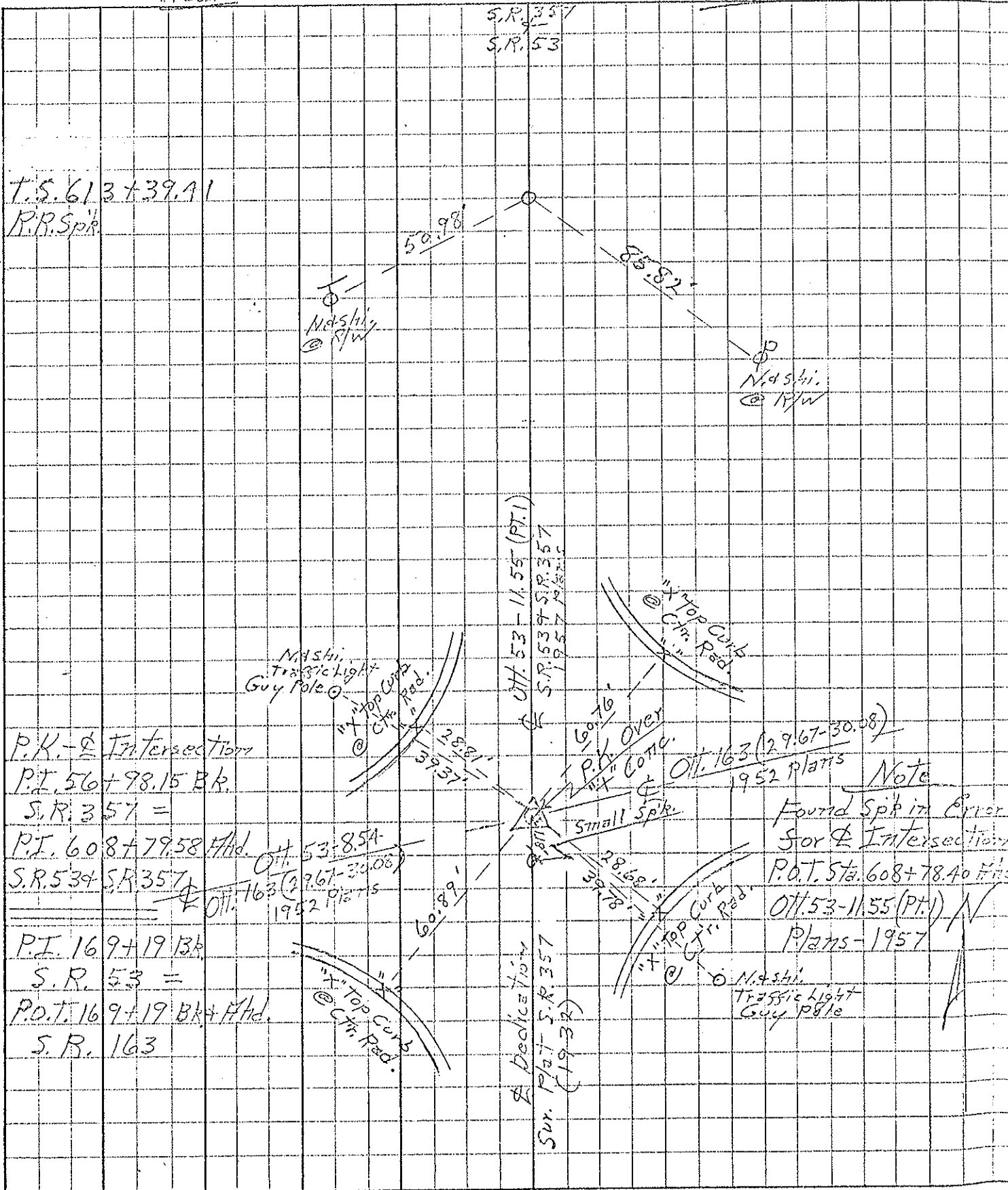
COUNTY Off. 2nd DATE June 22, '67
Exist. S.R. 2 North

S. R. 357 To S.R. 534163 WEATHER Clear

SEC. Off. 53-11.60 TEMP. 80°

DESCRIPTION Ties - Control Points S.R. 357 JOB NO. 02735

Wes. LEFT CENTER LINE - North RIGHT EAST



T.S. 613 + 39.91
R.R. Spk

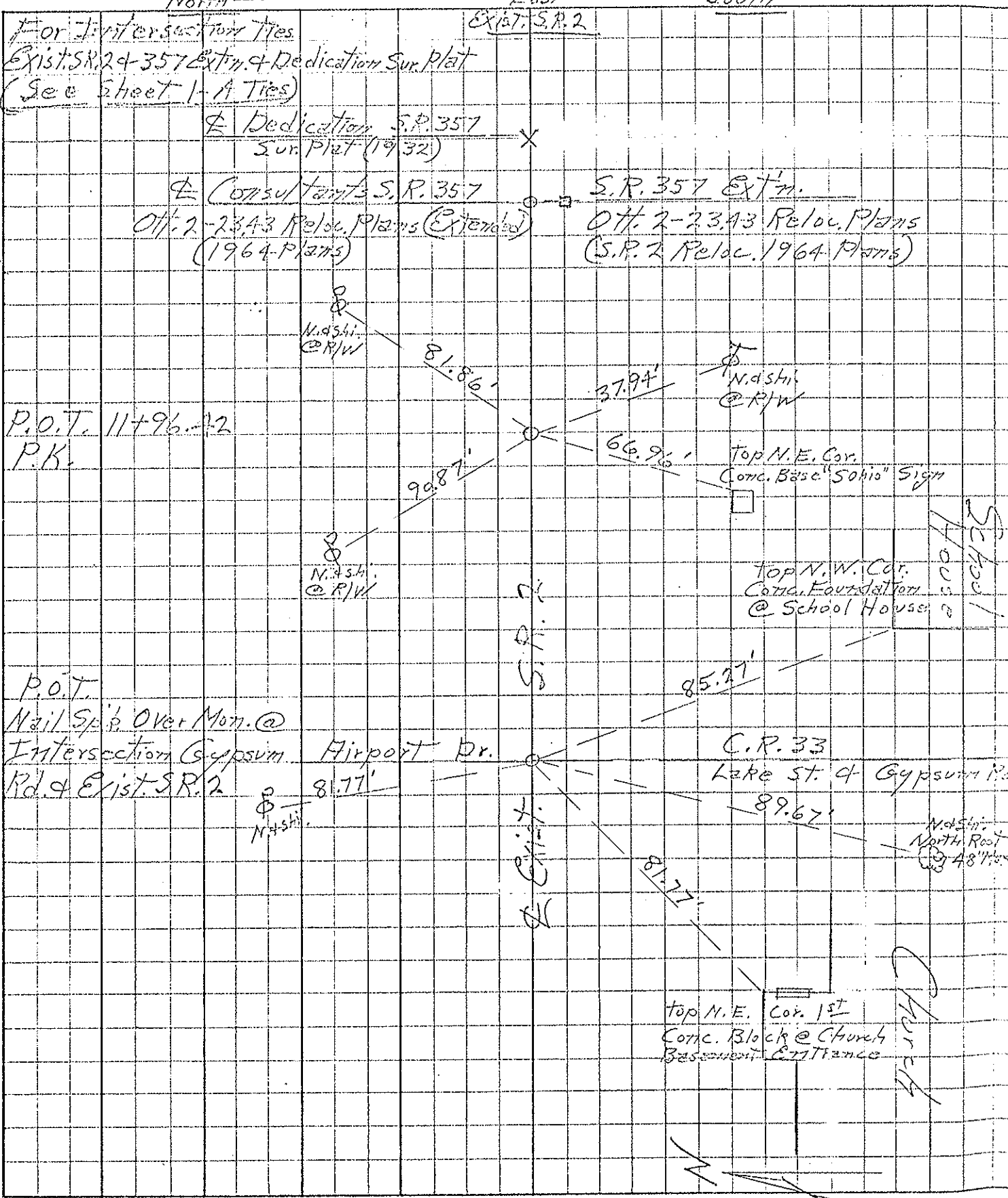
P.K. - Intersection
P.T. 56 + 98.15 Bk.
S.R. 357 =

P.T. 608 + 79.58 Htd.
S.R. 534 S.R. 357
Off. 53-8.54
Off. 163 (29.67-30.08)
952 Plans

P.T. 169 + 19 Bk
S.R. 53 =
P.O.T. 169 + 19 Bk + Htd.
S.R. 163

Note
Found Spk in Error
for Intersection.
P.O.T. Sta. 608 + 78.40 Hts.
Off. 53-11.55 (Pt. 1)
Plans - 1957

PERSONNEL H. 105 TITLE H. 105 PERSONNEL Ripple TITLE Cromley
 COUNTY Ill. 105 DATE June 23, '67
 S. R. 357 to S.R. 53+163 WEATHER Clear
 SEC. Off. 53-11.60 TEMP. 85°
 DESCRIPTION Ties - Control Points JOB NO. 02735
 North LEFT CENTER LINE East RIGHT South



For Intersection Ties
 Exist. S.R. 2 & 357 Ext'n. & Dedication Sur. Plat
 (See sheet 1-A Ties)

⊕ Dedication S.R. 357
 Sur. Plat (1932) X

⊕ Consultants S.R. 357
 Off. 2-23.43 Reloc. Plans (Extended)
 (1964 Plans)

⊕
 N. 1/4 Sh.
 @ R/W

⊕
 N. 1/4 Sh.
 @ R/W

P.O.T. 11+96.72
 P.K.

Top N.E. Cor.
 Conc. Base "Sohio" Sign

⊕
 N. 1/4 Sh.
 @ R/W

Top N.W. Cor.
 Conc. Foundation
 @ School House

P.O.T.
 Nail Sp. p. Over Mon. @
 Intersection Gypsum
 Rd. & Exist. S.R. 2

⊕
 N. 1/4 Sh.

EXIST.
 S.R. 2

EXIST.
 S.R. 2

Airport Dr.
 81.77'

C.R. 33
 Lake St. & Gypsum Rd.

N. 1/4 Sh.
 North Root
 @ 48' base

Top N.E. Cor. 1st
 Conc. Block @ Church
 Basement Entrance

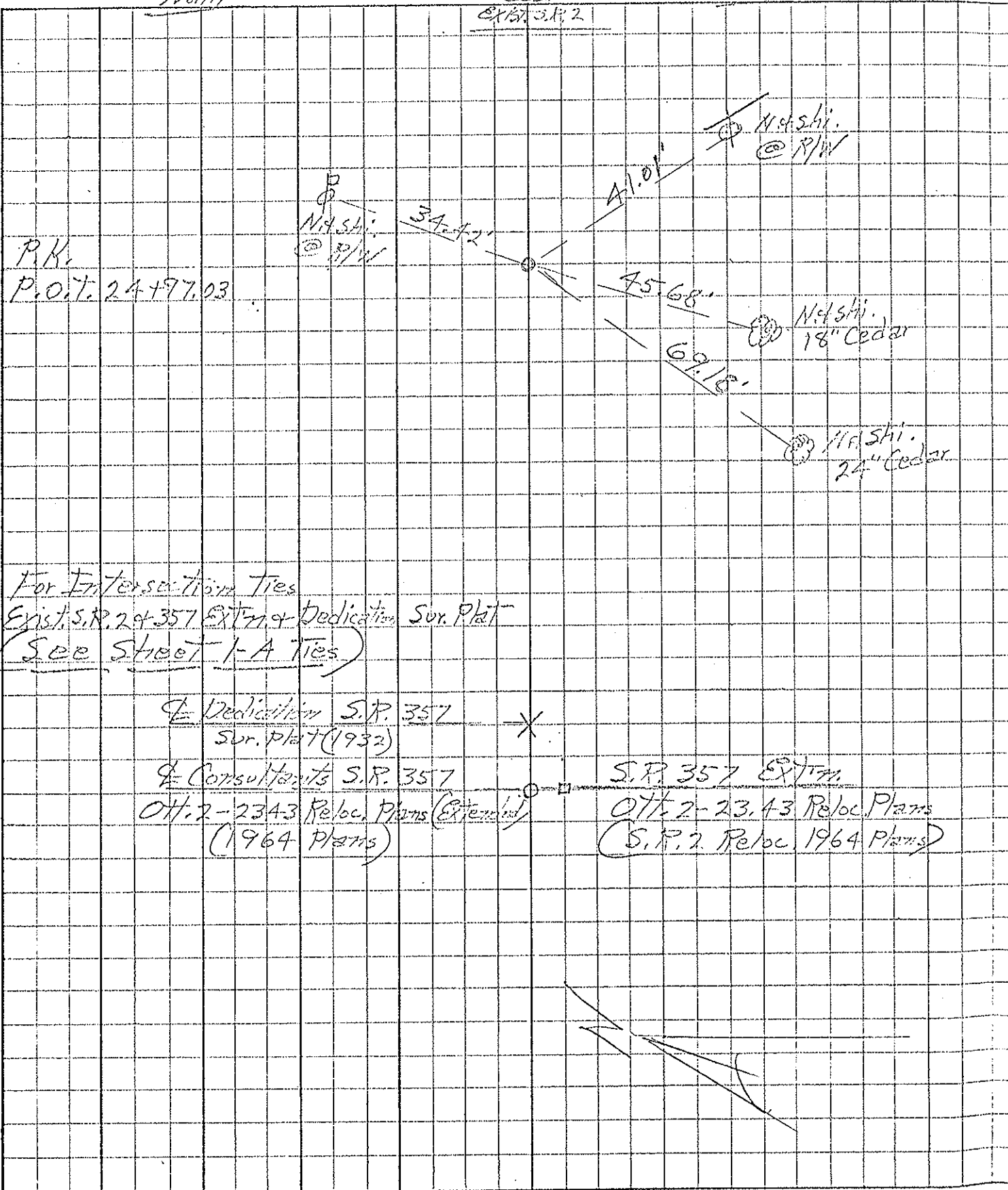
Church



PERSONNEL	TITLE	PERSONNEL	TITLE
2/H 105	Fish & Cromin		
	Ripple		
	Geyman		
	Henderson		

COUNTY Ottawa DATE June 22, '67
 S. R. 357 to S.R. 534/63 WEATHER Clear
 SEC. Off. 53-11.60 TEMP. 85°

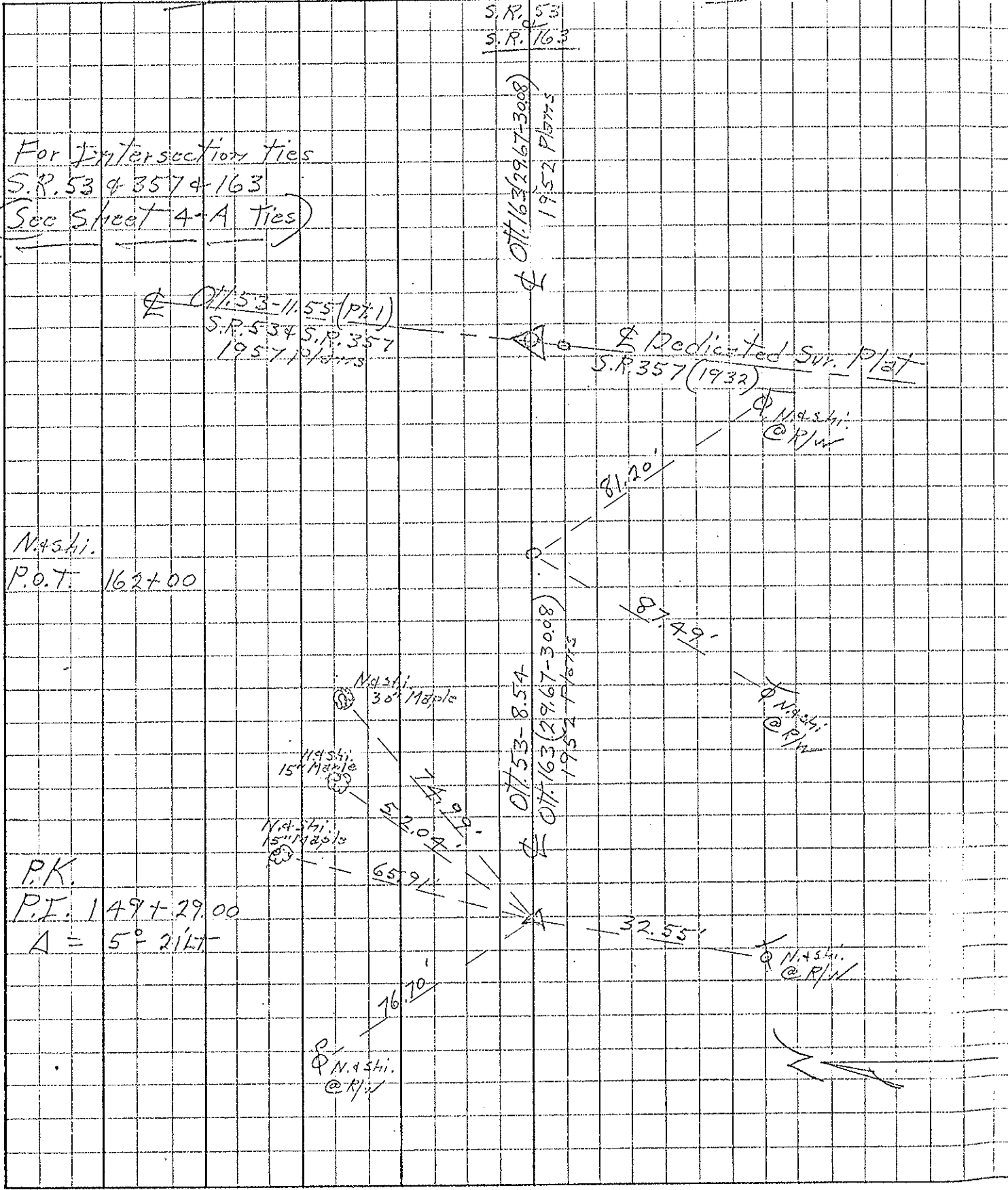
DESCRIPTION Ties - Control Points EXIST. S.R. 2 JOB NO. 02735
North LEFT CENTER LINE - East RIGHT South



PERSONNEL TITLE PERSONNEL TITLE
 2-11-105 Ashby Corbett
 Ripple
 Geyratt
 Anderson

COUNTY Ottawa DATE June 23, '67
 S. R. 357 Exist S.R. 2 North WEATHER Clear
 SEC. 011.53-11.60 TEMP. 80°

DESCRIPTION Ties - Control Points S.R. 53 & S.R. 163 JOB NO. 02735
 North LEFT CENTER LINE - East RIGHT South

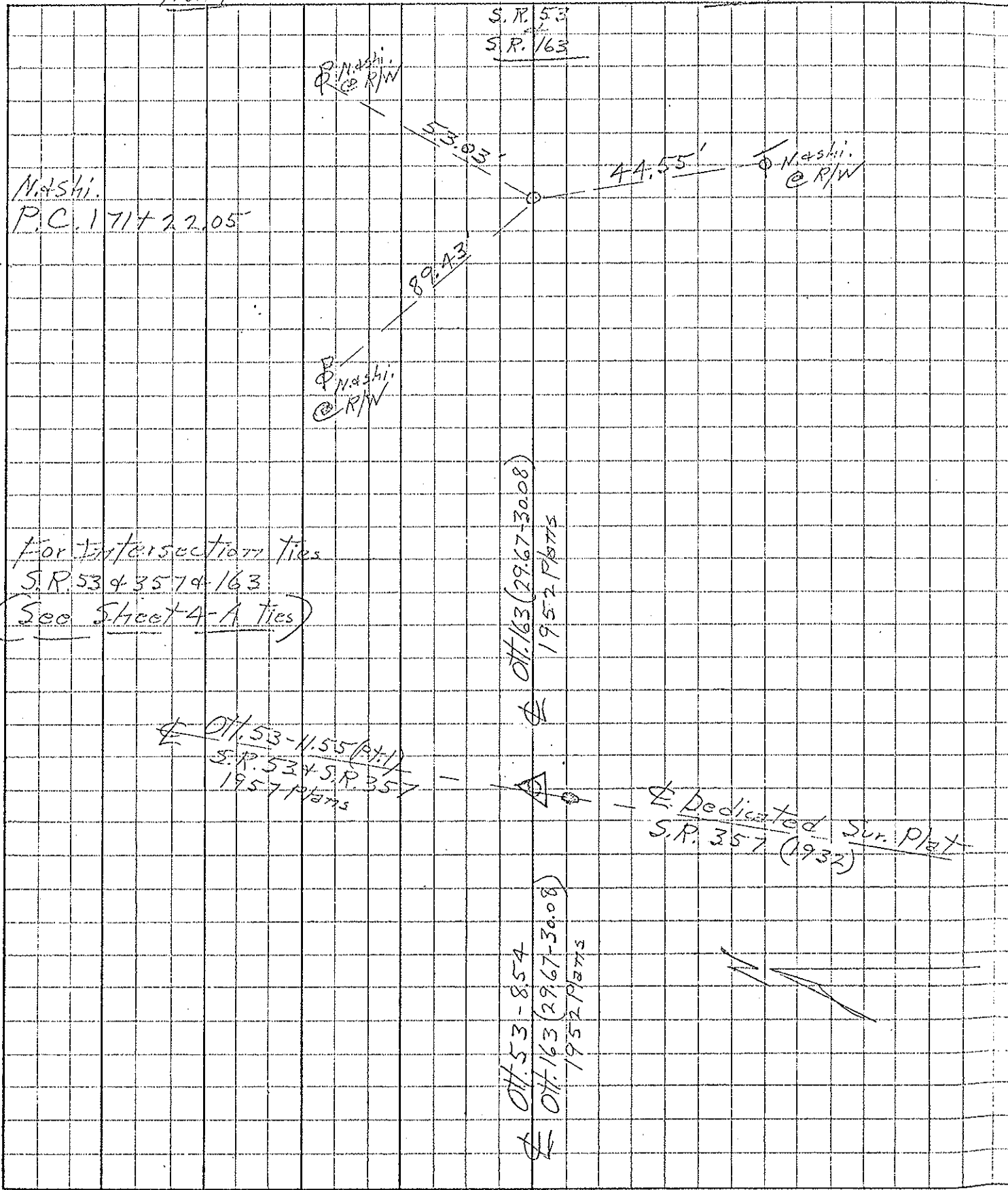


PERSONNEL TITLE PERSONNEL TITLE

2-H/105
 H. H. Crossin
 Ripple
 G. E. Mason
 Anderson

COUNTY Ottawa DATE June 23, '67
 Exist. S.R. 2 North
 S. R. 357 to S.R. 53+163 WEATHER Clear
 SEC. Ott. 53-11.60 TEMP. 85°

DESCRIPTION Ties - Control Points S.R. 53 & S.R. 163 JOB NO. 02735
North LEFT CENTER LINE East RIGHT South



N. Ashi.
 P.C. 171+22.05'

S.R. 53
 S.R. 163

N. Ashi.
 @ R/W

53.05'

44.55'

N. Ashi.
 @ R/W

89.43'

N. Ashi.
 @ R/W

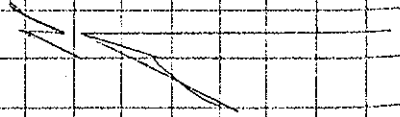
For Intersection ties
 S.R. 53 & 357 & 163
 (See Sheet 4-A Ties)

Ott. 163 (29.67-30.08)
 1957 Plans

Ott. 53-11.55 (Pt. 1)
 S.R. 53 & S.R. 357
 1957 Plans

Dedicated Sur. Plat
 S.R. 357 (1932)

Ott. 53-8.54
 Ott. 163 (29.67-30.08)
 1957 Plans



PERSONNEL TITLE PERSONNEL TITLE

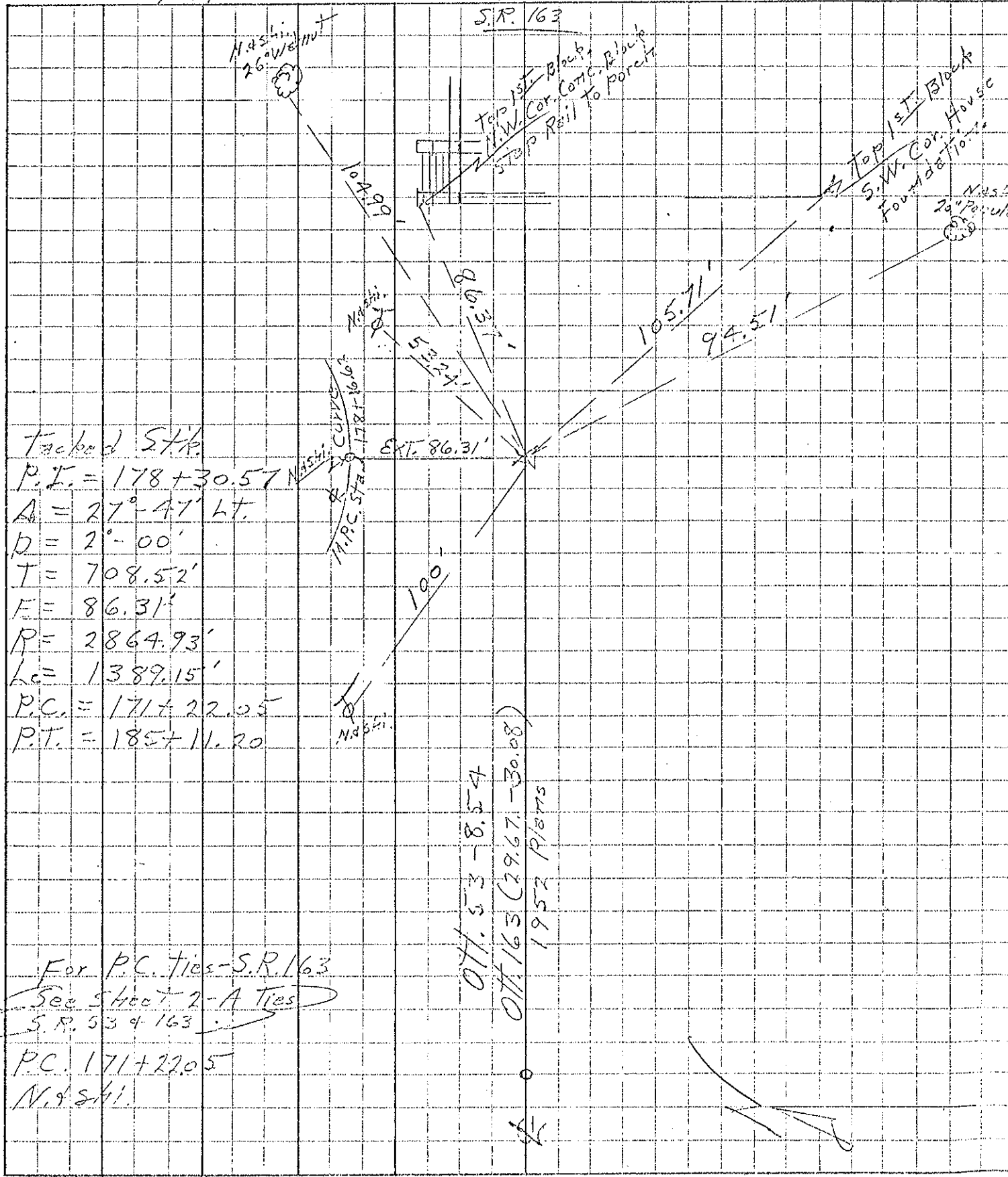
2-H-105 H. S. Cronin
Ripala
Anderson

COUNTY Ottawa DATE Dec. 15, '67

S. R. 357 Exist. S.R. 2 North WEATHER Clear
To S.R. 53 + 163

SEC. Ott. 53-11.60 TEMP. 25°

DESCRIPTION Ties & Control Points S.R. # 163 JOB NO. 02735
North LEFT CENTER LINE East RIGHT South



Tacked STA
 P.I. = 178+30.57
 A = 27°-47' Lt.
 D = 2°-00'
 T = 708.52'
 F = 86.31'
 R = 2864.93'
 Lc = 1389.15'
 P.C. = 171+22.05
 P.T. = 185+11.20

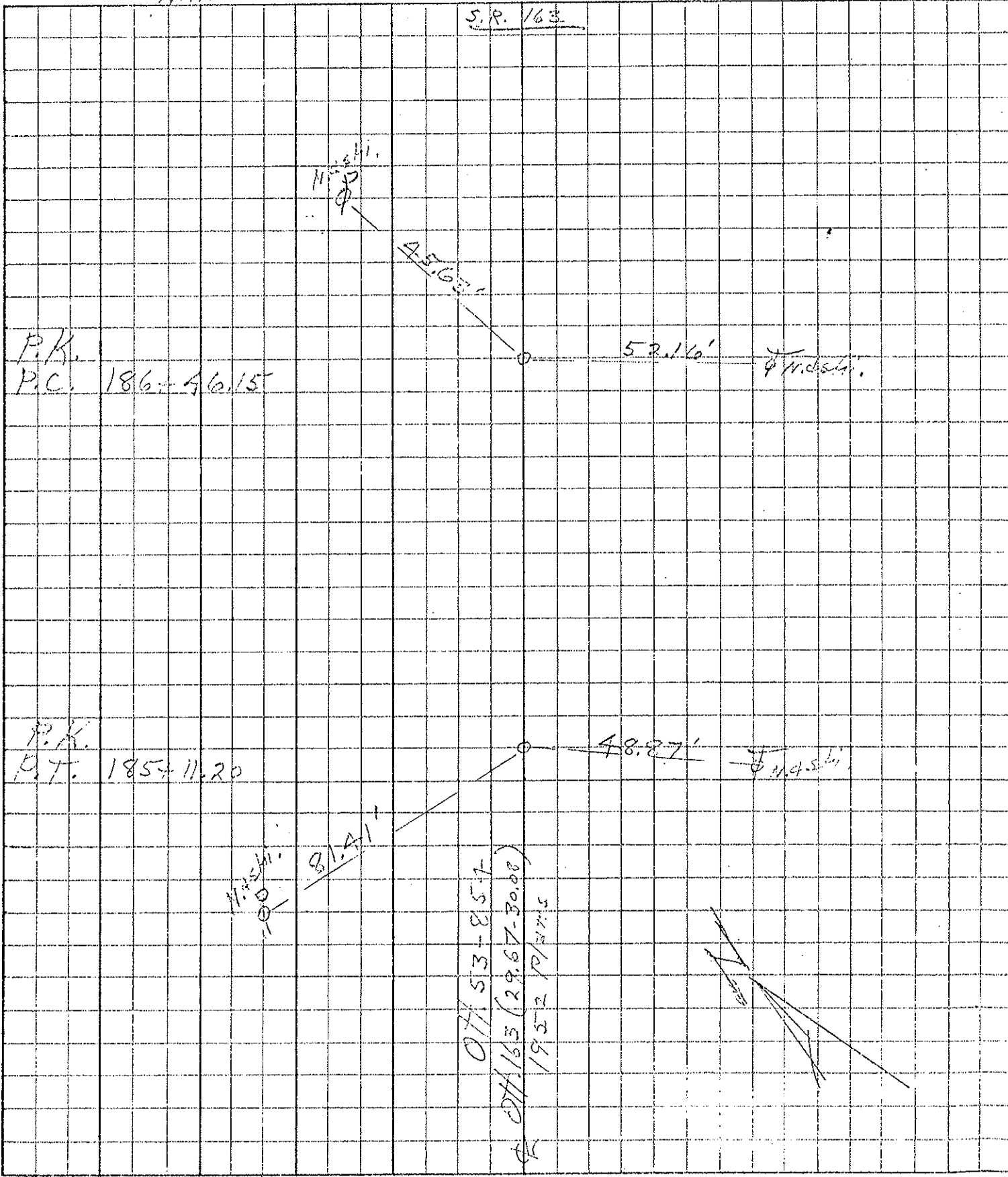
For P.C. Ties - S.R. 163
 See Sheet 2-A Ties
 S.R. 53 & 163
 P.C. 171+22.05
 N. & S. H.

Ott. 53-8.24
 Ott. 163 (29.67-30.08)
 1952 P/1875

PERSONNEL TITLE PERSONNEL TITLE
 2-H-105 Field Crossing
Ripolo
Anderson

COUNTY Ottawa DATE Dec. 15, '67
 S. R. 357 to S.R. 53+163 WEATHER Clear
 SEC. 07.53-11.60 TEMP. 25°

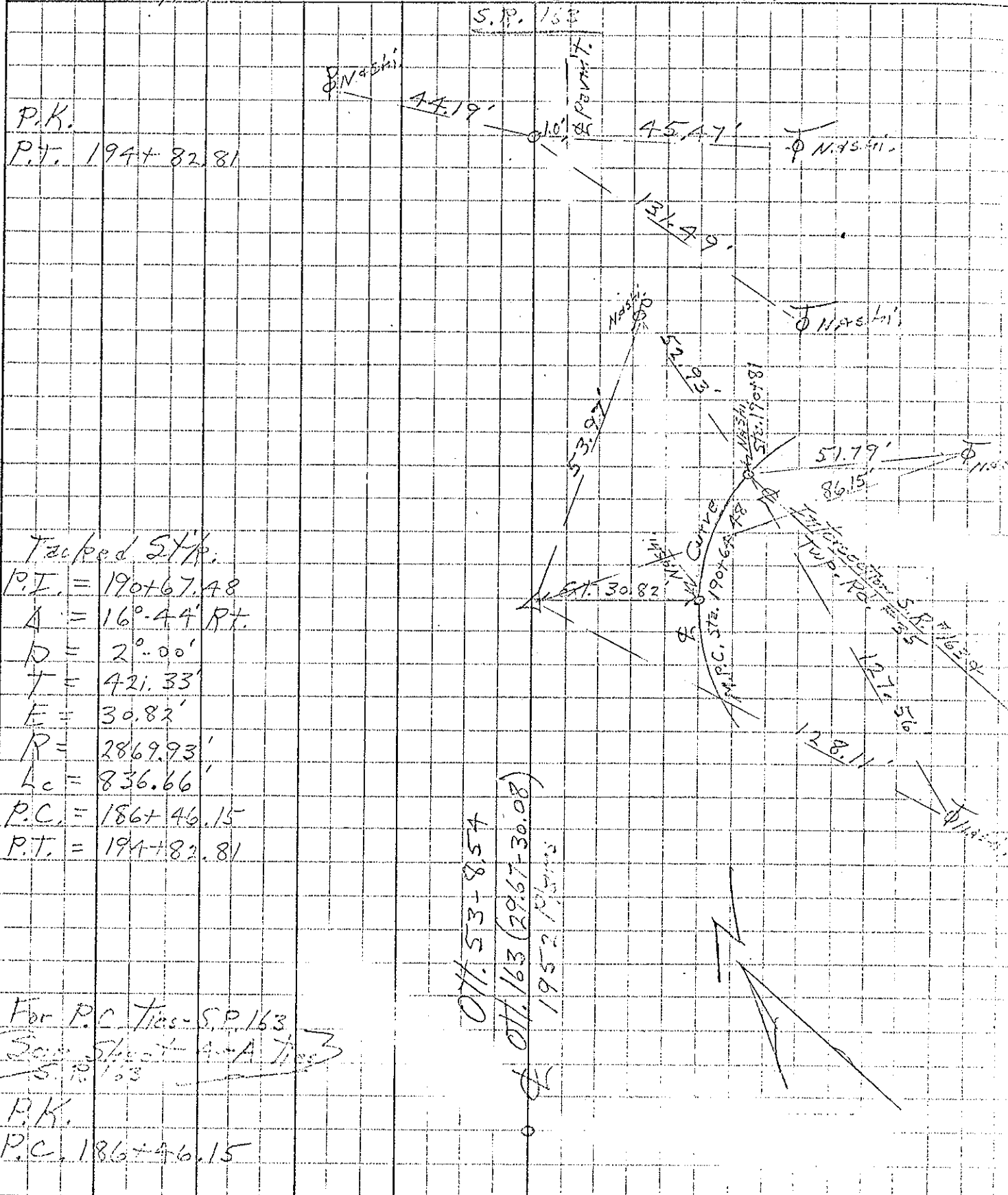
DESCRIPTION Tie & Control Points S.R. #163 JOB NO. 02735
 N.W. LEFT CENTER LINE East RIGHT S.E.



07.53-11.60
 S.R. 163 (29.67-30.00)
 1952 PLANS

2-H-105

PERSONNEL TITLE PERSONNEL TITLE COUNTY OT/PA DATE Dec. 19, 1952
H. S. Crozier Ripolo Chapman Anderson
 S. R. 357 EXIST. S.P. 2 North TO S.P. 534 WEATHER Clear
 SEC. Off. 53-11.60 TEMP. 35°
 DESCRIPTION Time of Control Points S.P. #163 JOB NO. 02735
N.W. LEFT CENTER LINE East RIGHT S.E.



Tacked S.P.
 P.I. = 190+67.48
 Δ = 16°-44' RT.
 D = 2°-00'
 T = 421.33'
 E = 30.82'
 R = 2869.93'
 Lc = 836.66'
 P.C. = 186+46.15
 P.T. = 194+82.81

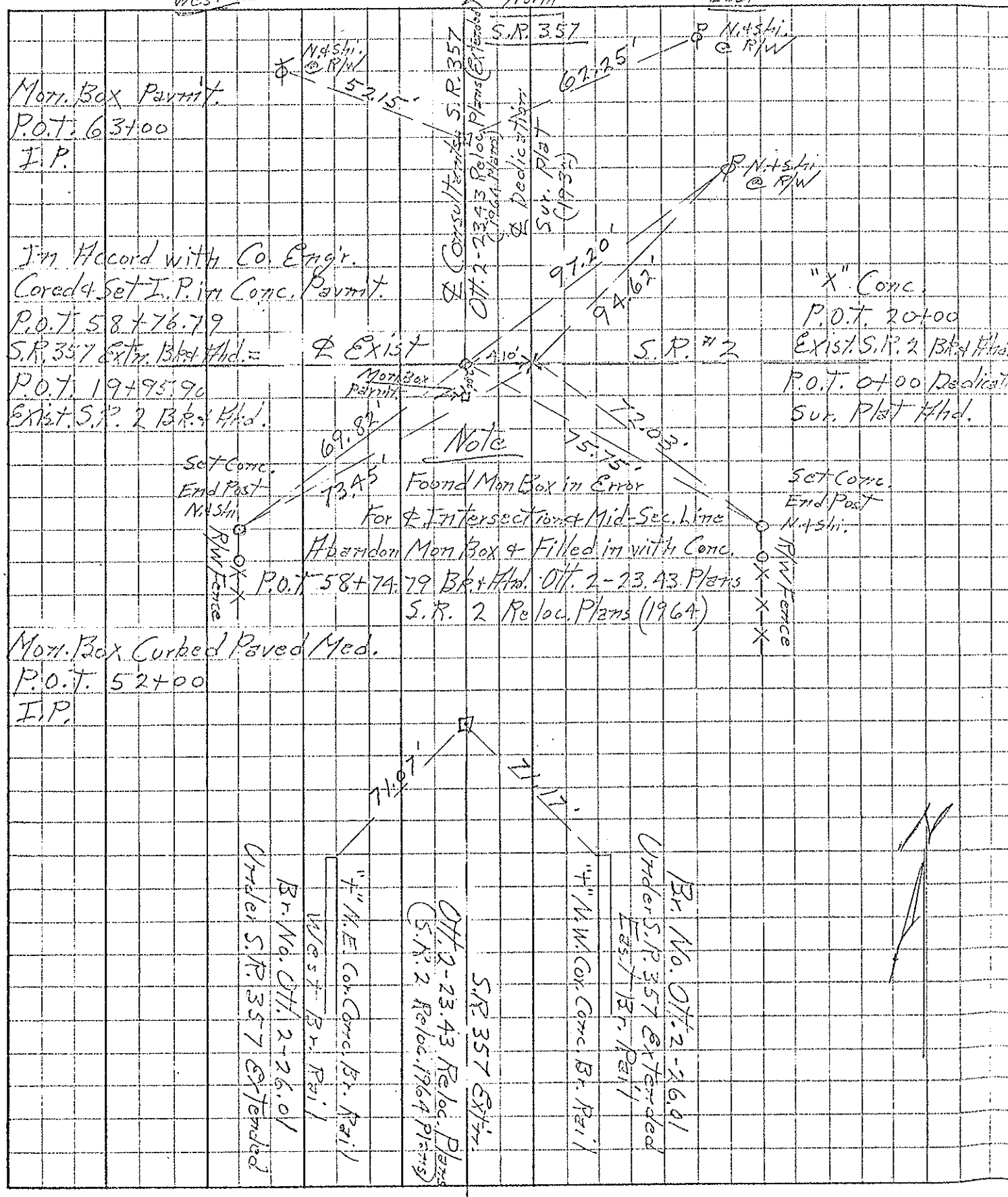
Off. 53-8.54
 Off. 163 (29.67-30.08)
 1952 10/15/52

For P.C. Ties - S.P. 163
 See Street & A Ties
 S.P. 163
 P.K.
 P.C. 186+46.15

PERSONNEL TITLE PERSONNEL TITLE
 2 H105 H. Ash & Croft
 Rippe
 Anderson (Sick Leave)

COUNTY Ottawa DATE June 21, 1967
 Exist S.R. 2 North
 S. R. 357 to S.R. 534-163 WEATHER Cloudy
 SEC. 011.53-11.60 TEMP. 80°

DESCRIPTION Ties - Control Points S.R. 357 JOB NO. 02.735
 West LEFT CENTER LINE - North RIGHT East



PERSONNEL TITLE PERSONNEL TITLE COUNTY Ontario DATE June 21, '67
2-11-105 H. Shick Croft Ripple Coyman Henderson (Sick Leave)
 S. R. 357 to S.R. 534/63 WEATHER Cloudy TEMP. 80°
 SEC. Off. 53-11.60 DESCRIPTION Ties - Control Points S.R. 357 JOB NO. 02735
 West LEFT CENTER LINE North RIGHT East

