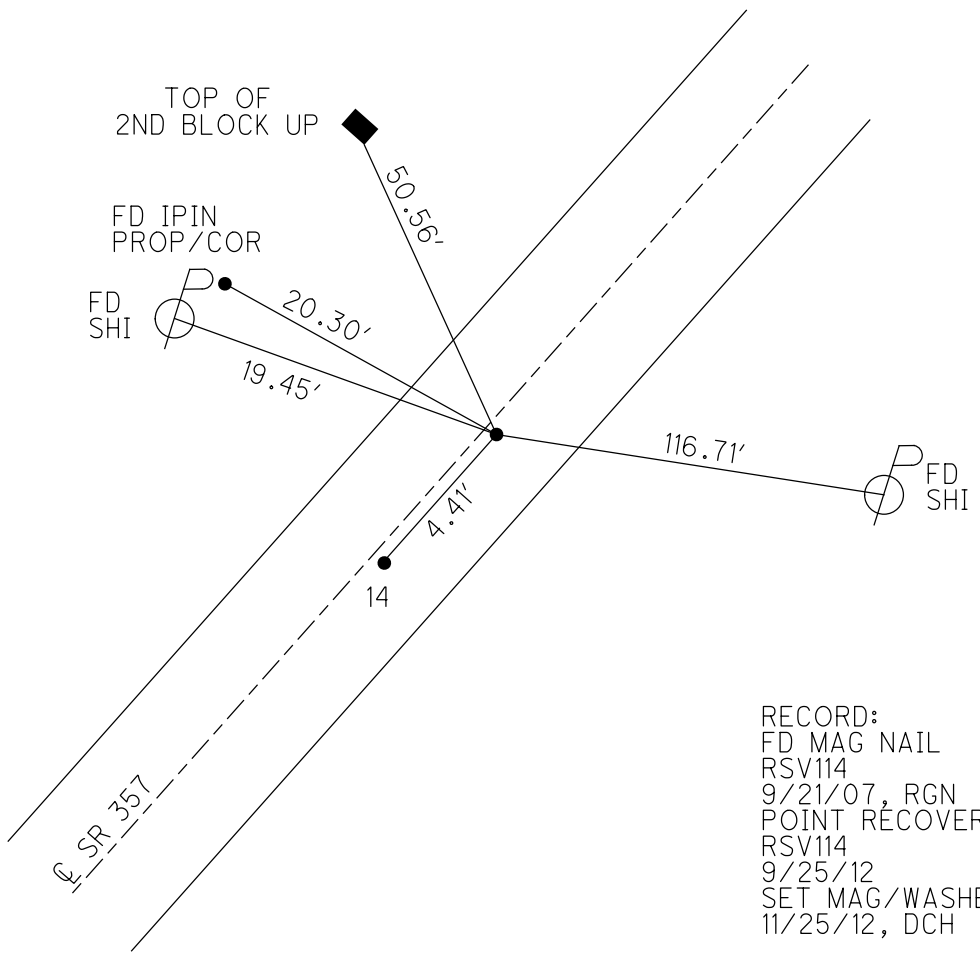
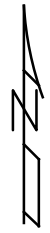


O.D.O.T. DISTRICT 2 SURVEY OFFICE (USE ONLY)

PERSONNEL \_\_\_\_\_ REFERENCE NO. 14 A SHEET 24 OF 27  
NOTES HOMAN DATE 11/25/12 ROUTE SR 357  
H.C. HOMAN WEATHER PTLY CLOUDY COUNTY OTTAWA  
R.C. ROUSOS TEMP. 53° SOUTH BASS  
ISLAND  
DWG BY RHOADES PID 25525

TYPE MONUMENT MAG NAIL  
ON SURFACE - ~~BELOW~~ ON \_\_\_\_\_  
OFFSET 0.9' RT : RT  
7.0' TO RT EDGE PAVEMENT  
STATION: 119+73.26

HORIZ.DATUM: NAD 1983 GEOID: 2003  
GRID: NORTHING: 728019.126 EASTING: 1887225.857



RECORD:  
FD MAG NAIL  
RSV114  
9/21/07, RGN  
POINT RECOVERED  
RSV114  
9/25/12  
SET MAG/WASHER  
11/25/12, DCH

# O.D.O.T. DISTRICT 2 SURVEY OFFICE

PERSONNEL \_\_\_\_\_

REFERENCE NO. \_\_\_\_\_

SHEET \_\_\_\_\_ OF \_\_\_\_\_

NOTES Huss

H.C. Ryan

R.C. Huss

DATE 9-21-07

WEATHER Clear - Fair

TEMP. +84°F

ROUTE SR 357

COUNTY OH

TOWNSHIP \_\_\_\_\_

SECTION \_\_\_\_\_

T \_\_\_\_\_ R \_\_\_\_\_

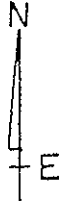
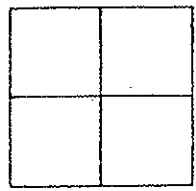
TYPE MONUMENT (A) Mini Mag (B) Mag

ON SURFACE - BELOW (A) Surf (B) Surf

LEFT - CL PAV'T. - (RIGHT) (A) 0.9 Rt (B) 0.9 Rt

7.0 TO RT EDGE PAVEMENT (B) 7.0' Rt

S.L.M. \_\_\_\_\_



$A - B = 4.41'$

Top of  
2nd block  
up

