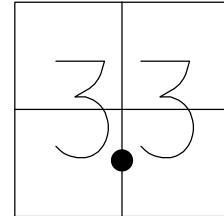


O.D.O.T. DISTRICT 2 SURVEY OFFICE (USE ONLY)

PERSONNEL \_\_\_\_\_ REFERENCE NO. 1 SHEET 1 OF 3  
 NOTES MILLER DATE 12/29/23 ROUTE SR 358  
 H.C. MILLER WEATHER CLOUDY COUNTY OTTAWA  
 R.C. RHOADES TEMP. 39° TOWNSHIP ERIE  
 SECTION 33  
 DWG BY RHOADES PID PAVING TRAIN T 8 N R 16 E

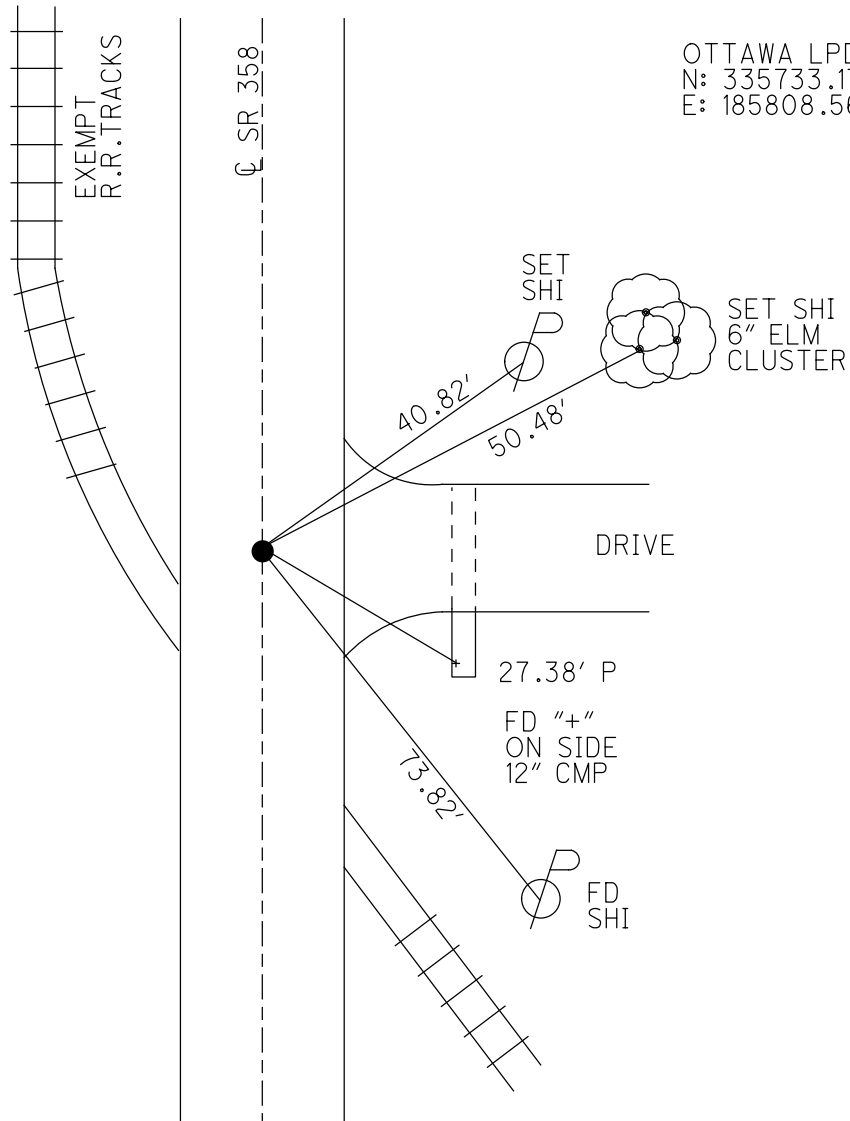
TYPE MONUMENT MAG/WASHER  
 ON SURFACE - ~~BELOW~~ ON  
 OFFSET  $\varnothing$  PAVEMENT ON LT : RT  
10.1' TO LT EDGE PAVEMENT  
 STATION: 13+69.06



HORIZ.DATUM: NAD83 2011 GEOID: NAVD88 2018  
 GRID: NORTHING: 676001.550 EASTING: 1825962.281

RECORD:  
 FD R.R.SPIKE  
 6/16/71  
 SET P.K./WASHER  
 7/27/81, CL  
 SET MAG/WASHER  
 REF1  
 6/16/16, JFO  
 FD MAG/WASHER  
 REF1  
 8/30/23, TDN  
 SET MAG/WASHER  
 12/29/23, JAM

OTTAWA LPD:  
 N: 335733.173  
 E: 185808.565



DRIVE

27.38' P

FD "+"  
 ON SIDE  
 12" CMP

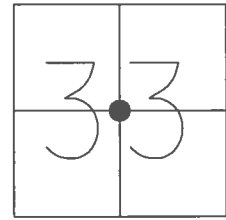
73.82'

FD  
 SHI

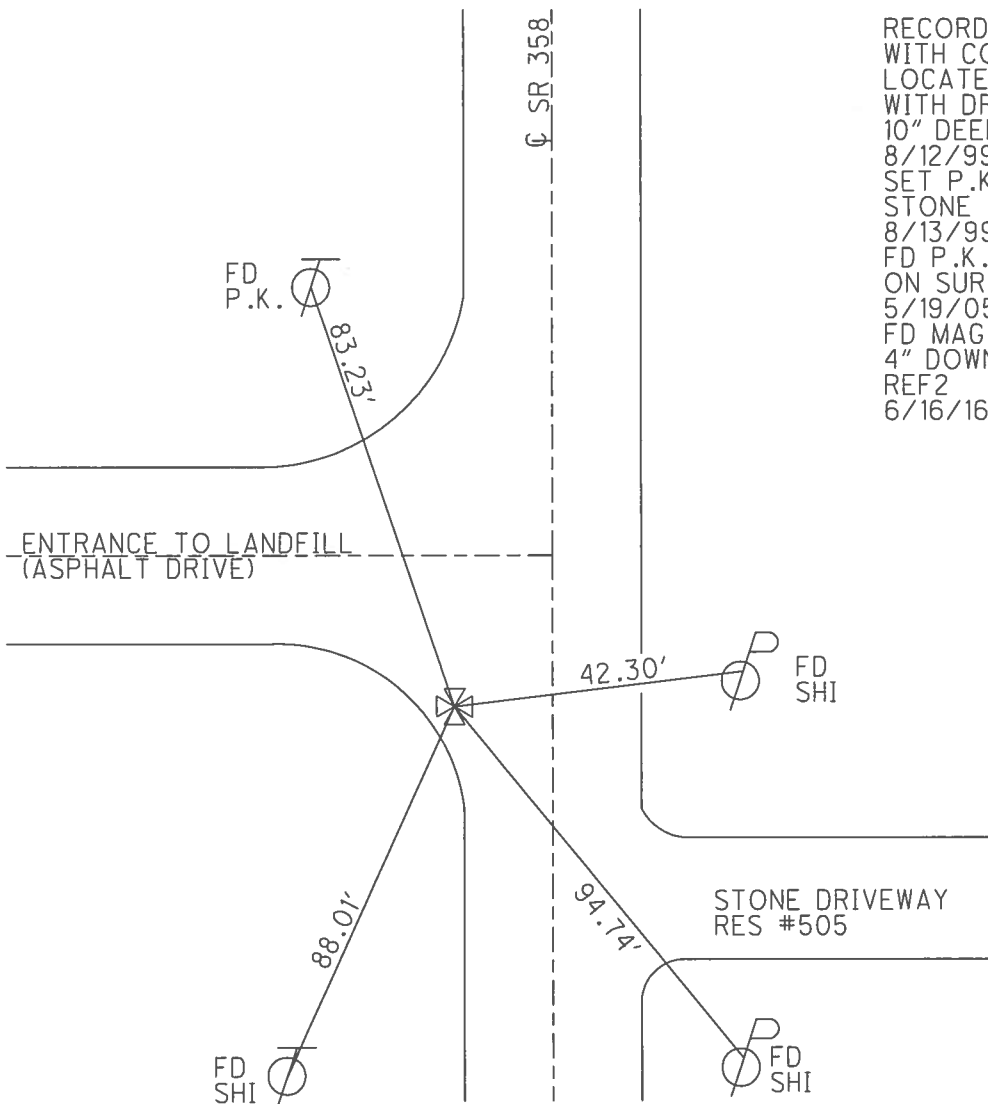
O.D.O.T. DISTRICT 2 SURVEY OFFICE (USE ONLY)

PERSONNEL \_\_\_\_\_ REFERENCE NO. 2 SHEET 2 OF 3  
 NOTES RHOADES DATE 6/16/16 ROUTE SR 358  
 H.C. O'DONNELL WEATHER CLOUDY COUNTY OTTAWA  
 R.C. KEFFER TEMP. 82° TOWNSHIP ERIE  
 SECTION 33  
 T 7 N R 16 E

TYPE MONUMENT MAG NAIL  
~~ON SURFACE~~ - BELOW 4"  
 LEFT - CL PAV'T - ~~RIGHT~~ 12.2'  
2' LT TO LT EDGE PAVEMENT  
 S.L.M. 20+87.50



GRID: NORTHING: 676749.743 EASTING: 1825976.432



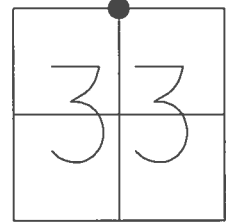
RECORD:  
 WITH COUNTY CREW  
 LOCATED STONE  
 WITH DRILL HOLE  
 10" DEEP  
 8/12/99, CL  
 SET P.K. ATOP  
 STONE  
 8/13/99  
 FD P.K.NAIL  
 ON SURFACE  
 5/19/05, RN  
 FD MAG NAIL  
 4" DOWN  
 REF2  
 6/16/16, JFO

O.D.O.T. DISTRICT 2 SURVEY OFFICE (USE ONLY)

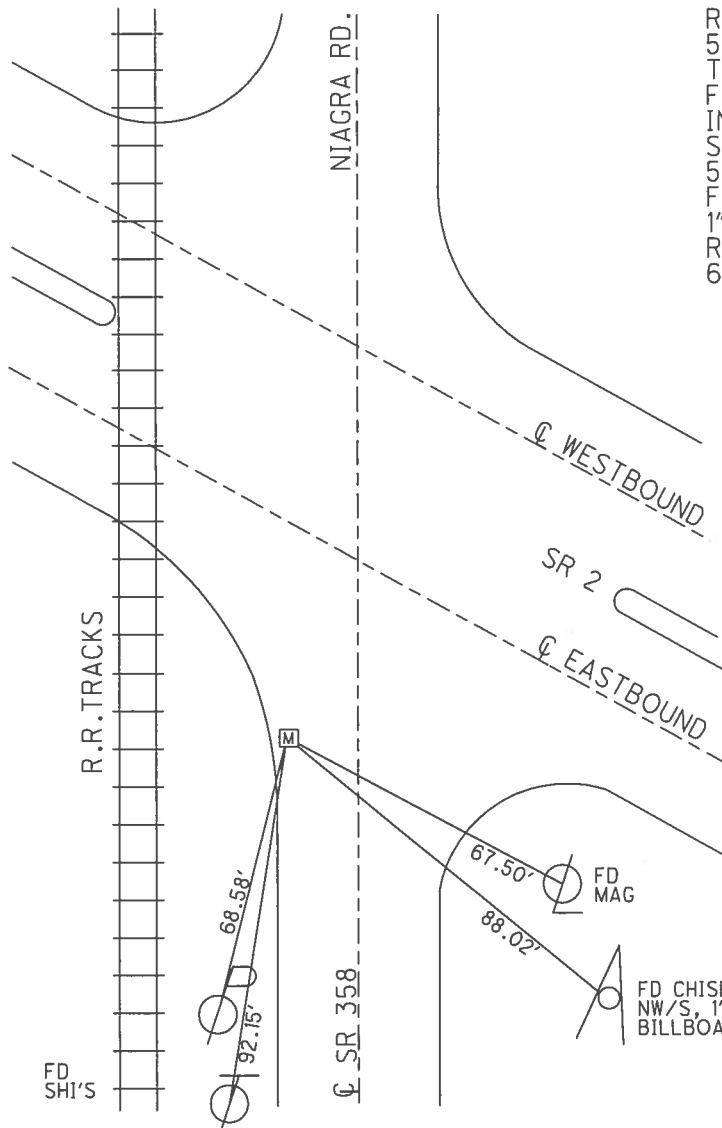
PERSONNEL \_\_\_\_\_ REFERENCE NO. 3 SHEET 3 OF 3

NOTES RHOADES DATE 6/16/16 ROUTE SR 358  
 H.C. O'DONNELL WEATHER CLOUDY COUNTY OTTAWA  
 R.C. KEFFER TEMP. 82° TOWNSHIP ERIE  
 \_\_\_\_\_ SECTION 33  
 \_\_\_\_\_ T 7 N R 16 E

TYPE MONUMENT MONBOX  
 ON SURFACE - ~~BELOW~~ ON \_\_\_\_\_  
 LEFT - ☉ PAV'T - RIGHT 13", 71" S. OF SR 2  
0.9' TO LT EDGE PAVEMENT  
 S.L.M. 47+30  
 GRID: NORTHING: 679390.524 EASTING: 1826070.610



RECORD:  
 5" X 7" X 6"  
 TRIANGULAR STONE  
 FD 1" SQ. IPIN  
 IN MONBOX OVER  
 STONE  
 5/19/05, RGN  
 FD MONBOX W/  
 1" SQ. IPIN  
 REF3  
 6/16/16, JFO

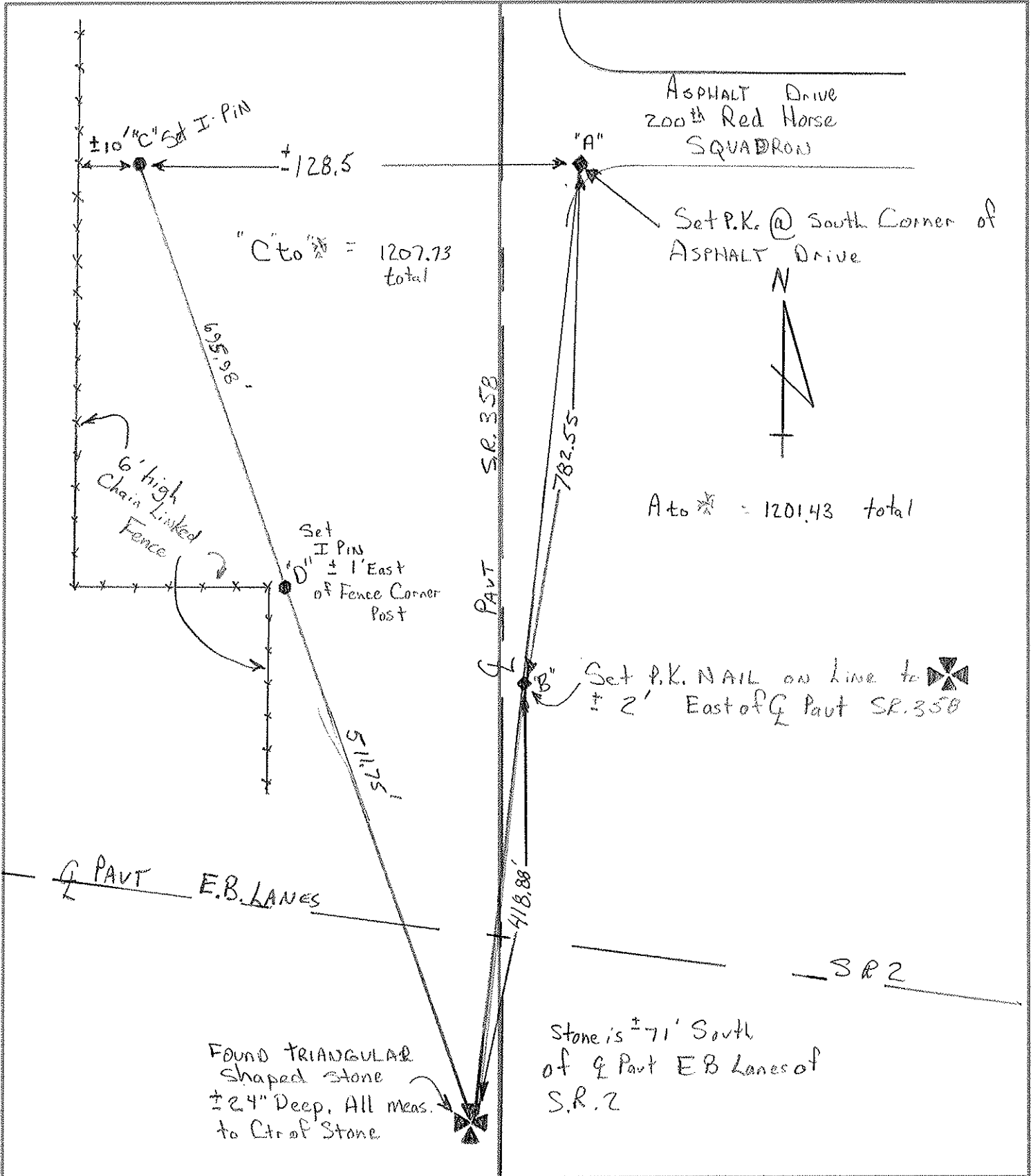


FD CHISELED "+"  
 NW/S, 1' UP±  
 BILLBOARD POST

PERSONNEL	TITLE	PERSONNEL	TITLE	COUNTY	DATE
C. LOENKE	JD			OTT	8-13-99
T. ROSSOS	A			S.R. 2	WEATHER Cloudy
				SEC. 23.461	TEMP. +76°

DESCRIPTION TRANSIT TIES - North 1/4 Section 33 Erie Twp JOB NO. \_\_\_\_\_

LEFT CENTER LINE RIGHT



# O.D.O.T. DISTRICT 2 SURVEY OFFICE

PERSONNEL \_\_\_\_\_

REFERENCE NO. \_\_\_\_\_

SHEET \_\_\_\_\_ OF \_\_\_\_\_

NOTES LOEHRKE

H.C. CARDEN

R.C. LOEHRKE

DATE 12-8-98

WEATHER Cloudy

TEMP. +40

ROUTE SR 358

COUNTY OTT.

TOWNSHIP ERIE

SECTION 28

T. --- R. ---

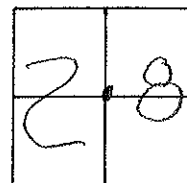
TYPE MONUMENT 2 Lg RR Spikes

ON SURFACE - BELOW \_\_\_\_\_

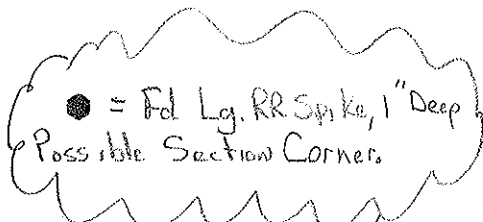
LEFT -  $\odot$  PAV'T. - RIGHT \_\_\_\_\_

\_\_\_\_\_ TO \_\_\_\_\_ EDGE PAVEMENT

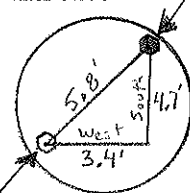
S.L.M. \_\_\_\_\_



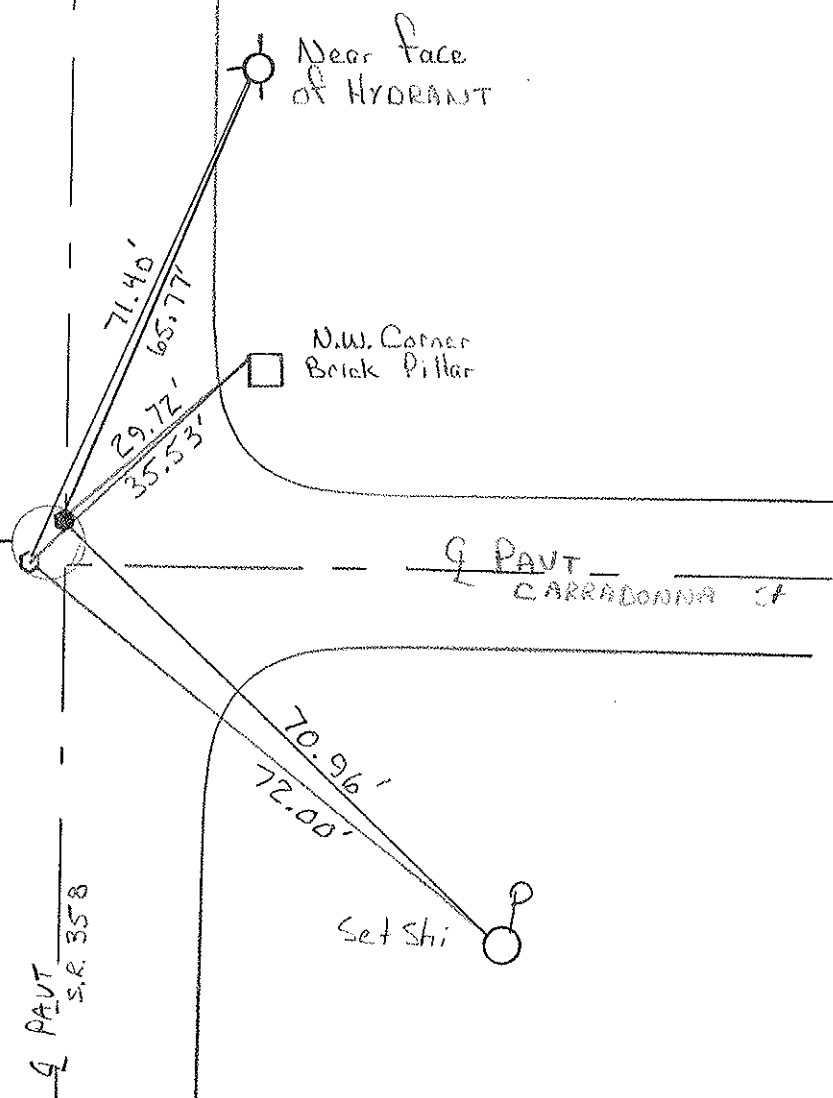
1/2 mile North of  
Junction S.R. 2 &  
SR 358



Detail



○ = Lg R.R. SPIKE We used  
for this Project. This SPIKE  
is ± 3.4' west of & 4.7' South  
of other SPIKE



PERSONNEL	TITLE	PERSONNEL	TITLE	COUNTY	DATE
CRAIG LOEHRKE				OTT	10-8-99
TOM ROUSSOS				S.R. S.R.2	WEATHER Cloudy
				SEC. 23.240	TEMP +62°
DESCRIPTION Placement of New Boxes				JOB NO.	420120

