

O.D.O.T. DISTRICT 2 SURVEY OFFICE (USE ONLY)

PERSONNEL _____ REFERENCE NO. 2 SHEET 2 OF 3

NOTES RHOADES DATE 6/16/16 ROUTE SR 358
 H.C. O'DONNELL WEATHER CLOUDY COUNTY OTTAWA
 R.C. KEFFER TEMP. 82° TOWNSHIP ERIE
 SECTION 33
 T 7 N R 16 E

TYPE MONUMENT MAG NAIL

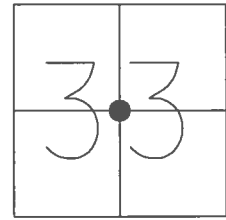
~~ON SURFACE~~ - BELOW 4"

LEFT - CL PAV'T - ~~RIGHT~~ 12.2'

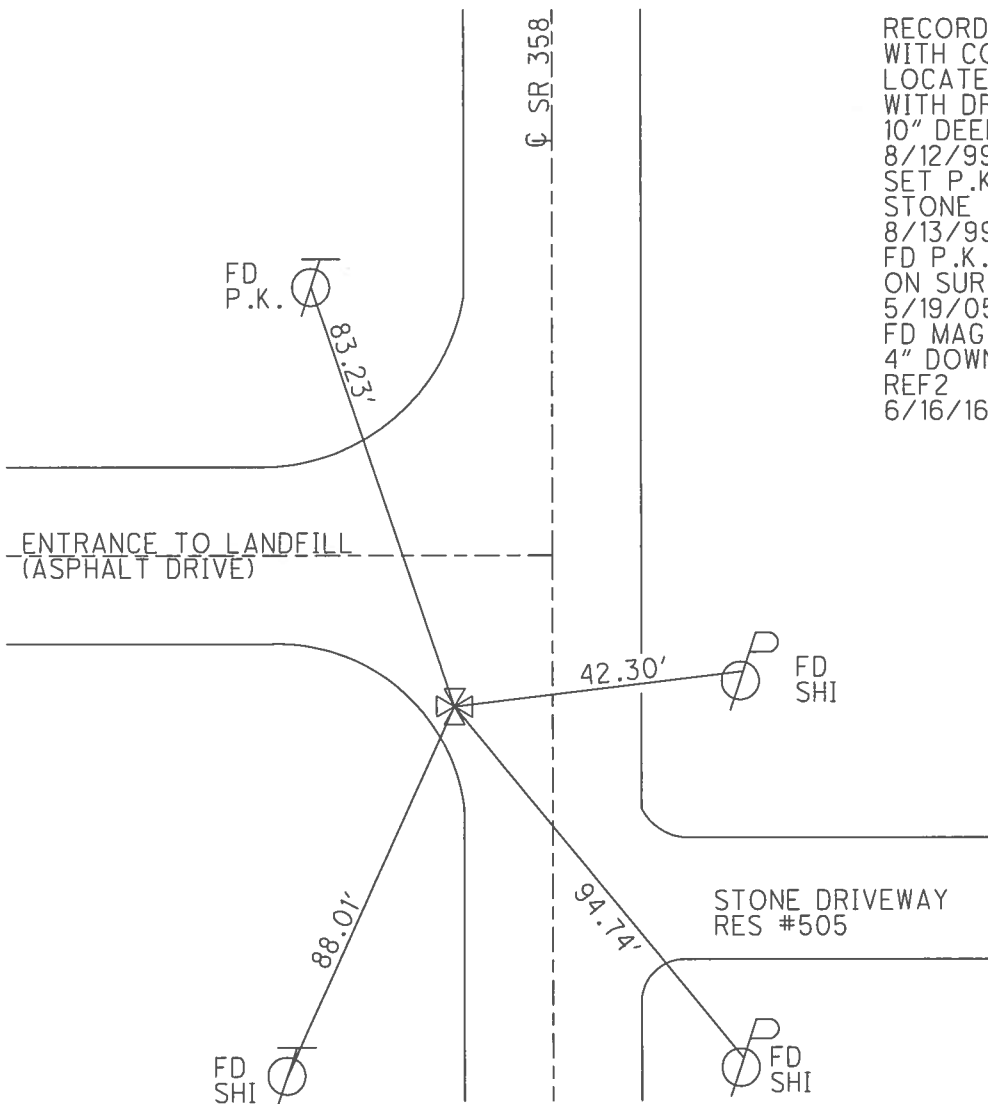
2' LT TO LT EDGE PAVEMENT

S.L.M. 20+87.50

GRID: NORTHING: 676749.743 EASTING: 1825976.432



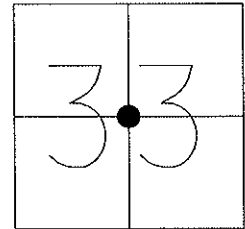
RECORD:
 WITH COUNTY CREW
 LOCATED STONE
 WITH DRILL HOLE
 10" DEEP
 8/12/99, CL
 SET P.K. ATOP
 STONE
 8/13/99
 FD P.K.NAIL
 ON SURFACE
 5/19/05, RN
 FD MAG NAIL
 4" DOWN
 REF2
 6/16/16, JFO



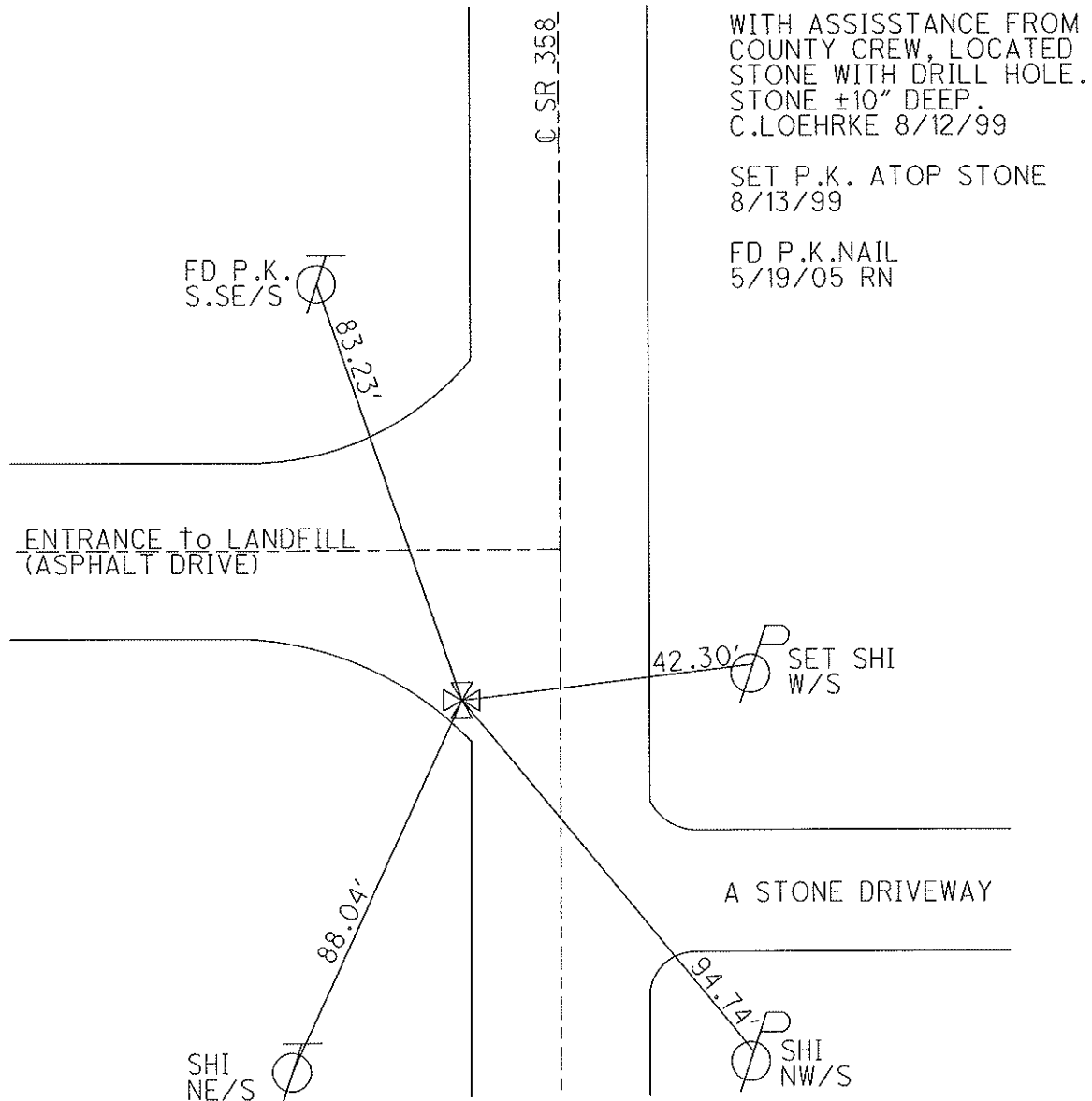
O.D.O.T. DISTRICT 2 SURVEY OFFICE

| | | |
|-----------------------|------------------------|----------------------------|
| PERSONNEL | REFERENCE NO. <u>2</u> | SHEET <u>1</u> OF <u>2</u> |
| NOTES <u>R.NUHFER</u> | DATE <u>5/19/05</u> | ROUTE <u>SR 358</u> |
| H.C. <u>D.HOMAN</u> | WEATHER <u>CLOUDY</u> | COUNTY <u>OTTAWA</u> |
| R.C. <u>J.HERALD</u> | TEMP. <u>62°</u> | TOWNSHIP <u>ERIE</u> |
| | | SECTION <u>33</u> |
| | | T <u>7</u> N R <u>16</u> E |

TYPE MONUMENT P.K.NAIL
 ON SURFACE - ~~BELOW~~ ON
 LEFT - C PAV'T - ~~RIGHT~~ LT
±2' TO LT EDGE PAVEMENT
 S.L.M. 20+87.50



Grid: Northing: 676749.748 Easting: 1825976.397



O.D.O.T. DISTRICT 2 SURVEY OFFICE

PERSONNEL

REFERENCE NO. 2

SHEET OF

NOTES C. LOEHRKE

H.C. T. Rousos

R.C. C.L.

DATE 8-12-99

WEATHER FAIR

TEMP. +82°

ROUTE SR 358

COUNTY OTT

TOWNSHIP ERIC

SECTION 33

T. 7 N. R. 16 E

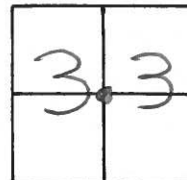
TYPE MONUMENT STONE - w/Drill hole

~~ON~~ SURFACE - BELOW 10"

LEFT - ℄ PAV'T. - RIGHT Lt

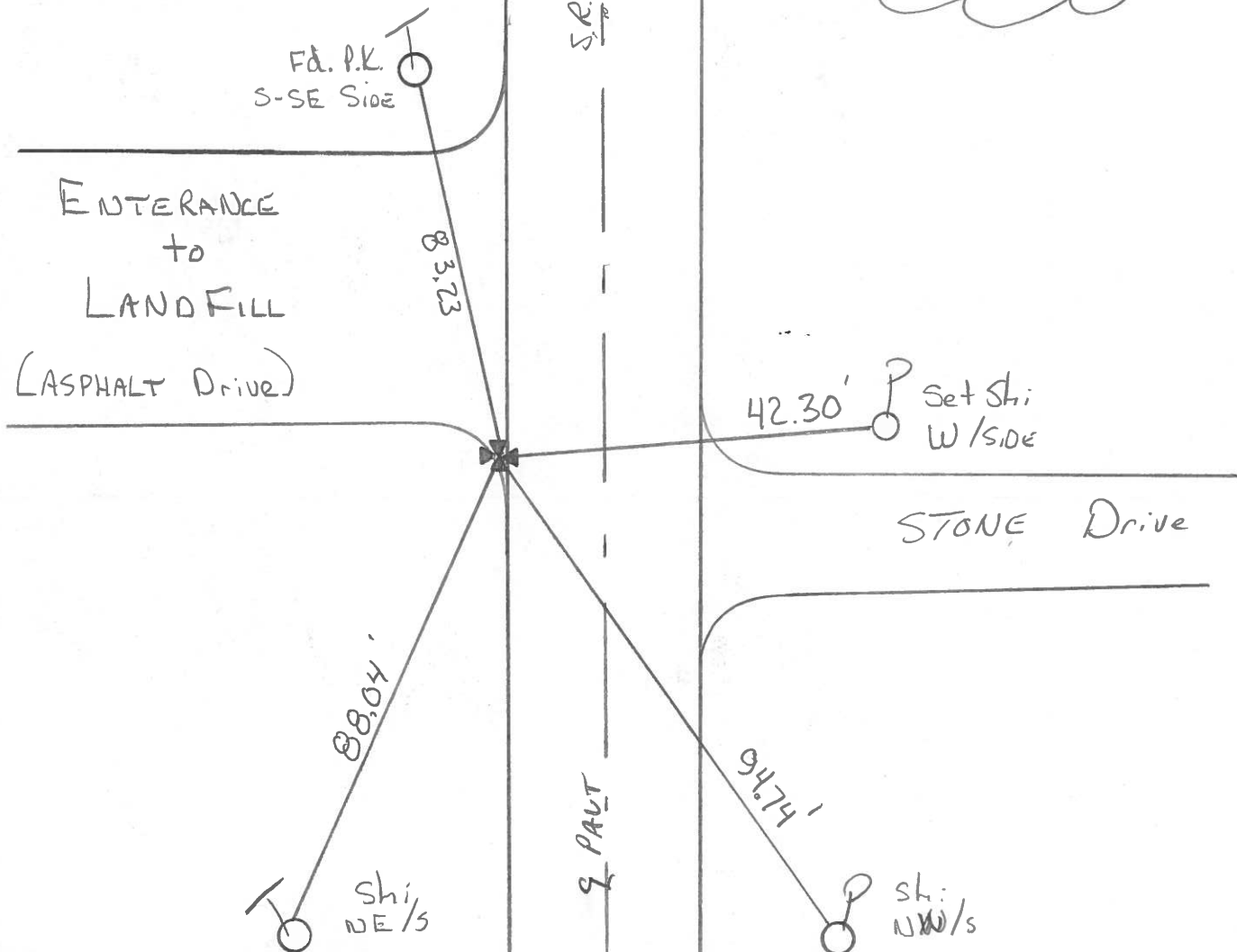
±2' TO Lt EDGE PAVEMENT

S.L.M.



With Assistance from County Crew, Locate Stone with Drill hole - Stone ±10" Deep
C. LOEHRKE - 8-12-99

Set P.K. atop Stone
8-13-99



County OTTAWA S.R. 358

Date 7-27-81

Township ERIE

Weather cloudy

Section 33

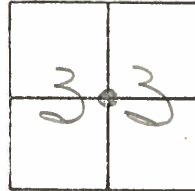
Temp. +75°

T8N, R16E

Personnel HOFFmax

Householder

Loehrke



#2

B.F.I. LANDFILL

Shiner SE/S



72.52



12.5'

S. R. 358

Pavt

88.13



Shiner NW/S

96.62



P.K. Nail NW/S

Note: DID NOT RE-DIG
stone AS IT IS OFF PAVT
SURFACE.
The ties ARE FROM
Fremont crew on
5-8-81 + 65° survey
for stone 9 1/2" below
surface

± 748' From LAST Point or 21+17 ±

✓ Check all points - 8/9/71

Get Odometer distance or Aprox distance between Points.

SHEET NO. 1 of 1

| PERSONNEL | TITLE | PERSONNEL | TITLE | COUNTY | DATE |
|-----------|-------|-----------|-------|------------------------------------|-------------|
| Schneider | | | | Ottawa | 6-16-71 |
| Mosser | | | | S. R. 358 | WEATHER Hot |
| Barbour | | | | SEC. 33 | TEMP. 85° |
| Geyman | | | | DESCRIPTION S.R. # 163 To S.R. # 2 | JOB NO. |

