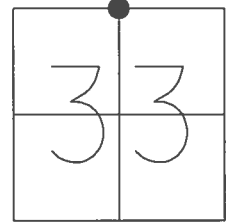


O.D.O.T. DISTRICT 2 SURVEY OFFICE (USE ONLY)

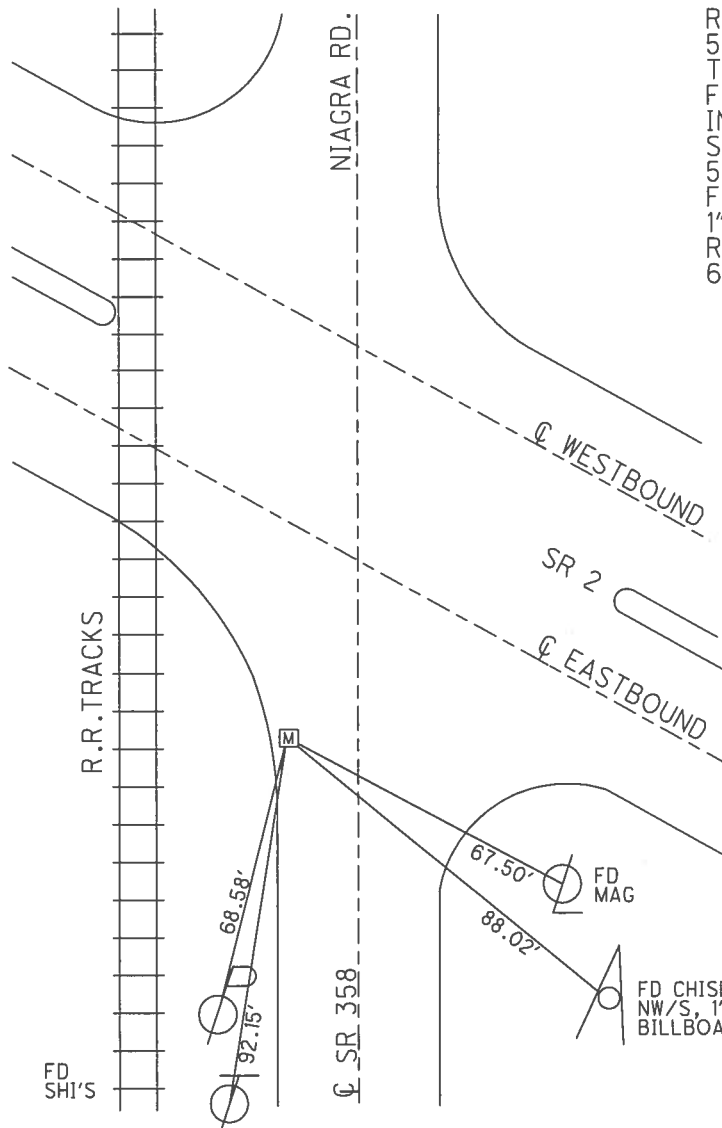
PERSONNEL \_\_\_\_\_ REFERENCE NO. 3 SHEET 3 OF 3

NOTES RHOADES DATE 6/16/16 ROUTE SR 358  
 H.C. O'DONNELL WEATHER CLOUDY COUNTY OTTAWA  
 R.C. KEFFER TEMP. 82° TOWNSHIP ERIE  
 \_\_\_\_\_ SECTION 33  
 \_\_\_\_\_ T 7 N R 16 E

TYPE MONUMENT MONBOX  
 ON SURFACE - ~~BELOW~~ ON \_\_\_\_\_  
 LEFT - ☉ PAV'T - RIGHT 13", 71" S. OF SR 2  
0.9' TO LT EDGE PAVEMENT  
 S.L.M. 47+30  
 GRID: NORTHING: 679390.524 EASTING: 1826070.610



RECORD:  
 5" X 7" X 6"  
 TRIANGULAR STONE  
 FD 1" SQ. IPIN  
 IN MONBOX OVER  
 STONE  
 5/19/05, RGN  
 FD MONBOX W/  
 1" SQ. IPIN  
 REF3  
 6/16/16, JFO



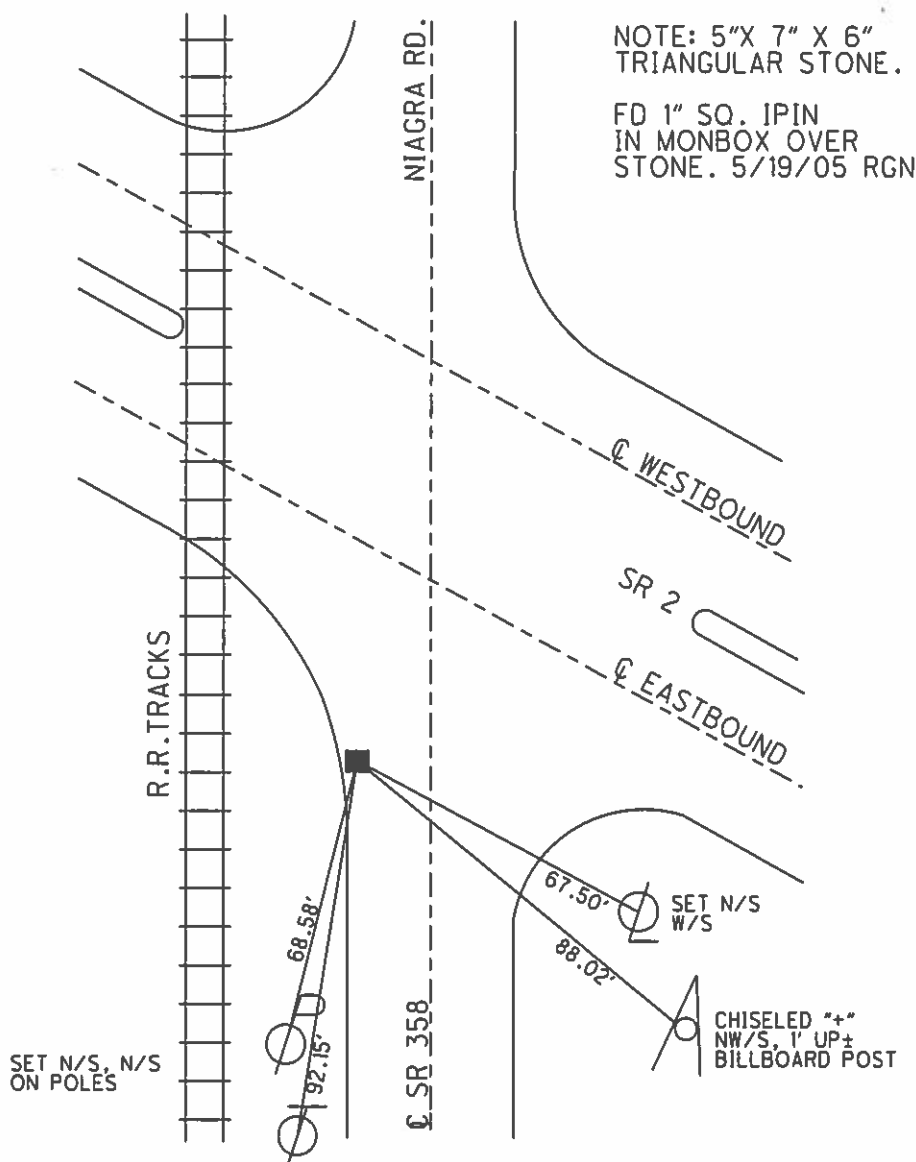
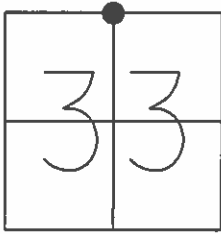
FD CHISELED "+"  
 NW/S, 1' UP±  
 BILLBOARD POST

O.D.O.T. DISTRICT 2 SURVEY OFFICE

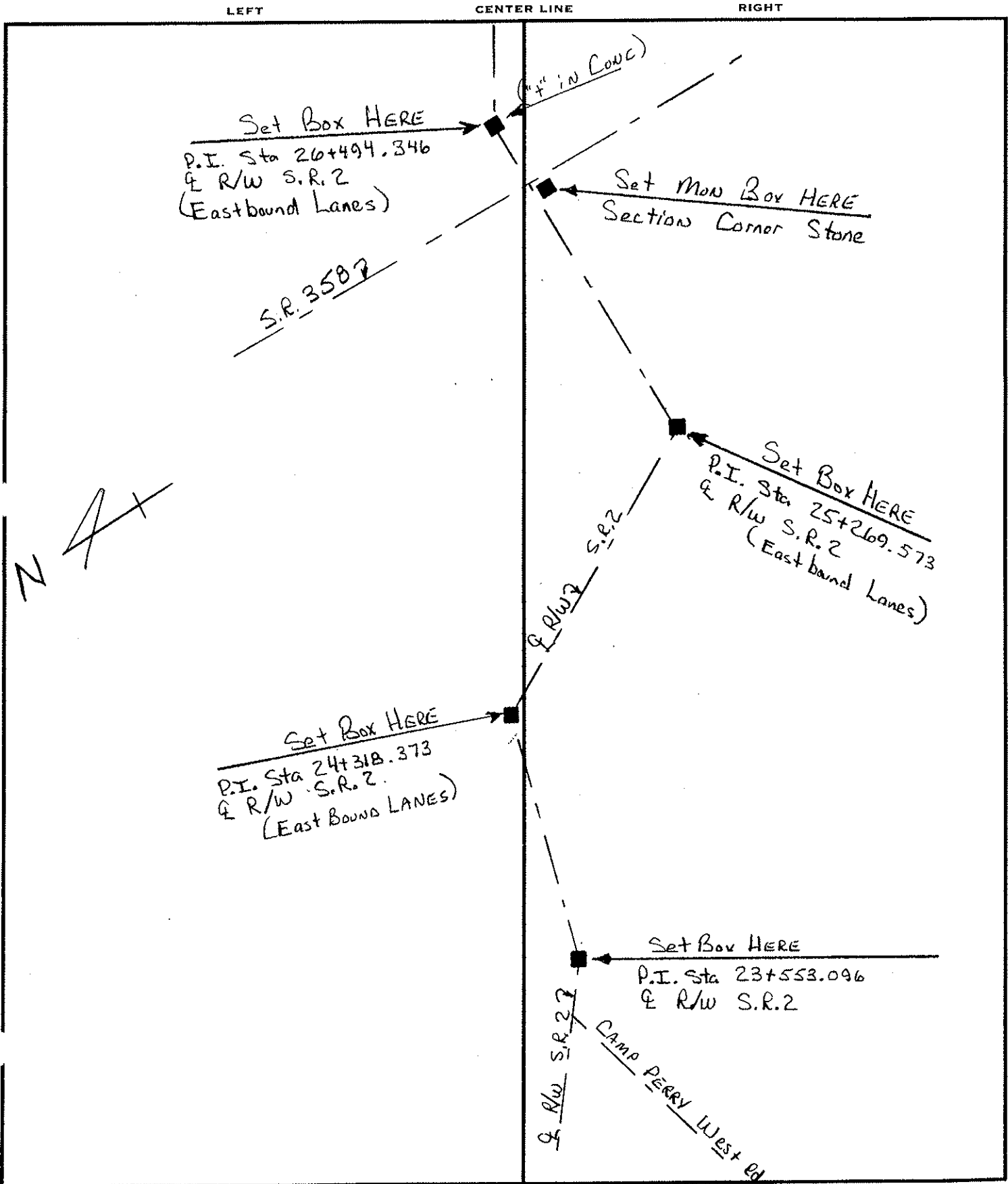
PERSONNEL \_\_\_\_\_ REFERENCE NO. 3 SHEET 2 OF 2  
 NOTES R.NUHFER DATE 5/19/05 ROUTE SR 358  
 H.C. D.HOMAN WEATHER CLOUDY COUNTY OTTAWA  
 R.C. J.HERALD TEMP. 62° TOWNSHIP ERIE  
 \_\_\_\_\_ SECTION 33  
 \_\_\_\_\_ T 7 N R 16 E

TYPE MONUMENT 1" IPIN IN MONBOX OVER STONE  
 ON SURFACE - ~~BELOW~~ ON \_\_\_\_\_  
 LEFT - C PAV'T - RIGHT 71'±S.OF SR 2, 13" LT SR 358  
0.9' TO LT EDGE PAVEMENT  
 S.L.M. 47+30

GRID: NORTHING: 679390.567 EASTING: 1826070.577



PERSONNEL	TITLE	PERSONNEL	TITLE	COUNTY	DATE
CRAIG LOEHRKE				OTT	10-8-99
TJ ROUSOS				S.R. S.R.2	WEATHER Cloudy
				SEC. 23.240	TEMP +62°
DESCRIPTION Placement of New Boxes				JOB NO.	420120



O.D.O.T. DISTRICT 2 SURVEY OFFICE

PERSONNEL \_\_\_\_\_

REFERENCE NO. 3

SHEET \_\_\_\_\_ OF \_\_\_\_\_

NOTES Rousos

H.C. Rousos

R.C. \_\_\_\_\_

DATE 8-13-99

WEATHER Cloudy

TEMP. 75°

ROUTE SR 12

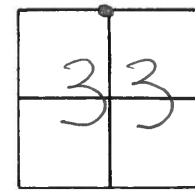
COUNTY OTT

TOWNSHIP ERIE

SECTION 33

T7 N R16 E

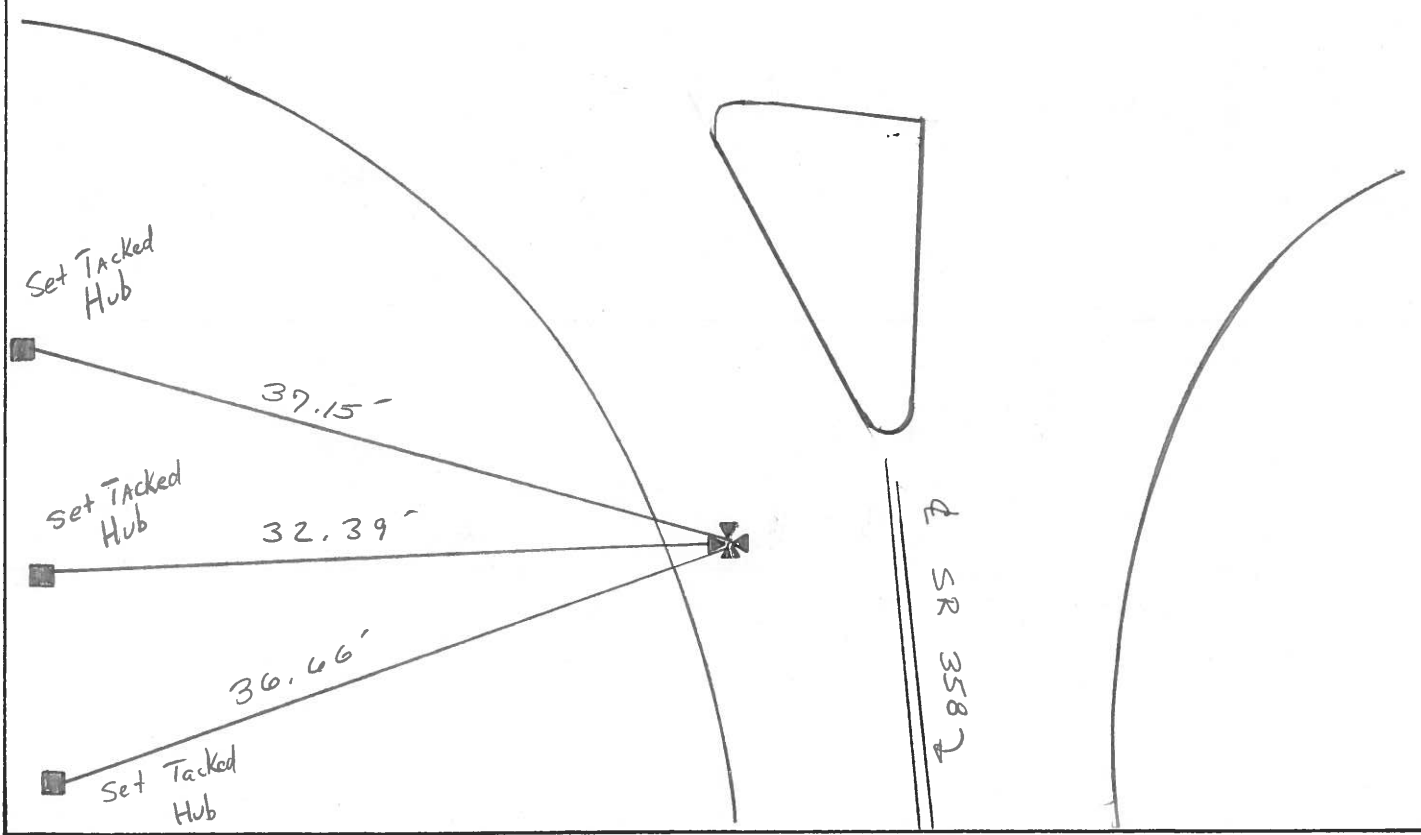
TYPE MONUMENT STONE  
 ON SURFACE - BELOW 23" Below top of Pmnt.  
~~LEFT~~ & PAV'T. - RIGHT 71'± SR 2 / 12.5' Lt SR 358  
1.5 TO Lt EDGE PAVEMENT  
 S.L.M. \_\_\_\_\_



TRIANGULAR stone  
 5" x 7" x 6"



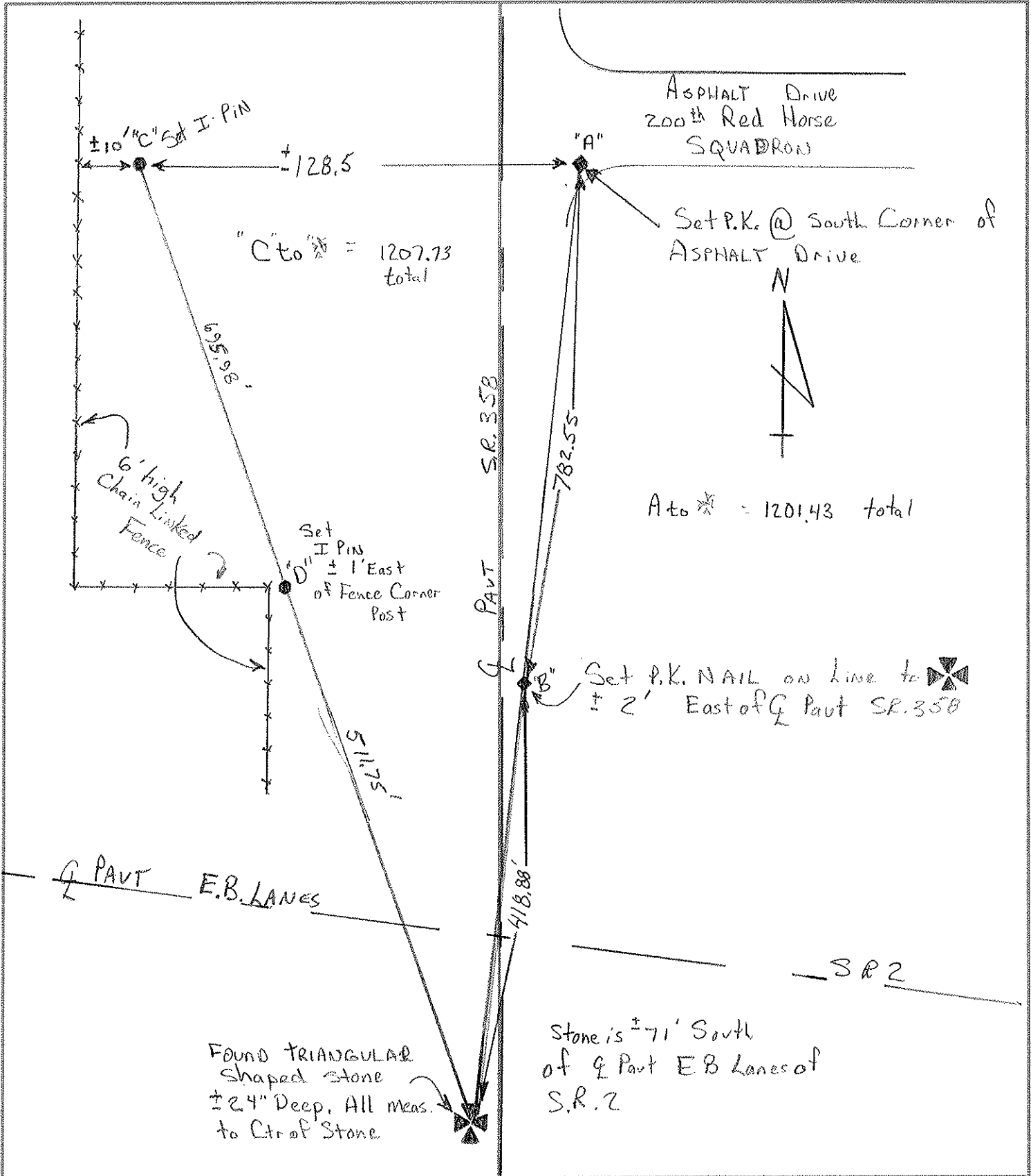
Eastbound LANES      SR 2



PERSONNEL	TITLE	PERSONNEL	TITLE	COUNTY	DATE	WEATHER	TEMP.
C. LOENKE	☉ ID			OTT	8-13-99	Cloudy	+76°
T. ROSSOS	✕			S.R. 2			
				SEC. 23.461			

DESCRIPTION TRANSIT TIES - North 1/4 Section 33 Erie Twp JOB NO. \_\_\_\_\_

LEFT CENTER LINE RIGHT



O.D.O.T. DISTRICT 2 SURVEY OFFICE

PERSONNEL

REFERENCE NO. 3

SHEET      OF     

NOTES CORDS

H.C. CORDS

R.C. LOENZKE

DATE 12/8/98

WEATHER cloudy

TEMP. 45°

ROUTE SR 358

COUNTY OTTAWA

TOWNSHIP 62R/C

SECTION 33

T      R     

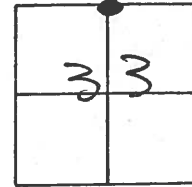
TYPE MONUMENT PK & WASHER

ON SURFACE - ~~NO~~ YES

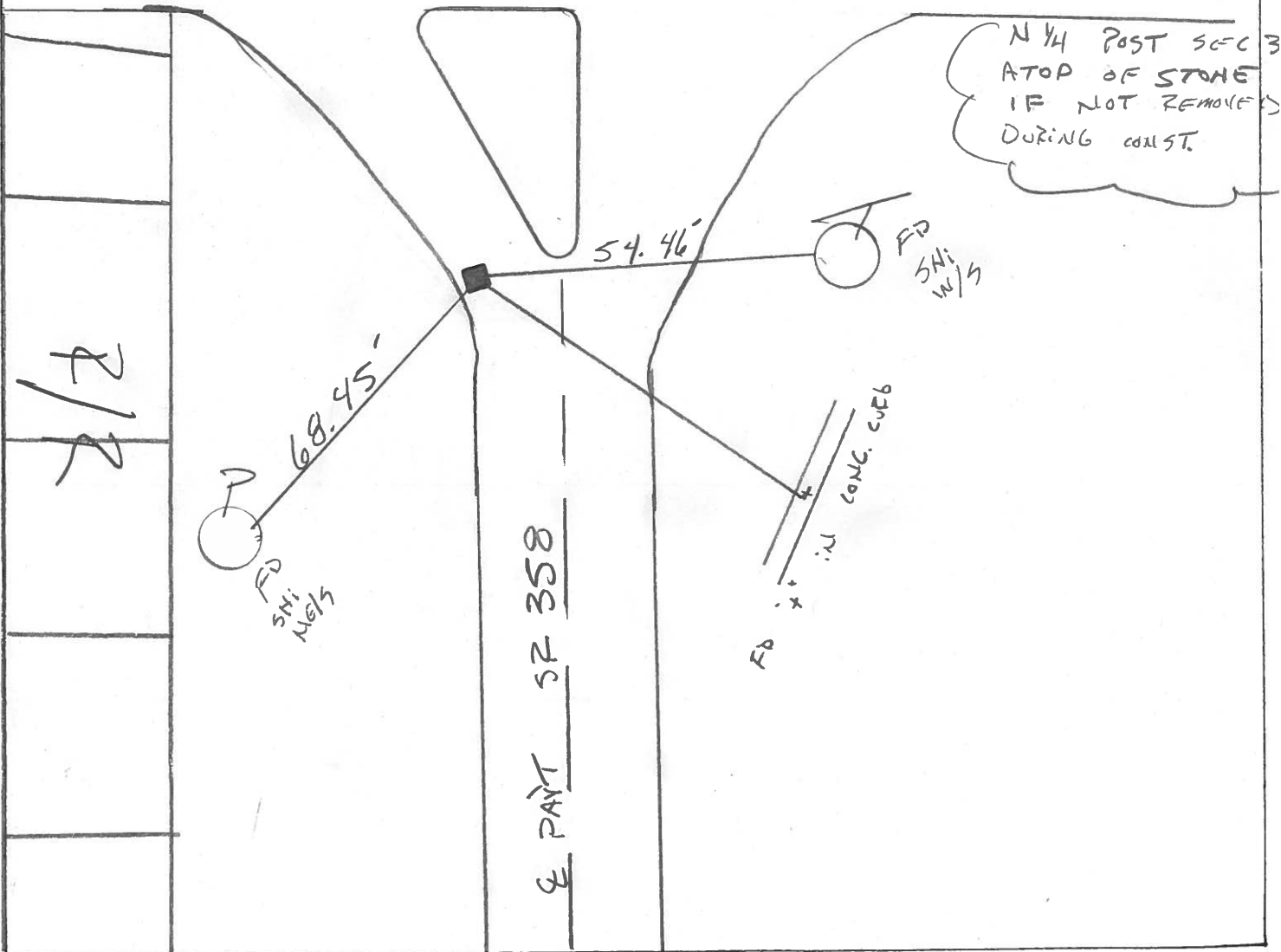
LEFT- & PAV'T. - RIGHT     

     TO      EDGE PAVEMENT

S.L.M.     



E. BOUND SR 2



# O.D.O.T. DISTRICT 2 SURVEY OFFICE

PERSONNEL \_\_\_\_\_

REFERENCE NO. \_\_\_\_\_

SHEET \_\_\_\_\_ OF \_\_\_\_\_

NOTES LOEHRKE

H.C. CARDEN

DATE 12-8-98

ROUTE SR 358

R.C. LOEHRKE

WEATHER Cloudy

COUNTY OTT.

TEMP. +40

TOWNSHIP ERIE

SECTION 28

T. --- R. ---

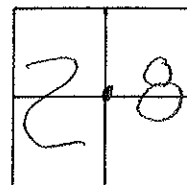
TYPE MONUMENT 2 Lg RR Spikes

ON SURFACE - BELOW \_\_\_\_\_

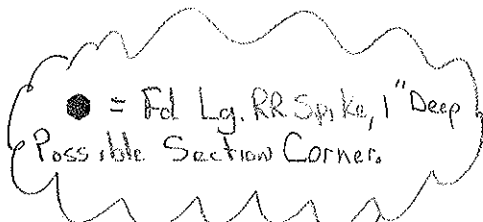
LEFT - & PAV'T. - RIGHT \_\_\_\_\_

\_\_\_\_\_ TO \_\_\_\_\_ EDGE PAVEMENT

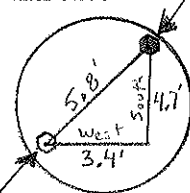
S.L.M. \_\_\_\_\_



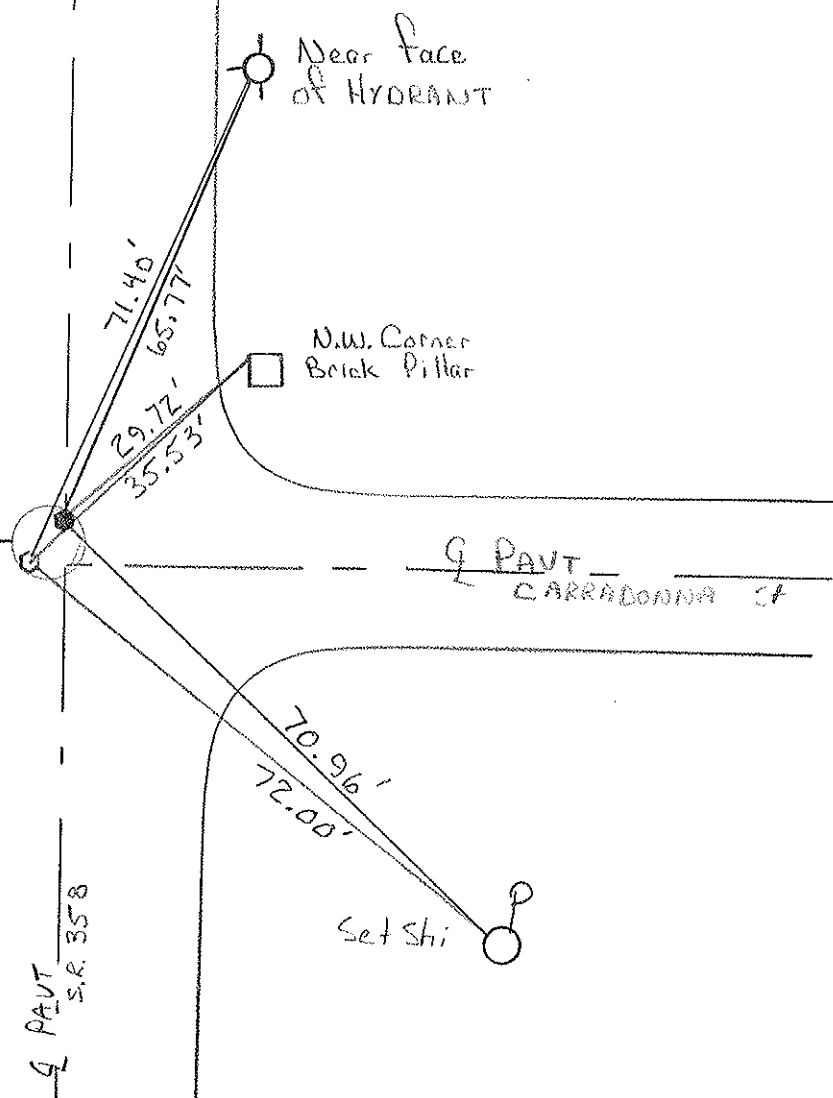
1/2 mile North of  
Junction S.R. 2 &  
SR 358



Detail



○ = Lg R.R. SPIKE We used  
for this Project. This SPIKE  
is ± 3.4' west of & 4.7' South  
of other SPIKE



✓ Check all points - 8/9/71

Get Odometer distance or Aprox distance between Points

SHEET NO. 1 of 1

PERSONNEL	TITLE	PERSONNEL	TITLE
<u>Schneider</u>			
<u>Mosser</u>			
<u>Barbour</u>			
<u>Geyman</u>			

COUNTY Ottawa DATE 6-16-71  
 S. R. 358 WEATHER Hot  
 SEC. 33 TEMP. 85°

DESCRIPTION S.R.# 163 To S.R.# 2 JOB NO. \_\_\_\_\_

