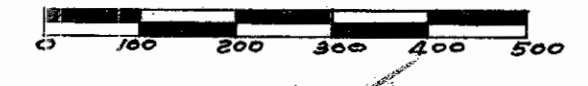
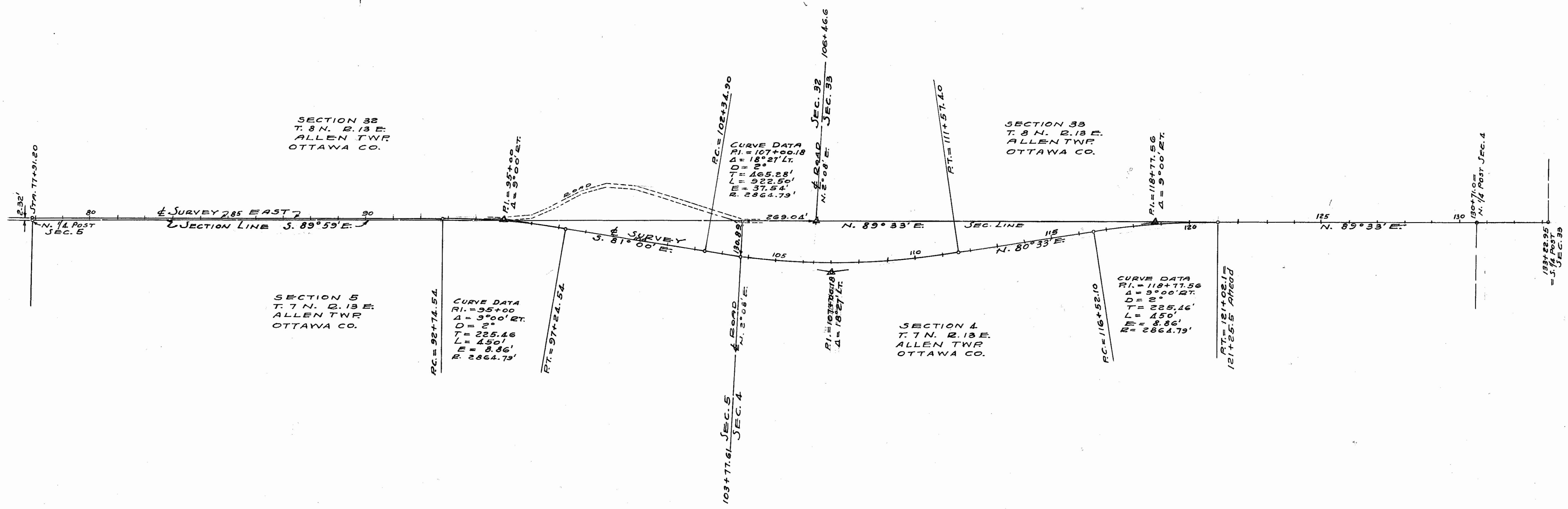


LOCATION PLAN -OTT 579-1.70- WILLISTON ROAD DEPARTMENT OF HIGHWAYS STATE OF OHIO 1951

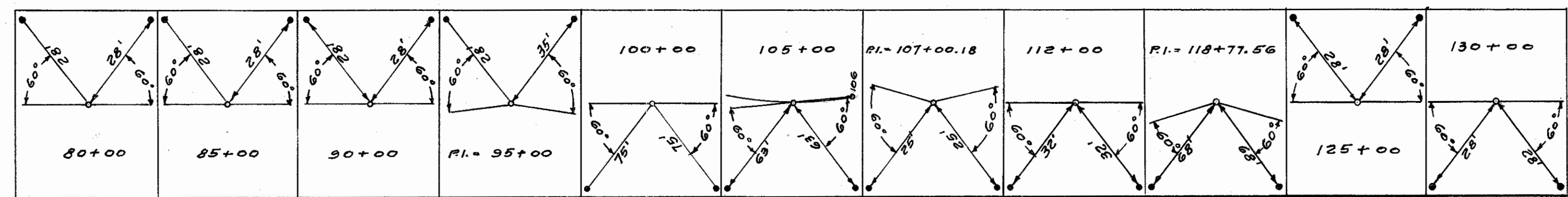


Packet Holder

I hereby certify this to be a true and correct platting of the center line of survey as determined by the Ohio Department of Highways.
DATE: 12-6-51
George H. Fisher
Division Deputy Director



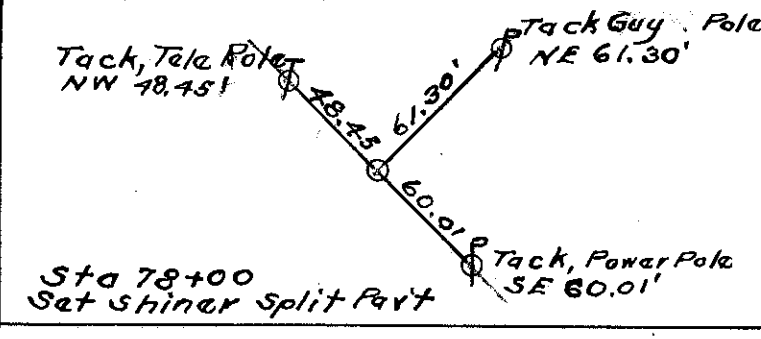
CENTERLINE REFERENCE MONUMENTS WILL BE SET BEFORE OR AFTER CONSTRUCTION



Scanned July 1987

R4579 #1 E-53

UTILITIES
Power Poles: The Toledo Edison Co., Toledo, Ohio
Telephone Poles: Northern Ohio Telephone Co., Bellevue, Ohio



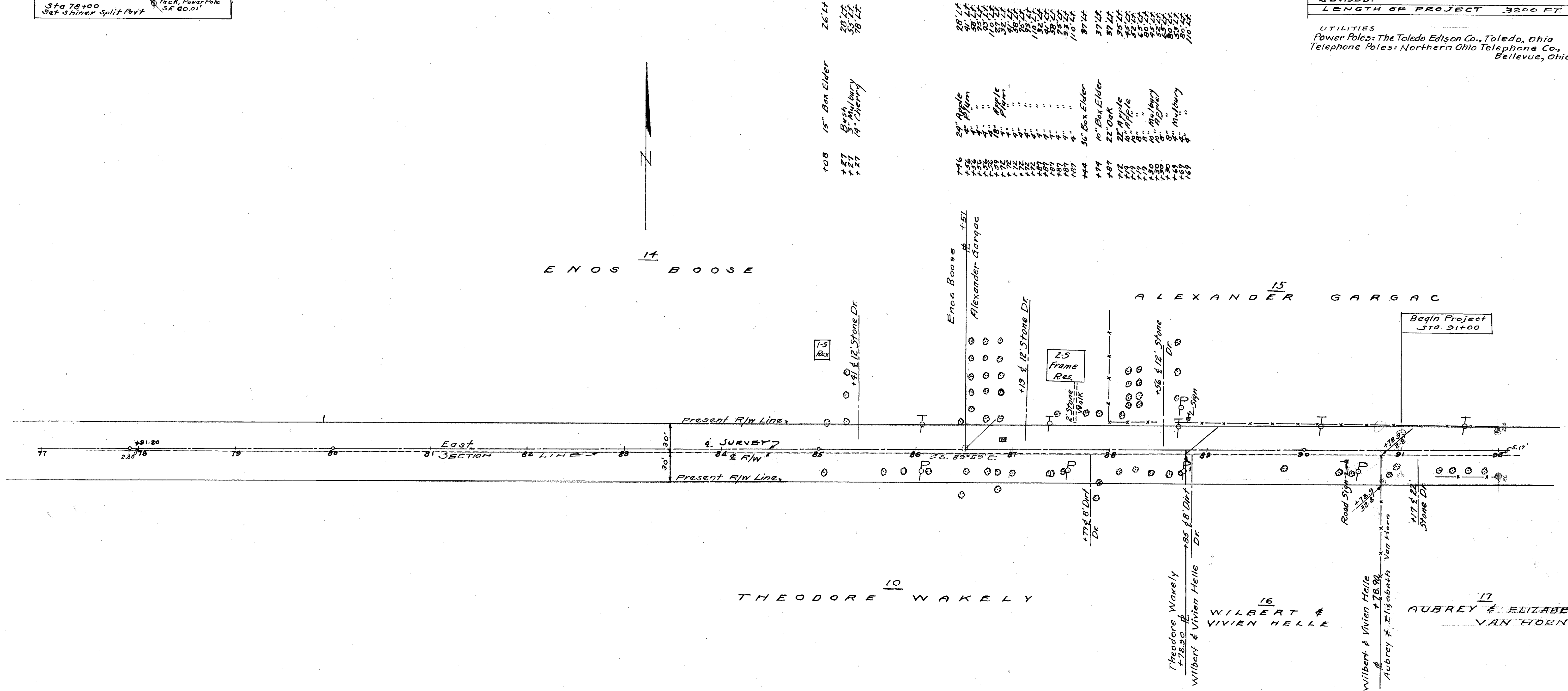
ENOS BOOSE

ALEXANDER GARGAC

THEODORE WAKELY

WILBERT & VIVIEN HELLE

AUBREY & ELIZABETH VAN HORN



- 26 Lt
- 27 Lt
- 28 Lt
- 29 Lt
- 30 Lt
- 31 Lt
- 32 Lt
- 33 Lt
- 34 Lt
- 35 Lt
- 36 Lt
- 37 Lt
- 38 Lt
- 39 Lt
- 40 Lt
- 41 Lt
- 42 Lt
- 43 Lt
- 44 Lt
- 45 Lt
- 46 Lt
- 47 Lt
- 48 Lt
- 49 Lt
- 50 Lt
- 51 Lt
- 52 Lt
- 53 Lt
- 54 Lt
- 55 Lt
- 56 Lt
- 57 Lt
- 58 Lt
- 59 Lt
- 60 Lt
- 61 Lt
- 62 Lt
- 63 Lt
- 64 Lt
- 65 Lt
- 66 Lt
- 67 Lt
- 68 Lt
- 69 Lt
- 70 Lt
- 71 Lt
- 72 Lt
- 73 Lt
- 74 Lt
- 75 Lt
- 76 Lt
- 77 Lt
- 78 Lt
- 79 Lt
- 80 Lt
- 81 Lt
- 82 Lt
- 83 Lt
- 84 Lt
- 85 Lt
- 86 Lt
- 87 Lt
- 88 Lt
- 89 Lt
- 90 Lt
- 91 Lt
- 92 Lt

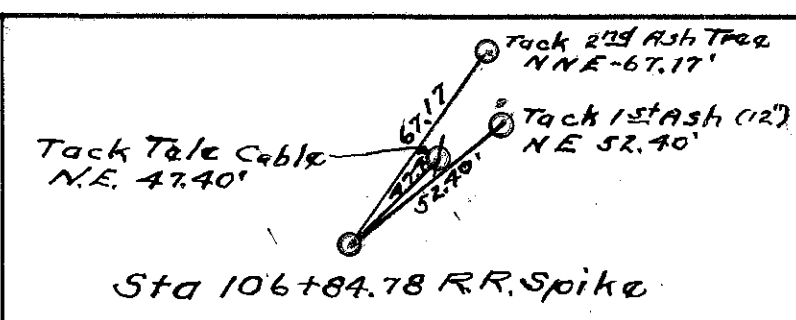
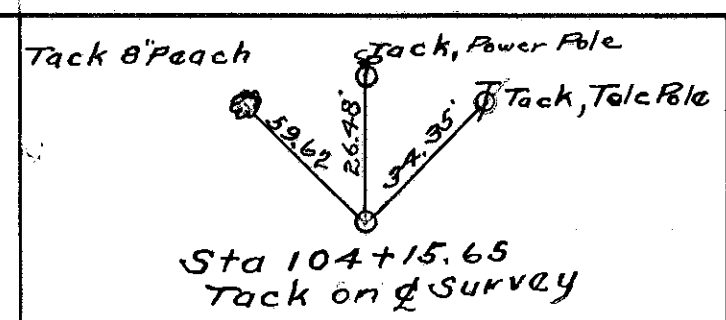
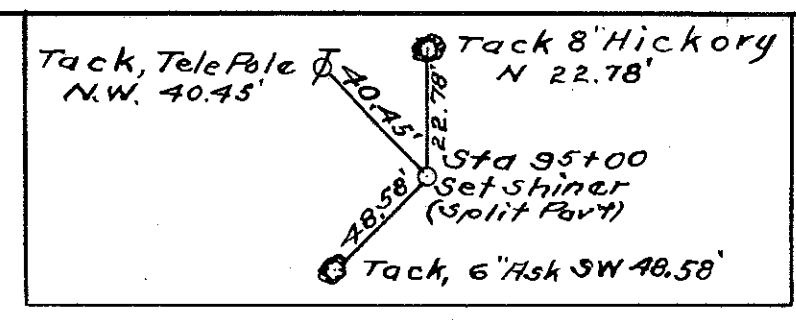
- +105 6" Pine 24' Rt
- +166 11" Elm 22' Rt
- +187 6" Elm 22' Rt
- +112 6" Elm 22' Rt
- +145 4" Pine 46' Rt
- +150 7" Elm 22' Rt
- +172 9" Elm 22' Rt
- +183 5" Elm 22' Rt
- +183 4" Pine 40' Rt
- +198 10" Elm 22' Rt
- +136 14" Elm 22' Rt
- +138 10" Pear 22' Rt
- +151 14" Elm 22' Rt
- +183 10" Elm 50' Rt
- +187 6" Hickory 32' Rt
- +109 7" Elm 23' Rt
- +26 12" " 20' Rt
- +42 6" Elm 20' Rt
- +59 7" " 23' Rt
- +75 9" " 23' Rt
- +179 7" Box Elder 19' Rt
- +135 8" Elm 23' Rt
- +147 8" Elm 23' Rt
- +187 2-1/2" Elms 25' Rt
- +194 10" Ash 18' Rt
- +139 8" Ash 20' Rt
- +153 8" " 20' Rt
- +168 7" " 20' Rt
- +185 7" Ash 21' Rt

FOR ANY QUESTIONS PLEASE CONTACT ODOT DISTRICT 2 REAL ESTATE AT 419-353-8131

Signed July 1957

50' x 100' July 1947

FOR ANY QUESTIONS PLEASE CONTACT ODOT 2 REAL DISTRICT 419-353-8131



OTTAWA COUNTY
OTT 519-1.70
R/W PLANS

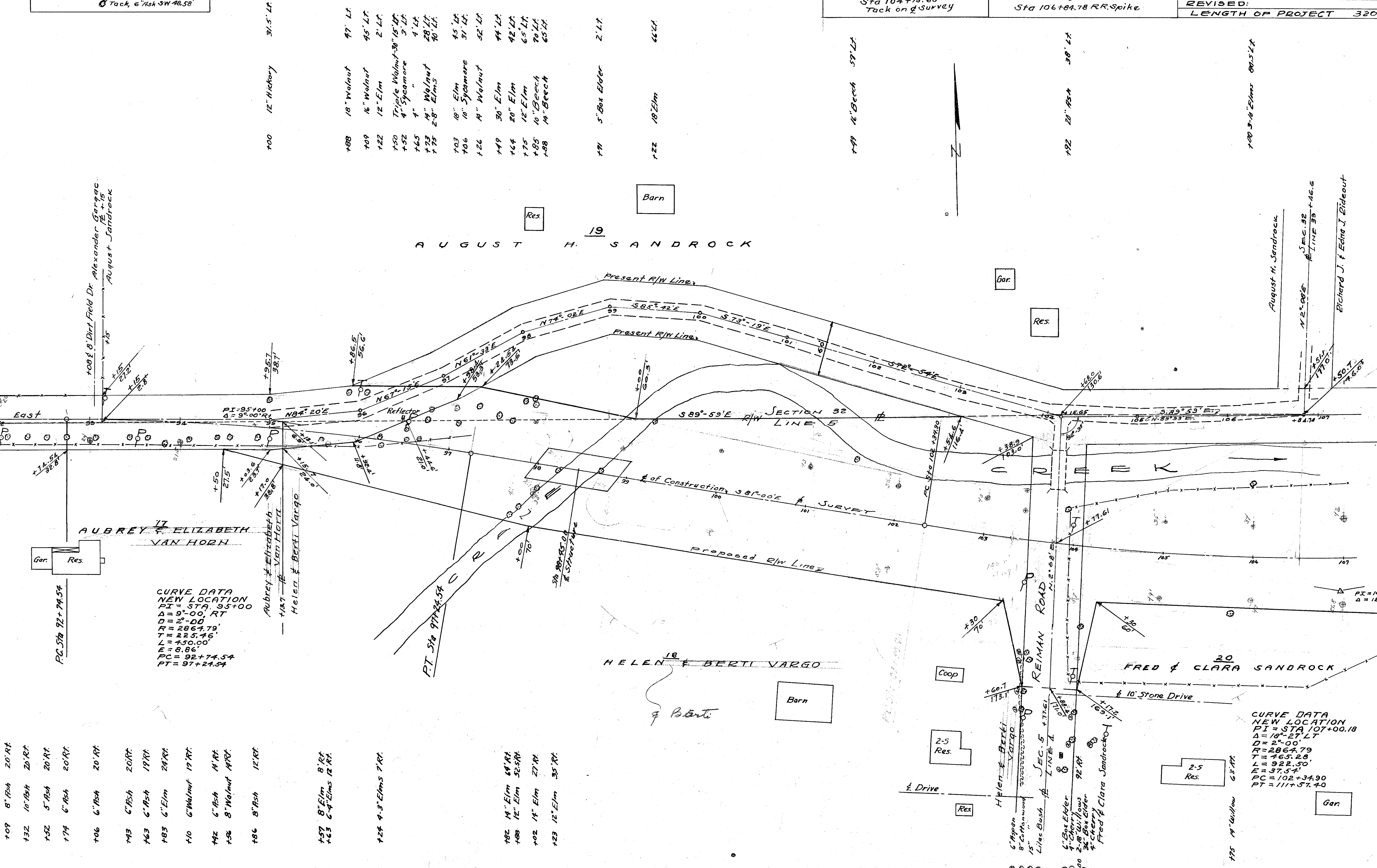
DATE: 12-7-51 DRAWN BY J.S.F.R.P.
REVISID:
LENGTH OF PROJECT 3200 FT.

2
4

SEC. 32 ALLEN TWP T. 8 N. R. 13 E.

SEC. 5 ALLEN TWP T. 7 N. R. 13 E.

SEC. 4



- 109 8" Ash 20' RT.
- 132 10" Ash 20' RT.
- 152 5" Ash 20' RT.
- 174 6" Ash 20' RT.
- 106 6" Ash 20' RT.
- 143 6" Ash 20' RT.
- 163 6" Ash 19' RT.
- 183 6" Elm 24' RT.
- 110 6" Walnut 19' RT.
- 142 6" Ash 14' RT.
- 156 8" Walnut 14' RT.
- 186 8" Ash 12' RT.
- 157 8" Elm 8' RT.
- 163 6" Elms 12' RT.
- 124 4" 3" Elms 7' RT.
- 182 14" Elm 64' RT.
- 188 12" Elm 52' RT.
- 102 14" Elm 27' RT.
- 123 12" Elm 35' RT.

CURVE DATA
NEW LOCATION
PI = STA 95+00
Δ = 9° 00' RT
D = 2° 00' RT
R = 2864.79'
T = 225.46'
L = 150.00'
E = 6.86'
PC = 92+74.54
PT = 97+24.54

CURVE DATA
NEW LOCATION
PI = STA 107+00.18
Δ = 18° 27' LT
D = 2° 00'
R = 2864.79'
T = 465.28'
L = 92.54'
PC = 102+34.90
PT = 111+57.40

- 100 12" Hickory 31.5' LT.
- 188 18" Walnut 47' LT.
- 109 16" Walnut 45' LT.
- 122 12" Elm 2' LT.
- 150 Triple Walnut 30" 15' LT.
- 152 4" Sycamore 4' LT.
- 165 4" " 4' LT.
- 175 4" Walnut 28' LT.
- 175 2" 8" Elms 40' LT.
- 103 18" Elm 45' LT.
- 106 10" Sycamore 51' LT.
- 126 4" Walnut 52' LT.
- 149 30" Elm 44' LT.
- 144 20" Elm 42' LT.
- 175 12" Elm 65' LT.
- 185 10" Beech 70' LT.
- 188 14" Beech 65' LT.
- 171 5" Box Elder 2' LT.
- 122 18" Elm 66' LT.
- 199 16" Beech 59' LT.
- 192 20" Ash 38' LT.
- 100 3" 10" Elms 80.5' LT.

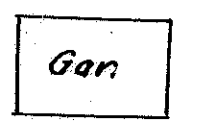
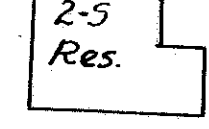
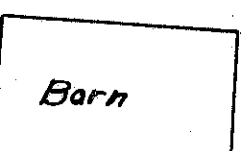
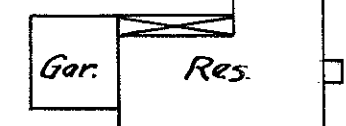
AUGUST H. SANDROCK

HELEN & BERTI VARGO

FRED & CLARA SANDROCK

August H. Sandrock
Richard J. & Edna J. Dideout

AUBREY & ELIZABETH VAN HORN



Scanned
July 1977

SEC. 33 ALLEN TWP. T. 8 N. R. 13 E.

OTTAWA COUNTY
OTT 579-1.70
R/W PLANS

3
4

DATE: 12-7-51 DRAWN BY J.S.F.R.P.
REVISID:
LENGTH OF PROJECT 3200 FT.

+30 14" Stump 9' Lt.
+16 40" Stump 89' Lt.

+49 16" Sycamore 29' Lt.
+87 14" Stump 53' Lt.
+96 14" Hickory 102' Lt.

+63 10" Twin Stump 26.5' Lt.
+65 18" Hickory 79' Lt.
+28 14" Stump 12.5' Lt.

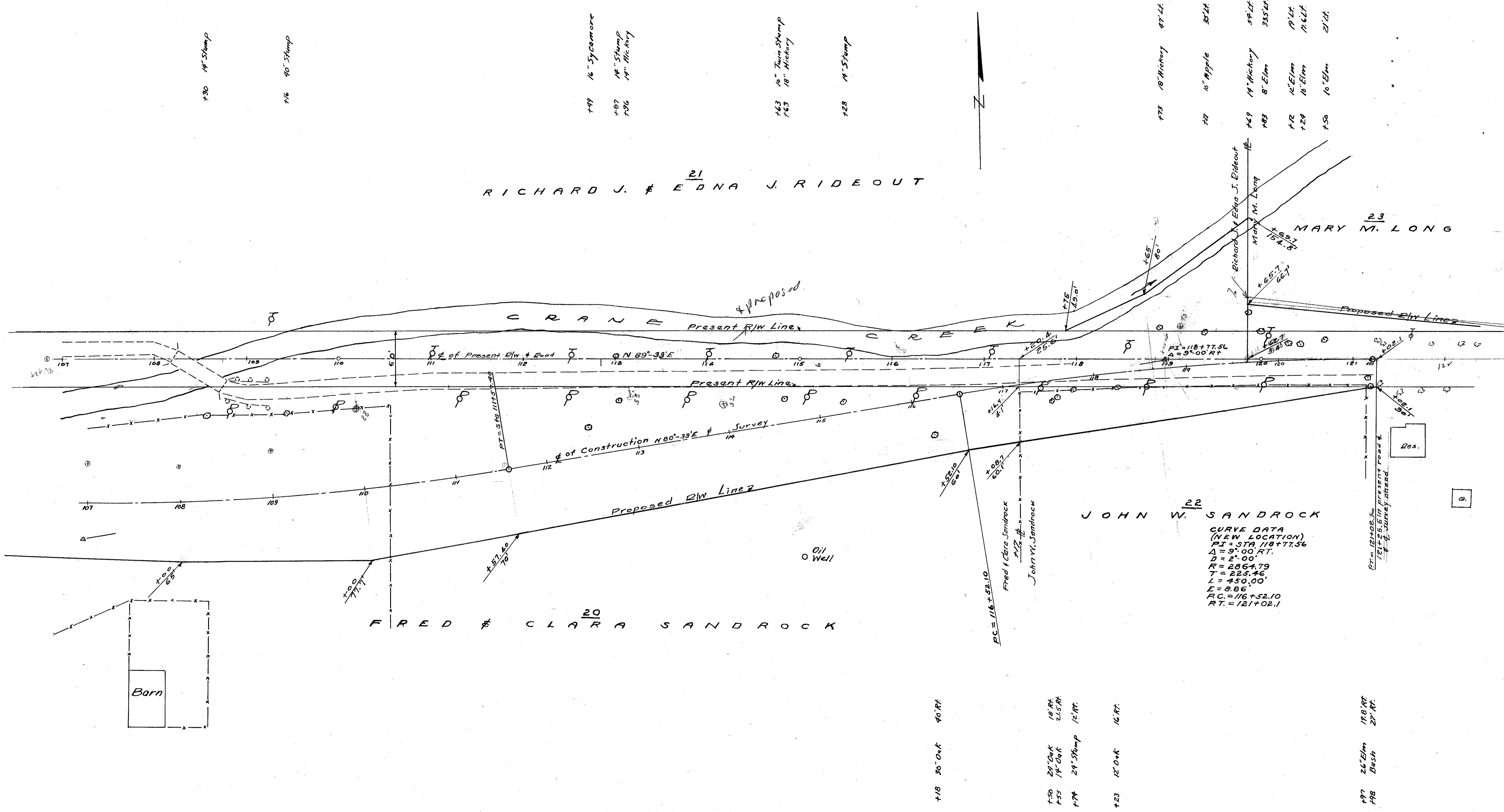
+73 18" Hickory 47' Lt.
+74 16" Apple 50' Lt.
+49 14" Hickory 54' Lt.
+85 8" Elm 33.5' Lt.
+12 12" Elm 19' Lt.
+29 16" Elm 76.6' Lt.
+50 16" Elm 21' Lt.

RICHARD J. & EDNA J. ²¹ RIDEOUT

MARY M. ²³ LONG

JOHN W. ²² SANDROCK

FRED & CLARA ²⁰ SANDROCK



+18 30" Oak 40' Rt.
+50 20" Oak 14' Rt.
+53 14" Oak 21.5' Rt.
+74 24" Stump 12' Rt.
+23 12" Oak 16' Rt.

+97 26" Elm 18.8' Rt.
+98 Bush 27' Rt.

SEC. 4 ALLEN TWP. T. 7 N. R. 13 E.

OTTAWA COUNTY
 OTT 519-1.70
R/W PLANS

DATE: 12-7-51 DRAWN BY J.S. F.R.P.
 REVISED:
 LENGTH OF PROJECT 3200 FT.

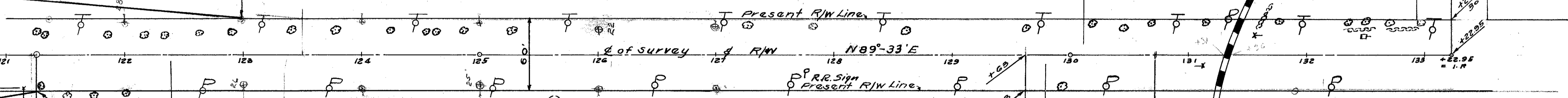


- +26 10" Elm 17.5' Lt
- +31 10" Elm 17.5' Lt
- +89 12" Elm 17.5' Lt
- +15 10" Walnut 16.5' Lt
- +31 13" Elm 16.5' Lt
- +41 8" Hickory 19' Lt
- +89 10" Butternut 19' Lt
- +39 15" Hickory 21.5' Lt
- +76 15" Walnut 22' Lt
- +22 8" Hickory 22' Lt
- +59 10" Elm 20' Lt
- +60 10" Elm 19' Lt
- +85 12" Elm 19' Lt
- +25 15" Elm 19' Lt
- +26 8" Butternut 22' Lt
- +80 20" Sycamore 25' Lt
- +60 30" Butternut 22' Lt
- +63 9" Cherry 22.5' Lt
- +18 20" Maple 27' Lt
- +45 14" Twin Elm 29' Lt
- +83 15" Elm 28' Lt
- +13 48" Elm 29' Lt
- +28 15" Butternut 27' Lt
- +36 15" Catalpa 27' Lt
- +52 7" Catalpa 27' Lt
- +71 6" Catalpa 27' Lt
- +97 14" Elm 25' Lt



MARY M. LONG

End of Project
Sta. 123+00



2-5 Res.

Gar.

Barn
Shed

Wooden
Oil
Tanks

2-5 Res.

Gar.

2-5 Res.

JOHN W SANDROCK

John W. Sandrock
#

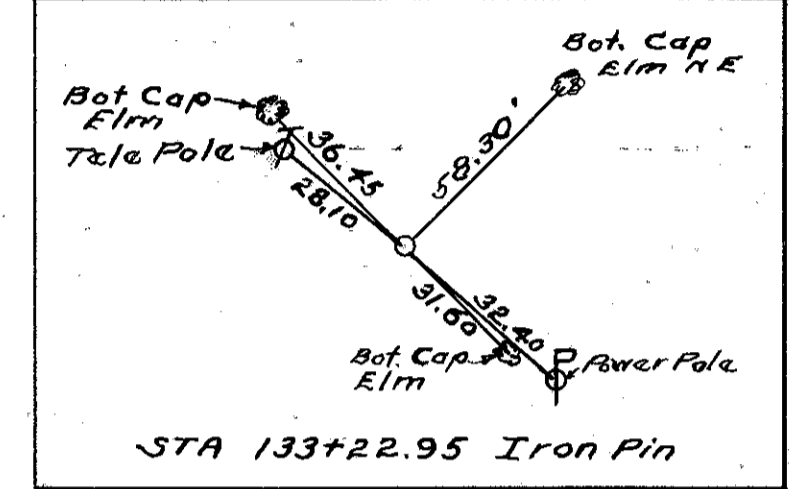
MARK &
GLADYS O. ANNIS

Mary M. Long
Half Section Line

Sta 121+00 to 121+25.5' Ahead

- +28 11" Oak 26.5' Rt
- +51 15" Catalpa 33.5' Rt
- +71 12" Catalpa 33.5' Rt
- +00 13" Walnut 31' Rt

- +95 8" Elm 25' Rt



OTT-213-170

E-23