

O.D.O.T. DISTRICT 2 SURVEY OFFICE (USE ONLY)

PERSONNEL

REFERENCE NO. A

SHEET 1 OF 36

NOTES RHOADES

DATE 10/5/20

ROUTE SR 579

H.C. AUBLE

WEATHER SUNNY

COUNTY OTTAWA

R.C. O'DONNELL

TEMP. 44°

TOWNSHIP ALLEN

SECTION 6

DWG BY RHOADES

PID 95759

T 7 N R 13 E

TYPE MONUMENT MAG/WASHER

ON SURFACE - ~~BELOW~~ ON

OFFSET CL PAVEMENT 1.0' LT : RT

- TO - EDGE PAVEMENT

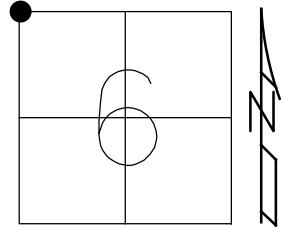
STATION: 0+00

HORZ.DATUM: NAD83 2011

GEOID: NAVD88 2012A

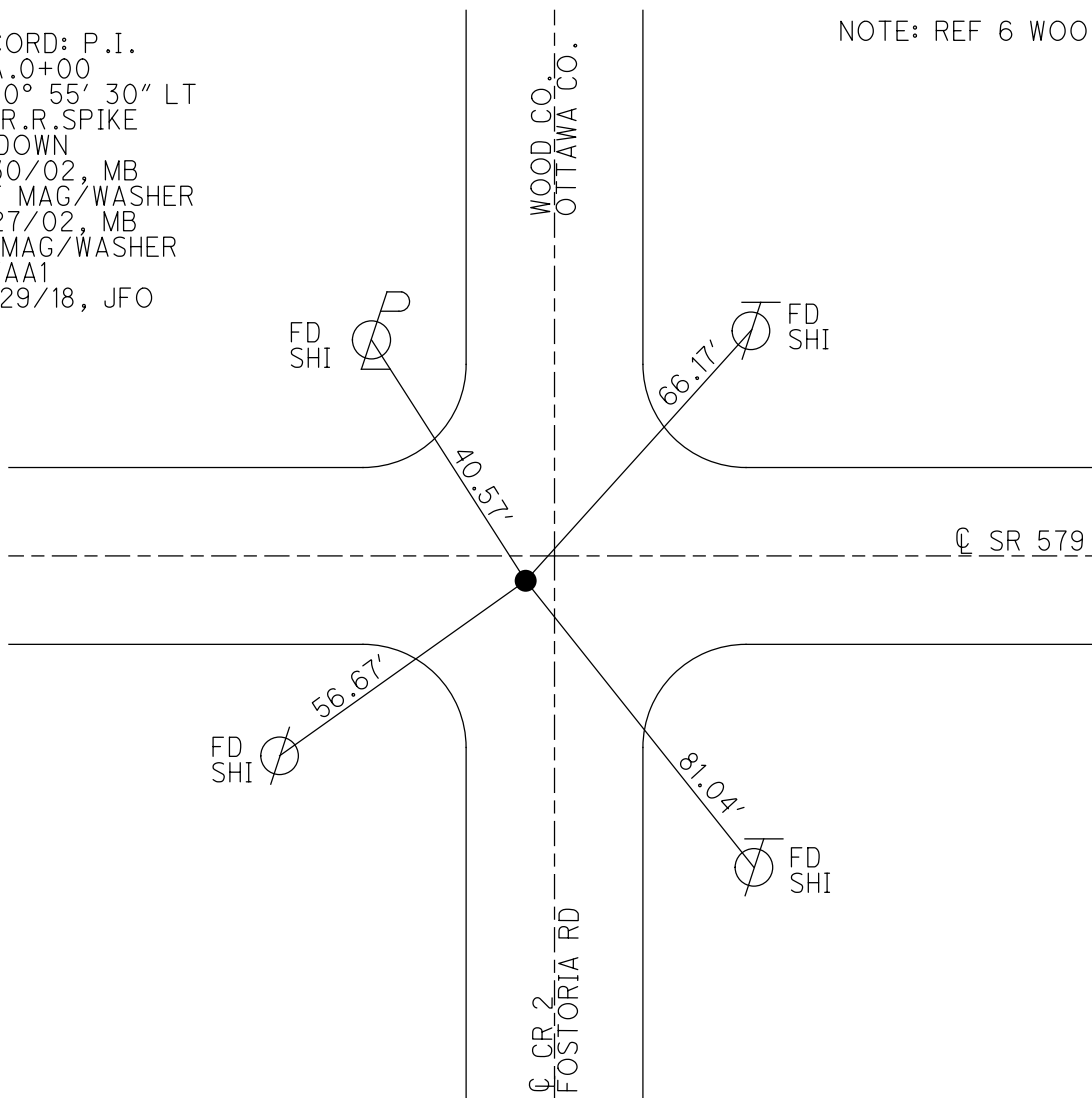
GRID: NORTHING: 706368.354

EASTING: 1718038.576



RECORD: P.I.
 STA.0+00
 $\Delta = 0^\circ 55' 30''$ LT
 FD R.R.SPIKE
 3" DOWN
 8/30/02, MB
 SET MAG/WASHER
 11/27/02, MB
 FD MAG/WASHER
 REFAA1
 10/29/18, JFO

NOTE: REF 6 WOO 579



O.D.O.T. DISTRICT 2 SURVEY OFFICE (USE ONLY)

PERSONNEL _____ REFERENCE NO. 1 SHEET 2 OF 36

NOTES RHOADES DATE 10/5/20 ROUTE SR 579
 H.C. AUBLE WEATHER SUNNY COUNTY OTTAWA
 R.C. O'DONNELL TEMP. 44° TOWNSHIP ALLEN
 SECTION 6

DWG BY RHOADES PID 95759 T 7 N R 13 E

TYPE MONUMENT P.K./WASHER

ON SURFACE - ~~BELOW~~ ON _____

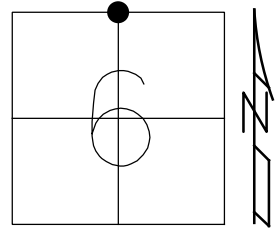
OFFSET ☐ PAVEMENT 0.5' ~~±~~ : RT

11.3' TO RT EDGE PAVEMENT

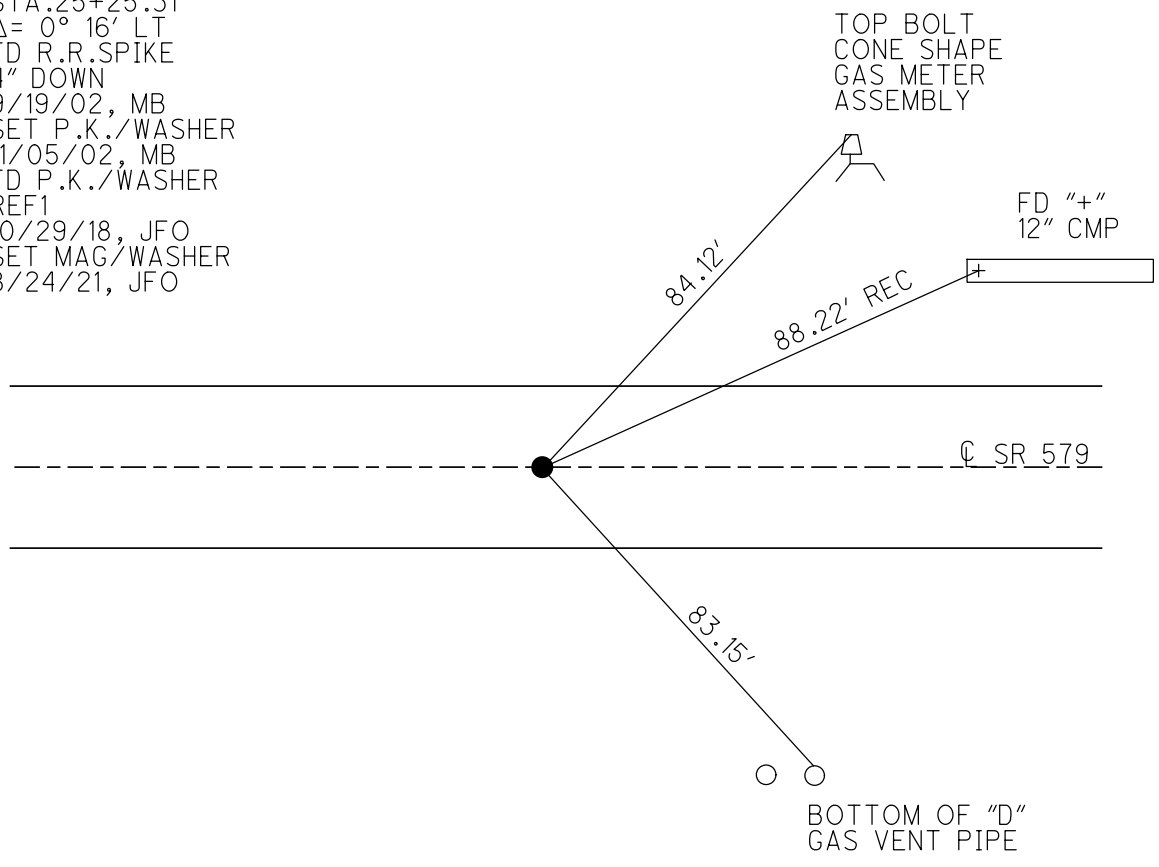
STATION: 25+31.18

HORZ.DATUM: NAD83 2011 GEOID: NAVD88 2012A

GRID: NORTHING: 706411.510 EASTING: 1720569.388



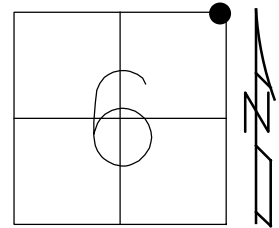
RECORD: P.I.
 STA. 25+25.31
 $\Delta = 0^\circ 16' \text{ LT}$
 FD R.R.SPIKE
 4" DOWN
 9/19/02, MB
 SET P.K./WASHER
 11/05/02, MB
 FD P.K./WASHER
 REF1
 10/29/18, JFO
 SET MAG/WASHER
 8/24/21, JFO



O.D.O.T. DISTRICT 2 SURVEY OFFICE (USE ONLY)

PERSONNEL _____ REFERENCE NO. 2 A SHEET 3 OF 36
 NOTES RHOADES DATE 10/5/20 ROUTE SR 579
 H.C. AUBLE WEATHER SUNNY COUNTY OTTAWA
 R.C. O'DONNELL TEMP. 44° TOWNSHIP ALLEN
 DWG BY RHOADES PID 95759 SECTION 6
 T 7 N R 13 E

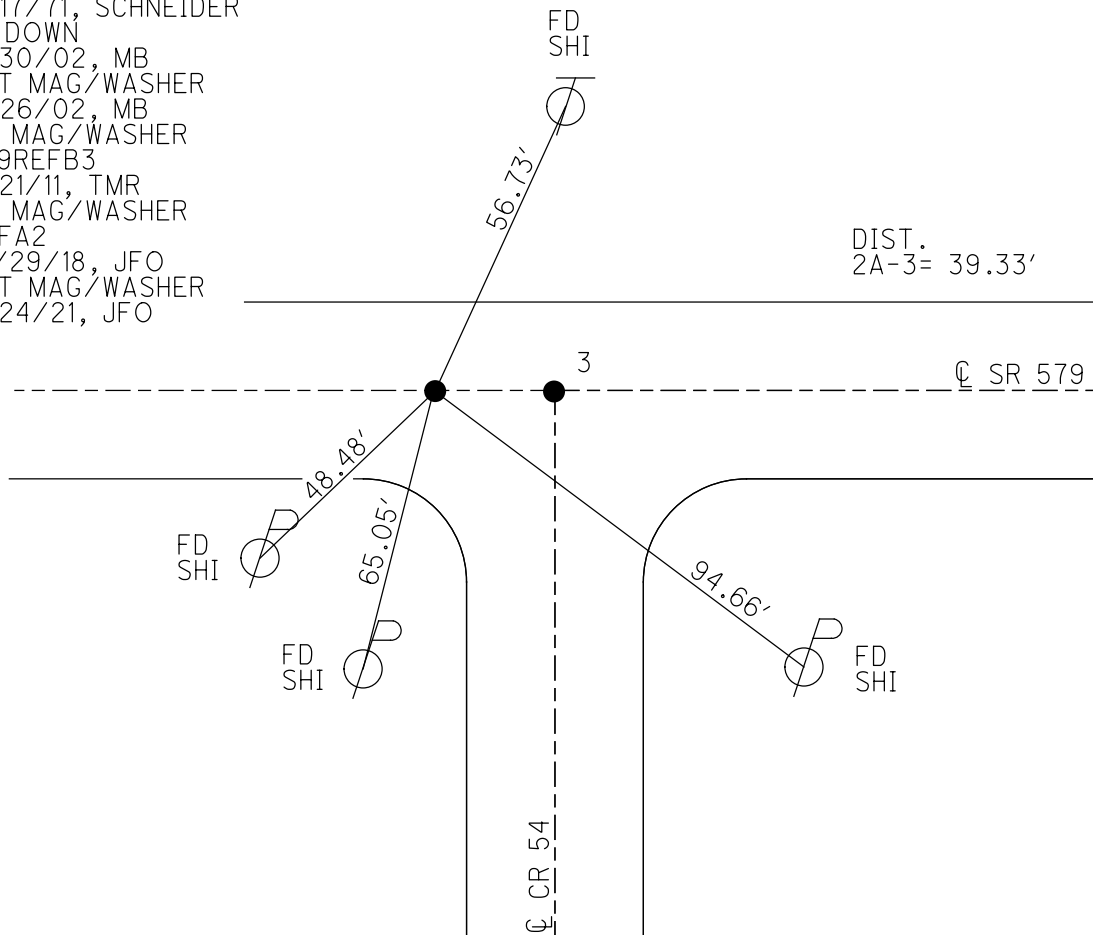
TYPE MONUMENT MAG/WASHER
 ON SURFACE - ~~BELOW~~ ON
 OFFSET ☉ PAVEMENT ON LT : RT
11.6' TO LT EDGE PAVEMENT
 STATION: 51+65.33



HORZ. DATUM: NAD83 2011 GEOID: NAVD88 2012A
 GRID: NORTHING: 706468.569 EASTING: 1723202.920

RECORD: P.I.
 STA. 51+65.4
 $\Delta = 0^{\circ}09' 20''$ RT
 FD R.R. SPIKE
 9/17/71, SCHNEIDER
 4" DOWN
 8/30/02, MB
 SET MAG/WASHER
 11/26/02, MB
 FD MAG/WASHER
 579REFB3
 6/21/11, TMR
 FD MAG/WASHER
 REFA2
 10/29/18, JFO
 SET MAG/WASHER
 8/24/21, JFO

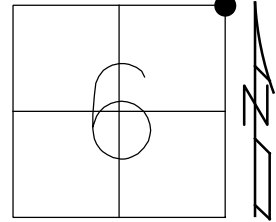
DIST.
 2A-3 = 39.33'



O.D.O.T. DISTRICT 2 SURVEY OFFICE (USE ONLY)

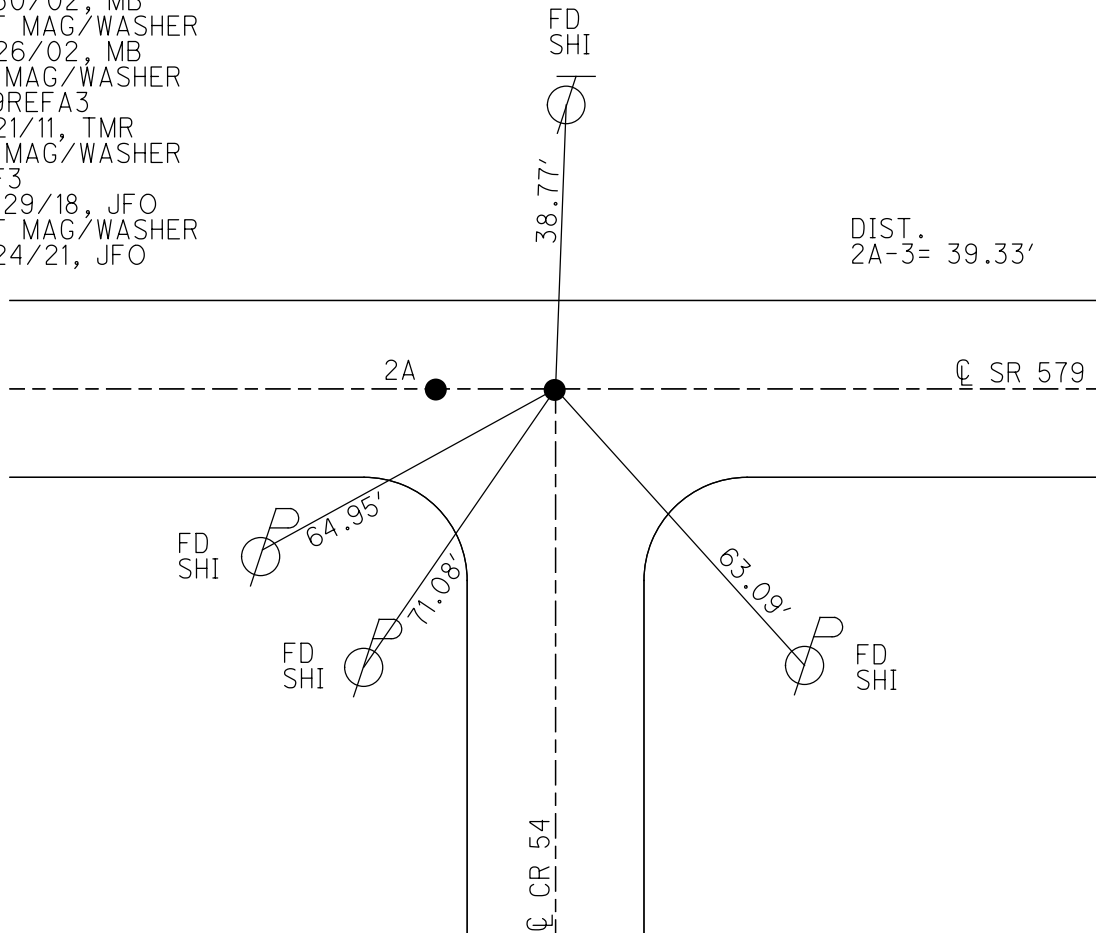
PERSONNEL _____ REFERENCE NO. 3 SHEET 4 OF 36
 NOTES RHOADES DATE 10/5/20 ROUTE SR 579
 H.C. AUBLE WEATHER SUNNY COUNTY OTTAWA
 R.C. O'DONNELL TEMP. 44° TOWNSHIP ALLEN
 DWG BY RHOADES PID 95759 SECTION 6
 T 7 N R 13 E

TYPE MONUMENT MAG/WASHER
 ON SURFACE - ~~BELOW~~ ON
 OFFSET Q PAVEMENT ON LT : RT
11.6' TO LT EDGE PAVEMENT
 STATION: 52+04.66



HORZ. DATUM: NAD83 2011 GEOID: NAVD88 2012A
 GRID: NORTHING: 706469.131 EASTING: 1723242.258

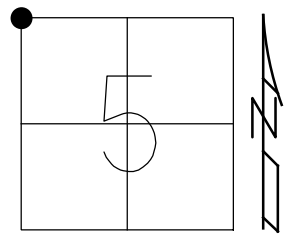
RECORD:
 FD R.R. SPIKE
 9/17/71, SCHNEIDER
 4" DOWN
 8/30/02, MB
 SET MAG/WASHER
 11/26/02, MB
 FD MAG/WASHER
 579REFA3
 6/21/11, TMR
 FD MAG/WASHER
 REF3
 10/29/18, JFO
 SET MAG/WASHER
 8/24/21, JFO



O.D.O.T. DISTRICT 2 SURVEY OFFICE (USE ONLY)

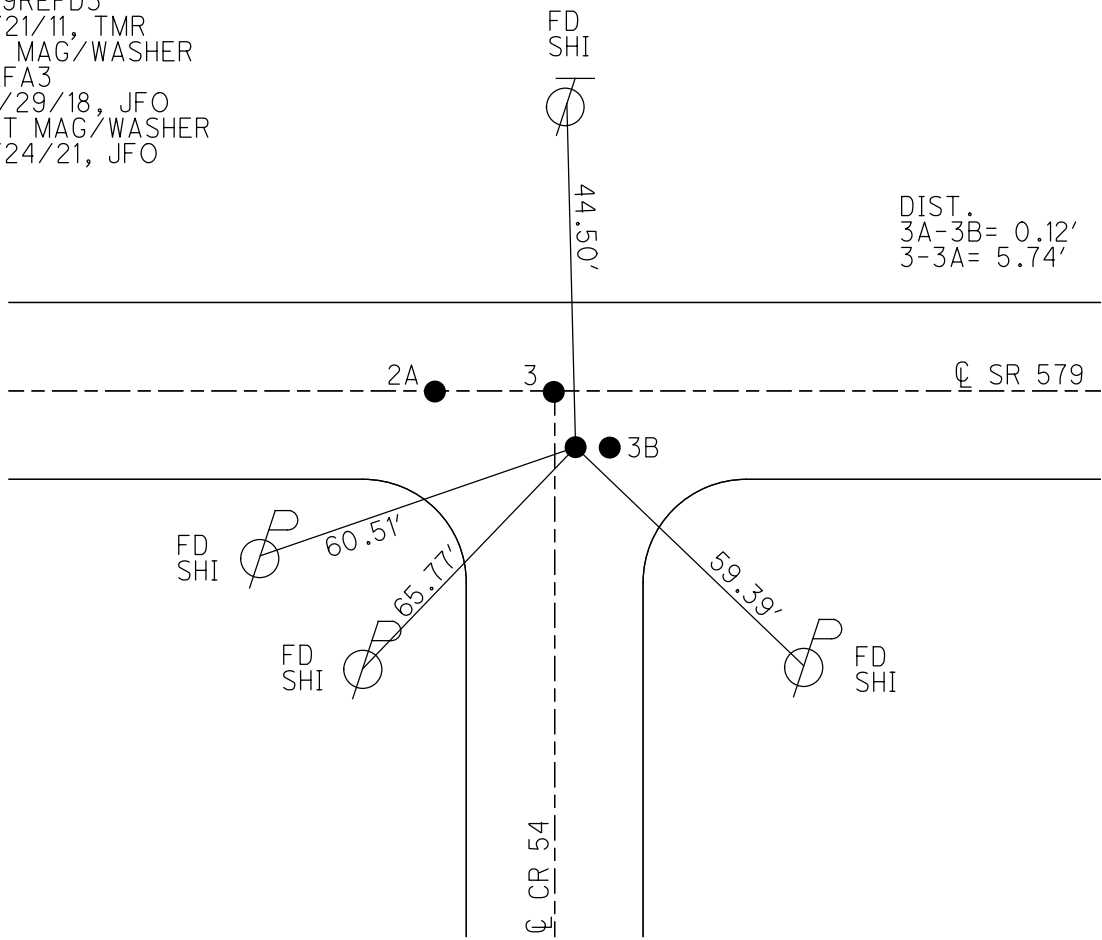
PERSONNEL _____ REFERENCE NO. 3 A SHEET 5 OF 36
 NOTES RHOADES DATE 8/24/21 ROUTE SR 579
 H.C. O'DONNELL WEATHER SUNNY COUNTY OTTAWA
 R.C. NIESE TEMP. 80° TOWNSHIP ALLEN
 DWG BY RHOADES PID 95759 SECTION 5
 T 7 N R 13 E

TYPE MONUMENT MAG/WASHER
 ON SURFACE - ~~BELOW~~ ON
 OFFSET CL PAVEMENT 5.7' ~~LT~~ : RT
17.4' TO LT EDGE PAVEMENT
 STATION: 52+05



HORIZ.DATUM: NAD83 2011 GEOID: NAVD88 2012A
 GRID: NORTHING: 706463.391 EASTING: 1723241.906

RECORD:
 SET MAG/WASHER
 11/26/02, MB
 FD MAG/WASHER
 579REFD3
 6/21/11, TMR
 FD MAG/WASHER
 REFA3
 10/29/18, JFO
 SET MAG/WASHER
 8/24/21, JFO



DIST.
 3A-3B= 0.12'
 3-3A= 5.74'

O.D.O.T. DISTRICT 2 SURVEY OFFICE (USE ONLY)

PERSONNEL

REFERENCE NO. 3 B

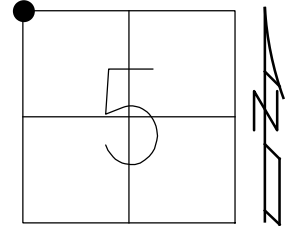
SHEET 6 OF 36

NOTES RHOADES DATE 8/24/21
 H.C. O'DONNELL WEATHER SUNNY
 R.C. NIESE TEMP. 80°

ROUTE SR 579
 COUNTY OTTAWA
 TOWNSHIP ALLEN
 SECTION 5
 T 7 N R 13 E

DWG BY RHOADES PID 95759

TYPE MONUMENT MAG/WASHER
 ON SURFACE - ~~BELOW~~ ON
 OFFSET CL PAVEMENT 5.7' LT : RT
17.4' TO LT EDGE PAVEMENT
 STATION: 52+05.2



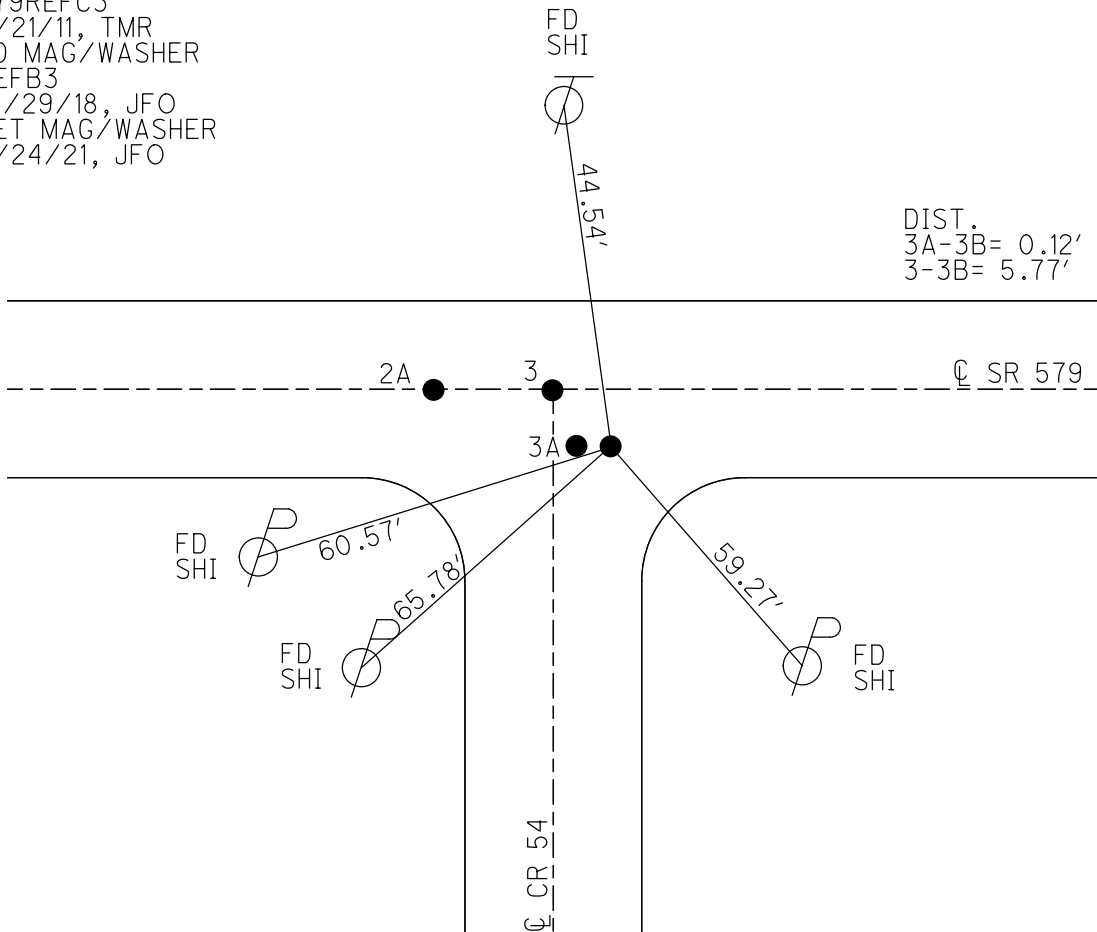
HORZ. DATUM: NAD83 2011

GEOID: NAVD88 2012A

GRID: NORTHING: 706463.379

EASTING: 1723242.008

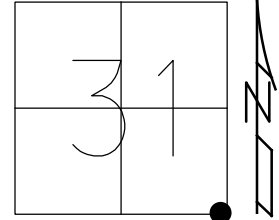
RECORD:
 SET MAG/WASHER
 11/26/02, MB
 FD MAG/WASHER
 579REFC3
 6/21/11, TMR
 FD MAG/WASHER
 REFB3
 10/29/18, JFO
 SET MAG/WASHER
 8/24/21, JFO



O.D.O.T. DISTRICT 2 SURVEY OFFICE (USE ONLY)

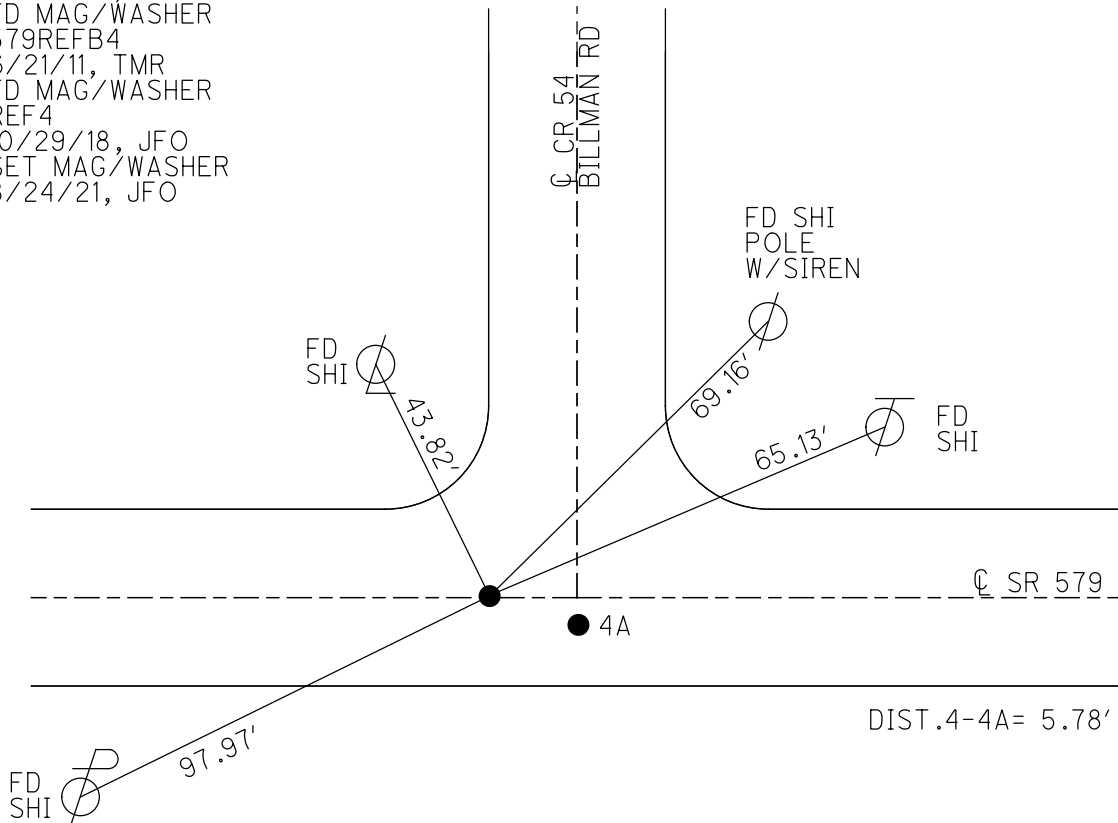
PERSONNEL _____ REFERENCE NO. 4 SHEET 7 OF 36
 NOTES RHOADES DATE 10/5/20 ROUTE SR 579
 H.C. AUBLE WEATHER SUNNY COUNTY OTTAWA
 R.C. O'DONNELL TEMP. 43° TOWNSHIP ALLEN
 DWG BY RHOADES PID 95759 SECTION 31
 T 8 N R 13 E

TYPE MONUMENT MAG/WASHER
 ON SURFACE - ~~BELOW~~ ON _____
 OFFSET 0.5' ~~±~~ : RT
11.3' TO RT EDGE PAVEMENT
 STATION: 53+32.8



HORIZ.DATUM: NAD83 2011 GEOID: NAVD88 2012A
 GRID: NORTHING: 706471.598 EASTING: 1723372.214

RECORD:
 FD MAG/WASHER
 8/30/02, MB
 SET MAG/WASHER
 11/26/02, MB
 FD MAG/WASHER
 579REFB4
 6/21/11, TMR
 FD MAG/WASHER
 REF4
 10/29/18, JFO
 SET MAG/WASHER
 8/24/21, JFO



O.D.O.T. DISTRICT 2 SURVEY OFFICE (USE ONLY)

PERSONNEL

REFERENCE NO. 4 A

SHEET 8 OF 36

NOTES RHOADES

DATE 10/5/20

ROUTE SR 579

H.C. AUBLE

WEATHER SUNNY

COUNTY OTTAWA

R.C. O'DONNELL

TEMP. 43°

TOWNSHIP ALLEN

SECTION 31

DWG BY RHOADES

PID 95759

T 8 N R 13 E

TYPE MONUMENT MAG/WASHER

ON SURFACE - ~~BELOW~~ ON

OFFSET 6.2' ~~LT~~ : RT

5.8' TO RT EDGE PAVEMENT

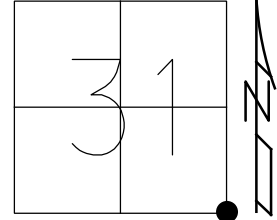
STATION: 53+38.61

HORZ.DATUM: NAD83 2011

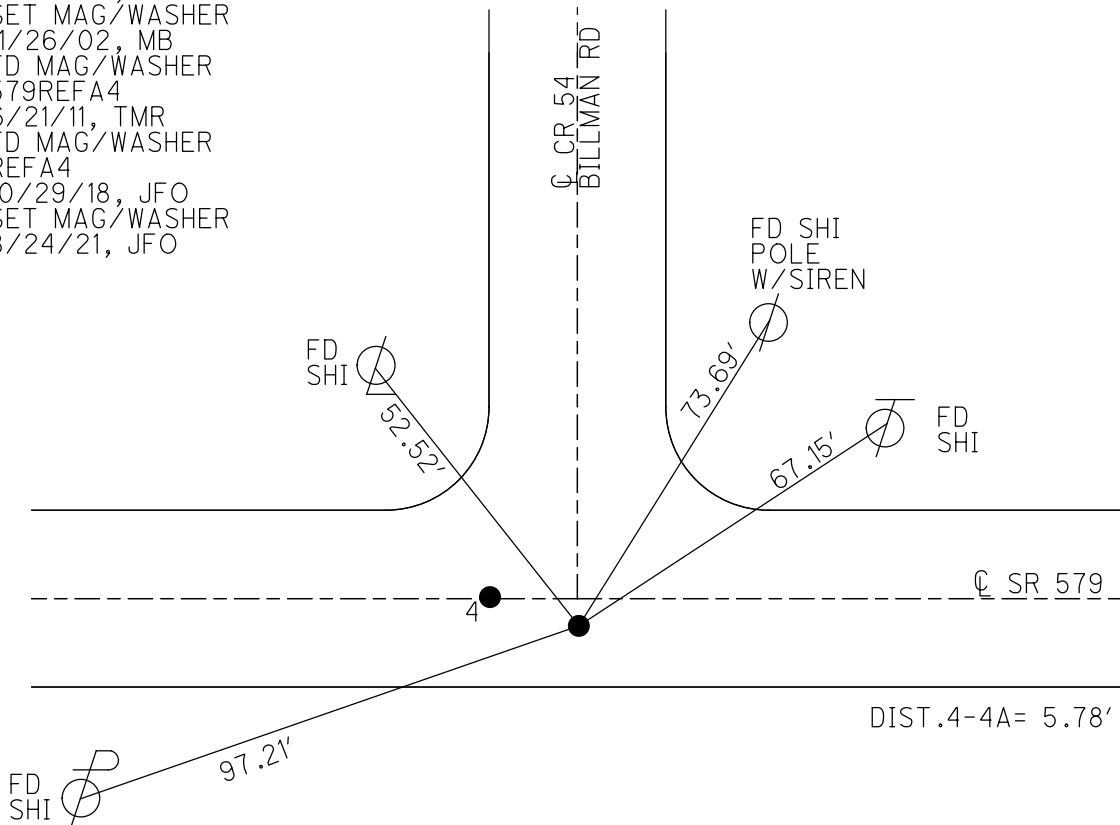
GEOID: NAVD88 2012A

GRID: NORTHING: 706466.137

EASTING: 1723374.195



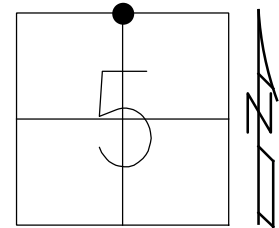
RECORD:
 FD BOAT SPIKE
 FD MAG/WASHER
 2" DOWN
 8/30/02, MB
 SET MAG/WASHER
 11/26/02, MB
 FD MAG/WASHER
 579REFA4
 6/21/11, TMR
 FD MAG/WASHER
 REFA4
 10/29/18, JFO
 SET MAG/WASHER
 8/24/21, JFO



O.D.O.T. DISTRICT 2 SURVEY OFFICE (USE ONLY)

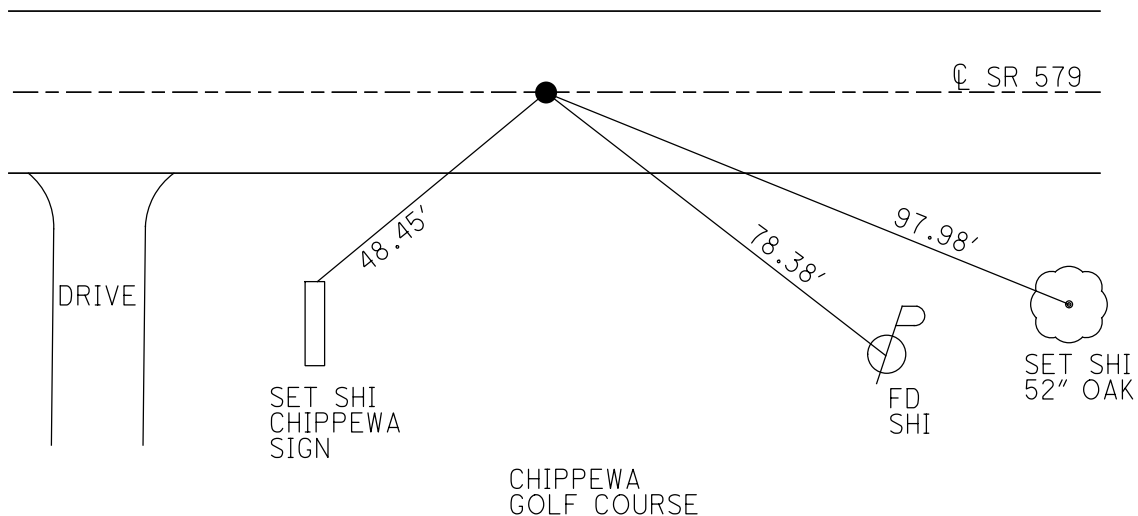
PERSONNEL	REFERENCE NO. <u>5</u>	SHEET <u>9</u> OF <u>36</u>
NOTES <u>RHOADES</u>	DATE <u>10/5/20</u>	ROUTE <u>SR 579</u>
H.C. <u>AUBLE</u>	WEATHER <u>SUNNY</u>	COUNTY <u>OTTAWA</u>
R.C. <u>O'DONNELL</u>	TEMP. <u>46°</u>	TOWNSHIP <u>ALLEN</u>
		SECTION <u>5</u>
DWG BY <u>RHOADES</u>	PID <u>95759</u>	T <u>7</u> N R <u>13</u> E

TYPE MONUMENT MAG/WASHER
 ON SURFACE - ~~BELOW~~ ON
 OFFSET ☉ PAVEMENT ON LT : RT
11.3' TO RT EDGE PAVEMENT
 STATION: 77+89.33



HORIZ.DATUM: NAD83 2011 GEOID: NAVD88 2012A
 GRID: NORTHING: 706518.334 EASTING: 1725826.448

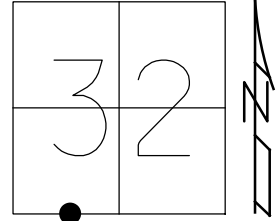
RECORD: P.I.
 STA. 77+91.2
 Δ= 0°13' 30" LT
 FD R.R.SPIKE SHANK
 8/28/02, MB
 SET MAG/WASHER
 11/05/02, MB
 FD MAG/WASHER
 579REF5
 6/21/11, TMR
 FD MAG/WASHER
 REF5
 10/29/18, JFO
 SET MAG/WASHER
 8/24/21, JFO



O.D.O.T. DISTRICT 2 SURVEY OFFICE (USE ONLY)

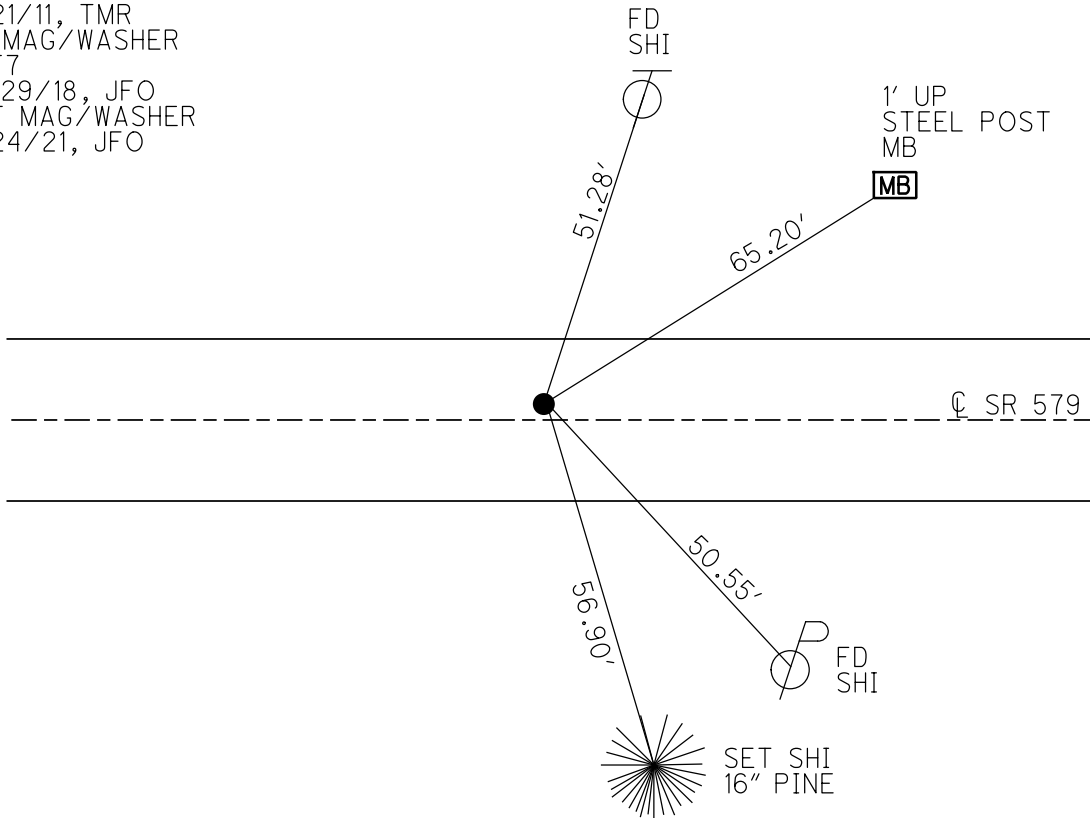
PERSONNEL _____ REFERENCE NO. 7 SHEET 10 OF 36
 NOTES RHOADES DATE 10/5/20 ROUTE SR 579
 H.C. AUBLE WEATHER SUNNY COUNTY OTTAWA
 R.C. O'DONNELL TEMP. 46° TOWNSHIP ALLEN
 DWG BY RHOADES PID 95759 SECTION 32
 T 8 N R 13 E

TYPE MONUMENT MAG/WASHER
 ON SURFACE - ~~BELOW~~ ON
 OFFSET ☐ PAVEMENT 1.1' LT : RT
9.2' TO LT EDGE PAVEMENT
 STATION: 93+89.14



HORZ. DATUM: NAD83 2011 GEOID: NAVD88 2012A
 GRID: NORTHING: 706552.241 EASTING: 1727308.609

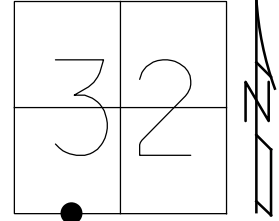
RECORD: P.C.
 SET P.K./WASHER
 9/20/77
 SET MAG/WASHER
 11/26/02, MB
 FD MAG/WASHER
 579REF7
 6/21/11, TMR
 FD MAG/WASHER
 REF7
 10/29/18, JFO
 SET MAG/WASHER
 8/24/21, JFO



O.D.O.T. DISTRICT 2 SURVEY OFFICE (USE ONLY)

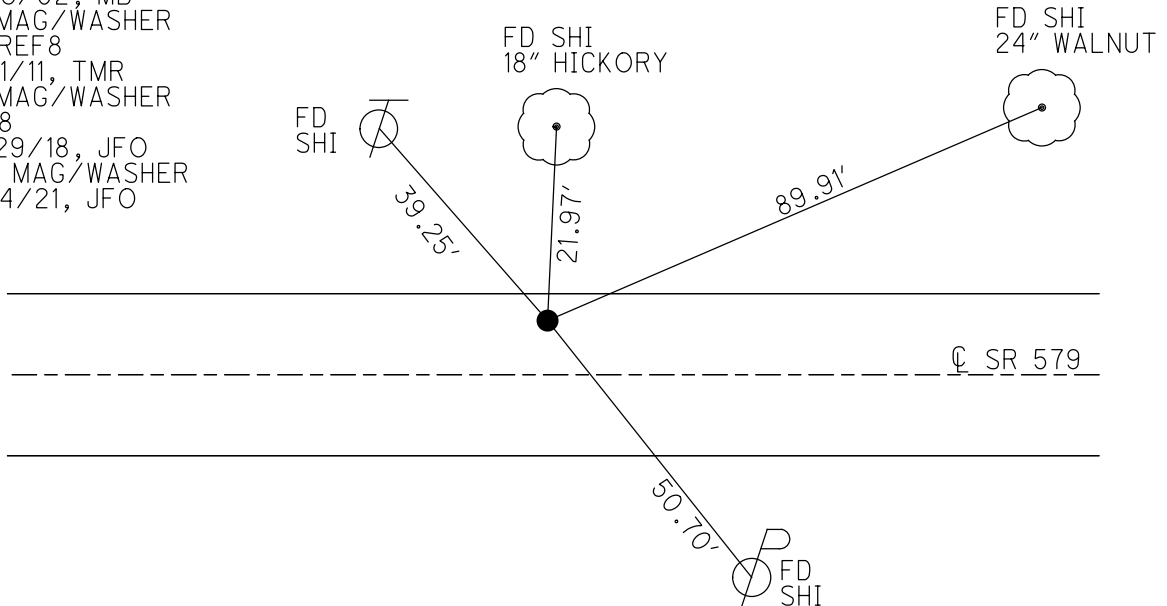
PERSONNEL _____ REFERENCE NO. 8 SHEET 11 OF 36
 NOTES RHOADES DATE 10/5/20 ROUTE SR 579
 H.C. AUBLE WEATHER SUNNY COUNTY OTTAWA
 R.C. O'DONNELL TEMP. 46° TOWNSHIP ALLEN
 DWG BY RHOADES PID 95759 SECTION 32
 T 8 N R 13 E

TYPE MONUMENT MAG/WASHER
 ON SURFACE - ~~BELOW~~ ON
 OFFSET CL PAVEMENT 10' LT : ~~RT~~
1.6' TO LT EDGE PAVEMENT
 STATION: 94+97.33



HORZ.DATUM: NAD83 2011 GEOID: NAVD88 2012A
 GRID: NORTHING: 706557.458 EASTING: 1727534.001

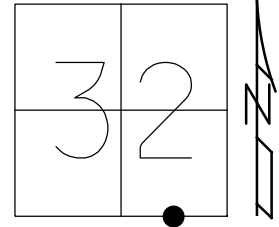
RECORD: P.I.
 STA. 95+00
 $\Delta = 9^\circ 00' RT$
 SET P.K./WASHER
 9/20/77
 FD P.K./WASHER
 9/19/02, MB
 SET MAG/WASHER
 11/26/02, MB
 FD MAG/WASHER
 579REF8
 6/21/11, TMR
 FD MAG/WASHER
 REF8
 10/29/18, JFO
 SET MAG/WASHER
 8/24/21, JFO



O.D.O.T. DISTRICT 2 SURVEY OFFICE (USE ONLY)

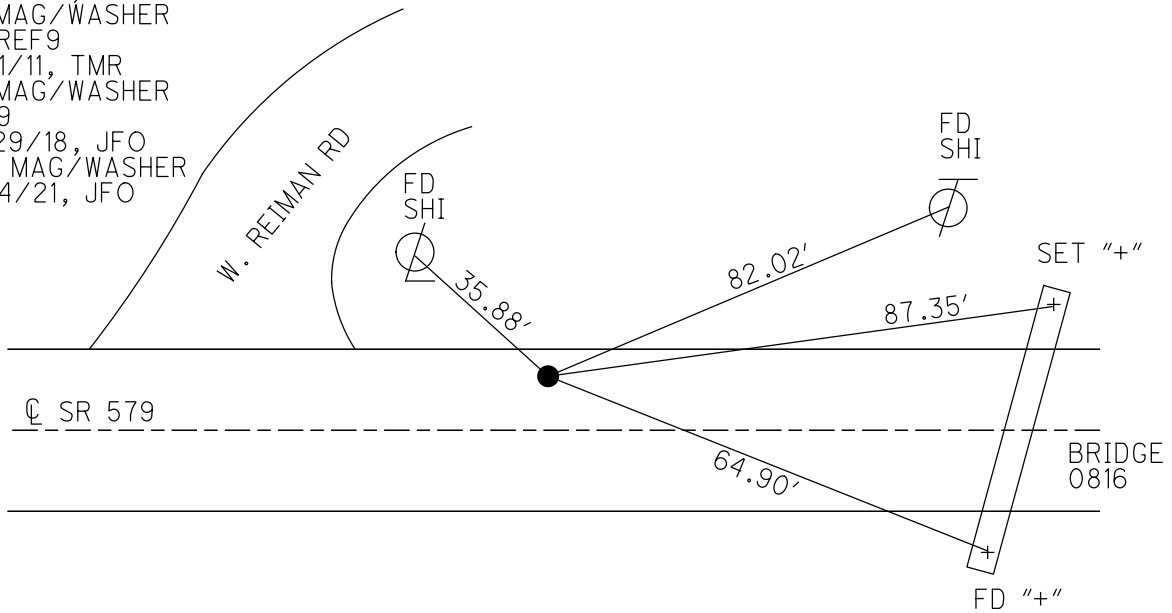
PERSONNEL _____ REFERENCE NO. 9 SHEET 12 OF 36
 NOTES RHOADES DATE 10/5/20 ROUTE SR 579
 H.C. AUBLE WEATHER SUNNY COUNTY OTTAWA
 R.C. O'DONNELL TEMP. 46° TOWNSHIP ALLEN
 DWG BY RHOADES PID 95759 SECTION 32
 T 8 N R 13 E

TYPE MONUMENT MAG/WASHER
 ON SURFACE - ~~BELOW~~ ON
 OFFSET ☉ PAVEMENT ON LT : RT
11.9' TO LT EDGE PAVEMENT
 STATION: 97+25.08



HORZ. DATUM: NAD83 2011 GEOID: NAVD88 2012A
 GRID: NORTHING: 706526.420 EASTING: 1727757.472

RECORD: P.T.
 SET P.K./WASHER
 9/20/77
 FD P.K./WASHER
 9/19/02, MB
 SET MAG/WASHER
 11/26/02, MB
 FD MAG/WASHER
 579REF9
 6/21/11, TMR
 FD MAG/WASHER
 REF9
 10/29/18, JFO
 SET MAG/WASHER
 8/24/21, JFO



O.D.O.T. DISTRICT 2 SURVEY OFFICE (USE ONLY)

PERSONNEL _____ REFERENCE NO. 10 SHEET 13 OF 36
 NOTES MILLER DATE 12/29/23 ROUTE SR 579
 H.C. RHOADES WEATHER CLOUDY COUNTY OTTAWA
 R.C. MILLER TEMP. 39° TOWNSHIP ALLEN
 DWG BY RHOADES PID PAVING TRAIN SECTION 5
 T 7 N R 13 E

TYPE MONUMENT MAG/WASHER

ON SURFACE - ~~BELOW~~ ON

OFFSET Q PAVEMENT ON LT : RT

11.9' TO LT EDGE PAVEMENT

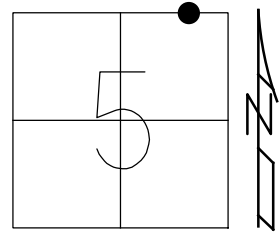
STATION: 102+32.18

HORZ. DATUM: NAD83 2011

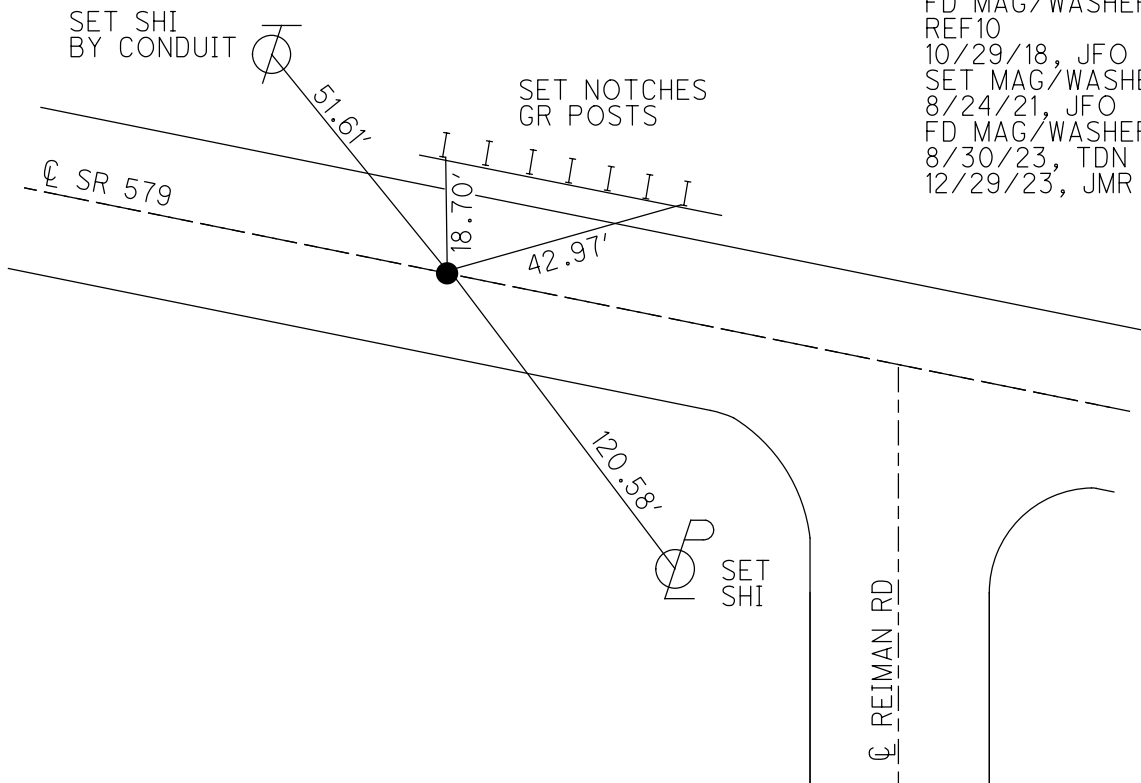
GEOID: NAVD88 2012A

GRID: NORTHING: 706457.383

EASTING: 1728262.979



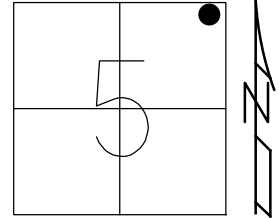
RECORD: P.C.
 SET P.K./WASHER
 9/20/77
 FD P.K./WASHER
 9/20/02, MB
 SET MAG/WASHER
 11/26/02, MB
 FD MAG/WASHER
 579REF10
 6/21/11, TMR
 FD MAG/WASHER
 REF10
 10/29/18, JFO
 SET MAG/WASHER
 8/24/21, JFO
 FD MAG/WASHER
 8/30/23, TDN
 12/29/23, JMR



O.D.O.T. DISTRICT 2 SURVEY OFFICE (USE ONLY)

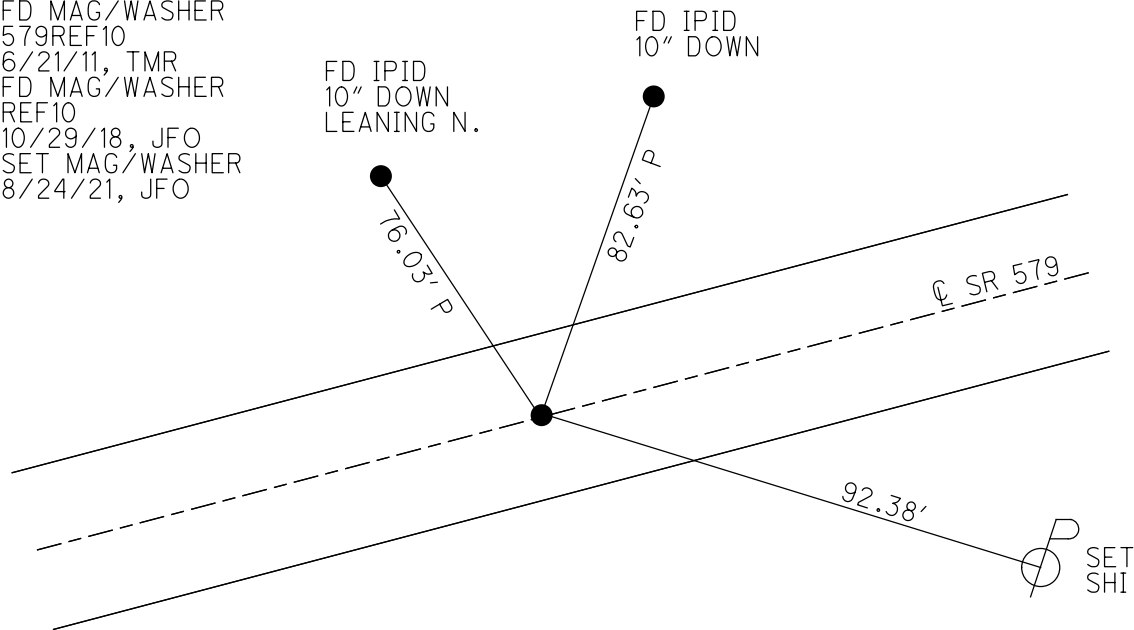
PERSONNEL _____ REFERENCE NO. 11 SHEET 14 OF 36
 NOTES RHOADES DATE 10/5/20 ROUTE SR 579
 H.C. AUBLE WEATHER SUNNY COUNTY OTTAWA
 R.C. O'DONNELL TEMP. 46° TOWNSHIP ALLEN
 DWG BY RHOADES PID 95759 SECTION 5
 T 7 N R 13 E

TYPE MONUMENT MAG/WASHER
 ON SURFACE - ~~BELOW~~ ON
 OFFSET Q PAVEMENT ON LT : RT
11.9' TO LT EDGE PAVEMENT
 STATION: 111+53.87



HORIZ.DATUM: NAD83 2011 GEOID: NAVD88 2012A
 GRID: NORTHING: 706457.383 EASTING: 1728262.979

RECORD: P.T.
 SET P.K./WASHER
 9/20/77
 FD P.K./WASHER
 9/20/02, MB
 SET MAG/WASHER
 11/26/02, MB
 FD MAG/WASHER
 579REF10
 6/21/11, TMR
 FD MAG/WASHER
 REF10
 10/29/18, JFO
 SET MAG/WASHER
 8/24/21, JFO



O.D.O.T. DISTRICT 2 SURVEY OFFICE (USE ONLY)

PERSONNEL

REFERENCE NO. 12

SHEET 15 OF 36

NOTES RHOADES

DATE 10/5/20

ROUTE SR 579

H.C. AUBLE

WEATHER SUNNY

COUNTY OTTAWA

R.C. O'DONNELL

TEMP. 46°

TOWNSHIP ALLEN

SECTION 4

DWG BY RHOADES

PID 95759

T 7 N R 13 E

TYPE MONUMENT MAG/WASHER

ON SURFACE - ~~BELOW~~ ON

OFFSET Q PAVEMENT ON _____ LT : RT

11.7' TO LT EDGE PAVEMENT

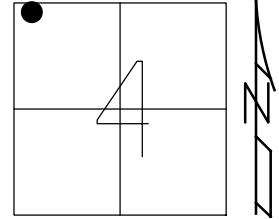
STATION: 116+48.06

HORIZ.DATUM: NAD83 2011

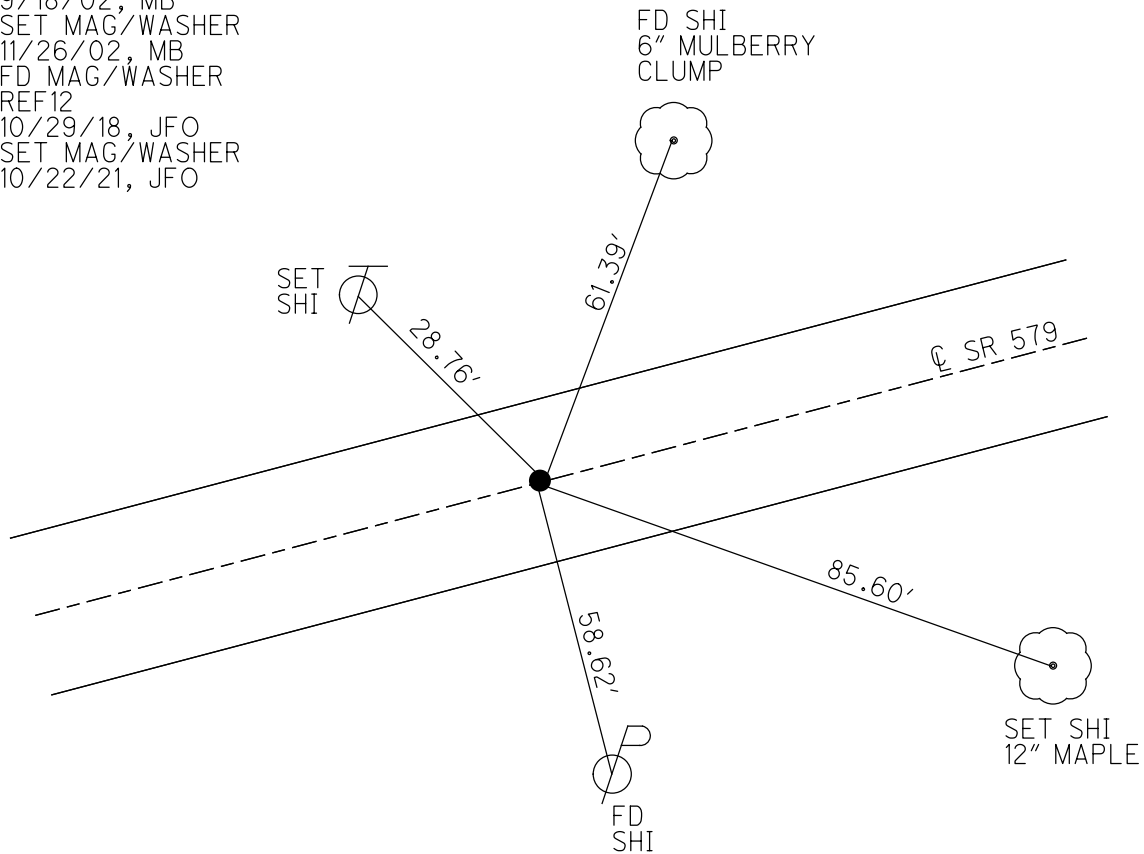
GEOID: NAVD88 2012A

GRID: NORTHING: 706573.594

EASTING: 1729666.735



RECORD: P.C.
 SET P.K.NAIL
 9/20/77
 FD P.K./WASHER
 9/18/02, MB
 SET MAG/WASHER
 11/26/02, MB
 FD MAG/WASHER
 REF12
 10/29/18, JFO
 SET MAG/WASHER
 10/22/21, JFO

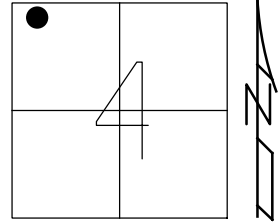


O.D.O.T. DISTRICT 2 SURVEY OFFICE (USE ONLY)

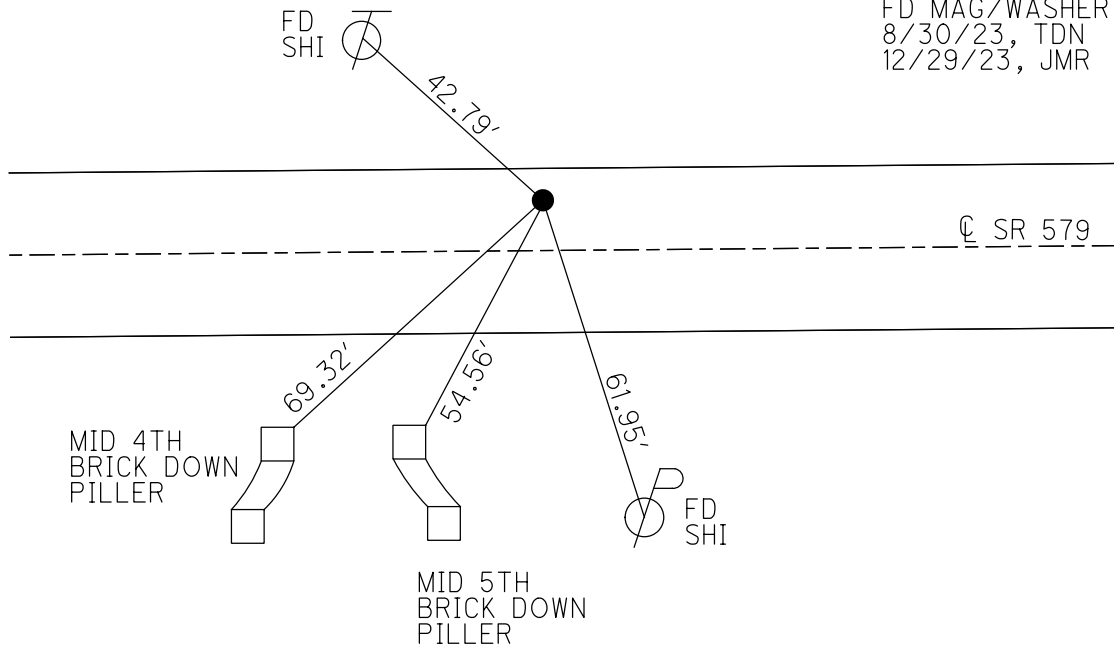
PERSONNEL _____ REFERENCE NO. 13 SHEET 16 OF 36
 NOTES MILLER DATE 12/29/23 ROUTE SR 579
 H.C. RHOADES WEATHER CLOUDY COUNTY OTTAWA
 R.C. MILLER TEMP. 39° TOWNSHIP ALLEN
 DWG BY RHOADES PID PAVING TRAIN SECTION 4
 T 7 N R 13 E

TYPE MONUMENT MAG/WASHER
 ON SURFACE - ~~BELOW~~ ON _____
 OFFSET \odot PAVEMENT 8.1' LT : ~~RT~~
4.0' TO LT EDGE PAVEMENT
 STATION: 118+74.11

HORIZ.DATUM: NAD83 2011 GEOID: NAVD88 2012A
 GRID: NORTHING: 706615.552 EASTING: 1729887.977



RECORD: P.I.
 STA.118+74
 FD R.R.SPIKE
 9/20/77
 FD R.R.SPIKE
 9/18/02, MB
 SET MAG/WASHER
 11/26/02, MB
 D.N.F.
 SHOT TIE CROSSING
 REF13
 10/29/18, JFO
 SET MAG/WASHER
 10/22/21, JFO
 FD MAG/WASHER
 8/30/23, TDN
 12/29/23, JMR



O.D.O.T. DISTRICT 2 SURVEY OFFICE (USE ONLY)

PERSONNEL

REFERENCE NO. 14

SHEET 17 OF 36

NOTES MILLER

DATE 12/29/23

ROUTE SR 579

H.C. RHOADES

WEATHER CLOUDY

COUNTY OTTAWA

R.C. MILLER

TEMP. 39°

TOWNSHIP ALLEN

SECTION 4

DWG BY RHOADES

PID PAVING TRAIN

T 7 N R 13 E

TYPE MONUMENT MAG/WASHER

ON SURFACE - ~~BELOW~~ ON

OFFSET 1.0' ± : RT

10.5' TO RT EDGE PAVEMENT

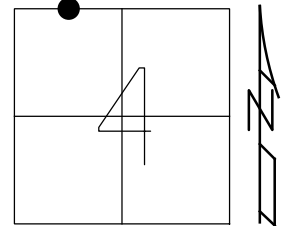
STATION: 120+99.21

HORZ. DATUM: NAD83 2011

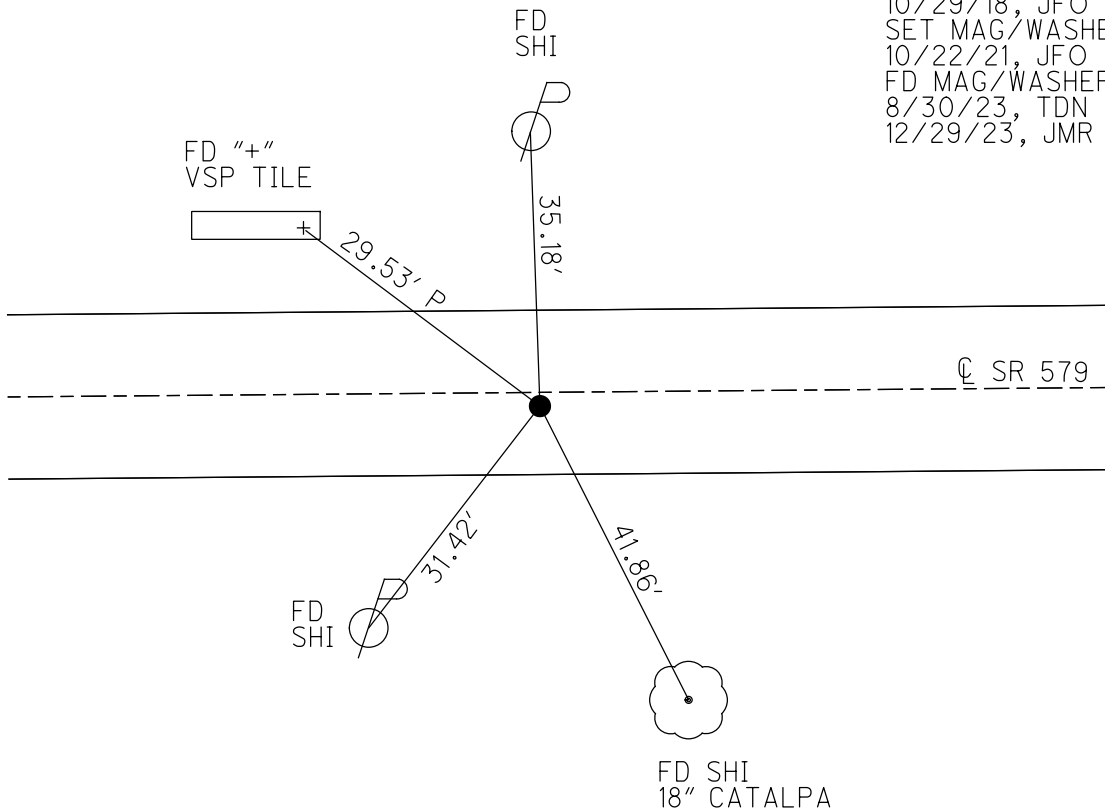
GEOID: NAVD88 2012A

GRID: NORTHING: 706622.191

EASTING: 1730113.523



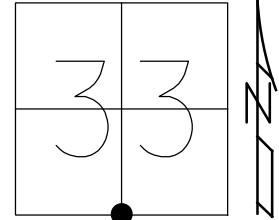
RECORD: P.T.
 STA. 120+99
 FD P.K./WASHER
 9/18/02, MB
 SET MAG/WASHER
 11/26/02, MB
 FD MAG/WASHER
 REF14
 10/29/18, JFO
 SET MAG/WASHER
 10/22/21, JFO
 FD MAG/WASHER
 8/30/23, TDN
 12/29/23, JMR



O.D.O.T. DISTRICT 2 SURVEY OFFICE (USE ONLY)

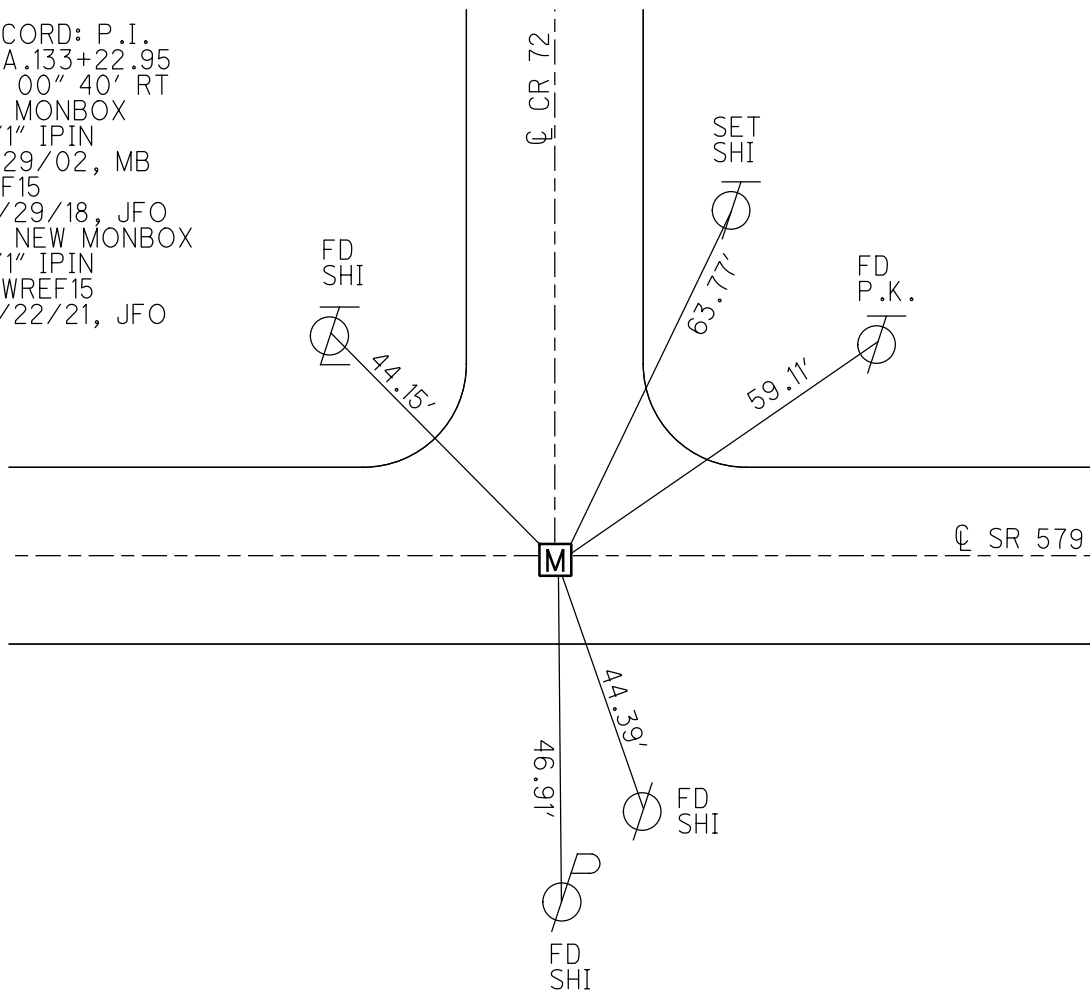
PERSONNEL _____ REFERENCE NO. 15 SHEET 18 OF 36
 NOTES RHOADES DATE 10/6/20 ROUTE SR 579
 H.C. AUBLE WEATHER SUNNY COUNTY OTTAWA
 R.C. O'DONNELL TEMP. 52° TOWNSHIP ALLEN
 DWG BY RHOADES PID 95759 SECTION 33
 T 8 N R 13 E

TYPE MONUMENT MONBOX W/1" IPIN
 ON SURFACE - ~~BELOW~~ ON
 OFFSET 11.0' TO RT EDGE PAVEMENT
 STATION: 132+95.69



HORIZ.DATUM: NAD83 2011 GEOID: NAVD88 2012A
 GRID: NORTHING: 706657.725 EASTING: 1731309.950

RECORD: P.I.
 STA.133+22.95
 $\Delta = 00^\circ 40' RT$
 FD MONBOX
 W/1" IPIN
 9/29/02, MB
 REF15
 10/29/18, JFO
 FD NEW MONBOX
 W/1" IPIN
 NEWREF15
 10/22/21, JFO

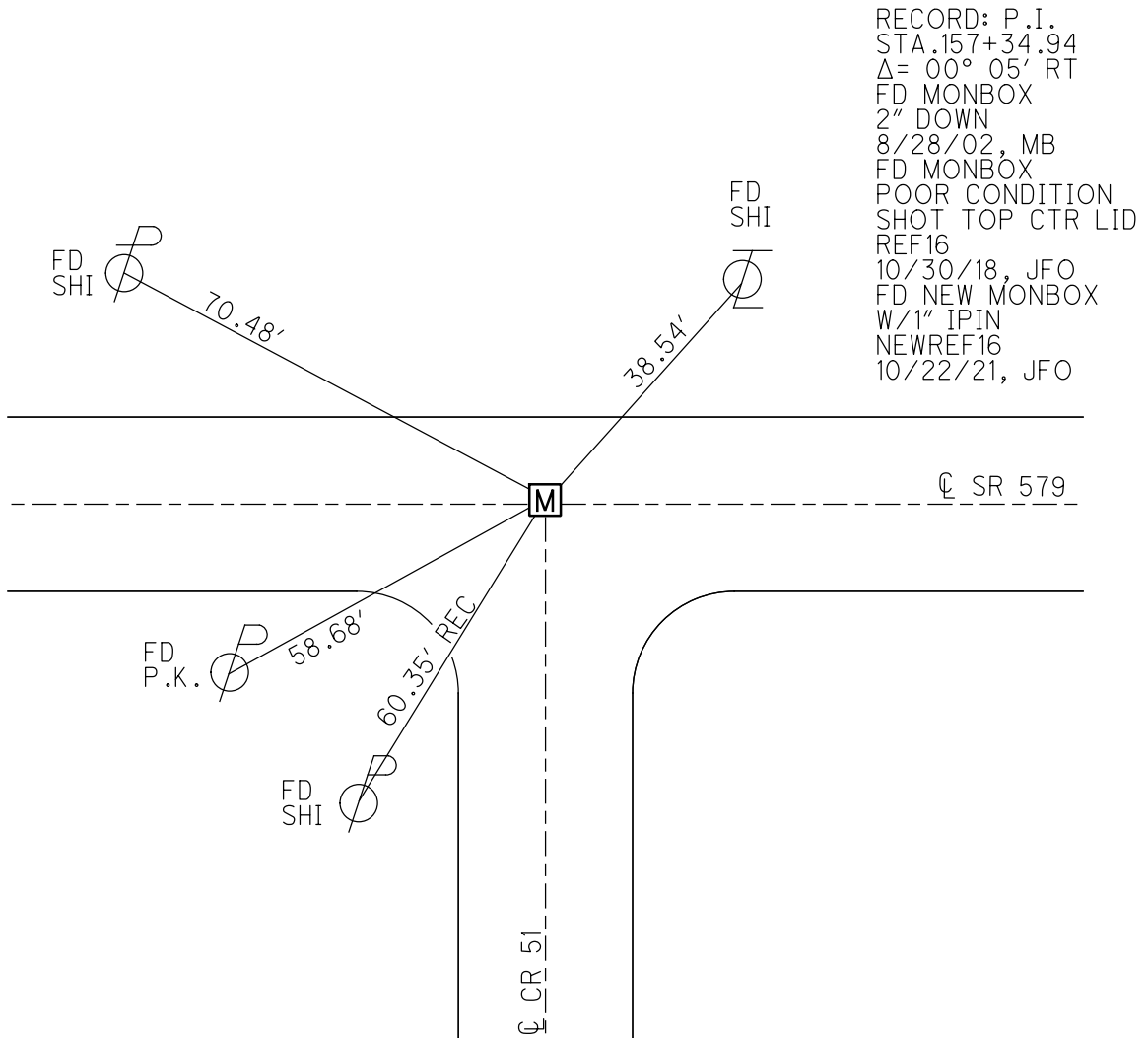
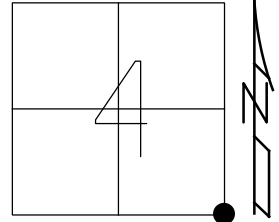


O.D.O.T. DISTRICT 2 SURVEY OFFICE (USE ONLY)

PERSONNEL _____ REFERENCE NO. 16 SHEET 19 OF 36
 NOTES RHOADES DATE 10/6/20 ROUTE SR 579
 H.C. AUBLE WEATHER SUNNY COUNTY OTTAWA
 R.C. O'DONNELL TEMP. 52° TOWNSHIP ALLEN
 DWG BY RHOADES PID 95759 SECTION 4
 T 7 N R 13 E

TYPE MONUMENT MONBOX
 ON SURFACE - ~~BELOW~~ ON _____
 OFFSET \bar{C} PAVEMENT 1.0' ~~±~~ : RT
11.0' TO RT EDGE PAVEMENT
 STATION: 157+07.60

HORZ.DATUM: NAD83 2011 GEOID: NAVD88 2012A
 GRID: NORTHING: 706701.584 EASTING: 1733721.511



O.D.O.T. DISTRICT 2 SURVEY OFFICE (USE ONLY)

PERSONNEL _____ REFERENCE NO. 17 SHEET 20 OF 36

NOTES RHOADES DATE 10/6/20 ROUTE SR 579
 H.C. AUBLE WEATHER SUNNY COUNTY OTTAWA
 R.C. O'DONNELL TEMP. 54° TOWNSHIP ALLEN

DWG BY RHOADES PID 95759 SECTION 33
 T 8 N R 13 E

TYPE MONUMENT P.K.NAIL

~~ON SURFACE~~ - BELOW 1"

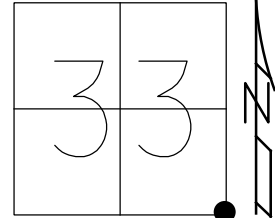
OFFSET \perp PAVEMENT 6.5' \pm : RT

4.4' TO RT EDGE PAVEMENT

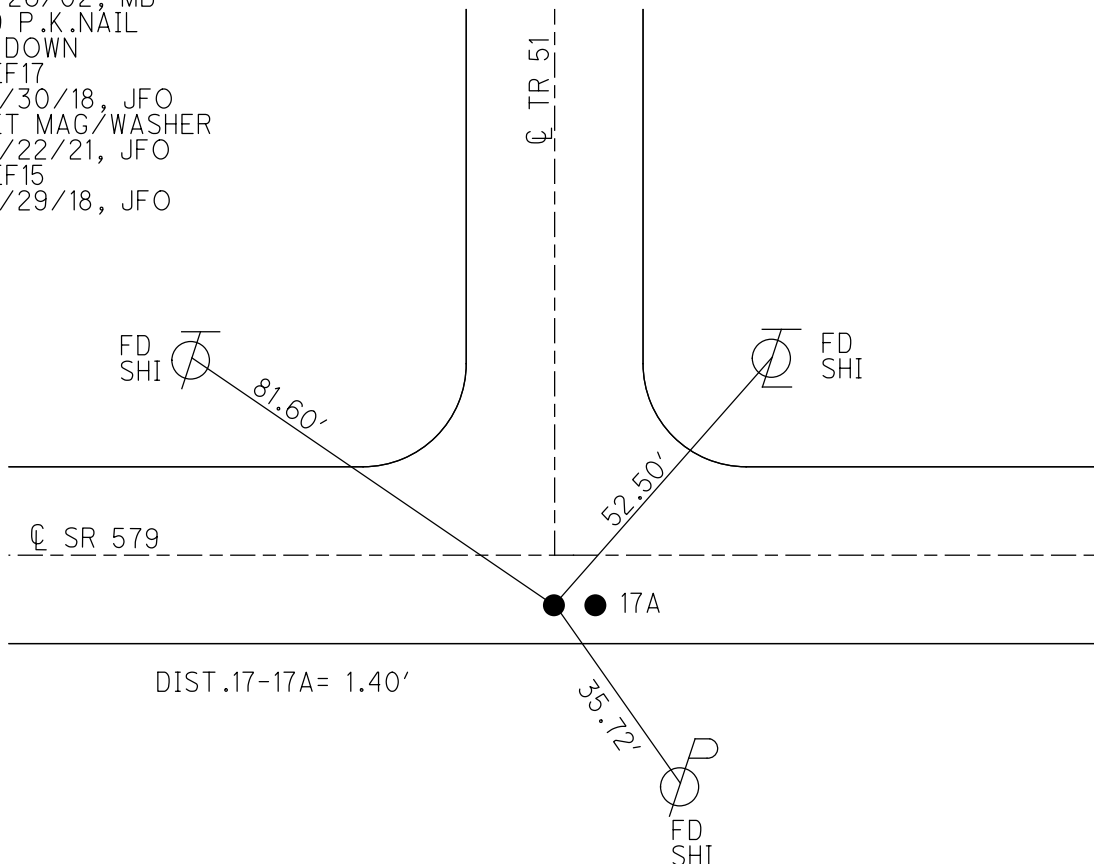
STATION: 159+66.90

HORZ.DATUM: NAD83 2011 GEOID: NAVD88 2012A

GRID: NORTHING: 706705.891 EASTING: 1733980.716



RECORD: P.O.T.
 STA.159+94.25
 FD P.K./WASHER
 3" DOWN
 8/28/02, MB
 SET MAG/WASHER
 11/26/02, MB
 FD P.K.NAIL
 1" DOWN
 REF17
 10/30/18, JFO
 SET MAG/WASHER
 10/22/21, JFO
 REF15
 10/29/18, JFO



O.D.O.T. DISTRICT 2 SURVEY OFFICE (USE ONLY)

PERSONNEL

REFERENCE NO. 17 A

SHEET 21 OF 36

NOTES RHOADES

DATE 10/6/20

ROUTE SR 579

H.C. AUBLE

WEATHER SUNNY

COUNTY OTTAWA

R.C. O'DONNELL

TEMP. 54°

TOWNSHIP ALLEN

SECTION 33

DWG BY RHOADES PID 95759

T 8 N R 13 E

TYPE MONUMENT R.R.SPIKE

~~ON SURFACE~~ - BELOW 3"

OFFSET C PAVEMENT 6.5' ~~RT~~ : RT

4.4' TO RT EDGE PAVEMENT

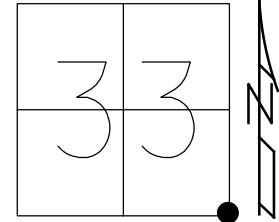
STATION: 159+68.30

HORZ.DATUM: NAD83 2011

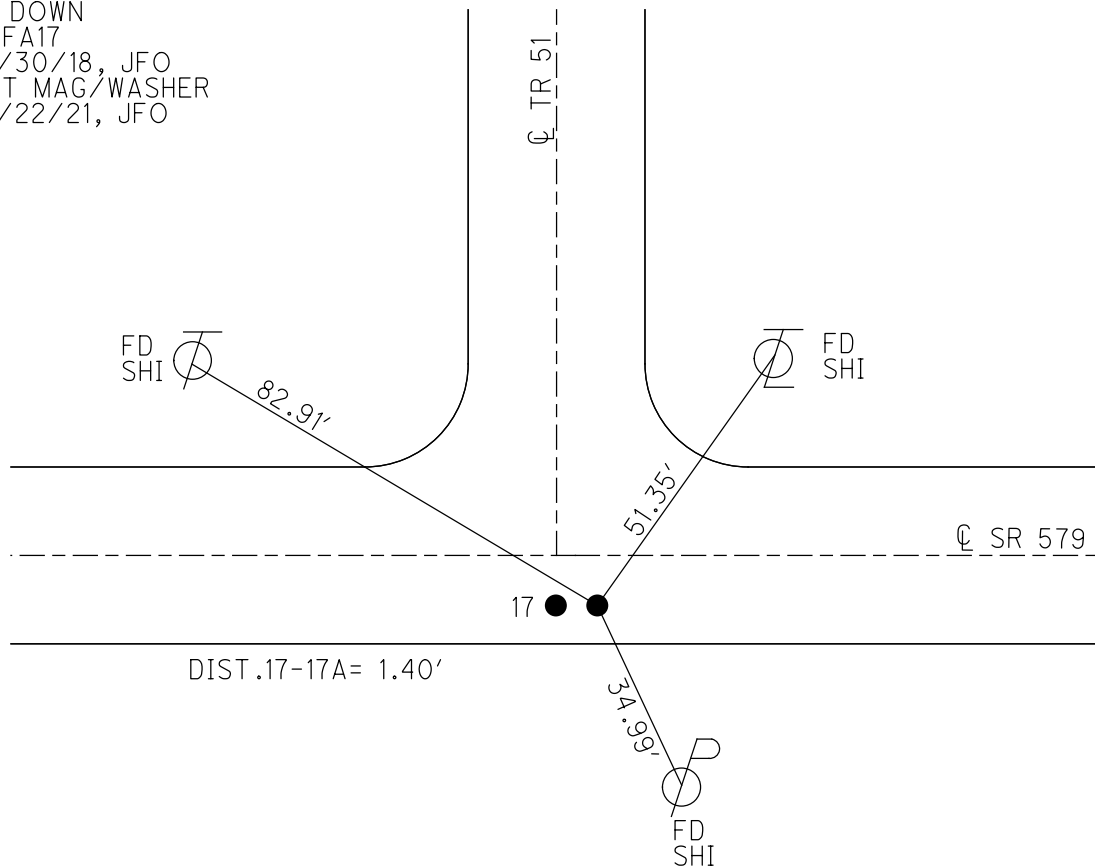
GEOID: NAVD88 2012A

GRID: NORTHING: 706706.019

EASTING: 1733982.161



RECORD: P.O.T.
 FD P.K./WASHER
 4" DOWN
 8/28/02, MB
 SET MAG/WASHER
 11/26/02, MB
 FD R.R.SPIKE
 3" DOWN
 REFA17
 10/30/18, JFO
 SET MAG/WASHER
 10/22/21, JFO



O.D.O.T. DISTRICT 2 SURVEY OFFICE (USE ONLY)

PERSONNEL

REFERENCE NO. 18

SHEET 22 OF 36

NOTES RHOADES

DATE 10/6/20

ROUTE SR 579

H.C. AUBLE

WEATHER SUNNY

COUNTY OTTAWA

R.C. O'DONNELL

TEMP. 54°

TOWNSHIP ALLEN

SECTION 3

DWG BY RHOADES PID 95759

T 7 N R 13 E

TYPE MONUMENT MONBOX W/1" IPIN

ON SURFACE - ~~BELOW~~ ON

OFFSET Q PAVEMENT 3.6' ~~±~~ : RT

7.6' TO RT EDGE PAVEMENT

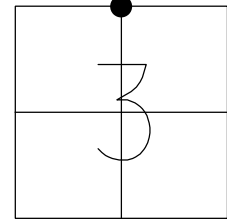
STATION: 183+72.18

HORZ.DATUM: NAD83 2011

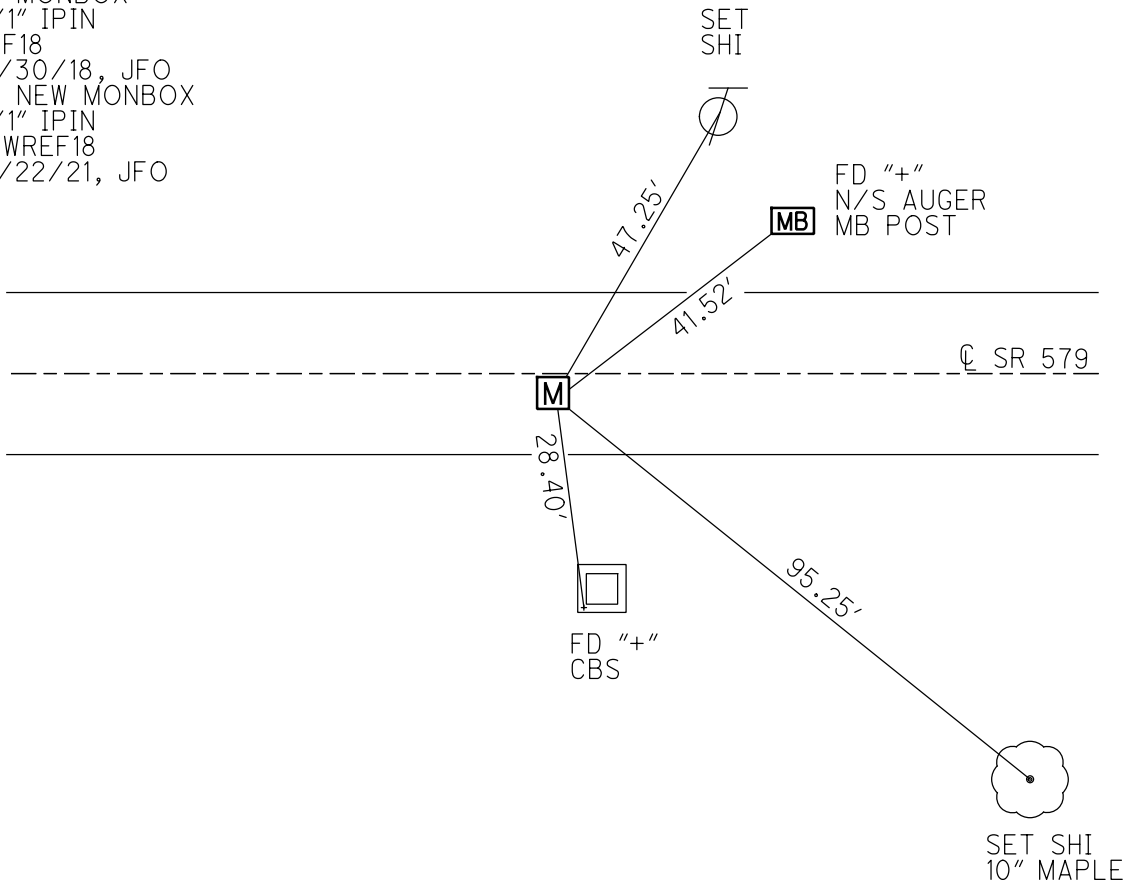
GEOID: NAVD88 2012A

GRID: NORTHING: 706746.393

EASTING: 1736385.623



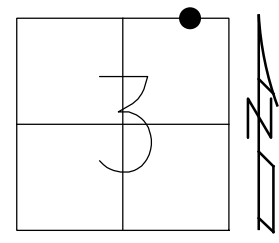
RECORD: P.I.
 STA.184+00.38
 $\Delta = 01^{\circ} 16''$ RT
 FD MONBOX
 8/28/02, MB
 FD MONBOX
 W/1" IPIN
 REF18
 10/30/18, JFO
 FD NEW MONBOX
 W/1" IPIN
 NEWREF18
 10/22/21, JFO



O.D.O.T. DISTRICT 2 SURVEY OFFICE (USE ONLY)

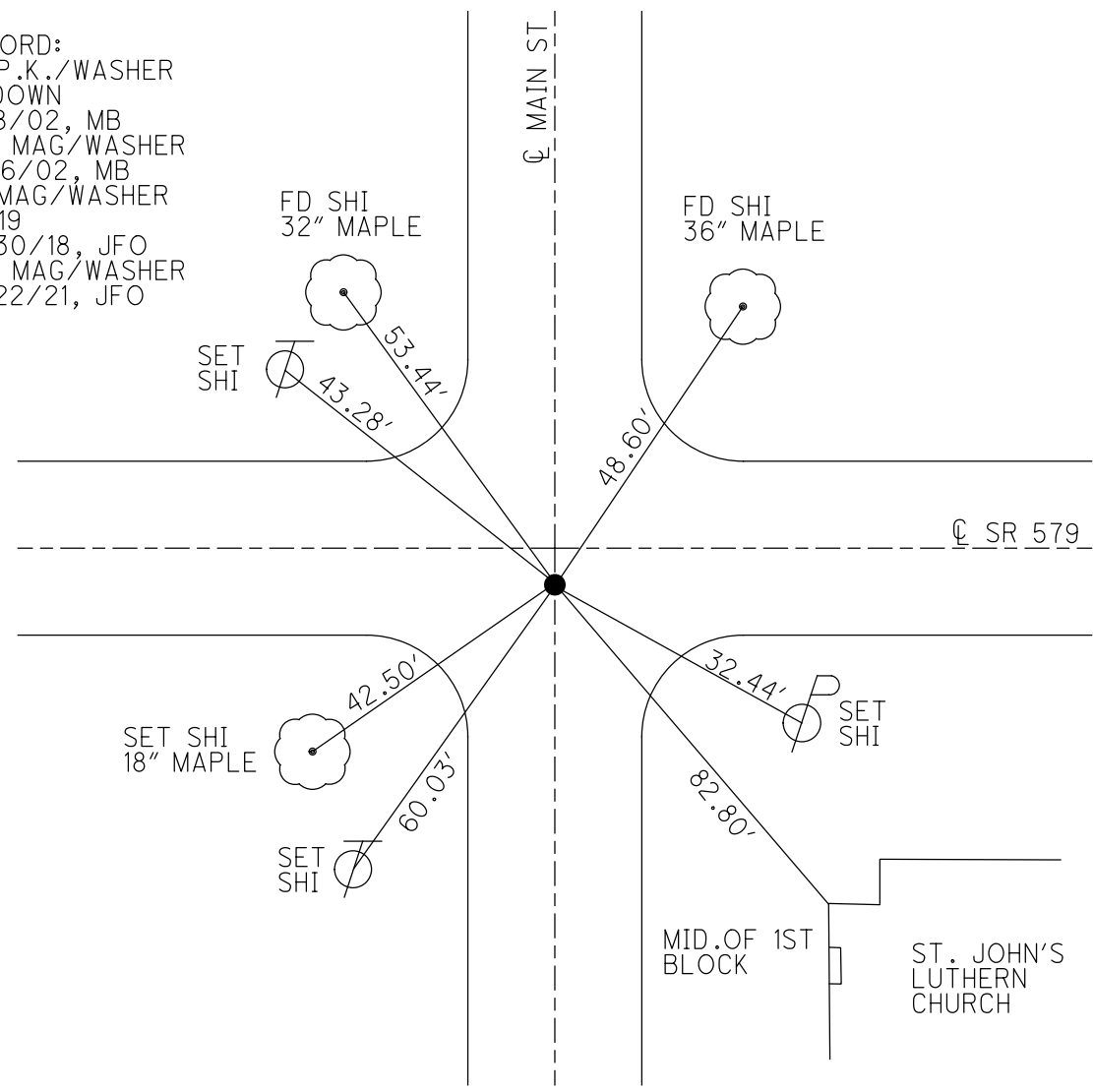
PERSONNEL _____ REFERENCE NO. 19 SHEET 23 OF 36
 NOTES RHOADES DATE 10/6/20 ROUTE SR 579
 H.C. AUBLE WEATHER SUNNY COUNTY OTTAWA
 R.C. O'DONNELL TEMP. 54° TOWNSHIP ALLEN
 DWG BY RHOADES PID 95759 SECTION 3
 T 7 N R 13 E

TYPE MONUMENT MAG/WASHER
 ON SURFACE - ~~BELOW~~ ON _____
 OFFSET \varnothing PAVEMENT 3.6' ~~LT~~ : RT
 - TO - EDGE PAVEMENT
 STATION: 204+55.53



HORZ.DATUM: NAD83 2011 GEOID: NAVD88 2012A
 GRID: NORTHING: 706735.278 EASTING: 1738468.975

RECORD:
 FD P.K./WASHER
 3" DOWN
 9/18/02, MB
 SET MAG/WASHER
 11/26/02, MB
 FD MAG/WASHER
 REF19
 10/30/18, JFO
 SET MAG/WASHER
 10/22/21, JFO



O.D.O.T. DISTRICT 2 SURVEY OFFICE (USE ONLY)

PERSONNEL _____ REFERENCE NO. 20 SHEET 24 OF 36

NOTES RHOADES DATE 10/6/20 ROUTE SR 579

H.C. AUBLE WEATHER SUNNY COUNTY OTTAWA

R.C. O'DONNELL TEMP. 54° TOWNSHIP ALLEN

SECTION 3

DWG BY RHOADES PID 95759

T 7 N R 13 E

TYPE MONUMENT MONBOX W/1" IPIN

ON SURFACE - ~~BELOW~~ ON _____

OFFSET \varnothing PAVEMENT 4.6' ~~LT~~ : RT

15.9' TO LT EDGE PAVEMENT

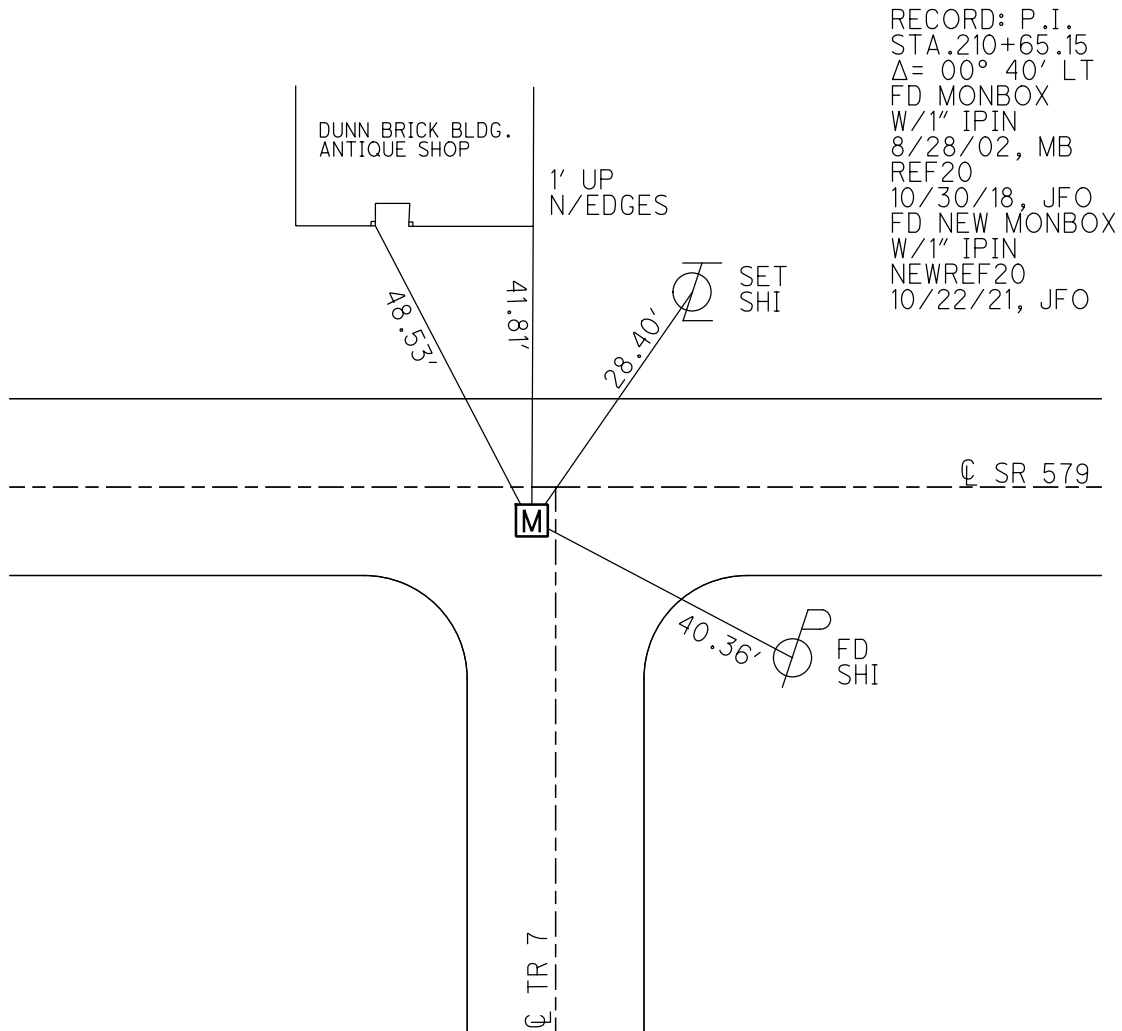
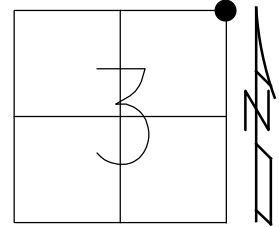
STATION: 210+36.66

HORZ.DATUM: NAD83 2011

GEOID: NAVD88 2012A

GRID: NORTHING: 706732.073

EASTING: 1739050.083



O.D.O.T. DISTRICT 2 SURVEY OFFICE (USE ONLY)

PERSONNEL _____ REFERENCE NO. 21 SHEET 25 OF 36
 NOTES RHOADES DATE 10/6/20 ROUTE SR 579
 H.C. AUBLE WEATHER CLOUDY COUNTY OTTAWA
 R.C. O'DONNELL TEMP. 57° TOWNSHIP ALLEN
 SECTION 34
 DWG BY RHOADES PID 95759 T 8 N R 13 E

TYPE MONUMENT MONBOX W/5/8" IPIN

ON SURFACE - ~~BELOW~~ ON _____

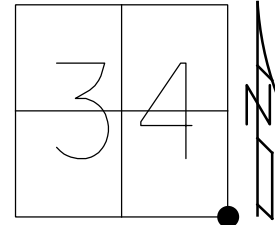
OFFSET 0.6' ~~±~~ : RT

11.7' TO RT EDGE PAVEMENT

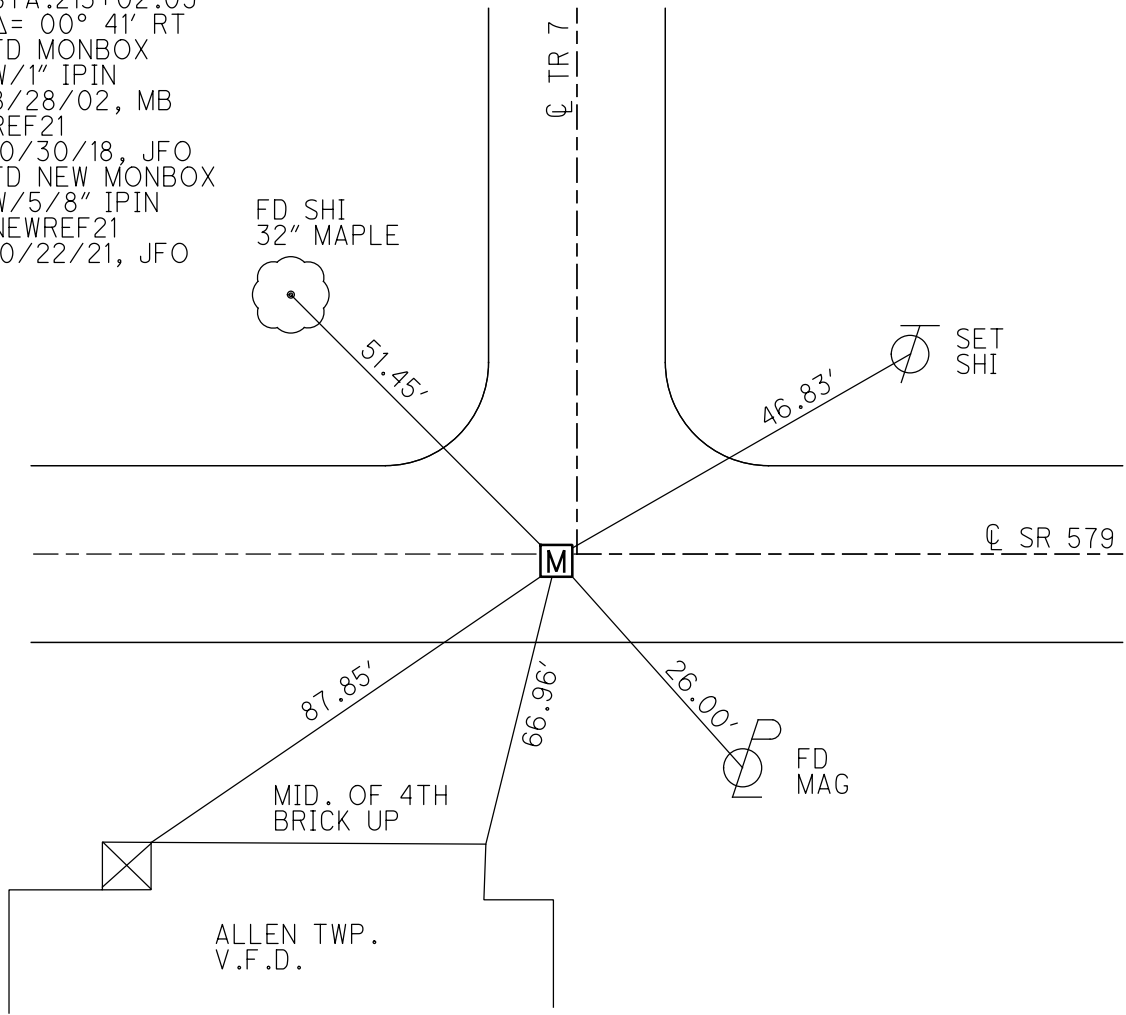
STATION: 212+73.66

HORZ.DATUM: NAD83 2011 GEOID: NAVD88 2012A

GRID: NORTHING: 706733.599 EASTING: 1739287.040



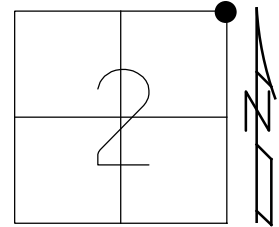
RECORD: P.I.
 STA.213+02.09
 $\Delta = 00^\circ 41' RT$
 FD MONBOX
 W/1" IPIN
 8/28/02, MB
 REF21
 10/30/18, JFO
 FD NEW MONBOX
 W/5/8" IPIN
 NEWREF21
 10/22/21, JFO



O.D.O.T. DISTRICT 2 SURVEY OFFICE (USE ONLY)

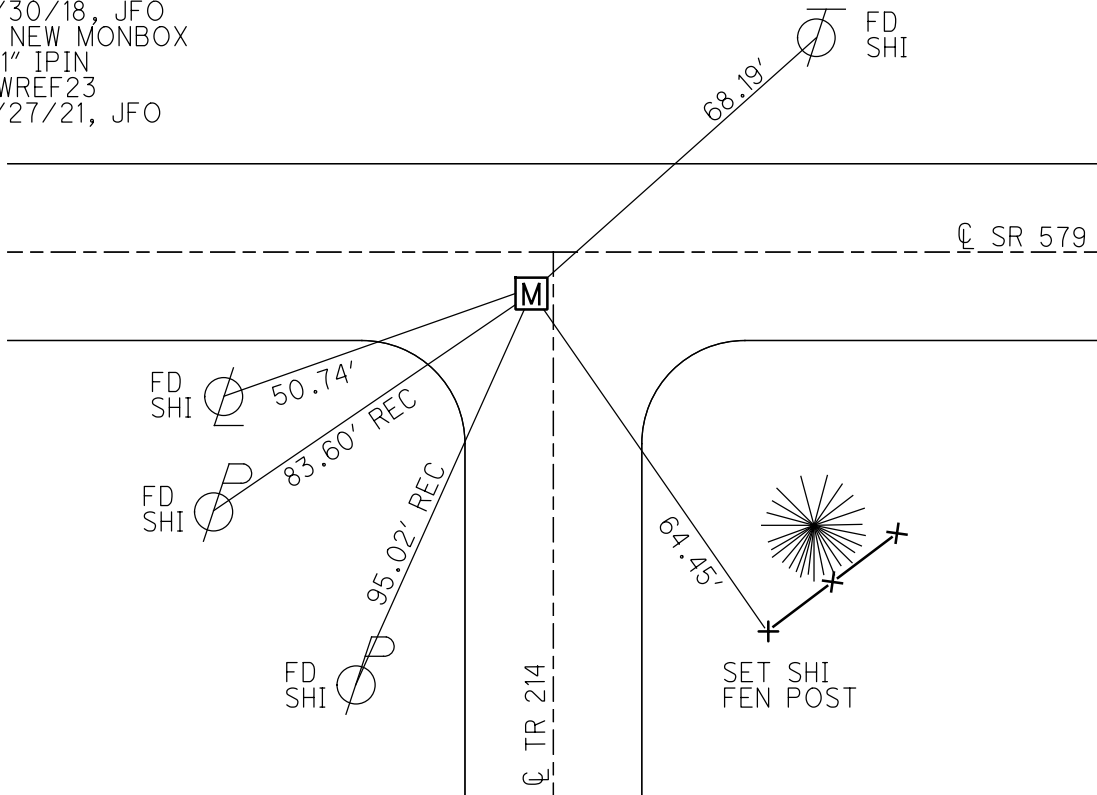
PERSONNEL _____ REFERENCE NO. 23 SHEET 27 OF 36
 NOTES RHOADES DATE 10/6/20 ROUTE SR 579
 H.C. AUBLE WEATHER CLOUDY COUNTY OTTAWA
 R.C. O'DONNELL TEMP. 57° TOWNSHIP ALLEN
 DWG BY RHOADES PID 95759 SECTION 2
 T 7 N R 13 E

TYPE MONUMENT MONBOX W/ "+" ON LID
 ON SURFACE - ~~BELOW~~ ON
 OFFSET CL PAVEMENT 7.1' ~~LT~~ : RT
18.1' TO LT EDGE PAVEMENT
 STATION: 262+98.91



HORZ. DATUM: NAD83 2011 GEOID: NAVD88 2012A
 GRID: NORTHING: 706698.168 EASTING: 1744312.209

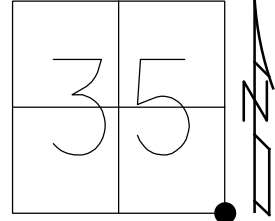
RECORD: P.I.
 STA. 263+26.55
 $\Delta = 00^\circ 14' \text{ LT}$
 FD MONBOX
 W/1" IPIN
 8/28/02, MB
 FD MONBOX
 W/ "+" CTR LID
 POOR CONDITION
 REF23
 10/30/18, JFO
 FD NEW MONBOX
 W/1" IPIN
 NEWREF23
 10/27/21, JFO



O.D.O.T. DISTRICT 2 SURVEY OFFICE (USE ONLY)

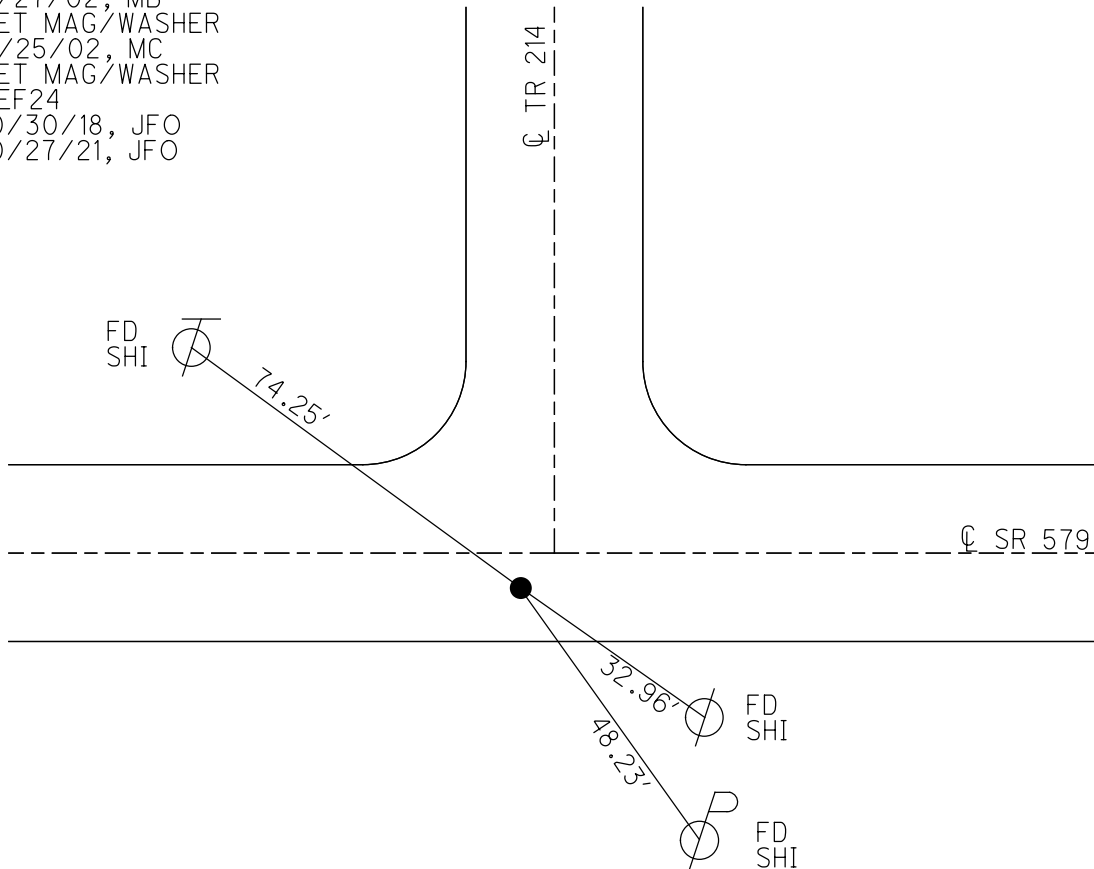
PERSONNEL _____ REFERENCE NO. 24 SHEET 28 OF 36
 NOTES RHOADES DATE 10/30/18 ROUTE SR 579
 H.C. AUBLE WEATHER SUNNY COUNTY OTTAWA
 R.C. O'DONNELL TEMP. 75° TOWNSHIP ALLEN
 DWG BY RHOADES PID 95759 SECTION 35
 T 8 N R 13 E

TYPE MONUMENT MAG/WASHER
 ON SURFACE - ~~BELOW~~ ON
 OFFSET \perp PAVEMENT 6.1' ~~LT~~ : RT
5.4' TO RT EDGE PAVEMENT
 STATION: 265+76.19



HORZ.DATUM: NAD83 2011 GEOID: NAVD88 2012A
 GRID: NORTHING: 706697.019 EASTING: 1744589.490

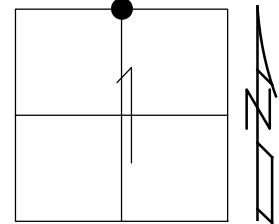
RECORD: P.O.T.
 STA.266+03.88
 FD LG.R.R.SPIKE
 4" DOWN
 8/27/02, MB
 SET MAG/WASHER
 11/25/02, MC
 SET MAG/WASHER
 REF24
 10/30/18, JFO
 10/27/21, JFO



O.D.O.T. DISTRICT 2 SURVEY OFFICE (USE ONLY)

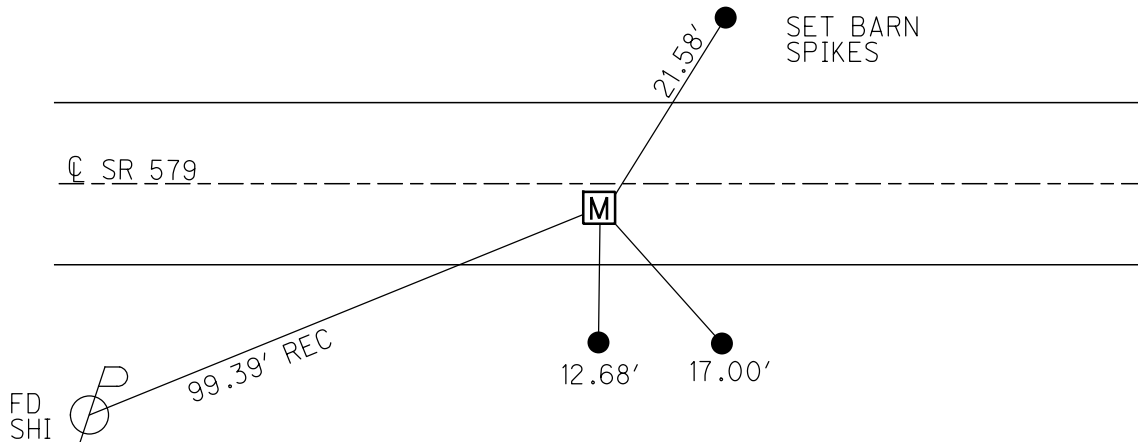
PERSONNEL _____ REFERENCE NO. 26 SHEET 29 OF 36
 NOTES RHOADES DATE 10/7/20 ROUTE SR 579
 H.C. AUBLE WEATHER WINDY COUNTY OTTAWA
 R.C. O'DONNELL TEMP. 62° TOWNSHIP ALLEN
 DWG BY RHOADES PID 95759 SECTION 1
 T 7 N R 13 E

TYPE MONUMENT MONBOX W/1" IPIN
 ON SURFACE - ~~BELOW~~ ON
 OFFSET ☉ PAVEMENT 3.4' ~~±~~ : RT
8.4' TO RT EDGE PAVEMENT
 STATION: 290+70.39



HORZ.DATUM: NAD83 2011 GEOID: NAVD88 2012A
 GRID: NORTHING: 706686.622 EASTING: 1747083.642

RECORD: P.I.
 STA.290+98.55
 Δ= 00°06' RT
 FD MONBOX
 W/1" IPIN
 8/27/02, MB
 FD MONBOX
 W/ 1" IPIN
 POOR CONDITION
 REF26
 11/5/18, JFO
 FD NEW MONBOX
 W/1" IPIN
 NEWREF26
 10/27/21, JFO



O.D.O.T. DISTRICT 2 SURVEY OFFICE (USE ONLY)

PERSONNEL _____ REFERENCE NO. 27 SHEET 30 OF 36

NOTES RHOADES DATE 10/7/20 ROUTE SR 579

H.C. AUBLE WEATHER WINDY COUNTY OTTAWA

R.C. O'DONNELL TEMP. 62° TOWNSHIP ALLEN

DWG BY RHOADES PID 95759 SECTION 1

T 7 N R 13 E

TYPE MONUMENT MONBOX W/5/8" IPIN

ON SURFACE - ~~BELOW~~ ON _____

OFFSET C PAVEMENT 3.1' ~~LT~~ : RT

- TO - EDGE PAVEMENT

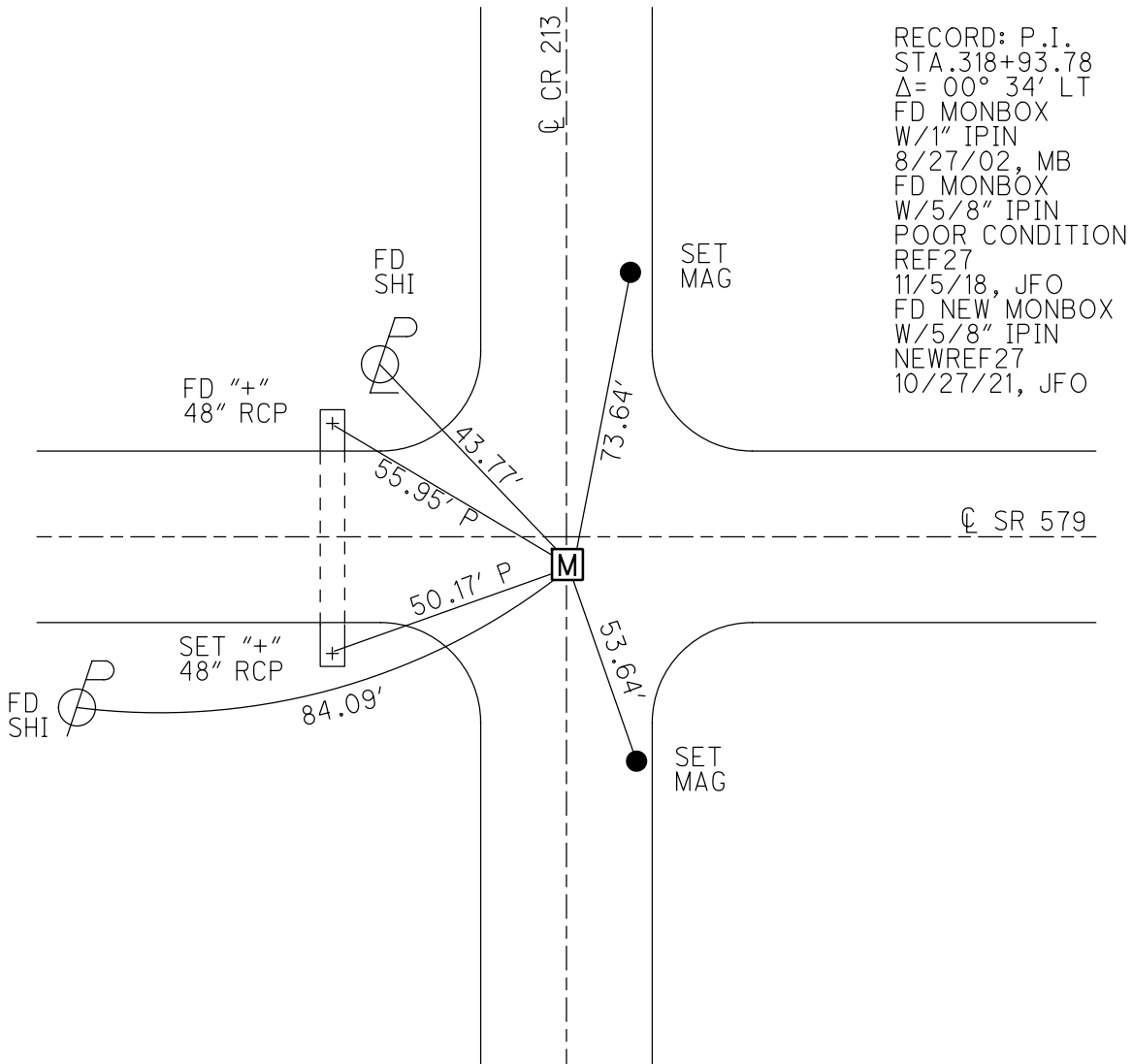
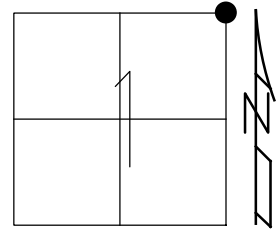
STATION: 318+65.70

HORZ. DATUM: NAD83 2011

GEOID: NAVD88 2012A

GRID: NORTHING: 706670.112

EASTING: 1749878.930



O.D.O.T. DISTRICT 2 SURVEY OFFICE (USE ONLY)

PERSONNEL _____ REFERENCE NO. 28 SHEET 31 OF 36

NOTES RHOADES DATE 10/7/20 ROUTE SR 579

H.C. AUBLE WEATHER WINDY COUNTY OTTAWA

R.C. O'DONNELL TEMP. 62° TOWNSHIP BENTON

DWG BY RHOADES PID 95759 SECTION 6

T 7 N R 14 E

TYPE MONUMENT MAG/WASHER

ON SURFACE - ~~BELOW~~ ON _____

OFFSET \varnothing PAVEMENT 7.1' ~~LT~~ : RT

4.8' TO RT EDGE PAVEMENT

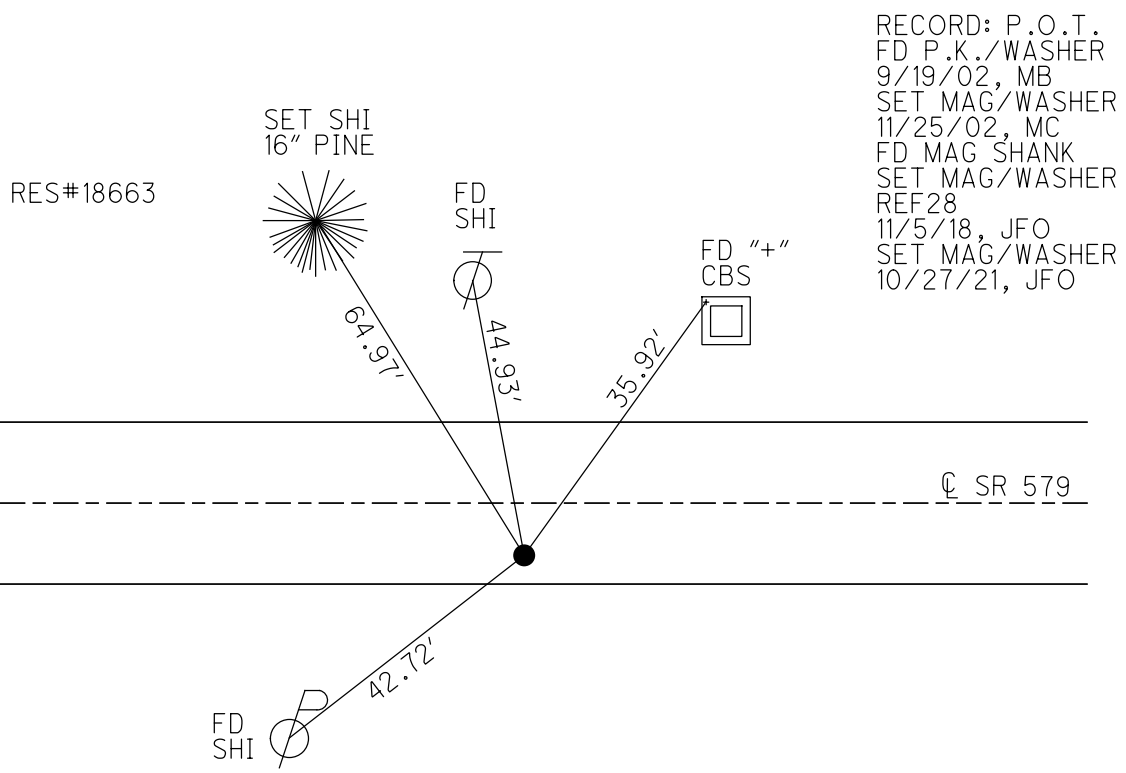
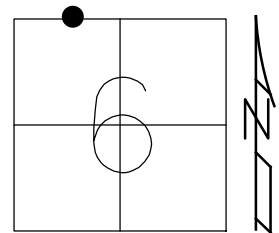
STATION: 337+72.02

HORZ.DATUM: NAD83 2011

GEOID: NAVD88 2012A

GRID: NORTHING: 706677.736

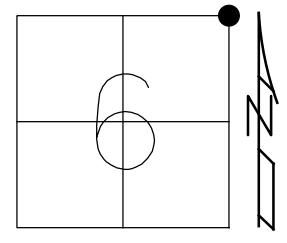
EASTING: 1751785.229



O.D.O.T. DISTRICT 2 SURVEY OFFICE (USE ONLY)

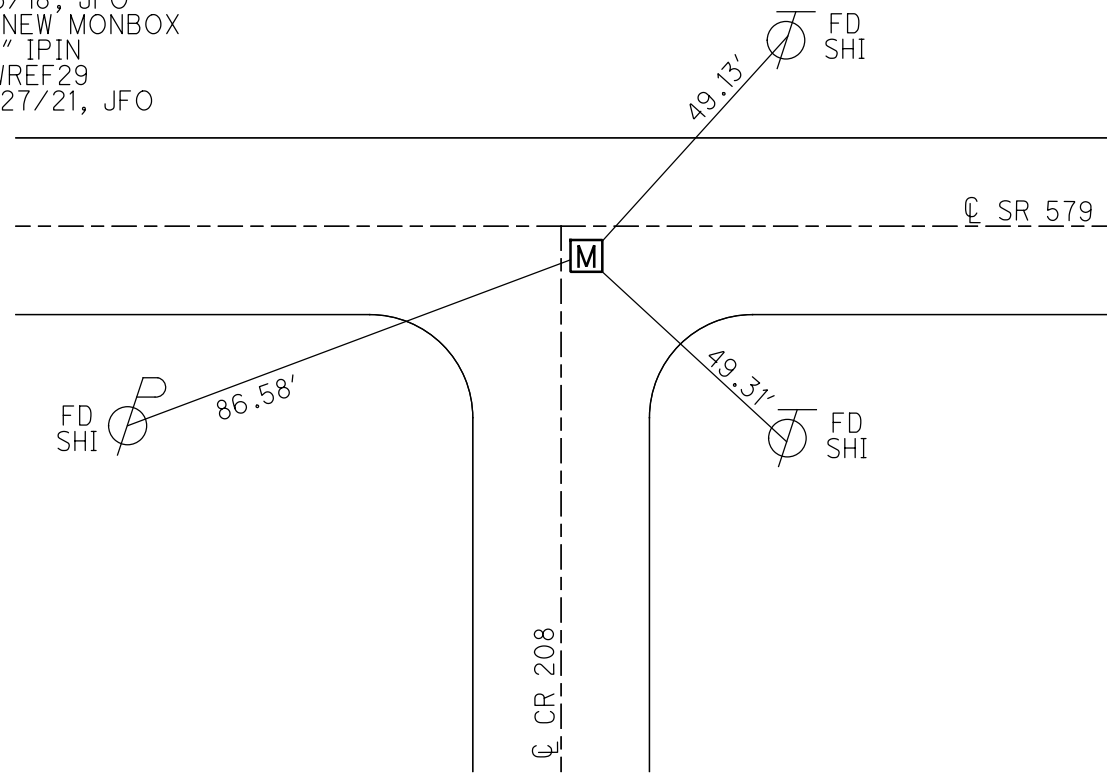
PERSONNEL _____ REFERENCE NO. 29 SHEET 32 OF 36
 NOTES RHOADES DATE 10/7/20 ROUTE SR 579
 H.C. AUBLE WEATHER WINDY COUNTY OTTAWA
 R.C. O'DONNELL TEMP. 62° TOWNSHIP BENTON
 DWG BY RHOADES PID 95759 SECTION 6
 T 7 N R 14 E

TYPE MONUMENT MONBOX
 ON SURFACE - ~~BELOW~~ ON
 OFFSET \varnothing PAVEMENT 4.3' ~~LT~~ : RT
15.7' TO LT EDGE PAVEMENT
 STATION: 370+57.00



HORIZ.DATUM: NAD83 2011 GEOID: NAVD88 2012A
 GRID: NORTHING: 706691.193 EASTING: 1755070.242

RECORD: P.I.
 STA.370+86.08
 $\Delta = 00^\circ 02' \text{ LT}$
 FD MONBOX
 W/1" IPIN
 8/27/02, MB
 FD MONBOX
 POOR CONDITION
 SHOT TOP LID
 W/TIES X
 REF29
 11/5/18, JFO
 FD NEW MONBOX
 W/1" IPIN
 NEWREF29
 10/27/21, JFO



O.D.O.T. DISTRICT 2 SURVEY OFFICE (USE ONLY)

PERSONNEL _____ REFERENCE NO. 30 SHEET 33 OF 36

NOTES RHOADES DATE 10/7/20 ROUTE SR 579
 H.C. AUBLE WEATHER WINDY COUNTY OTTAWA
 R.C. O'DONNELL TEMP. 62° TOWNSHIP BENTON
 SECTION 31

DWG BY RHOADES PID 95759 T 8 N R 14 E

TYPE MONUMENT MONBOX W/1" IPIN

ON SURFACE - ~~BELOW~~ ON _____

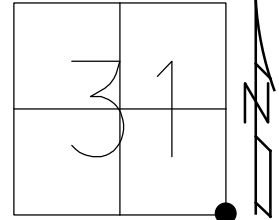
OFFSET \odot PAVEMENT 3.3' ~~LT~~ : RT

8.1' TO RT EDGE PAVEMENT

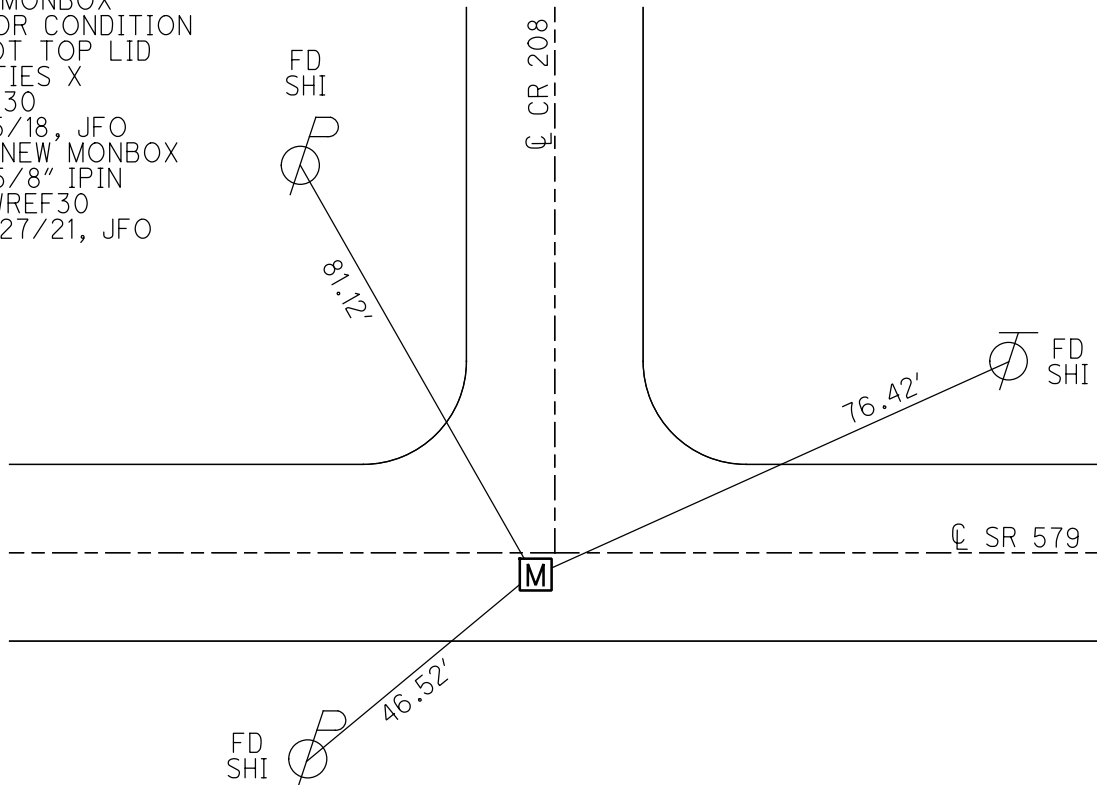
STATION: 373+39.62

HORZ. DATUM: NAD83 2011 GEOID: NAVD88 2012A

GRID: NORTHING: 706692.494 EASTING: 1755352.733



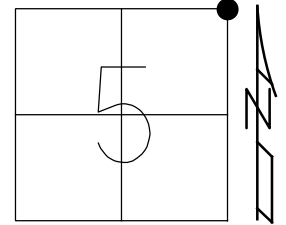
RECORD: P.I.
 STA. 373+68.65
 $\Delta = 00^\circ 12' \text{ LT}$
 FD MONBOX
 W/1" IPIN
 8/27/02, MB
 FD MONBOX
 POOR CONDITION
 SHOT TOP LID
 W/TIES X
 REF30
 11/5/18, JFO
 FD NEW MONBOX
 W/5/8" IPIN
 NEWREF30
 10/27/21, JFO



O.D.O.T. DISTRICT 2 SURVEY OFFICE (USE ONLY)

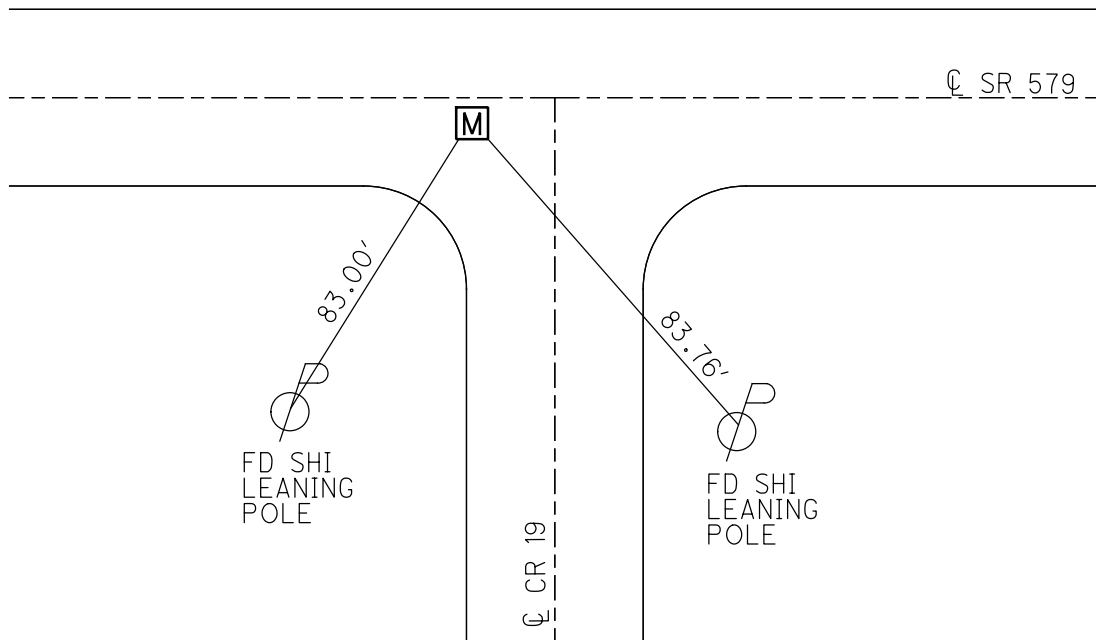
PERSONNEL _____ REFERENCE NO. 32 SHEET 34 OF 36
 NOTES RHOADES DATE 10/7/20 ROUTE SR 579
 H.C. AUBLE WEATHER WINDY COUNTY OTTAWA
 R.C. O'DONNELL TEMP. 62° TOWNSHIP BENTON
 DWG BY RHOADES PID 95759 SECTION 5
 T 7 N R 14 E

TYPE MONUMENT MONBOX
 ON SURFACE - ~~BELOW~~ ON
 OFFSET CL PAVEMENT 2.6' ~~±~~ : RT
13.7' TO LT EDGE PAVEMENT
 STATION: 424+49.01



HORZ.DATUM: NAD83 2011 GEOID: NAVD88 2012A
 GRID: NORTHING: 706733.915 EASTING: 1760461.942

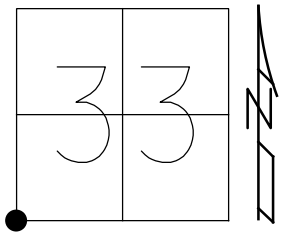
RECORD: P.I.
 STA.424+78.46
 Δ= 00°20' RT
 FD MONBOX
 W/5/8" IPIN
 8/27/02, MB
 FD MONBOX
 POOR CONDITION
 SHOT TOP LID
 REF32
 11/5/18, JFO
 FD NEW MONBOX
 W/1" IPIN
 NEWREF32
 10/27/21, JFO



O.D.O.T. DISTRICT 2 SURVEY OFFICE (USE ONLY)

PERSONNEL _____ REFERENCE NO. 33 SHEET 35 OF 36
 NOTES RHOADES DATE 10/7/20 ROUTE SR 579
 H.C. AUBLE WEATHER SUNNY COUNTY OTTAWA
 R.C. O'DONNELL TEMP. 64° TOWNSHIP BENTON
 DWG BY RHOADES PID 95759 SECTION 33
 T 8 N R 14 E

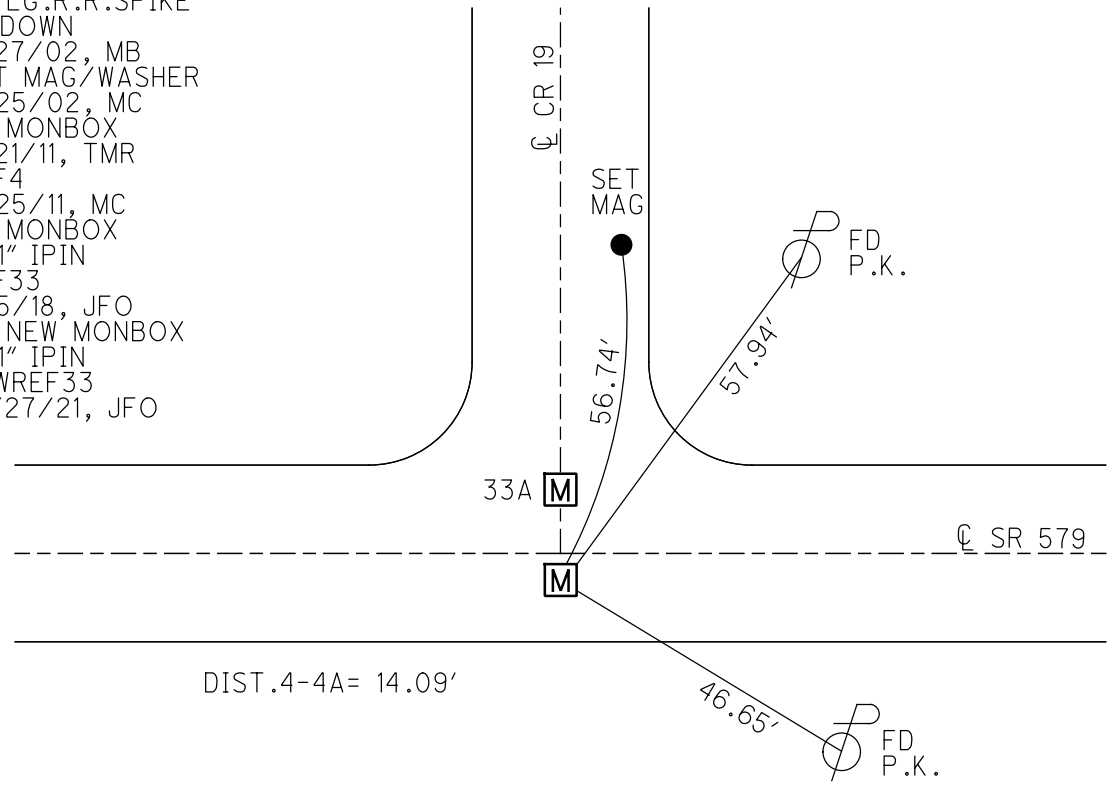
TYPE MONUMENT MONBOX W/1" IPIN
 ON SURFACE - ~~BELOW~~ ON
 OFFSET Q PAVEMENT 3.6' ~~LT~~ : RT
- TO - EDGE PAVEMENT
 STATION: 426+20.87



HORZ.DATUM: NAD83 2011 GEOID: NAVD88 2012A
 GRID: NORTHING: 706733.851 EASTING: 1760633.876

RECORD: P.I.
 STA.426+50.40
 Δ= 00°09' RT
 FD P.K.SHANK
 ATOP R.R.SPIKE
 1/4/83, CRONIN
 FD LG.R.R.SPIKE
 4" DOWN
 8/27/02, MB
 SET MAG/WASHER
 11/25/02, MC
 FD MONBOX
 6/21/11, TMR
 REF4
 11/25/11, MC
 FD MONBOX
 W/1" IPIN
 REF33
 11/5/18, JFO
 FD NEW MONBOX
 W/1" IPIN
 NEWREF33
 10/27/21, JFO

NOTE: OTT 2 REF 4

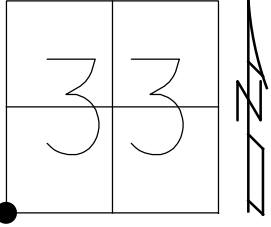


O.D.O.T. DISTRICT 2 SURVEY OFFICE (USE ONLY)

PERSONNEL _____ REFERENCE NO. 33 A SHEET 36 OF 36
 NOTES RHOADES DATE 10/7/20 ROUTE SR 579
 H.C. AUBLE WEATHER SUNNY COUNTY OTTAWA
 R.C. O'DONNELL TEMP. 64° TOWNSHIP BENTON
 DWG BY RHOADES PID 95759 SECTION 33
 T 8 N R 14 E

TYPE MONUMENT MONBOX W/1" IPIN
 ON SURFACE - ~~BELOW~~ ON _____
 OFFSET $\frac{C}{E}$ PAVEMENT 10.4' LT : ~~RT~~
 - TO - EDGE PAVEMENT
 STATION: 426+24.46

HORZ.DATUM: NAD83 2011 GEOID: NAVD88 2012A
 GRID: NORTHING: 706747.984 EASTING: 1760634.039



RECORD: P.I.
 STA.426+54.40
 STA.68+95.30
 SR 2
 FD P.K.SHANK
 ATOP R.R.SPIKE
 1/4/83, CRONIN
 FD MONBOX
 6/21/11, TMR
 REFA4
 11/25/11, MC
 FD MONBOX
 W/1" IPIN
 REFA33
 11/5/18, JFO
 FD NEW MONBOX
 W/1" IPIN
 NEWREFA33
 10/27/21, JFO

NOTE: OTT 2 REF 4A

