

O.D.O.T. DISTRICT 2 SURVEY OFFICE (USE ONLY)

PERSONNEL \_\_\_\_\_ REFERENCE NO. 1 SHEET 2 OF 36

NOTES RHOADES DATE 10/5/20 ROUTE SR 579  
 H.C. AUBLE WEATHER SUNNY COUNTY OTTAWA  
 R.C. O'DONNELL TEMP. 44° TOWNSHIP ALLEN  
 SECTION 6

DWG BY RHOADES PID 95759 T 7 N R 13 E

TYPE MONUMENT P.K./WASHER

ON SURFACE - ~~BELOW~~ ON \_\_\_\_\_

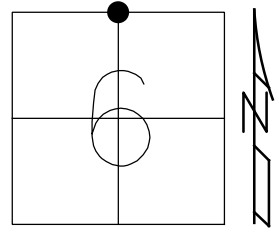
OFFSET ☐ PAVEMENT 0.5' ~~±~~ : RT

11.3' TO RT EDGE PAVEMENT

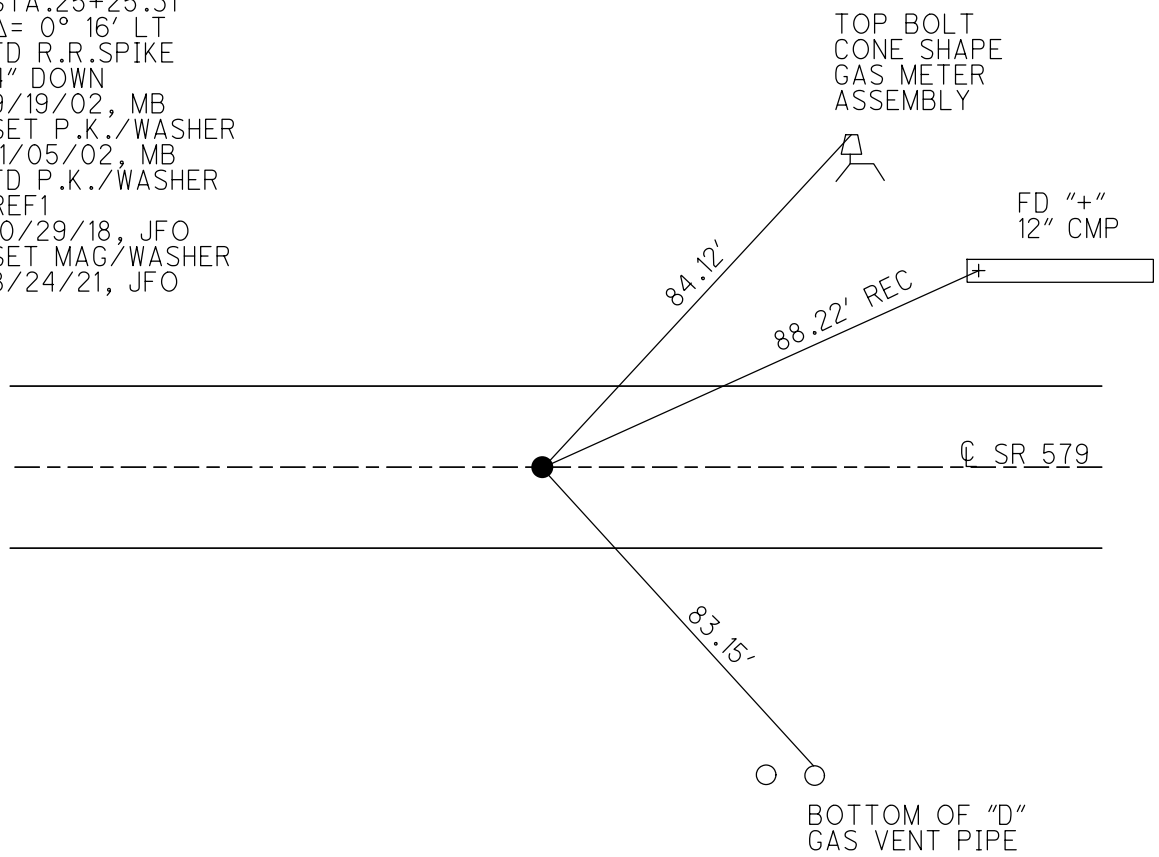
STATION: 25+31.18

HORZ.DATUM: NAD83 2011 GEOID: NAVD88 2012A

GRID: NORTHING: 706411.510 EASTING: 1720569.388



RECORD: P.I.  
 STA. 25+25.31  
 $\Delta = 0^\circ 16' \text{ LT}$   
 FD R.R.SPIKE  
 4" DOWN  
 9/19/02, MB  
 SET P.K./WASHER  
 11/05/02, MB  
 FD P.K./WASHER  
 REF1  
 10/29/18, JFO  
 SET MAG/WASHER  
 8/24/21, JFO



# O.D.O.T. DISTRICT 2 SURVEY OFFICE

PERSONNEL

REFERENCE NO. 1

SHEET 2 OF 34

NOTES BARNHISEL

H.C. CANTERBURY

R.C. BARNHISEL

DATE 9-19-02

WEATHER SUNNY

TEMP. + 80°

ROUTE S.R. 579

COUNTY OTTAWA

TOWNSHIP ALLEN

SECTION 6

T. 7 N. R. 13 E.

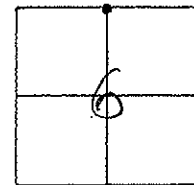
TYPE MONUMENT R.R. SPIKE

~~ON SURFACE~~ - BELOW 4" DOWN

~~LEFT - & PAW'T. - RIGHT~~ 0.5' RT

11.3 TO RT EDGE PAVEMENT

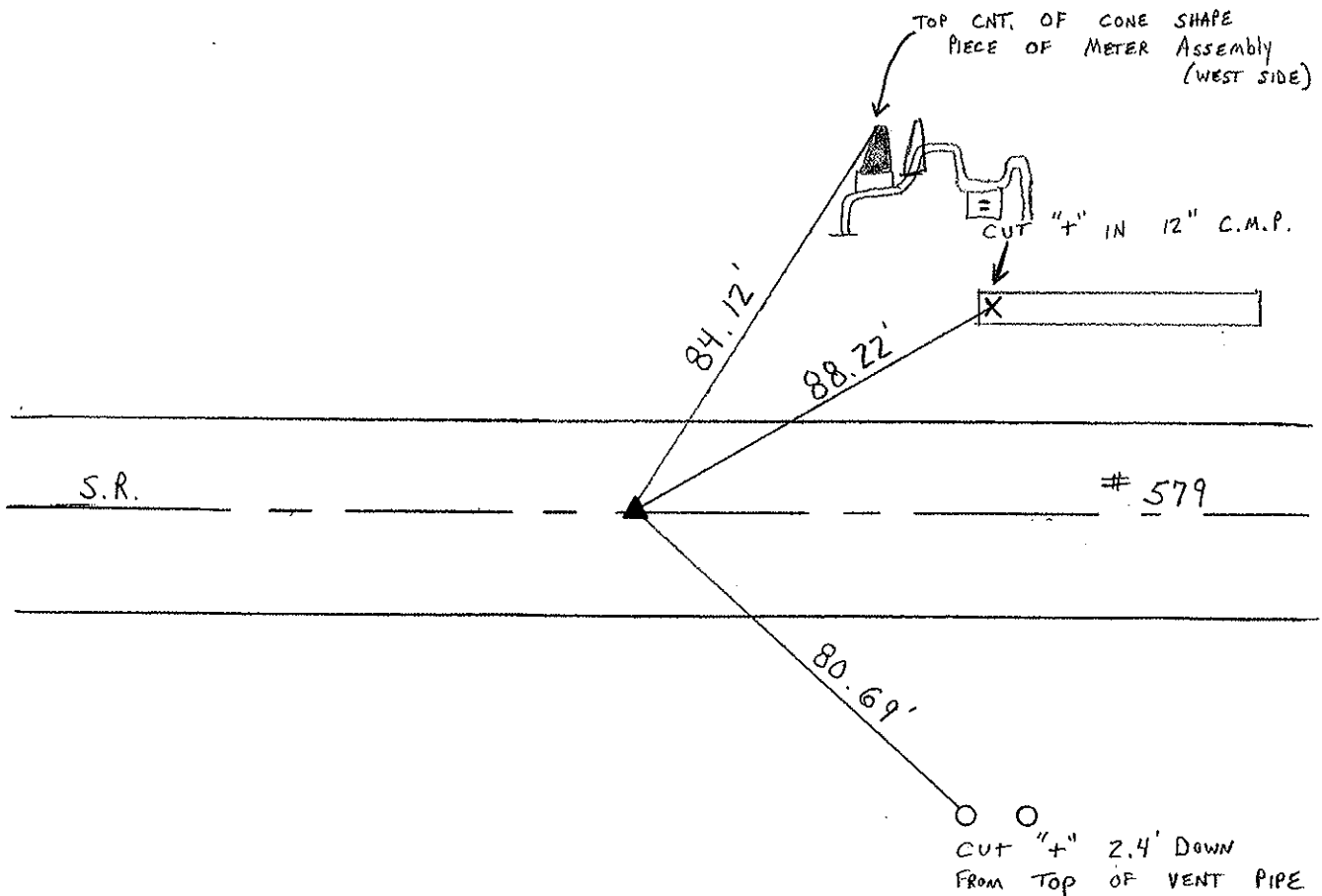
S.L.M. 0.48 25+31



RECORD: P.I. 25+25.31

A = 0° 16' LT.

RESET P.K/WASHER  
11-05-02  
M.B.



O.D.O.T. DISTRICT 2 SURVEY OFFICE

PERSONNEL \_\_\_\_\_

REFERENCE NO. 1

SHEET 2 OF \_\_\_\_\_

NOTES CRONIN

H.C. \_\_\_\_\_

DATE 9-20-77

ROUTE SR 579

R.C. \_\_\_\_\_

WEATHER \_\_\_\_\_

COUNTY OTTAWA

\_\_\_\_\_

TEMP. \_\_\_\_\_

TOWNSHIP ALLEN

\_\_\_\_\_

SECTION 6

T 7 N R 13 E

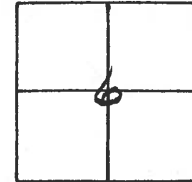
TYPE MONUMENT RR SPIKE

ON SURFACE - BELOW \_\_\_\_\_

LEFT - & PAV'T. - RIGHT \_\_\_\_\_

\_\_\_\_\_ TO \_\_\_\_\_ EDGE PAVEMENT

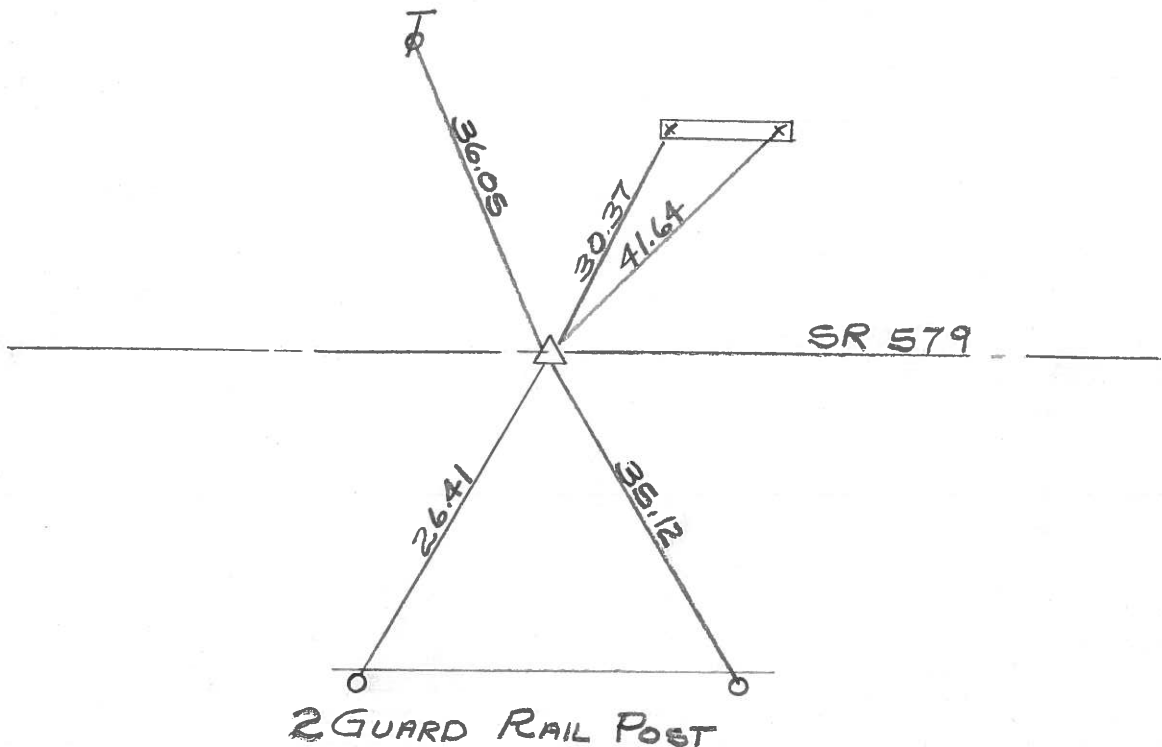
S.L.M. 0.48



PI 25+25.31

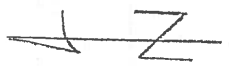
$\Delta = 0^{\circ} 16' \text{ LT}$

RESET PK NAIL

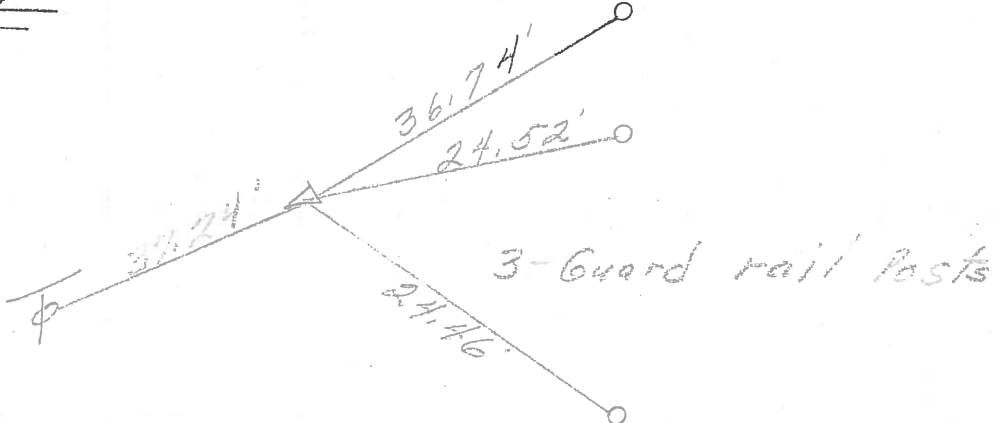


DRAWN BY  
WM. LUCE  
5-7-85

PERSONNEL	TITLE	PERSONNEL	TITLE	COUNTY	DATE	WEATHER	TEMP.
<u>Schneider</u>		<u>Vinson</u>		<u>Ottawa</u>	<u>9-17-71</u>	<u>Fair</u>	<u>60°</u>
<u>Masser</u>				S. R. <u>579</u>			
<u>Barbour</u>				SEC. <u>6 &amp; 31</u>			
<u>Geyman</u>							
DESCRIPTION	<u>Allen Twp.</u>						JOB NO.

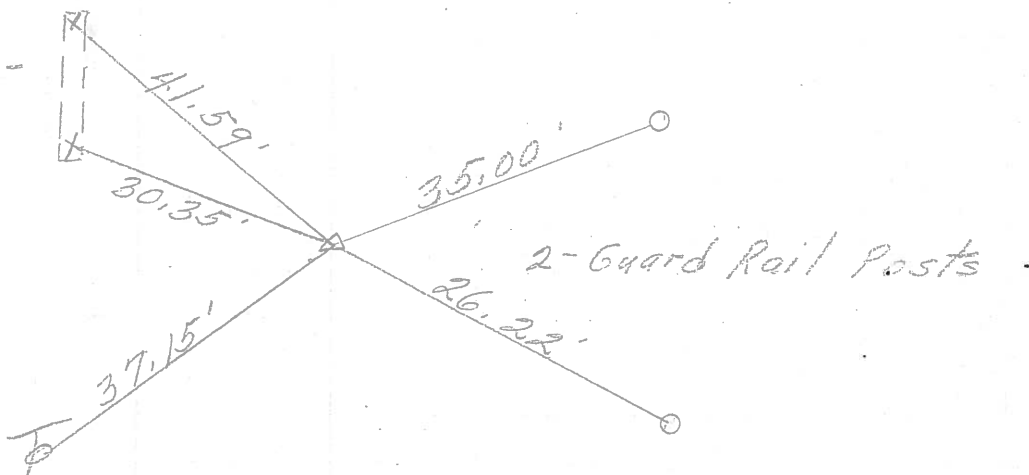


P.I. 2  
 51+65.40  
 R.R. spk. on top  
 $\Delta = 0^{\circ}09'20''$  Rt.



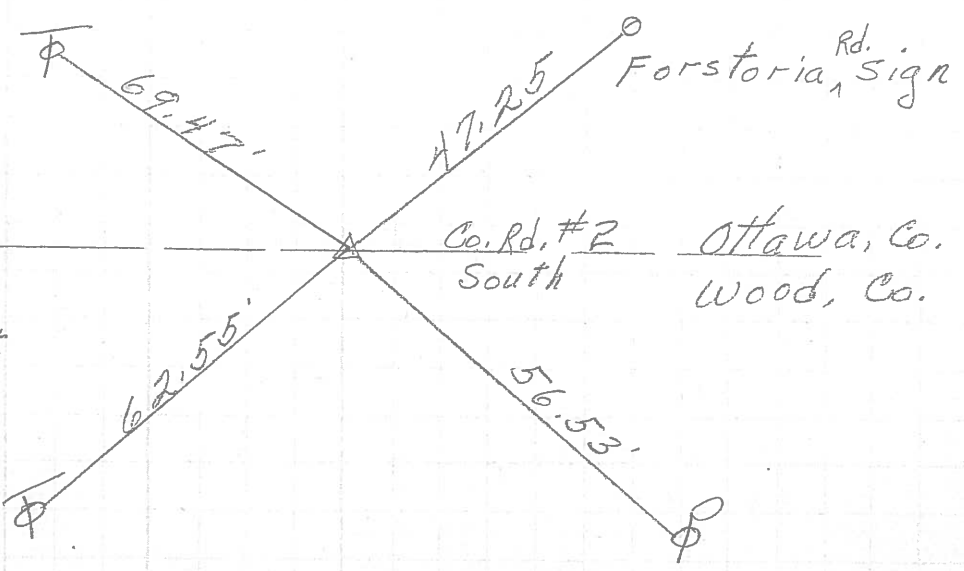
② "X" on concrete tile

P.I. 1  
 25+25.31  
 R.R. spk. on top  
 $\Delta = 0^{\circ}16'$  Lt.



①

P.I.  $\emptyset$   
 131+2240 BK. =  
 0+00  
 R. R. spk. on top  
 $\Delta = 0^{\circ}55'30''$  Lt.



PERSONNEL	TITLE	PERSONNEL	TITLE
Schneider		Pot's	
Masser			
Barbour			
Reynolds			

COUNTY Ottawa DATE 9-16-68  
 S. R. 579 WEATHER Fair  
 SEC. Woodbine - East TEMP. 80°

DESCRIPTION Ties for Center Point LEFT CENTER LINE RIGHT JOB NO.

