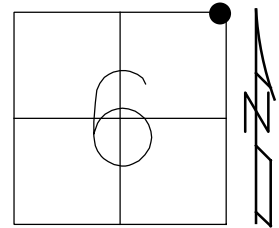


O.D.O.T. DISTRICT 2 SURVEY OFFICE (USE ONLY)

PERSONNEL _____ REFERENCE NO. 2 A SHEET 3 OF 36
 NOTES RHOADES DATE 10/5/20 ROUTE SR 579
 H.C. AUBLE WEATHER SUNNY COUNTY OTTAWA
 R.C. O'DONNELL TEMP. 44° TOWNSHIP ALLEN
 DWG BY RHOADES PID 95759 SECTION 6
 T 7 N R 13 E

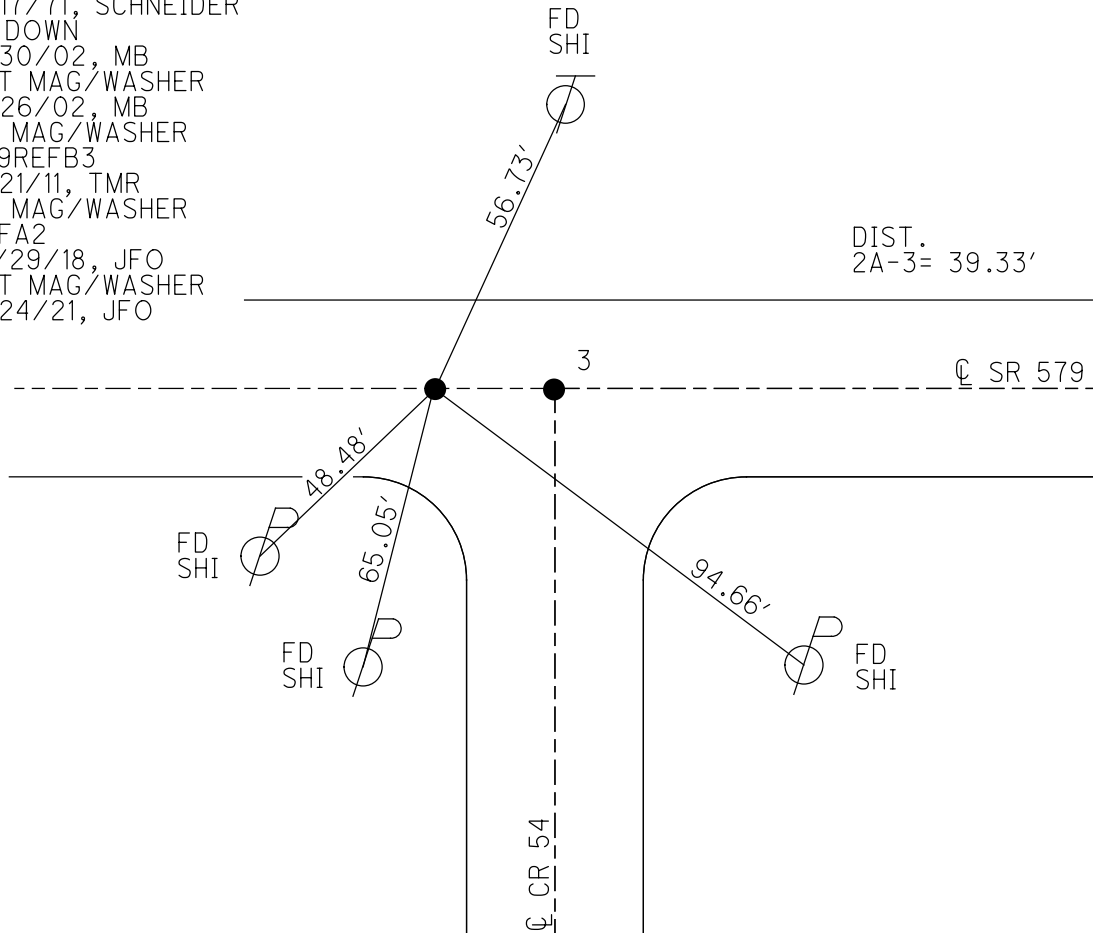
TYPE MONUMENT MAG/WASHER
 ON SURFACE - ~~BELOW~~ ON
 OFFSET ☉ PAVEMENT ON LT : RT
11.6' TO LT EDGE PAVEMENT
 STATION: 51+65.33



HORZ. DATUM: NAD83 2011 GEOID: NAVD88 2012A
 GRID: NORTHING: 706468.569 EASTING: 1723202.920

RECORD: P.I.
 STA. 51+65.4
 $\Delta = 0^{\circ}09' 20''$ RT
 FD R.R. SPIKE
 9/17/71, SCHNEIDER
 4" DOWN
 8/30/02, MB
 SET MAG/WASHER
 11/26/02, MB
 FD MAG/WASHER
 579REFB3
 6/21/11, TMR
 FD MAG/WASHER
 REFA2
 10/29/18, JFO
 SET MAG/WASHER
 8/24/21, JFO

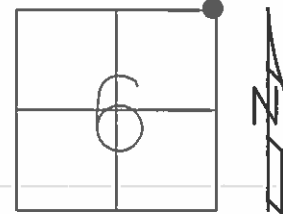
DIST.
 2A-3 = 39.33'



O.D.O.T. DISTRICT 2 SURVEY OFFICE (USE ONLY)

PERSONNEL	REFERENCE NO.	<u>2 A</u>	SHEET	<u>1</u>	OF	<u>12</u>
NOTES	<u>FINGER</u>	DATE	<u>6/21/11</u>	ROUTE	<u>SR 579</u>	
H.C.	<u>ROUSOS</u>	WEATHER	<u>SUNNY</u>	COUNTY	<u>OTTAWA</u>	
R.C.	<u>FINGER</u>	TEMP.	<u>91°</u>	TOWNSHIP	<u>ALLEN</u>	
				SECTION	<u>6</u>	
				<u>T 7 N</u>	<u>R 13 E</u>	

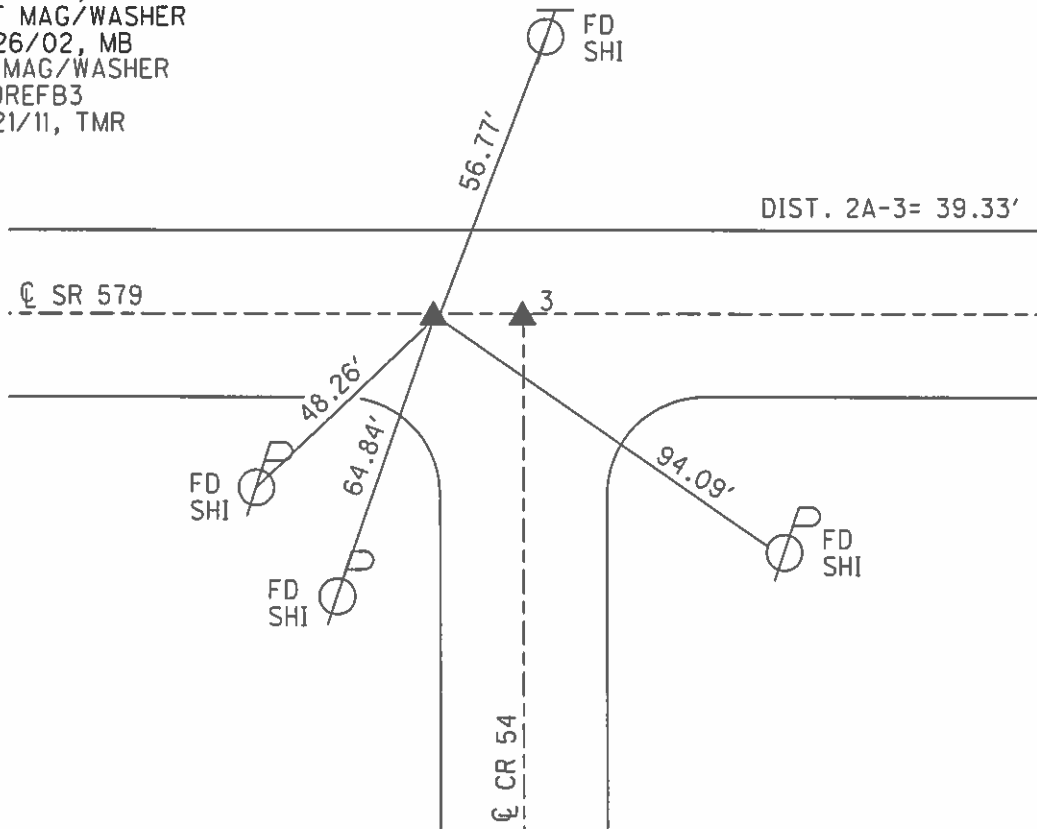
TYPE MONUMENT MAG/WASHER
 ON SURFACE - ~~BELOW~~ ON _____
 LEFT - ℄ PAV'T - RIGHT ON _____
11.6' TO LT EDGE PAVEMENT
 S.L.M. 51+65.40



GRID: NORTHING: 706468.573 EASTING: 1723202.756

RECORD:
 STA. 51+65.4
 $\Delta = 0^\circ 09' 20''$ RT
 FD R.R.SPIKE
 9/17/71, SCHNEIDER
 FD R.R.SPIKE, 4" DOWN
 8/30/02, MB
 SET MAG/WASHER
 11/26/02, MB
 FD MAG/WASHER
 579REFB3
 6/21/11, TMR

DIST:
 3B TO 3 = 5.77'
 3A TO 3 = 5.74'
 3 TO 2A = 39.33'
 2A TO 3B = 39.48'
 2A TO 3A = 39.96'



O.D.O.T. DISTRICT 2 SURVEY OFFICE

PERSONNEL

REFERENCE NO. 2

SHEET 3 OF

NOTES CRONIN

H.C.

R.C.

DATE 9-20-77

WEATHER

TEMP.

ROUTE SR 579

COUNTY OTTAWA

TOWNSHIP ALLEN

SECTION 31

T. & N. R. 13 E

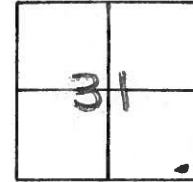
TYPE MONUMENT R.R. SPIKE

ON SURFACE - BELOW

LEFT - PAV'T. - RIGHT

 TO EDGE PAVEMENT

S.L.M. 0.98

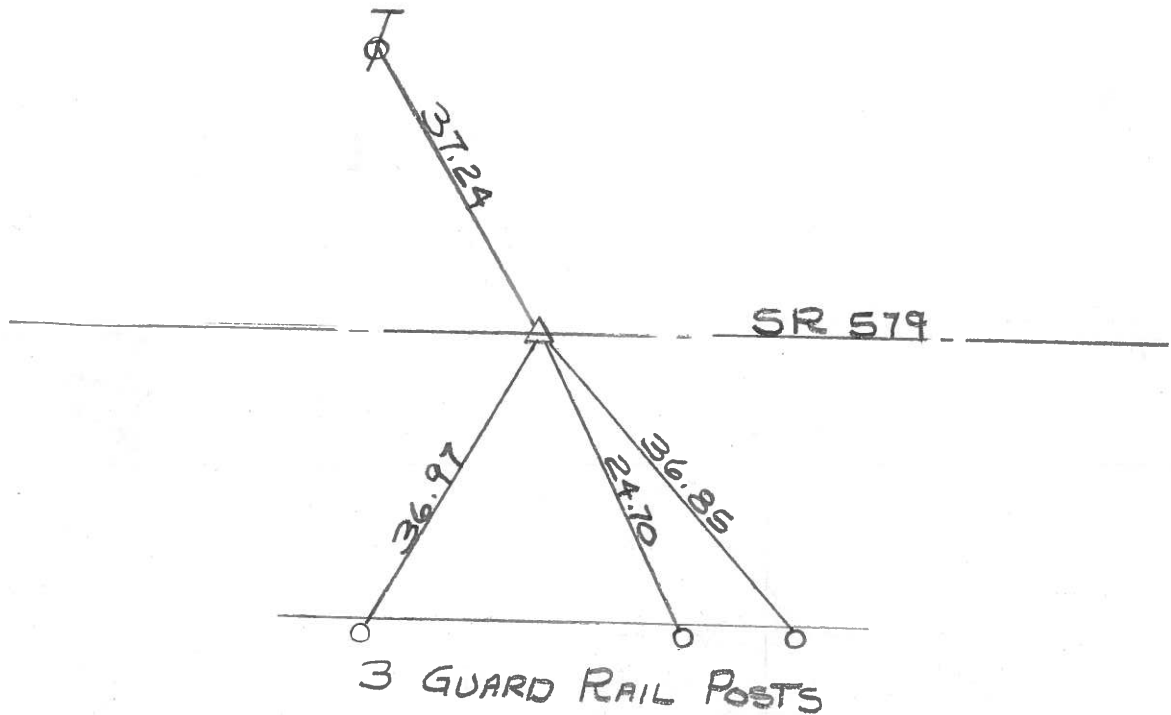


PI 51+65.40

$\Delta = 0^{\circ} 09' 20'' RT$

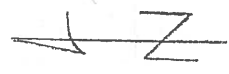
RESET PK NAIL

9-20-77

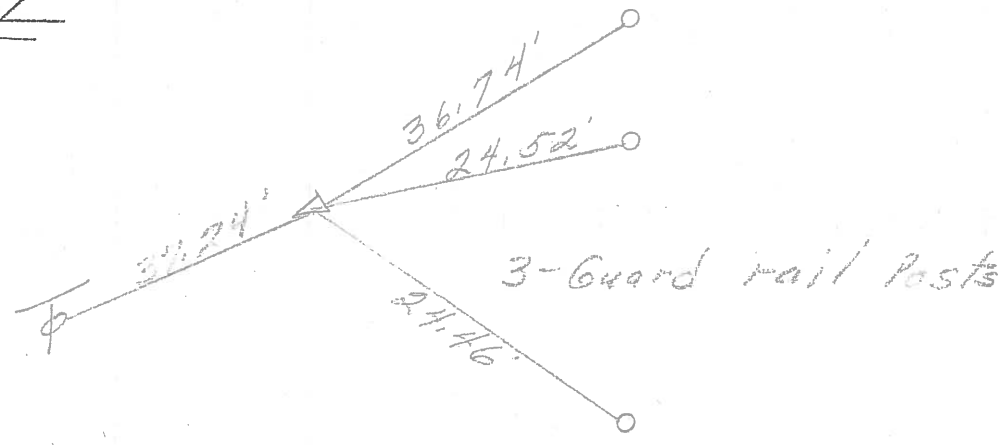


DRAWN BY
WM. LUCE
5-7-85

PERSONNEL	TITLE	PERSONNEL	TITLE	COUNTY	DATE
<u>Schneider</u>		<u>Vinson</u>		<u>Ottawa</u>	<u>9-17-76</u>
<u>Masser</u>				S. R. <u>579</u>	WEATHER <u>Fair</u>
<u>Barbour</u>				SEC. <u>6531</u>	TEMP. <u>60°</u>
<u>Geyman</u>					
DESCRIPTION	<u>Allen Twp.</u>				JOB NO.
	LEFT	CENTER LINE	RIGHT		

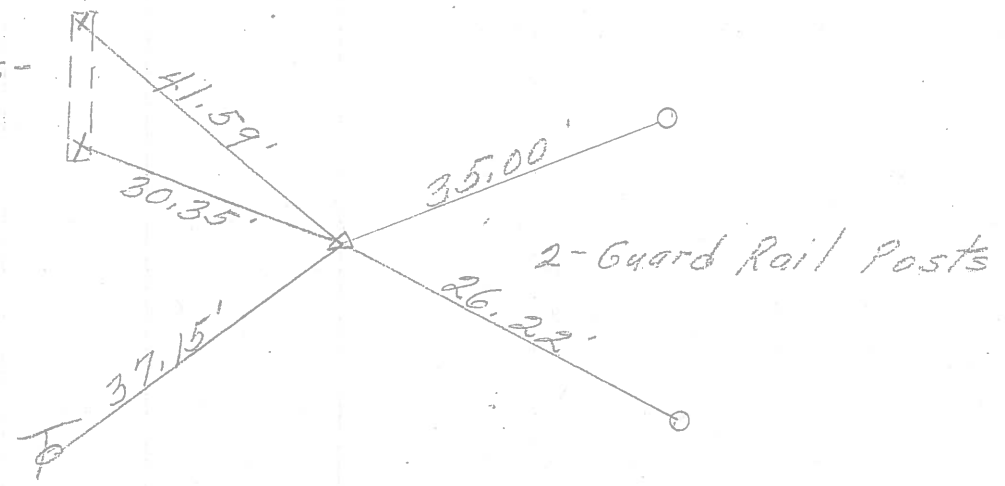


P.I. 2
 51+65.40
 R.R. spk. on top
 $\Delta = 0^{\circ}09'20'' \text{ Rt.}$



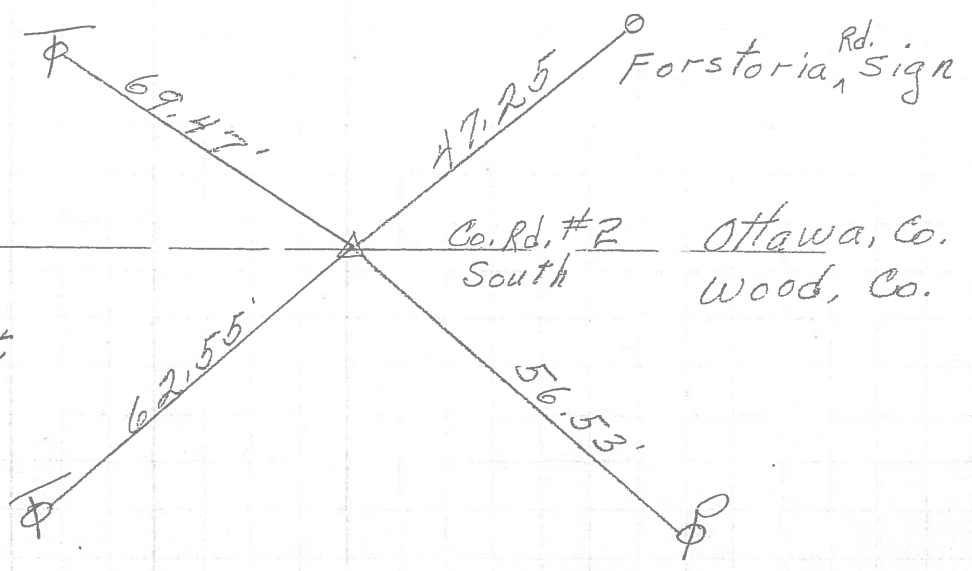
② "X" on concrete tile

P.I. 1
 25+25.31
 R.R. spk. on top
 $\Delta = 0^{\circ}16' \text{ Lt.}$



①

P.I. 0
 131+2240 BK. =
 0+00
 R.R. spk. on top
 $\Delta = 0^{\circ}55'30'' \text{ Lt.}$



PERSONNEL	TITLE	PERSONNEL	TITLE
Schneider		Pot's	
Masser			
Barbour			
Reynolds			

COUNTY Ottawa DATE 9-16-68
 S. R. 579 WEATHER Fair
 SEC. Woodbine - East TEMP. 80°

DESCRIPTION Ties for Center Points LEFT CENTER LINE RIGHT JOB NO.

