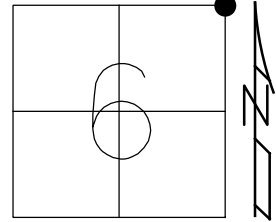


O.D.O.T. DISTRICT 2 SURVEY OFFICE (USE ONLY)

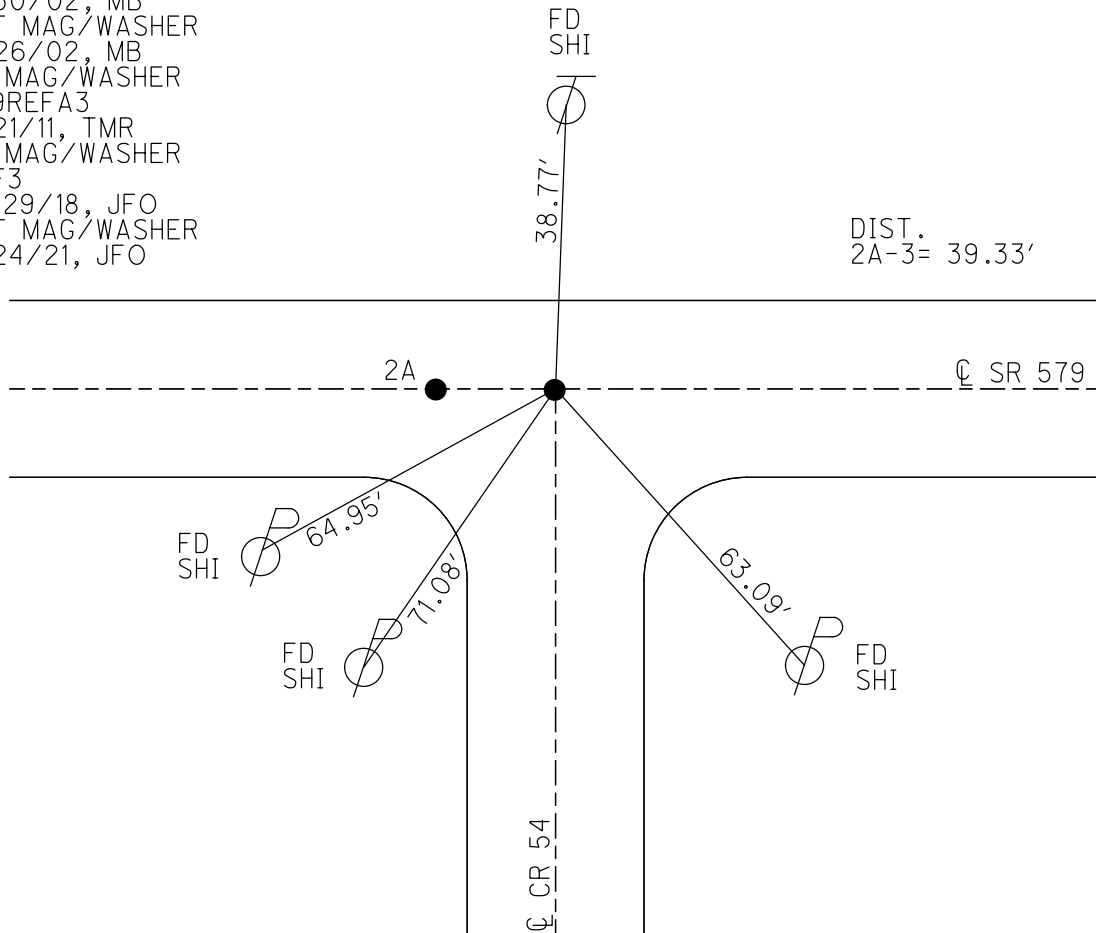
PERSONNEL \_\_\_\_\_ REFERENCE NO. 3 SHEET 4 OF 36  
 NOTES RHOADES DATE 10/5/20 ROUTE SR 579  
 H.C. AUBLE WEATHER SUNNY COUNTY OTTAWA  
 R.C. O'DONNELL TEMP. 44° TOWNSHIP ALLEN  
 DWG BY RHOADES PID 95759 SECTION 6  
 T 7 N R 13 E

TYPE MONUMENT MAG/WASHER  
 ON SURFACE - ~~BELOW~~ ON  
 OFFSET Q PAVEMENT ON LT : RT  
11.6' TO LT EDGE PAVEMENT  
 STATION: 52+04.66



HORZ. DATUM: NAD83 2011 GEOID: NAVD88 2012A  
 GRID: NORTHING: 706469.131 EASTING: 1723242.258

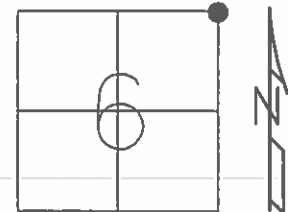
RECORD:  
 FD R.R. SPIKE  
 9/17/71, SCHNEIDER  
 4" DOWN  
 8/30/02, MB  
 SET MAG/WASHER  
 11/26/02, MB  
 FD MAG/WASHER  
 579REFA3  
 6/21/11, TMR  
 FD MAG/WASHER  
 REF3  
 10/29/18, JFO  
 SET MAG/WASHER  
 8/24/21, JFO



O.D.O.T. DISTRICT 2 SURVEY OFFICE (USE ONLY)

PERSONNEL	REFERENCE NO.	<u>3</u>	SHEET	<u>2</u>	OF	<u>12</u>
NOTES	FINGER	DATE	<u>6/21/11</u>	ROUTE	<u>SR 579</u>	
H.C.	<u>ROUSOS</u>	WEATHER	<u>SUNNY</u>	COUNTY	<u>OTTAWA</u>	
R.C.	<u>FINGER</u>	TEMP.	<u>91°</u>	TOWNSHIP	<u>ALLEN</u>	
				SECTION	<u>6</u>	
				T	<u>7</u>	R
					<u>13</u>	E

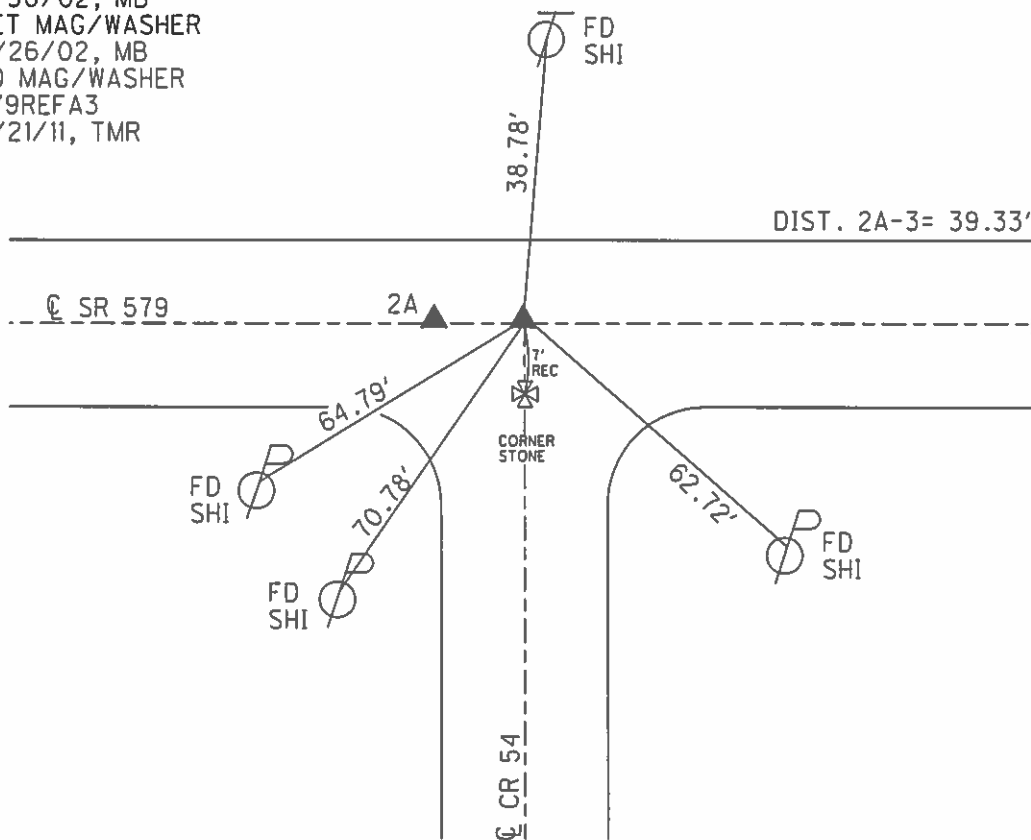
TYPE MONUMENT MAG/WASHER  
 ON SURFACE - ~~BELOW~~ ON  
 LEFT - ☉ PAV'T - RIGHT ON  
11.6' TO LT EDGE PAVEMENT  
 S.L.M. 52+04.73



GRID: NORTHING: 706469.231 EASTING: 1723242.029

RECORD:  
 STA. 52+03.5  
 $\Delta = 0^\circ 09' 20''$  RT  
 FD R.R.SPIKE  
 9/17/71, SCHNEIDER  
 FD R.R.SPIKE, 4" DOWN  
 8/30/02, MB  
 SET MAG/WASHER  
 11/26/02, MB  
 FD MAG/WASHER  
 579REFA3  
 6/21/11, TMR

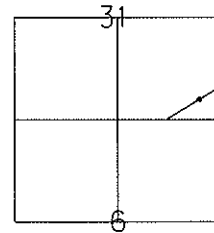
DIST:  
 3B TO 3 = 5.77'  
 3A TO 3 = 5.74'  
 3 TO 2A = 39.33'  
 2A TO 3B = 39.48'  
 2A TO 3A = 39.96'



O.D.O.T. DISTRICT 2 SURVEY OFFICE (Use Only)

PERSONNEL \_\_\_\_\_ REFERENCE NO. ~~1075~~ SHEET \_\_\_\_\_ OF \_\_\_\_\_  
 NOTES Finger \_\_\_\_\_ DATE 6/21/11 3 ROUTE SR. 579  
 H.C. Rousos \_\_\_\_\_ WEATHER Sunny \_\_\_\_\_ COUNTY OTTAWA  
 R.C. Finger \_\_\_\_\_ TEMP. 91°F \_\_\_\_\_ TOWNSHIP ALLEN  
 \_\_\_\_\_ SECTION 6-31  
 \_\_\_\_\_ T 8 N R 13 E

TYPE MONUMENT Mag Nail / Washer  
 ON SURFACE - ~~BELOW~~ Surface  
 LEFT - Q PAV'T - RIGHT Q  
11.6' TO LT EDGE PAVEMENT  
 S.L.M. 0.98 52+07



Grid: Northing: 706469.231 Easting: 1723242.029

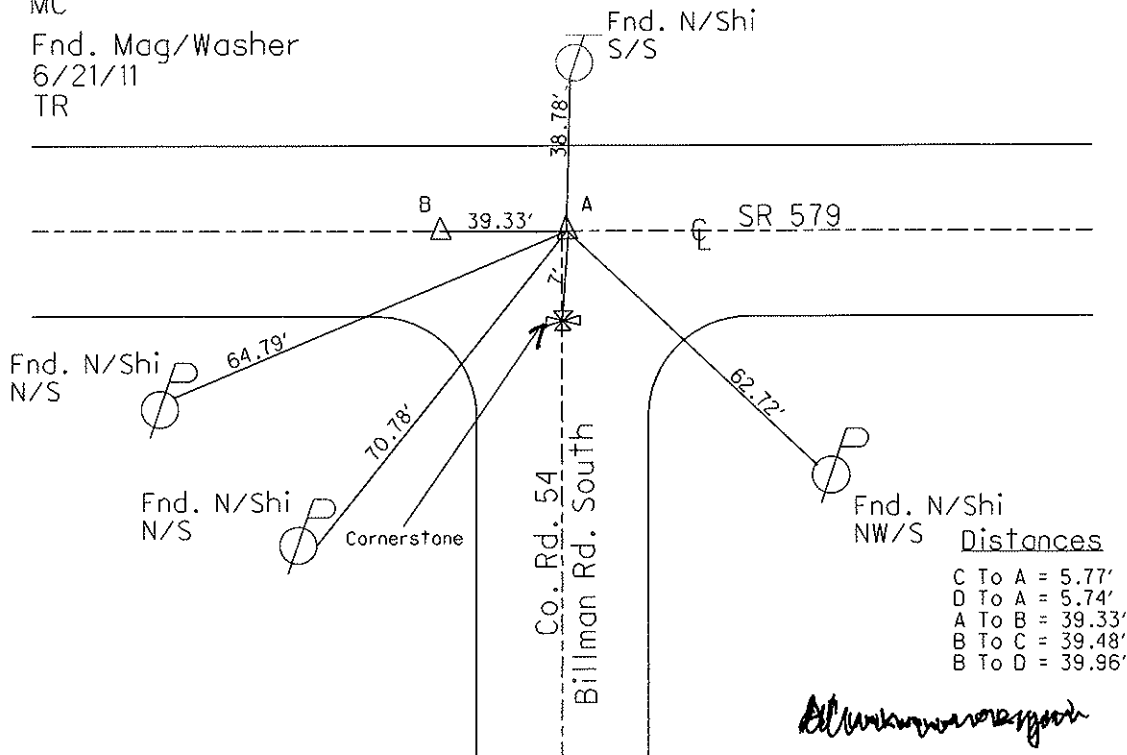
Record = ~~BELOW PAV'T~~ "A"  
 Sta. 51+65.40  
 $\Delta = 0^{\circ} 09' 20''$  RT.

*Handwritten initials*

Sta. 53+03.5  
 RR spk. 4" Down  
 1' East of Q South  
 (co. rd. 54)

Reset Mag Nail / Washer  
 11/26/02  
 MC

Fnd. Mag/Washer  
 6/21/11  
 TR



# O.D.O.T. DISTRICT 2 SURVEY OFFICE

PERSONNEL \_\_\_\_\_

REFERENCE NO. 3

SHEET 3 OF 34

NOTES BARNHISEL Finger

H.C. CANTERBURY ROADS

R.C. BARNHISEL

DATE 6/21/11  
~~8-30-02~~

WEATHER SUNNY ✓

TEMP. +72° 91°

ROUTE S.R. 579

COUNTY OTTAWA

TOWNSHIP ALLEN

SECTION 6-31

T 9 N R 13 E

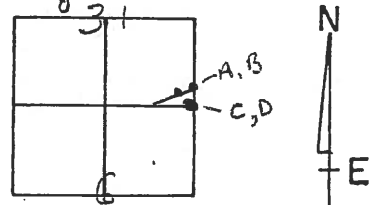
TYPE MONUMENT 2 - R.R. SPIKES

ON SURFACE - BELOW 4" DOWN

LEFT - & PAV'T. - RIGHT ON &

Both 11.6 TO LT. EDGE PAVEMENT

S.L.M. 0.99      A = 52+07      B = 51+67



RECORD: STA 52+03.5 PT. A

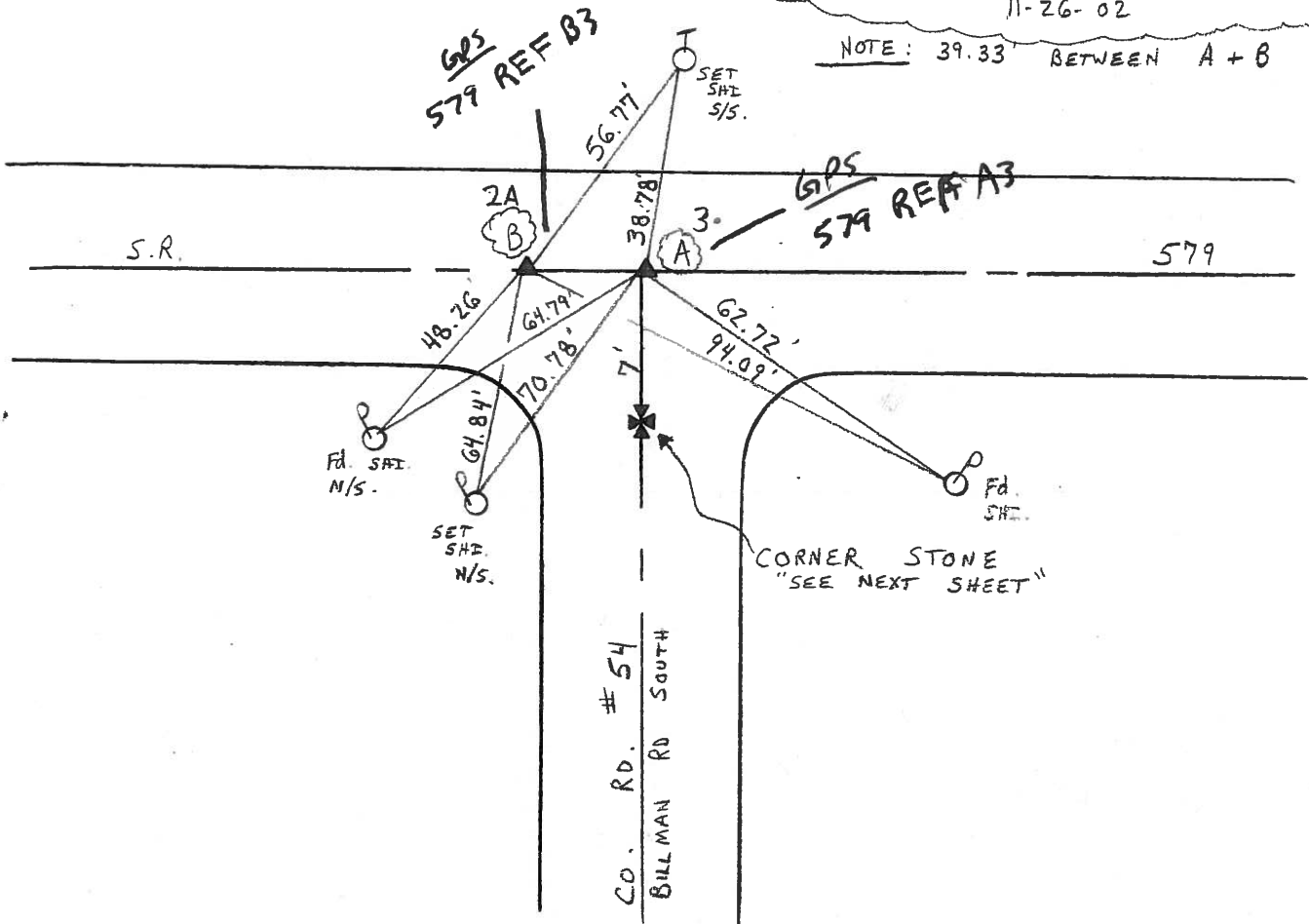
RECORD: STA 51+65.40 PT. B  
Δ = 0° 09' 20" RT

PT "A" ✓ FD  
RESET MAG NAIL/WASHER  
52+07  
ON &  
11.6' LT. ED.  
1' E OF & SOUTH

PT "B" ✓ FD  
RESET MAG NAIL/WASHER  
51+67  
ON &  
11.6' TO LT E.O.P.

11-26-02

NOTE: 39.33 BETWEEN A + B



# O.D.O.T. DISTRICT 2 SURVEY OFFICE

PERSONNEL

REFERENCE NO. 3

SHEET 3 OF 34

NOTES BARNHISEL

H.C. CANTERBURY

R.C. BARNHISEL

DATE 8-30-02

WEATHER SUNNY

TEMP. +72°

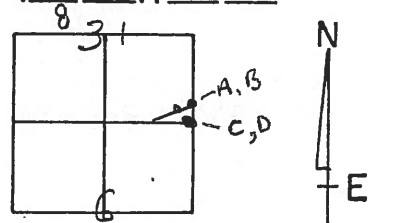
ROUTE S.R. 579

COUNTY OTTAWA

TOWNSHIP ALLEN

SECTION 6-31

T 9 N R 13 E



TYPE MONUMENT 2- R.R. SPIKES

ON SURFACE - BELOW 4" DOWN

LEFT - & PAV'T. - RIGHT ON &

Both 11.6 TO LT. EDGE PAVEMENT

S.L.M. 0.99      A = 52+07      B = 51+67

RECORD: STA 52+03.5 PT. A

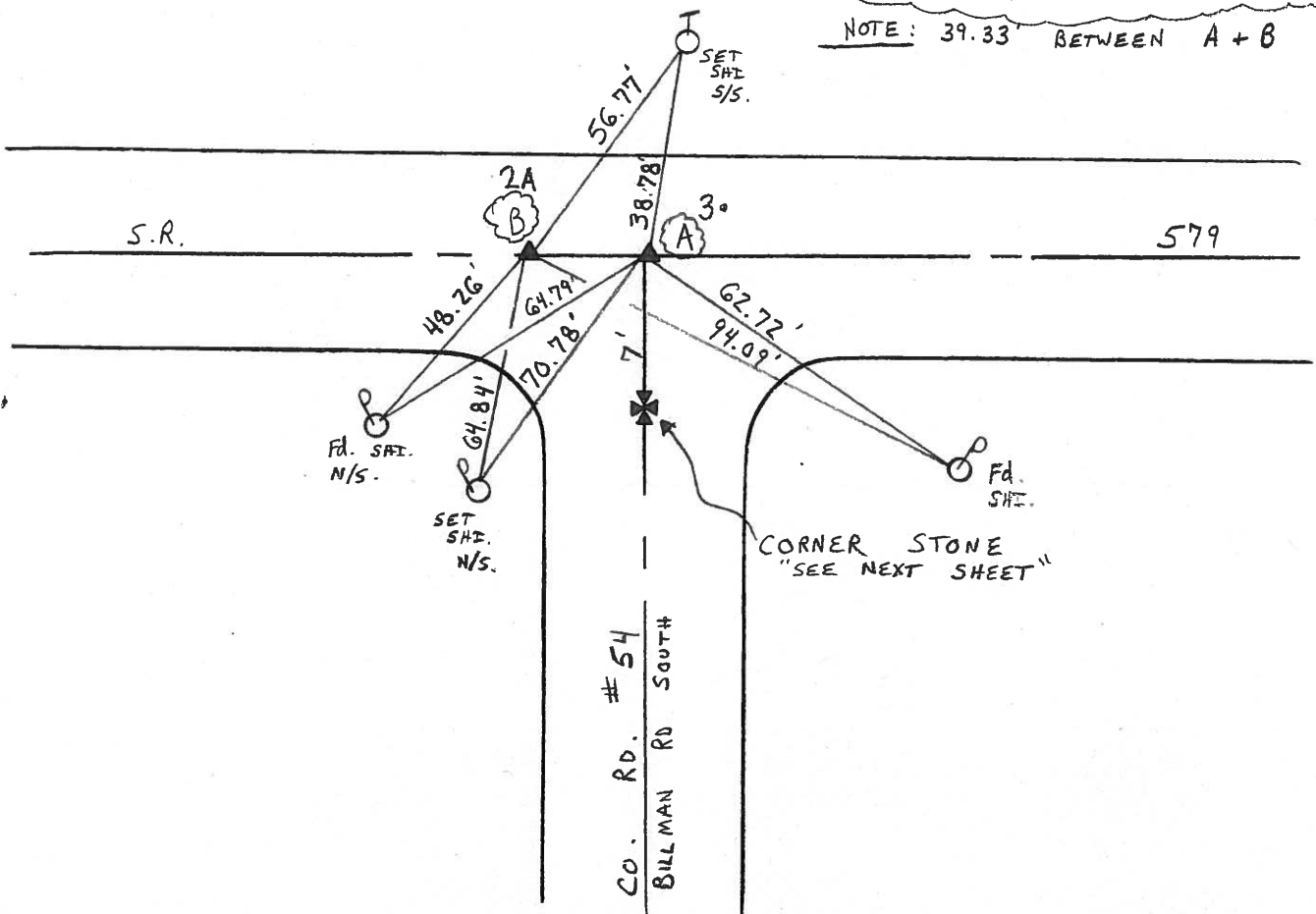
RECORD: STA 51+65.45 PT. B  
 $\Delta = 0^\circ - 09' - 20''$  RT

PT "A"  
 RESET MAG NAIL/WASHER  
52+07  
 ON &  
 11.6' LT. ED.  
 1' E OF & SOUTH

PT "B"  
 RESET MAG NAIL/WASHER  
51+67  
 ON &  
 11.6' TO LT E.o.P.

11-26-02

NOTE: 39.33' BETWEEN A + B



O.D.O.T. DISTRICT 2 SURVEY OFFICE

PERSONNEL \_\_\_\_\_

REFERENCE NO. 3

SHEET 4 OF \_\_\_\_\_

NOTES CRONIN

H.C. \_\_\_\_\_

DATE \_\_\_\_\_

ROUTE SR 597

R.C. \_\_\_\_\_

WEATHER \_\_\_\_\_

COUNTY OTTAWA

\_\_\_\_\_

TEMP. \_\_\_\_\_

TOWNSHIP ALLEN

\_\_\_\_\_

SECTION 6-31

T 9 N R 13 E

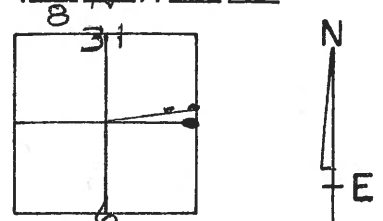
TYPE MONUMENT 2-RR SPIKES

ON SURFACE - BELOW \_\_\_\_\_

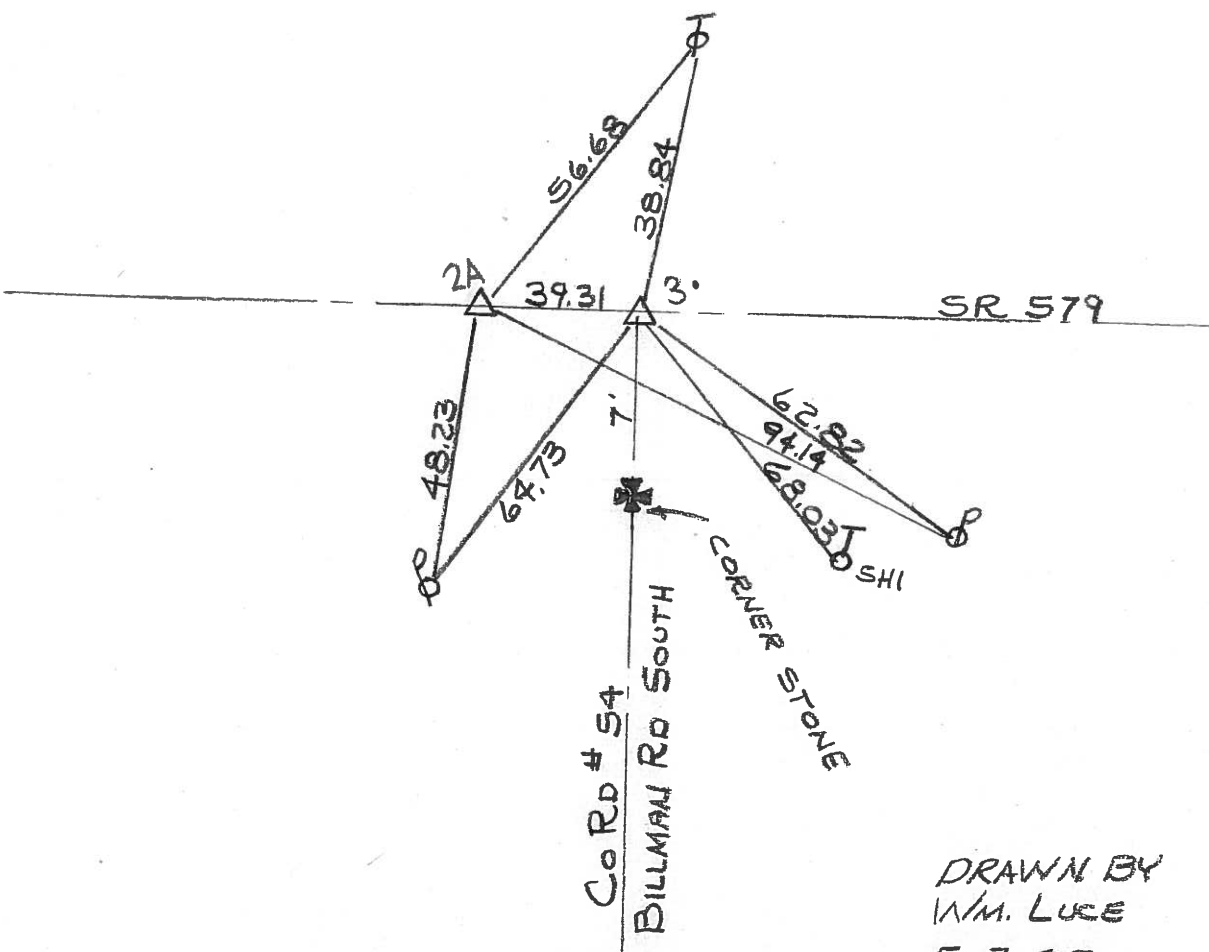
LEFT- & PAV'T. - RIGHT \_\_\_\_\_

\_\_\_\_\_ TO \_\_\_\_\_ EDGE PAVEMENT

S.L.M. 0.99



STA 52+03.6  
 RESET 2 PK NAILS

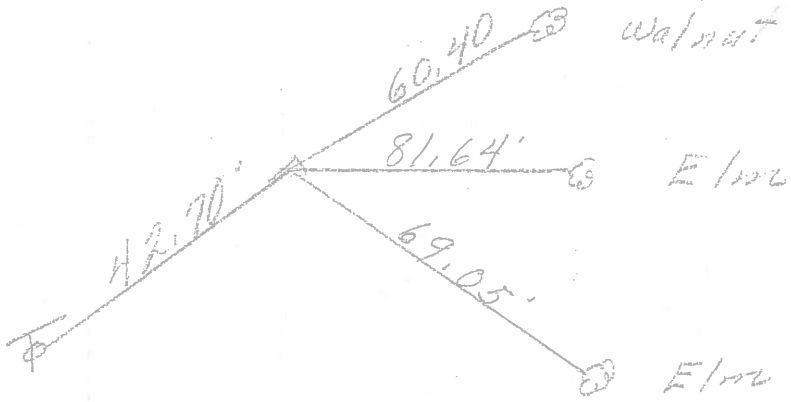


DRAWN BY  
 W.M. LUCE  
 5-7-85

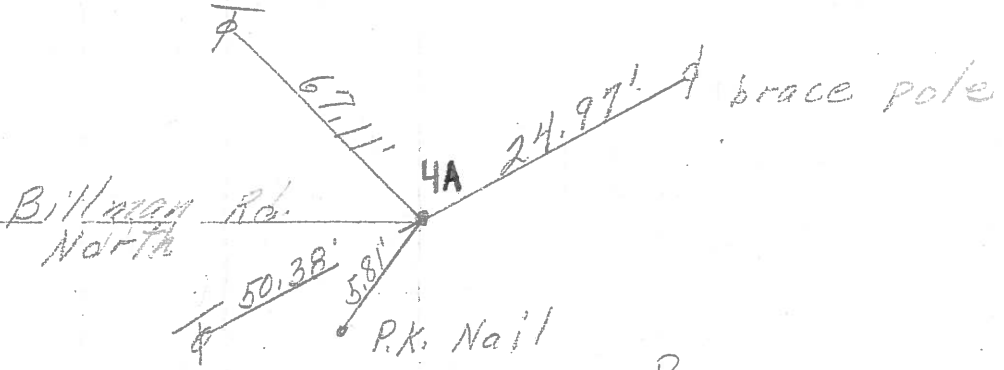
PERSONNEL	TITLE	PERSONNEL	TITLE	COUNTY	DATE
				Ottawa	9-17-71
				S. R. 579	WEATHER Fair
				SEC. 5532	TEMP. 60°
DESCRIPTION <u>Allen Twp.</u>				JOB NO.	

LEFT CENTER LINE RIGHT

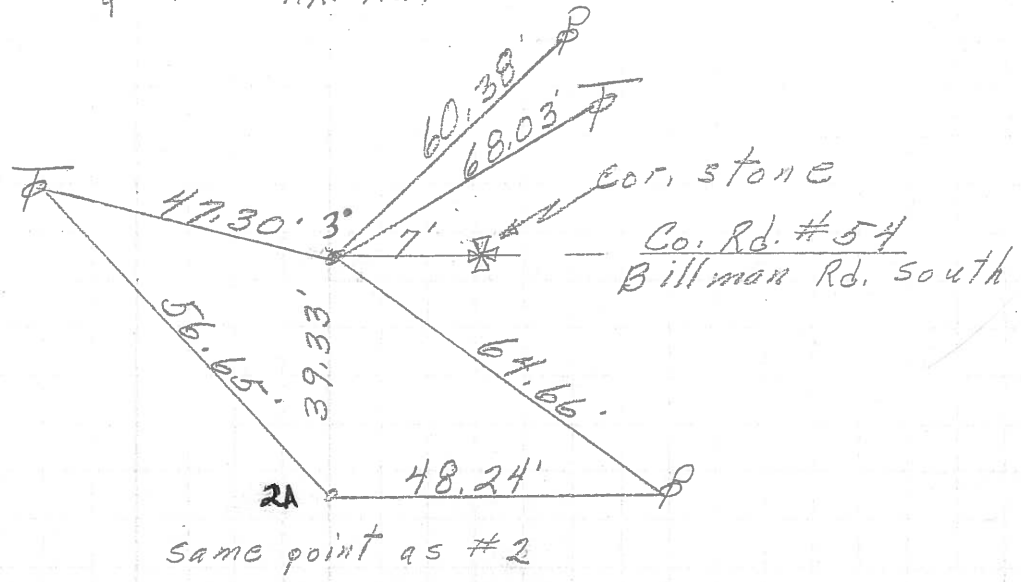
⑤  
 P.I.  
 77+91.20  
 R.R. Spk.  
 $\Delta = 0^{\circ}13'30''$  Lt.



④  
 53+37  
 R.R. Spk.  
 5.5' R.T. of  $\pm$



③  
 52+03.5  
 2-R.R. Spk.  
 Cor. of sec  
 556



PERSONNEL	TITLE	PERSONNEL	TITLE
Schneider		Pot's	
Masser			
Barbour			
Reardon			

COUNTY Ottawa DATE 9-16-68  
 S. R. 579 WEATHER Fair  
 SEC. Woodbine - East TEMP. 80°

DESCRIPTION Ties for Center Point LEFT CENTER LINE RIGHT JOB NO.

