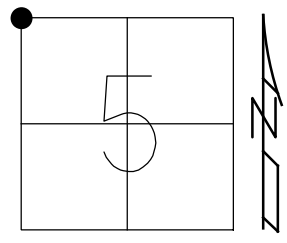


O.D.O.T. DISTRICT 2 SURVEY OFFICE (USE ONLY)

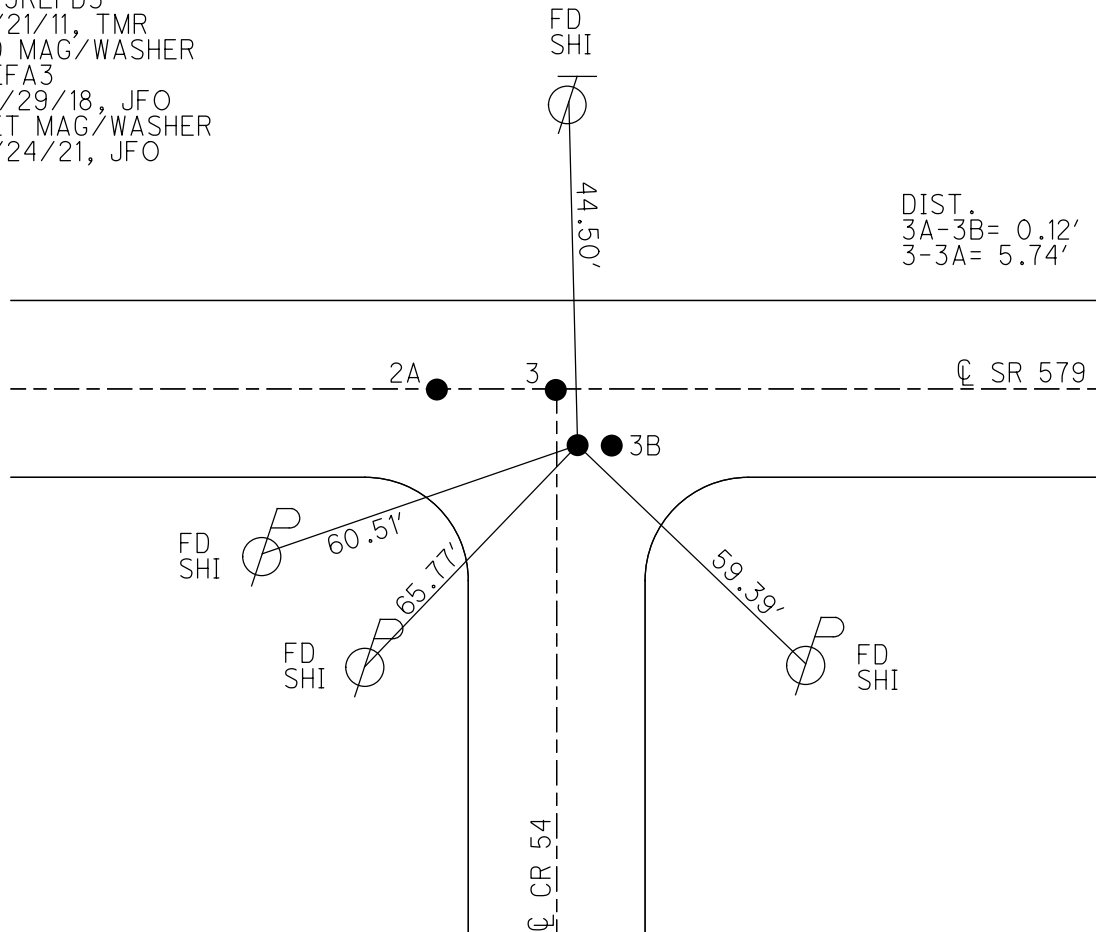
PERSONNEL \_\_\_\_\_ REFERENCE NO. 3 A SHEET 5 OF 36  
 NOTES RHOADES DATE 8/24/21 ROUTE SR 579  
 H.C. O'DONNELL WEATHER SUNNY COUNTY OTTAWA  
 R.C. NIESE TEMP. 80° TOWNSHIP ALLEN  
 DWG BY RHOADES PID 95759 SECTION 5  
 T 7 N R 13 E

TYPE MONUMENT MAG/WASHER  
 ON SURFACE - ~~BELOW~~ ON  
 OFFSET CL PAVEMENT 5.7' ~~LT~~ : RT  
17.4' TO LT EDGE PAVEMENT  
 STATION: 52+05



HORIZ.DATUM: NAD83 2011 GEOID: NAVD88 2012A  
 GRID: NORTHING: 706463.391 EASTING: 1723241.906

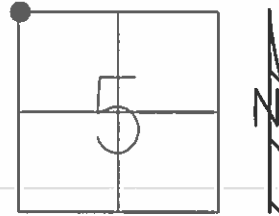
RECORD:  
 SET MAG/WASHER  
 11/26/02, MB  
 FD MAG/WASHER  
 579REFD3  
 6/21/11, TMR  
 FD MAG/WASHER  
 REFA3  
 10/29/18, JFO  
 SET MAG/WASHER  
 8/24/21, JFO



**O.D.O.T. DISTRICT 2 SURVEY OFFICE (USE ONLY)**

PERSONNEL	REFERENCE NO.	<u>3 A</u>	SHEET	<u>3</u>	OF	<u>12</u>
NOTES	FINGER	DATE	<u>6/21/11</u>	ROUTE	<u>SR 579</u>	
H.C.	<u>ROUSOS</u>	WEATHER	<u>SUNNY</u>	COUNTY	<u>OTTAWA</u>	
R.C.	<u>FINGER</u>	TEMP.	<u>91°</u>	TOWNSHIP	<u>ALLEN</u>	
				SECTION	<u>5</u>	
				<u>T 7 N</u>	<u>R 13 E</u>	

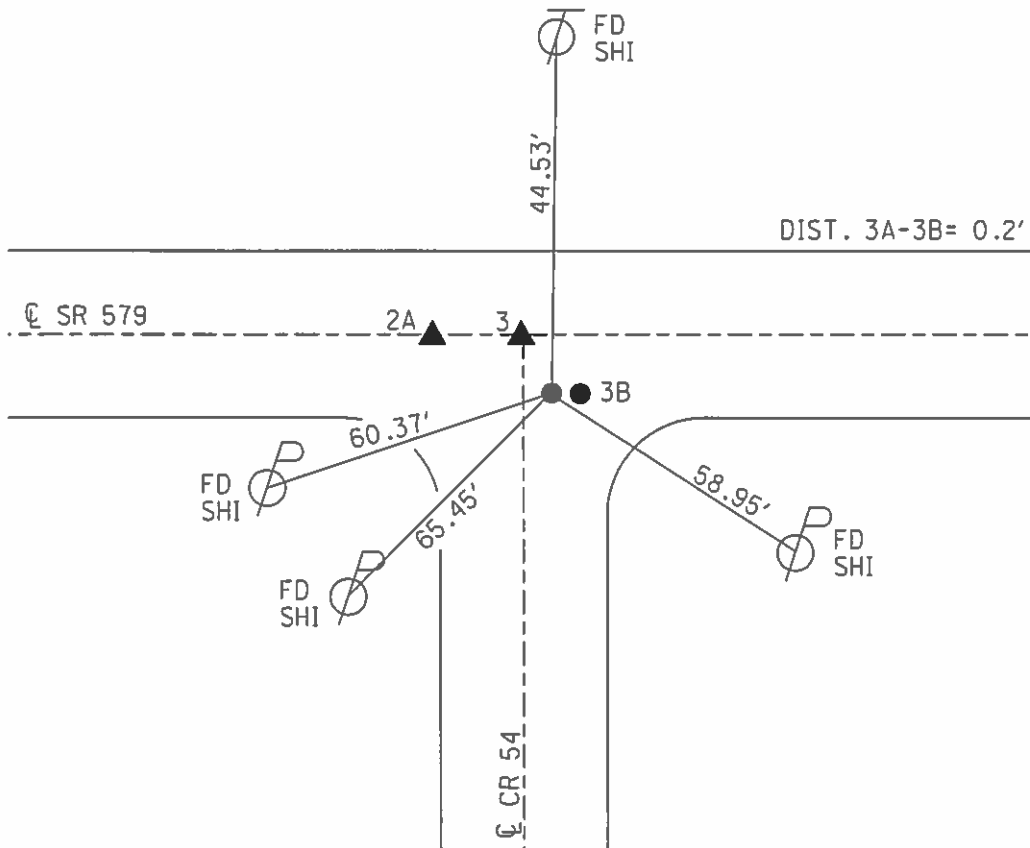
TYPE MONUMENT MAG/WASHER  
 ON SURFACE - ~~BELOW~~ ON \_\_\_\_\_  
~~LEFT~~ - CL PAV'T - RIGHT 5.7'  
17.4' TO LT EDGE PAVEMENT  
 S.L.M. 52+06



GRID: NORTHING: 706463.360 EASTING: 1723241.695

RECORD:  
 SET MAG/WASHER  
 11/26/02, MB  
 FD MAG/WASHER  
 579REFD3  
 6/21/11, TMR

DIST:  
 3B TO 3 = 5.77'  
 3A TO 3 = 5.74'  
 3 TO 2A = 39.33'  
 2A TO 3B = 39.48'  
 2A TO 3A = 39.96'



# O.D.O.T. DISTRICT 2 SURVEY OFFICE

PERSONNEL \_\_\_\_\_ REFERENCE NO. 3A SHEET 4 OF 34

NOTES BARNHISEL

H.C. CANTERBURY

R.C. BARNHISEL

DATE 8-30-02

WEATHER SUNNY

TEMP. +72°

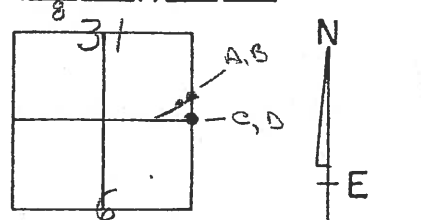
ROUTE S.R. 579

COUNTY OTTAWA

TOWNSHIP ALLEN

SECTION 6-31

T 9 N R 13 E



TYPE MONUMENT P.K. NAILS

ON SURFACE - ~~BELOW~~ SURFACE

~~LEFT - & PAV'T. - RIGHT~~ 5.7' RT &

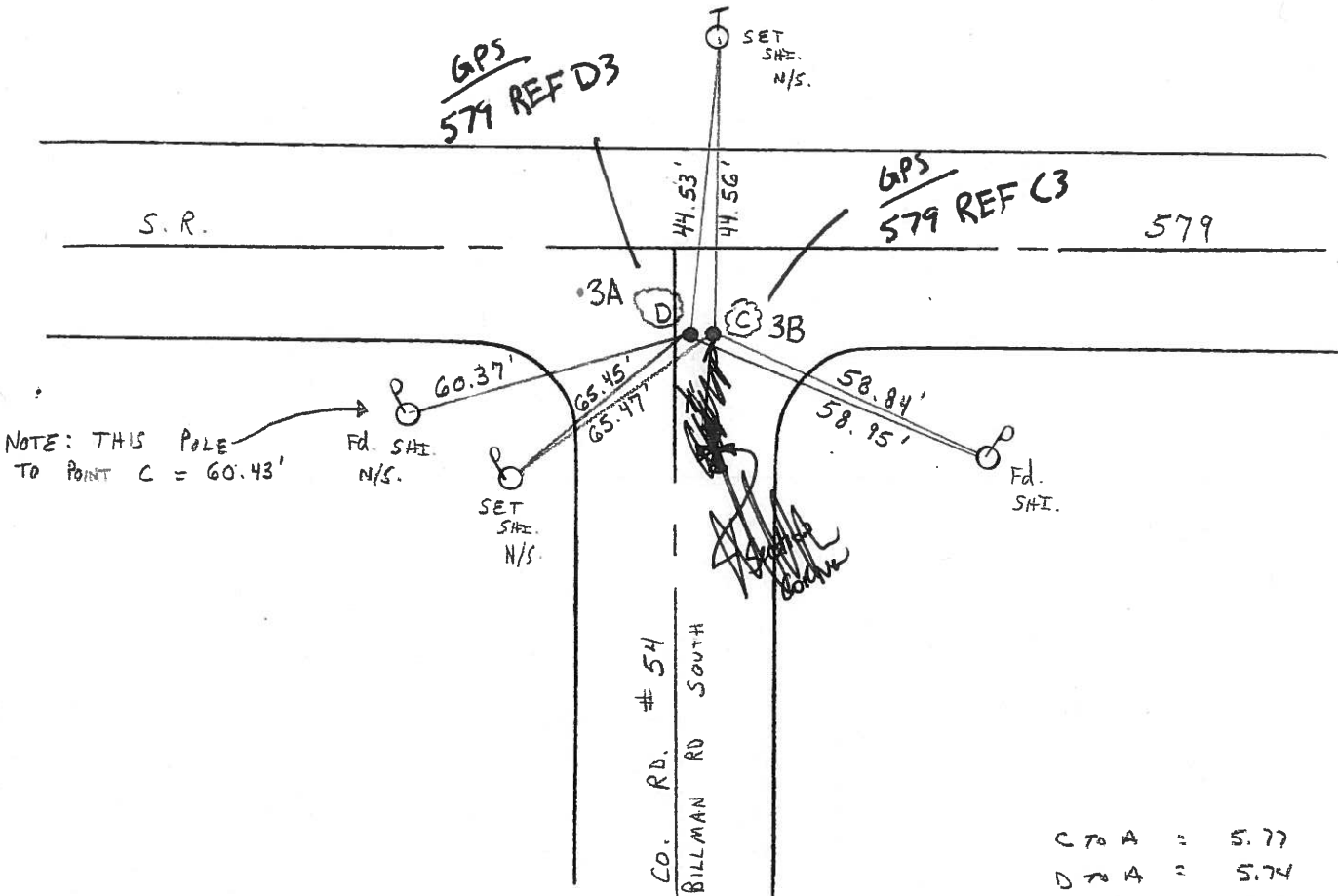
~~Both 17.4 TO~~ LT EDGE PAVEMENT

S.L.M. STA 52+06

POINT "C" ✓ FD  
 RESET MAG NAIL ONLY  
 STA 52+06  
 5.7' RT &  
 17.4' LT E.O.P.  
 "UNKNOWN ORIGIN"

POINT "D" ✓ FD  
 RESET MAG NAIL + WASHER  
 STA 52+06  
 5.7' RT &  
 17.4' TB LT E.O.P.

11-26-02 M.B.



NOTE: THIS POLE TO POINT C = 60.43'

C TO A :	5.77
D TO A :	5.74
A TO B :	39.33
B TO C :	39.48
B TO D :	39.96

# O.D.O.T. DISTRICT 2 SURVEY OFFICE

PERSONNEL \_\_\_\_\_

REFERENCE NO. 3A

SHEET 4 OF 34

NOTES BARNHISEL

H.C. CANTERBURY

R.C. BARNHISEL

DATE 8-30-02

WEATHER SUNNY

TEMP. +72°

ROUTE S.R. 579

COUNTY OTTAWA

TOWNSHIP ALLEN

SECTION 6-31

T 9 N R 13 E

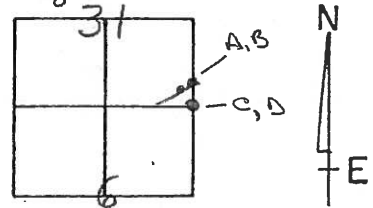
TYPE MONUMENT P.K. NAILS

ON SURFACE - ~~BELOW~~ SURFACE

~~LEFT - & PAV'T. - RIGHT~~ 5.7' RT &

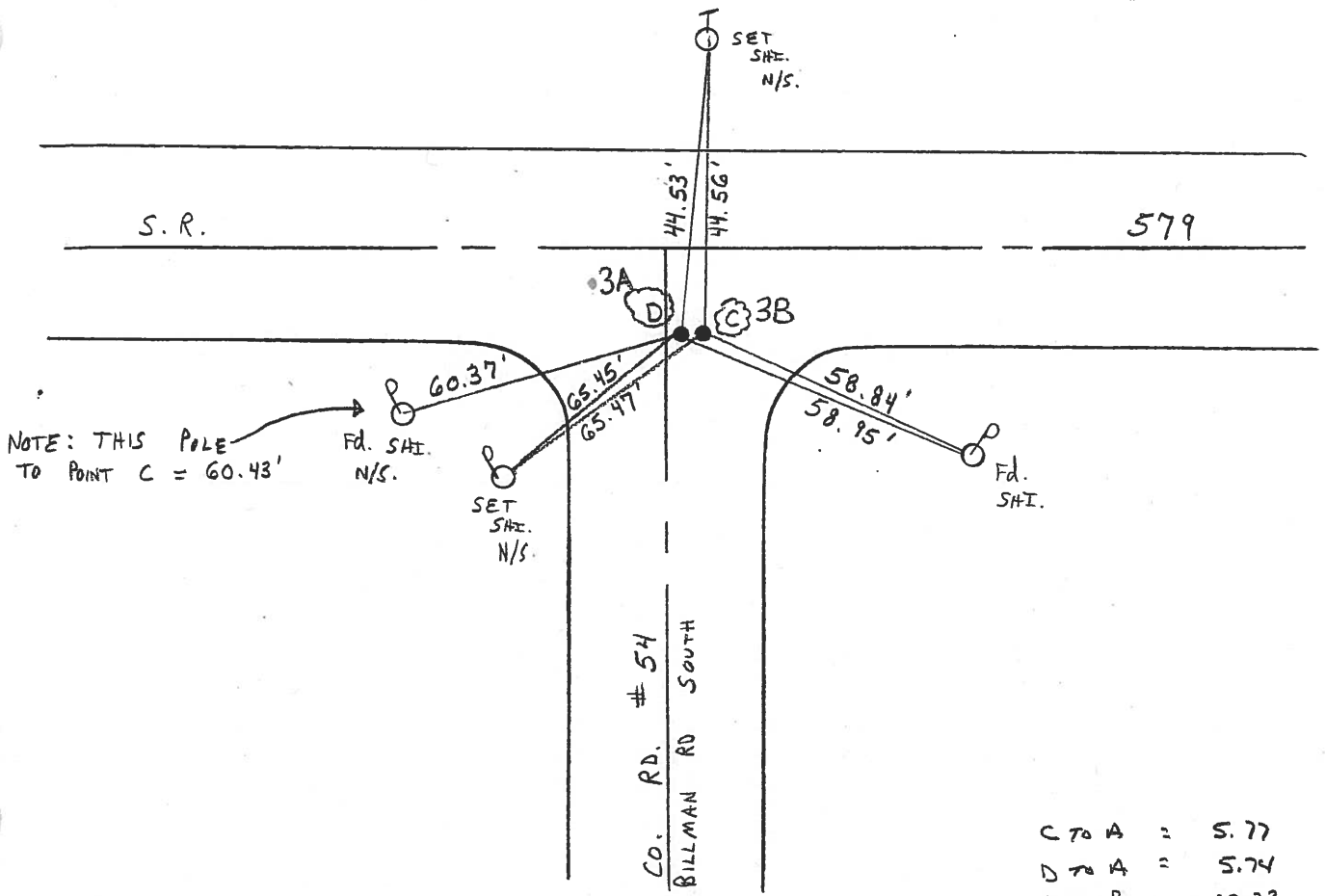
~~Both~~ 17.4 TO LT EDGE PAVEMENT

S.L.M. STA 52+06



POINT "C"  
 RESET MAG NAIL ONLY  
 STA 52+06  
 5.7' RT &  
 17.4' LT E.O.P.  
 "UNKNOWN ORIGIN"

POINT "D"  
 RESET MAG NAIL + WASHER  
 STA 52+06  
 5.7' RT &  
 17.4' TO LT E.O.P.  
 Section Corner  
 11-26-02 M.B.



C TO A	=	5.77
D TO A	=	5.74
A TO B	=	39.33
B TO C	=	39.48
B TO D	=	39.96