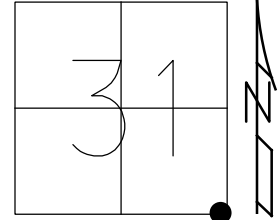


O.D.O.T. DISTRICT 2 SURVEY OFFICE (USE ONLY)

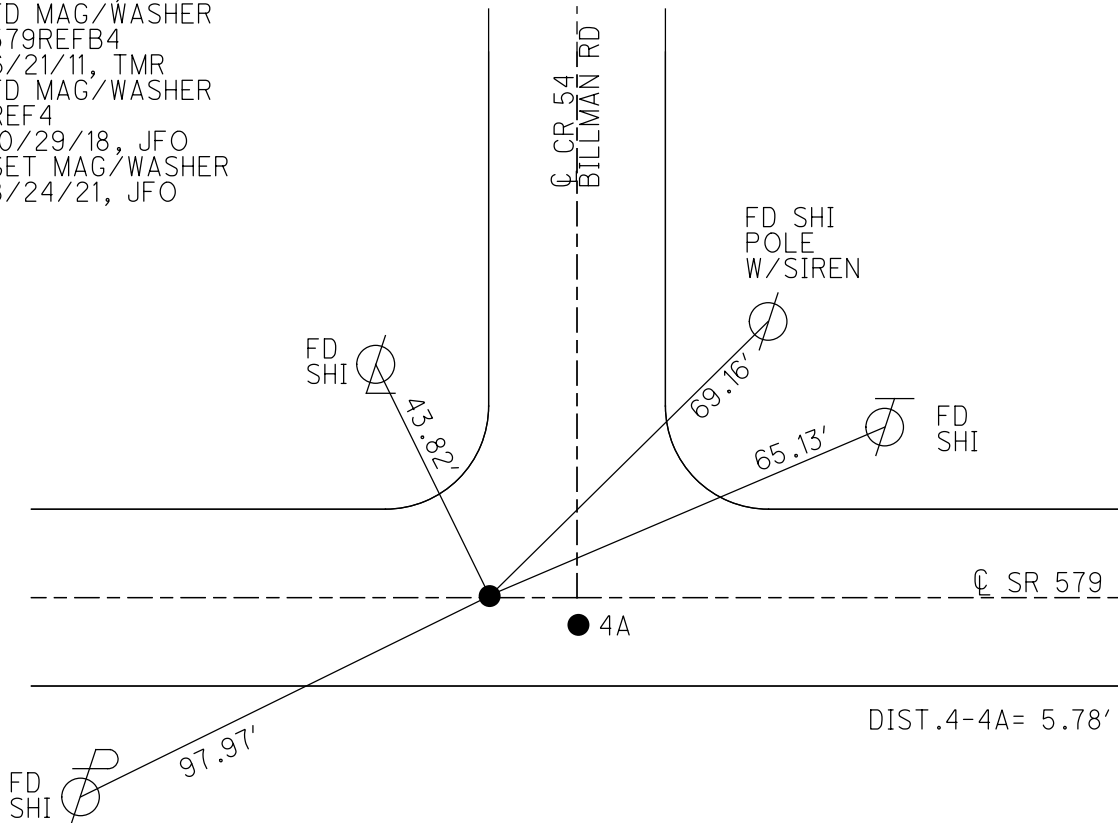
PERSONNEL \_\_\_\_\_ REFERENCE NO. 4 SHEET 7 OF 36  
 NOTES RHOADES DATE 10/5/20 ROUTE SR 579  
 H.C. AUBLE WEATHER SUNNY COUNTY OTTAWA  
 R.C. O'DONNELL TEMP. 43° TOWNSHIP ALLEN  
 DWG BY RHOADES PID 95759 SECTION 31  
 T 8 N R 13 E

TYPE MONUMENT MAG/WASHER  
 ON SURFACE - ~~BELOW~~ ON \_\_\_\_\_  
 OFFSET 0.5' RT : RT  
11.3' TO RT EDGE PAVEMENT  
 STATION: 53+32.8



HORIZ.DATUM: NAD83 2011 GEOID: NAVD88 2012A  
 GRID: NORTHING: 706471.598 EASTING: 1723372.214

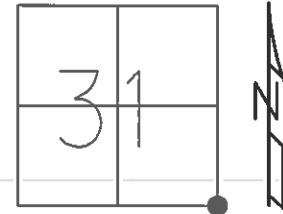
RECORD:  
 FD MAG/WASHER  
 8/30/02, MB  
 SET MAG/WASHER  
 11/26/02, MB  
 FD MAG/WASHER  
 579REFB4  
 6/21/11, TMR  
 FD MAG/WASHER  
 REF4  
 10/29/18, JFO  
 SET MAG/WASHER  
 8/24/21, JFO



O.D.O.T. DISTRICT 2 SURVEY OFFICE (USE ONLY)

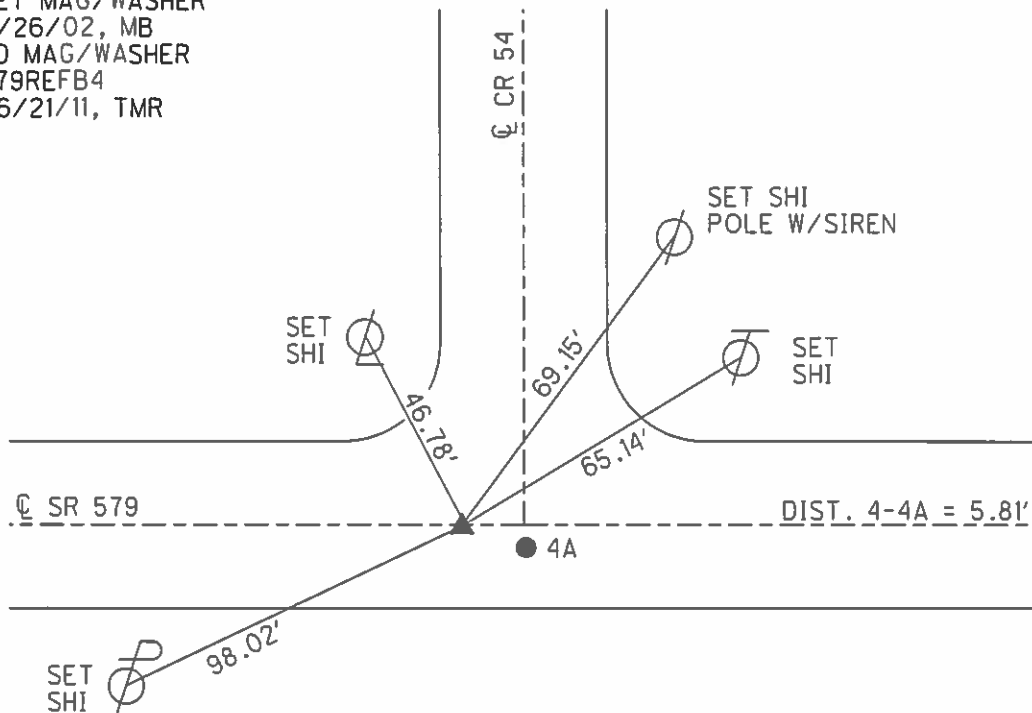
PERSONNEL \_\_\_\_\_ REFERENCE NO. 4 SHEET 5 OF 12  
 NOTES FINGER \_\_\_\_\_ DATE 6/21/11 ROUTE SR 579  
 H.C. ROUSOS \_\_\_\_\_ WEATHER SUNNY COUNTY OTTAWA  
 R.C. FINGER \_\_\_\_\_ TEMP. 91° TOWNSHIP ALLEN  
 \_\_\_\_\_ SECTION 31  
 \_\_\_\_\_ T 8 N R 13 E

TYPE MONUMENT MAG/WASHER  
 ON SURFACE - ~~BELOW~~ ON  
~~LEFT~~ - CL PAV'T - RIGHT 0.5'  
11.3' TO RT EDGE PAVEMENT  
 S.L.M. 53+32.8



GRID: NORTHING: 706471.628 EASTING: 1723371.960

RECORD:  
 FD MAG/WASHER  
 08/30/02  
 SET MAG/WASHER  
 11/26/02, MB  
 FD MAG/WASHER  
 579REFB4  
 06/21/11, TMR



# O.D.O.T. DISTRICT 2 SURVEY OFFICE

PERSONNEL \_\_\_\_\_

REFERENCE NO. 4

SHEET 5 OF 34

NOTES BARNHISEL

H.C. CANTERBURY

R.C. BARNHISEL

DATE 8-30-02

WEATHER SUNNY

TEMP. +72°

ROUTE S.R. 579

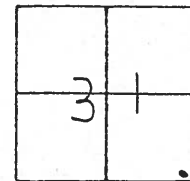
COUNTY OTTAWA

TOWNSHIP ALLEN

SECTION 31

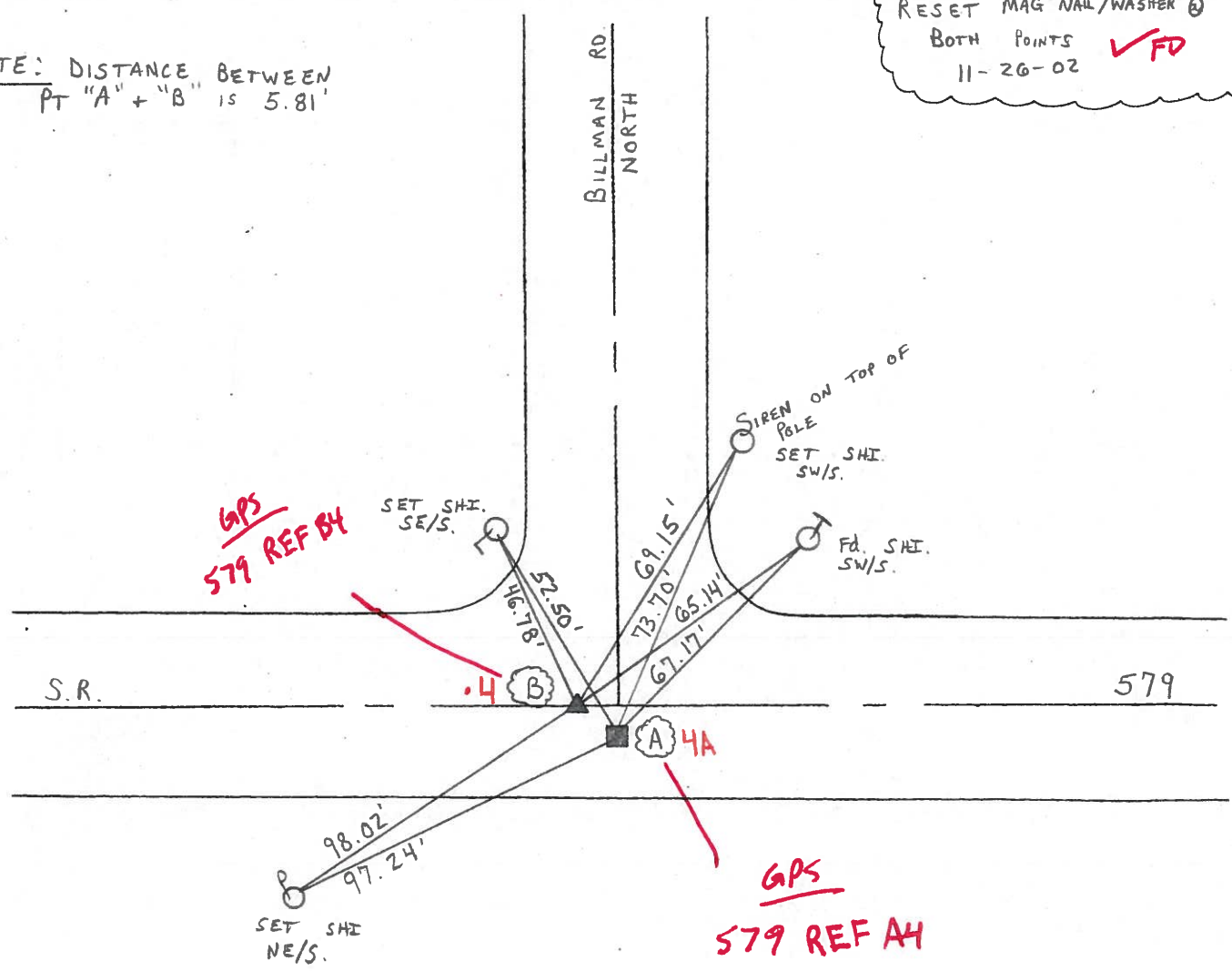
T 9 N R 13 E

	PT A	PT B
TYPE MONUMENT	<del>BOAT SPIKE</del> <b>MAG</b>	<del>PK/WASHER</del> <b>MAG</b>
ON SURFACE - BELOW	2" DOWN	2" DOWN
LEFT- & PAW'T. - RIGHT	6.2' RT	0.5' RT
5.8' TO RT EDGE PAVEMENT		11.3' TO RT E.O.P.
S.L.M.	53+37	53+35



RESET MAG NAIL/WASHER @  
BOTH POINTS **✓FD**  
11-26-02

NOTE: DISTANCE BETWEEN  
PT "A" + "B" IS 5.81'



# O.D.O.T. DISTRICT 2 SURVEY OFFICE

PERSONNEL

REFERENCE NO. 4

SHEET 5 OF 34

NOTES BARNHISEL

H.C. CANTERBURY

R.C. BARNHISEL

DATE 8-30-02

WEATHER SUNNY

TEMP. +72°

ROUTE S.R 579

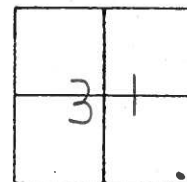
COUNTY OTTAWA

TOWNSHIP ALLEN

SECTION 31

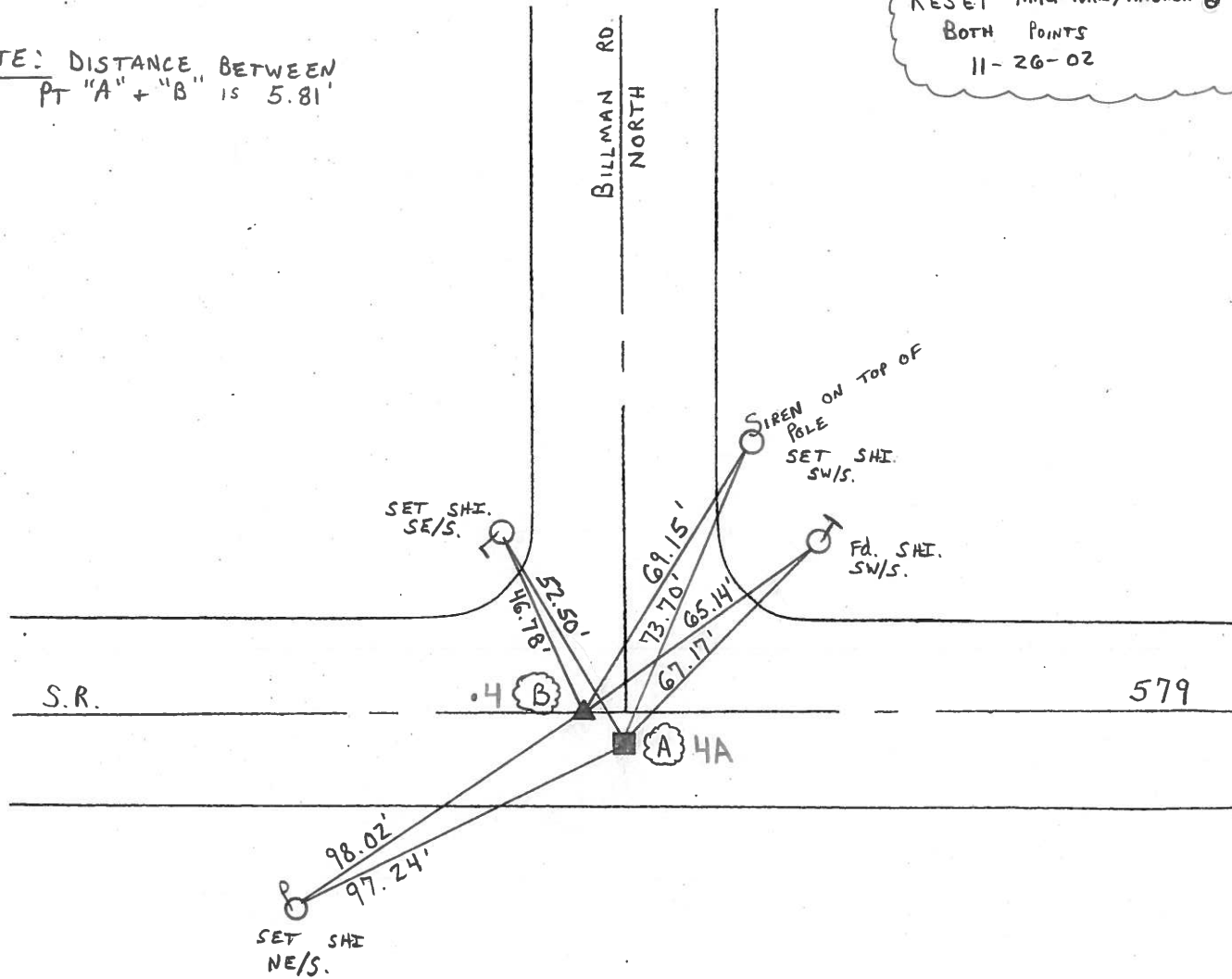
T 9 N R 13 E

	PT A	PT B
TYPE MONUMENT	BOAT SPIKE	PK/WASHER
ON SURFACE - BELOW	2" DOWN	2" DOWN
LEFT- & PAW'T. - RIGHT	6.2' RT	0.5' RT
5.8' TO RT EDGE PAVEMENT		11.3' TO RT E.O.P.
S.L.M.	53+37	53+35



RESET MAG NAIL/WASHER @  
BOTH POINTS  
11-26-02

NOTE: DISTANCE BETWEEN  
PT "A" + "B" IS 5.81'



O.D.O.T. DISTRICT 2 SURVEY OFFICE

PERSONNEL \_\_\_\_\_

REFERENCE NO. 4

SHEET 5 OF \_\_\_\_\_

NOTES CRONIN

H.C. \_\_\_\_\_

DATE 9-20-77

ROUTE SR 579

R.C. \_\_\_\_\_

WEATHER \_\_\_\_\_

COUNTY OTTAWA

\_\_\_\_\_

TEMP. \_\_\_\_\_

TOWNSHIP ALLEN

\_\_\_\_\_

SECTION 31

T9 N R13 E

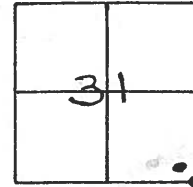
TYPE MONUMENT RR SPIKE

ON SURFACE - BELOW \_\_\_\_\_

LEFT- & PAV'T. - RIGHT 5.5'

\_\_\_\_\_ TO \_\_\_\_\_ EDGE PAVEMENT

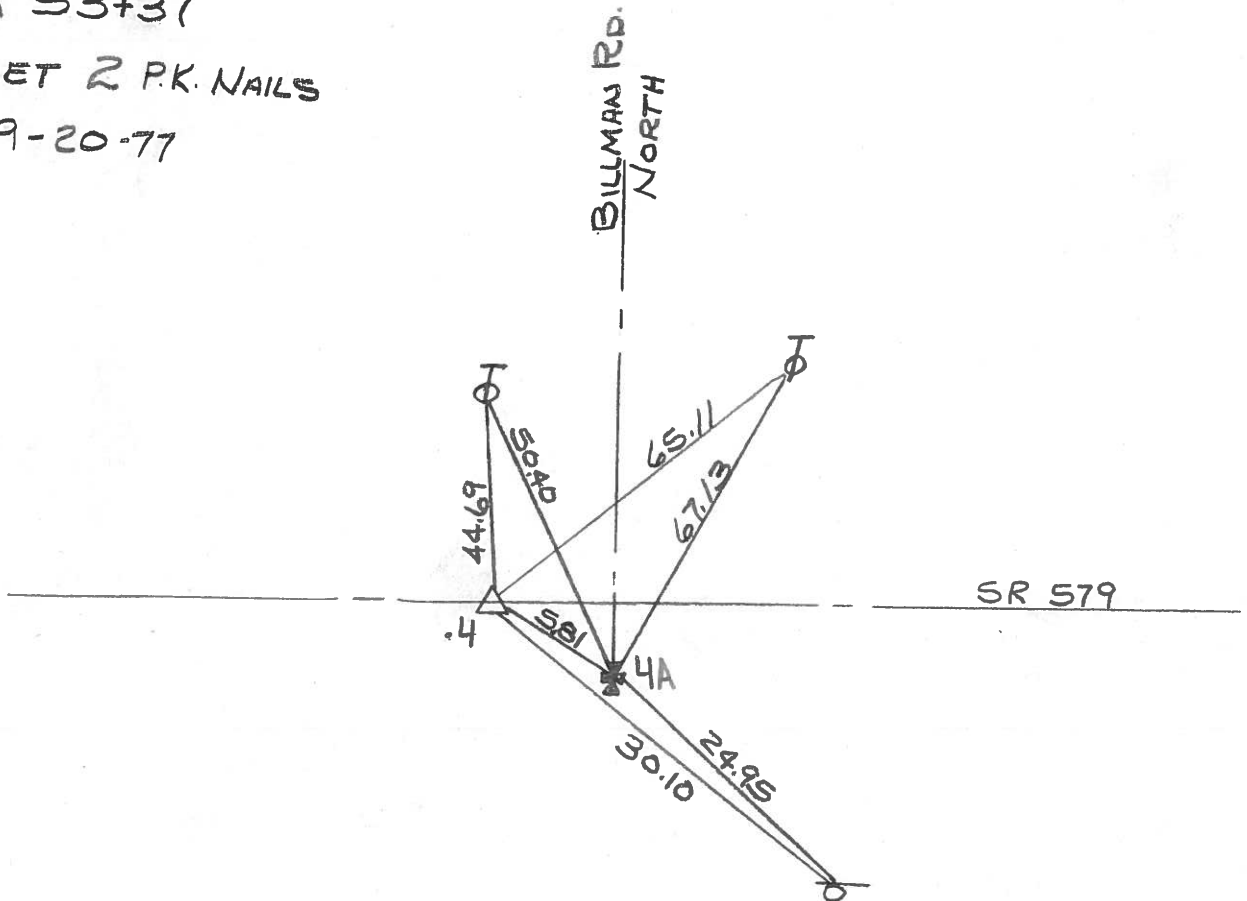
S.L.M. 1.01



STA 53+37

RESET 2 P.K. NAILS

9-20-77



DRAWN BY  
WM. LUCE  
5-7-85