

O.D.O.T. DISTRICT 2 SURVEY OFFICE (USE ONLY)

PERSONNEL

REFERENCE NO. 4 A

SHEET 8 OF 36

NOTES RHOADES

DATE 10/5/20

ROUTE SR 579

H.C. AUBLE

WEATHER SUNNY

COUNTY OTTAWA

R.C. O'DONNELL

TEMP. 43°

TOWNSHIP ALLEN

SECTION 31

DWG BY RHOADES

PID 95759

T 8 N R 13 E

TYPE MONUMENT MAG/WASHER

ON SURFACE - ~~BELOW~~ ON

OFFSET 6.2' ~~LT~~ : RT

5.8' TO RT EDGE PAVEMENT

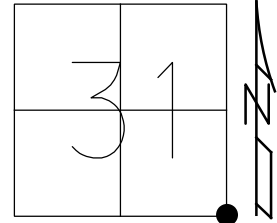
STATION: 53+38.61

HORZ.DATUM: NAD83 2011

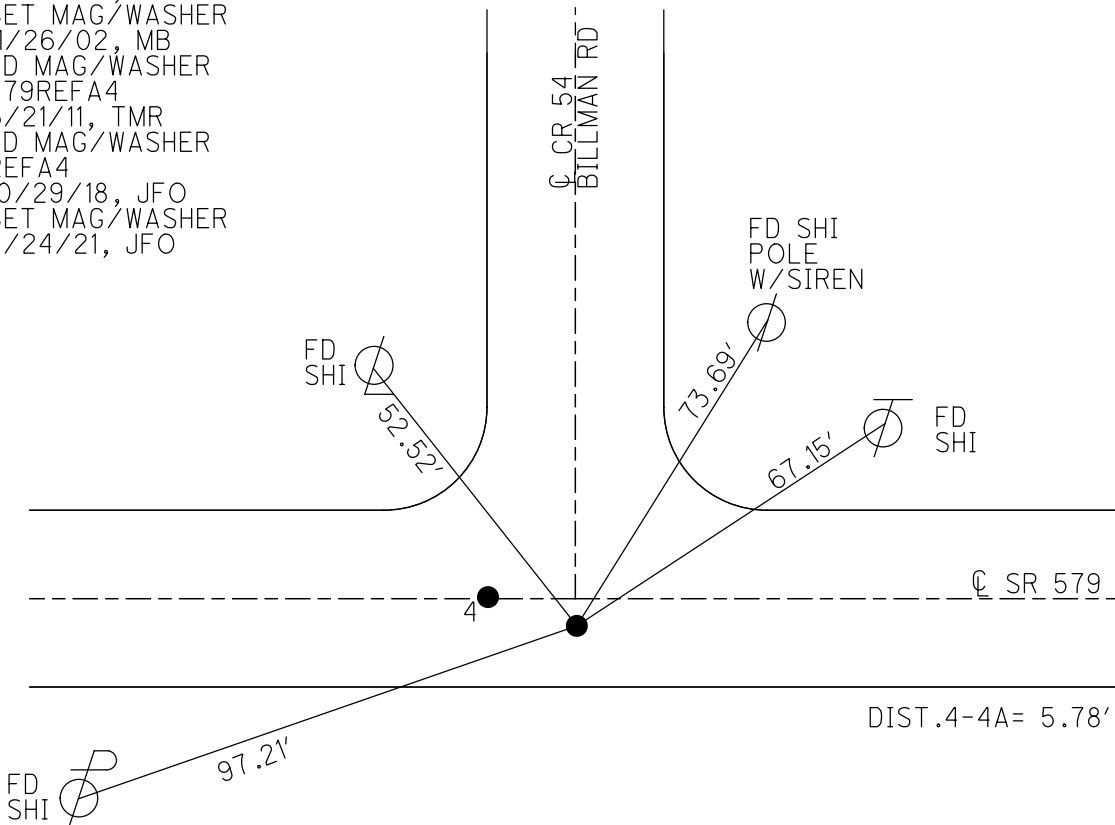
GEOID: NAVD88 2012A

GRID: NORTHING: 706466.137

EASTING: 1723374.195



RECORD:
 FD BOAT SPIKE
 FD MAG/WASHER
 2" DOWN
 8/30/02, MB
 SET MAG/WASHER
 11/26/02, MB
 FD MAG/WASHER
 579REFA4
 6/21/11, TMR
 FD MAG/WASHER
 REFA4
 10/29/18, JFO
 SET MAG/WASHER
 8/24/21, JFO

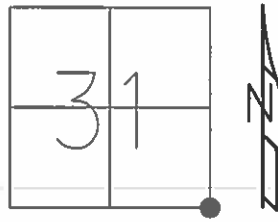


DIST.4-4A= 5.78'

O.D.O.T. DISTRICT 2 SURVEY OFFICE (USE ONLY)

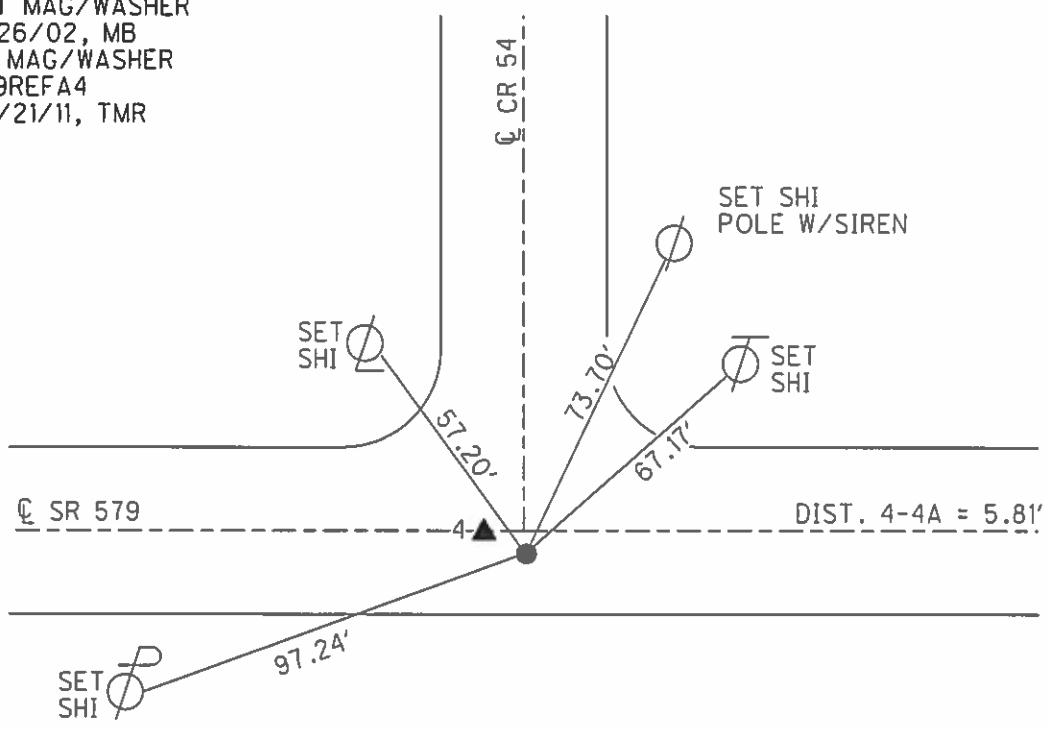
PERSONNEL	REFERENCE NO.	<u>4 A</u>	SHEET	<u>6</u>	OF	<u>12</u>
NOTES	FINGER	DATE	<u>6/21/11</u>	ROUTE	<u>SR 579</u>	
H.C.	<u>ROUSOS</u>	WEATHER	<u>SUNNY</u>	COUNTY	<u>OTTAWA</u>	
R.C.	<u>FINGER</u>	TEMP.	<u>91°</u>	TOWNSHIP	<u>ALLEN</u>	
				SECTION	<u>31</u>	
				T	<u>8</u>	N
				R	<u>13</u>	E

TYPE MONUMENT MAG/WASHER
 ON SURFACE - ~~BELOW~~ ON
~~LEFT~~ - Q PAV'T - RIGHT 6.2'
5.8' TO RT EDGE PAVEMENT
 S.L.M. 53+38.61



GRID: NORTHING: 706466.141 EASTING: 1723374.064

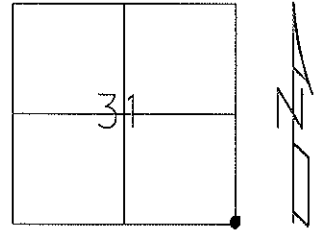
RECORD:
 FD MAG/WASHER
 08/30/02
 SET MAG/WASHER
 11/26/02, MB
 FD MAG/WASHER
 579REFA4
 06/21/11, TMR



O.D.O.T. DISTRICT 2 SURVEY OFFICE (Use Only)

PERSONNEL	REFERENCE NO. <u>A4</u>	SHEET _____ OF _____
NOTES <u>Finger</u>	DATE <u>6/21/11</u>	ROUTE <u>SR 579</u>
H.C. <u>Rousos</u>	WEATHER <u>Sunny</u>	COUNTY <u>Ottawa</u>
R.C. <u>Finger</u>	TEMP. <u>91°F</u>	TOWNSHIP <u>Allen</u>
_____	_____	SECTION <u>31</u>
_____	_____	T & N <u>R 13 E</u>

TYPE MONUMENT Mag Nail/Washer
 ON SURFACE - ~~BELOW~~ Surface
 LEFT - ~~C~~ PAV'T - RIGHT 6.2'
5.8' TO RT. EDGE PAVEMENT
 S.L.M. 1.01 53+37
 Grid: Northing: 706466.141 Easting: 1723374.064

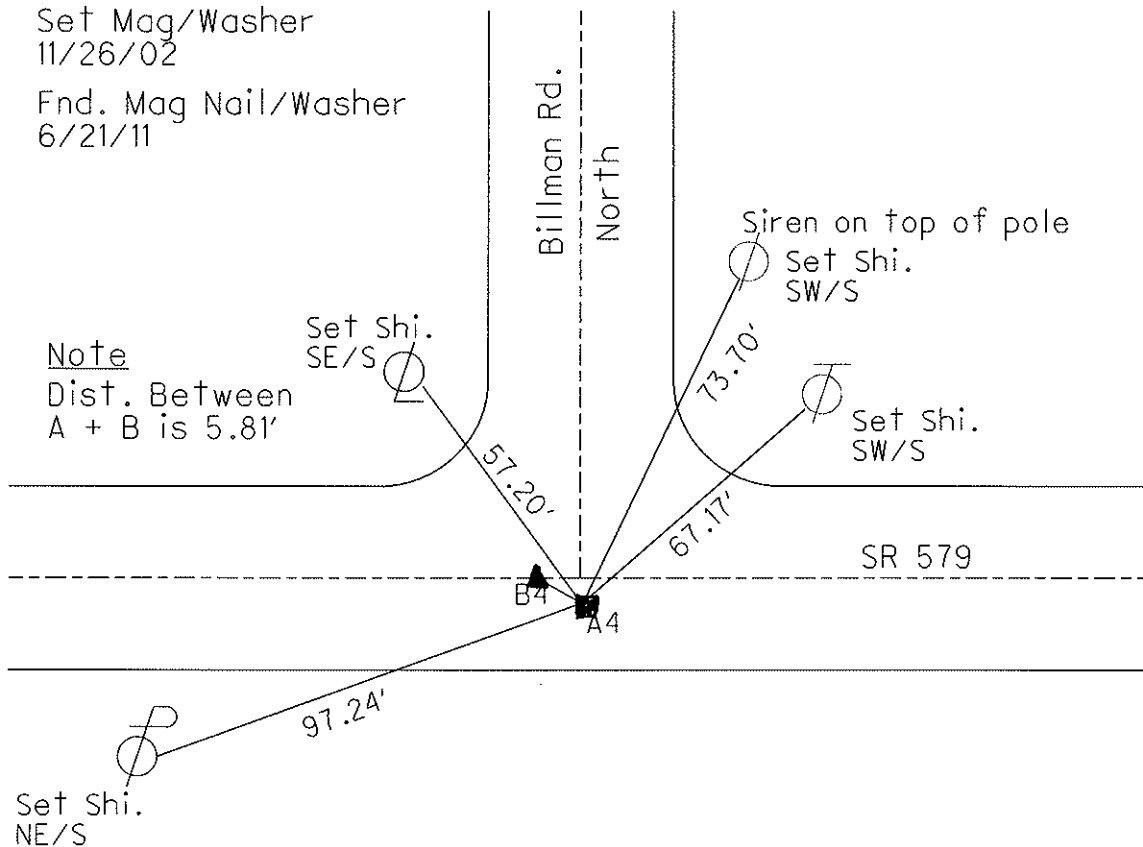


Record

Ref A4

Boat Spike
 Fnd. Mag Nail
 2'' Down
 8/30/2002
 Set Mag/Washer
 11/26/02
 Fnd. Mag Nail/Washer
 6/21/11

Note
 Dist. Between
 A + B is 5.81'



O.D.O.T. DISTRICT 2 SURVEY OFFICE

PERSONNEL _____

REFERENCE NO. 4

SHEET 5 OF 34

NOTES BARNHISEL

H.C. CANTERBURY

R.C. BARNHISEL

DATE 8-30-02

WEATHER SUNNY

TEMP. +72°

ROUTE S.R 579

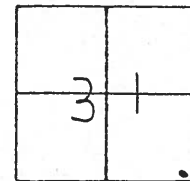
COUNTY OTTAWA

TOWNSHIP ALLEN

SECTION 31

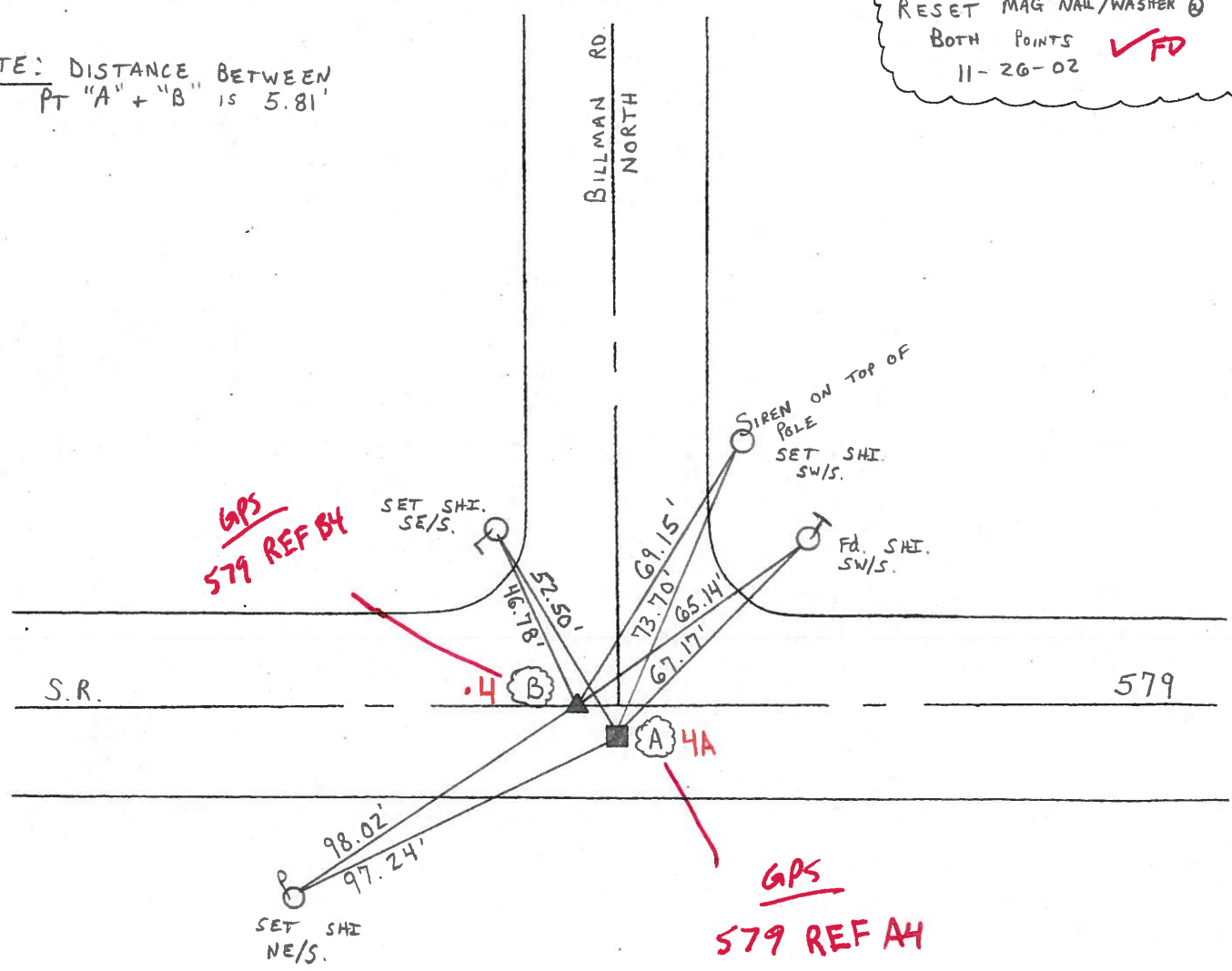
T 9 N R 13 E

	PT A	PT B
TYPE MONUMENT	BOAT SPIKE MAG	PK/WASHER MAG
ON SURFACE - BELOW	2" DOWN	2" DOWN
LEFT- & PAW'T. - RIGHT	6.2' RT	0.5' RT
5.8' TO RT EDGE PAVEMENT		11.3' TO RT E.O.P.
S.L.M.	53+37	53+35



RESET MAG NAIL/WASHER @
 BOTH POINTS **✓FD**
 11-26-02

NOTE: DISTANCE BETWEEN
PT "A" + "B" IS 5.81'



O.D.O.T. DISTRICT 2 SURVEY OFFICE

PERSONNEL

REFERENCE NO. 4

SHEET 5 OF 34

NOTES BARNHISEL

H.C. CANTERBURY

R.C. BARNHISEL

DATE 8-30-02

WEATHER SUNNY

TEMP. +72°

ROUTE S.R 579

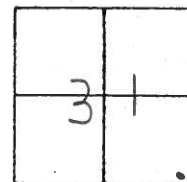
COUNTY OTTAWA

TOWNSHIP ALLEN

SECTION 31

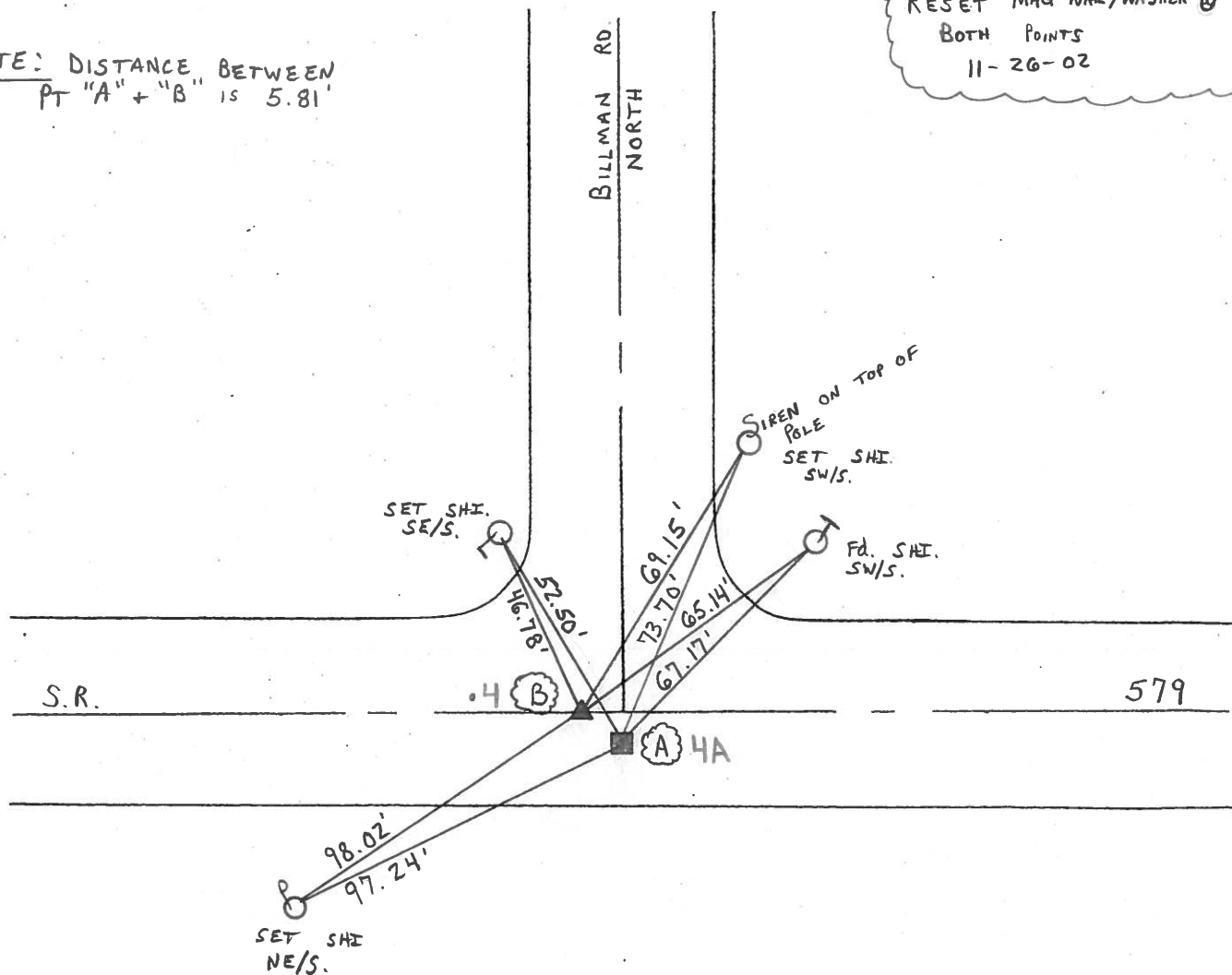
T 9 N R 13 E

	PT A	PT B
TYPE MONUMENT	BOAT SPIKE	PK/WASHER
ON SURFACE - BELOW	2" DOWN	2" DOWN
LEFT- & PAW'T. - RIGHT	6.2' RT	0.5' RT
5.8' TO RT EDGE PAVEMENT		11.3' TO RT E.O.P.
S.L.M.	53+37	53+35



RESET MAG NAIL/WASHER @
BOTH POINTS
11-26-02

NOTE: DISTANCE BETWEEN
PT "A" + "B" IS 5.81'



O.D.O.T. DISTRICT 2 SURVEY OFFICE

PERSONNEL _____

REFERENCE NO. 4

SHEET 5 OF _____

NOTES CRONIN

H.C. _____

DATE 9-20-77

ROUTE SR 579

R.C. _____

WEATHER _____

COUNTY OTTAWA

TEMP. _____

TOWNSHIP ALLEN

SECTION 31

T9 N R13 E

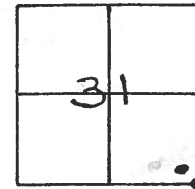
TYPE MONUMENT RR SPIKE

ON SURFACE - BELOW _____

LEFT- & PAV'T. - RIGHT 5.5'

_____ TO _____ EDGE PAVEMENT

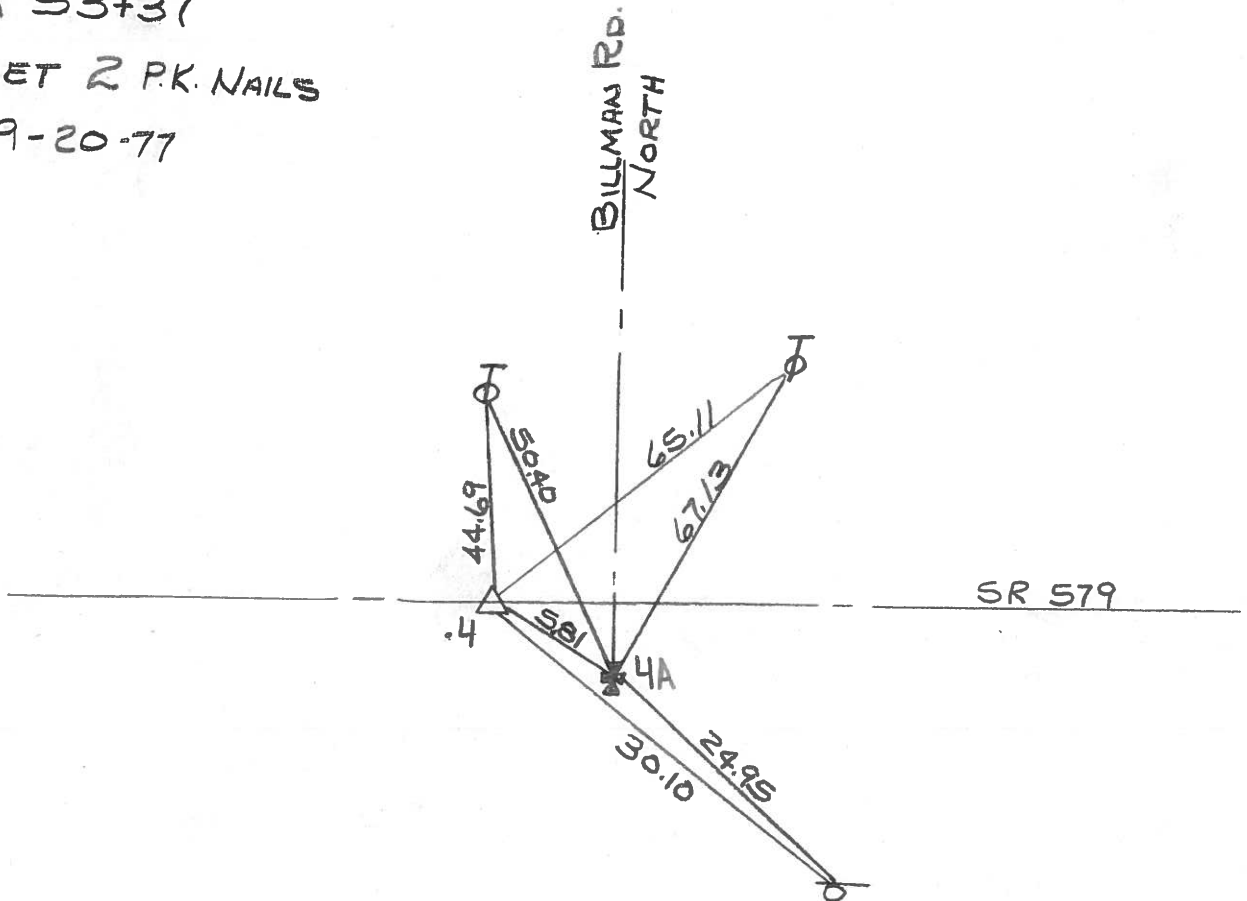
S.L.M. 1.01



STA 53+37

RESET 2 P.K. NAILS

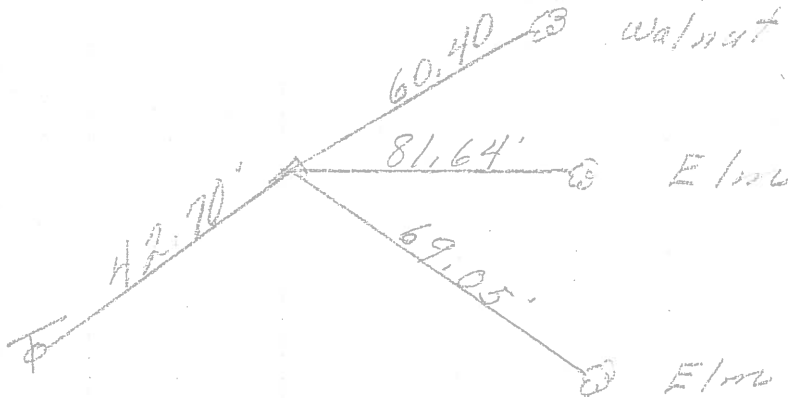
9-20-77



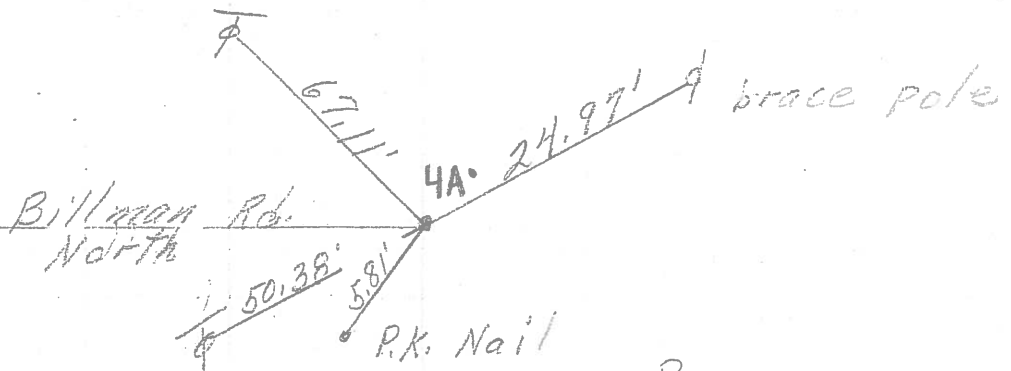
DRAWN BY
WM. LUCE
5-7-85

PERSONNEL	TITLE	PERSONNEL	TITLE
		COUNTY <u>Ottawa</u>	DATE <u>9-17-71</u>
		S. R. <u>579</u>	WEATHER <u>Fair</u>
		SEC. <u>5E32</u>	TEMP. <u>60°</u>
DESCRIPTION <u>Allen Twp.</u>			JOB NO.
	LEFT	CENTER LINE	RIGHT

PI. (5)
 77+91.20
 R.R. Spk.
 $\Delta = 0^{\circ}13'30'' Lt.$



(4)
 53+37
 R.R. Spk.
 5.5' R.T. of E



(3)
 52+03.5
 2-R.R. Spk.
 Cor. of sec
 5E6

