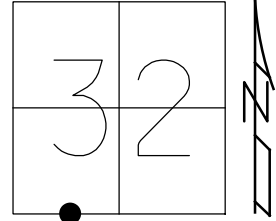


O.D.O.T. DISTRICT 2 SURVEY OFFICE (USE ONLY)

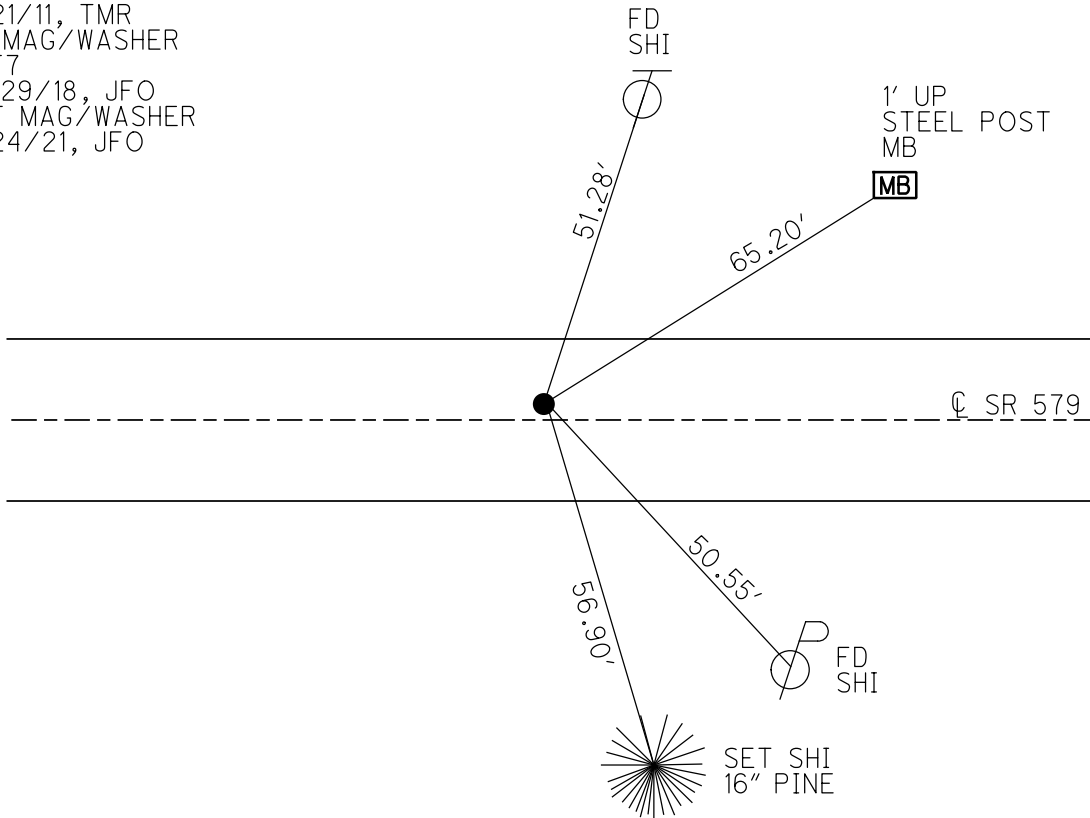
PERSONNEL _____ REFERENCE NO. 7 SHEET 10 OF 36
 NOTES RHOADES DATE 10/5/20 ROUTE SR 579
 H.C. AUBLE WEATHER SUNNY COUNTY OTTAWA
 R.C. O'DONNELL TEMP. 46° TOWNSHIP ALLEN
 DWG BY RHOADES PID 95759 SECTION 32
 T 8 N R 13 E

TYPE MONUMENT MAG/WASHER
 ON SURFACE - ~~BELOW~~ ON
 OFFSET ☐ PAVEMENT 1.1' LT : RT
9.2' TO LT EDGE PAVEMENT
 STATION: 93+89.14



HORZ. DATUM: NAD83 2011 GEOID: NAVD88 2012A
 GRID: NORTHING: 706552.241 EASTING: 1727308.609

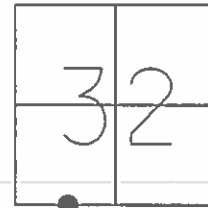
RECORD: P.C.
 SET P.K./WASHER
 9/20/77
 SET MAG/WASHER
 11/26/02, MB
 FD MAG/WASHER
 579REF7
 6/21/11, TMR
 FD MAG/WASHER
 REF7
 10/29/18, JFO
 SET MAG/WASHER
 8/24/21, JFO



O.D.O.T. DISTRICT 2 SURVEY OFFICE (USE ONLY)

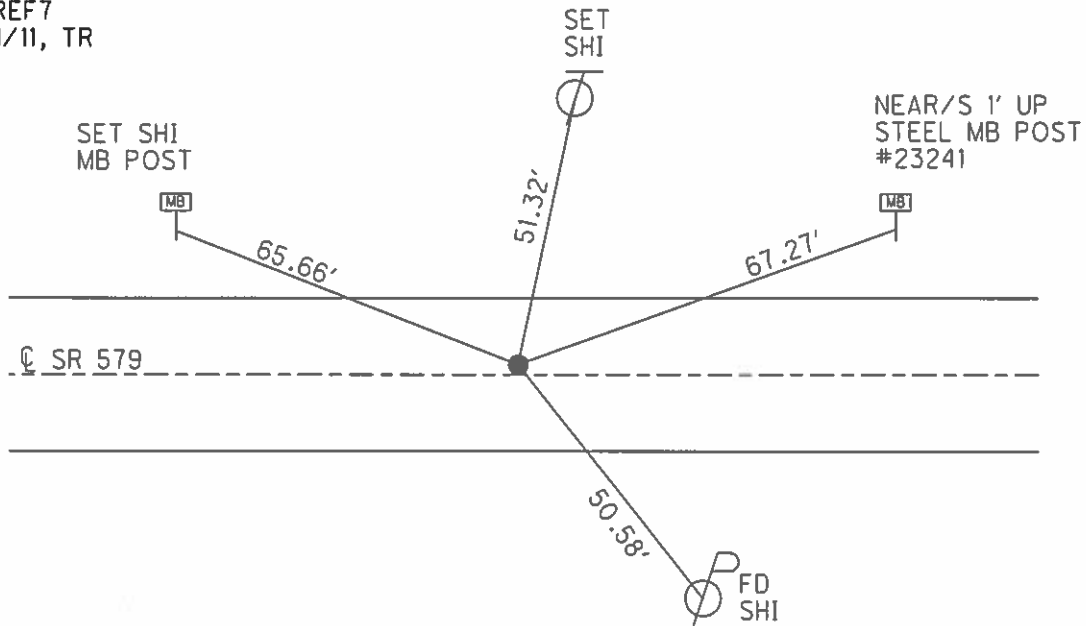
PERSONNEL	REFERENCE NO.	<u>7</u>	SHEET	<u>8</u>	OF	<u>12</u>
NOTES	FINGER	DATE	<u>6/21/11</u>	ROUTE	<u>SR 579</u>	
H.C.	<u>ROUSOS</u>	WEATHER	<u>SUNNY</u>	COUNTY	<u>OTTAWA</u>	
R.C.	<u>FINGER</u>	TEMP.	<u>91°</u>	TOWNSHIP	<u>ALLEN</u>	
				SECTION	<u>32</u>	
				<u>T.8 N</u>	<u>R.13 E</u>	

TYPE MONUMENT MAG/WASHER
 ON SURFACE - ~~BELOW~~ ON _____
 LEFT - ☉ PAV'T - ~~RIGHT~~ 1.1'
9.2' TO LT EDGE PAVEMENT
 S.L.M. 92+72



GRID: NORTHING: 706552.108 EASTING: 1727308.427

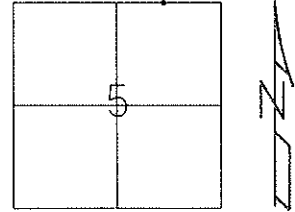
RECORD: P.C.
 SET P.K./WASHER
 09/20/77
 SET MAG/WASHER
 11/26/02, MB
 FD MAG/WASHER
 579REF7
 6/21/11, TR



O.D.O.T. DISTRICT 2 SURVEY OFFICE (Use Only)

PERSONNEL _____ REFERENCE NO. 7 SHEET _____ OF _____
 NOTES Finger DATE 6/21/11 ROUTE S.R. 579
 H.C. Rousos WEATHER Sunny COUNTY Ottawa
 R.C. Finger TEMP. 91°F TOWNSHIP Allen
 _____ SECTION 5
 _____ T 8 N R 13 E

TYPE MONUMENT Mag Nail / Washer
 ON SURFACE - ~~BELOW~~ On Surface
 LEFT - C PAV'T - RIGHT 1.1' Lt. C
9.2' TO Lt. EDGE PAVEMENT
 S.L.M. 92+72

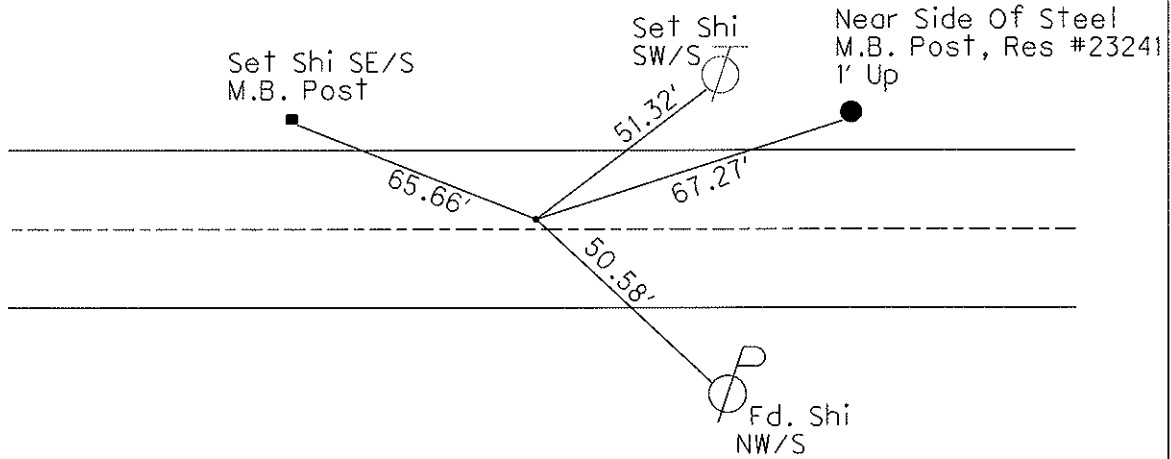


Grid: Northing: 706552.108 Easting: 1727308.427

Record
 PC
 P.K. Nail Set
 Atop P.K. Shank
 9/20/77

 Reset Mag Nail/ Washer
 11/26/2002
 MB

 Fd. Mag Nail/Washer
 6/21/11
 TR



O.D.O.T. DISTRICT 2 SURVEY OFFICE

PERSONNEL _____

REFERENCE NO. 7

SHEET 7 OF 34

NOTES BARNHISEL

H.C. CANTERBURY

R.C. BARNHISEL

DATE 9-19-02

WEATHER SUN

TEMP. +75°

ROUTE S.R. 579

COUNTY OTTAWA

TOWNSHIP ALLEN

SECTION 5

T 8 N R 13 E

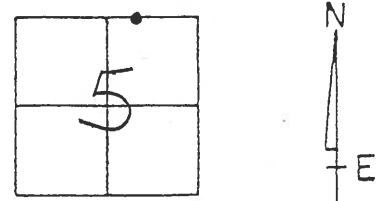
TYPE MONUMENT PK SHANK

~~ON SURFACE~~ - BELOW 2" DOWN

LEFT - ~~Q~~ PAV'T. - ~~RIGHT~~ 1.1' LT Q

9.2' TO LT. EDGE PAVEMENT

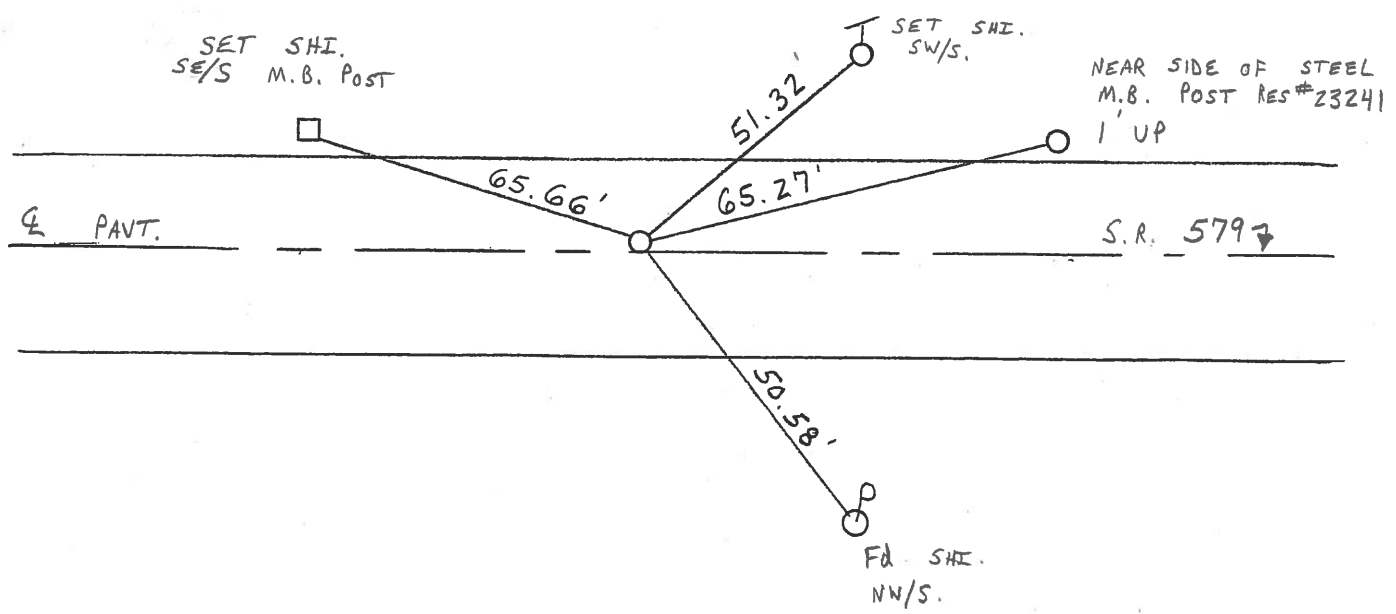
S.L.M. 92 + 72



P.C.
Re-set P.K. Nail
9-20-77

RESET MAG NAIL/WASHER
11-26-02
M.B. ✓ FD

GPS
579 REF 7



O.D.O.T. DISTRICT 2 SURVEY OFFICE

PERSONNEL

REFERENCE NO. 7

SHEET 7 OF 34

NOTES BARNHISEL

H.C. CANTERBURY

R.C. BARNHISEL

DATE 9-19-02

WEATHER SUN

TEMP. +75°

ROUTE S.R. 579

COUNTY OTTAWA

TOWNSHIP ALLEN

SECTION 5

T 8 N R 13 E

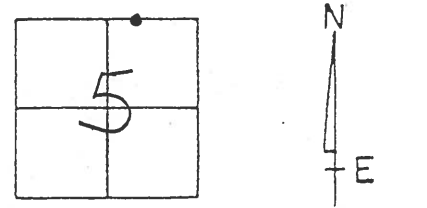
TYPE MONUMENT PK SHANK

~~ON SURFACE~~ - BELOW 2" DOWN

LEFT - Q PAV'T. - ~~RIGHT~~ 1.1' LT Q

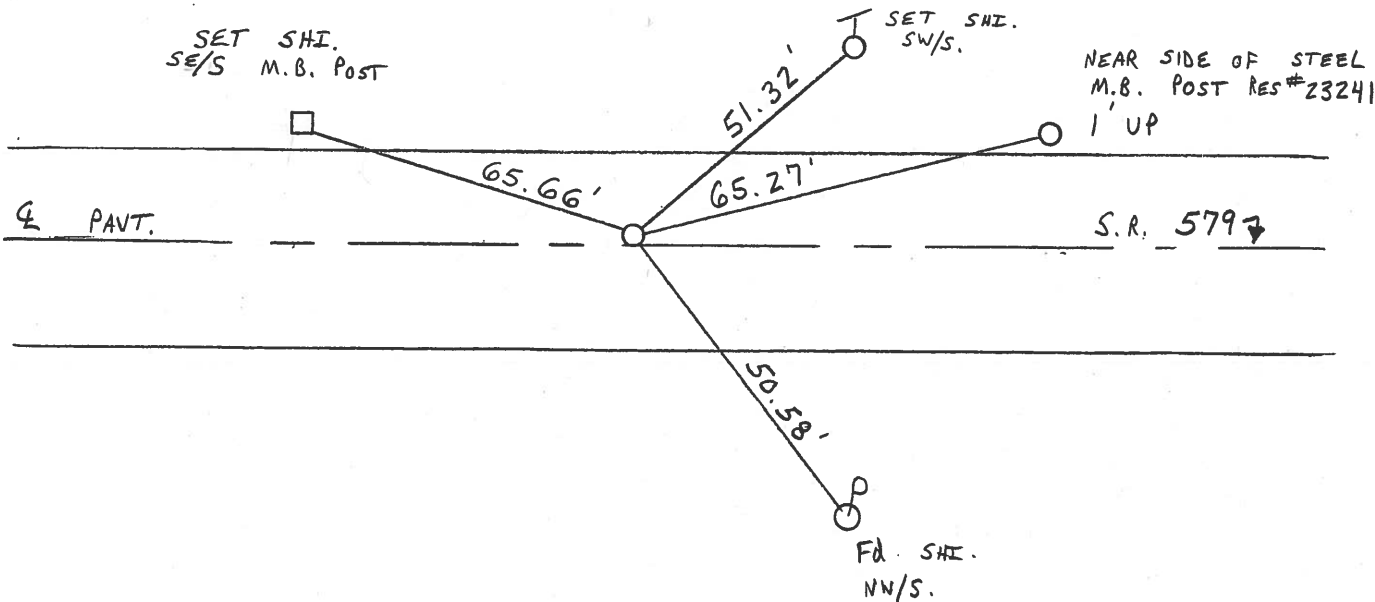
9.2' TO LT. EDGE PAVEMENT

S.L.M. 92 + 72



P.C.
Re-set P.K. Nail
9-20-77

RESET MAG NAIL/WASHER
11-26-02
M.B.



O.D.O.T. DISTRICT 2 SURVEY OFFICE

PERSONNEL

REFERENCE NO. 7

SHEET 7 OF

NOTES CRONIN

H.C.

R.C.

DATE 9-20-77

WEATHER

TEMP.

ROUTE SR 579

COUNTY OTTAWA

TOWNSHIP ALLEN

SECTION 5

T & N R I B E

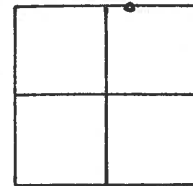
TYPE MONUMENT PK

ON SURFACE - BELOW

LEFT - & PAV'T. - RIGHT EDGE

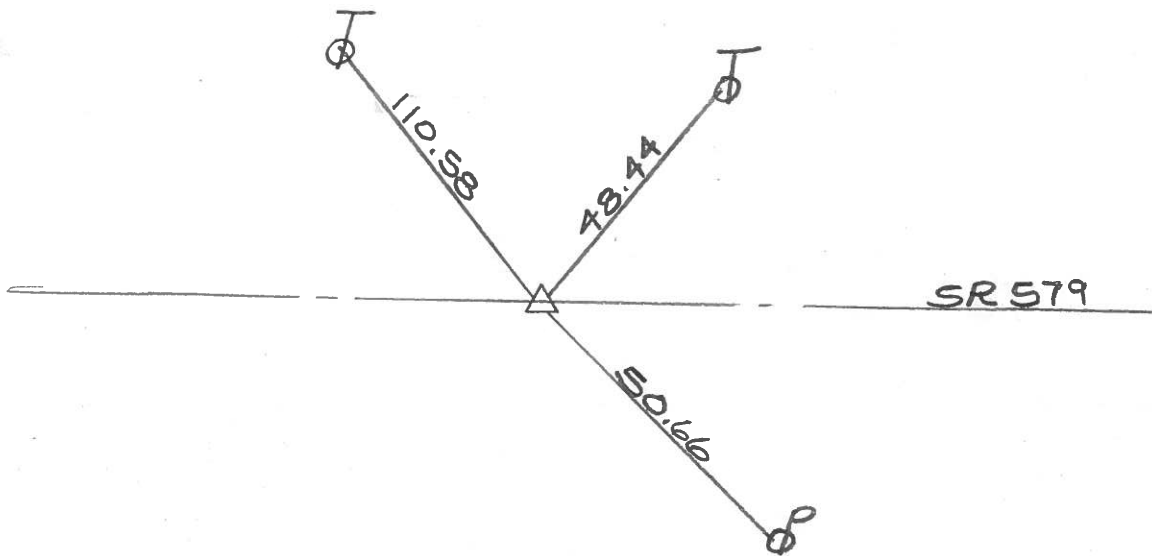
 TO EDGE PAVEMENT

S.L.M.



PC RESET PK NAIL

9-20-77



DRAWN BY
WM. LUCE
5-7-85.

PERSONNEL TITLE PERSONNEL TITLE

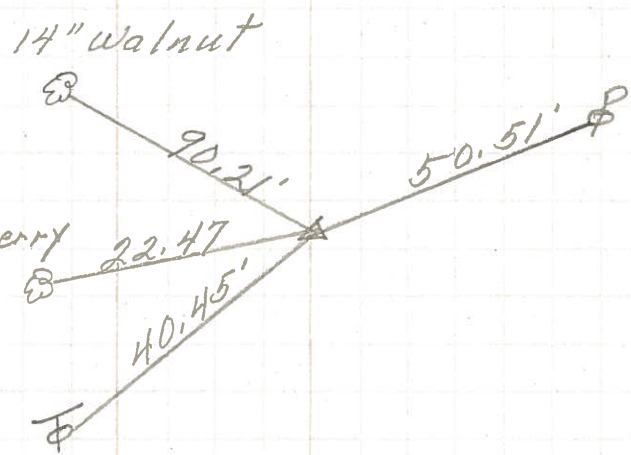
COUNTY Ottawa DATE 9-17-71

S. R. 579 WEATHER Fair

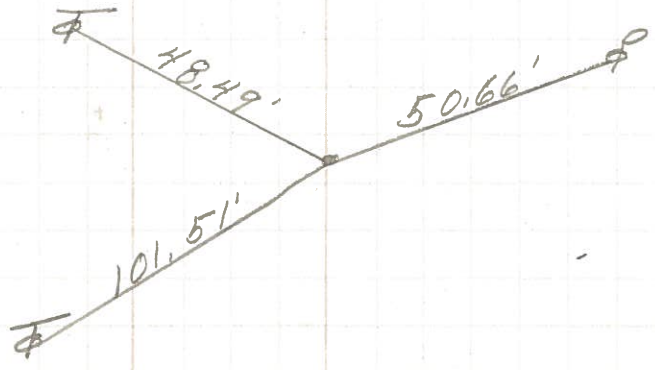
SEC. 5E32 TEMP. 60°

DESCRIPTION Allen Twp. LEFT CENTER LINE RIGHT JOB NO.

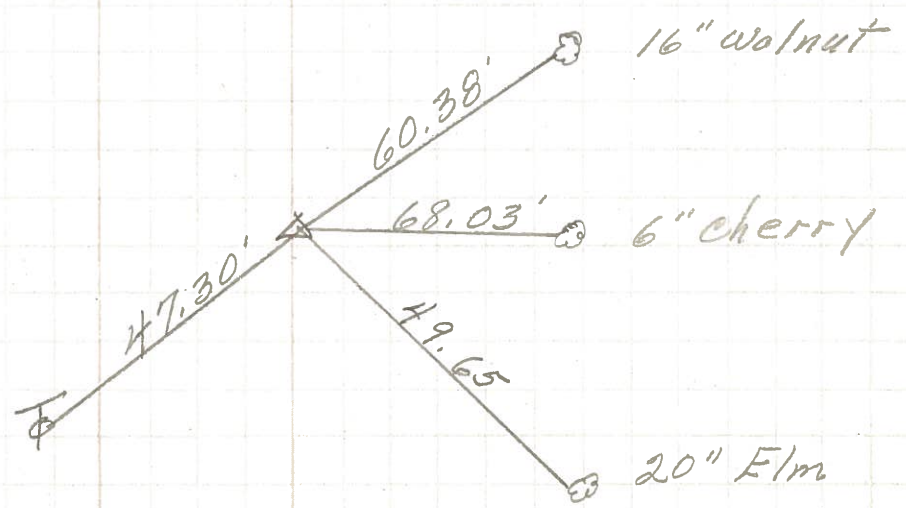
P.I. **8**
P.K. Nail
Lt. edge of Permit.



P.C. **7.**
P.K. Nail



R.R. spk.
on Top



PERSONNEL	TITLE	PERSONNEL	TITLE	COUNTY	DATE	WEATHER	TEMP.
Schneider		Potts		Ottawa	9-17-68	Fair	80°
Mosser				S. R. 579			
Barbour				SEC. Wood Co Line - East			
Redding							

DESCRIPTION Ties for Control Points JOB NO. _____

