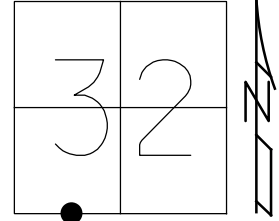


O.D.O.T. DISTRICT 2 SURVEY OFFICE (USE ONLY)

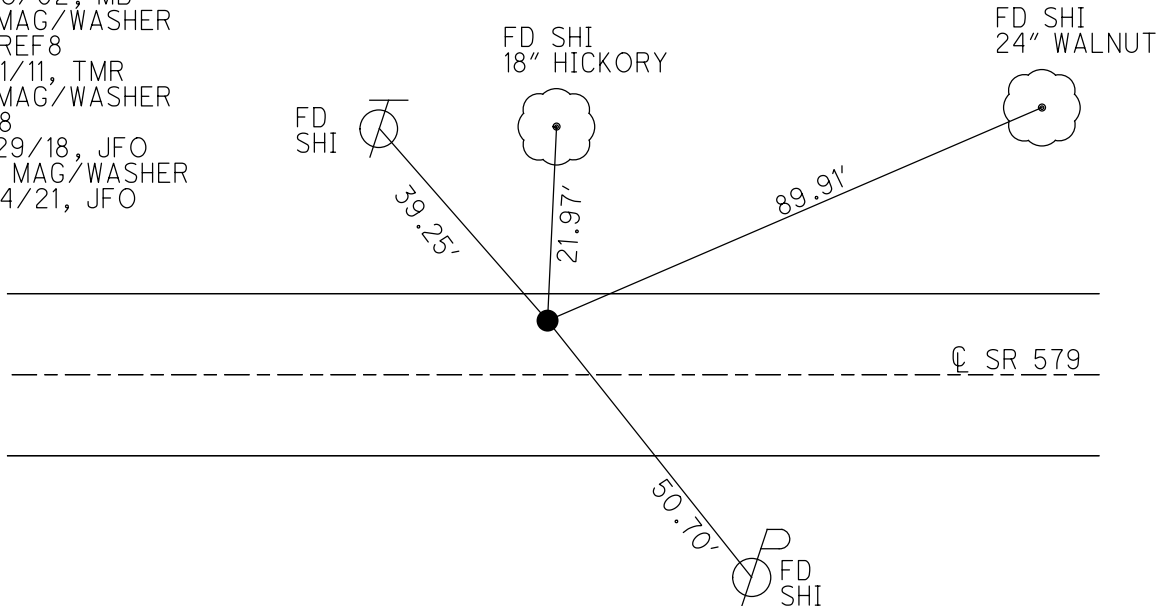
PERSONNEL _____ REFERENCE NO. 8 SHEET 11 OF 36
 NOTES RHOADES DATE 10/5/20 ROUTE SR 579
 H.C. AUBLE WEATHER SUNNY COUNTY OTTAWA
 R.C. O'DONNELL TEMP. 46° TOWNSHIP ALLEN
 DWG BY RHOADES PID 95759 SECTION 32
 T 8 N R 13 E

TYPE MONUMENT MAG/WASHER
 ON SURFACE - ~~BELOW~~ ON
 OFFSET CL PAVEMENT 10' LT : ~~RT~~
1.6' TO LT EDGE PAVEMENT
 STATION: 94+97.33



HORZ. DATUM: NAD83 2011 GEOID: NAVD88 2012A
 GRID: NORTHING: 706557.458 EASTING: 1727534.001

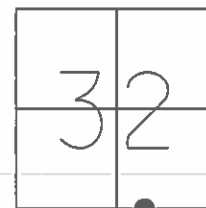
RECORD: P.I.
 STA. 95+00
 $\Delta = 9^\circ 00' RT$
 SET P.K./WASHER
 9/20/77
 FD P.K./WASHER
 9/19/02, MB
 SET MAG/WASHER
 11/26/02, MB
 FD MAG/WASHER
 579REF8
 6/21/11, TMR
 FD MAG/WASHER
 REF8
 10/29/18, JFO
 SET MAG/WASHER
 8/24/21, JFO



O.D.O.T. DISTRICT 2 SURVEY OFFICE (USE ONLY)

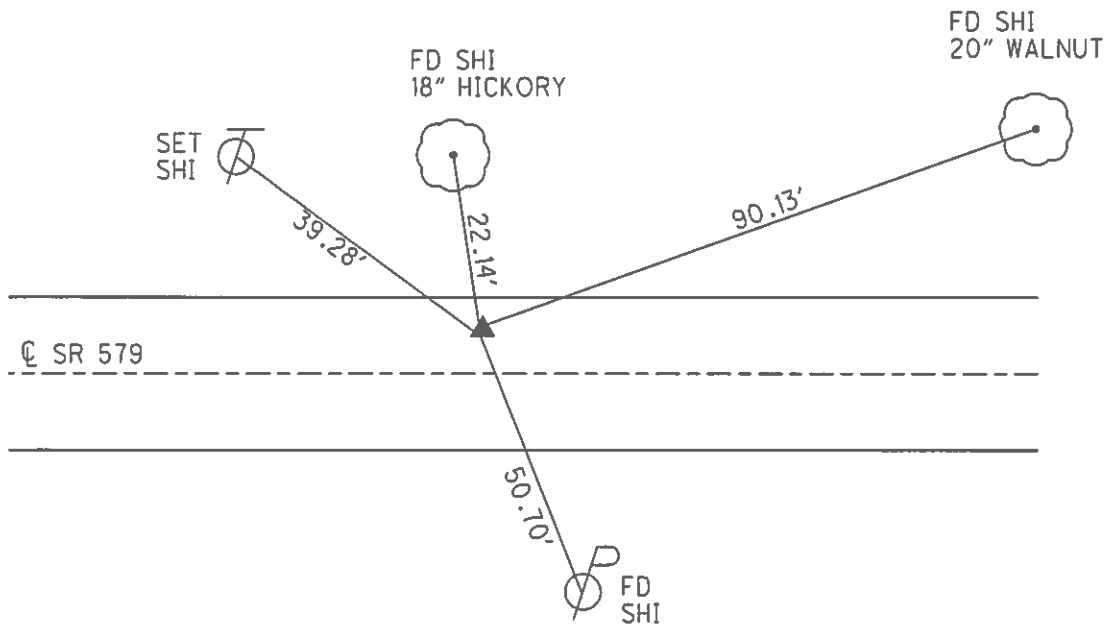
PERSONNEL	REFERENCE NO.	<u>8</u>	SHEET	<u>9</u>	OF	<u>12</u>
NOTES	FINGER	DATE	<u>6/21/11</u>	ROUTE	<u>SR 579</u>	
H.C.	<u>ROUSOS</u>	WEATHER	<u>SUNNY</u>	COUNTY	<u>OTTAWA</u>	
R.C.	<u>FINGER</u>	TEMP.	<u>91°</u>	TOWNSHIP	<u>ALLEN</u>	
				SECTION	<u>32</u>	
				T	<u>8</u>	R
					<u>N</u>	
						<u>E</u>

TYPE MONUMENT MAG/WASHER
 ON SURFACE - ~~BELOW~~ ON
 LEFT - ☉ PAV'T - ~~RIGHT~~ 10'
1.6' TO LT EDGE PAVEMENT
 S.L.M. 95+00



GRID: NORTHING: 706557.343 EASTING: 1727533.705

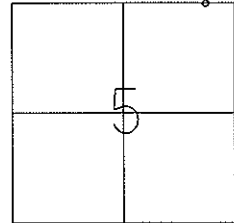
RECORD: P.I.
 SET P.K./WASHER
 09/20/77
 FD P.K./WASHER
 09/19/02
 SET MAG/WASHER
 11/26/02, MB
 FD MAG/WASHER
 579REF8
 6/21/11, TMR



O.D.O.T. DISTRICT 2 SURVEY OFFICE

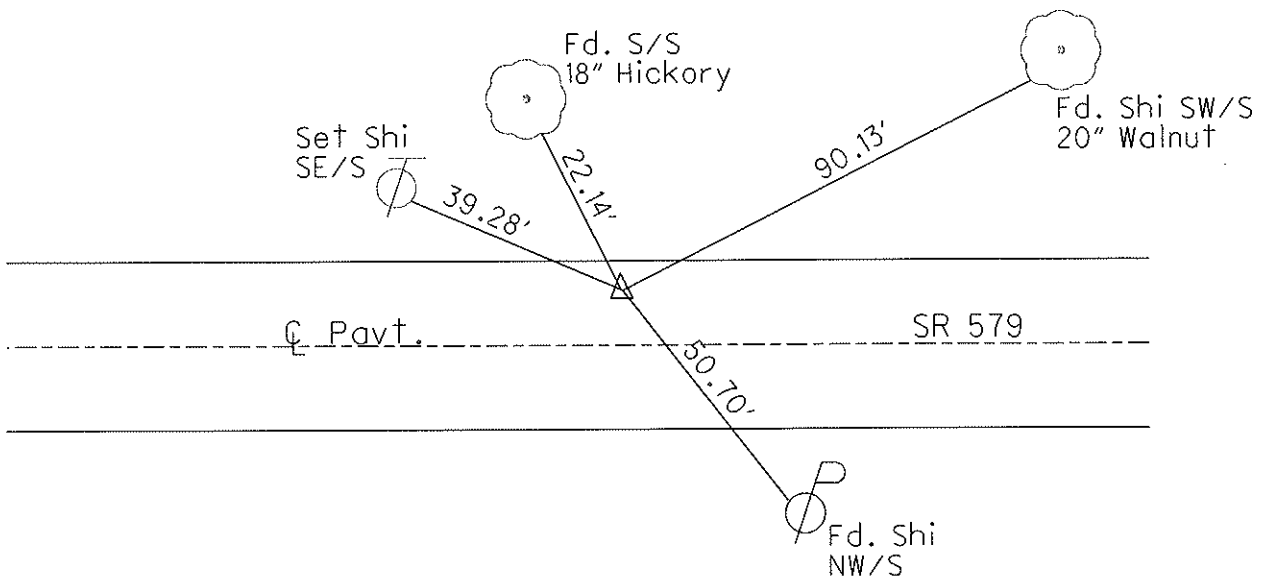
PERSONNEL	REFERENCE NO. <u>8</u>	SHEET <u> </u> OF <u> </u>
NOTES <u>Finger</u>	DATE <u>6/21/11</u>	ROUTE <u>SR 579</u>
H.C. <u>Rousos</u>	WEATHER <u>Sunny</u>	COUNTY <u>Ottawa</u>
R.C. <u>Finger</u>	TEMP. <u>91°F</u>	TOWNSHIP <u>Allen</u>
		SECTION <u>5</u>
		T <u>8</u> N R <u>13</u> E

TYPE MONUMENT Mag Nail/Washer
 ON SURFACE - ~~BELOW~~ Surface
 LEFT - ☉ PAV'T - ~~RIGHT~~ 10' Lt. ☉
1.6' TO LT. EDGE PAVEMENT
 S.L.M. 95+00



Grid: Northing: 706557.343 Easting: 1727533.705

- Record
 P.I.
 Re-set PK Nail
 9/20/77
 Fd. PK/Washer
 9/19/02
 Re-set Mag Nail/Washer
 11/26/02
 M.B.
 Fd. Mag/Washer
 6/21/11



O.D.O.T. DISTRICT 2 SURVEY OFFICE

PERSONNEL _____

REFERENCE NO. 8

SHEET 8 OF 34

NOTES BARNHISEL

H.C. CANTERBURY

R.C. BARNHISEL

DATE 9-19-02

WEATHER SUN

TEMP. +75°

ROUTE S.R. 579

COUNTY OTTAWA

TOWNSHIP ALLEN

SECTION 5

T 8 N R 13 E

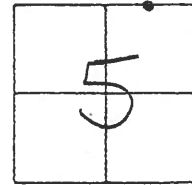
TYPE MONUMENT PK / WASHER

ON SURFACE - ~~BELOW~~ SURFACE

LEFT-~~☉~~ PAV'T. - ~~RIGHT~~ 10' LT ☉

1.6' TO LT. EDGE PAVEMENT

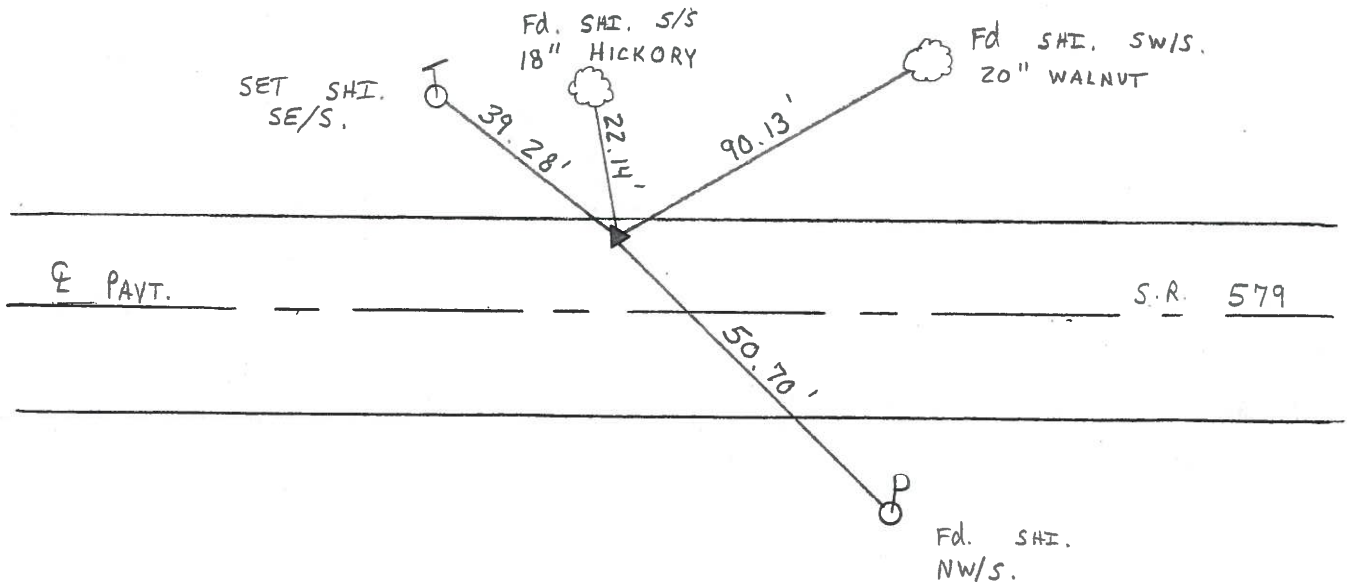
S.L.M. 95 + 00



P.I.
Re-set P.K. Nail
9-20-77

RESET MAG NAIL / WASHER
11-26-02 ✓ FD
M.B.

GPS
579 REF 8



O.D.O.T. DISTRICT 2 SURVEY OFFICE

PERSONNEL

REFERENCE NO. 8

SHEET 8 OF 34

NOTES BARNHISEL

H.C. CANTERBURY

R.C. BARNHISEL

DATE 9-19-02

WEATHER SUN

TEMP. +75°

ROUTE S.R. 579

COUNTY OTTAWA

TOWNSHIP ALLEN

SECTION 5

T 8 N R 13 E

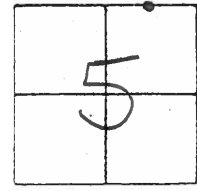
TYPE MONUMENT PK / WASHER

ON SURFACE - ~~BELOW~~ SURFACE

LEFT - ♀ PAV'T. - ~~RIGHT~~ 10' LT ♀

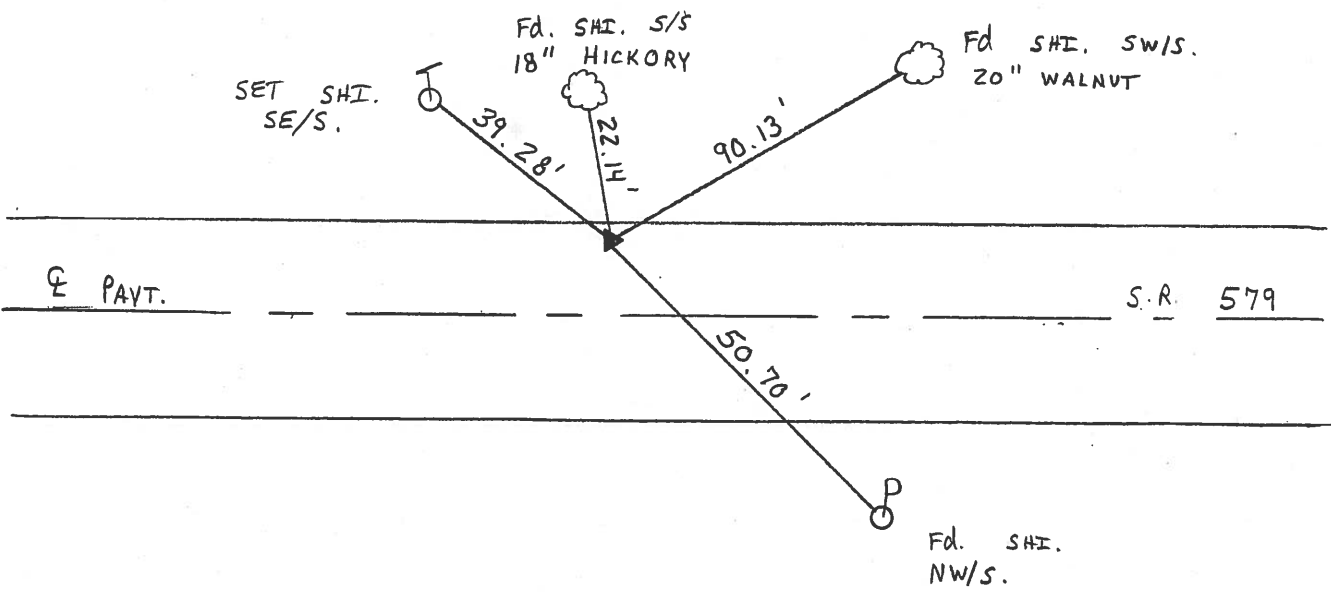
I.G. TO LT. EDGE PAVEMENT

S.L.M. 95 + 00



P.I.
Re-set P.K. Nail
9-20-77

RESET MAG NAIL / WASHER
11-26-02
M.B.



O.D.O.T. DISTRICT 2 SURVEY OFFICE

PERSONNEL

REFERENCE NO. 8

SHEET 8 OF

NOTES CRONIN

H.C.

DATE 9-20-77

ROUTE SR 579

R.C.

WEATHER

COUNTY OTTAWA

TEMP.

TOWNSHIP ALLEN

SECTION 5

T 8 N R 13 E

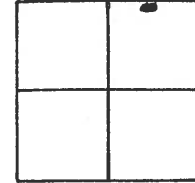
TYPE MONUMENT PK

ON SURFACE - BELOW

LEFT - - RIGHT EDGE

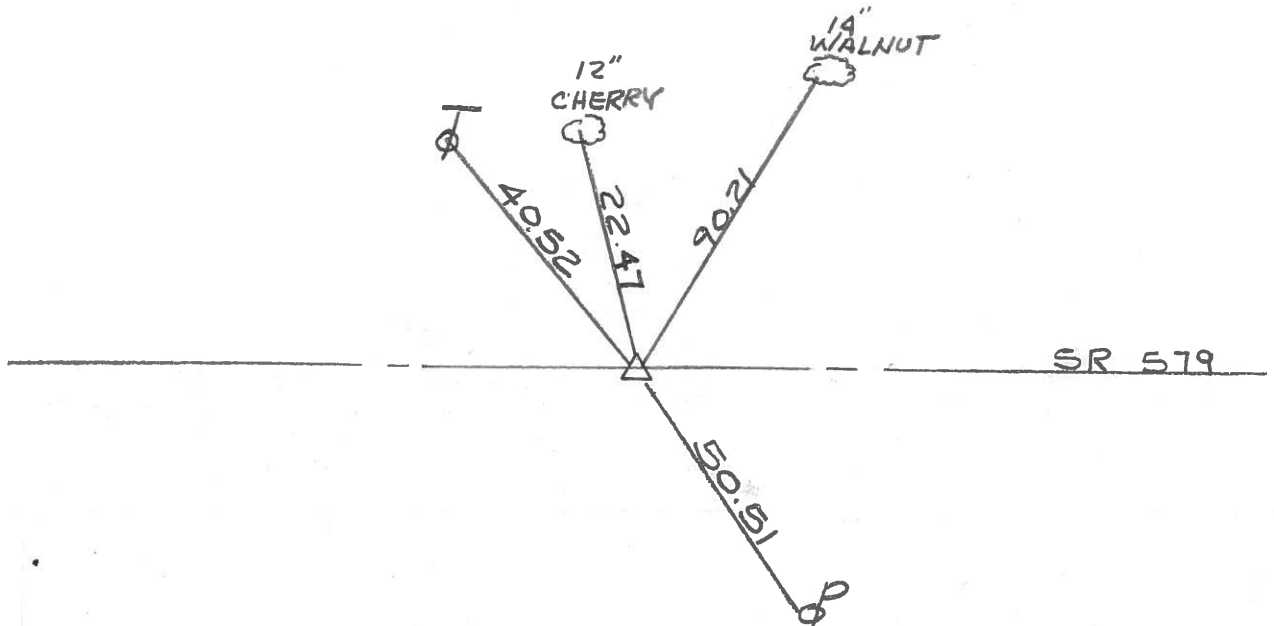
 TO EDGE PAVEMENT

S.L.M.



P.I. RESE PK. NAIL

9-20-77

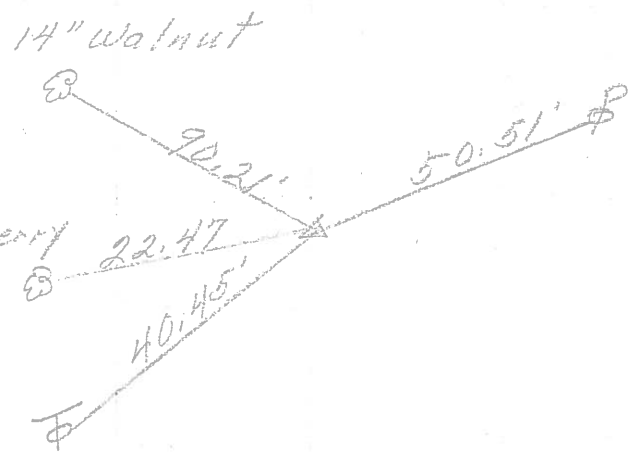


DRAWN BY
W.M. LUCE
5-7-85

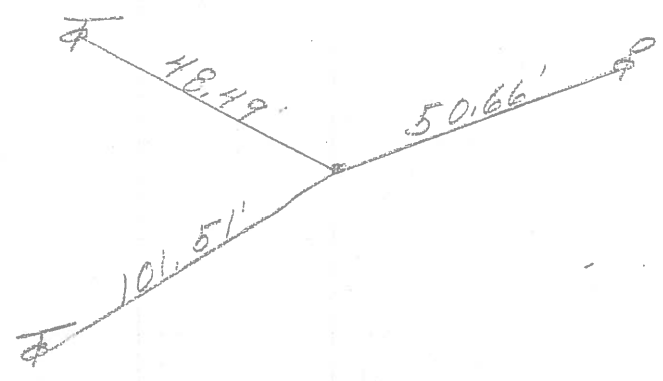
PERSONNEL	TITLE	PERSONNEL	TITLE	COUNTY	DATE	S. R.	WEATHER	SEC.	TEMP.	DESCRIPTION	JOB NO.
				Ottawa	9-17-71	579	Fair	5532	60°	Allen Twp.	

LEFT CENTER LINE RIGHT

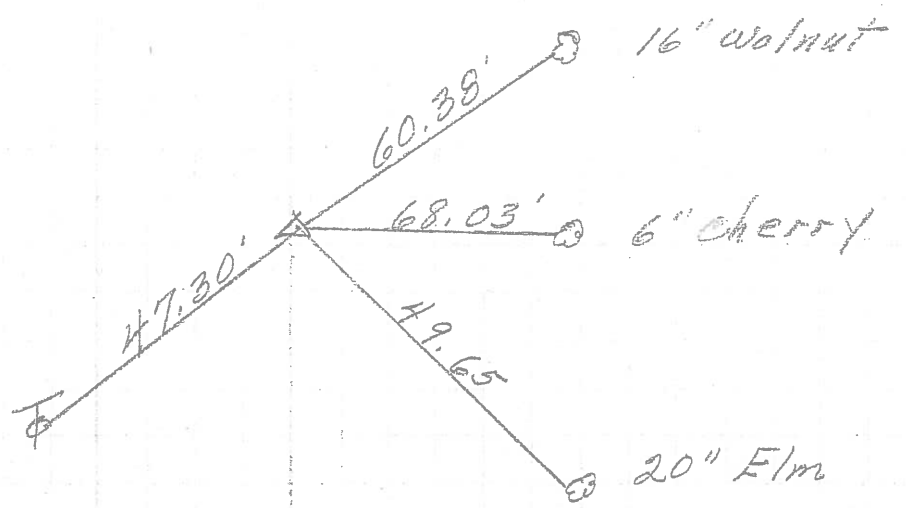
P.I. 8.
 P.K. Nail
 Lt. edge of Permit.



P.C. 7
 P.K. Nail



R.R. spk.
 on Top



PERSONNEL	TITLE	PERSONNEL	TITLE	COUNTY	DATE	WEATHER	TEMP.
Schneider		Potts		Ottawa	9-17-68	Fair	80°
Mosser				S. R. 579			
Barbour				SEC. Wood Co Line - East			
Redding							

DESCRIPTION Ties for Control Points JOB NO. _____

