

O.D.O.T. DISTRICT 2 SURVEY OFFICE (USE ONLY)

PERSONNEL

REFERENCE NO. 12

SHEET 15 OF 36

NOTES RHOADES

DATE 10/5/20

ROUTE SR 579

H.C. AUBLE

WEATHER SUNNY

COUNTY OTTAWA

R.C. O'DONNELL

TEMP. 46°

TOWNSHIP ALLEN

SECTION 4

DWG BY RHOADES

PID 95759

T 7 N R 13 E

TYPE MONUMENT MAG/WASHER

ON SURFACE - ~~BELOW~~ ON

OFFSET Q PAVEMENT ON LT : RT

11.7' TO LT EDGE PAVEMENT

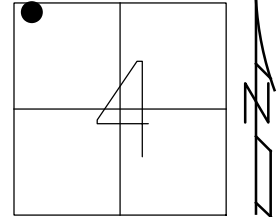
STATION: 116+48.06

HORIZ.DATUM: NAD83 2011

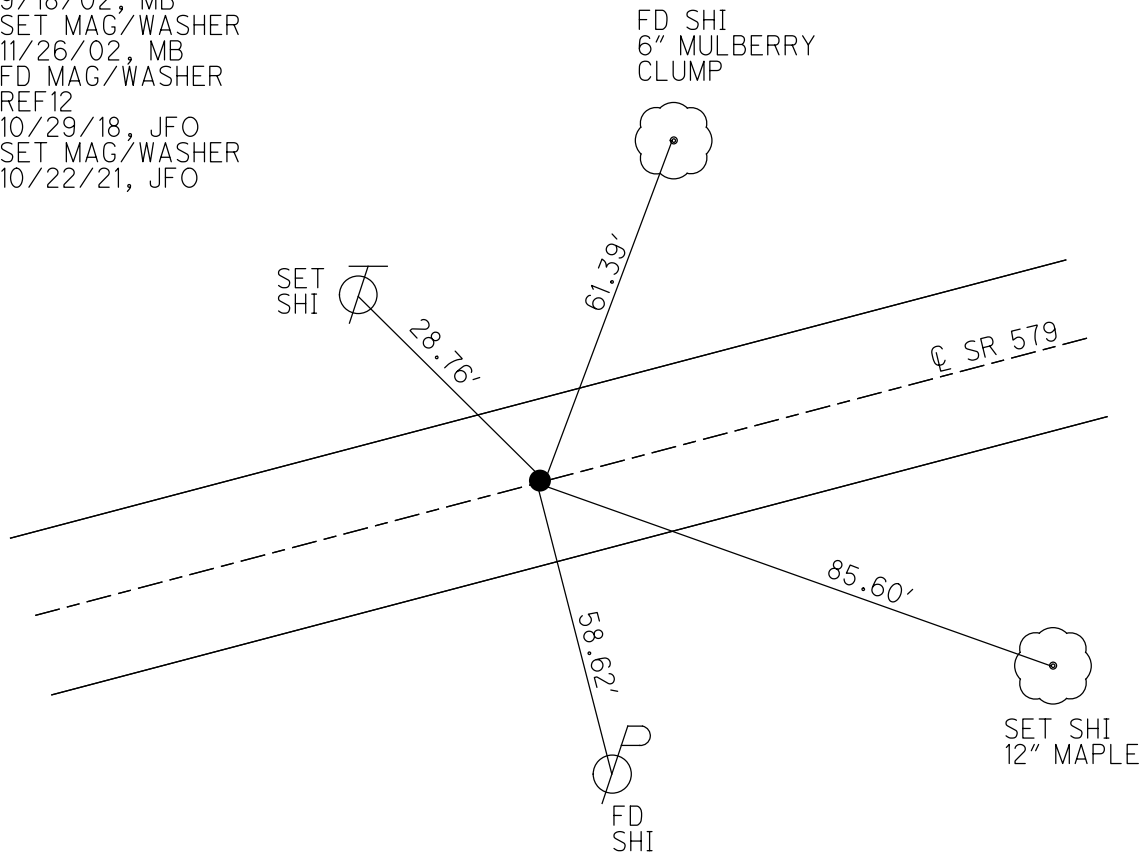
GEOID: NAVD88 2012A

GRID: NORTHING: 706573.594

EASTING: 1729666.735



RECORD: P.C.
 SET P.K.NAIL
 9/20/77
 FD P.K./WASHER
 9/18/02, MB
 SET MAG/WASHER
 11/26/02, MB
 FD MAG/WASHER
 REF12
 10/29/18, JFO
 SET MAG/WASHER
 10/22/21, JFO



O.D.O.T. DISTRICT 2 SURVEY OFFICE

PERSONNEL

REFERENCE NO. 12

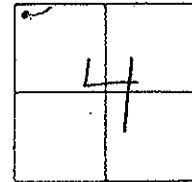
SHEET 12 OF 34

NOTES BARNHISEL
 H.C. CANTERBURY
 R.C. HOMAN
BROWN P

DATE 9-18-02
 WEATHER SUN
 TEMP. +75

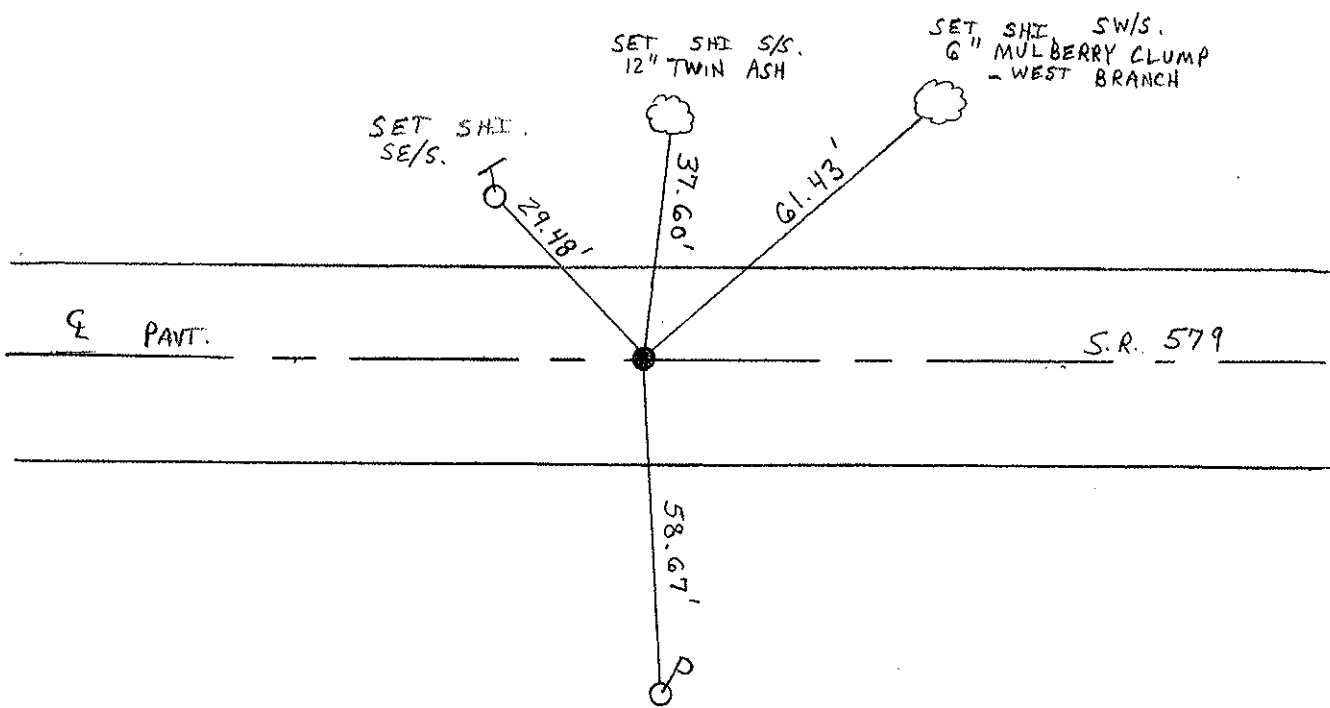
ROUTE S.R. 579
 COUNTY OTTAWA
 TOWNSHIP ALLEN
 SECTION 4
T. 8 N R. 13 E

TYPE MONUMENT P.K. NAIL / WASHER
 ON ~~SURFACE~~ - BELOW 3" DOWN
~~LEFT - & PAV'T. - RIGHT~~ ON &
11.7' TO LT EDGE PAVEMENT
 S.L.M. 116 + 49



P.C.
 P.K. nail
 1977

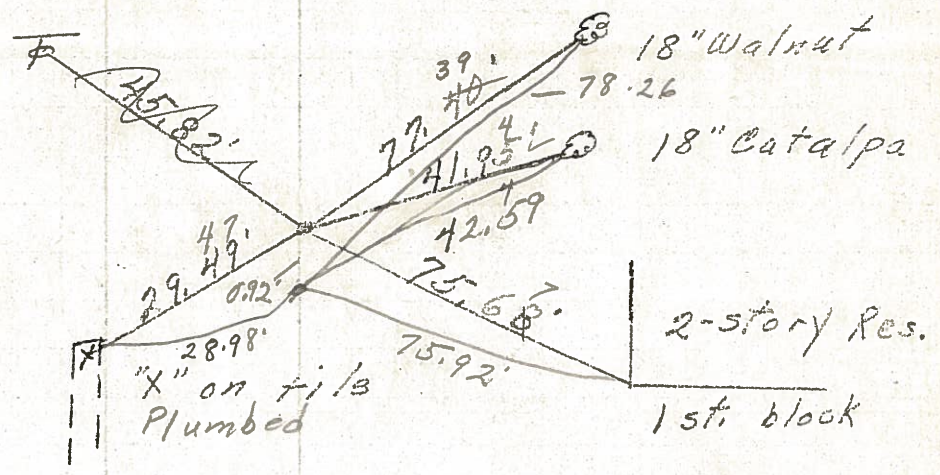
RESET MAG NAIL / WASHER
 11-26-02
 M.B.



PERSONNEL	TITLE	PERSONNEL	TITLE	COUNTY	DATE
				Ottawa	5-3-77
				S. R. 579	9-17-71
				SEC. 32 E 33	WEATHER Fair
				4 E 5	TEMP 60°
DESCRIPTION <u>Allen Twp.</u>				JOB NO.	
LEFT		CENTER LINE		RIGHT	

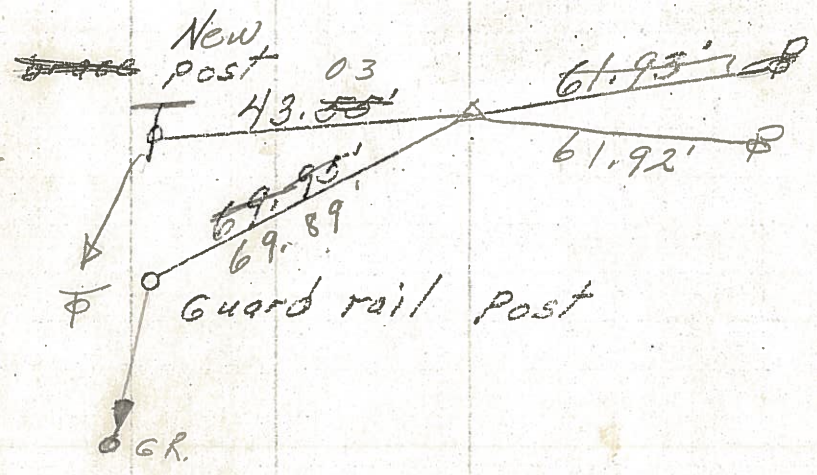
P.T.
P.K. Nail

14



P.I.
R.R. spk.
Lt. edge Perm't.

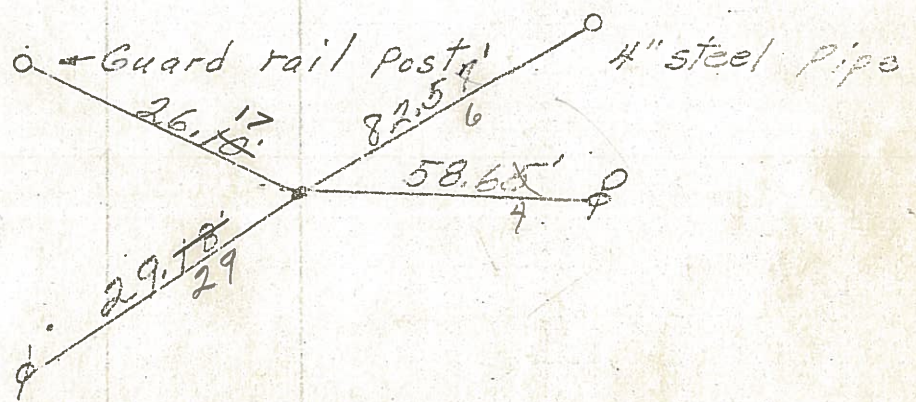
13



497-663

P.C.
P.K. Nail

12.



PERSONNEL	TITLE	PERSONNEL	TITLE
<u>Mosser</u>			
<u>Barbour</u>			
<u>Redding</u>			
<u>Potts</u>			

COUNTY Ottawa DATE 9-17-68

S. R. 579 WEATHER Fair

SEC. Wood Co. Line - East TEMP. 80°

DESCRIPTION Ties for Control Points JOB NO. _____

