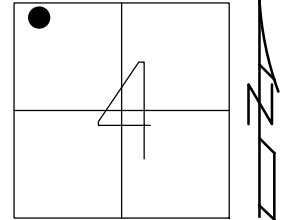


O.D.O.T. DISTRICT 2 SURVEY OFFICE (USE ONLY)

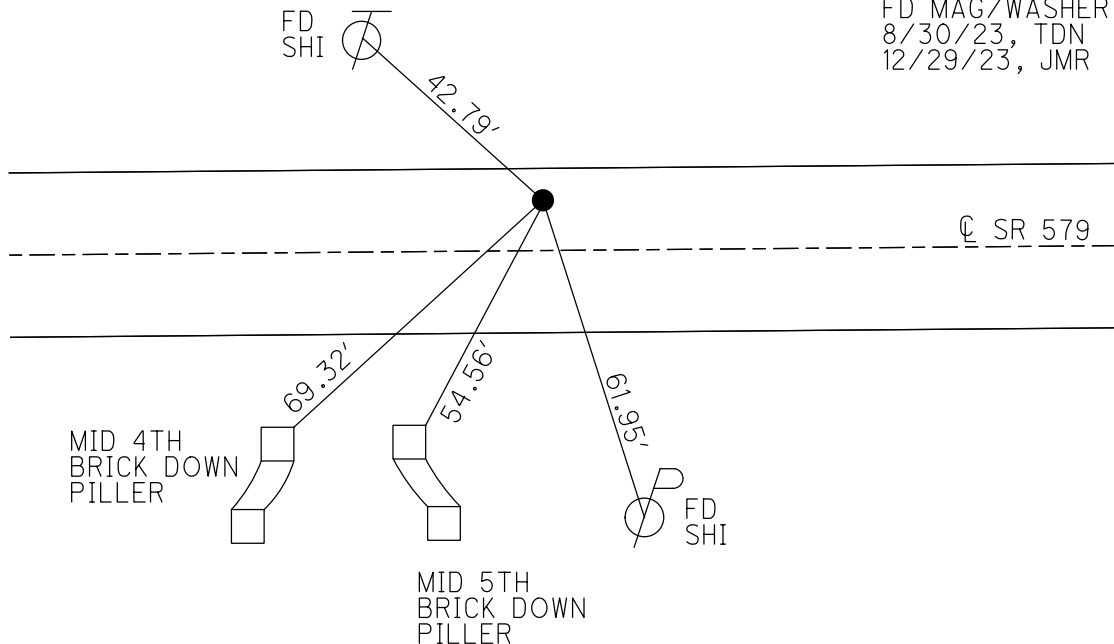
PERSONNEL _____ REFERENCE NO. 13 SHEET 16 OF 36
 NOTES MILLER DATE 12/29/23 ROUTE SR 579
 H.C. RHOADES WEATHER CLOUDY COUNTY OTTAWA
 R.C. MILLER TEMP. 39° TOWNSHIP ALLEN
 DWG BY RHOADES PID PAVING TRAIN SECTION 4
 T 7 N R 13 E

TYPE MONUMENT MAG/WASHER
 ON SURFACE - ~~BELOW~~ ON _____
 OFFSET \odot PAVEMENT 8.1' LT : ~~RT~~
4.0' TO LT EDGE PAVEMENT
 STATION: 118+74.11



HORIZ.DATUM: NAD83 2011 GEOID: NAVD88 2012A
 GRID: NORTHING: 706615.552 EASTING: 1729887.977

RECORD: P.I.
 STA.118+74
 FD R.R.SPIKE
 9/20/77
 FD R.R.SPIKE
 9/18/02, MB
 SET MAG/WASHER
 11/26/02, MB
 D.N.F.
 SHOT TIE CROSSING
 REF13
 10/29/18, JFO
 SET MAG/WASHER
 10/22/21, JFO
 FD MAG/WASHER
 8/30/23, TDN
 12/29/23, JMR



O.D.O.T. DISTRICT 2 SURVEY OFFICE (USE ONLY)

PERSONNEL

REFERENCE NO. 13

SHEET 16 OF 36

NOTES RHOADES

DATE 10/22/21

ROUTE SR 579

H.C. AUBLE

WEATHER SUNNY

COUNTY OTTAWA

R.C. O'DONNELL

TEMP. 46°

TOWNSHIP ALLEN

SECTION 4

DWG BY RHOADES

PID 95759

T 7 N R 13 E

TYPE MONUMENT MAG/WASHER

ON SURFACE - ~~BELOW~~ ON

OFFSET CL PAVEMENT 8.1' LT : ~~RT~~

4.0' TO LT EDGE PAVEMENT

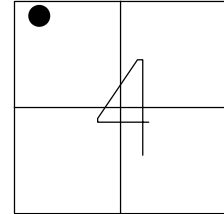
STATION: 118+74.11

HORZ.DATUM: NAD83 2011

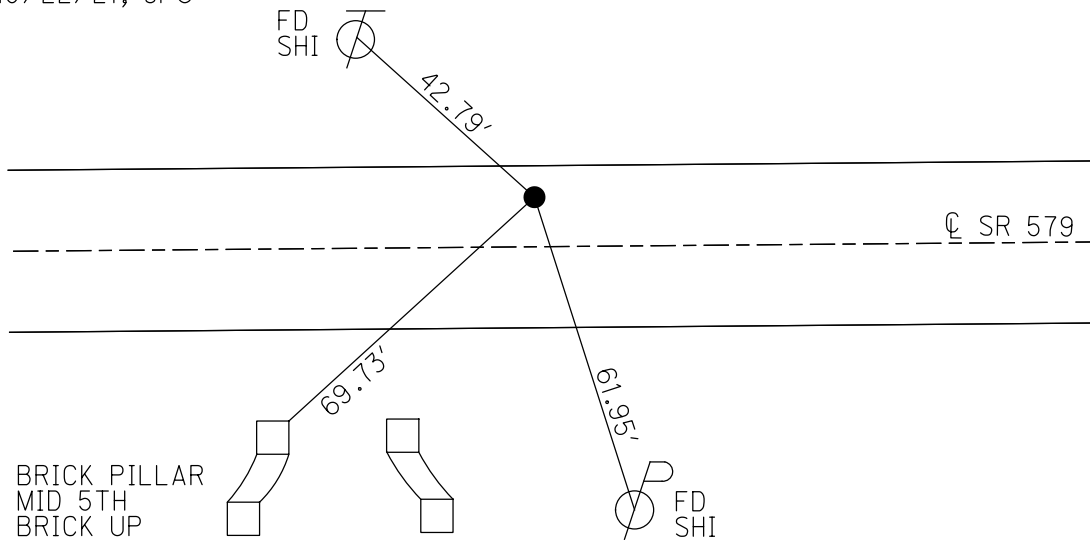
GEOID: NAVD88 2012A

GRID: NORTHING: 706615.552

EASTING: 1729887.977



RECORD: P.I.
 STA. 118+74
 FD R.R. SPIKE
 9/20/77
 FD R.R. SPIKE
 9/18/02, MB
 SET MAG/WASHER
 11/26/02, MB
 D.N.F.
 SHOT TIE CROSSING
 REF13
 10/29/18, JFO
 SET MAG/WASHER
 10/22/21, JFO



O.D.O.T. DISTRICT 2 SURVEY OFFICE

PERSONNEL

REFERENCE NO. 13

SHEET 13 OF 34

NOTES BARNHISEL

H.C. CANTERBURY

R.C. HOMAN

BROWN P

DATE 9-18-02

WEATHER SUN

TEMP. +75°

ROUTE S.R. 579

COUNTY OTTAWA

TOWNSHIP ALLEN

SECTION 4

T. 8 N R. 13 E

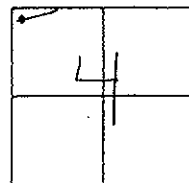
TYPE MONUMENT R.R. SPK.

ON SURFACE - ~~BELOW~~ SURFACE

LEFT - & PAV'T. - ~~RIGHT~~ 8.1' LT &

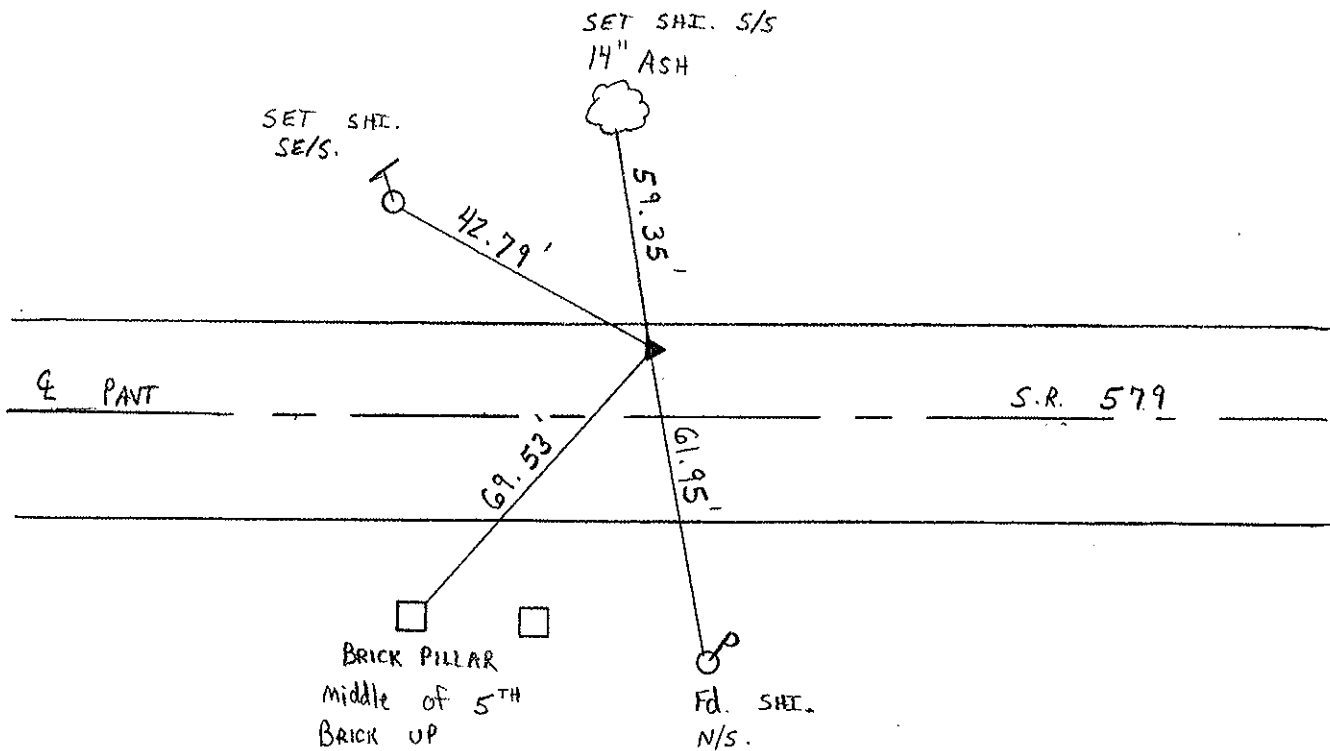
4.0' TO LT EDGE PAVEMENT

S.L.M. 118 + 74



RECORD: P.I. - R.R. SPK.
1977

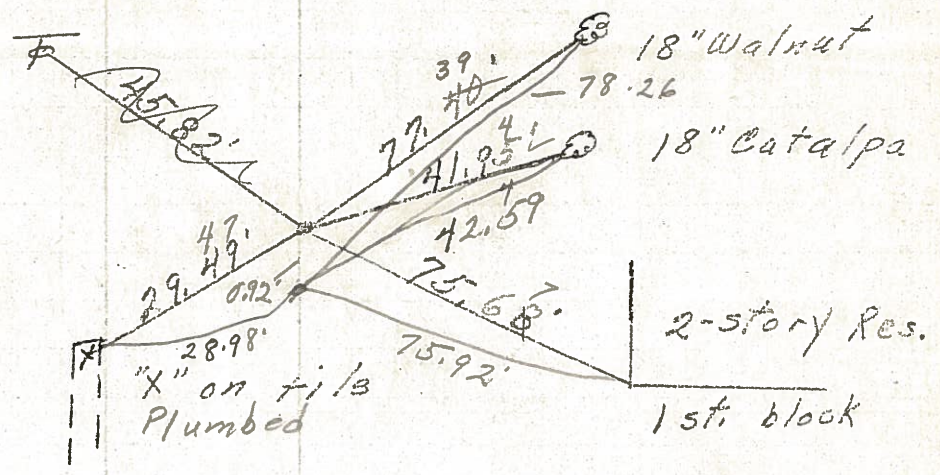
RESET MAG NAIL/WASHER
11-26-02
M.B.



PERSONNEL	TITLE	PERSONNEL	TITLE	COUNTY	DATE
				Ottawa	5-3-77
				S. R. 579	9-17-71
				SEC. 32 E 33	WEATHER Fair
				4 E 5	TEMP 60°
DESCRIPTION	Allen Twp.			JOB NO.	
	LEFT	CENTER LINE	RIGHT		

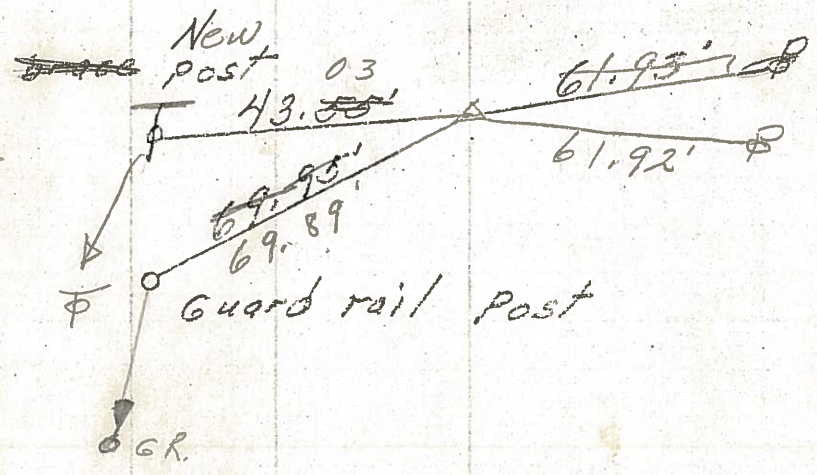
P.T.
P.K. Nail

14



P.I.
R.R. spk.
Lt. edge Perm't.

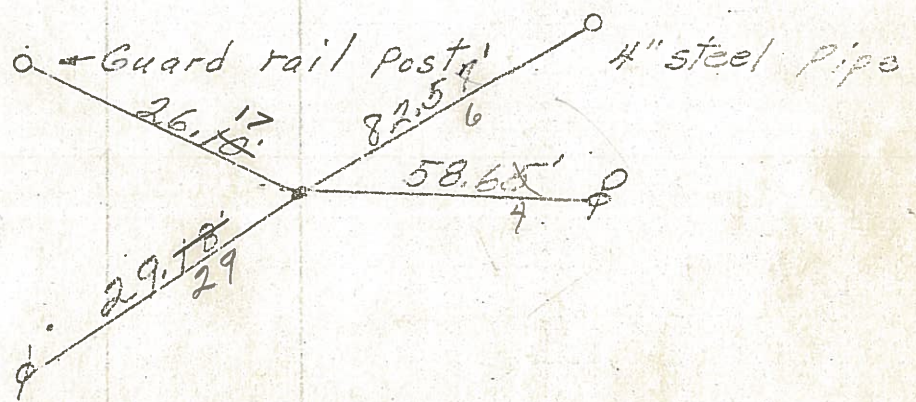
13



497-663

P.C.
P.K. Nail

12.



PERSONNEL	TITLE	PERSONNEL	TITLE
<u>Mosser</u>	_____	_____	_____
<u>Barbour</u>	_____	_____	_____
<u>Redding</u>	_____	_____	_____
<u>Potts</u>	_____	_____	_____

COUNTY Ottawa DATE 9-17-68

S. R. 579 WEATHER Fair

SEC. Wood Co. Line - East TEMP. 80°

DESCRIPTION Ties for Control Points JOB NO. _____

