

O.D.O.T. DISTRICT 2 SURVEY OFFICE (USE ONLY)

PERSONNEL

REFERENCE NO. 14

SHEET 17 OF 36

NOTES MILLER

DATE 12/29/23

ROUTE SR 579

H.C. RHOADES

WEATHER CLOUDY

COUNTY OTTAWA

R.C. MILLER

TEMP. 39°

TOWNSHIP ALLEN

SECTION 4

DWG BY RHOADES

PID PAVING TRAIN

T 7 N R 13 E

TYPE MONUMENT MAG/WASHER

ON SURFACE - ~~BELOW~~ ON

OFFSET 1.0' ± : RT

10.5' TO RT EDGE PAVEMENT

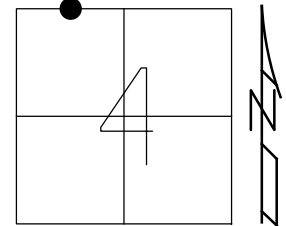
STATION: 120+99.21

HORZ. DATUM: NAD83 2011

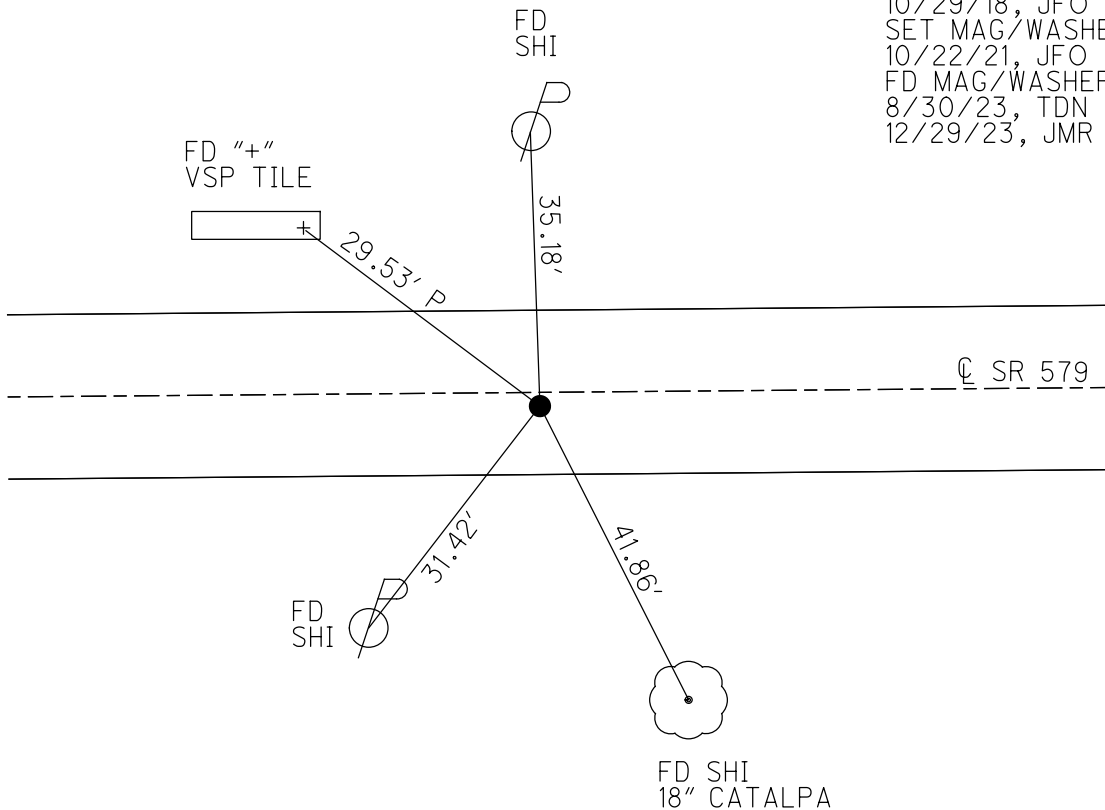
GEOID: NAVD88 2012A

GRID: NORTHING: 706622.191

EASTING: 1730113.523



RECORD: P.T.
 STA. 120+99
 FD P.K./WASHER
 9/18/02, MB
 SET MAG/WASHER
 11/26/02, MB
 FD MAG/WASHER
 REF14
 10/29/18, JFO
 SET MAG/WASHER
 10/22/21, JFO
 FD MAG/WASHER
 8/30/23, TDN
 12/29/23, JMR



O.D.O.T. DISTRICT 2 SURVEY OFFICE (USE ONLY)

PERSONNEL

REFERENCE NO. 14

SHEET 17 OF 36

NOTES RHOADES

DATE 10/5/20

ROUTE SR 579

H.C. AUBLE

WEATHER SUNNY

COUNTY OTTAWA

R.C. O'DONNELL

TEMP. 46°

TOWNSHIP ALLEN

SECTION 4

DWG BY RHOADES PID 95759

T 7 N R 13 E

TYPE MONUMENT MAG/WASHER

ON SURFACE - ~~BELOW~~ ON

OFFSET Q PAVEMENT 1.0' ~~LT~~ : RT

10.5' TO RT EDGE PAVEMENT

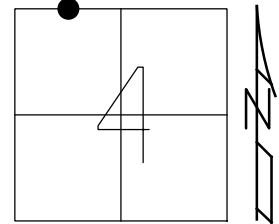
STATION: 120+99.21

HORZ.DATUM: NAD83 2011

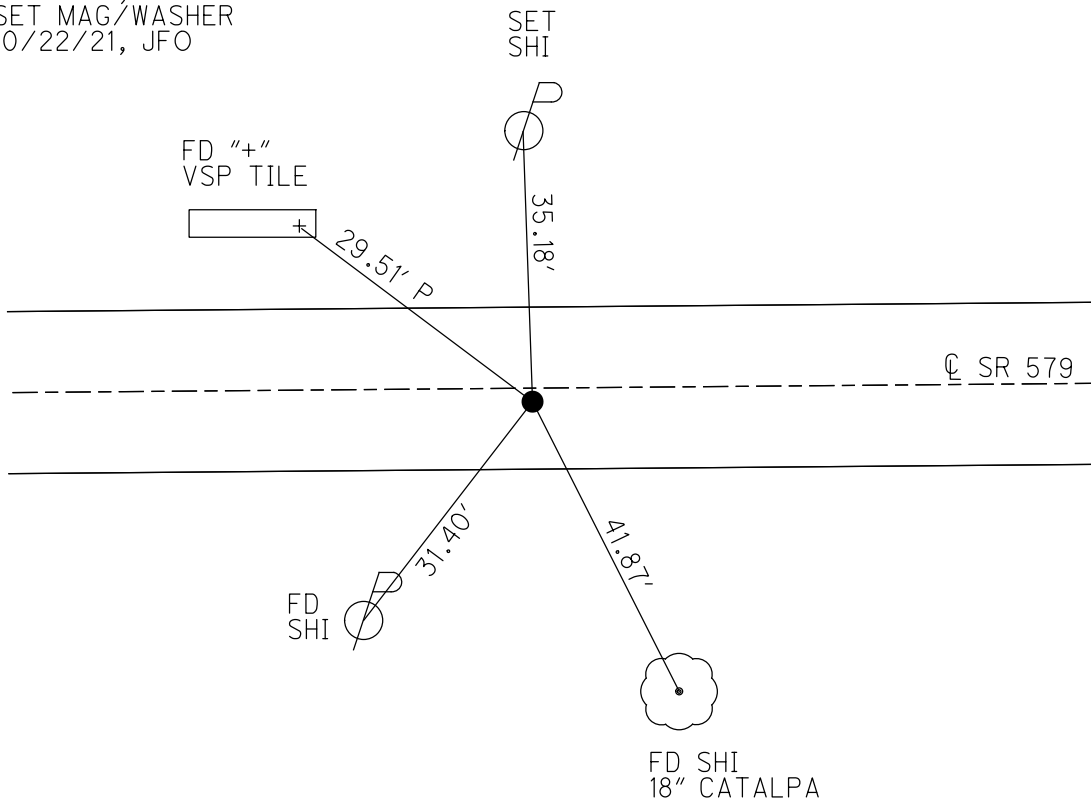
GEOID: NAVD88 2012A

GRID: NORTHING: 706622.191

EASTING: 1730113.523



RECORD: P.T.
 STA. 120+99
 FD P.K./WASHER
 9/18/02, MB
 SET MAG/WASHER
 11/26/02, MB
 FD MAG/WASHER
 REF14
 10/29/18, JFO
 SET MAG/WASHER
 10/22/21, JFO



O.D.O.T. DISTRICT 2 SURVEY OFFICE

PERSONNEL

REFERENCE NO. 14

SHEET 14 OF 34

NOTES BARNHISEL

H.C. CANTERBURY

R.C. HOMAN

Brown P

DATE 9-18-02

WEATHER SUN

TEMP. +75°

ROUTE S.R. 579

COUNTY OTTAWA

TOWNSHIP ALLEN

SECTION 4

T. 8 N R. 13 E

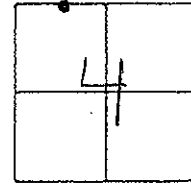
TYPE MONUMENT P.K NAIL / WASHER

ON SURFACE - ~~BELOW~~ SURFACE

~~LEFT~~ - PAV'T. - RIGHT 1' RT &

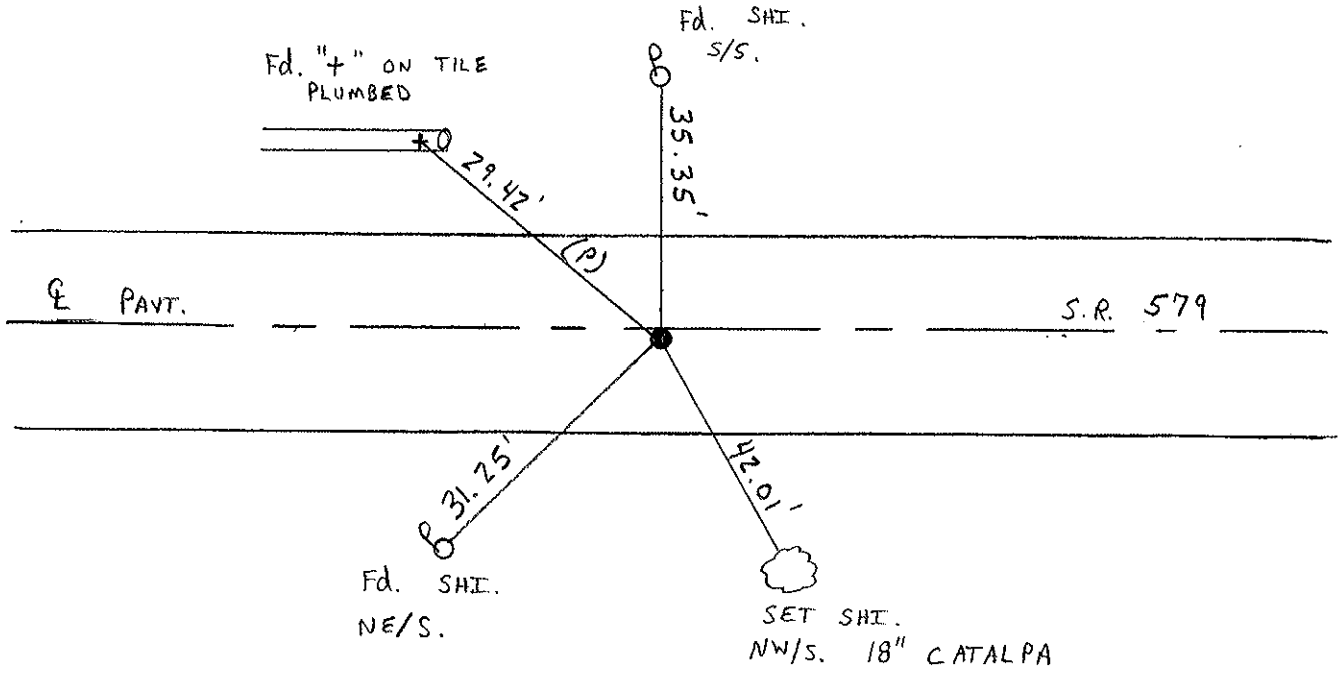
10.5' TO RT EDGE PAVEMENT

S.L.M. 120 + 99



P.T.

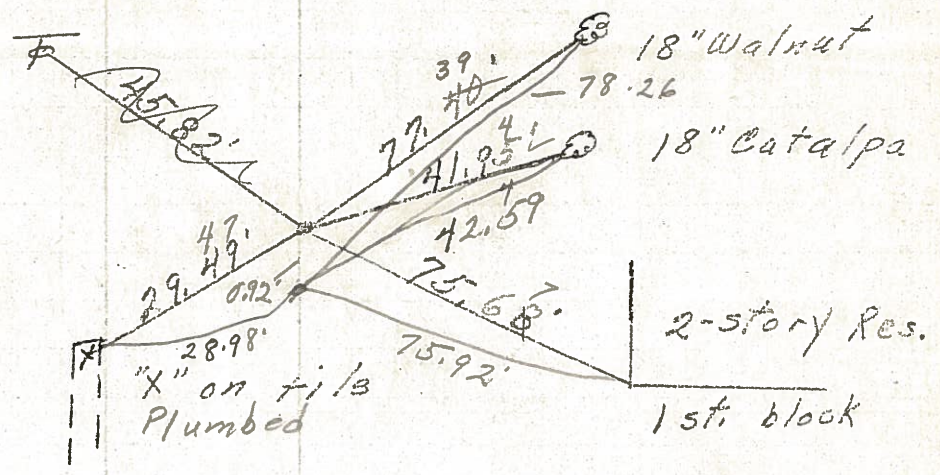
RESET MAG NAIL / WASHER
 11-26-02
 M.B.



PERSONNEL	TITLE	PERSONNEL	TITLE	COUNTY	DATE
				Ottawa	5-3-77
				S. R. 579	9-17-71
				SEC. 32 E 33	WEATHER Fair
				4 E 5	TEMP 60°
DESCRIPTION	Allen Twp.			JOB NO.	
	LEFT	CENTER LINE	RIGHT		

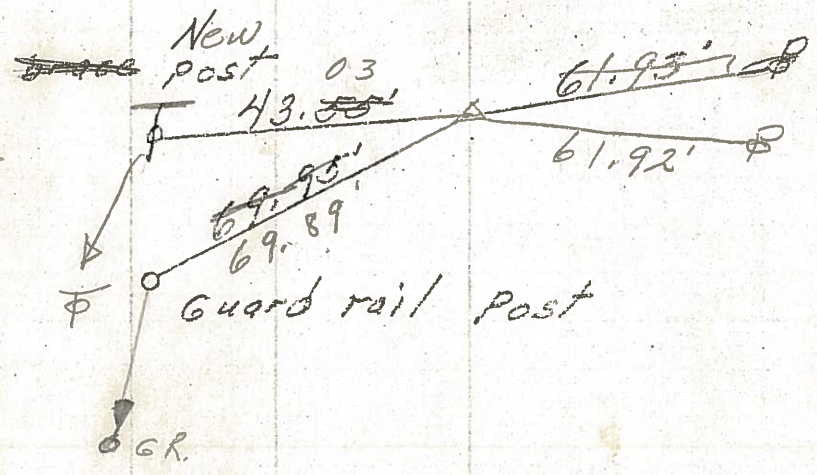
P.T.
P.K. Nail

14



P.I.
R.R. spk.
Ht. edge Perm't.

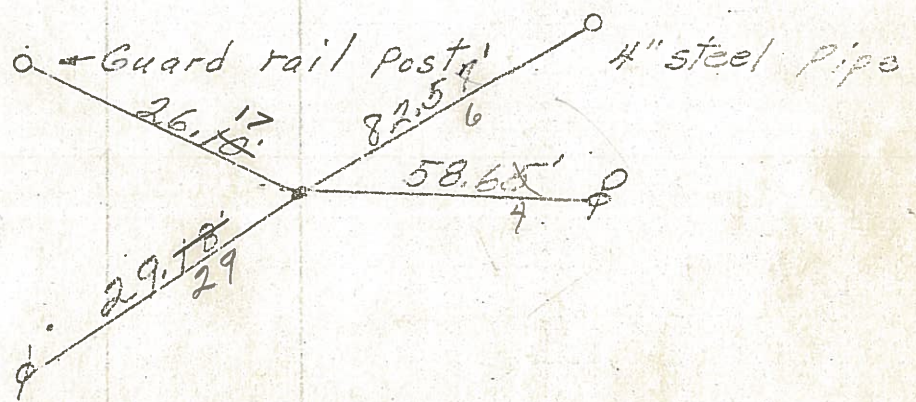
13



497-663

P.C.
P.K. Nail

12.



PERSONNEL	TITLE	PERSONNEL	TITLE
<u>Mosser</u>	_____	_____	_____
<u>Barbour</u>	_____	_____	_____
<u>Redding</u>	_____	_____	_____
<u>Potts</u>	_____	_____	_____

COUNTY Ottawa DATE 9-17-68

S. R. 579 WEATHER Fair

SEC. Wood Co. Line - East TEMP. 80°

DESCRIPTION Ties for Control Points JOB NO. _____

