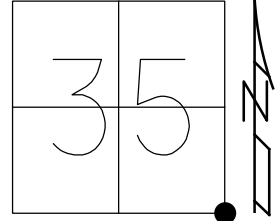


O.D.O.T. DISTRICT 2 SURVEY OFFICE (USE ONLY)

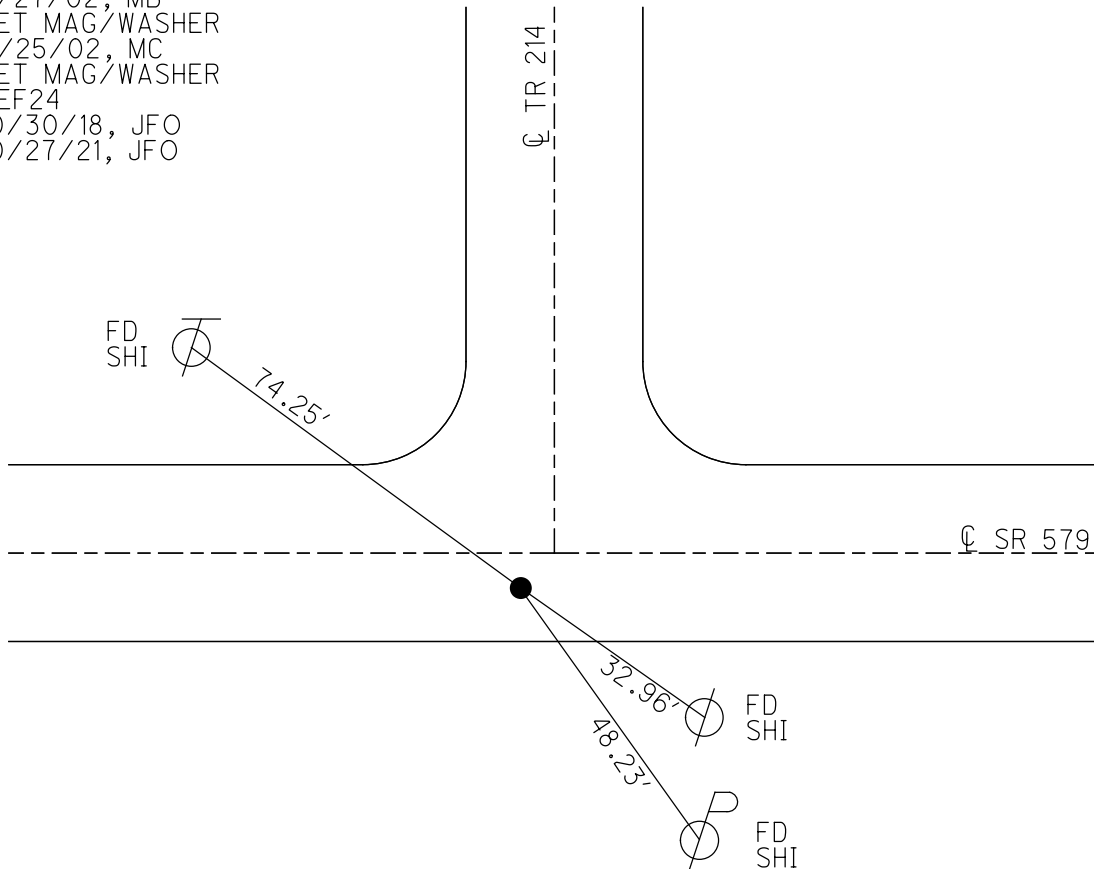
PERSONNEL \_\_\_\_\_ REFERENCE NO. 24 SHEET 28 OF 36  
 NOTES RHOADES DATE 10/30/18 ROUTE SR 579  
 H.C. AUBLE WEATHER SUNNY COUNTY OTTAWA  
 R.C. O'DONNELL TEMP. 75° TOWNSHIP ALLEN  
 DWG BY RHOADES PID 95759 SECTION 35  
 T 8 N R 13 E

TYPE MONUMENT MAG/WASHER  
 ON SURFACE - ~~BELOW~~ ON  
 OFFSET  $\perp$  PAVEMENT 6.1' ~~LT~~ : RT  
5.4' TO RT EDGE PAVEMENT  
 STATION: 265+76.19



HORZ.DATUM: NAD83 2011 GEOID: NAVD88 2012A  
 GRID: NORTHING: 706697.019 EASTING: 1744589.490

RECORD: P.O.T.  
 STA.266+03.88  
 FD LG.R.R.SPIKE  
 4" DOWN  
 8/27/02, MB  
 SET MAG/WASHER  
 11/25/02, MC  
 SET MAG/WASHER  
 REF24  
 10/30/18, JFO  
 10/27/21, JFO



# O.D.O.T. DISTRICT 2 SURVEY OFFICE

PERSONNEL

REFERENCE NO. 24

SHEET 24 OF 34

NOTES BARNHISEL

H.C. CANTERBURY

R.C. BARNHISEL

DATE 8-27-02

WEATHER SUN

TEMP. +75°

ROUTE S.R. # 579

COUNTY OTTAWA

TOWNSHIP ALLEN

SECTION 35

T 8 N R 13 E

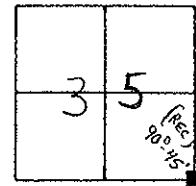
TYPE MONUMENT LG R.R. SPK.

~~ON SURFACE~~ - BELOW 4" Down

~~LEFT-C~~ PAV'T. - RIGHT 6.1' RT C / 9' W. OF C NORTH

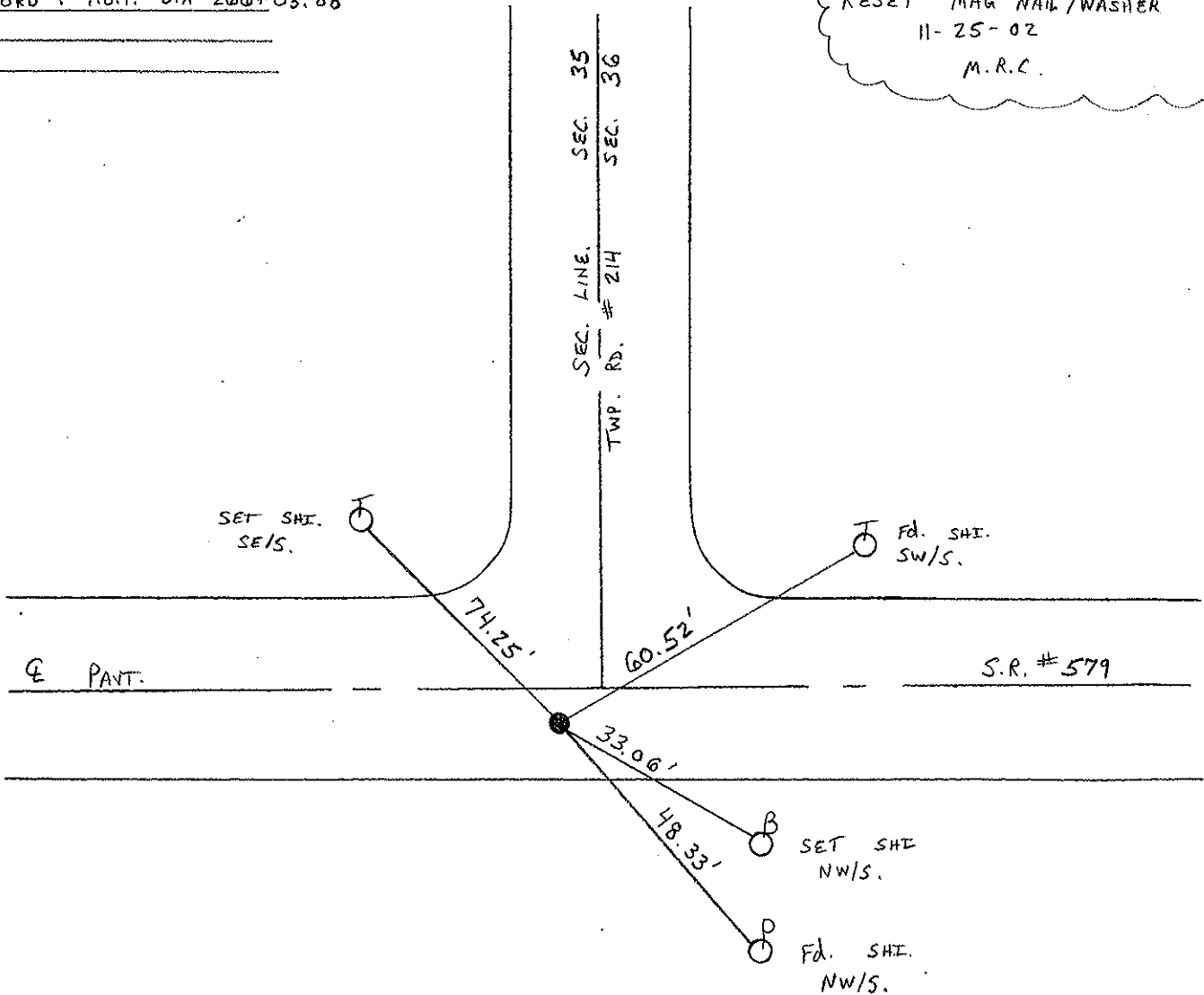
5.4' TO RT. EDGE PAVEMENT

S.L.M. 265 + 88



RECORD : P.O.T. STA 266+03.88

RESET MAG NAIL/WASHER  
 11-25-02  
 M.R.C.



O.D.O.T. DISTRICT 2 SURVEY OFFICE

Sht. 9 of

STATE ROUTE # 579

County Ottawa

Township Allen

Section 35

T8N, R13E

Personnel Cronin Schneider

Ripple Mosser

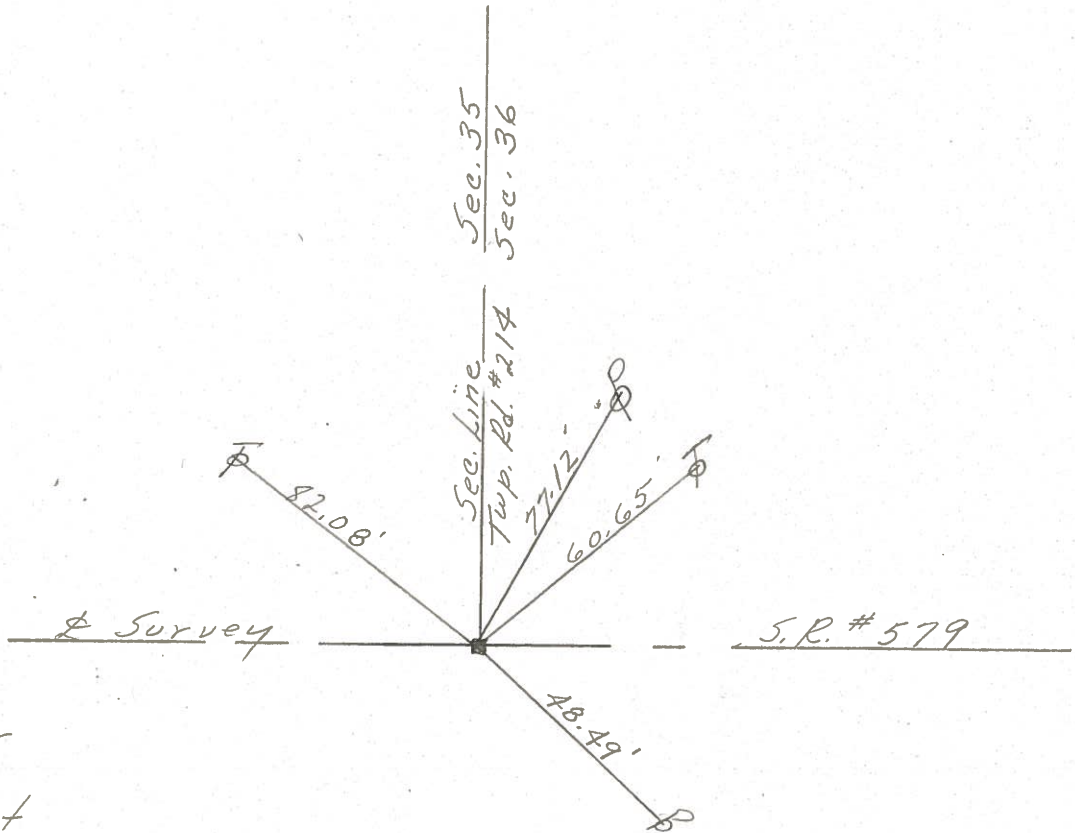
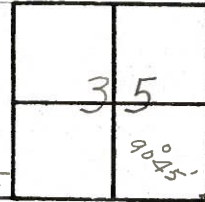
Geyman Barbour

Date 6/5/78

Weather sunny

Temp. ?

24



P.O.T.

266+03.88

set P.K. nail & washer

at top R.R. spike.

5'± Rt. of & pavement

PERSONNEL \_\_\_\_\_ TITLE \_\_\_\_\_ PERSONNEL \_\_\_\_\_ TITLE \_\_\_\_\_

COUNTY Ottawa DATE 9-18-71

S. R. 579 WEATHER Fair

SEC. 2 & 35 TEMP. 60°

DESCRIPTION Allen Twp. JOB NO. \_\_\_\_\_

LEFT CENTER LINE RIGHT

checked 4/10/78  
sunny windy  
63°

PI.  
290+98.55  
 $\Delta = 0^{\circ} 06' \text{ Rt.}$   
Mon. BOX  
3' Rt of  $\perp$

26

P.O.T.  
280+00  $\perp$  survey  
(280+00.15  $\perp$  Const.)  
 $\Delta = 0^{\circ} 04' 11'' \text{ Rt.}$   
 $\perp$  Point

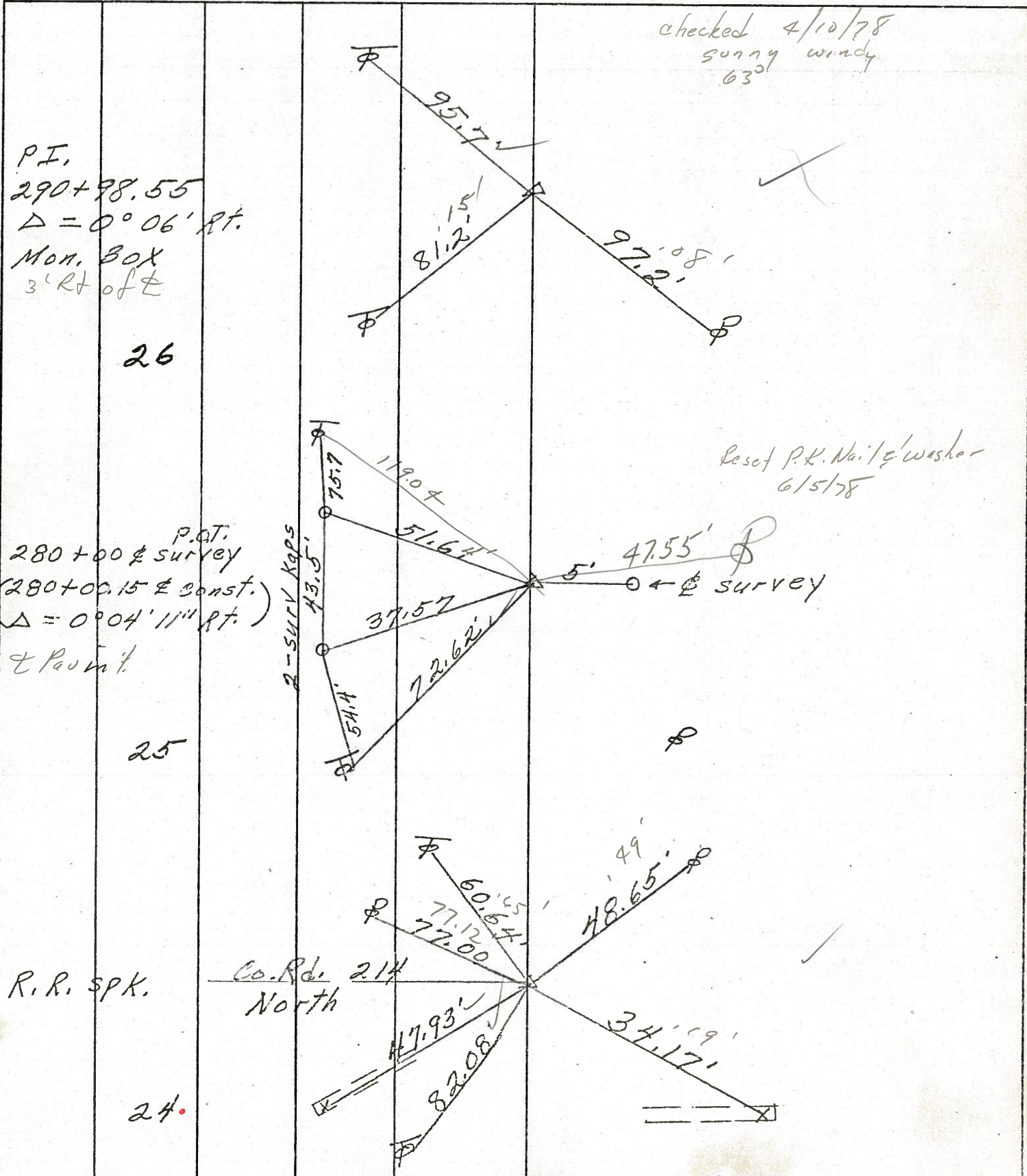
25

R.R. SPK.

Co. Rd. 214  
North

24.

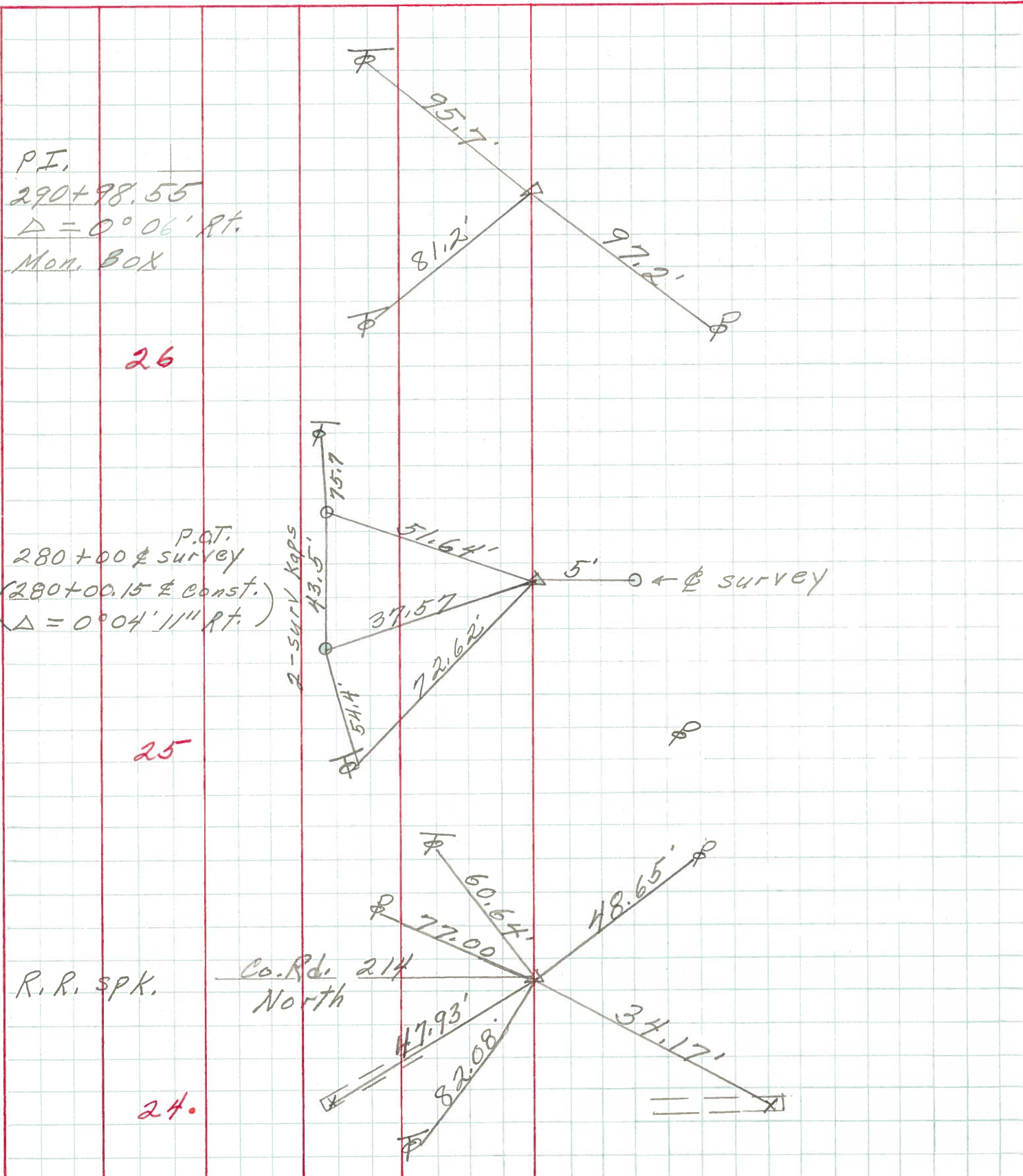
Reset P.K. Nail & Washer  
6/5/78



PERSONNEL	TITLE	PERSONNEL	TITLE

COUNTY Ottawa DATE 9-18-71  
 S. R. 579 WEATHER Fair  
 SEC. 2 & 35 TEMP. 60°

DESCRIPTION Allen Twp. LEFT CENTER LINE RIGHT JOB NO. \_\_\_\_\_



PERSONNEL	TITLE	PERSONNEL	TITLE	COUNTY	DATE
Schneider		Potts		Ottawa	7-18-68
Masser				S. R. 579	WEATHER windy
Sorbour				SEC. 2.33	TEMP. 70°
Redding					

DESCRIPTION Ties for Control Points LEFT CENTER LINE RIGHT JOB NO.

