

O.D.O.T. DISTRICT 2 SURVEY OFFICE (USE ONLY)

PERSONNEL _____ REFERENCE NO. 28 SHEET 31 OF 36

NOTES RHOADES DATE 10/7/20 ROUTE SR 579

H.C. AUBLE WEATHER WINDY COUNTY OTTAWA

R.C. O'DONNELL TEMP. 62° TOWNSHIP BENTON

DWG BY RHOADES PID 95759 SECTION 6

T 7 N R 14 E

TYPE MONUMENT MAG/WASHER

ON SURFACE - ~~BELOW~~ ON _____

OFFSET \varnothing PAVEMENT 7.1' ~~LT~~ : RT

4.8' TO RT EDGE PAVEMENT

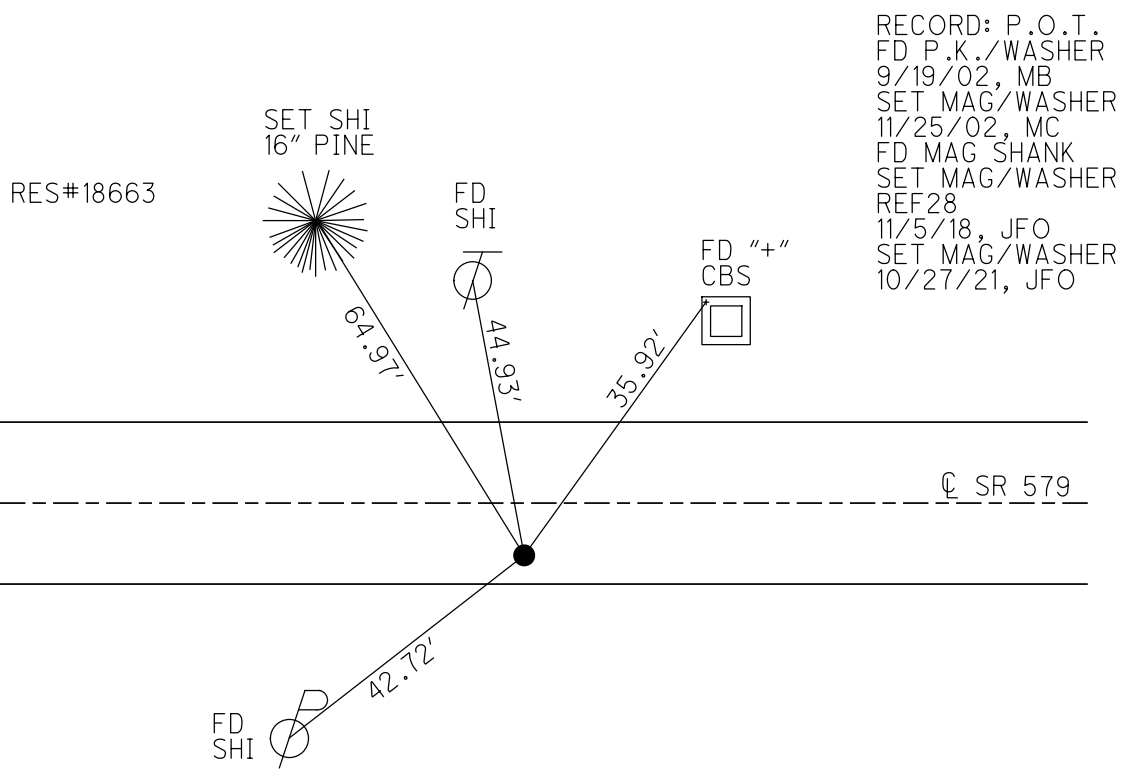
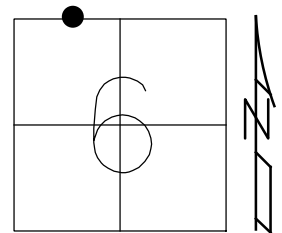
STATION: 337+72.02

HORZ.DATUM: NAD83 2011

GEOID: NAVD88 2012A

GRID: NORTHING: 706677.736

EASTING: 1751785.229



RECORD: P.O.T.
 FD P.K./WASHER
 9/19/02, MB
 SET MAG/WASHER
 11/25/02, MC
 FD MAG SHANK
 SET MAG/WASHER
 REF28
 11/5/18, JFO
 SET MAG/WASHER
 10/27/21, JFO

O.D.O.T. DISTRICT 2 SURVEY OFFICE

PERSONNEL

REFERENCE NO. 28

SHEET 29 OF 34

NOTES BARNHISEL

H.C. CANTERBURY

R.C. BARNHISEL

DATE 9-19-02

WEATHER SUN

TEMP. +75°

ROUTE S.R. 579

COUNTY OTTAWA

TOWNSHIP BENTON

SECTION 6

T 7 N R 14 E

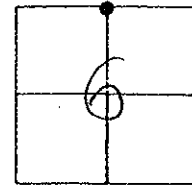
TYPE MONUMENT P.K./WASHER

ON SURFACE - ~~BELOW~~ SURFACE

~~LEFT - C PAV'T.~~ - RIGHT 7.1' RT & PAV'T.

4.8' TO RT EDGE PAVEMENT

S.L.M. 337 + 90



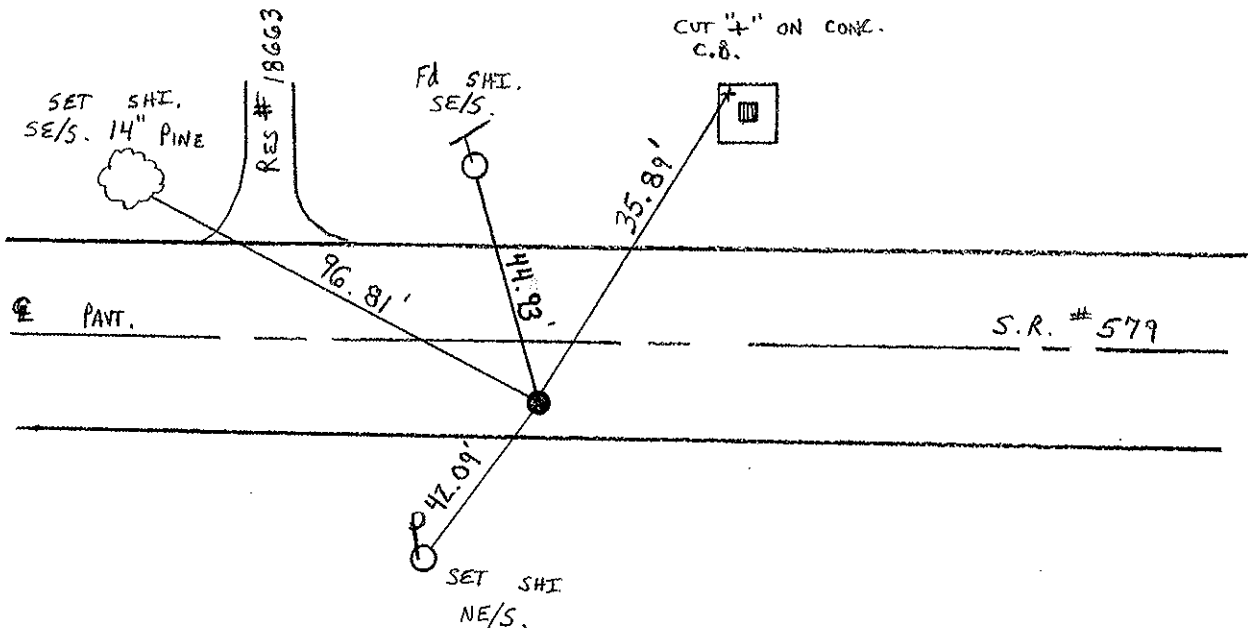
RECORD: P.O.T. $\pm 7'$ S. OF & CONST. P.I.

CONST. P.I. 338+00.12 $A = 0^\circ - 10' - 55''$ RT.

RESET MAG/WASHER

11-25-02

MC



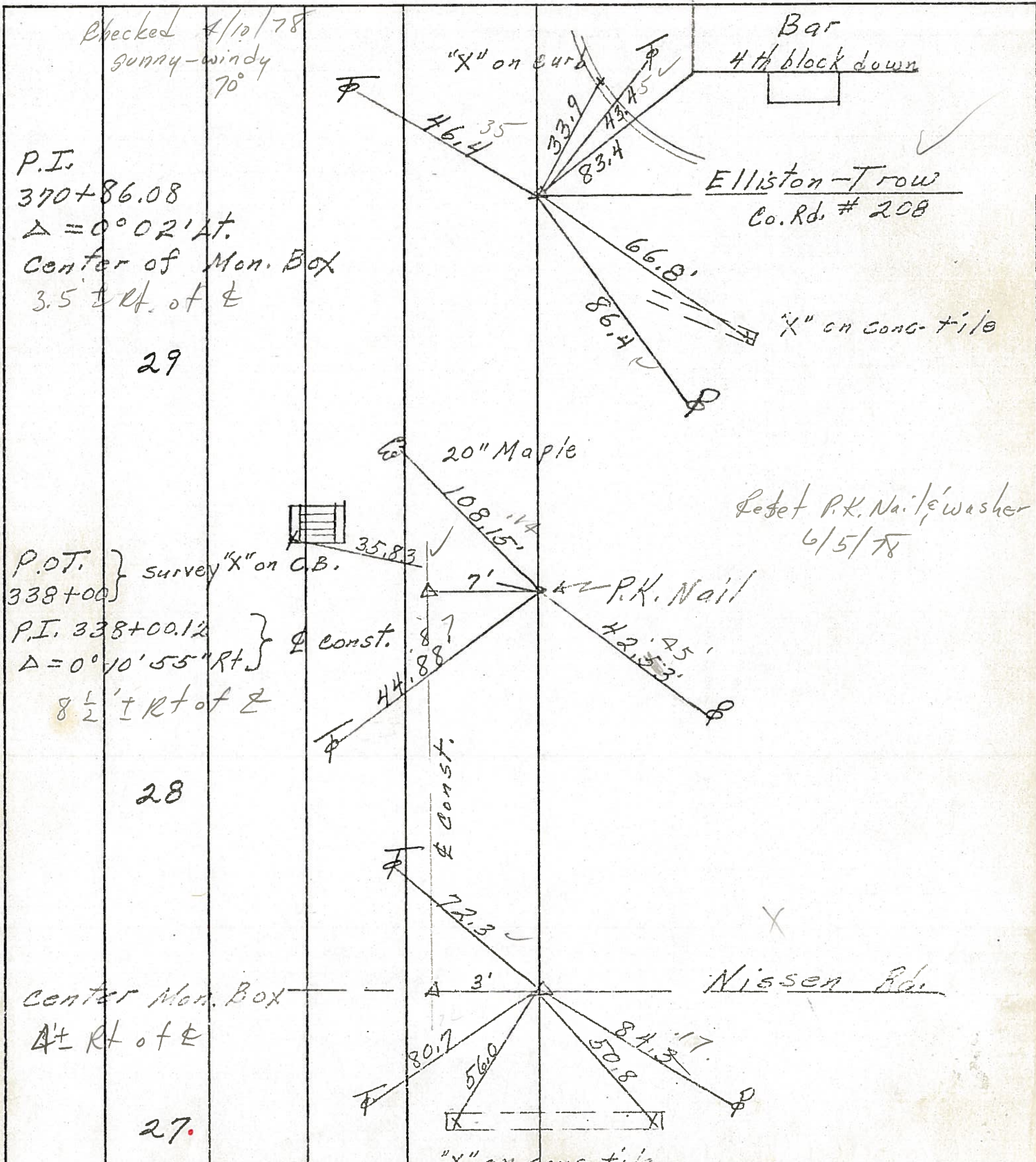
PERSONNEL TITLE PERSONNEL TITLE

COUNTY Ottawa DATE 9-18-71

S. R. 579 WEATHER Fair

SEC. 6 E 31 TEMP. 60°

DESCRIPTION Benton Twp. JOB NO.



PERSONNEL TITLE PERSONNEL TITLE

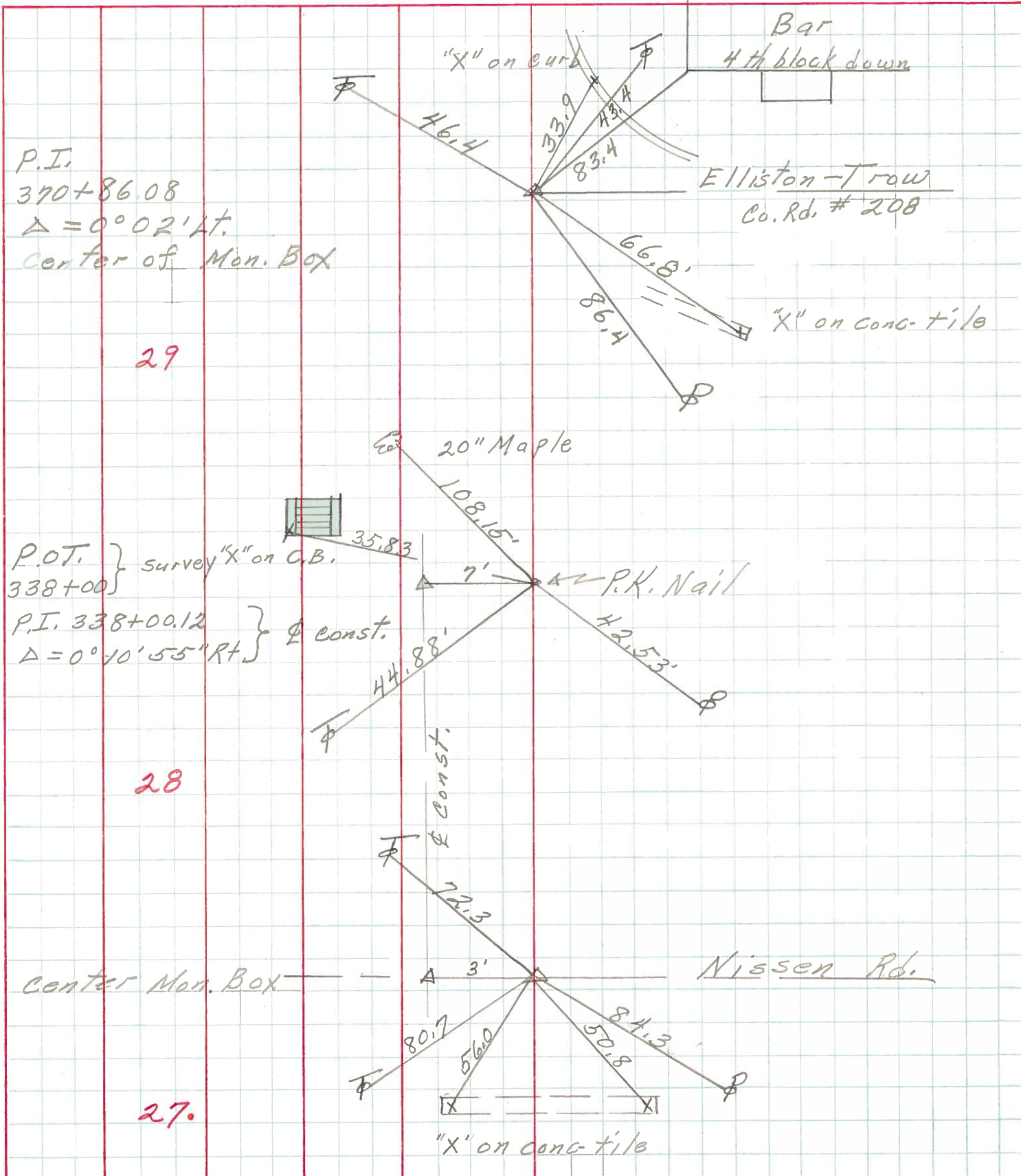
COUNTY Ottawa DATE 9-18-71

S. R. 579 WEATHER Fair

SEC. 6 & 31 TEMP. 60°

DESCRIPTION Benton Twp. JOB NO.

LEFT CENTER LINE RIGHT



P.I.
 370+86.08
 $\Delta = 0^{\circ} 02' \text{ Lt.}$
 Center of Man. Box

29

P.O.T. } survey "X" on C.B.
 338+00 }
 P.I. 338+00.12 } ϕ const.
 $\Delta = 0^{\circ} 10' 55" \text{ Rt.}$ }

28

Center Man. Box

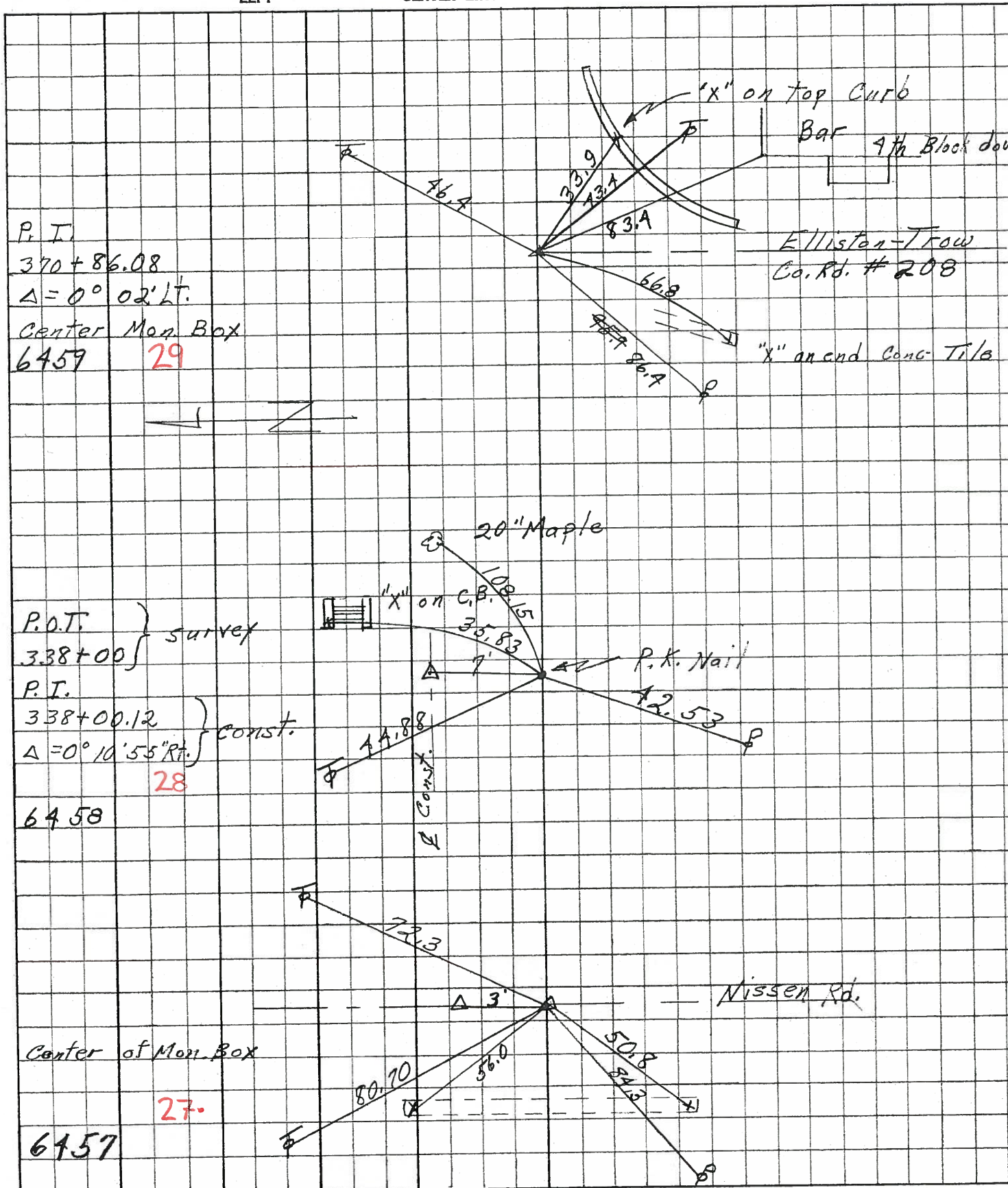
Nissen Rd.

27.

"X" on conc-tile

PERSONNEL	TITLE	PERSONNEL	TITLE	COUNTY	DATE	WEATHER	TEMP.
Schneider		anti		Offawa	9-18-68	Windy	70°
Masser				S. R.	579		
Barbour				SEC.	2.33		
Pedding							

DESCRIPTION Ties for Control Points JOB NO. _____



P. I.
 370+86.08
 $\Delta = 0^\circ 02' LT.$
 Center Man Box
 6459 29

P.O.T. } survey
 338+00 }
 P.I. }
 338+00.12 } const.
 $\Delta = 0^\circ 10' 55'' RT.$ }
 6458 28

Center of Man. Box
 6457 27.