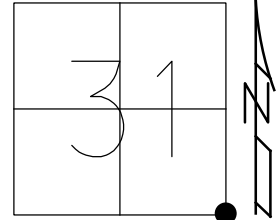


O.D.O.T. DISTRICT 2 SURVEY OFFICE (USE ONLY)

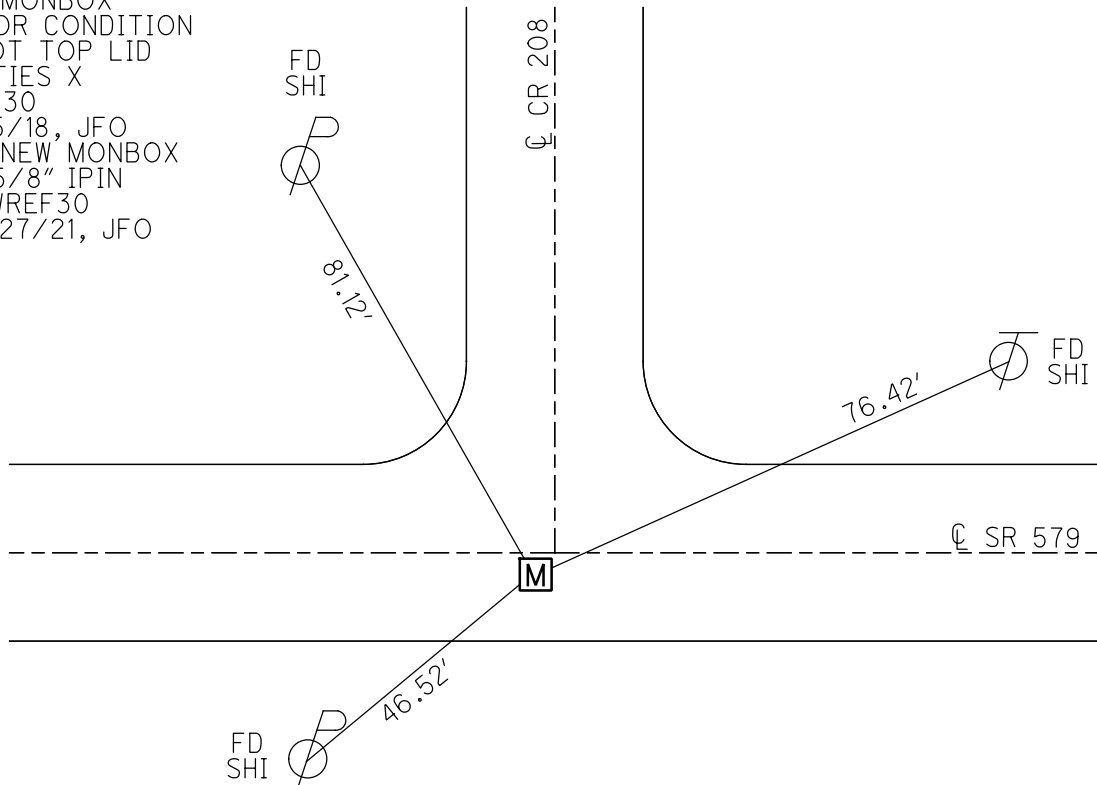
PERSONNEL \_\_\_\_\_ REFERENCE NO. 30 SHEET 33 OF 36  
 NOTES RHOADES DATE 10/7/20 ROUTE SR 579  
 H.C. AUBLE WEATHER WINDY COUNTY OTTAWA  
 R.C. O'DONNELL TEMP. 62° TOWNSHIP BENTON  
 DWG BY RHOADES PID 95759 SECTION 31  
 T 8 N R 14 E

TYPE MONUMENT MONBOX W/1" IPIN  
 ON SURFACE - ~~BELOW~~ ON  
 OFFSET  $\odot$  PAVEMENT 3.3' ~~LT~~ : RT  
8.1' TO RT EDGE PAVEMENT  
 STATION: 373+39.62



HORZ. DATUM: NAD83 2011 GEOID: NAVD88 2012A  
 GRID: NORTHING: 706692.494 EASTING: 1755352.733

RECORD: P.I.  
 STA. 373+68.65  
 $\Delta = 00^\circ 12' \text{ LT}$   
 FD MONBOX  
 W/1" IPIN  
 8/27/02, MB  
 FD MONBOX  
 POOR CONDITION  
 SHOT TOP LID  
 W/TIES X  
 REF30  
 11/5/18, JFO  
 FD NEW MONBOX  
 W/5/8" IPIN  
 NEWREF30  
 10/27/21, JFO



# O.D.O.T. DISTRICT 2 SURVEY OFFICE

PERSONNEL

REFERENCE NO. 30

SHEET 31 OF 34

NOTES BARNHISEL

H.C. CANTERBURY

R.C. BARNHISEL

DATE 8-27-02

WEATHER SUN

TEMP. +72°

ROUTE S.R. 579

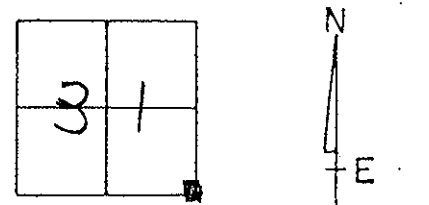
COUNTY OTTAWA

TOWNSHIP BENTON

SECTION 31

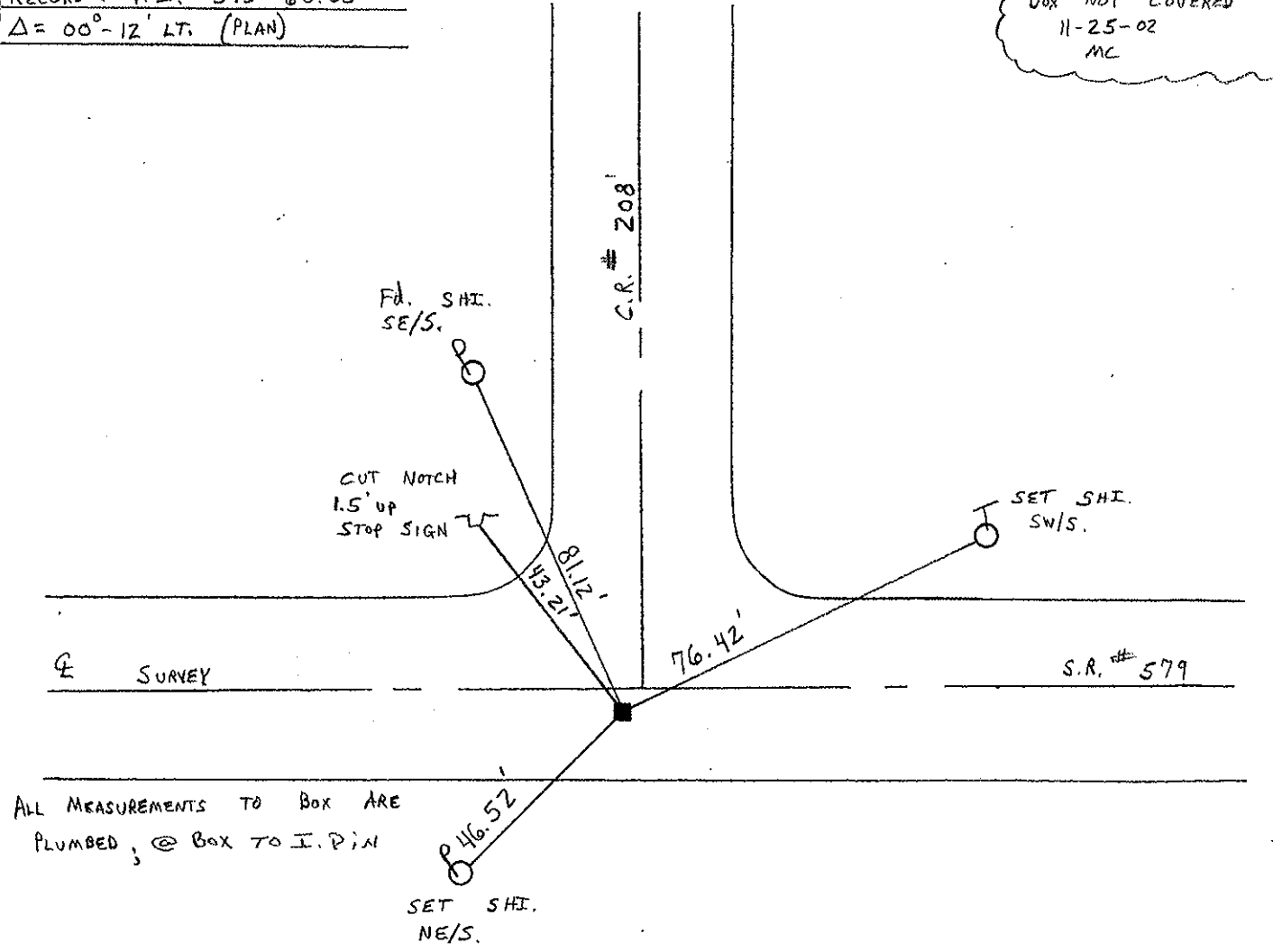
T 8 N R 14 E

TYPE MONUMENT 1" I. ROD IN MON BOX  
 ON SURFACE - ~~BELOW~~ SURFACE  
~~LEFT- & PAV'T.~~ - RIGHT 3.3' RT &  
8.1' TO RT EDGE PAVEMENT / 3' WEST OF & PAINT NORTH  
 S.L.M. 373+64



RECORD : P.I. 373+68.65  
 $\Delta = 00^\circ - 12' \text{ LT. (PLAN)}$

Box NOT COVERED  
11-25-02  
MC



OD.O.T. DISTRICT 2 SURVEY OFFICE

Sht. 14 of

STATE ROUTE #579

County Ottawa

Township Benton

Section

T8N, R14E

Personnel Cronin Schneider

Ripple Mosser

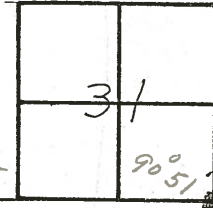
Geyman Barbour

30

Date 7/10/78

Weather sunny-windy

Temp. 73°



T8N, R14E  
T7N, R14E

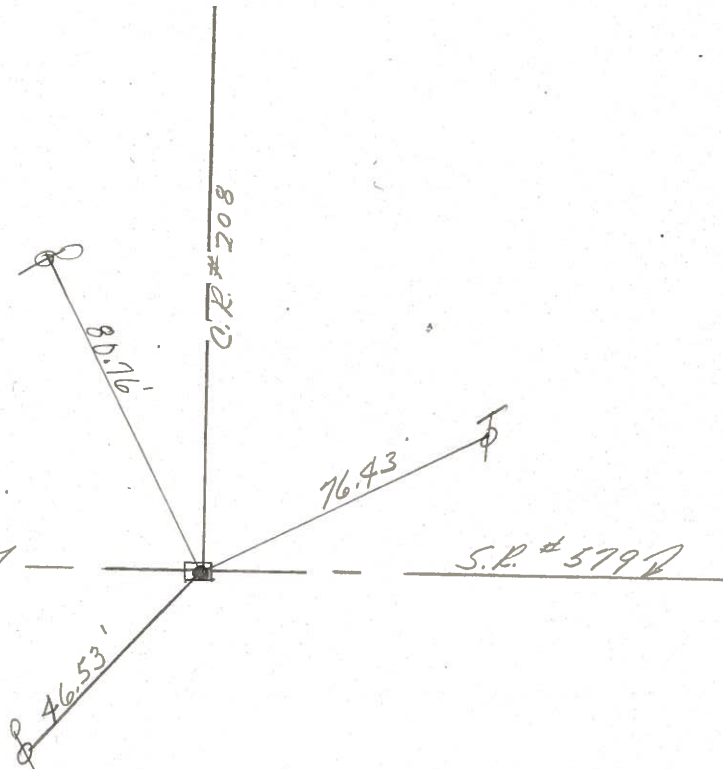
$\Delta = 00^\circ 12' \text{ Lt. (plan)}$

P.I.

373+68.65

Fd. 1" I. Rod  $5\frac{1}{4}$ " down  
in Mon. Box 3' Rt. of  $\Delta$   
of Pavement. X ties  
in Pavement also.

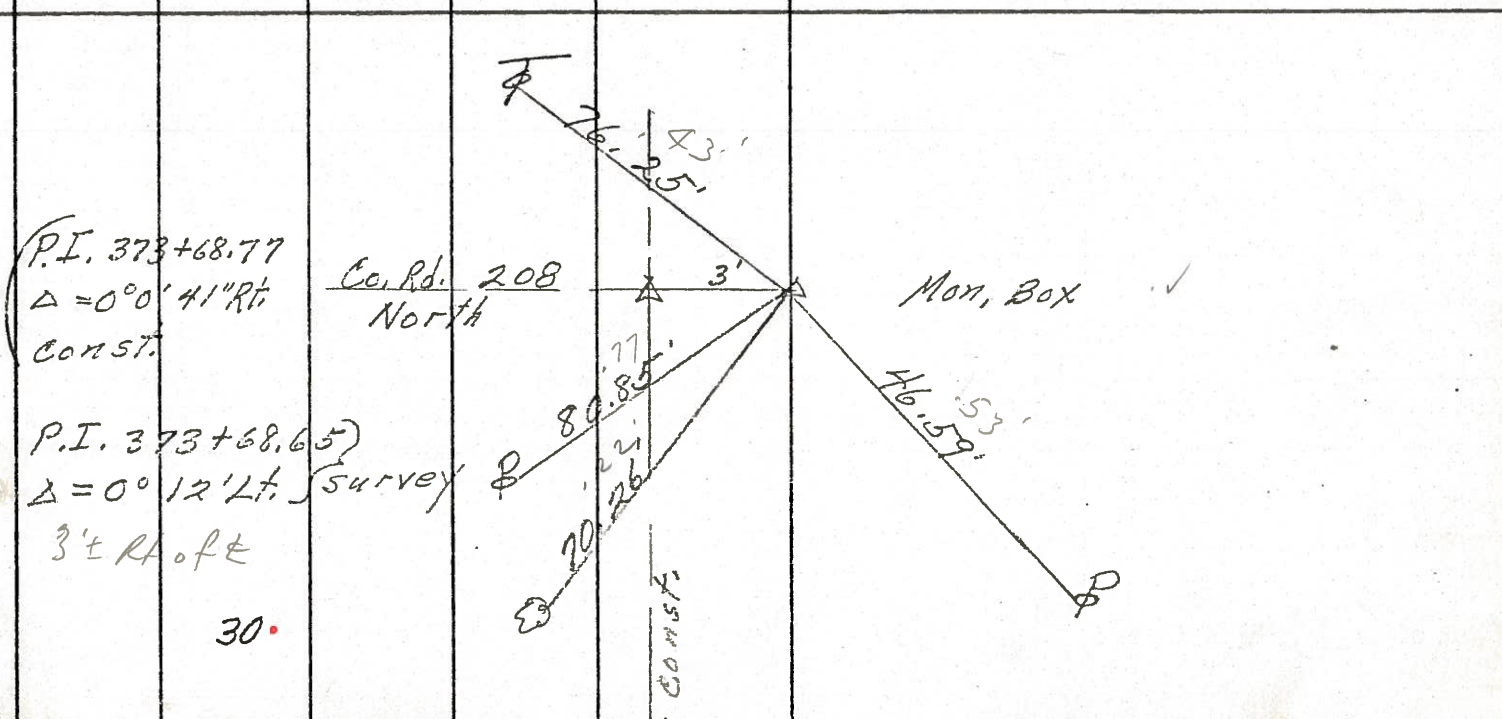
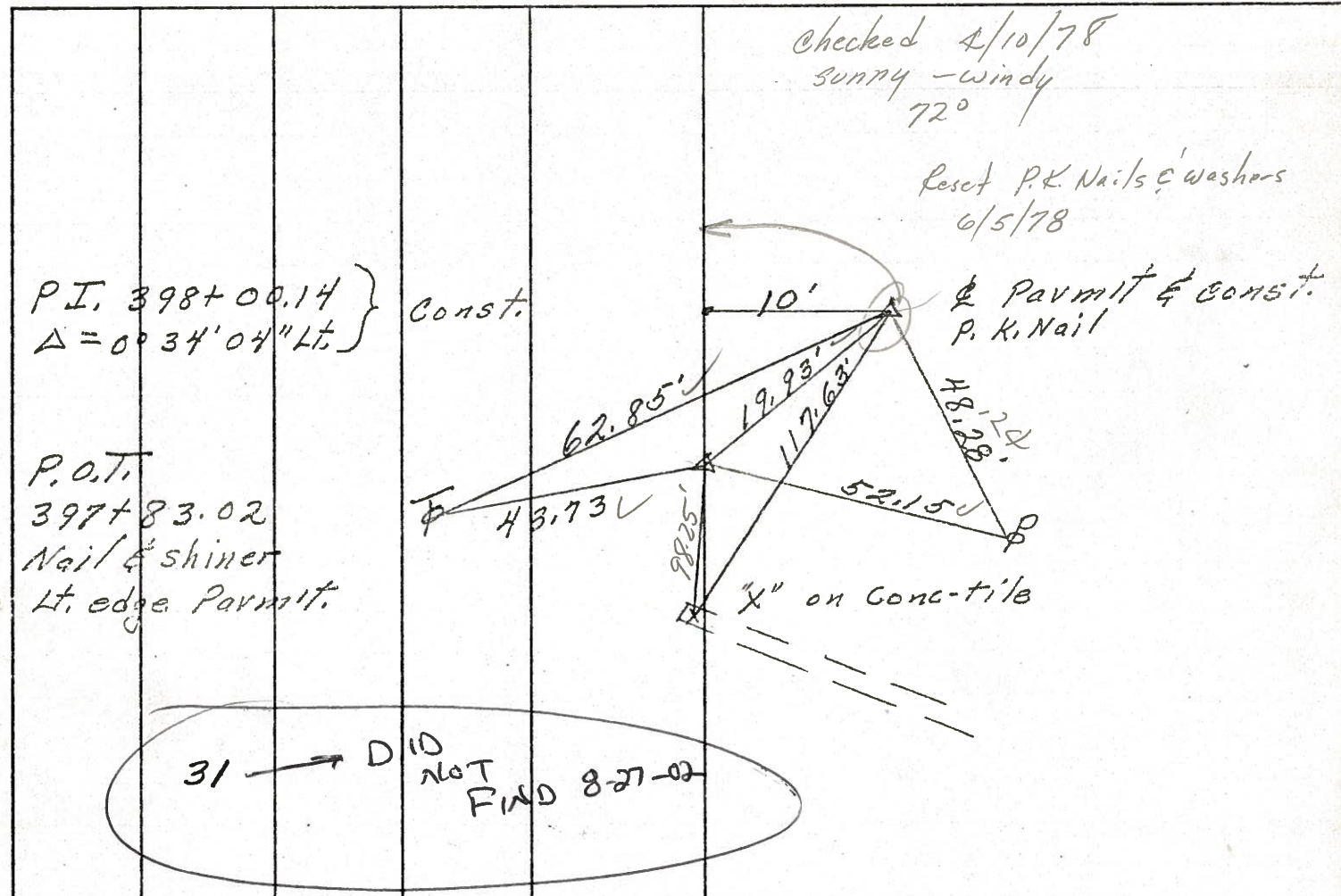
$\Delta$  Survey



PERSONNEL	TITLE	PERSONNEL	TITLE

COUNTY Ottawa DATE 9-19-71  
 S. R. 579 WEATHER Fair  
 SEC. 5 E 32 TEMP. 60°

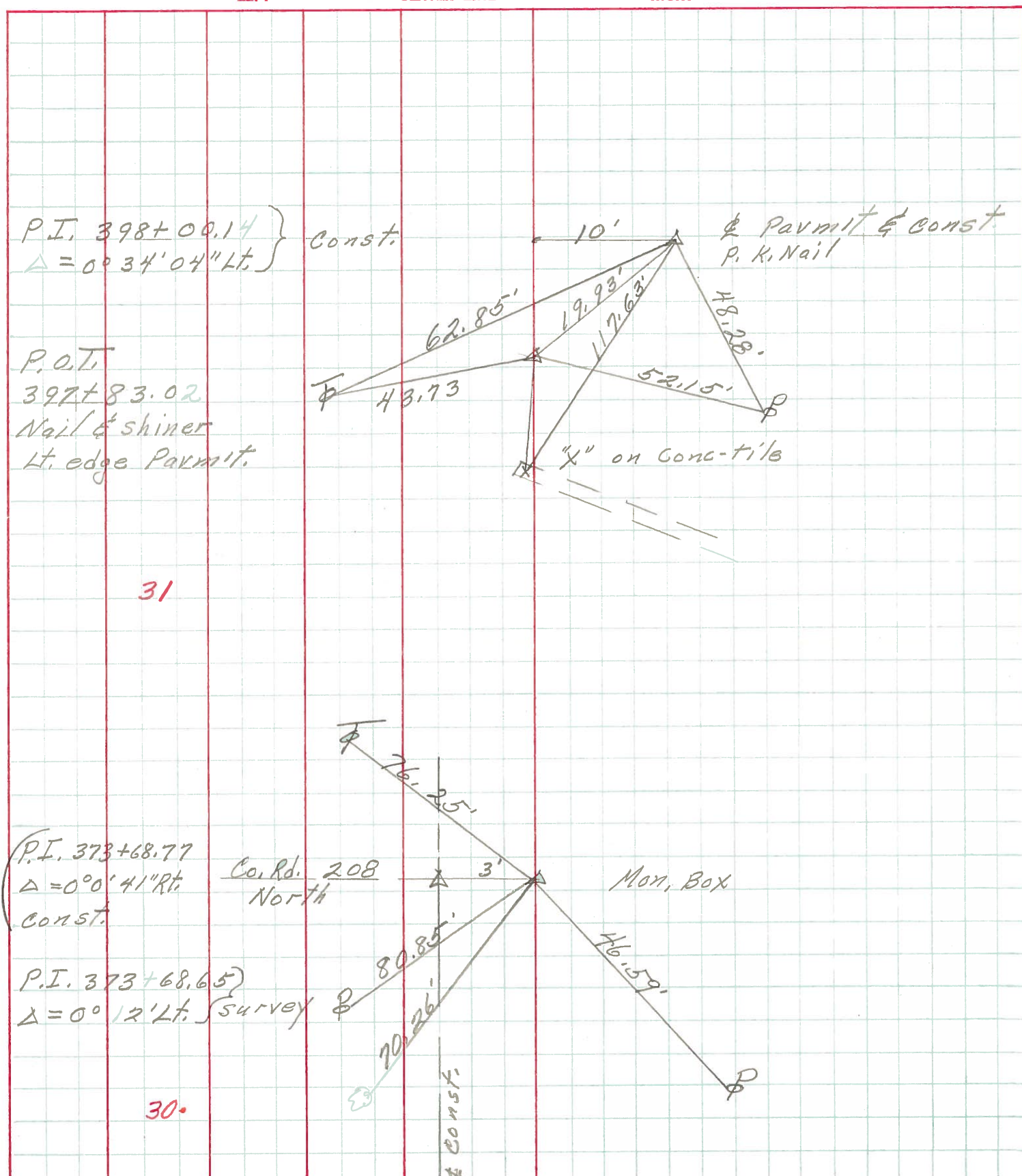
DESCRIPTION Benton Twp. JOB NO. \_\_\_\_\_  
 LEFT CENTER LINE RIGHT



PERSONNEL	TITLE	PERSONNEL	TITLE

COUNTY Ottawa DATE 9-19-71  
 S. R. 579 WEATHER Fair  
 SEC. 5 E 32 TEMP. 60°

DESCRIPTION Benton Twp. JOB NO. \_\_\_\_\_

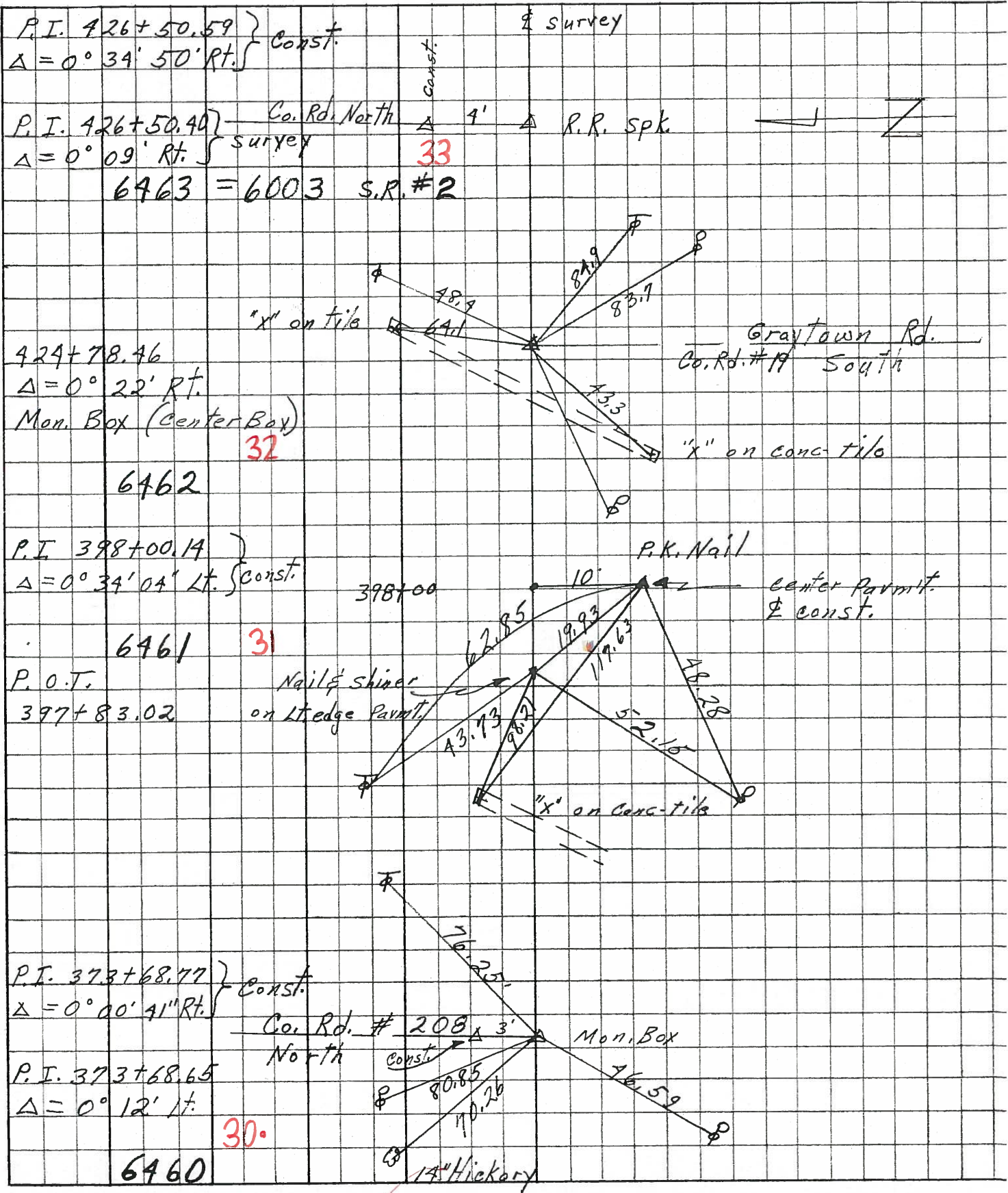


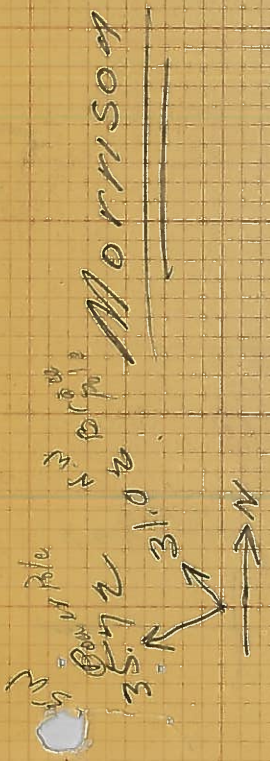
31

30.

PERSONNEL	TITLE	PERSONNEL	TITLE	COUNTY	<u>Ottawa</u>	DATE	<u>9-19-68</u>
<u>Schneider</u>				S. R.	<u>579</u>	WEATHER	<u>Fair</u>
<u>Mosser</u>				SEC.	<u>Wood Co. Line - East</u>	TEMP.	<u>60°</u>
<u>Barbour</u>							
<u>Potts</u>							

DESCRIPTION Ties for Control Points JOB NO. \_\_\_\_\_





Found RR spike in pavement West of  
Ott. Co. Rd. #208

School Dist #9 Benton Twp (Blackberry  
Corner)



4.59 ch.  
66  
2757  
2754  
302.94

5776  
2776  
10017  
19592  
2796  
47532

2796  
2607  
183