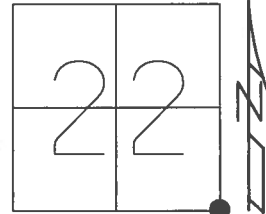


O.D.O.T. DISTRICT 2 SURVEY OFFICE (USE ONLY)

PERSONNEL _____ REFERENCE NO. 1 SHEET 1 OF 30
 NOTES RHOADES DATE 7/20/17 ROUTE SR 590
 H.C. O'DONNELL WEATHER SUNNY COUNTY OTTAWA
 R.C. POORE TEMP. 82° TOWNSHIP HARRIS
 _____ SECTION 22
 _____ T 6 N R 14 E

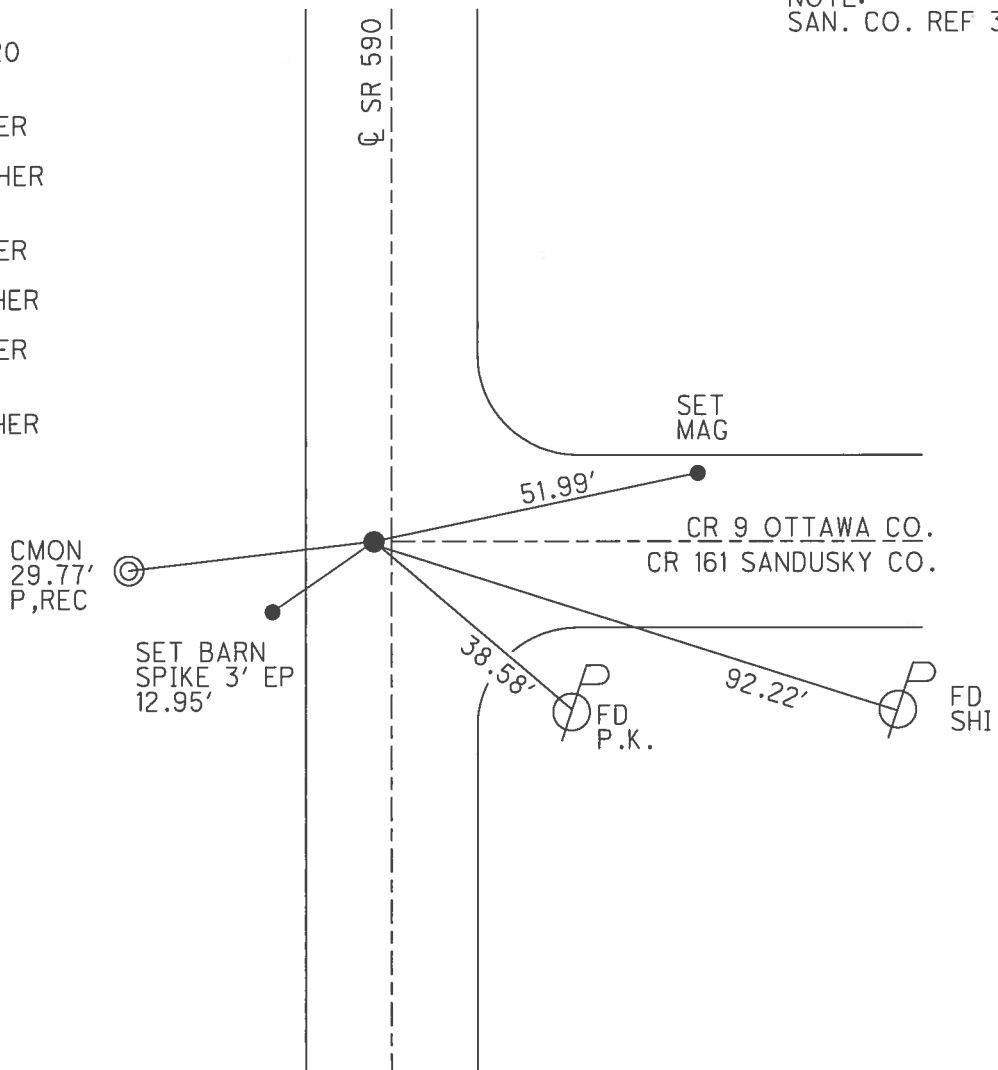
TYPE MONUMENT MAG/WASHER
 ON SURFACE - ~~BELOW~~ ON _____
 LEFT - ☉ PAV'T - ~~RIGHT~~ 2'
7.8' TO LT EDGE PAVEMENT
 S.L.M. 0+00



GRID: NORTHING: 653518.803 EASTING: 1770887.062

RECORD: P.I.
 1927 PLAN
 STA. 130+69.20
 FD STONE
 1973/1983
 FD P.K./WASHER
 7/5/01, BVD
 SET P.K./WASHER
 STA. 773+46
 9/4/01, BVD
 FD P.K./WASHER
 1/24/06, RGN
 SET MAG/WASHER
 5/28/09, SAH
 FD P.K./WASHER
 REF30
 3/28/16, JFO
 SET MAG/WASHER
 7/20/17, JFO
 UNCOVERED
 11/8/17, JFO

NOTE:
 SAN. CO. REF 30

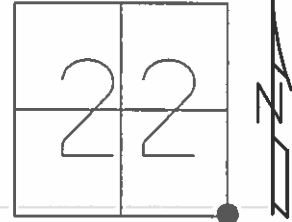


O.D.O.T. DISTRICT 2 SURVEY OFFICE (USE ONLY)

PERSONNEL _____ REFERENCE NO. 1 SHEET 1 OF 30

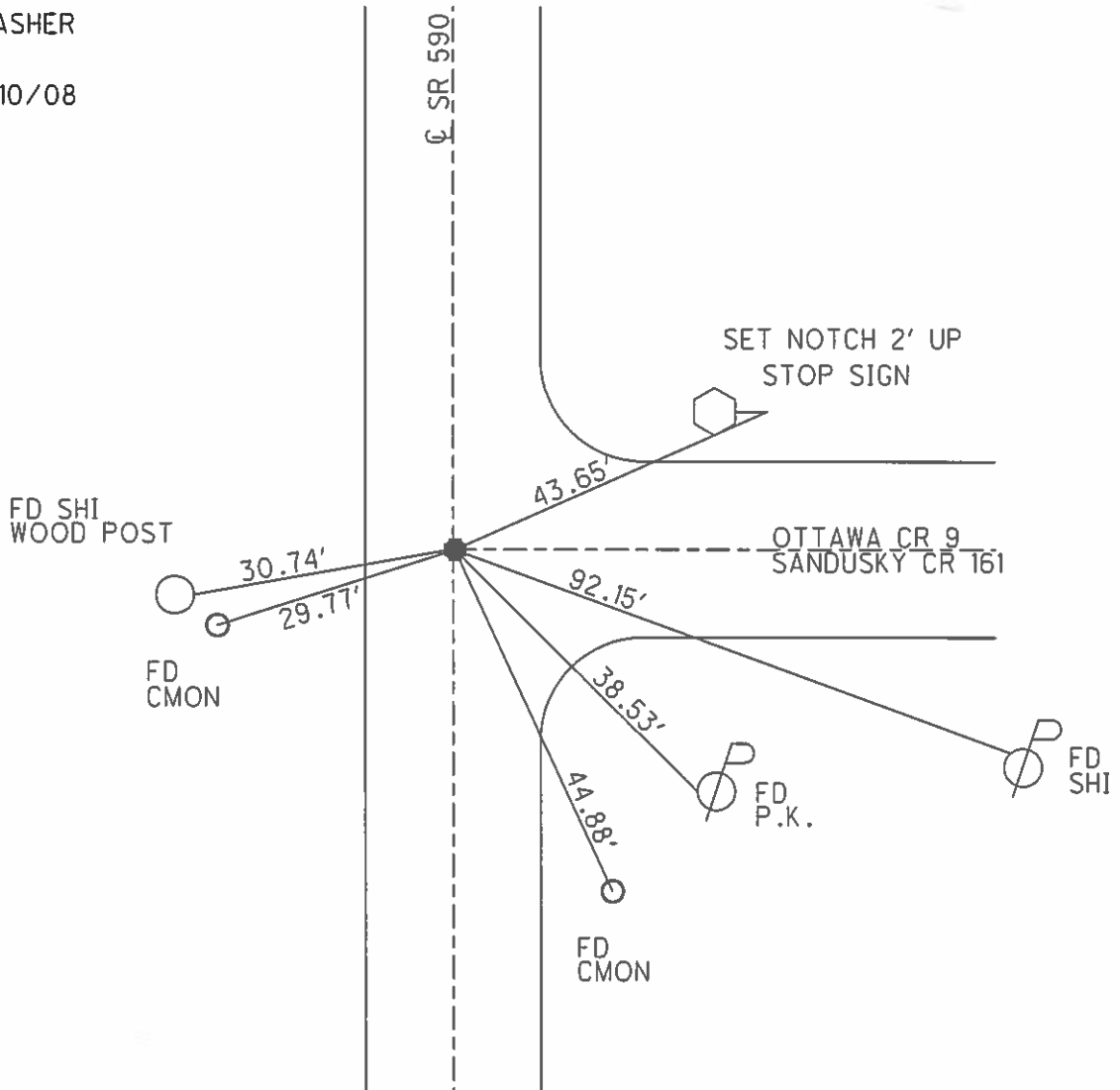
NOTES	<u>HUSS</u>	DATE	<u>1/24/06</u>	ROUTE	<u>SR 590</u>
H.C.	<u>NUHFER</u>	WEATHER	<u>CLDY/WINDY</u>	COUNTY	<u>OTTAWA</u>
R.C.	<u>RYAN</u>	TEMP.	<u>28°</u>	TOWNSHIP	<u>HARRIS</u>
	<u>MATT</u>			SECTION	<u>22</u>
					<u>T 6 N R 14 E</u>

TYPE MONUMENT _____ P.K./WASHER _____
 ON SURFACE - ~~BELOW~~ _____ ON _____
 LEFT - ☉ PAV'T - ~~RIGHT~~ _____ 2.0'
8.4' TOLT _____ EDGE PAVEMENT
 S.L.M. _____ 0+00



GRID: NORTHING: 627243.303 EASTING: 1720926.911

RECORD:
 SET MAG/WASHER
 5/28/09
 GPS SV101,
 7/01/08, 7/10/08



O.D.O.T. DISTRICT 2 SURVEY OFFICE

PERSONNEL

REFERENCE NO. 30

SHEET 14 OF 14

NOTES VAN DUSEN

H.C. Rousos

R.C. Brown

DATE 9-5-01

WEATHER SUNNY

TEMP. +75°F

ROUTE 590

COUNTY SANDUSKY

TOWNSHIP WASHINGTON

SECTION 27-26

T. 5 N. R. 14 E.

TYPE MONUMENT P.K. & WASHER

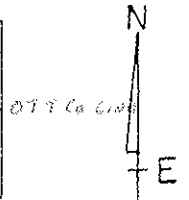
ON SURFACE - BELOW SURFACE

LEFT - CL PAV'T. - RIGHT 1 1/2' LT

7.8' TO LT EDGE PAVEMENT

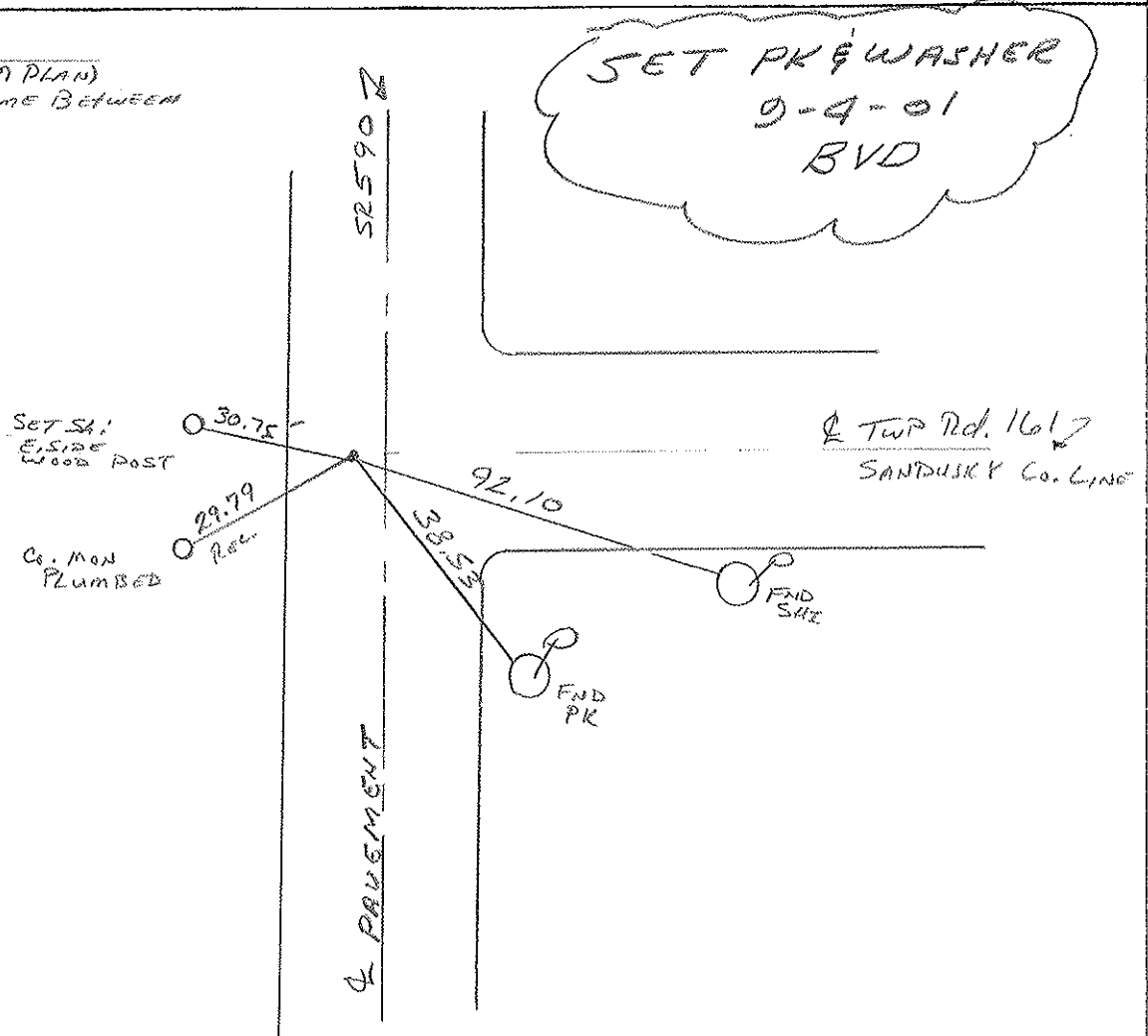
S.L.M. 773+46

22	23
27	26



NOTE:

130+69.26 (1929 PLAN)
FND. STONE SOMETIME BETWEEN
1903 & 1983



O.D.O.T. DISTRICT 2 SURVEY OFFICE

PERSONNEL

REFERENCE NO. 1

SHEET 1 OF 12

NOTES Cheney

H.C. BARBOUR

R.C. RIPPLE

DATE 11/14/91

WEATHER Sunny

TEMP. 45°

ROUTE SR.#590

COUNTY OTTAWA

TOWNSHIP HARRIS

SECTION 22 & 23

T 6 N R 14 E

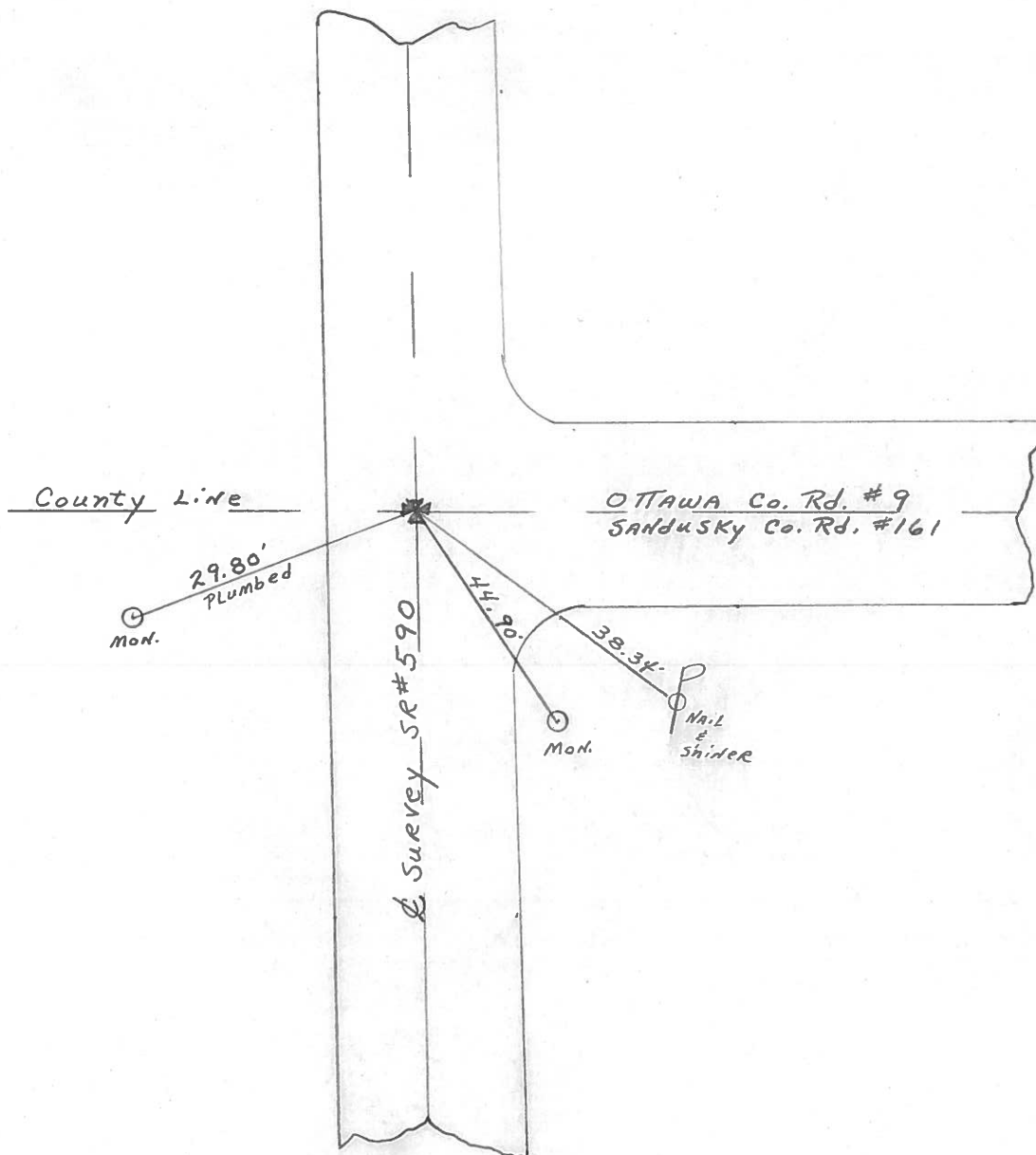
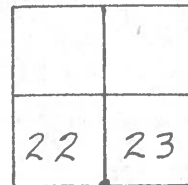
TYPE MONUMENT Set P.K. Nail & Washer

ON SURFACE - BELOW CORNER STONE

LEFT- & PAV'T. - ~~RIGHT~~ 2.0'

8.0' TO L.T. EDGE PAVEMENT

S.L.M. 0+00



Get Odometer Reading From Known Roads or approx distance between Points.

SHEET NO. 1

PERSONNEL TITLE PERSONNEL TITLE

Schneider Vinson
Mosser
Barbour
Geyman

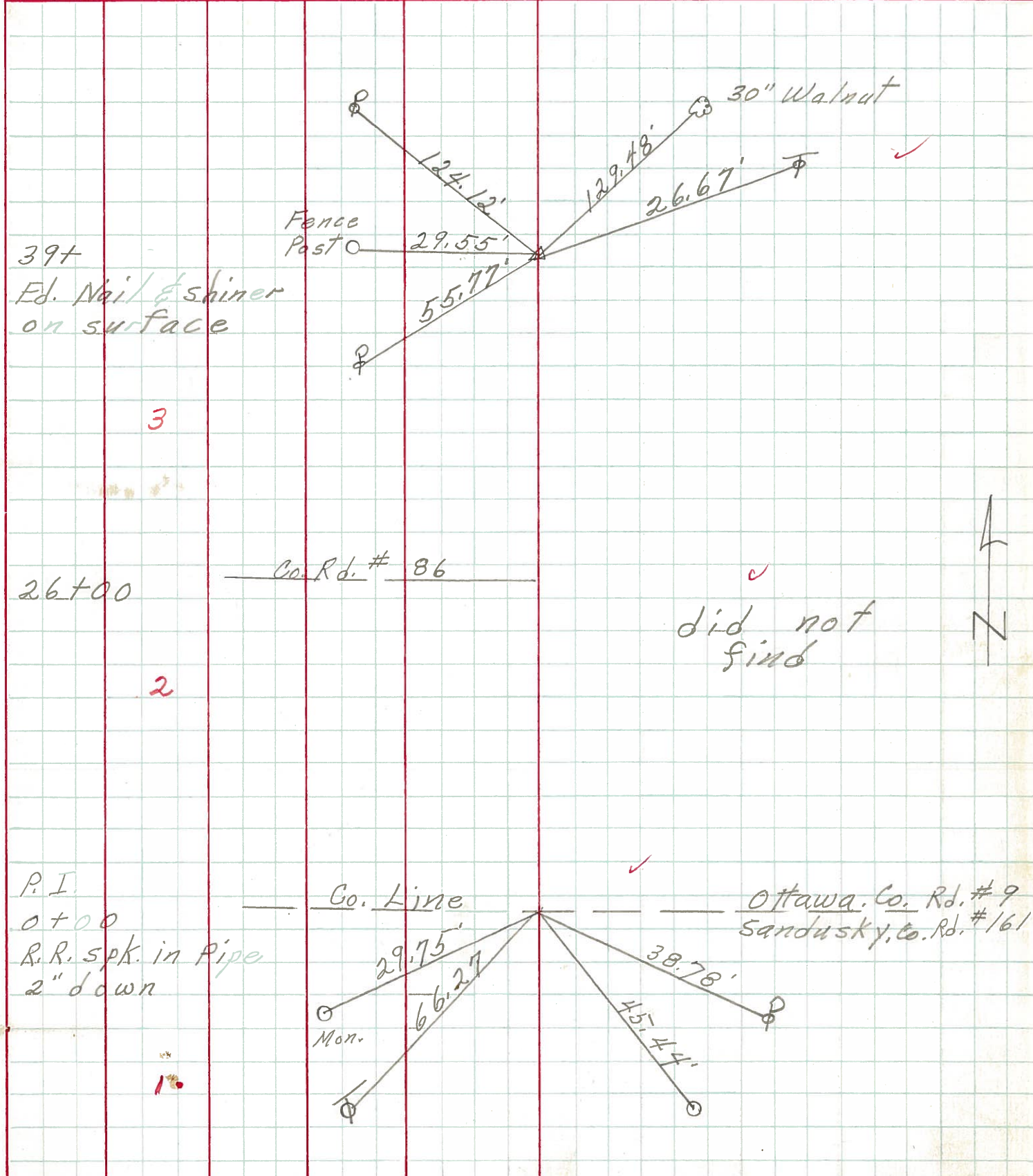
COUNTY Ottawa DATE 7-26-71

S. R. 590 WEATHER Cloudy

SEC. 22 & 23 TEMP. 72°

DESCRIPTION Sandusky Co. Line North Harris Twp JOB NO. _____

LEFT CENTER LINE RIGHT



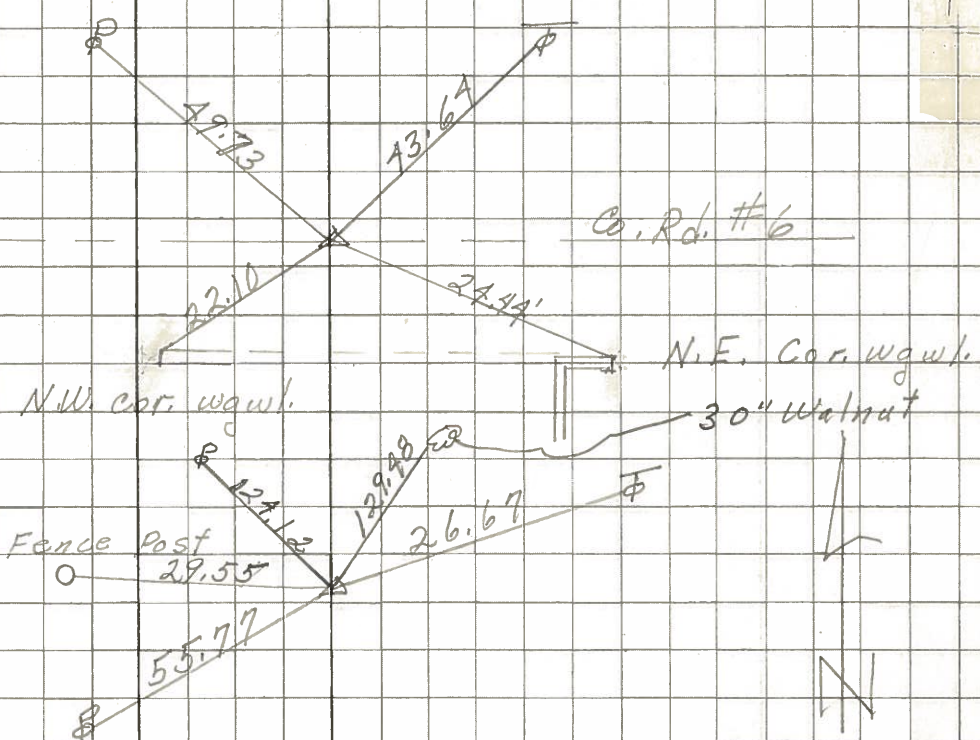
PERSONNEL	TITLE	PERSONNEL	TITLE	COUNTY	DATE	WEATHER	TEMP.
Schneider		Potts		Ottawa	4-3-68	Cloudy	55°
Mosser				S. R. 590			
Barbour				SEC. San. Co. Line North			
Redding							

DESCRIPTION Ties for Control Points JOB NO. _____

Reset P.K. Nails
6-17-68

P.I. 52+
R.R. spk.

6473



39+
Fd. Nail & Shier
Su fa. o

6472

26+
1/2 mile North
of Co. Line

6471

Co. Rd. # 86 did not find

P.I. 0+00
RR. spk. in pipe
2" down

6470

