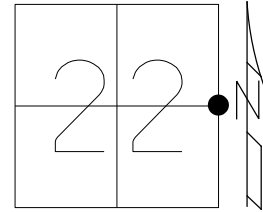


O.D.O.T. DISTRICT 2 SURVEY OFFICE (USE ONLY)

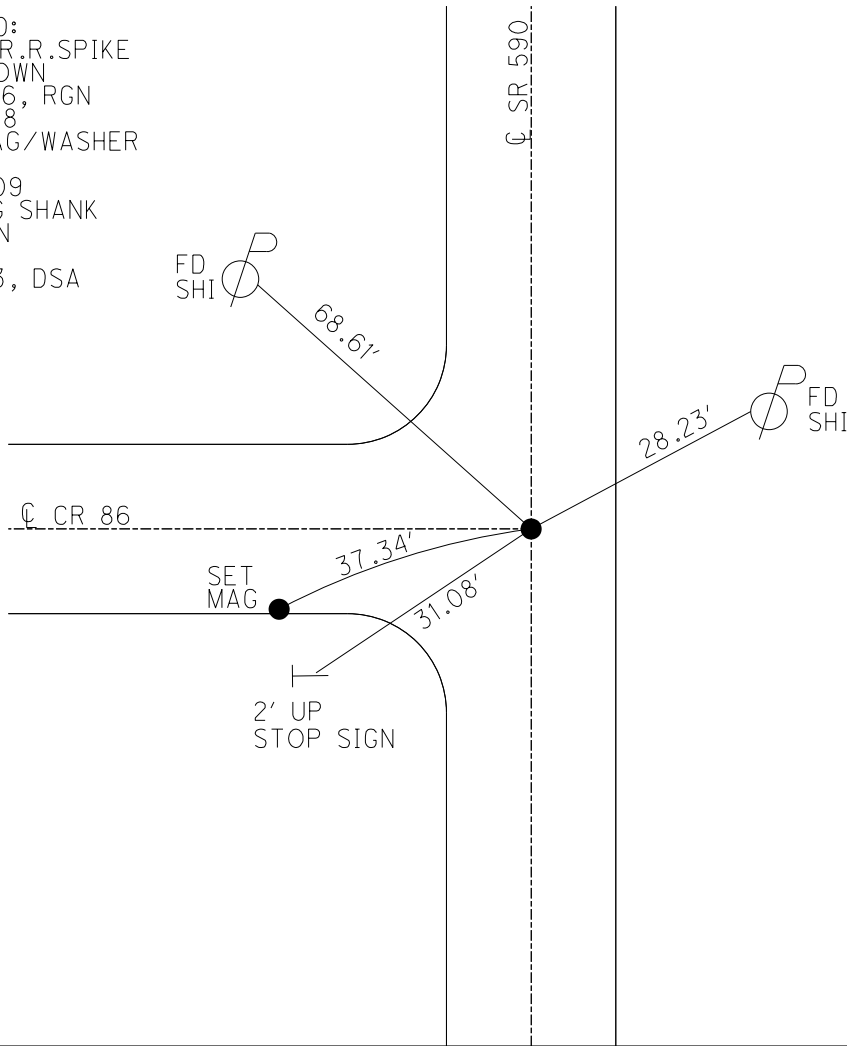
PERSONNEL _____ REFERENCE NO. 2 SHEET 2 OF 30
 NOTES RHOADES DATE 8/4/23 ROUTE SR 590
 H.C. AUBLE WEATHER SUNNY COUNTY OTTAWA
 R.C. ASTON TEMP. 84° TOWNSHIP HARRIS
 SECTION 22
 DWG BY RHOADES PID PAVETRAIN T 6 N R 14 E

TYPE MONUMENT MAG SHANK
~~ON SURFACE~~ - BELOW 1"
 OFFSET $\text{\textcircled{C}}$ PAVEMENT 3.4' LT : ~~RT~~
13.9' TO RT EDGE PAVEMENT
 STATION: 26+43.3



HORIZ.DATUM: NAD83 2011 GEOID: NAVD88 2018
 GRID: NORTHING: 656158.723 EASTING: 1770876.845

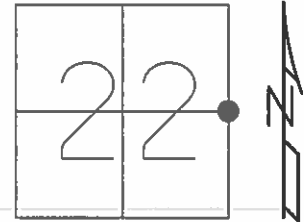
RECORD:
 FD LG R.R.SPIKE
 0.2' DOWN
 1/24/06, RGN
 7/10/08
 SET MAG/WASHER
 SV102
 5/28/09
 FD MAG SHANK
 1" DOWN
 REF2
 8/4/23, DSA



O.D.O.T. DISTRICT 2 SURVEY OFFICE (USE ONLY)

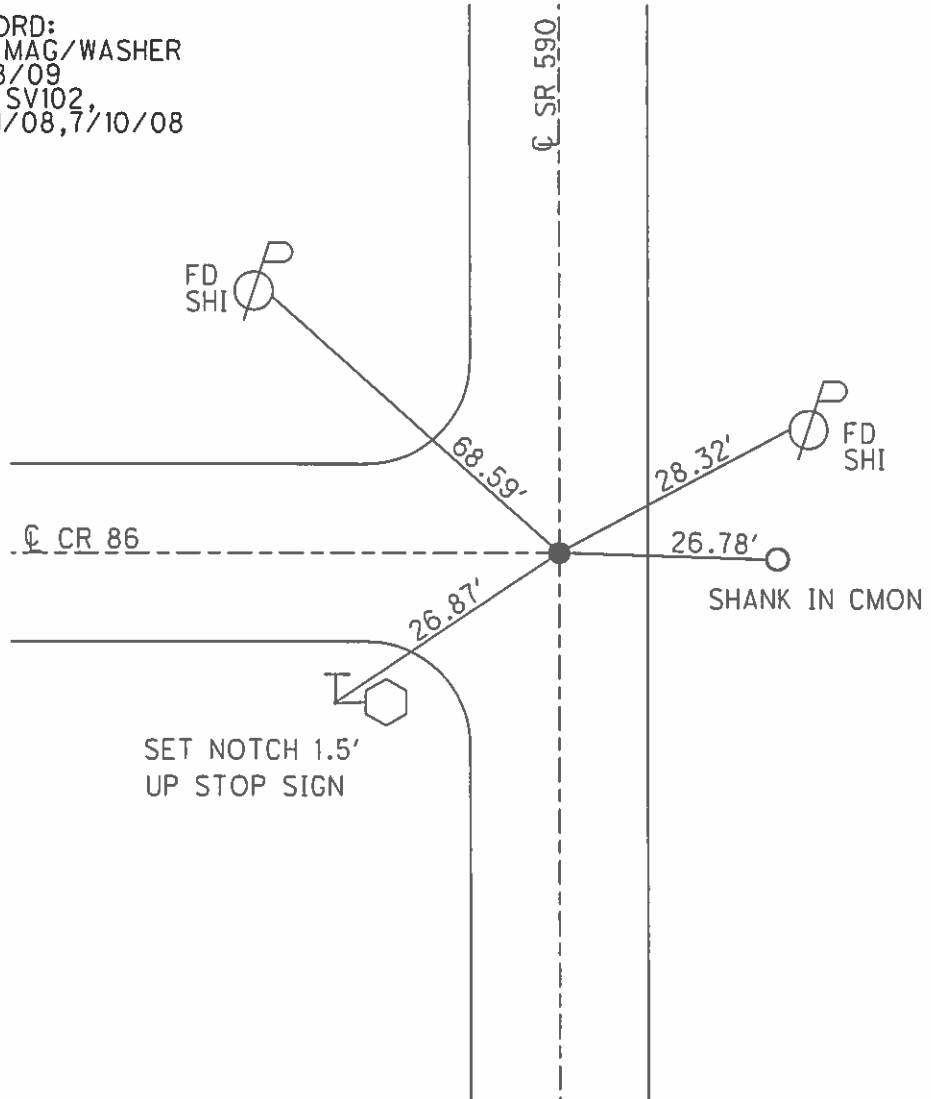
PERSONNEL _____ REFERENCE NO. 2 SHEET 2 OF 30
 NOTES HUSS DATE 1/24/06 ROUTE SR 590
 H.C. MATT H WEATHER CLDY/WINDY COUNTY OTTAWA
 R.C. RYAN H TEMP. 29° TOWNSHIP HARRIS
NUHFER SECTION 22
 T 6 N R 14 E

TYPE MONUMENT LG RR SPIKE
~~ON SURFACE~~ - BELOW 0.2'
 LEFT - ☉ PAV'T - ~~RIGHT~~ 3.4'
13.9' TO RT EDGE PAVEMENT
 S.L.M. 26+43.3



GRID: NORTHING: 656158.723 EASTING: 1770876.845

RECORD:
 SET MAG/WASHER
 5/28/09
 GPS SV102,
 7/01/08, 7/10/08



O.D.O.T. DISTRICT 2 SURVEY OFFICE (Use Only)

PERSONNEL

REFERENCE NO. 2

SHEET 2 OF 12

NOTES HUSS

DATE 01-24-06

ROUTE S.R. 590

H.C. MATT H

WEATHER CLDY./WINDY

COUNTY OTTAWA

R.C. RYAN H

TEMP. +29 F.

TOWNSHIP HARRIS

FL.-NUHFER

SECTION 22 & 23

T 6 N R 14 E

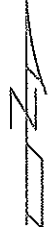
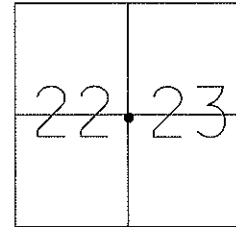
TYPE MONUMENT LG. RR. SPK.

~~ON SURFACE~~ - BELOW 0.2' BELOW

LEFT - CL PAV'T - ~~RIGHT~~ 3.4' LT

13.9' TO EAST EDGE PAVEMENT

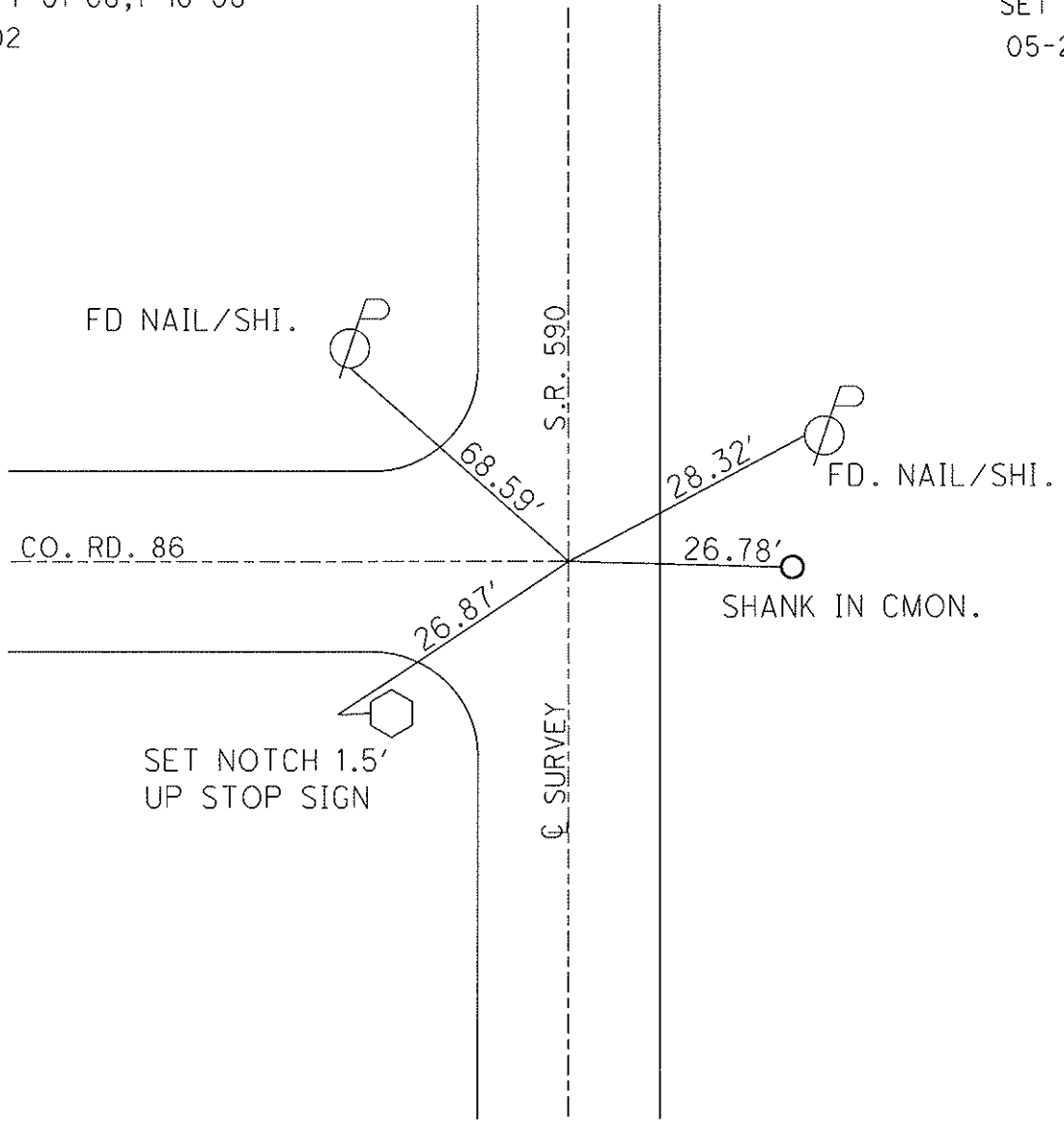
S.L.M. 26+43.3



Grid: Northing: 656158.723 Easting: 1770876.845

GPS 7-01-08,7-10-08
SV102

SET MAG/WASH.
05-28-09 SAH



O.D.O.T. DISTRICT 2 SURVEY OFFICE

PERSONNEL

REFERENCE NO. 2

SHEET 2 OF 12

NOTES Cheney

H.C. BARBOUR

R.C. RIPPLE

DATE 11/14/91

WEATHER SUNNY

TEMP. 45°

ROUTE SR#590

COUNTY OTTAWA

TOWNSHIP HARRIS

SECTION 22 & 23

T. 6 N. R. 14 E

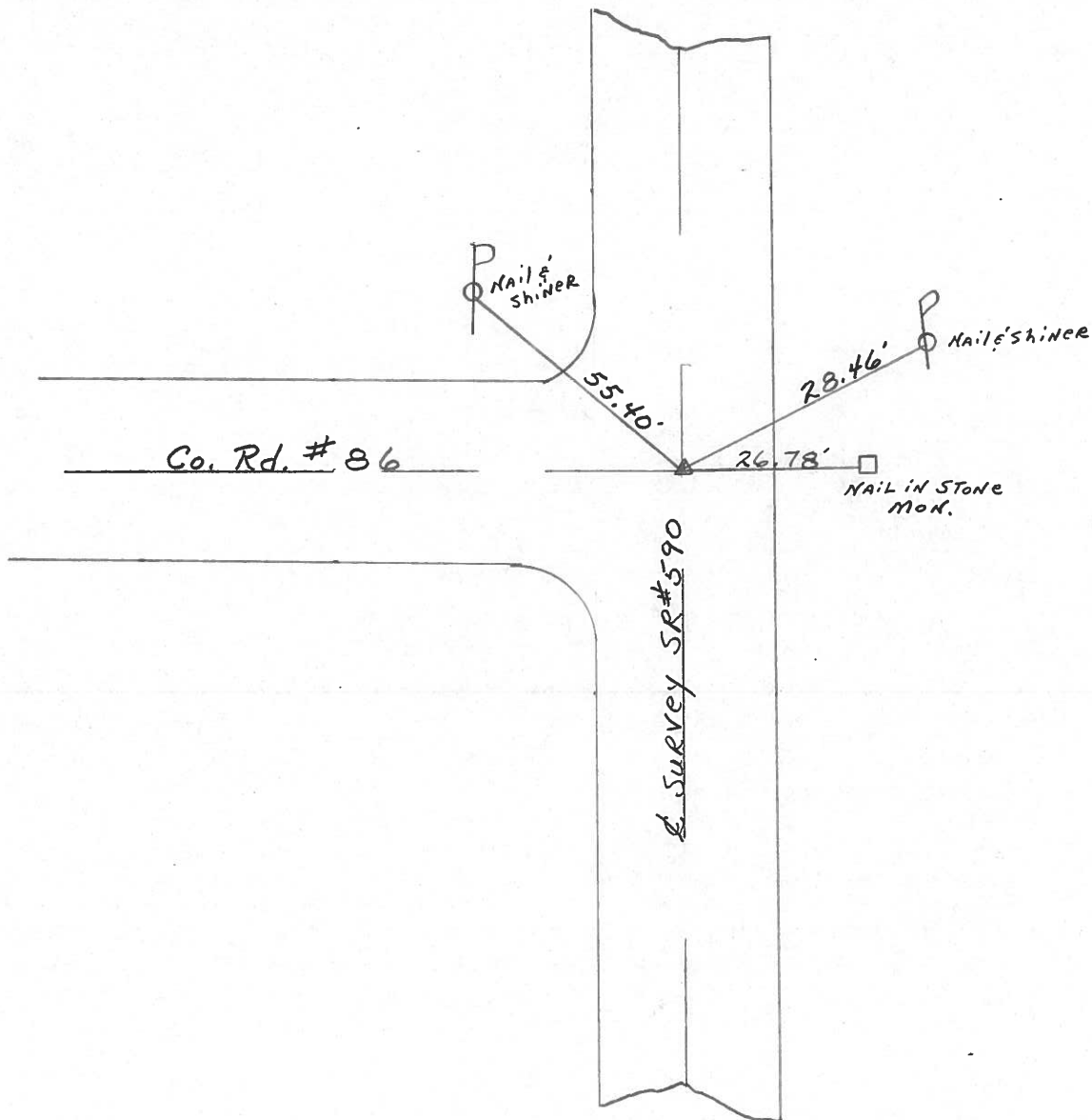
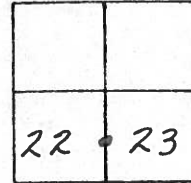
TYPE MONUMENT SET P.K. NAIL & WASHER

ON SURFACE - BELOW

LEFT- & PAV'T. - RIGHT 2.5'

13.5' TO EAST EDGE PAVEMENT

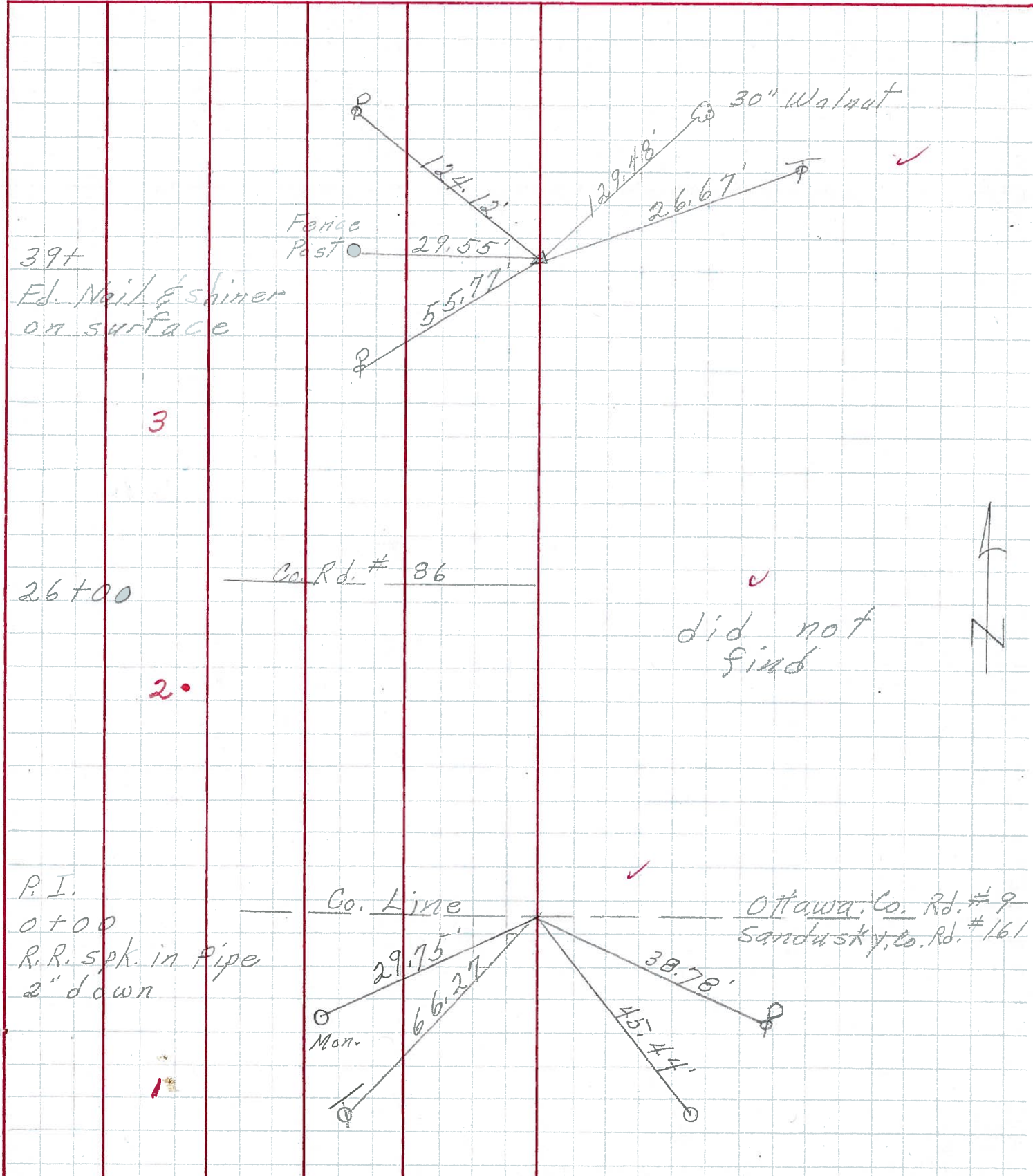
S.L.M. 26+40



Get Odometer Reading From Known Roads or aprox distance between Points.

PERSONNEL	TITLE	PERSONNEL	TITLE	COUNTY	DATE
Schneider		Vinson		Ottawa	7-26-71
Mosser				S. R. 590	WEATHER Cloudy
Barbour				SEC. 22 & 23	TEMP. 72°
Geyman					

DESCRIPTION Sandusky Co. Line North Harris Twp JOB NO. _____



PERSONNEL	TITLE	PERSONNEL	TITLE	COUNTY	DATE	WEATHER	TEMP.
Schneider		Potts		Ottawa	4-3-68	Cloudy	55°
Mosser				S. R. 590			
Barbour				SEC. San. Co. Line North			
Redding							

DESCRIPTION Ties for Control Points JOB NO. _____

