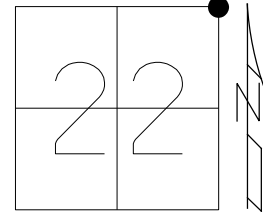


O.D.O.T. DISTRICT 2 SURVEY OFFICE (USE ONLY)

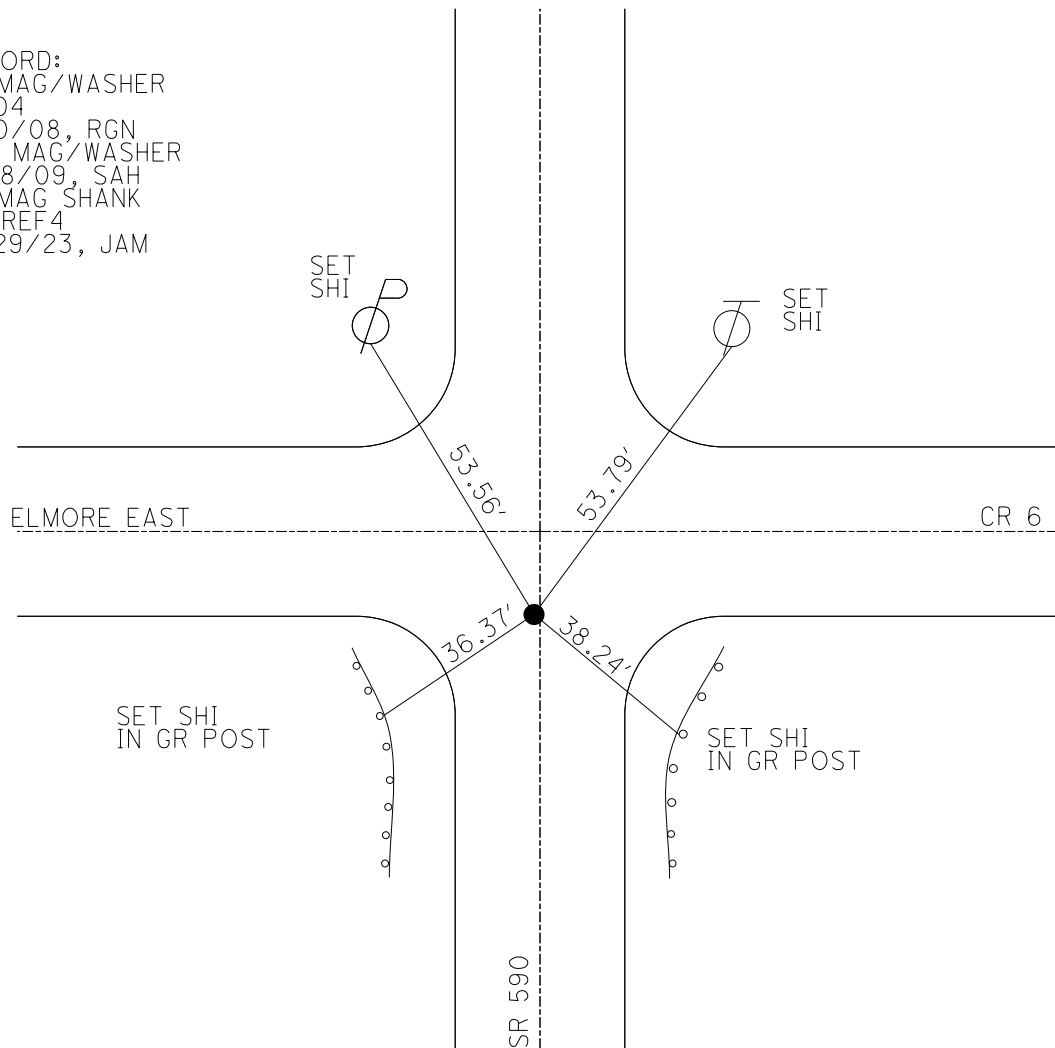
PERSONNEL \_\_\_\_\_ REFERENCE NO. 4 SHEET 4 OF 30  
 NOTES RHOADES DATE 12/29/23 ROUTE SR 590  
 H.C. MILLER WEATHER CLOUDY COUNTY OTTAWA  
 R.C. RHOADES TEMP. 40° TOWNSHIP HARRIS  
 DWG BY RHOADES PID PAVETRAIN SECTION 22  
 T 6 N R 14 E

TYPE MONUMENT MAG SHANK  
~~ON SURFACE~~ - BELOW ON  
 OFFSET Q PAVEMENT 1.6' LT : ~~RT~~  
- TO - EDGE PAVEMENT  
 STATION: 52+82



HORIZ.DATUM: NAD83 2011 GEOID: NAVD88 2018  
 GRID: NORTHING: 658796.238 EASTING: 1770866.606

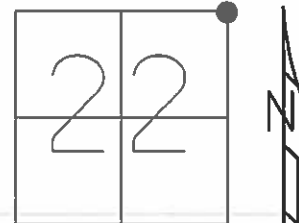
RECORD:  
 FD MAG/WASHER  
 SV104  
 7/10/08, RGN  
 SET MAG/WASHER  
 5/28/09, SAH  
 FD MAG SHANK  
 NEWREF4  
 12/29/23, JAM



**O.D.O.T. DISTRICT 2 SURVEY OFFICE (USE ONLY)**

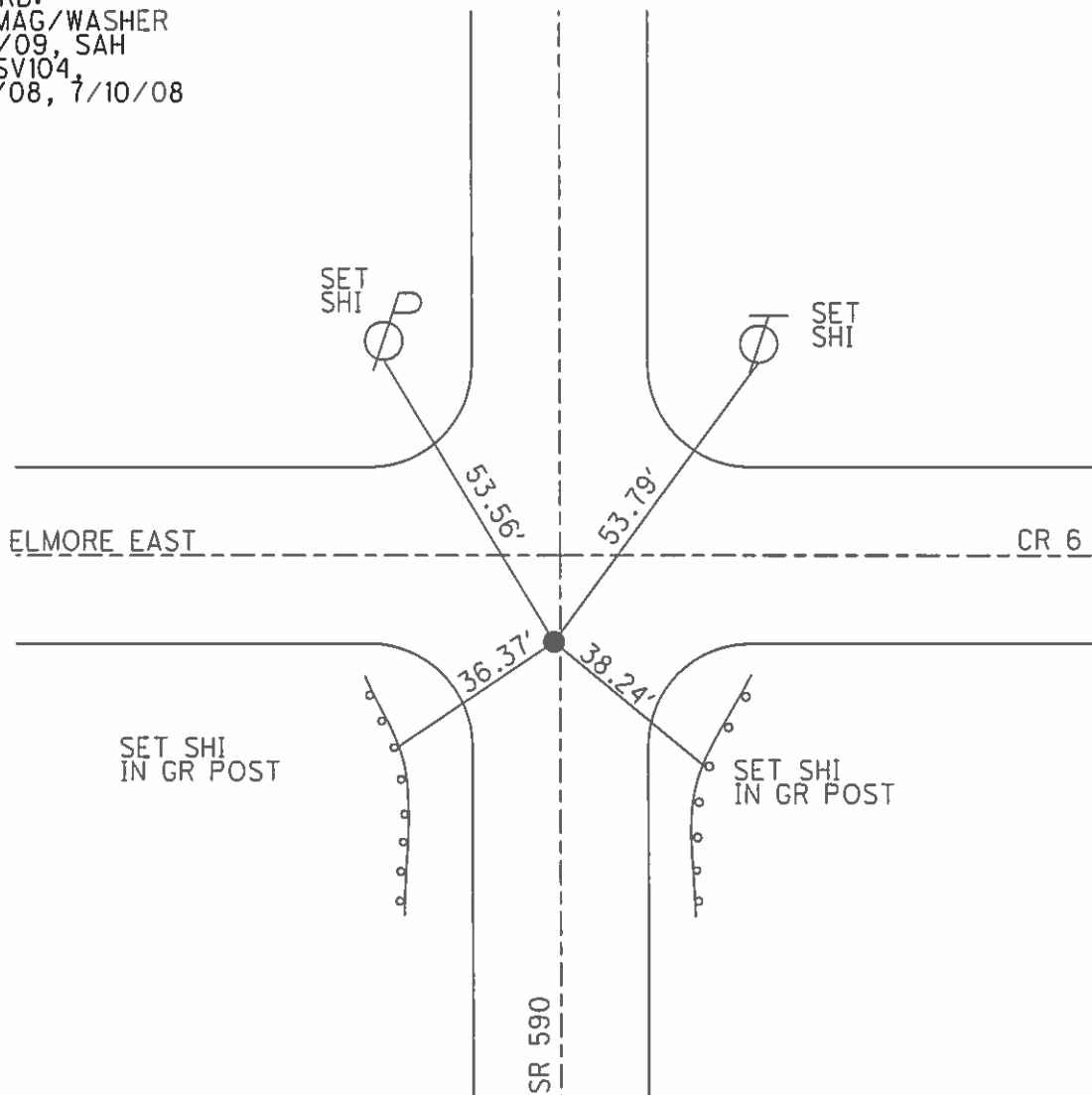
PERSONNEL \_\_\_\_\_ REFERENCE NO. 4 SHEET 4 OF 30  
 NOTES HUSS DATE 1/26/06 ROUTE SR 590  
 H.C. MATT H WEATHER CLDY/WINDY COUNTY OTTAWA  
 R.C. RYAN H TEMP. 29° TOWNSHIP HARRIS  
 \_\_\_\_\_ NUHFER \_\_\_\_\_ SECTION 22  
 \_\_\_\_\_ T 6 N R 14 E

TYPE MONUMENT \_\_\_\_\_ P.K./WASHER \_\_\_\_\_  
 ON SURFACE - ~~BELOW~~ \_\_\_\_\_ ON \_\_\_\_\_  
 LEFT - ☉ PAV'T - ~~RIGHT~~ 1.6' (12.5' S. OF ☉ CR. 6)  
 \_\_\_\_\_ TO \_\_\_\_\_ EDGE PAVEMENT  
 S.L.M. \_\_\_\_\_ 52+82 \_\_\_\_\_



GRID: NORTHING: 658796.296 EASTING: 1770866.553

RECORD:  
 SET MAG/WASHER  
 5/28/09, SAH  
 GPS SV104  
 7/01/08, 7/10/08



O.D.O.T. DISTRICT 2 SURVEY OFFICE ( Use Only )

PERSONNEL

REFERENCE NO. 4

SHEET 4 OF 12

NOTES HUSS

DATE 01-26-06

ROUTE S.R. 590

H.C. MATT H

WEATHER CLDY.-WINDY

COUNTY OTTAWA

R.C. RYAN H

TEMP. +29 F.

TOWNSHIP HARRIS

FL. NUHFER

SECTION 14, 15, 22, 23

T 6 N R 14 E

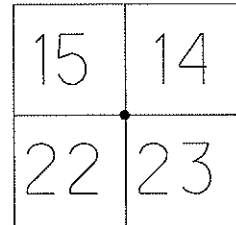
TYPE MONUMENT P.K./WASHER

ON SURFACE - ~~BELOW~~ SURF.

LEFT - Q PAV'T ~~RIGHT~~ 1.6' LT. OF Q

TO EDGE PAVEMENT 12.5' S. OF Q CR. 6

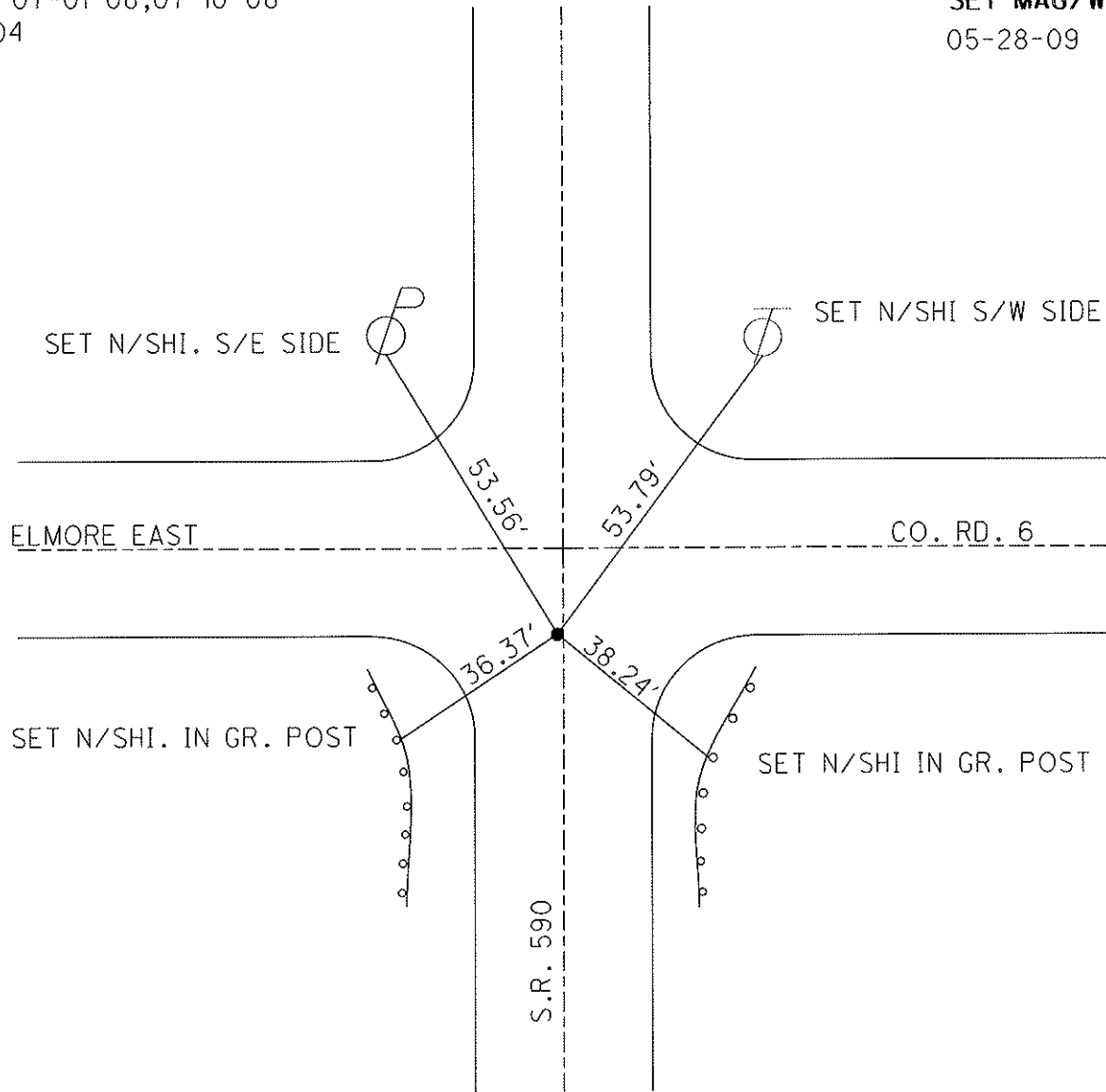
S.L.M. 52+82



Grid: Northing: 658796.296 Easting: 1770866.553

GPS 07-01-08,07-10-08  
SV104

SET MAG/WASH.  
05-28-09 SAH.



# O.D.O.T. DISTRICT 2 SURVEY OFFICE

PERSONNEL

REFERENCE NO. 4

SHEET 4 OF 12

NOTES Ripple

H.C. BARBOUR

R.C. Geyman

DATE 11/30/90

WEATHER SUNNY - Windy

TEMP. 38°

ROUTE SR#590

COUNTY OTTAWA

TOWNSHIP HARRIS

SECTION 15 & 14

T6 N R 14 E

TYPE MONUMENT Set P.K Nail & Washer

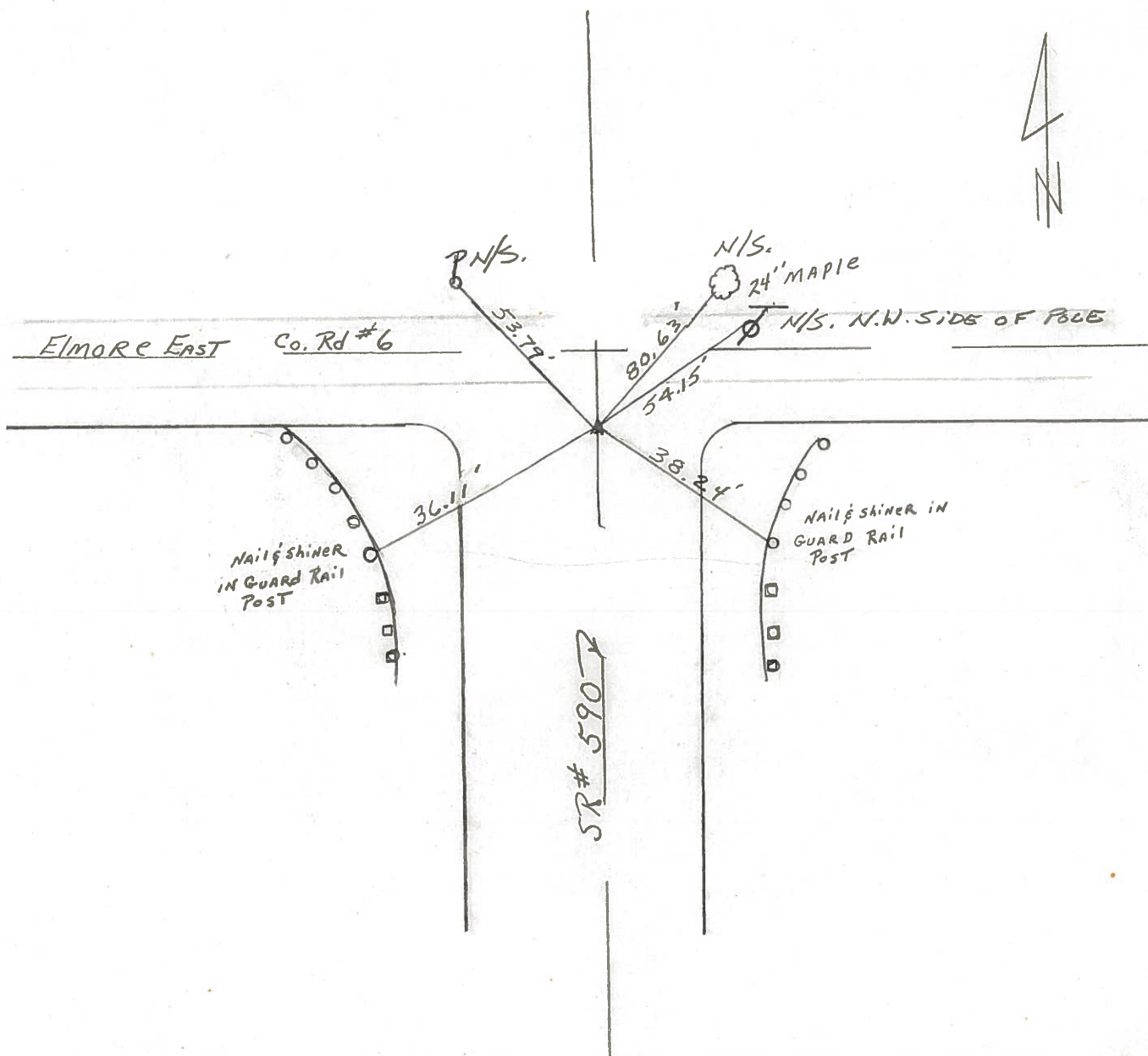
ON SURFACE - ~~BELOW~~

LEFT - PAV'T. - RIGHT 2' LT. & PAV'T

TO EDGE PAVEMENT

S.L.M. 1.0 STA. 52+70

15	14
22	23



5-2-1-10

PERSONNEL TITLE PERSONNEL TITLE

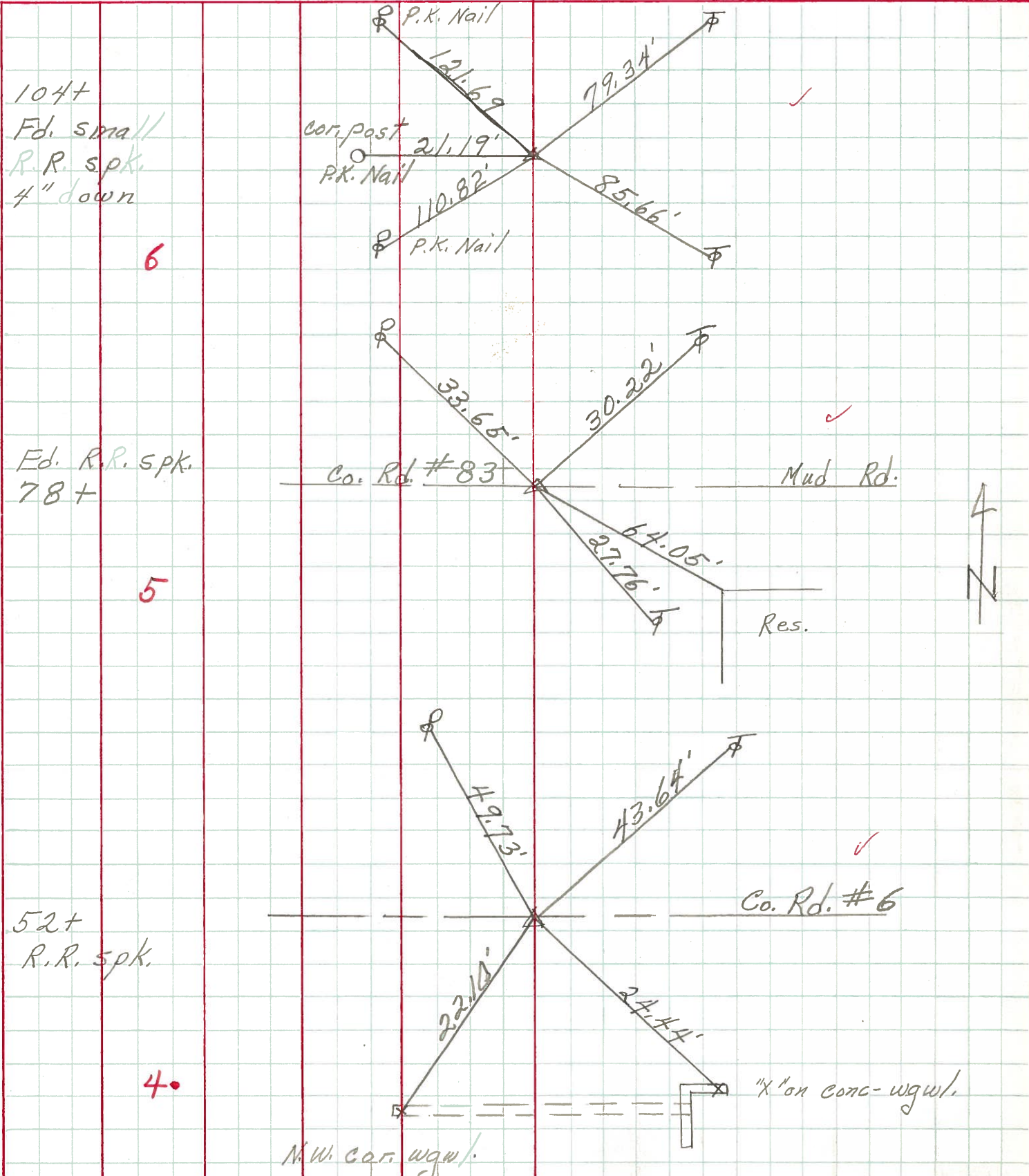
Schneider Vinson  
Mosser  
Barbour  
Geyman

COUNTY Ottawa DATE 7-26-71

S. R. 590 WEATHER Cloudy

SEC. 15 & 14 TEMP. 72°

DESCRIPTION Sandusky, C. Line North Harris Twp. JOB NO.



104+  
Ed. small  
R.R. spk.  
4" down

6

Ed. R.R. spk.  
78+

5

52+  
R.R. spk.

4

Co. Rd. #6

"X" on conc-wgw.

M.W. cor. wgw.



PERSONNEL	TITLE	PERSONNEL	TITLE	COUNTY	DATE
Schneider		Potts		Ottawa	4-3-68
Mosser				S. R.	590
Barbour				WEATHER	Cloudy
Redding				SEC.	San. Co. Line North
DESCRIPTION				TEMP.	55°
Ties for Control Points				JOB NO.	

