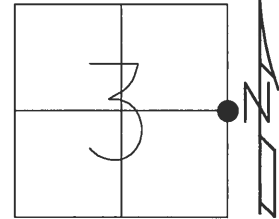


O.D.O.T. DISTRICT 2 SURVEY OFFICE (USE ONLY)

PERSONNEL	REFERENCE NO.	16 A	SHEET	15	OF	30
NOTES	HUSS	DATE	1/27/06	ROUTE	SR 590	
H.C.	NUHFER	WEATHER	CLEAR	COUNTY	OTTAWA	
R.C.	RYAN H	TEMP.	31°	TOWNSHIP	HARRIS	
				SECTION	3	
				T	6	N
				R	14	E

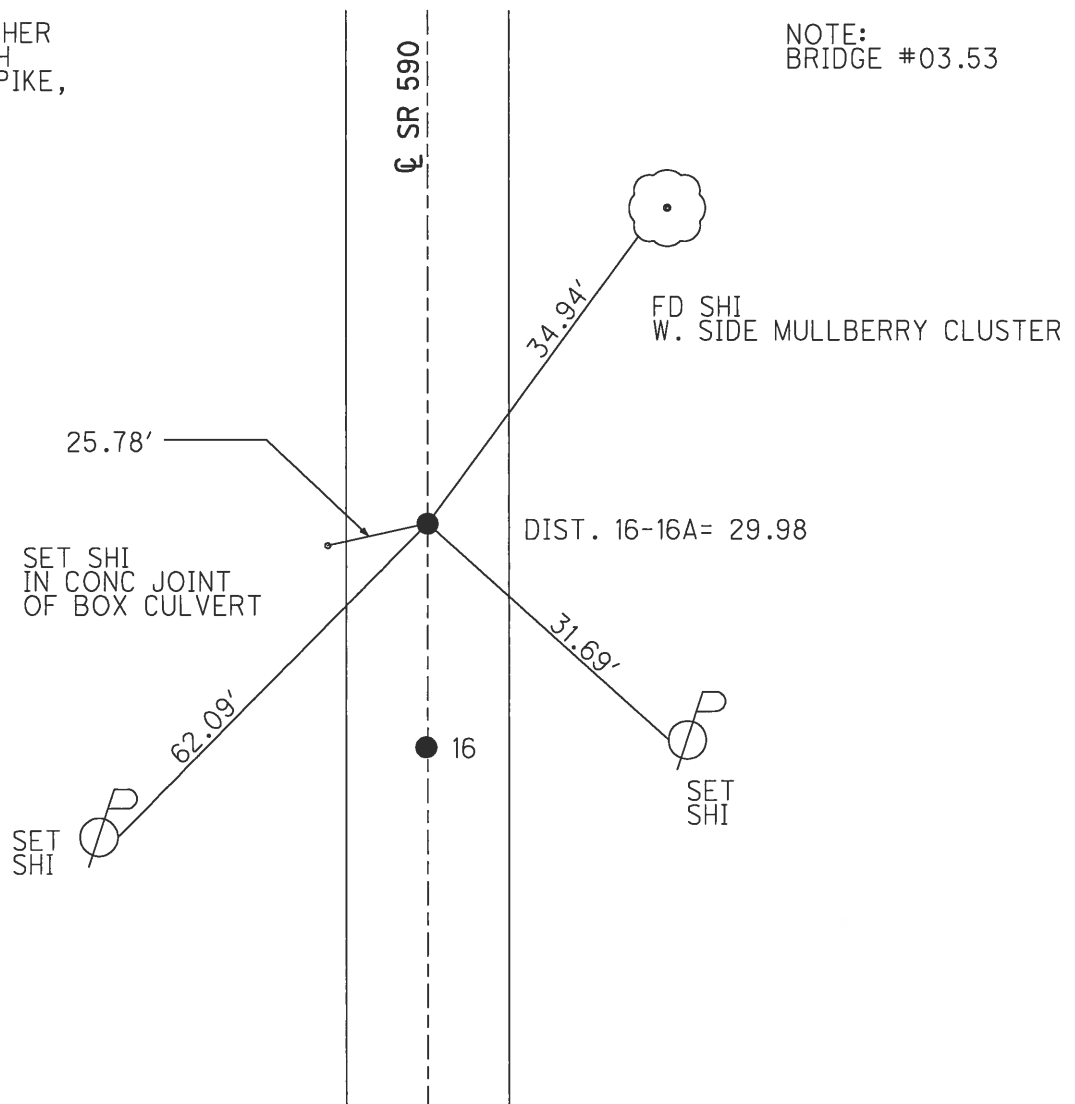
TYPE MONUMENT LG RR SPIKE
 ON SURFACE - ~~BELOW~~ ON
 LEFT - ☐ PAV'T - ~~RIGHT~~ 1.0'
9.2' TO LT EDGE PAVEMENT
 S.L.M. 186+79.6



GRID: NORTHING: 672103.044 EASTING: 1770702.953

RECORD:
 SET MAG/WASHER
 6/09/09, SAH
 GPS SVA116 SPIKE,
 8/11/08

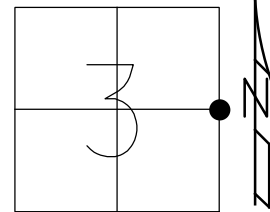
NOTE:
 BRIDGE #03.53



O.D.O.T. DISTRICT 2 SURVEY OFFICE (USE ONLY)

PERSONNEL _____ REFERENCE NO. 16 A SHEET 15 OF 30
 NOTES GARRETT DATE 7/31/20 ROUTE SR 590
 H.C. AUBLE WEATHER SUNNY COUNTY OTTAWA
 R.C. MAHLER TEMP. 72° TOWNSHIP HARRIS
 SECTION 3
 DWG BY RHOADES PID PAVING TRAIN T 6 N R 14 E

TYPE MONUMENT MAG/WASHER
 ON SURFACE - ~~BELOW~~ ON
 OFFSET 0.3' LT : ~~RT~~
9.2' TO LT EDGE PAVEMENT
 STATION: 186+79.6



HORIZ.DATUM: NAD83 2011 GEOID: 2012A
 GRID: NORTHING: 672103.156 EASTING: 1770703.036

RECORD:
 FD LG.R.R.SPIKE
 1/27/06, RGN
 FD R.R.SPIKE
 SVA116
 8/11/08, MC
 SET MAG/WASHER
 6/9/09, SAH
 FD MAG/WASHER
 REFA16
 7/31/20, DSA

