

**O.D.O.T. DISTRICT 2 SURVEY OFFICE ( Use Only )**

PERSONNEL

REFERENCE NO. 16

SHEET 12 OF 12

NOTES HUSS

DATE 01-27-06

ROUTE S.R. 590

H.C. RYAN N

WEATHER CLEAR-FAIR

COUNTY OTTAWA

R.C. RYAN H

TEMP. +31 F.

TOWNSHIP HARRIS

SECTION 2 & 3

T 6 N R 14 E

TYPE MONUMENT A=LG. RR SPK, B=MAG NAIL

ON SURFACE - ~~BELOW~~ SURFACE

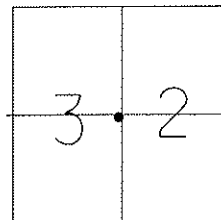
LEFT - C PAV'T - ~~RIGHT~~ A=1.0' LT, B=1.0' LT

A=9.2'  
B=9.3' TO LT. EDGE PAVEMENT

S.L.M. PT "A"=186+79.6 BRIDGE#03.53

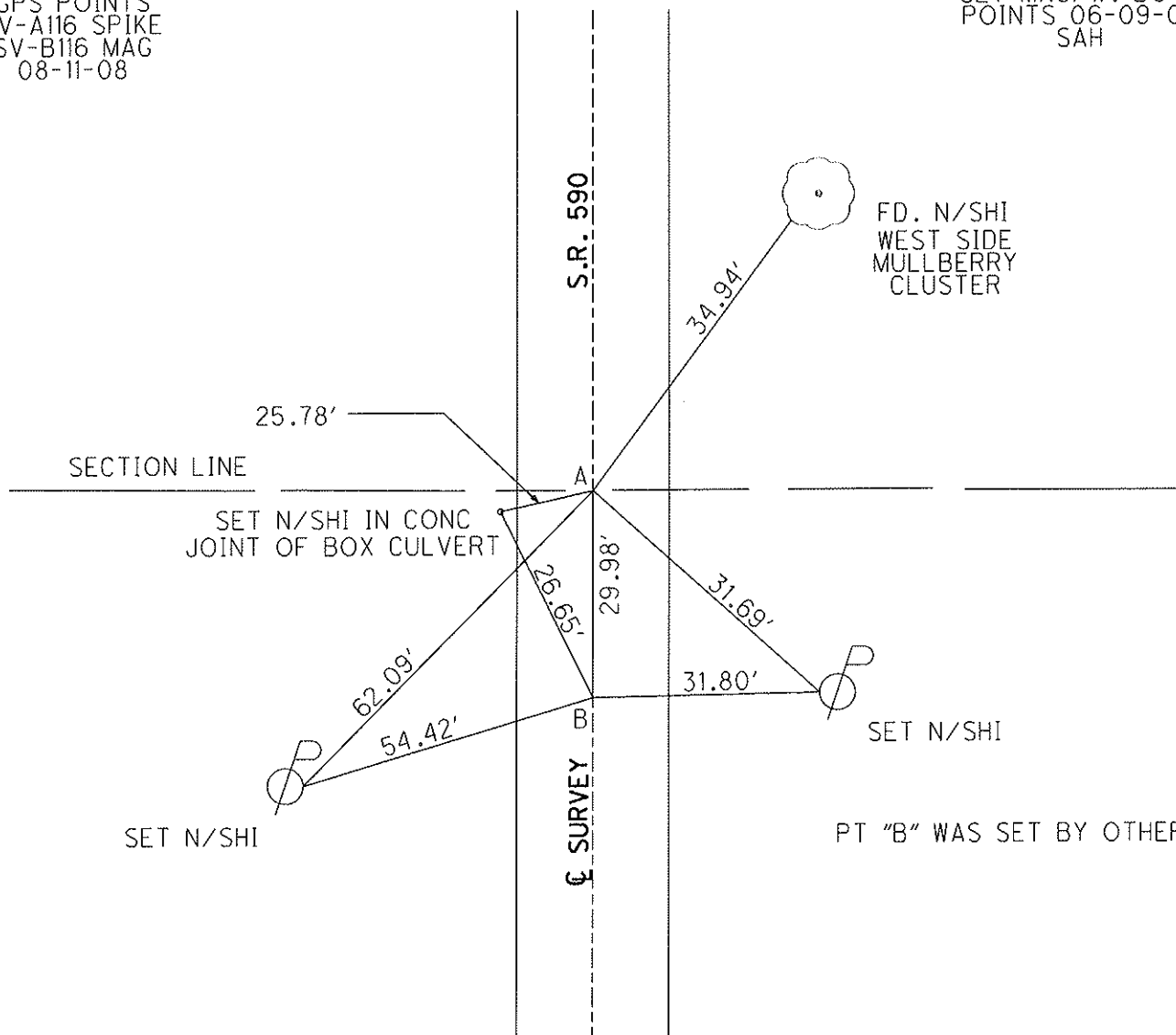
GRID: Northing: 672103.044 Easting: 1770702.953 PT "A"

GRID: Northing: 672073.069 Easting: 1770702.962 PT "B"



GPS POINTS  
SV-A116 SPIKE  
SV-B116 MAG  
08-11-08

SET MAG/W. BOTH  
POINTS 06-09-09  
SAH



O.D.O.T. DISTRICT 2 SURVEY OFFICE

PERSONNEL \_\_\_\_\_

REFERENCE NO. 10

SHEET 12 OF 12

NOTES Cheney

H.C. BARBOUR

R.C. RIPPLE

DATE 11/14/91

WEATHER Sunny

TEMP. 55°

ROUTE SR#590

COUNTY OTTAWA

TOWNSHIP HARRIS

SECTION 3 & 2

T 6 N R 14 E

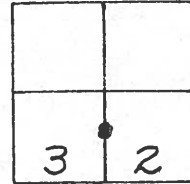
TYPE MONUMENT \_\_\_\_\_

ON SURFACE - BELOW \_\_\_\_\_

LEFT - & PAV'T. - RIGHT \_\_\_\_\_

\_\_\_\_\_ TO \_\_\_\_\_ EDGE PAVEMENT

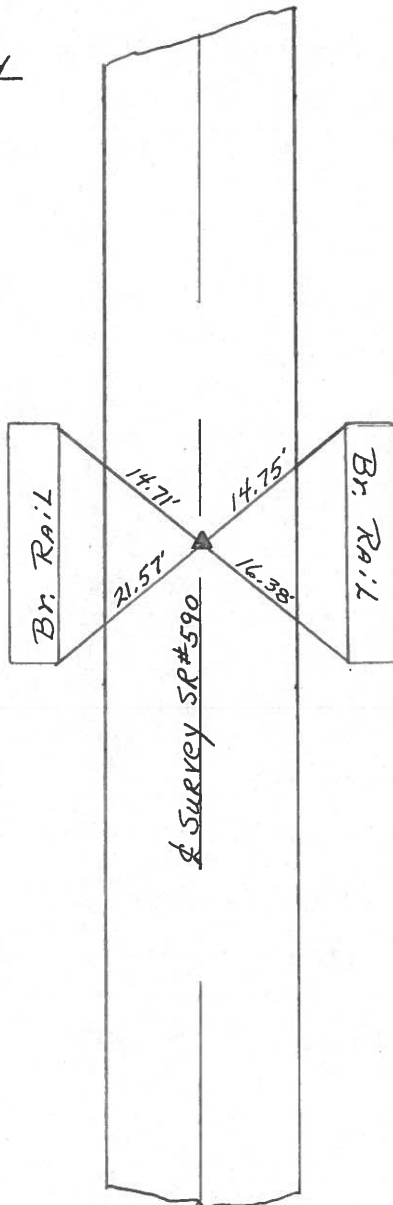
S.L.M. 185+37 Bridge #03.53



Note:

Box Culvert-Replaced

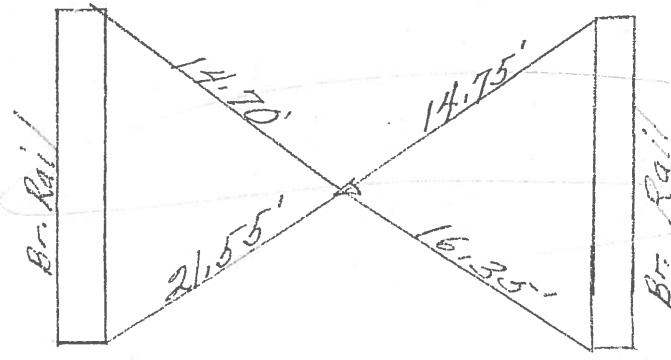
Ties GONE



PERSONNEL	TITLE	PERSONNEL	TITLE
DESCRIPTION		Between S.R. #105 and S.R. #163 Harris Twp.	
LEFT		CENTER LINE	RIGHT

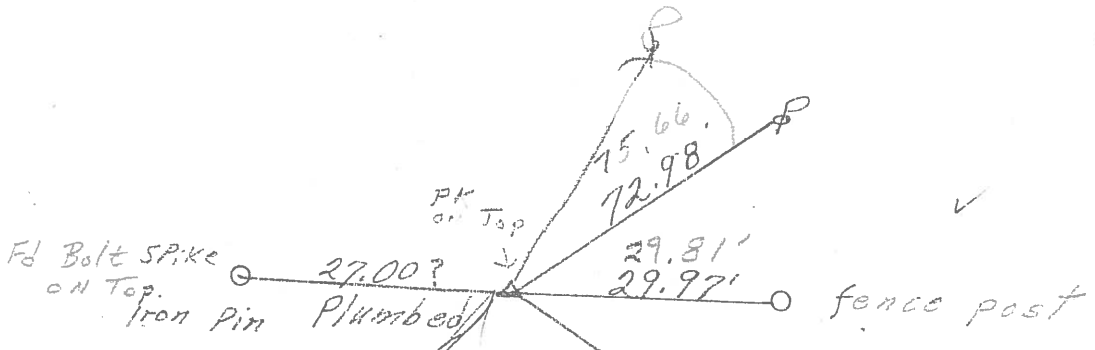
COUNTY Ottawa DATE 7-26-71  
 S. R. 590 WEATHER Rain  
 SEC. 3E2-10E11 TEMP. 75°

Void  
 New BRIDGE  
 P.I.  
 185+  
 P.K. Nail  
 Br. # 03,53



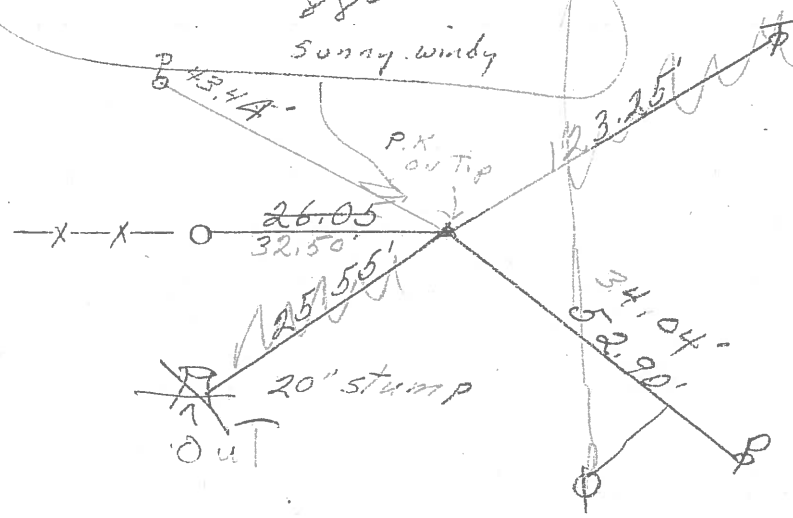
16.

5' Left &  
 159+97  
 Fd iron pin  
 on surface  
 0.5 MI. FROM  
 LAST P.I. 15



Set P.K. & washer 6/10/83  
 88°  
 Sunny, windy

P.I. 133+50  
 Fd. R.R. spk.  
 3" down  
 0.1 mi. from  
 S.R. 105  
 14  
 3' left &

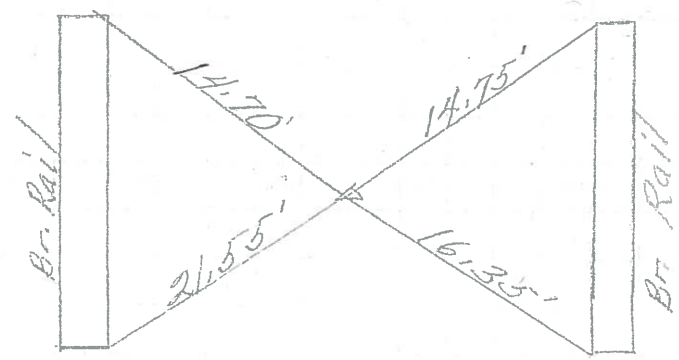


PERSONNEL	TITLE	PERSONNEL	TITLE
DESCRIPTION		Between S.R. #105 and S.R. #163 Harris Twp.	
	LEFT	CENTER LINE	RIGHT

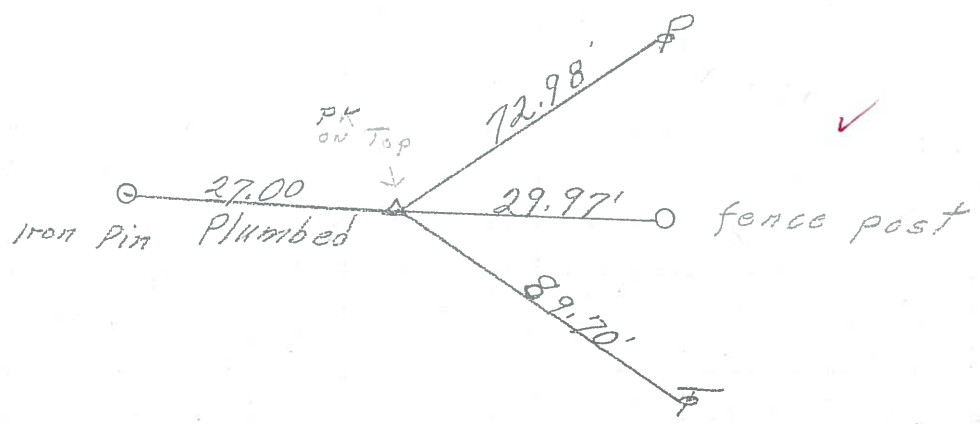
COUNTY Ottawa DATE 7-26-71  
 S. R. 590 WEATHER Rain  
 SEC. 3&2-10&11 TEMP. 75°  
 JOB NO. \_\_\_\_\_

P.I.  
 85+  
 P.K. Nail  
 Br. # 03,53

16.

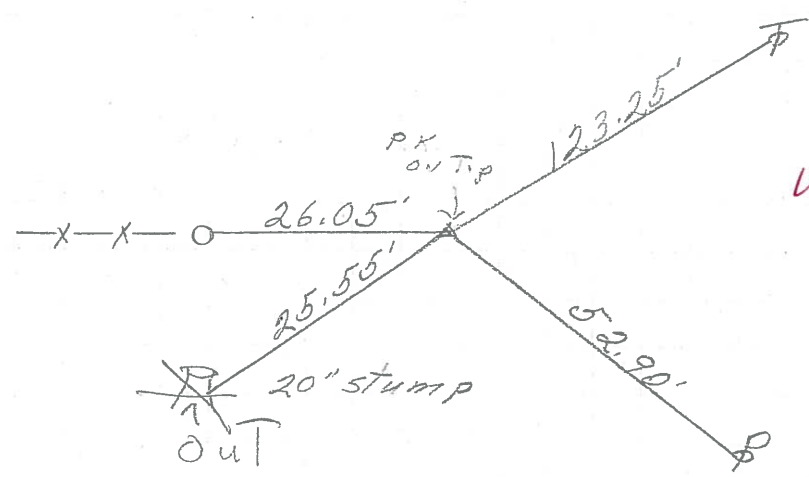


Fd iron pin  
 on surface  
 0.5 mi. from  
 LAST P.I. 15



P.I.  
 Fd. P.R. Spk.  
 3" down  
 0.1 mi. from  
 SR. 105

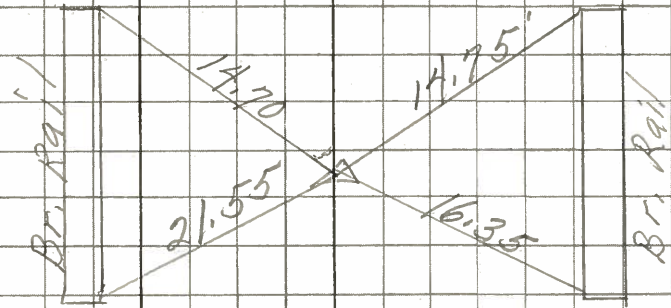
14



PERSONNEL TITLE PERSONNEL TITLE COUNTY Ottawa DATE 1-9-68  
Schneider Pots  
Mosser  
Barbour S. R. 590 WEATHER Windy  
Redding SEC. San. Co. Line North TEMP. 60°  
 DESCRIPTION Ties for Control Points JOB NO.

LEFT CENTER LINE RIGHT

S.R. # 163



P.I.  
 8.5+  
 P.K. Nail  
 Br. # 0353

Reset P.K. Nail  
 6-18-68

16

6480