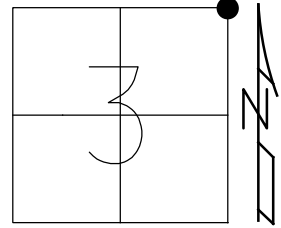


O.D.O.T. DISTRICT 2 SURVEY OFFICE (USE ONLY)

PERSONNEL \_\_\_\_\_ REFERENCE NO. 17 SHEET 16 OF 30

NOTES RHOADES \_\_\_\_\_ DATE 5/15/13 ROUTE SR 590  
 H.C. CODER \_\_\_\_\_ WEATHER WINDY COUNTY OTTAWA  
 R.C. ROUSOS \_\_\_\_\_ TEMP. 78° TOWNSHIP HARRIS  
 \_\_\_\_\_ SECTION 3  
 \_\_\_\_\_ T 6 N R 14 E

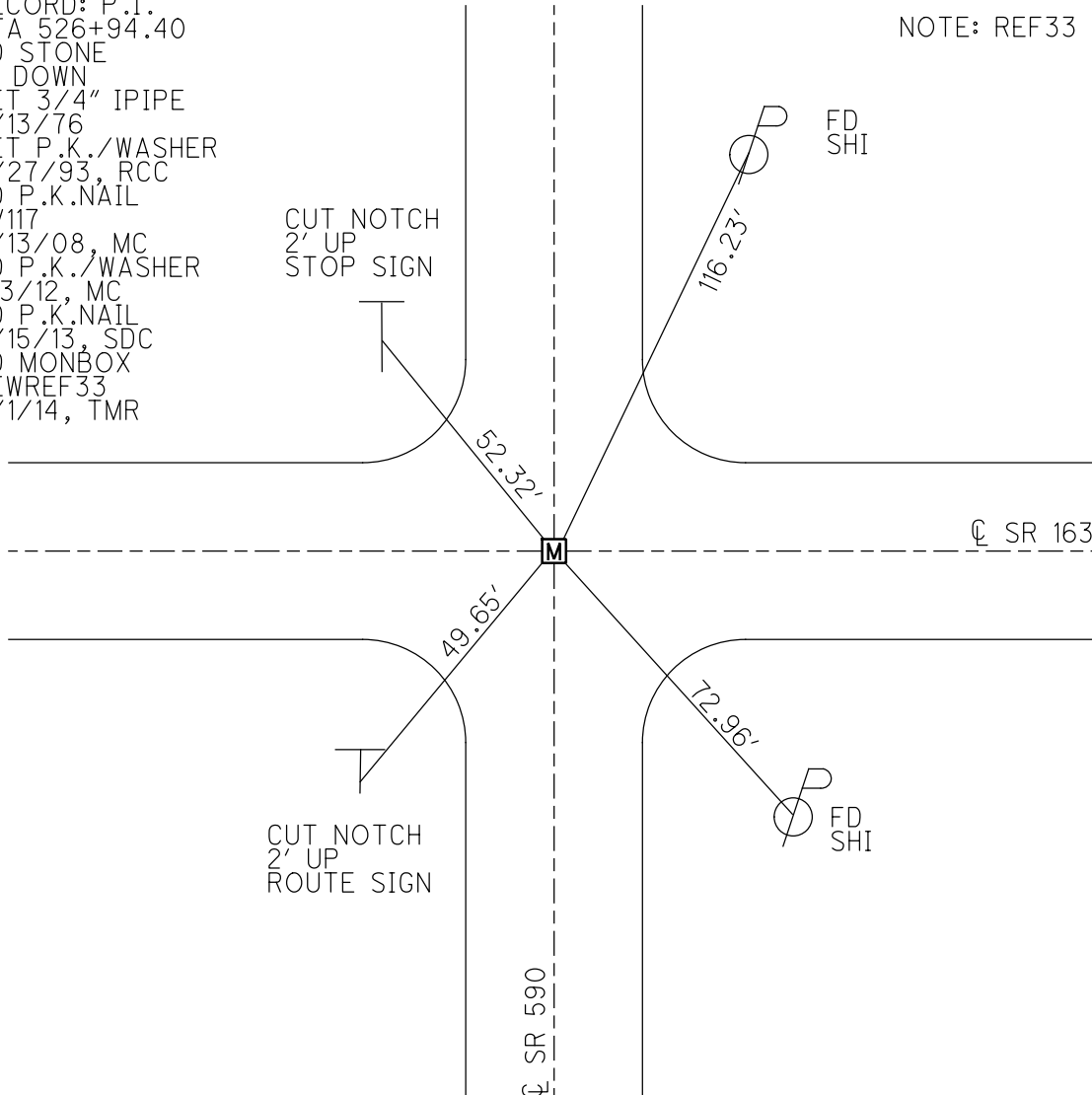
TYPE MONUMENT \_\_\_\_\_ MONBOX \_\_\_\_\_  
 ON SURFACE - ~~BELOW~~ \_\_\_\_\_ ON \_\_\_\_\_  
 LEFT - ☉ PAV'T - RIGHT \_\_\_\_\_ ON \_\_\_\_\_  
 \_\_\_\_\_ 12' TO RT EDGE PAVEMENT  
 S.L.M. 213+25



GRID: NORTHING: 674743.840 EASTING: 1770702.899

RECORD: P.I.  
 STA 526+94.40  
 FD STONE  
 6" DOWN  
 SET 3/4" IPIPE  
 8/13/76  
 SET P.K./WASHER  
 9/27/93, RCC  
 FD P.K.NAIL  
 SV117  
 8/13/08, MC  
 FD P.K./WASHER  
 1/3/12, MC  
 FD P.K.NAIL  
 5/15/13, SDC  
 FD MONBOX  
 NEWREF33  
 5/1/14, TMR

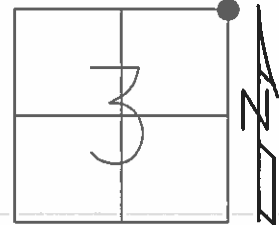
NOTE: REF33 SR 163



**O.D.O.T. DISTRICT 2 SURVEY OFFICE (USE ONLY)**

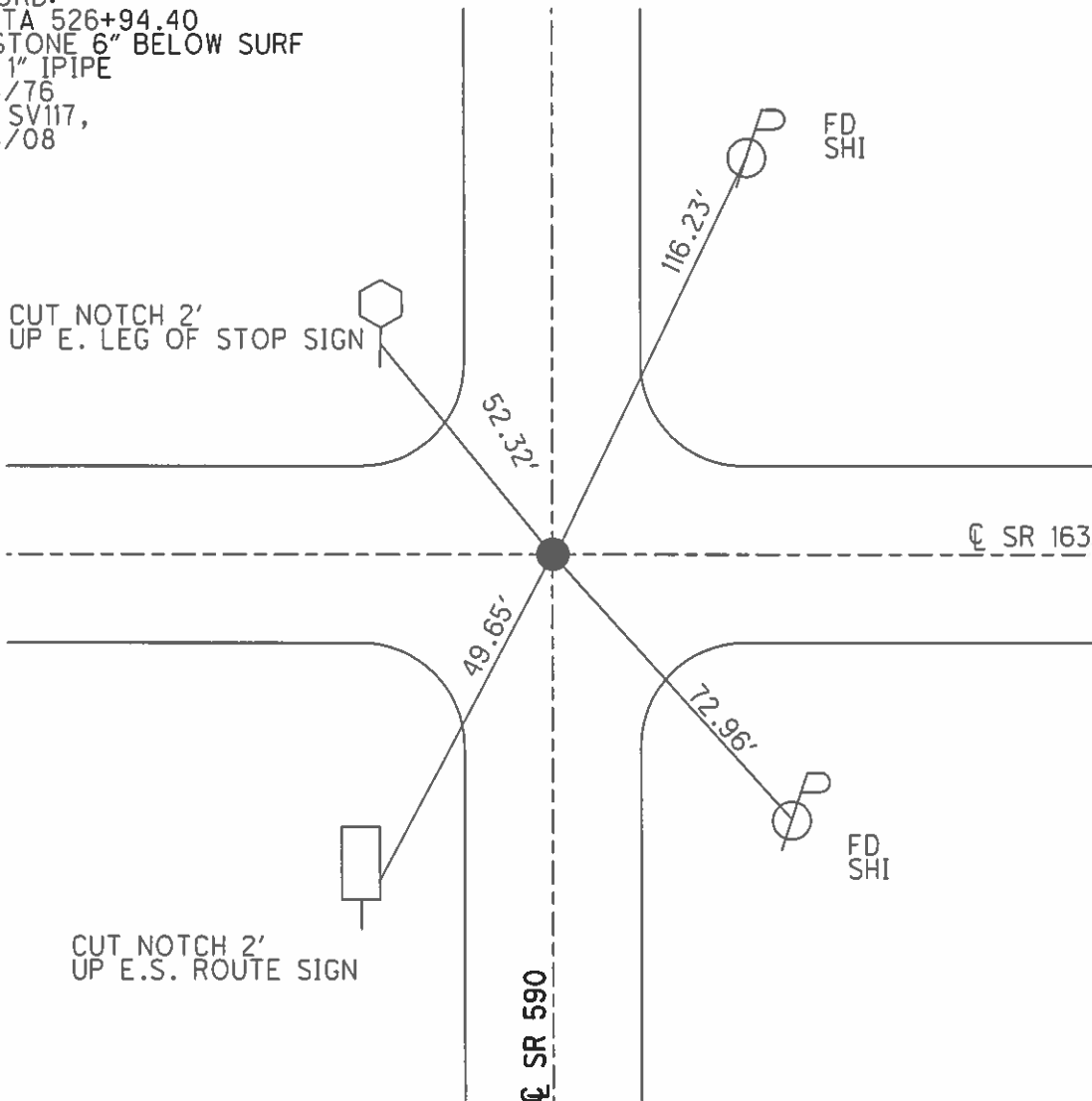
PERSONNEL \_\_\_\_\_ REFERENCE NO. 17 SHEET 16 OF 30  
 NOTES CANTERBURY DATE 6/09/08 ROUTE SR 590  
 H.C. HUSS WEATHER CLEAR COUNTY OTTAWA  
 R.C. CANTERBURY TEMP. 80° TOWNSHIP HARRIS  
 SECTION 3  
 T 6 N R 14 E

TYPE MONUMENT P.K. NAIL  
 ON SURFACE - BELOW ON \_\_\_\_\_  
~~LEFT~~ - Q PAV'T - ~~RIGHT~~ ON \_\_\_\_\_  
12' TO RT EDGE PAVEMENT  
 S.L.M. 213 + 25



GRID: NORTHING: 674743.734 EASTING: 1770702.883

RECORD:  
 PI STA 526+94.40  
 FD STONE 6" BELOW SURF  
 SET 1" IPIPE  
 8/13/76  
 GPS SV117,  
 8/13/08



**O.D.O.T. DISTRICT 2 SURVEY OFFICE** ( Use Only )

PERSONNEL \_\_\_\_\_

REFERENCE NO. 17

SHEET \_\_\_\_\_ OF \_\_\_\_\_

NOTES CANTERBURY

DATE 06-09-08

ROUTE 590

H.C. HUSS

WEATHER CLEAR

COUNTY OTTAWA

R.C. CANTERBURY

TEMP. + 80

TOWNSHIP HARRIS

SECTION 2,3,34,35

T 6N R 14E

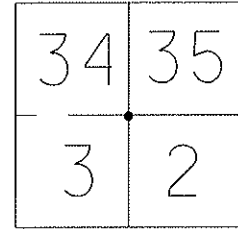
TYPE MONUMENT PK NAIL

ON SURFACE - ~~BELOW~~ SURFACE

~~LEFT~~ - C PAV'T - ~~RIGHT~~ ON C.L.

12' TO RT. EDGE PAVEMENT

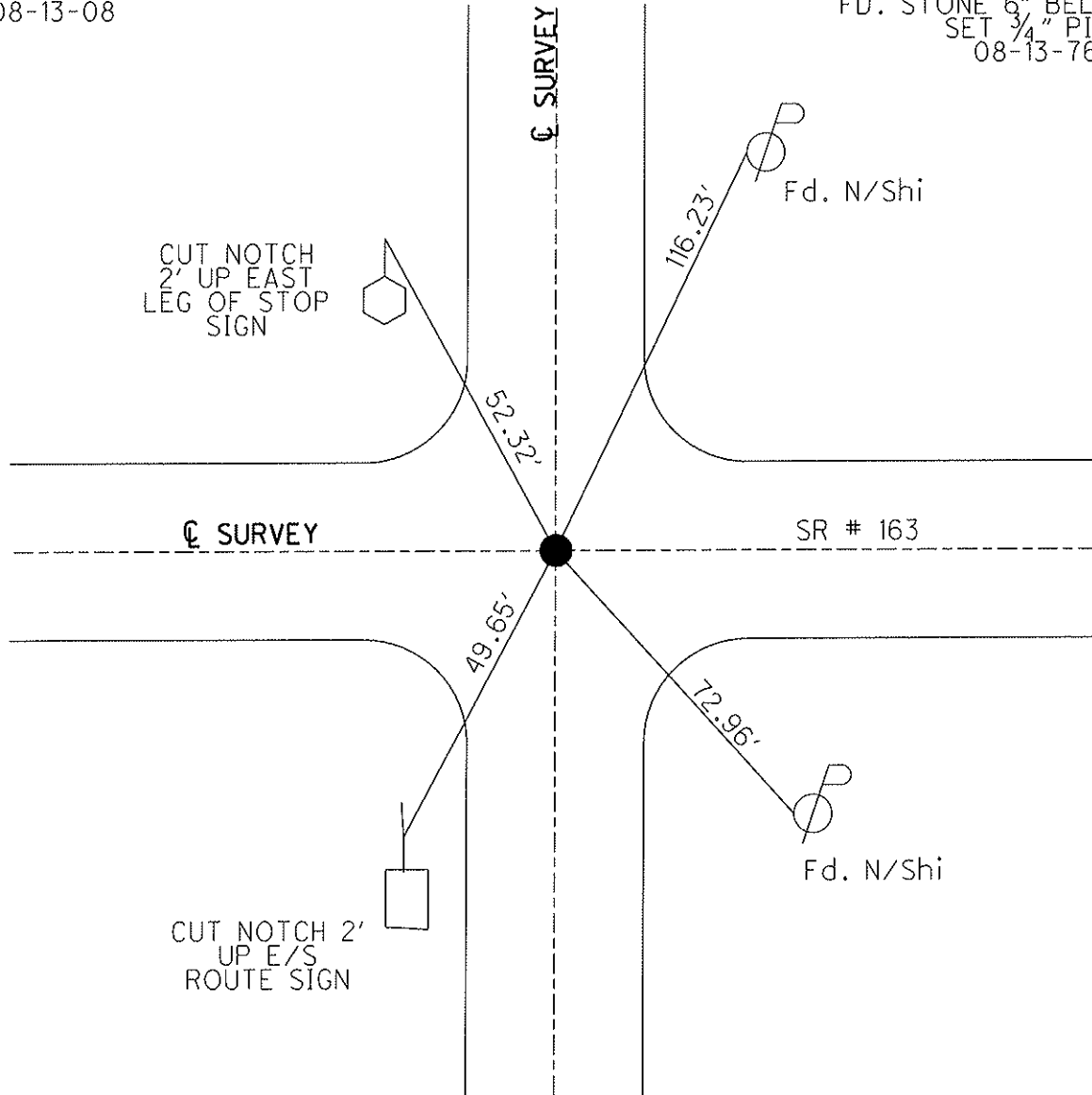
S.L.M. 213 + 25



GRID: Northing: 674743.734 Easting: 1770702.883

GPS SHOT SV-117  
08-13-08

RECORD: PI STA 526+94.40  
FD. STONE 6" BELOW SURF.  
SET 3/4" PIPE  
08-13-76



# O.D.O.T. DISTRICT 2 SURVEY OFFICE

PERSONNEL

REFERENCE NO. 33

SHEET 14 OF 24

NOTES CHENEY

H.C. RIPPLE

R.C. SARBOUR

DATE 6-17-1993

WEATHER FAIR

TEMP. 80°

ROUTE # 163

COUNTY OTAWA

TOWNSHIP HARRIS

SECTION 3, 2

T & N R 14E

TYPE MONUMENT P.K. NAIL

ON SURFACE - BELOW ON

~~12'~~ - 0 PAV'T. - RIGHT 0.5'

12' TO RT. EDGE PAVEMENT

S.L.M. 527+68

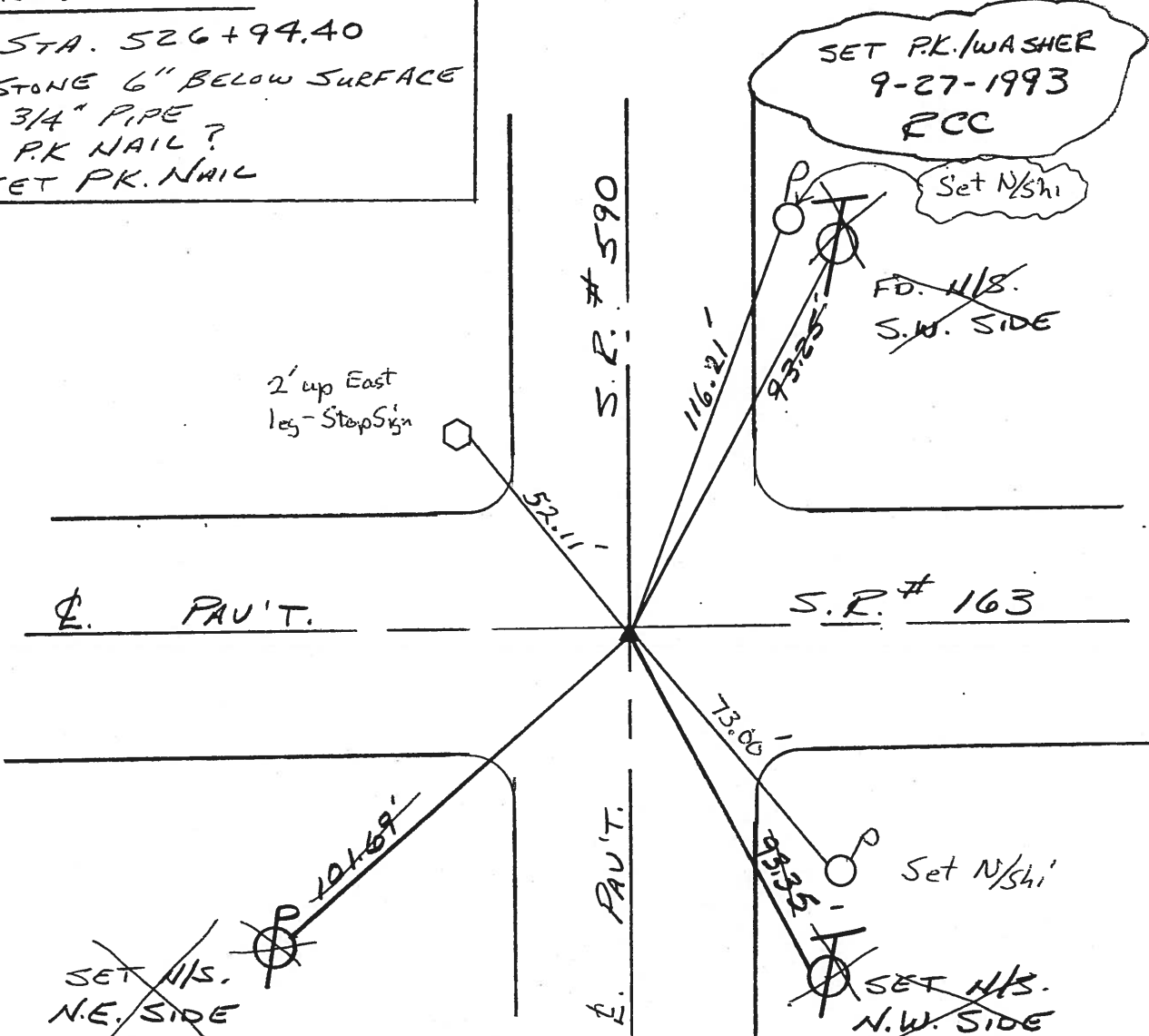
17

SEC.	SEC.
3	2



RECORD: 8-13-1976

P.I. STA. 526+94.40  
 FD. STONE 6" BELOW SURFACE  
 SET 3/4" PIPE  
 USE P.K. NAIL?  
 RESET P.K. NAIL



Preventive Maintenance  
 Microsurfaced 2000  
 Existing Point Uncovered  
 Date 5-15-00

PERSONNEL	TITLE	PERSONNEL	TITLE	COUNTY	DATE	WEATHER	TEMP.
				Ottawa	8-13-76	Fair	80°
				S. R. 163			
				SEC. 34-35 & 2-3			

DESCRIPTION Benton & Harris Twp. JOB NO. \_\_\_\_\_

