

O.D.O.T. DISTRICT 2 SURVEY OFFICE (USE ONLY)

PERSONNEL

REFERENCE NO. 18

SHEET 17 OF 30

NOTES RHOADES
 H.C. O'DONNELL
 R.C. RHOADES

DATE 2/26/18
 WEATHER SUNNY
 TEMP. 39°

ROUTE SR 590
 COUNTY OTTAWA
 TOWNSHIP BENTON
 SECTION 34
 T 7 N R 14 E

DWG BY MILLER PID 101240

TYPE MONUMENT MAG/WASHER

ON SURFACE - ~~BELOW~~ ON

OFFSET C PAVEMENT 6' LT : ~~RT~~
4' TO LT EDGE PAVEMENT

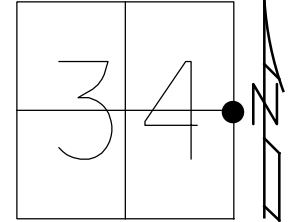
STATION: 239+96

HORZ. DATUM: NAD83-2011

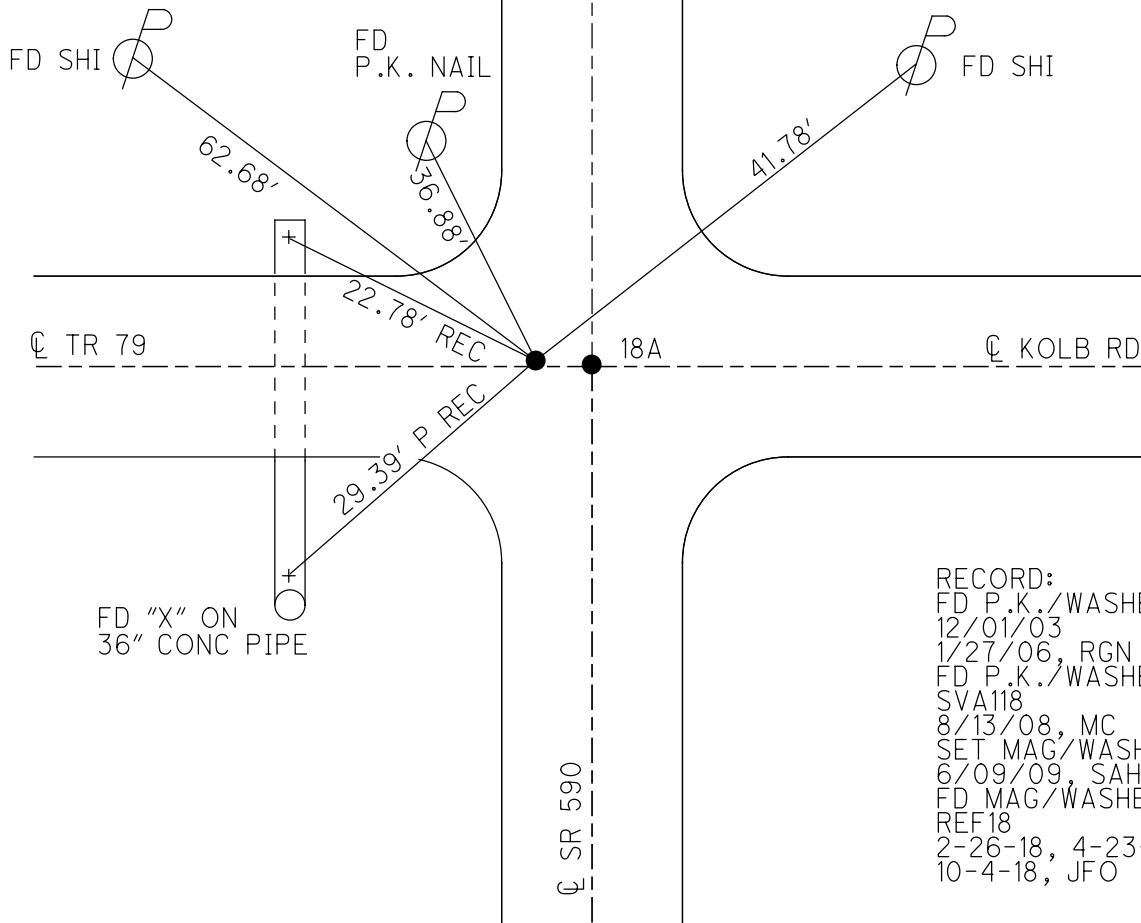
GEOID: NAVD88-2012A

GRID: NORTHING: 677405.207

EASTING: 1770714.823



DIST. 18-18A = 1.65'

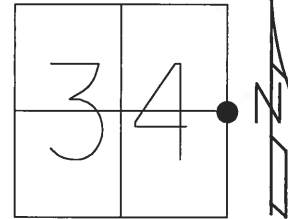


RECORD:
 FD P.K./WASHER
 12/01/03
 1/27/06, RGN
 FD P.K./WASHER
 SVA118
 8/13/08, MC
 SET MAG/WASHER
 6/09/09, SAH
 FD MAG/WASHER
 REF18
 2-26-18, 4-23-18
 10-4-18, JFO

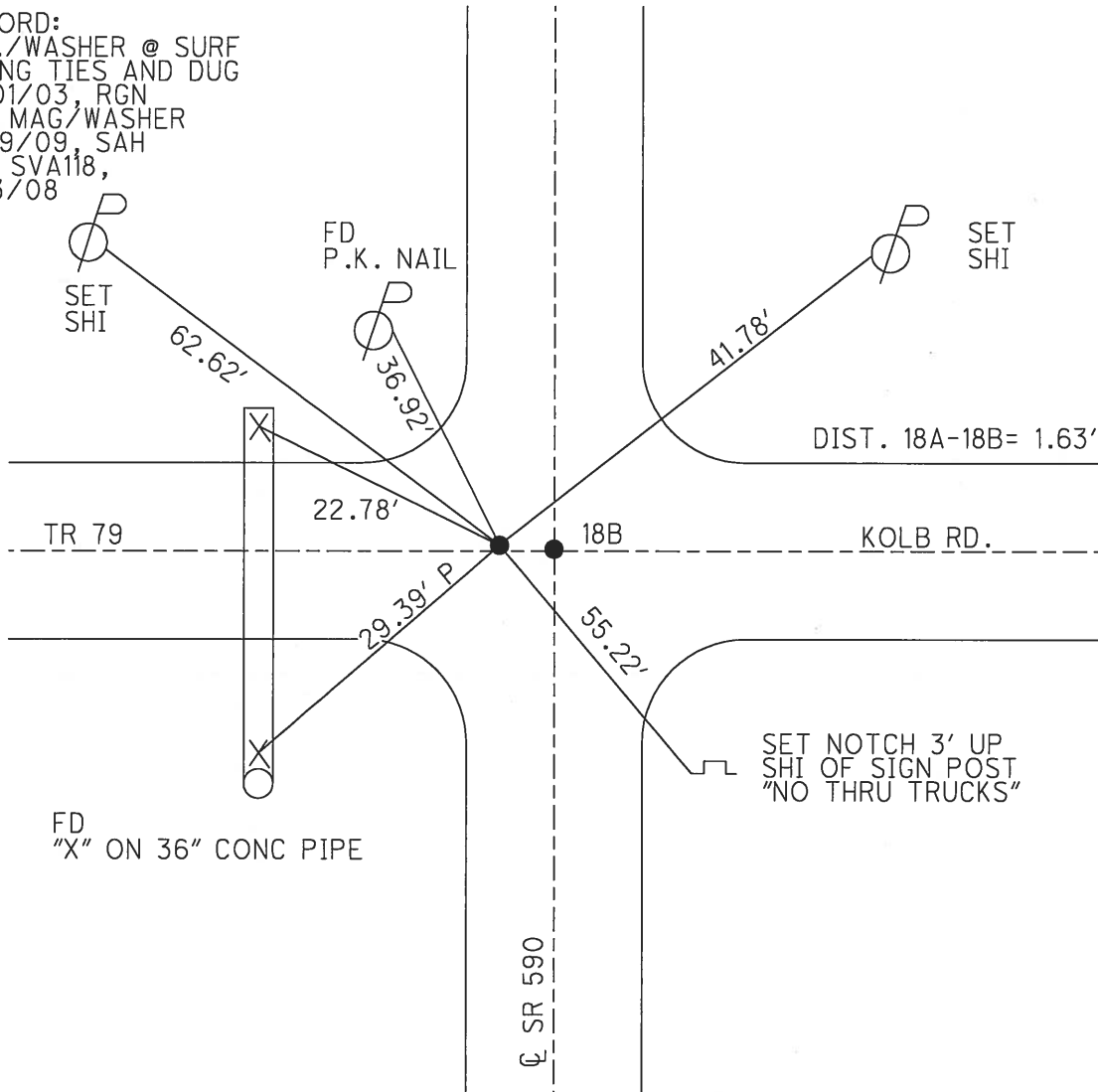
O.D.O.T. DISTRICT 2 SURVEY OFFICE (USE ONLY)

PERSONNEL _____ REFERENCE NO. 18 A SHEET 17 OF 30
 NOTES _____ HUSS _____ DATE 1/27/06 ROUTE SR 590
 H.C. _____ NUHFER _____ WEATHER CLEAR COUNTY OTTAWA
 R.C. _____ RYAN H _____ TEMP. 29° TOWNSHIP BENTON
 _____ SECTION 34
 _____ T 7 N R 14 E

TYPE MONUMENT P.K./WASHER
 ON SURFACE - ~~BELOW~~ _____ ON _____
 LEFT - ☉ PAV'T - ~~RIGHT~~ _____ 6'
4.0' TO LT EDGE PAVEMENT
 S.L.M. _____ 239+96
 GRID: NORTHING: 677405.203 EASTING: 1770714.757



RECORD:
 P.K./WASHER @ SURF
 SWUNG TIES AND DUG
 12/01/03, RGN
 SET MAG/WASHER
 6/09/09, SAH
 GPS SVA118,
 8/13/08



SET NOTCH 3' UP
 SHI OF SIGN POST
 "NO THRU TRUCKS"

O.D.O.T. DISTRICT 2 SURVEY OFFICE

PERSONNEL

REFERENCE NO. 18 SHEET 1 OF 1

NOTES RIPPLE

H.C. BARBOUR

R.C. GEYMAN

DATE 8/06/90 DRAWN 8/08/90

WEATHER Cloudy

TEMP. 62°

ROUTE SR # 590

COUNTY OTTAWA

TOWNSHIP BENTON

SECTION E 1/4 Post Sec. 34-W 1/4 Post Sec. 3

T 7 N R 14 E

TYPE MONUMENT P.K. & Washer

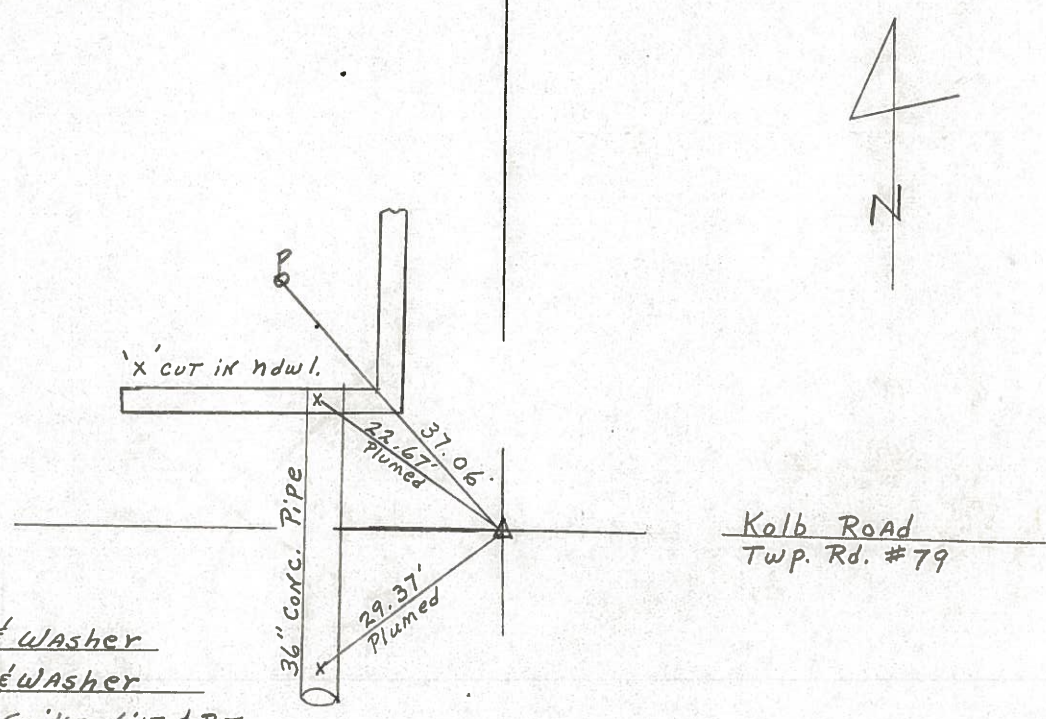
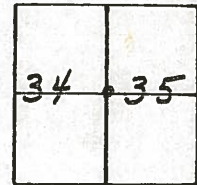
ON SURFACE - BELOW RR. Spike

LEFT - CL. PAV'T. - RIGHT 6' LT. & P.V.T.

TO EDGE PAVEMENT

S.L.M. _____

18A



Set P.K. & Washer
A top P.K. & Washer
A top RR. Spike - 6' LT. & P.V.T.

CL SR # 590

County Ottawa S.R. #590

Township Benton

Section E 1/4 Post Sec. 34 - W 1/4 Post Sec 35

T2N, R14E

Personnel Cronin - Draw

Ripple

Geyman

Messer

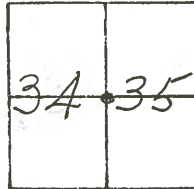
Barbour

#18A

Date 7/19/82 Drawn 8/5/82

Weather sunny - humid

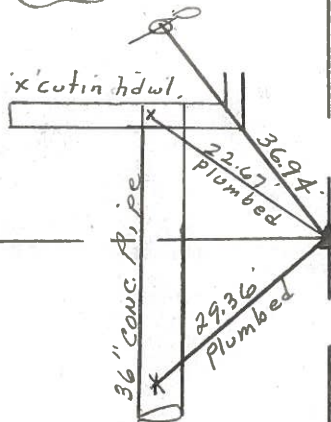
Temp. 85°



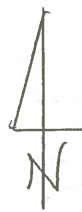
NOTE :

TIES DO NOT FIT
 CO. TIES. CO. FD. STONE
 12/8/65. (SEE CO. TIES)

Set P.K. & washer
 a top P.K. & washer a top
 R.R. spike - 6'lt. & P.V.T.



VOID
 ORIGIN UNKNOWN

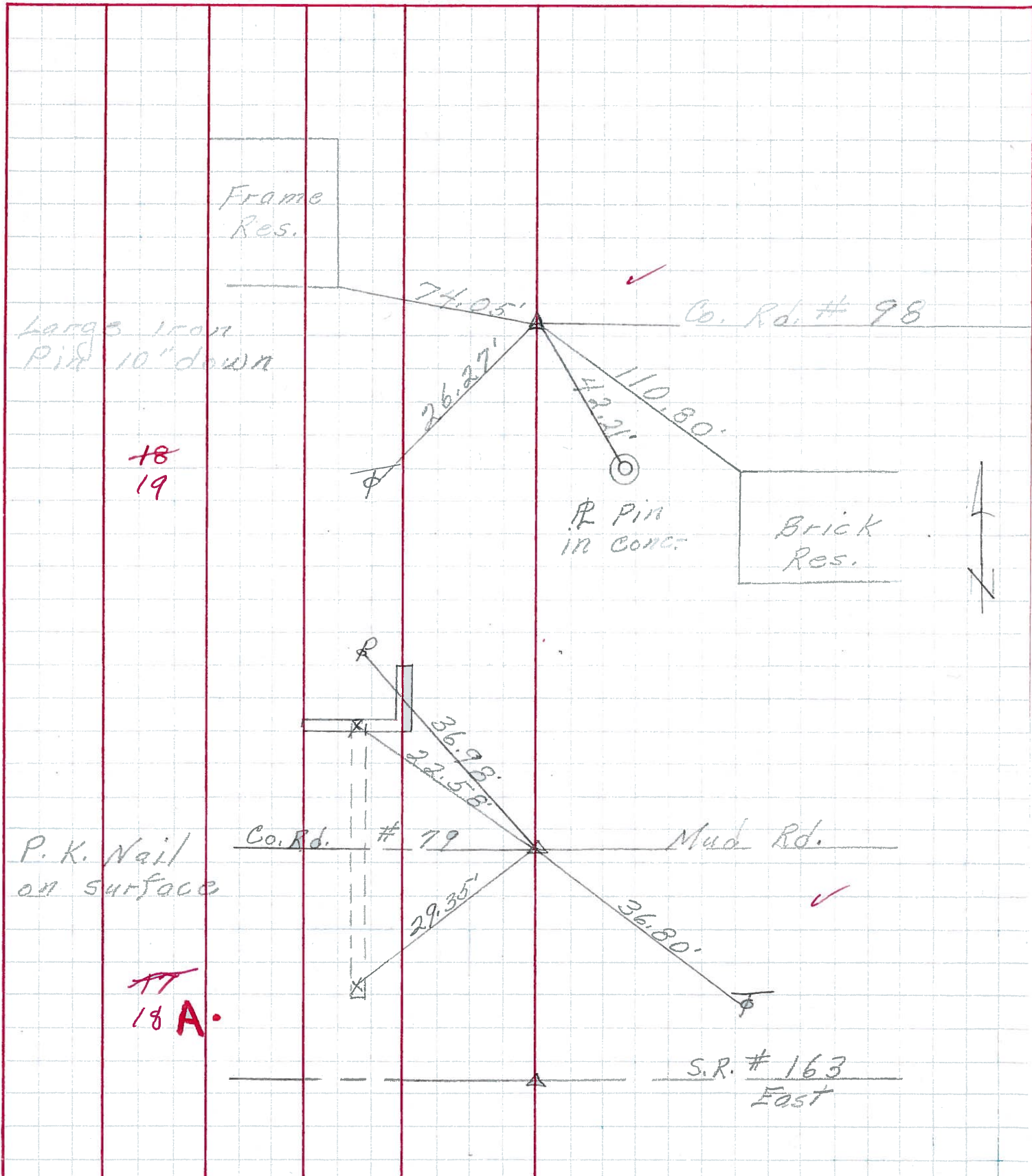


R. S.R. # 5907

PERSONNEL	TITLE	PERSONNEL	TITLE

COUNTY Ottawa DATE 7-26-71
 S. R. 590 WEATHER Cloudy
 SEC. 34 6 35 TEMP. 750

DESCRIPTION S.R. #163 to S.R. #2 Benton Twp. JOB NO. _____
 LEFT CENTER LINE RIGHT



PERSONNEL TITLE PERSONNEL TITLE

Schneider
Mosser
Barbour

COUNTY Ottawa DATE 6-21-68

S. R. 590 WEATHER Cloudy - windy

SEC. S.R.#163 to S.R.#2 TEMP. 60°

DESCRIPTION Ties for Control Points JOB NO.

LEFT CENTER LINE RIGHT

