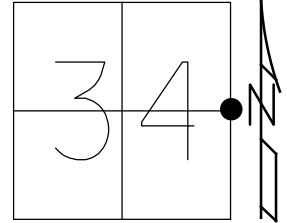


O.D.O.T. DISTRICT 2 SURVEY OFFICE (USE ONLY)

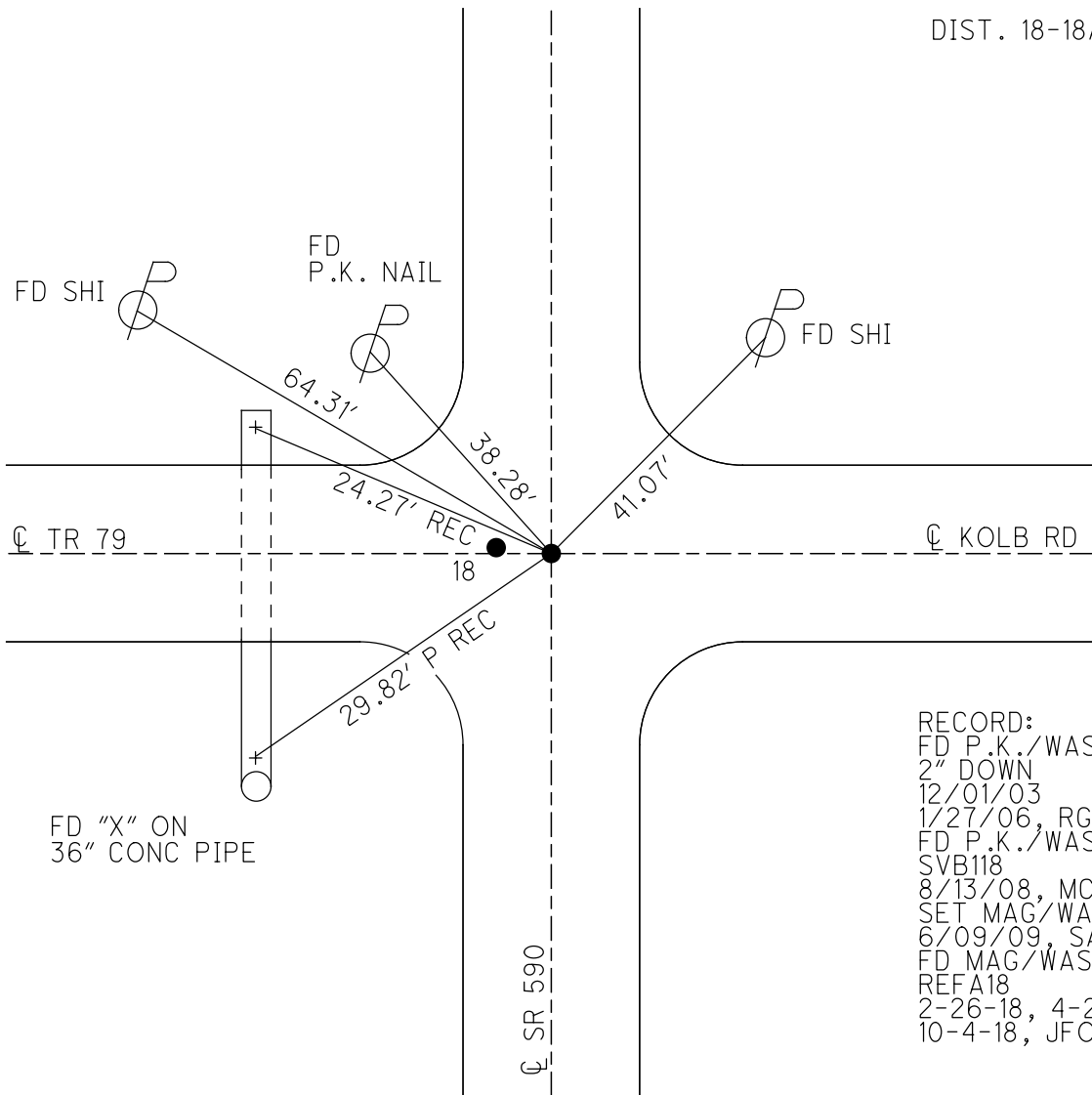
PERSONNEL _____ REFERENCE NO. 18 A SHEET 18 OF 30
 NOTES RHOADES DATE 2/26/18 ROUTE SR 590
 H.C. O'DONNELL WEATHER SUNNY COUNTY OTTAWA
 R.C. RHOADES TEMP. 39° TOWNSHIP BENTON
 DWG BY MILLER PID 101240 SECTION 34
 T 7 N R 14

TYPE MONUMENT MAG/WASHER
 ON SURFACE - ~~BELOW~~ ON
 OFFSET CL PAVEMENT 4.4' LT : ~~RT~~
5.5' TO LT EDGE PAVEMENT
 STATION: 239+96



HORZ.DATUM: NAD83-2011 GEOID: NAVD88-2012A
 GRID: NORTHING: 677404.603 EASTING: 1770716.359

DIST. 18-18A= 1.65'

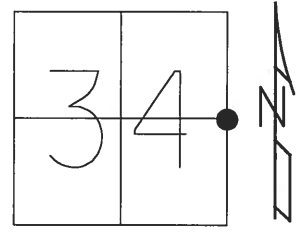


RECORD:
 FD P.K./WASHER
 2" DOWN
 12/01/03
 1/27/06, RGN
 FD P.K./WASHER
 SVB118
 8/13/08, MC
 SET MAG/WASHER
 6/09/09, SAH
 FD MAG/WASHER
 REF A18
 2-26-18, 4-23-18
 10-4-18, JFO

O.D.O.T. DISTRICT 2 SURVEY OFFICE (USE ONLY)

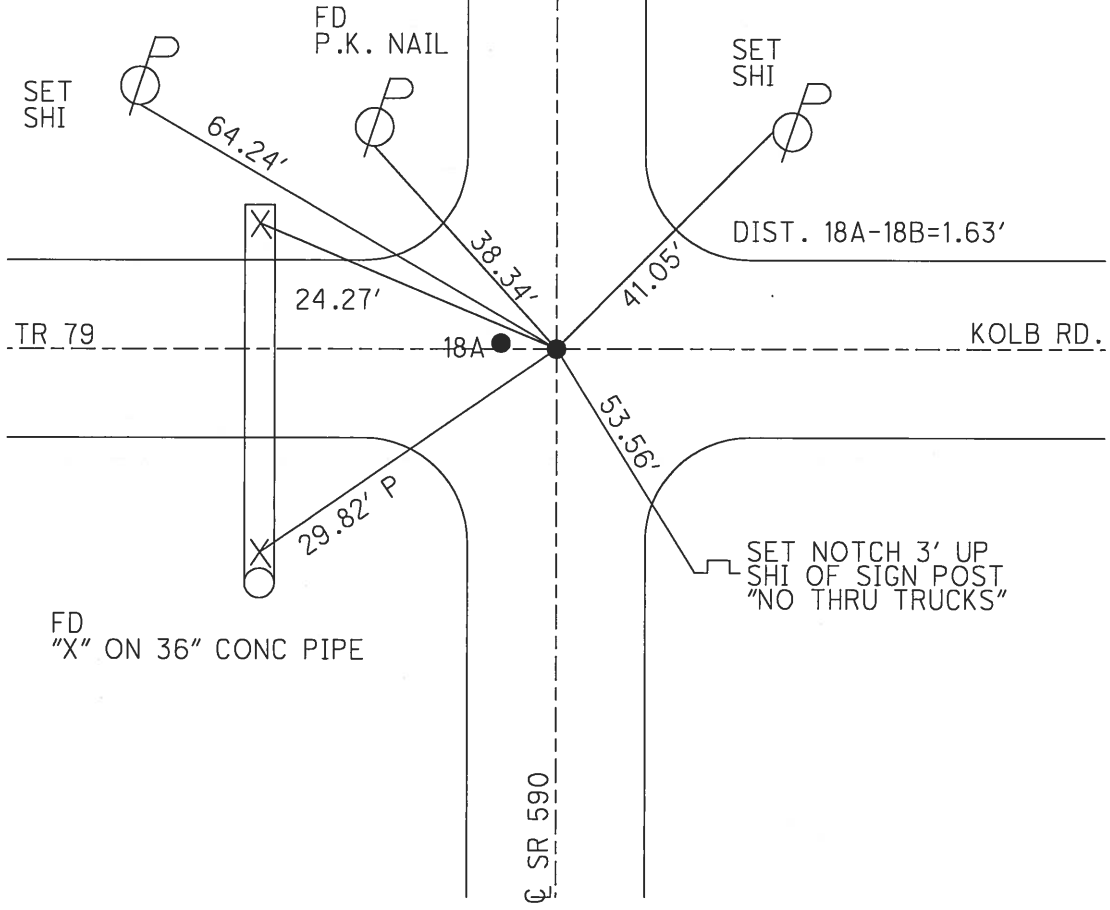
PERSONNEL _____ REFERENCE NO. 18 B SHEET 18 OF 30
 NOTES HUSS DATE 1/27/06 ROUTE SR 590
 H.C. NUHFER WEATHER CLEAR COUNTY OTTAWA
 R.C. RYAN H TEMP. 29° TOWNSHIP BENTON
 _____ SECTION 34
 _____ T 7 N R 14 E

TYPE MONUMENT P.K./WASHER
~~ON SURFACE~~ - BELOW 0.2'
 LEFT - ☉ PAV'T - ~~RIGHT~~ 4.4'
5.5' TO LT EDGE PAVEMENT
 S.L.M. 239+96



GRID: NORTHING: 677404.586 EASTING: 1770716.305

RECORD:
 P.K./WASHER 2" DOWN
 SWUNG TIES AND DUG
 12/01/03, RGN
 SET MAG/WASHER
 6/09/09, SAH
 GPS SVB118, 8/13/08



O.D.O.T. DISTRICT 2 SURVEY OFFICE (Use Only)

PERSONNEL _____

REFERENCE NO. 18

SHEET _____ OF _____

NOTES HUSS

DATE 1-27-06

ROUTE S.R. 590

H.C. RYAN N

WEATHER CLEAR

COUNTY OTTAWA

R.C. RYAN H

TEMP. +29

TOWNSHIP BENTON

SECTION 34 & 35

T 7 N R 14 E

TYPE MONUMENT _____

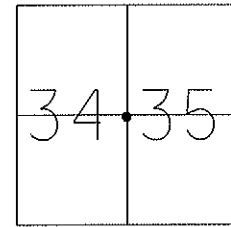
PT "A"= P.K./WASHER
PT "B"= P.K. NAIL

ON SURFACE - BELOW A= SURF B= 0.2' DOWN

LEFT - ☉ PAV'T ~~RIGHT~~ A= 6'LT B= 4.4'LT

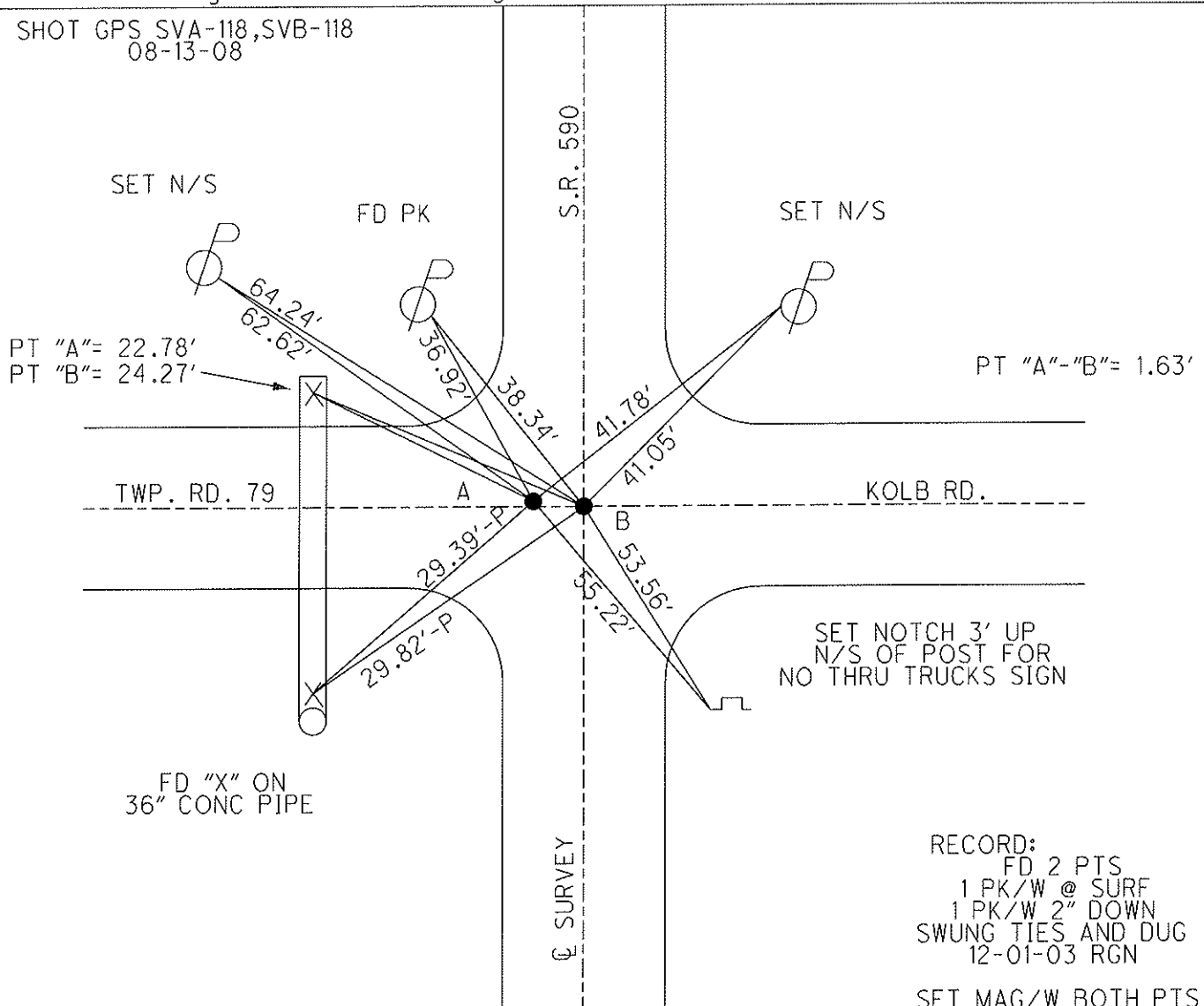
A=4.0'
B=5.5' TO LT EDGE PAVEMENT

S.L.M. 239+96



GRID: Northing: 677405.203 Easting: 1770714.757 PT "A"
GRID: Northing: 677404.586 Easting: 1770716.305 PT "B"

SHOT GPS SVA-118,SVB-118
08-13-08



RECORD:
FD 2 PTS
1 PK/W @ SURF
1 PK/W 2" DOWN
SWUNG TIES AND DUG
12-01-03 RGN
SET MAG/W BOTH PTS
6-09-09 SAH

50

BENTON

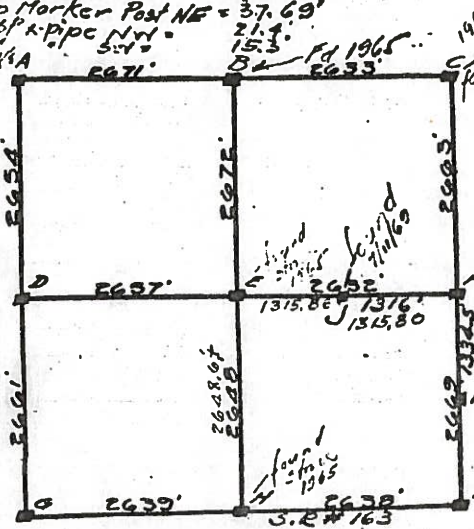
C = 7/19/69 Fd. pointed hard head stone T7.

4 1/2 x 5 x 10 - 5' below exist. Pavt. Fd original Flat Hard head stone - 6 x 8 Top 16 1/2" below exist West Pavt edge - Under TOP Stone

TOP stone was 018.55E & 0.05 NE of center of Original stone. Removed top stone - placed screw iron above PK Nail Po Po SE = 34.83' PK Nail Bruce Po SW = 23.00' Face of Sign Marker Post NE = 37.69' No. End 12" x 1/2" x pipe NW = 21.4' 50' set 2 Ea - 2.0' PK's = 15.3' 51' Fd 1965 = 15.3' 52' E633'

B = 12/6/65 found 4 x 4 1/2" Top sandstone - 19 1/4" down

4 1/2" Oak Trcc SE = 14.18' PK Nail Tel. Po SE = 32.77' PK " Po Po NE = 76.88' 2 24" cation wood Tree SW = 63.14' PK Nail Po Po NW = 26.71' PK Nail Po Po WNW = 23.80' PK Nail Tel. Pavt SW = 76.87' set (3) - 3' PK's on Rd.



C = 19 1/2' from cen. N. end of culv. 16 1/2' from cen. S. end of culv.

C = 1963 - found 1 Pin PK Nail Po Po NB = 26.38' PK Nail Tel. Po SW = 32.54' PK " 18" maple SW = 32.77' G. Basin Grate SW = 41.31' PK " 18" maple SW = 48.90' (6 1/2" spaced track N. 1965.22' E. Plan.)

F = 20' from center N. end of culv. 13 1/2' from cen. S. end of culv. 8/3/54 Bot. cap. po. po. SE = 28.45' " " stub po. SW = 23.35' " " post NW = 30.60'

21.5' from cen. S. end of culv. 19.6' from cen. N. end of culv.

Bot. Cap in Oak Tr. N. = 23.1' 7/20/1969 - found triangular shaped hard head 10 x 7 1/2 x 8" - 1.3" under surface of exist. Mod Pavt. slope pipe on side of stone - 1E, SW, NW set 3 Ea - 2.0' PK's NE = 66.60' 3 nails in Tel. Po NE = 32.10' K = Bot. cap in elm NE = 32.10' 2 nails in Tel. po. SW = 25.22'

SEC. 35

D = 12/6/65 found pointed top 3 1/2 x 3 1/2 x 12" high Limestone 12 3/4" down - cut New drill hole

PK Nail Po Po NW = 38.41' PK Nail Tel. Po SE = 32.24' M. 55' H.G. SW cor. House NE = 84.13' 66" Conc. K pipe NW = 23.95' 2 Tongue 66" Conc. K pipe SW = 30.27' 66" conc pipe - 41.0' OAL

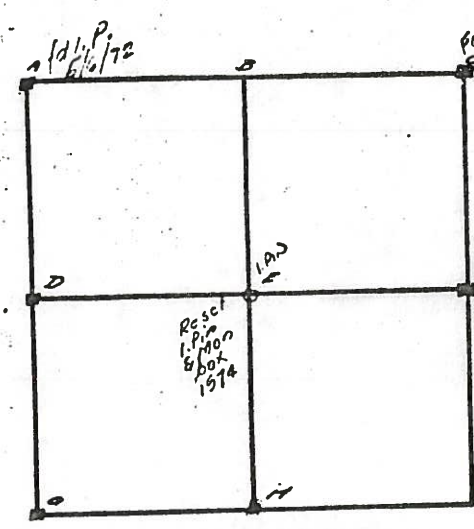
* E = 12/6/65 found 8 1/2" x 8" (actual top 4" x 8" base head - 16" down) Drilled hole 12" top SW cor House Foundation NE = 76.28' SW cor Attached Garage Found NB = 86.84' PK Nail Po Po SE = 28.87' PK " Tel. Po NW = 32.54' SB - (Shingle Corner) House NW = 100.20'

I = RR. spt. in pave. 2 nails in Hick SE 32.18' 2 " in stub. po SE 48.72' 2 " in Po. P. NE 35.45' 2 " " " SW 31.47' 2 " in Tel. po. NW 28.90'

H = 12/6/65 found 8 1/2 x 8" top - 17 1/2" down - limestone New drill hole in top PK Nail Po Po NW = 31.78' PK Nail Po Po NNW = 122.41' PK Nail Po Po SW = 23.48' PK Nail Po Po ENE = 90.75' set (3) - 3' PK's - N-3 chainage 2648.6 x E. H. H.

A = May 6, 1972 R. Steinmiller - Fd. 1 Pin 12" below existing pavt. Top set 3 PK Nails at 2.0' PK Nail 24" Maple Tree SW = 32.68' PK Nail Po Po NE = 31.84' PK " 101 Po SW = 32.65' PK " 24" Maple Tree SW = 48.76' G. Basin Grate SW = 41.65'

A = same as "C" Sec. 35 D = same as "F" Sec. 35



SEC. 36

F = Guy F. SE = 2245' " " NW = 519' RR Spt Po Po SW = 314' End to E. W. Fence SE = 926' Dis. to Stone = 90.2'

F = 7/20/74 R. Steinmiller - Found 6 x 5 1/2 x 15 1/2" "Pilot" Stone with 2 Ea. - 2 x 2 x 24" wood stakes on East & West side. Stone 5 1/4" below Pavt Top Removed Pilot Stone Found Original 5 x 5 x 13 1/2" high Triangular Top Limestone 17 1/2" below Pavt Top