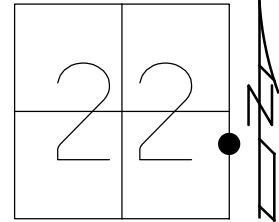


O.D.O.T. DISTRICT 2 SURVEY OFFICE (USE ONLY)

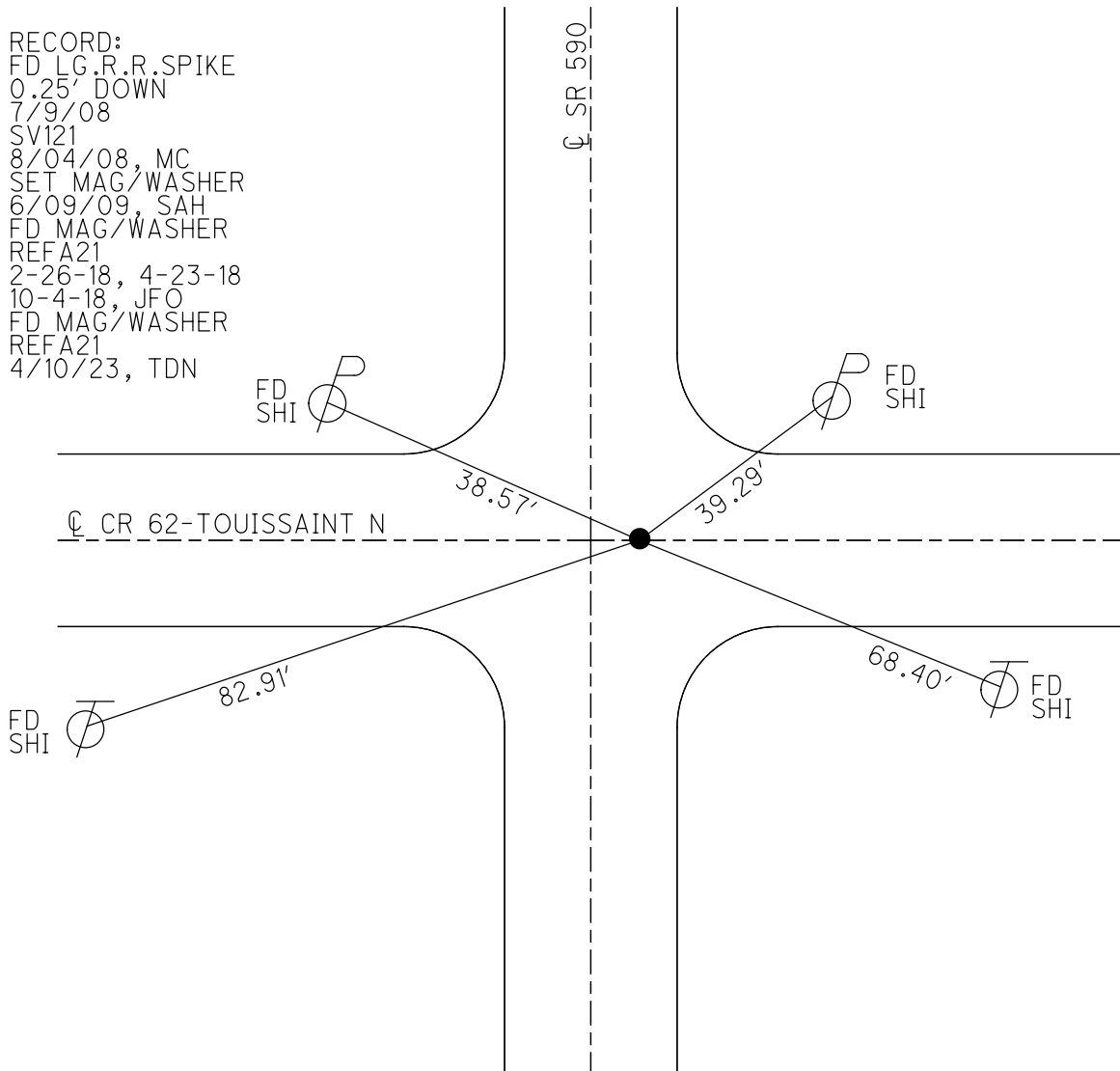
PERSONNEL \_\_\_\_\_ REFERENCE NO. 21 A SHEET 22 OF 30  
 NOTES RHOADES DATE 2/26/18 ROUTE SR 590  
 H.C. O'DONNELL WEATHER SUNNY COUNTY OTTAWA  
 R.C. RHOADES TEMP. 41° TOWNSHIP BENTON  
 DWG BY MILLER PID 101240 SECTION 22  
 T 7 N R 14 E

TYPE MONUMENT MAG/WASHER  
 ON SURFACE - ~~BELOW~~ ON  
 OFFSET Q PAVEMENT 8' ~~LT~~ : RT  
- TO - EDGE PAVEMENT  
 STATION: 341+54



HORZ. DATUM: NAD83-2011 GEOID: NAVD88-2012A  
 GRID: NORTHING: 687531.717 EASTING: 1770823.389

RECORD:  
 FD LG.R.R.SPIKE  
 0.25' DOWN  
 7/9/08  
 SV121  
 8/04/08, MC  
 SET MAG/WASHER  
 6/09/09, SAH  
 FD MAG/WASHER  
 REFA21  
 2-26-18, 4-23-18  
 10-4-18, JFO  
 FD MAG/WASHER  
 REFA21  
 4/10/23, TDN



O.D.O.T. DISTRICT 2 SURVEY OFFICE (USE ONLY)

PERSONNEL

REFERENCE NO. 21 A

SHEET 22 OF 30

NOTES RHOADES

DATE 2/26/18

ROUTE SR 590

H.C. O'DONNELL

WEATHER SUNNY

COUNTY OTTAWA

R.C. RHOADES

TEMP. 41°

TOWNSHIP BENTON

SECTION 22

DWG BY MILLER PID 101240

T 7 N R 14 E

TYPE MONUMENT MAG/WASHER

ON SURFACE - ~~BELOW~~ ON

OFFSET Q PAVEMENT 8' ~~LT~~ : RT

- TO - EDGE PAVEMENT

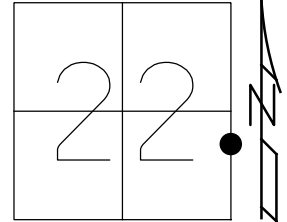
STATION: 341+54

HORZ. DATUM: NAD83-2011

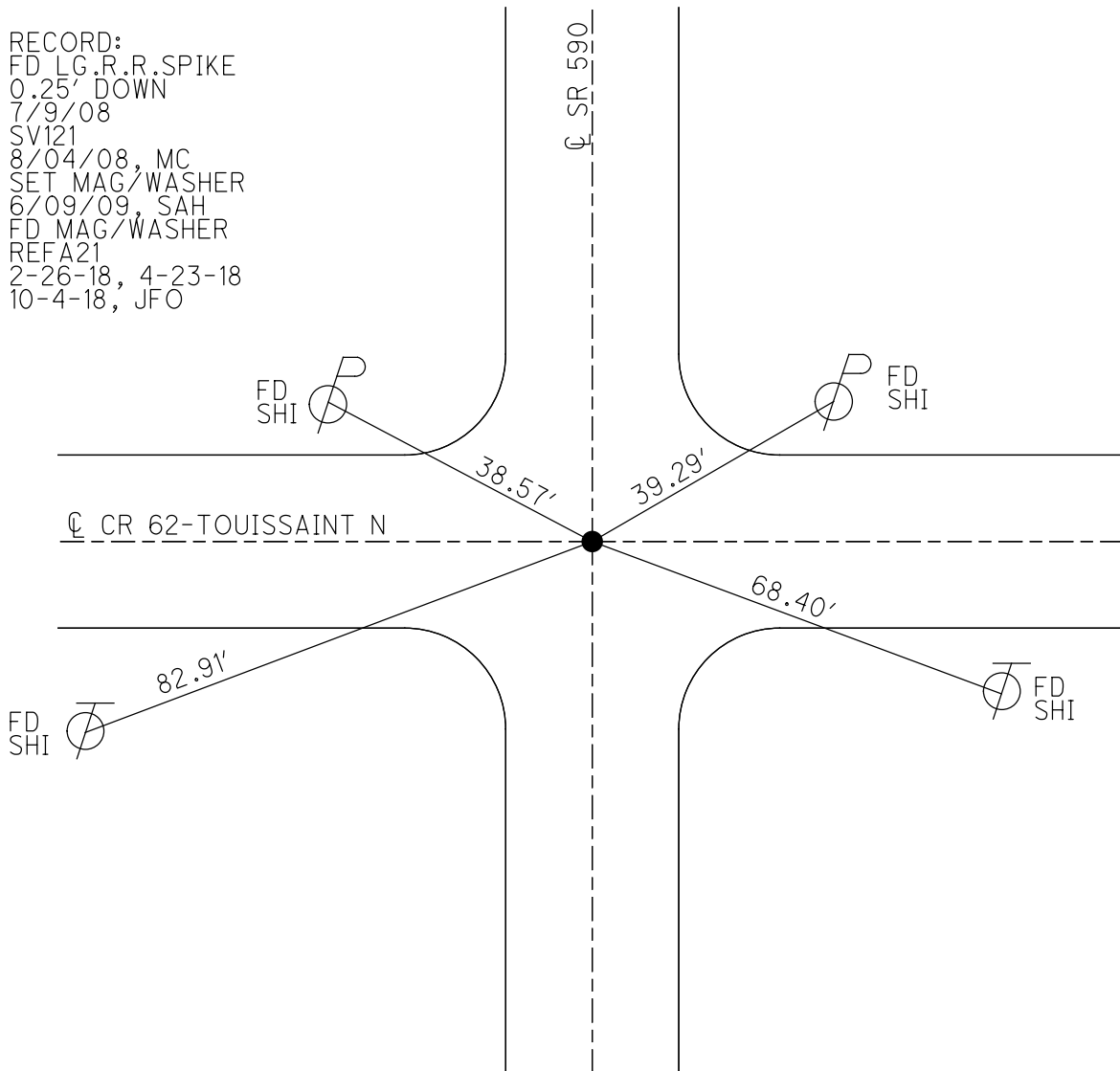
GEOID: NAVD88-2012A

GRID: NORTHING: 687531.728

EASTING: 1770823.394



RECORD:  
 FD LG.R.R.SPIKE  
 0.25' DOWN  
 7/9/08  
 SV121  
 8/04/08, MC  
 SET MAG/WASHER  
 6/09/09, SAH  
 FD MAG/WASHER  
 REFA21  
 2-26-18, 4-23-18  
 10-4-18, JFO



**O.D.O.T. DISTRICT 2 SURVEY OFFICE (USE ONLY)**

PERSONNEL \_\_\_\_\_ REFERENCE NO. 21 A SHEET 22 OF 30

NOTES CANTERBURY DATE 07/09/08 ROUTE SR 590  
 H.C. HUSS WEATHER FAIR COUNTY OTTAWA  
 R.C. CANTERBURY TEMP. 80° TOWNSHIP BENTON  
 \_\_\_\_\_ SECTION 22  
 \_\_\_\_\_ T 7 N R 14 E

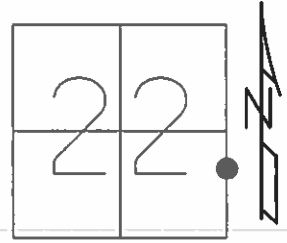
TYPE MONUMENT LG RR SPIKE

~~ON SURFACE~~ - BELOW 0.25'

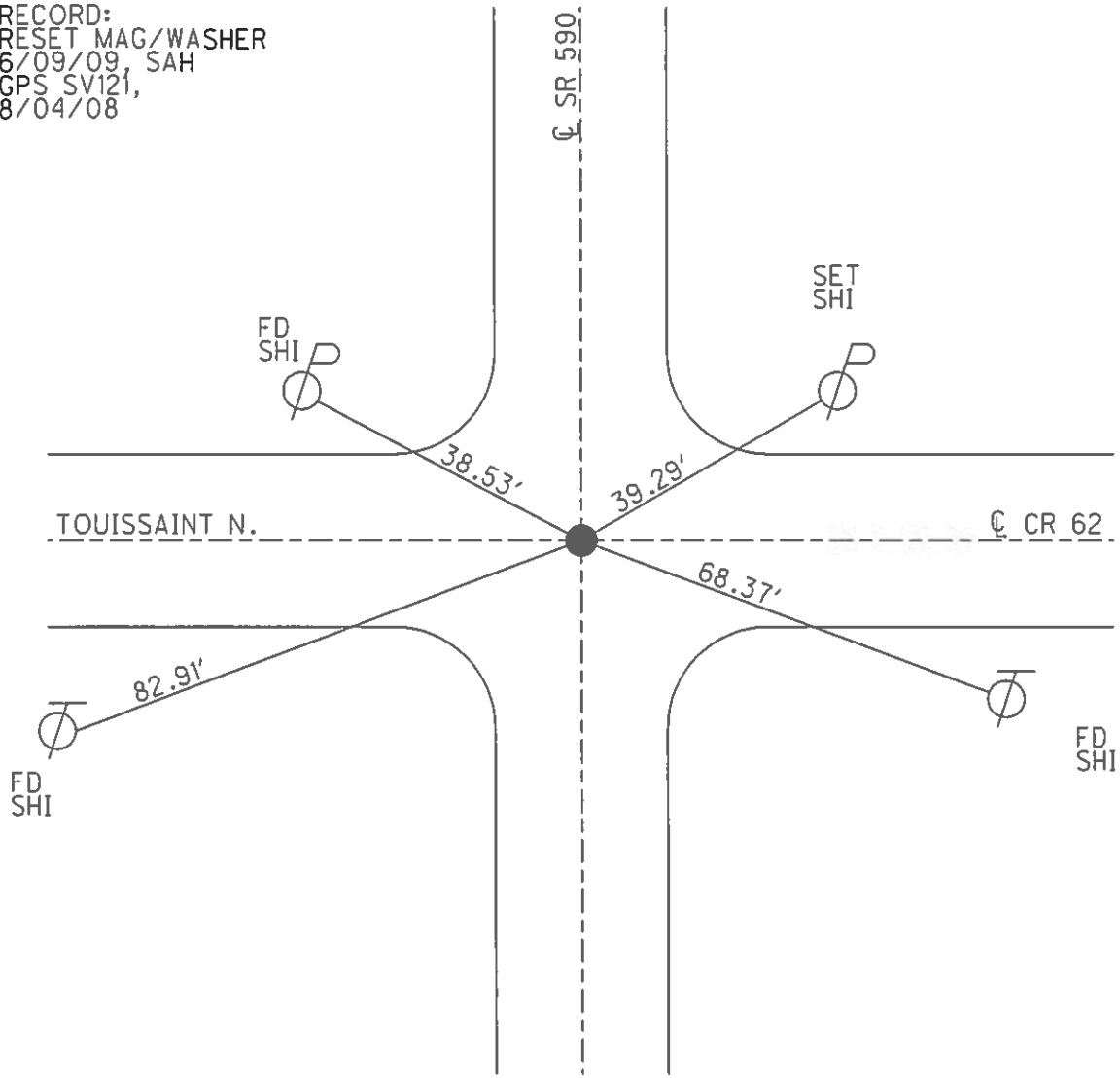
~~LEFT~~ - Q PAV'T - RIGHT 6.5' (ON Q EXTENDED OF TOUSSAINT RD.)  
 \_\_\_\_\_ TO \_\_\_\_\_ EDGE PAVEMENT

S.L.M. 341+54

GRID: NORTHING: 687531.726 EASTING: 1770823.362



RECORD:  
 RESET MAG/WASHER  
 6/09/09, SAH  
 GPS SV121,  
 8/04/08



**O.D.O.T. DISTRICT 2 SURVEY OFFICE** ( Use Only )

PERSONNEL \_\_\_\_\_

REFERENCE NO. 21A

SHEET \_\_\_\_\_ OF \_\_\_\_\_

NOTES CANTERBURY

DATE 07/09/08

ROUTE S.R. 590

H.C. HUSS

WEATHER Fair

COUNTY OTTAWA

R.C. CANTERBURY

TEMP. +80 F

TOWNSHIP BENTON

SECTION 22 & 23

T 7 N R 14 E

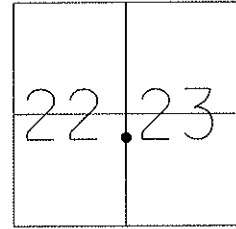
TYPE MONUMENT LG RR SPK

~~ON SURFACE~~ - BELOW 0.25' Down

~~LEFT~~ - C PAV'T - RIGHT 6.5' RT

TO EDGE PAVEMENT

S.L.M. 341+54

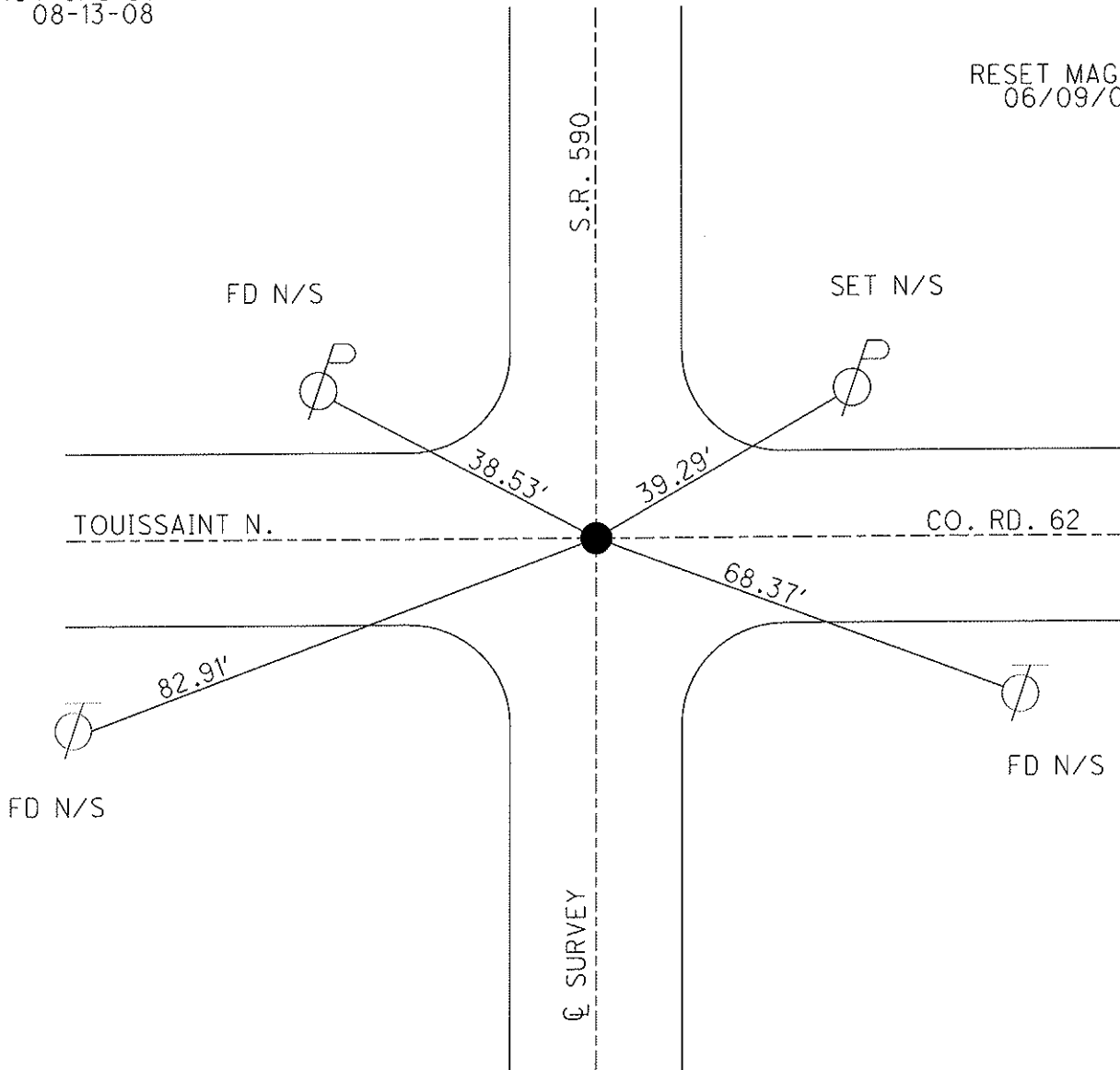


GRID: Northing: 687531.726 Easting: 1770823.362

SHOT GPS SV-121  
08-13-08

ON CL EXTENDED OF TOUSSAINT RD.

RESET MAG/WASHER  
06/09/09 SAH



O.D.O.T. DISTRICT 2 SURVEY OFFICE

PERSONNEL

REFERENCE NO. 21A SHEET 5 OF 1

NOTES RIPPLE

H.C. BARBOUR

DATE 8/06/90 DRAWN 8/08/90

R.C. Geyman

WEATHER cloudy

TEMP. 62°

ROUTE S.R. #590

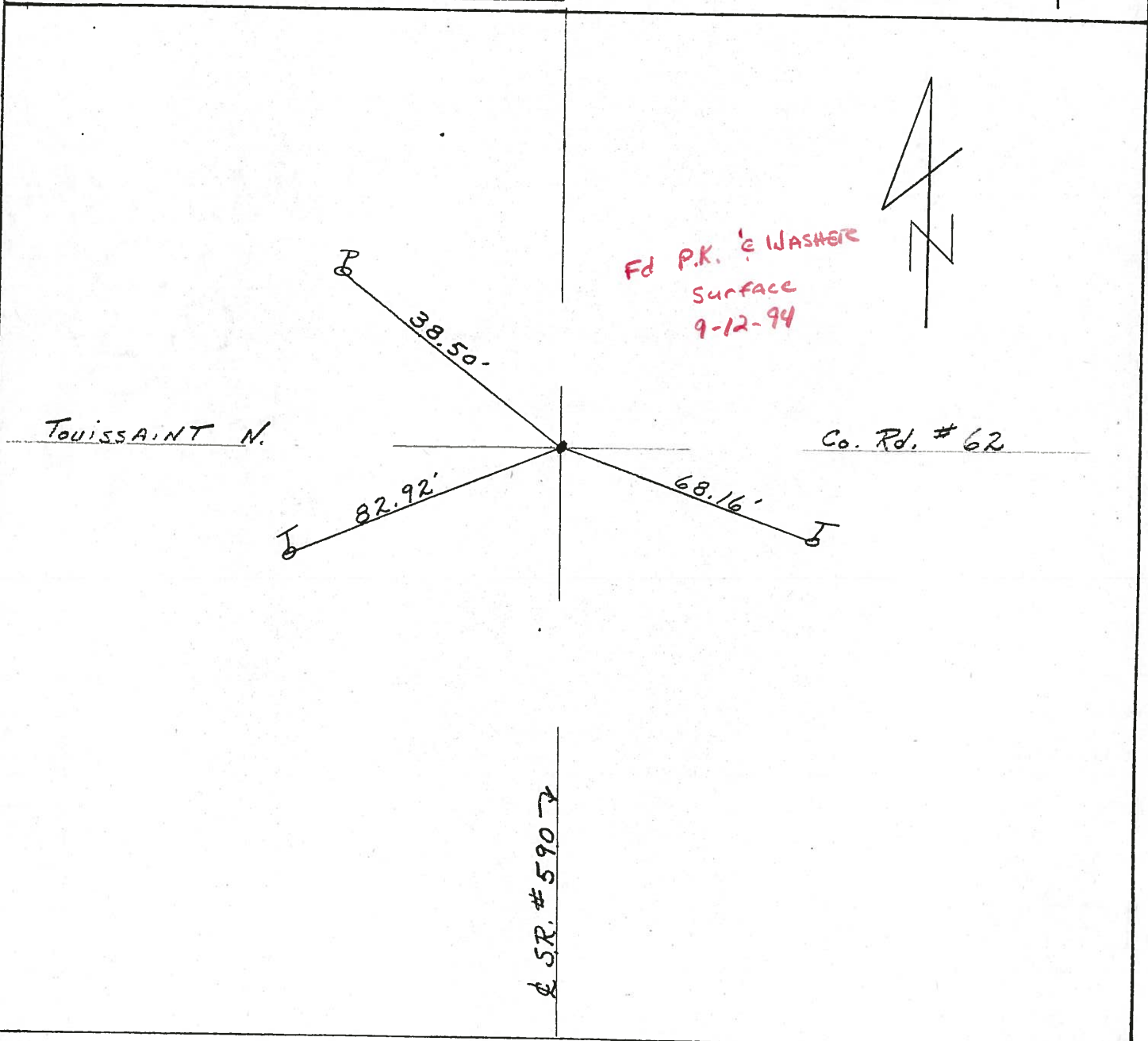
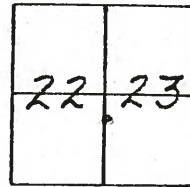
COUNTY OTTAWA

TOWNSHIP BENTON

SECTION 22 & 23

T 7 N R 14 E

TYPE MONUMENT Set P.K. Washer  
ON SURFACE - BELOW A Top RR Spike  
LEFT - CL PAV'T. - RIGHT 6.0' RT. CL PAV'T.  
\_\_\_\_ TO \_\_\_\_ EDGE PAVEMENT  
S.L.M. \_\_\_\_\_



O.D.O.T. DISTRICT 2 SURVEY OFFICE

PERSONNEL

REFERENCE NO. 21A

SHEET 5 OF 1

NOTES RIPPLE

H.C. BARBOUR

DATE 8/06/90 DRAWN 8/08/90

ROUTE SR. #590

R.C. Geyman

WEATHER cloudy

COUNTY OTTAWA

TEMP. 62°

TOWNSHIP BENTON

SECTION 22 & 23

T7 N R14 E

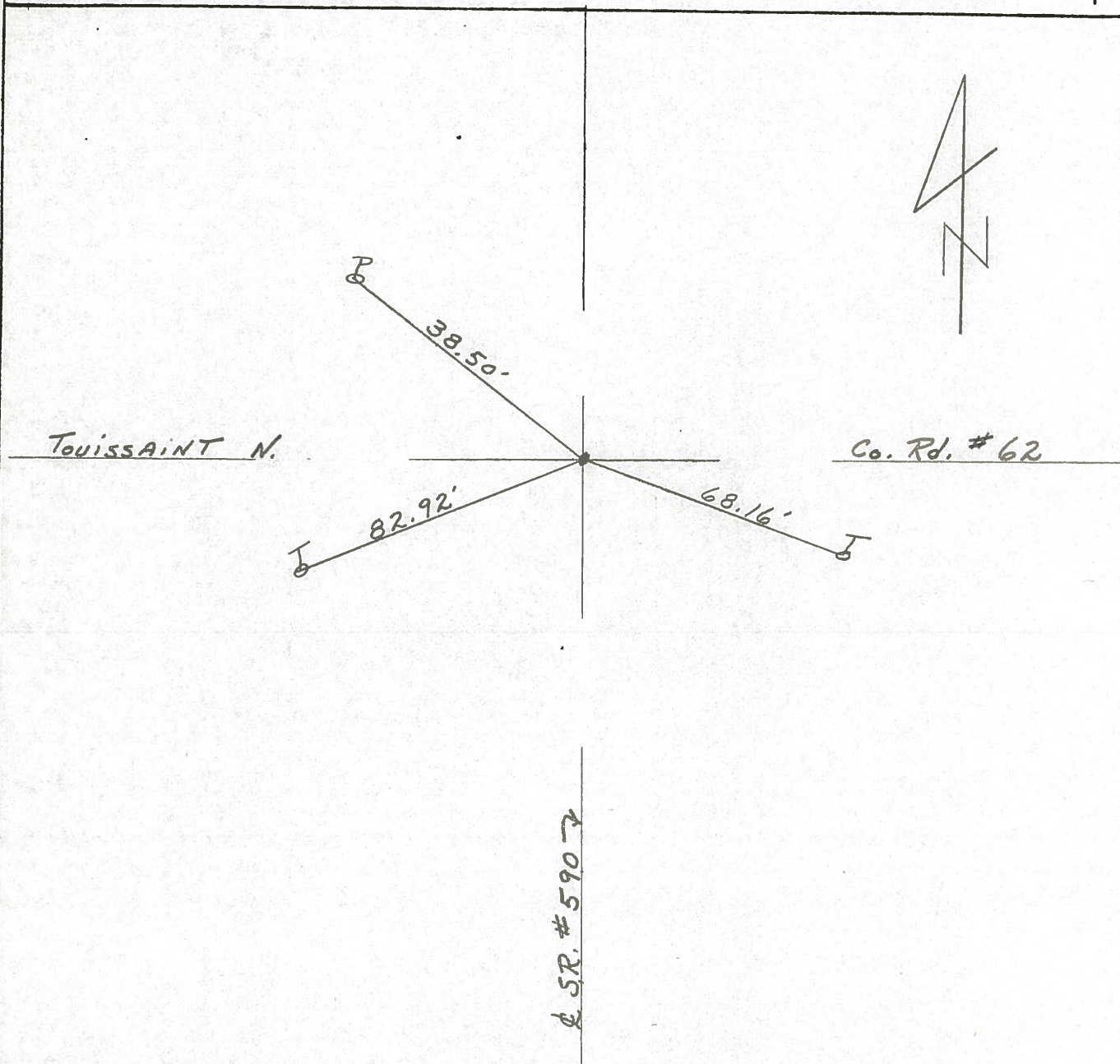
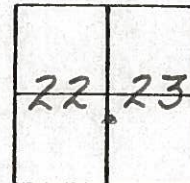
TYPE MONUMENT Set P.K. Washer

ON SURFACE - BELOW A Top RR Spike

LEFT- & PAV'T. - RIGHT 6.0' RT. & PVT.

TO EDGE PAVEMENT

S.L.M. \_\_\_\_\_



O.D.O.T. DISTRICT 2 SURVEY OFFICE

SHEET

OF

County Ottawa S.R. #590

Township Benton

Section 22 & 23

TZN, R1/E

Personnel Cronin-Draw

Ripple

Geyman

Mosser

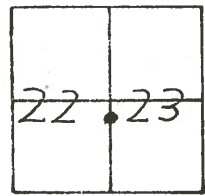
Barbour

#21-A

Date 7/19/82 Drawn 8/5/82

Weather sunny-humid

Temp. 85°



Set P.K. & Washer  
at top R.R. spike - 5.0'  
Rt. R. Pavement

