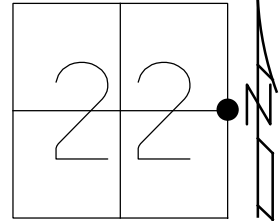


O.D.O.T. DISTRICT 2 SURVEY OFFICE (USE ONLY)

PERSONNEL \_\_\_\_\_ REFERENCE NO. 22 SHEET 23 OF 30  
 NOTES RHOADES DATE 2/26/18 ROUTE SR 590  
 H.C. O'DONNELL WEATHER SUNNY COUNTY OTTAWA  
 R.C. RHOADES TEMP. \_\_\_\_\_ TOWNSHIP BENTON  
 \_\_\_\_\_ SECTION 22  
 DWG BY MILLER PID 101240 T 7 N R 14 E

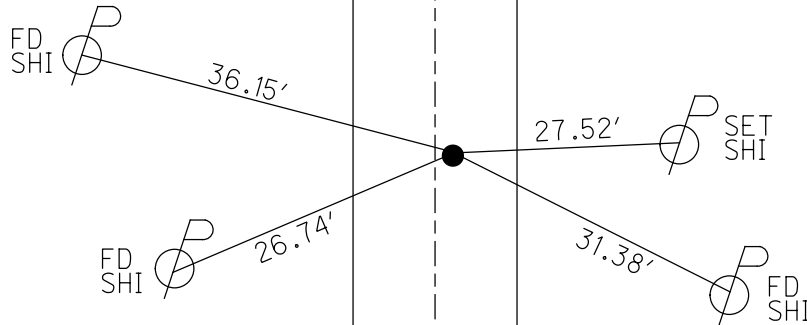
TYPE MONUMENT MAG/WASHER  
 ON SURFACE - ~~BELOW~~ ON  
 OFFSET  $\varnothing$  PAVEMENT 3.8' ~~LT~~ : RT  
6.5' TO RT EDGE PAVEMENT  
 STATION: 346+33



HORZ. DATUM: NAD83-2011 GEOID: NAVD88-2012A  
 GRID: NORTHING: 688007.054 EASTING: 1770829.573

RECORD:  
 FD P.K./WASHER  
 7/10/08  
 SV122,  
 8/13/08, MC  
 SET MAG/WASHER  
 6/09/09, SAH  
 FD MAG/WASHER  
 REF22  
 2-26-18, 4-23-18  
 10-4-18, JFO  
 FD MAG/WASHER  
 REF22  
 4/10/23, TDN

NOTE:  
 4.75 x 7.5" HIGH POINTED  
 SANDSTONE FD BY CO.  
 14.25" DOWN



CONC DR  
 RES #2493

O.D.O.T. DISTRICT 2 SURVEY OFFICE (USE ONLY)

PERSONNEL

REFERENCE NO. 22

SHEET 23 OF 30

NOTES RHOADES

DATE 2/26/18

ROUTE SR 590

H.C. O'DONNELL

WEATHER SUNNY

COUNTY OTTAWA

R.C. RHOADES

TEMP. \_\_\_\_\_

TOWNSHIP BENTON

DWG BY MILLER

PID 101240

SECTION 22

T 7 N R 14 E

TYPE MONUMENT MAG/WASHER

ON SURFACE - ~~BELOW~~ ON

OFFSET  $\varnothing$  PAVEMENT 3.8' ~~LT~~ : RT

6.5' TO RT EDGE PAVEMENT

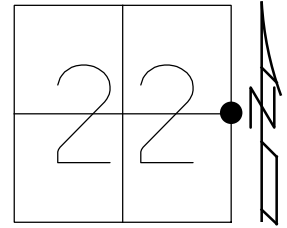
STATION: 346+33

HORZ.DATUM: NAD83-2011

GEOID: NAVD88-2012A

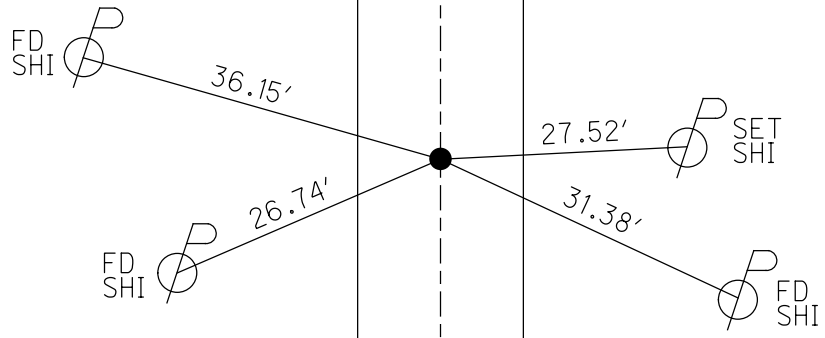
GRID: NORTHING: 688007.072

EASTING: 1770829.584



RECORD:  
 FD P.K./WASHER  
 7/10/08  
 SV122,  
 8/13/08, MC  
 SET MAG/WASHER  
 6/09/09, SAH  
 FD MAG/WASHER  
 REF 22  
 2-26-18, 4-23-18  
 10-4-18, JFO

NOTE:  
 4.75 x 7.5" HIGH POINTED  
 SANDSTONE FD BY CO.  
 14.25" DOWN

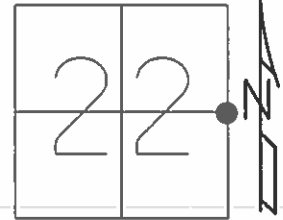


CONC DR  
 RES #2493

**O.D.O.T. DISTRICT 2 SURVEY OFFICE (USE ONLY)**

PERSONNEL \_\_\_\_\_ REFERENCE NO. 22 SHEET 23 OF 30  
 NOTES CANTERBURY DATE 7/10/08 ROUTE SR 590  
 H.C. HUSS WEATHER FAIR COUNTY OTTAWA  
 R.C. CANTERBURY TEMP. 78° TOWNSHIP BENTON  
 \_\_\_\_\_ SECTION 22  
 \_\_\_\_\_ T 7 N R 14 E

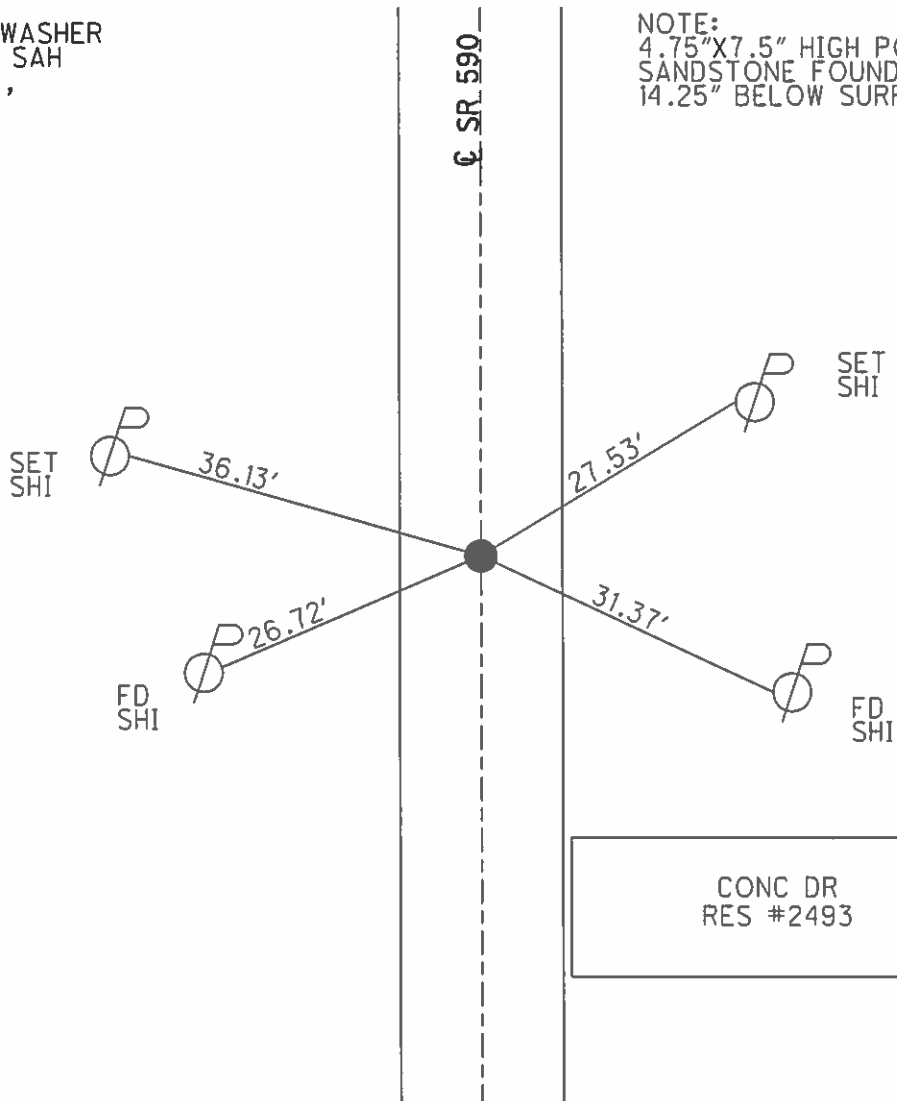
TYPE MONUMENT \_\_\_\_\_ P.K./WASHER \_\_\_\_\_  
 ON SURFACE - ~~BELOW~~ \_\_\_\_\_ ON \_\_\_\_\_  
~~LEFT~~ - Q PAV'T - RIGHT 3.8'  
6.5' TO RT EDGE PAVEMENT  
 S.L.M. \_\_\_\_\_ 346+33 \_\_\_\_\_



GRID: NORTHING: \_\_\_\_\_ EASTING: \_\_\_\_\_

RECORD:  
 SET MAG/WASHER  
 6/09/09, SAH  
 GPS SV122,  
 8/13/08

NOTE:  
 4.75"X7.5" HIGH POINTED  
 SANDSTONE FOUND BY COUNTY  
 14.25" BELOW SURF



O.D.O.T. DISTRICT 2 SURVEY OFFICE ( Use Only )

PERSONNEL \_\_\_\_\_

REFERENCE NO. 22

SHEET \_\_\_\_\_ OF \_\_\_\_\_

NOTES CANTERBURY

DATE 7-10-08

ROUTE S.R. 590

H.C. HUSS

WEATHER FAIR

COUNTY OTTAWA

R.C. CANTERBURY

TEMP. +78

TOWNSHIP BENTON

SECTION 22 & 23

T 7 N R 14 E

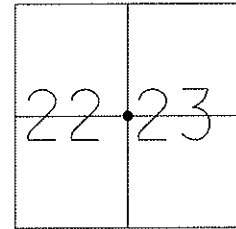
TYPE MONUMENT P.K./WASHER

ON SURFACE - ~~BELOW~~ SURFACE \_\_\_\_\_

~~LEFT~~ - C PAV'T - RIGHT 3.8' RT

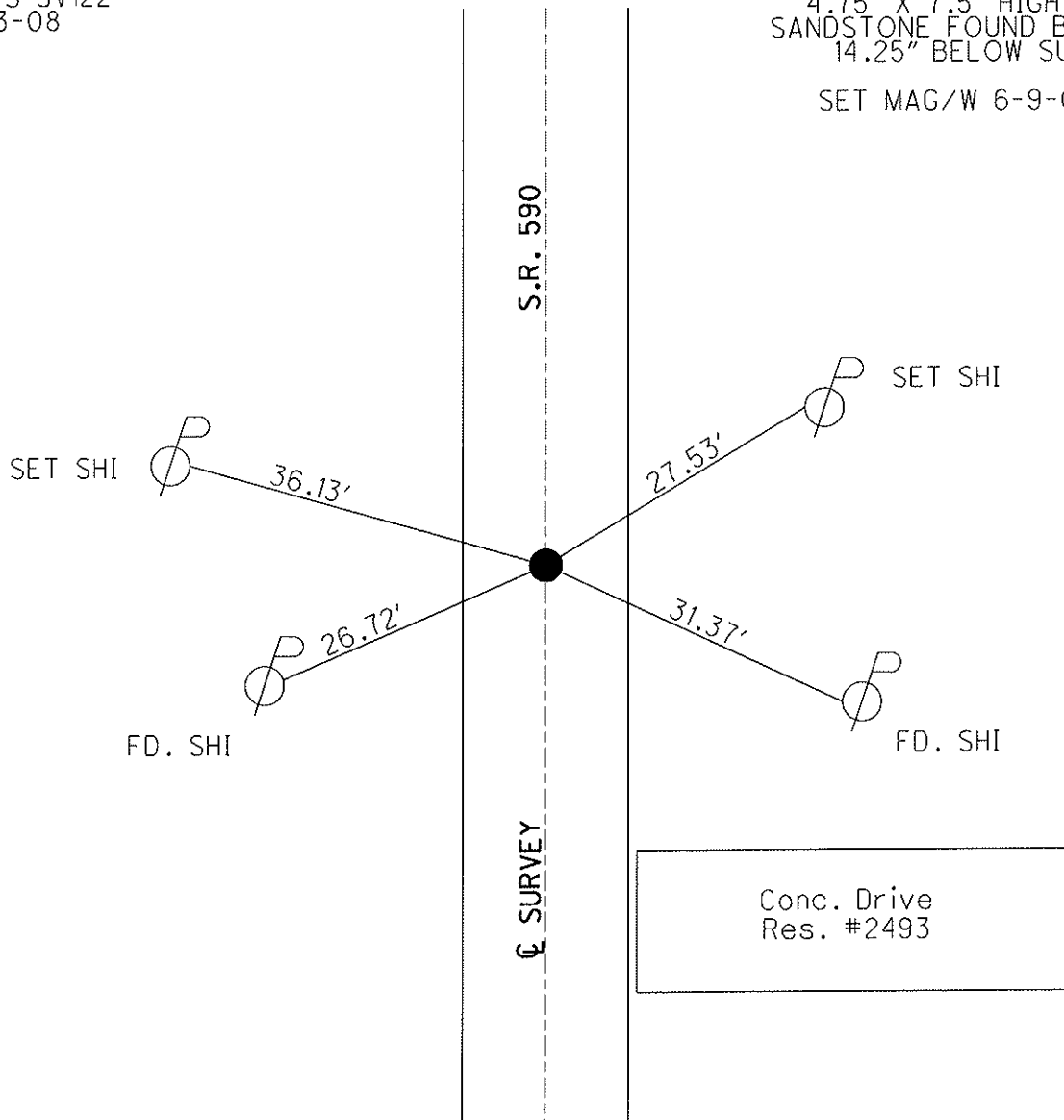
6.5' TO RT EDGE PAVEMENT

S.L.M. 346+33



SHOT GPS SV122  
08-13-08

RECORD:  
4.75" X 7.5" HIGH POINTED  
SANDSTONE FOUND BY COUNTY  
14.25" BELOW SURFACE  
SET MAG/W 6-9-09 SAH



# O.D.O.T. DISTRICT 2 SURVEY OFFICE

PERSONNEL

REFERENCE NO. 22 SHEET 6 OF 1

NOTES Ripple

H.C. BARBOUR

R.C. GeyMAN

DATE 8/06/90 DRAWN 8/08/90

WEATHER Cloudy

TEMP. 62°

ROUTE SR#590

COUNTY OTTAWA

TOWNSHIP BENTON

SECTION E 1/4 Post #22 W. 1/4 Post #23

T     R    

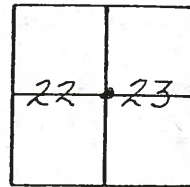
TYPE MONUMENT Set P.K. & Washer

ON SURFACE - BELOW SANDSTONE

LEFT - CL PAV'T. - RIGHT 3.5' ± RT. & PVT.

    TO     EDGE PAVEMENT

S.L.M.    



FD PK & WASHER  
SURFACE  
9-12-94



4 3/4" x 7 1/2" high pointed  
SANDSTONE found by County  
14 1/4" below surface

SR. 590

# O.D.O.T. DISTRICT 2 SURVEY OFFICE

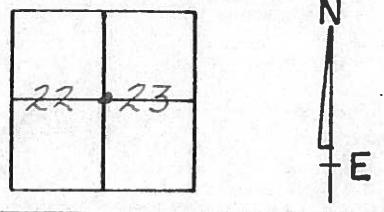
PERSONNEL \_\_\_\_\_ REFERENCE NO. 22 SHEET 6 OF 1

NOTES Ripple  
 H.C. BARBOUR  
 R.C. GEYMAN

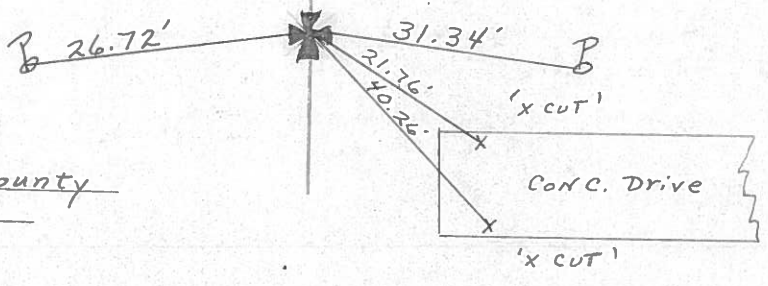
DATE 8/06/90 DRAWN 8/08/90  
 WEATHER Cloudy  
 TEMP. 62°

ROUTE SR#590  
 COUNTY OTTAWA  
 TOWNSHIP BENTON  
 SECTION E 1/4 Post #22 W. 1/4 Post #23  
 T \_\_\_\_\_ R \_\_\_\_\_

TYPE MONUMENT Set P.K. & washer  
 ON SURFACE - BELOW SANDSTONE  
 LEFT- & PAV'T. - RIGHT 3.5' ± RT. & PVT.  
 TO \_\_\_\_\_ EDGE PAVEMENT  
 S.L.M. \_\_\_\_\_



4 3/4" x 7 1/2" high pointed  
SANDSTONE found by County  
1 1/4" below surface



SR. 5907

County Ottawa S.R. #590

Township Benton

Section E 1/4 Post #22 - W 1/4 Post #23

TZN, R14E

Personnel Cronin-Draw

Ripple

#22

Geyman

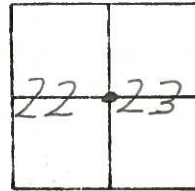
Mosser

Barbour

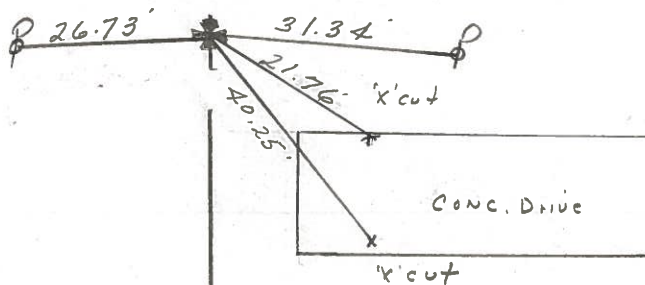
Date 7/19/82 Drawn 8/5/82

Weather sunny - humid

Temp. 85°



3 3/4" x 7 1/2" x 8 1/4" high pointed  
sandstone found by County  
14 7/8" below surface - set  
P.K. Washer at top - 3.0'  
Rt. & Pavement

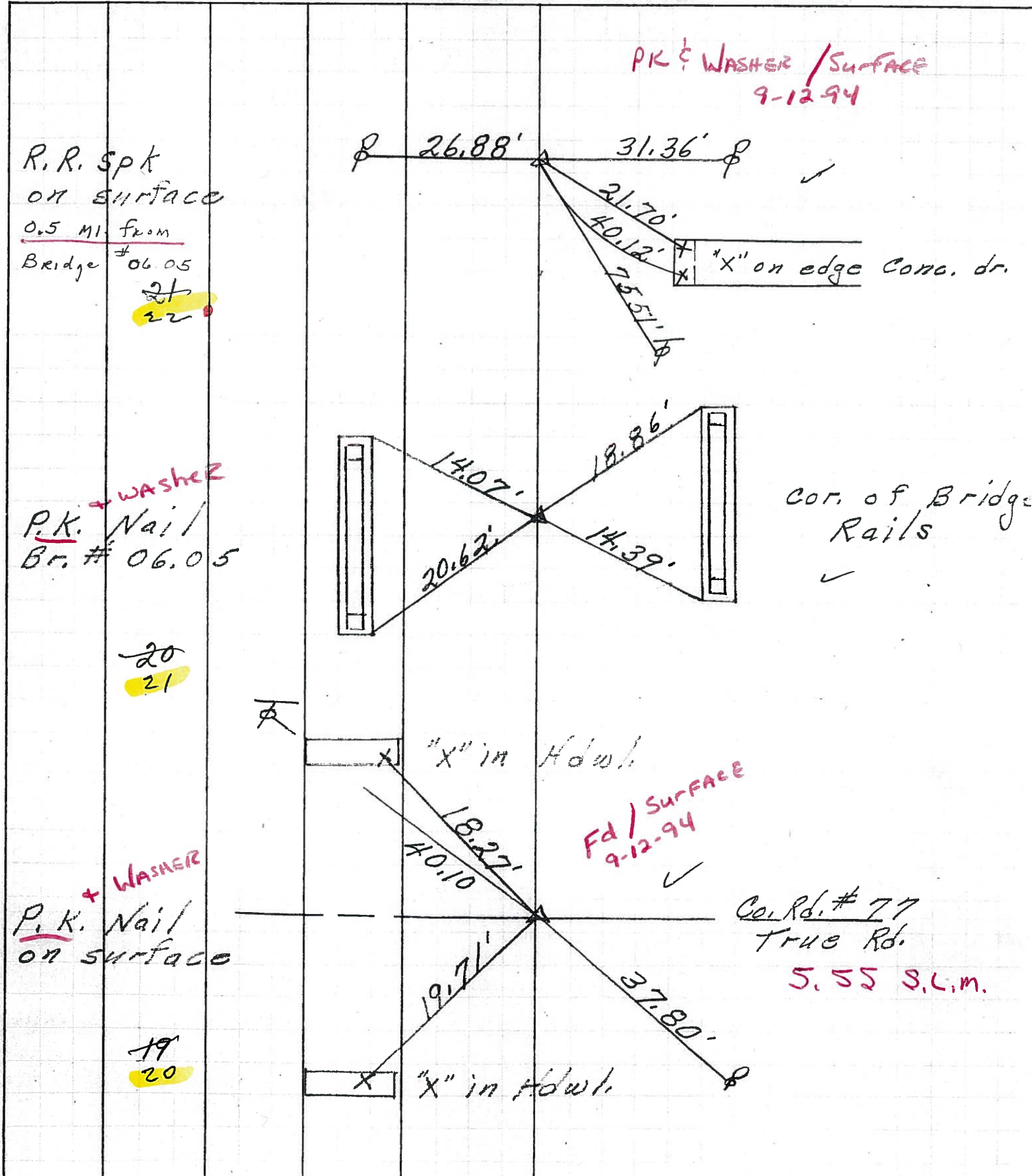


S.R. #590

PERSONNEL	TITLE	PERSONNEL	TITLE

COUNTY Ottawa DATE 7-27-71  
 S. R. 590 WEATHER Cloudy  
 SEC. 27 & 26 TEMP. 75°

DESCRIPTION S.R. #1636 S.R. #2 Benton Twp. JOB NO. \_\_\_\_\_



R.R. Spk  
 ON SURFACE  
 0.5 MI. FROM  
 Bridge # 06.05  
 21  
 22

PK & WASHER / SURFACE  
 9-12-94

"X" on edge conc. dr.

PK. + WASHER  
 Nail  
 Br. # 06.05

COR. OF BRIDGE  
 RAILS

20  
 21

"X" in Hdwl.

Fd / SURFACE  
 9-12-94

PK. + WASHER  
 Nail  
 ON SURFACE

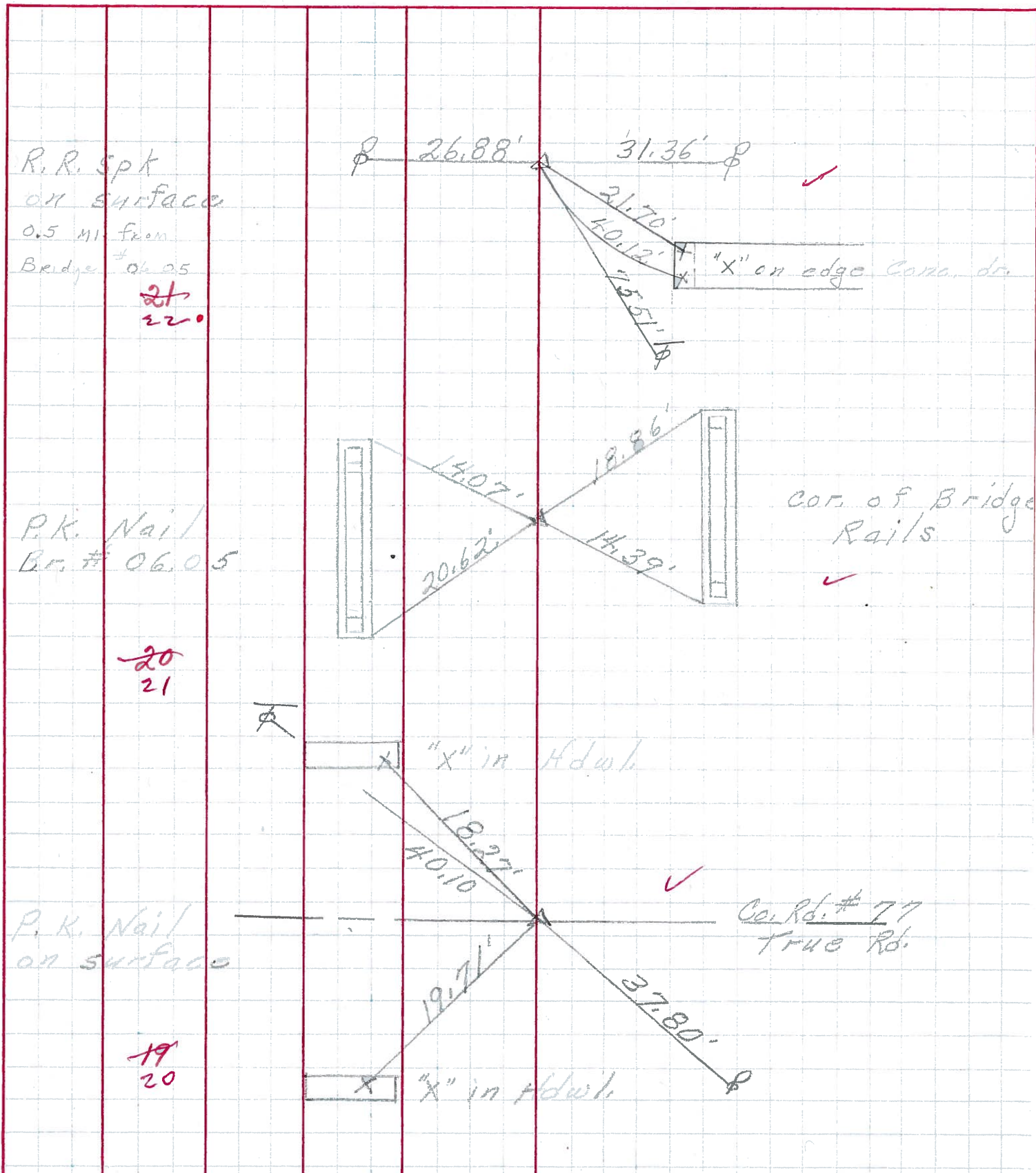
Co. Rd. # 77  
 True Rd.  
 5.55 S.L.M.

19  
 20

"X" in Hdwl.



PERSONNEL	TITLE	PERSONNEL	TITLE
_____	_____	_____	_____
COUNTY <u>Ottawa</u>		DATE <u>7-27-71</u>	
S. R. <u>590</u>		WEATHER <u>Cloudy</u>	
SEC. <u>27 &amp; 26</u>		TEMP. <u>75°</u>	
DESCRIPTION <u>S.R. #163 &amp; S.R. #2 Benton Twp.</u> JOB NO. _____			



PERSONNEL TITLE PERSONNEL TITLE  
 Schneider \_\_\_\_\_  
 Mosser \_\_\_\_\_  
 Barbour \_\_\_\_\_

COUNTY Ottawa DATE 6-21-68

S. R. 590 WEATHER Cloudy-Windy

SEC. S.R. #163 to S.R. #2 TEMP. 75°

DESCRIPTION Ties for Control Points JOB NO. \_\_\_\_\_

