

O.D.O.T. DISTRICT 2 SURVEY OFFICE (USE ONLY)

PERSONNEL

REFERENCE NO. 23

SHEET 24 OF 30

NOTES RHOADES DATE 2/26/18

ROUTE SR 590

H.C. O'DONNELL WEATHER SUNNY

COUNTY OTTAWA

R.C. RHOADES TEMP. 41°

TOWNSHIP BENTON

DWG BY MILLER PID 101240

SECTION 15

T 7 N R 14 E

TYPE MONUMENT MAG/WASHER

ON SURFACE - ~~BELOW~~ ON

OFFSET  $\text{\textcircled{C}}$  PAVEMENT 1.2' ~~LT~~ : RT

8.4' TO RT EDGE PAVEMENT

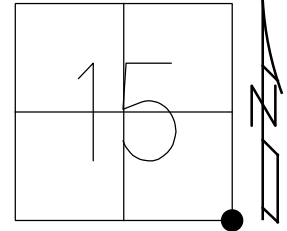
STATION: 373+00

HORIZ.DATUM: NAD83-2011

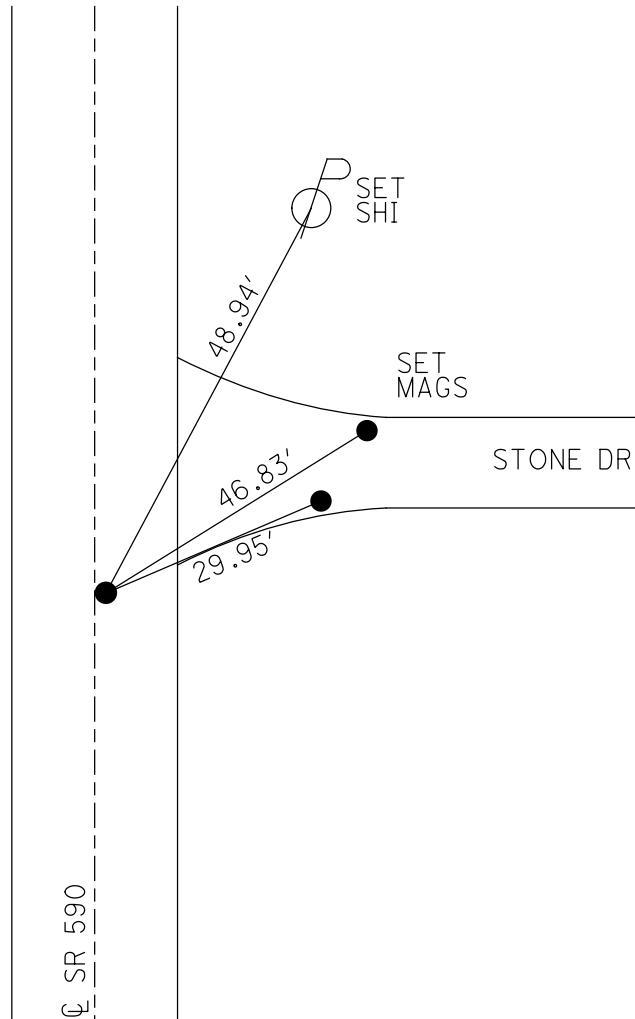
GEOID: NAVD88-2012A

GRID: NORTHING: 690665.411

EASTING: 177867.333



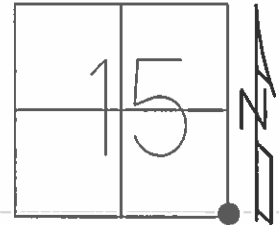
RECORD:  
FD MAG NAIL  
12/1/03  
FD P.K./WASHER  
7/10/08  
SV123  
8/13/08, MC  
SET MAG/WASHER  
6/09/09, SAH  
FD MAG/WASHER  
REF23  
2-26-18, 4-23-18  
10-4-18, JFO



**O.D.O.T. DISTRICT 2 SURVEY OFFICE (USE ONLY)**

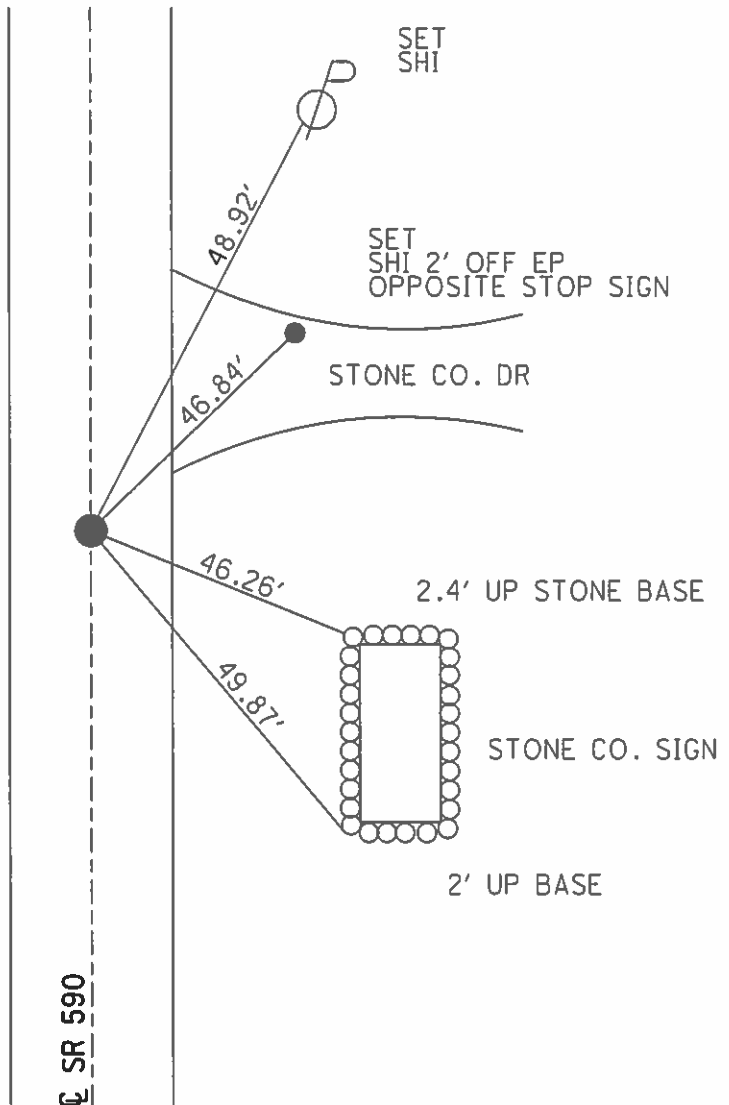
PERSONNEL \_\_\_\_\_ REFERENCE NO. 23 SHEET 24 OF 30  
 NOTES CANTERBURY DATE 7/10/08 ROUTE SR 590  
 H.C. HUSS WEATHER FAIR COUNTY OTTAWA  
 R.C. CANTERBURY TEMP. 78° TOWNSHIP BENTON  
 \_\_\_\_\_ SECTION 15  
 \_\_\_\_\_ T 7 N R 14 E

TYPE MONUMENT \_\_\_\_\_ P.K./WASHER \_\_\_\_\_  
 ON SURFACE - ~~BELOW~~ \_\_\_\_\_ ON \_\_\_\_\_  
~~LEFT~~ - CL PAV'T - RIGHT 1.2'  
8.4' TO RT EDGE PAVEMENT  
 S.L.M. 373+00



GRID: NORTHING: 690665.423 EASTING: 1770867.226

RECORD:  
 FD MAG  
 12/01/03  
 SET MAG/WASHER  
 6/09/09 SAH  
 SHOT GPS SV123  
 8/13/08



**O.D.O.T. DISTRICT 2 SURVEY OFFICE** ( Use Only )

PERSONNEL \_\_\_\_\_

REFERENCE NO. 23

SHEET \_\_\_\_\_ OF \_\_\_\_\_

NOTES CANTERBURY

DATE 7-10-08

ROUTE S.R. 590

H.C. HUSS

WEATHER FAIR

COUNTY OTTAWA

R.C. CANTERBURY

TEMP. +78

TOWNSHIP BENTON

SECTION 14 & 15

T 7 N R 14 E

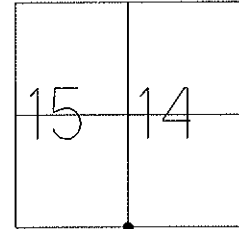
TYPE MONUMENT \_\_\_\_\_ P.K./WASHER \_\_\_\_\_

ON SURFACE - BELOW \_\_\_\_\_ SURFACE \_\_\_\_\_

LEFT - C PAV'T - RIGHT 1.2' RT

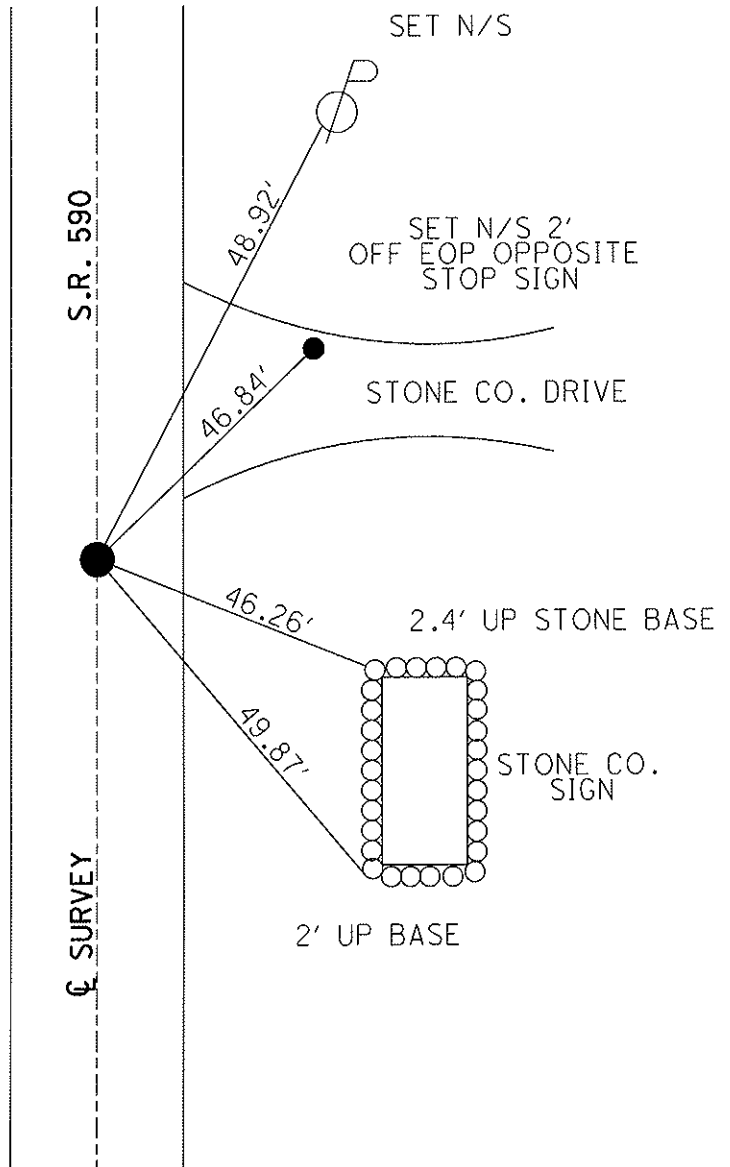
8.4' TO RT EDGE PAVEMENT

S.L.M. \_\_\_\_\_ 373+00 \_\_\_\_\_



GRID: Northing: 690665.423 Easting: 1770867.266

RECORD:  
FD MAG 12-1-03  
SET MAG/W 6-9-09 SAH  
SHOT GPS SV-123  
08-13-08



# O.D.O.T. DISTRICT 2 SURVEY OFFICE

PERSONNEL

REFERENCE NO. 23 SHEET 7 OF 1

NOTES RIPPLE

H.C. BARBOUR

R.C. GEYMAN

DATE 8/06/90 DRAWN 8/08/90

WEATHER cloudy

TEMP. 62°

ROUTE SR. #590

COUNTY OTTAWA

TOWNSHIP BENTON

SECTION 14 & 15

T 7 N R 14 E

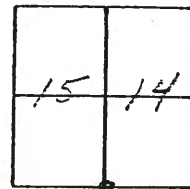
TYPE MONUMENT Set P. Kéwasher

ON SURFACE - BELOW P. Kéwasher & Top RR. spike

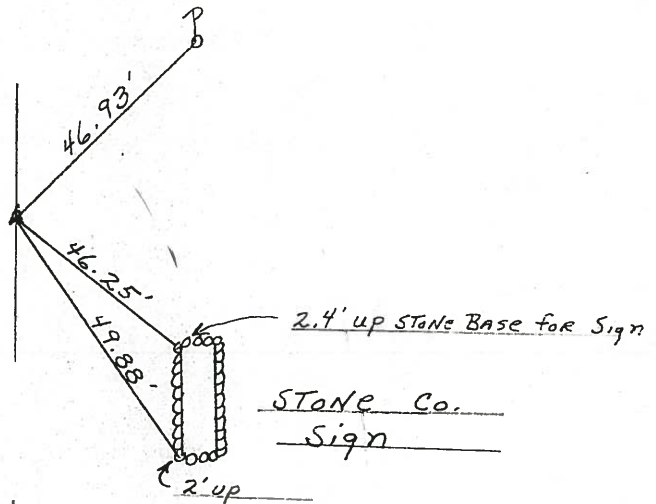
LEFT - ¢ PAV'T. - RIGHT 1.0' RT. & P.V.T.

TO EDGE PAVEMENT

S.L.M. \_\_\_\_\_



Ed PK Shank  
ON SURFACE  
9-12-94



d SR # 590 7

O.D.O.T. DISTRICT 2 SURVEY OFFICE

PERSONNEL

REFERENCE NO. 23

SHEET 7 OF 1

NOTES RIPPLE

H.C. BARBOUR

DATE 8/06/90 DRAWN 8/08/90

ROUTE SR. #590

R.C. GEYMAN

WEATHER Cloudy

COUNTY OTTAWA

TEMP. 62°

TOWNSHIP BENTON

SECTION 14 & 15

T 7 N R 14 E

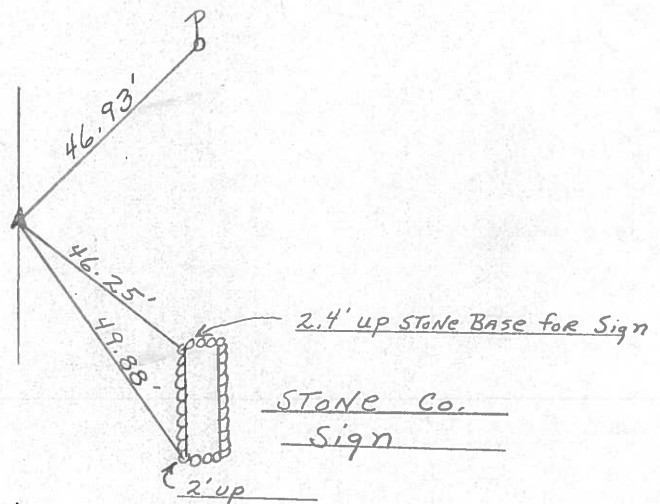
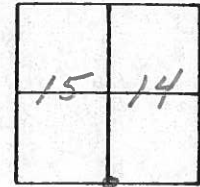
TYPE MONUMENT Set P.K. Washer

ON SURFACE - BELOW P.K. Washer AT Top RR. spike

LEFT - ☉ PAV'T. - RIGHT 1.0' RT. & P.V.T.

TO EDGE PAVEMENT

S.L.M. \_\_\_\_\_



SR. #590

County Ottawa S.R. #590

Township Benton

Section 14 E 15

TZN, R14E

Personnel Cronin - Draw

Ripple

Geyman

Mosser

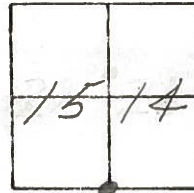
Barbour

#23

Date 7/19/82 Drawn 8/5/82

Weather sunny - humid

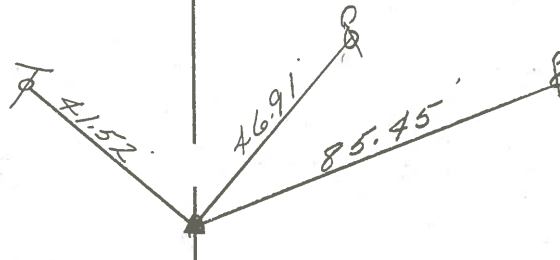
Temp. 85°



??



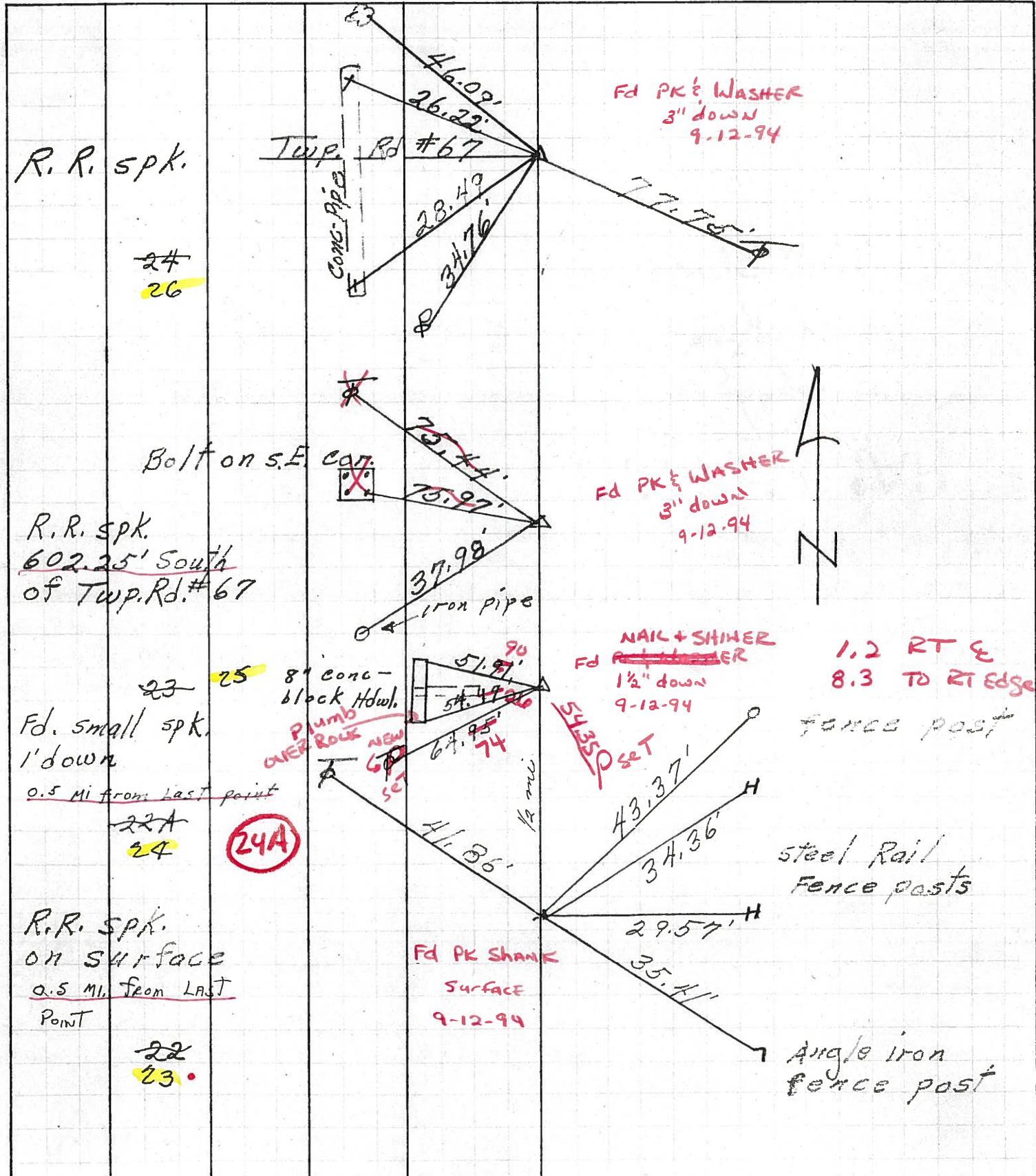
set P.K. washer atop  
boat spike atop R.L.  
spike 1.0' Rt. of P.V.I.



S.R. #590



PERSONNEL	TITLE	PERSONNEL	TITLE	COUNTY	DATE
				Ottawa	7-27-71
				S. R. 590	WEATHER Fair
				SEC. 15 & 14	TEMP. 75°
DESCRIPTION				S.R. #163 to S.R. #2	Benton Twp.



R.R. spk.

24  
26

Bolt on s.E. cor.

R.R. spk.  
602.25' South  
of Twp. Rd. #67

23 25

Fd. small spk.  
1' down  
0.5 Mi from Last point

22A  
24

24A

R.R. spk.  
on surface  
0.5 Mi. from LAST  
POINT

22  
23

Fd PK & WASHER  
3" down  
9-12-94

Fd PK & WASHER  
3" down  
9-12-94

NAIL + SHIMMER  
Fd PK & WASHER  
1 1/2" down  
9-12-94

1.2 RT &  
8.3 TO RT EDGE

fence post

steel Rail  
Fence posts

Fd PK SHANK  
SURFACE  
9-12-94

Angle iron  
fence post

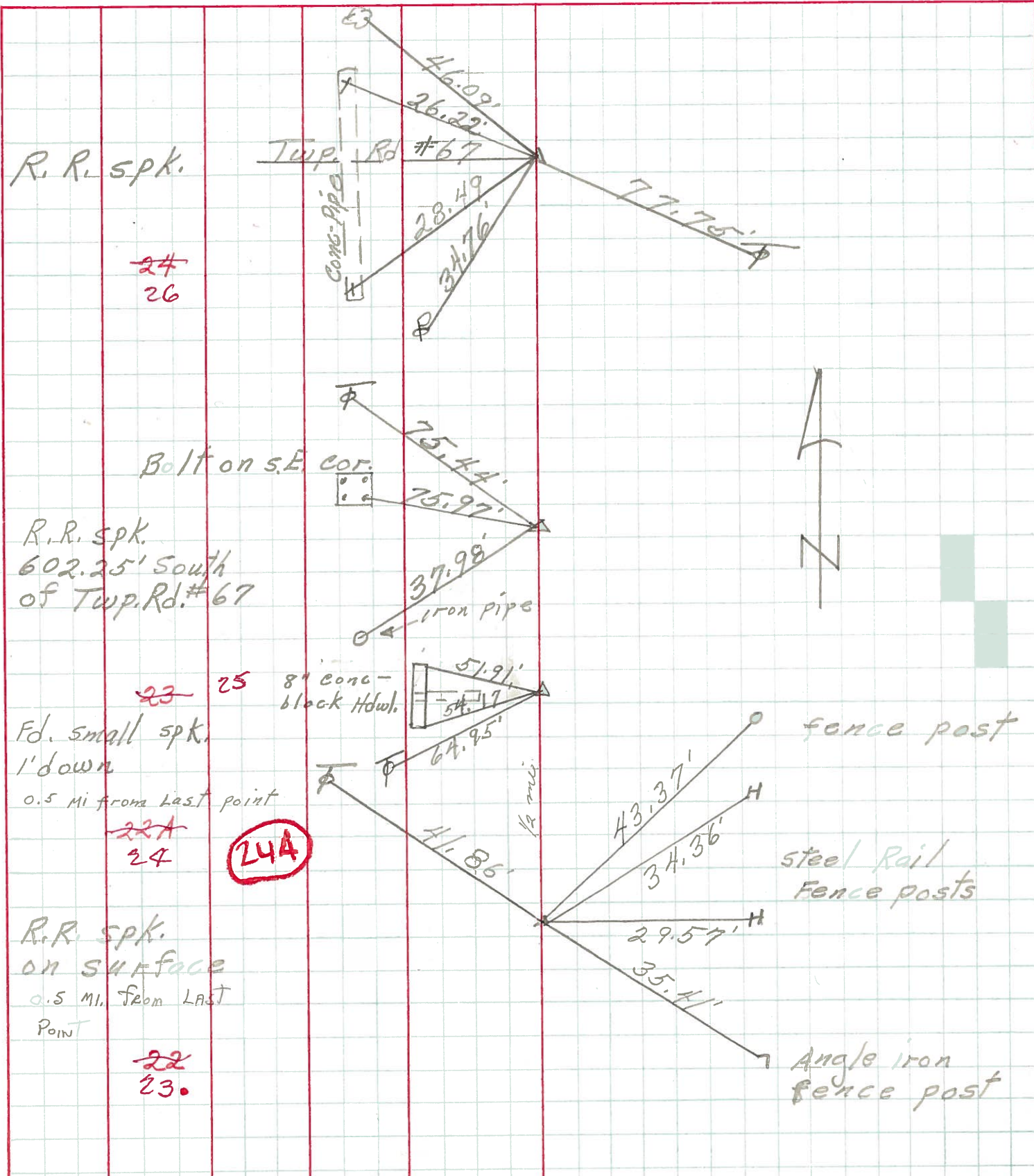
PERSONNEL TITLE PERSONNEL TITLE

COUNTY Ottawa DATE 7-27-71

S. R. 590 WEATHER Fair

SEC. 15 & 14 TEMP. 75°

DESCRIPTION S.R. #163 to S.R. #2 Benton Twp. JOB NO.



R.R. spk.

24  
26

R.R. spk.  
602.25' South  
of Twp. Rd. #67

Fd. small spk.  
1' down  
0.5 Mi from Last point

22A  
24

24A

R.R. spk.  
ON SURFACE  
0.5 Mi. from LAST  
POINT

22  
23.

fence post

steel Rail  
Fence posts

Angle iron  
fence post



PERSONNEL TITLE PERSONNEL TITLE

Schneider  
 Mosser  
 Barbour

COUNTY Ottawa DATE 6-21-68

S. R. 590 WEATHER Cloudy-Windy

SEC. S.R.#163 to S.R.#2 TEMP. 75°

DESCRIPTION Ties for Control Points JOB NO.

LEFT CENTER LINE RIGHT

