

O.D.O.T. DISTRICT 2 SURVEY OFFICE

PERSONNEL _____

REFERENCE NO. 23.A

SHEET 8 OF 1

NOTES Ripple

H.C. Barbour

R.C. Geyman

DATE 8/06/90 DRAWN 8/08/90

WEATHER cloudy

TEMP. 62°

ROUTE SR#590

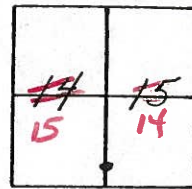
COUNTY OTTAWA

TOWNSHIP Benton

SECTION 14 & 15

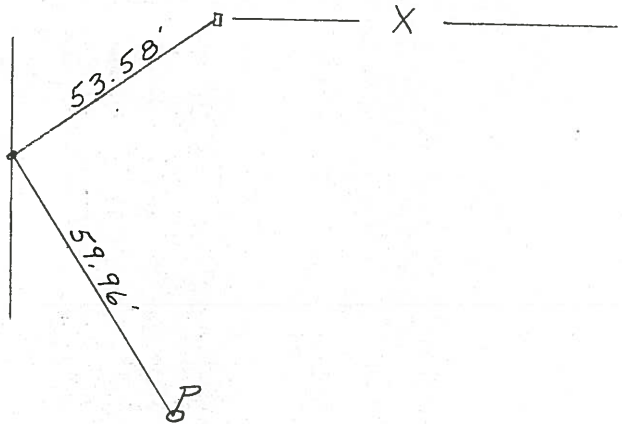
T7 N R 14 E

TYPE MONUMENT Set Pk. & Washer
 ON SURFACE - BELOW Bolt spike & washer
 LEFT - ¢ PAV'T. - RIGHT 1.0' LT. & PVT.
 TO _____ EDGE PAVEMENT
 S.L.M. _____



This Point only Good for R/W
bought for Bridge
Not on Sec. Line

See Sheet #7 1971 Ties
Not on CTR. of Section



d. SR#590

O.D.O.T. DISTRICT 2 SURVEY OFFICE

PERSONNEL _____

REFERENCE NO. 23.A

SHEET 8 OF 1

NOTES RIPPLE

H.C. BARBOUR

R.C. BEYMAN

DATE 8/06/90 DRAWN 8/08/90

WEATHER Cloudy

TEMP. 62°

ROUTE SR # 590

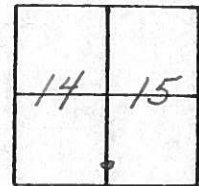
COUNTY OTTAWA

TOWNSHIP BENTON

SECTION 14 & 15

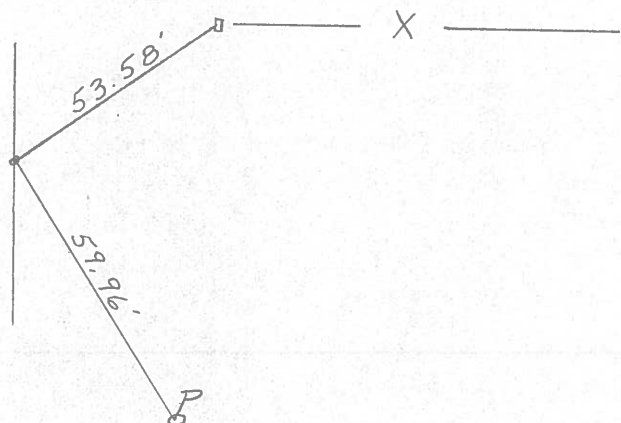
T 7 N R 14 E

TYPE MONUMENT Set P.K. & Washer
 ON SURFACE - BELOW Bolt Spike & Washer
 LEFT-6 PAV'T. - RIGHT 1.0' LT. & PVT.
 TO EDGE PAVEMENT
 S.L.M. _____



This Point only Good for R/W
bought for Bridge
Not on Sec. Line

See Sheet #7 1971 Ties
Not on CTR. of Section



SR # 590

County Ottawa S.R. #590

Township Benton

Section 14 & 15

T2N, R14E

Personnel Cronin - Draw

Ripple

Geyman

Mosser

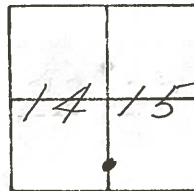
Barbour

#23-A

Date 7/19/82 Drawn 8/5/82

Weather sunny-humid

Temp. 85°



Set P.K. & washer atop
boat spike & washer
1.0' Lt. to Pavement

