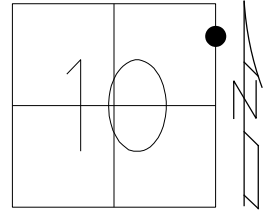


O.D.O.T. DISTRICT 2 SURVEY OFFICE (USE ONLY)

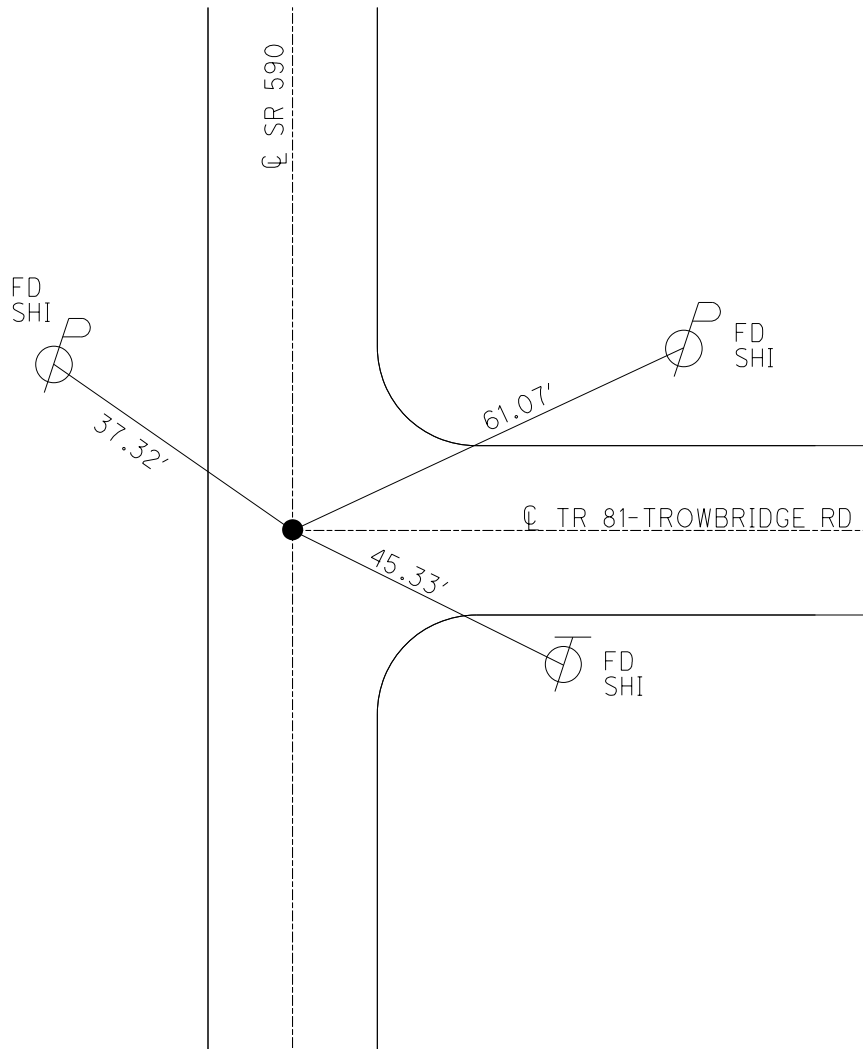
PERSONNEL \_\_\_\_\_ REFERENCE NO. 27 SHEET 29 OF 30  
 NOTES RHOADES DATE 12/29/23 ROUTE SR 590  
 H.C. MILLER WEATHER CLOUDY COUNTY OTTAWA  
 R.C. RHOADES TEMP. 40° TOWNSHIP BENTON  
 \_\_\_\_\_ SECTION 10  
 DWG BY RHOADES PID PAVETRAIN T 7 N R 14 E

TYPE MONUMENT MAG/WASHER  
 ON SURFACE - ~~BELOW~~ ON \_\_\_\_\_  
 OFFSET  $\bar{C}$  PAVEMENT 2.1'  $\pm$  : RT  
 \_\_\_\_\_ TO \_\_\_\_\_ EDGE PAVEMENT  
 STATION: 467+22



HORIZ. DATUM: NAD83 2011 GEOID: NAVD88 2018  
 GRID: NORTHING: 700047.800 EASTING: 1771004.200

RECORD:  
 P.K./WASHER  
 12/01/03, RGN  
 FD P.K./WASHER  
 7/10/08  
 SV127  
 8/13/08, MC  
 SET MAG/WASHER  
 6/10/09, SAH  
 FD MAG/WASHER  
 REF27  
 2-26-18, 4-23-18  
 10-4-18, JFO  
 12/29/23, JAM



O.D.O.T. DISTRICT 2 SURVEY OFFICE (USE ONLY)

PERSONNEL

REFERENCE NO. 27

SHEET 29 OF 30

NOTES RHOADES

DATE 2/26/18

ROUTE SR 590

H.C. O'DONNELL

WEATHER SUNNY

COUNTY OTTAWA

R.C. RHOADES

TEMP. 48°

TOWNSHIP BENTON

DWG BY MILLER PID 101240

SECTION 10

T 7 N R 14 E

TYPE MONUMENT MAG/WASHER

ON SURFACE - ~~BELOW~~ ON

OFFSET 2.1' LT : RT

- TO - EDGE PAVEMENT

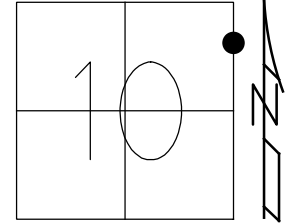
STATION: 467+22

HORIZ.DATUM: NAD83-2011

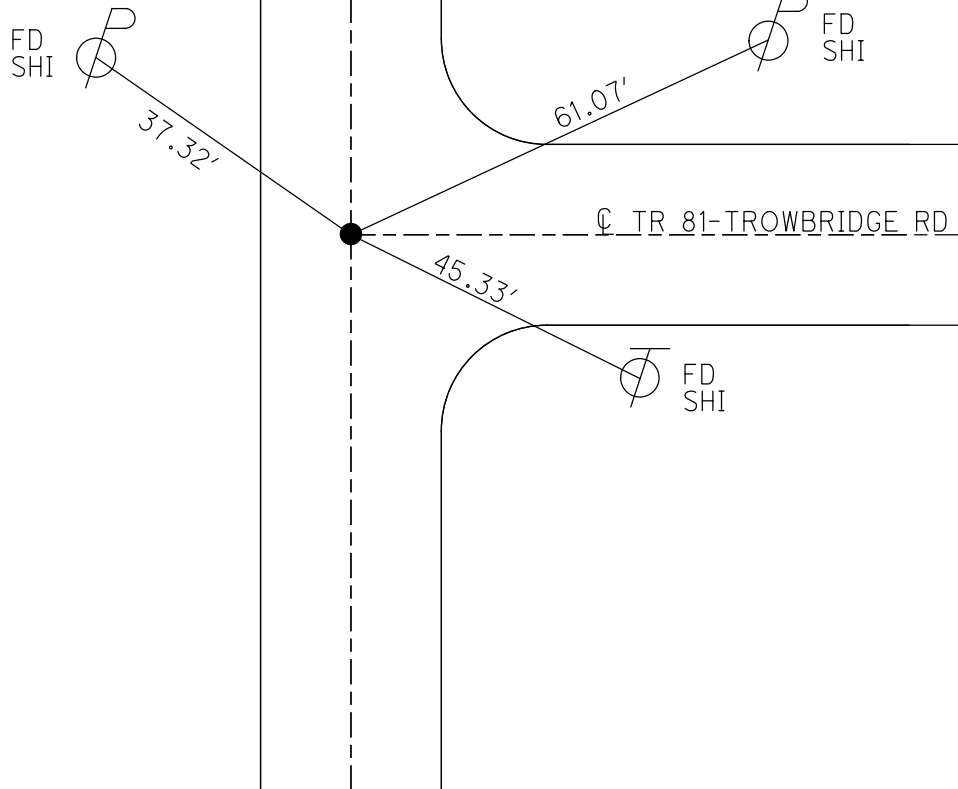
GEOID: NAVD88-2012A

GRID: NORTHING: 700047.800

EASTING: 1771004.200



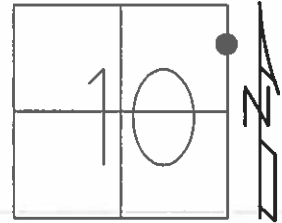
RECORD:  
P.K./WASHER  
12/01/03, RGN  
FD P.K./WASHER  
7/10/08  
SV127  
8/13/08, MC  
SET MAG/WASHER  
6/10/09, SAH  
FD MAG/WASHER  
REF27  
2-26-18, 4-23-18  
10-4-18, JFO



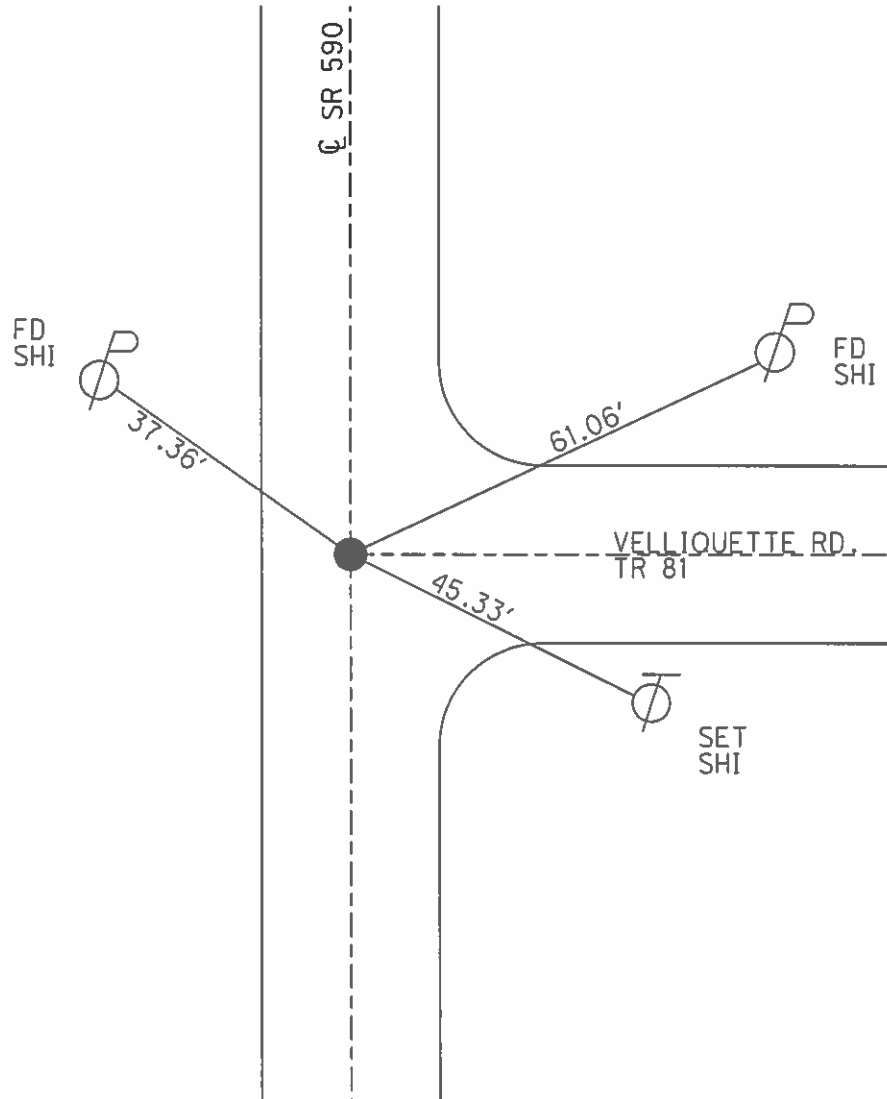
**O.D.O.T. DISTRICT 2 SURVEY OFFICE (USE ONLY)**

PERSONNEL \_\_\_\_\_ REFERENCE NO. 27 SHEET 29 OF 30  
 NOTES CANTERBURY DATE 7/10/08 ROUTE SR 590  
 H.C. HUSS WEATHER FAIR COUNTY OTTAWA  
 R.C. CANTERBURY TEMP. 78° TOWNSHIP BENTON  
 \_\_\_\_\_ SECTION 10  
 \_\_\_\_\_ T 7 N R 14 E

TYPE MONUMENT \_\_\_\_\_ P.K./WASHER \_\_\_\_\_  
 ON SURFACE - ~~BELOW~~ \_\_\_\_\_ ON \_\_\_\_\_  
~~LEFT~~ -  $\odot$  PAV'T - RIGHT 2.1' \_\_\_\_\_  
 \_\_\_\_\_ TO \_\_\_\_\_ EDGE PAVEMENT \_\_\_\_\_  
 S.L.M. \_\_\_\_\_ 467+22 \_\_\_\_\_  
 GRID: NORTHING: 700047.836 EASTING: 1771004.190



RECORD:  
 P.K./WASHER  
 12/01/03, RGN  
 SET MAG/WASHER  
 6/10/09, SAH  
 GPS SV127,  
 8/13/08



O.D.O.T. DISTRICT 2 SURVEY OFFICE

PERSONNEL

REFERENCE NO. 27

SHEET 10 OF 1

NOTES Ripple

H.C. BARBOUR

DATE 8/06/90 DRAWN 8/08/90

ROUTE SR#590

R.C. GEYMAN

WEATHER Cloudy

COUNTY OTTAWA

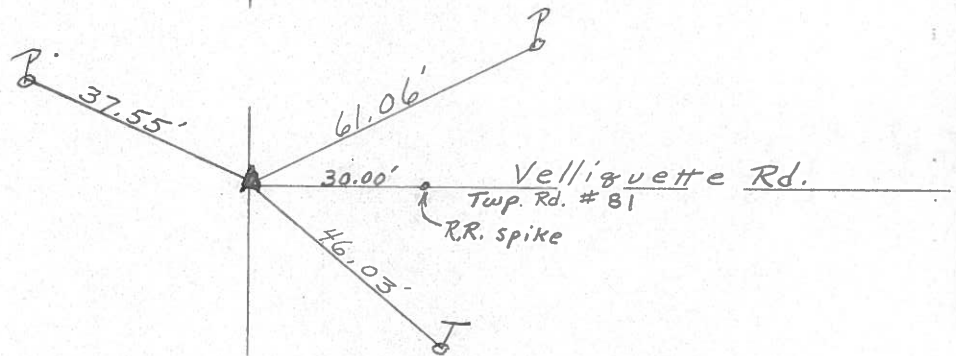
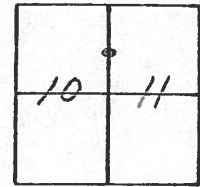
TEMP. 62°

TOWNSHIP BENTON

SECTION 10 & 11

T 7 N R 14 E

TYPE MONUMENT Set P.K. Washer  
ON SURFACE - BELOW A Top R.R. spike  
LEFT - to Pav't. - RIGHT 2' ± RT. of Pav't.  
TO EDGE PAVEMENT  
S.L.M. \_\_\_\_\_



SR # 590

County Ottawa S.R. #590

Township Benton

Section 10 E 11

T2N, R14E

Personnel Cronin - Draw

Ripple

Geyman

Mosser

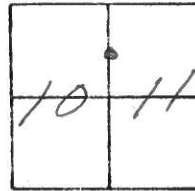
Barbour

#27

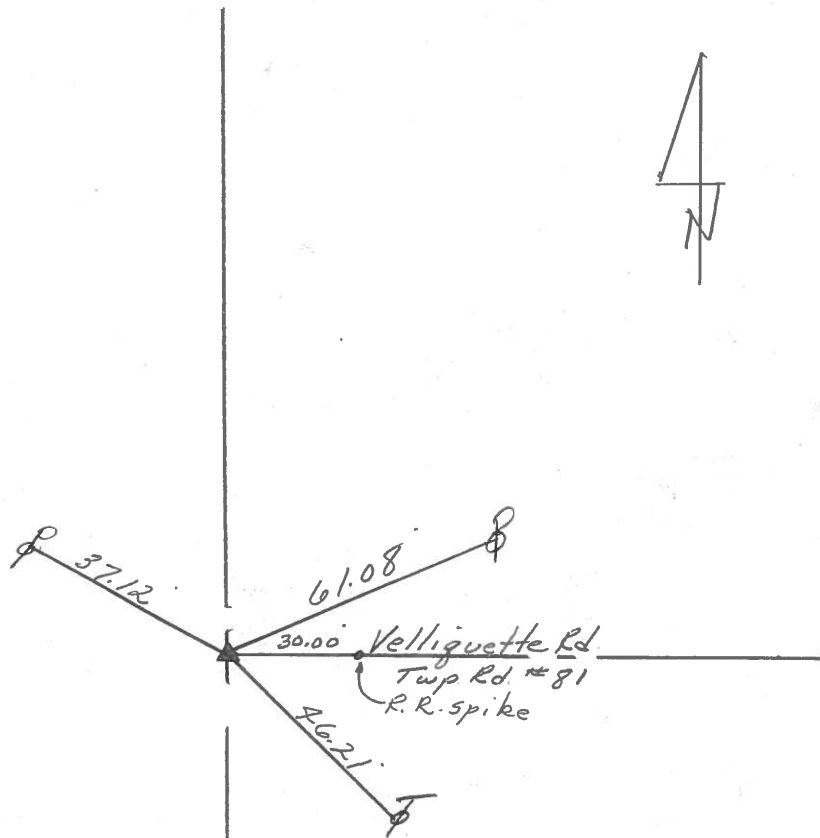
Date 7/19/82 Drawn 8/5/82

Weather sunny - humid

Temp. 85°



set P.K. washer atop  
R.R. spike 1.5 ft. ± P.V.T.



S.R. # 590

PERSONNEL TITLE PERSONNEL TITLE

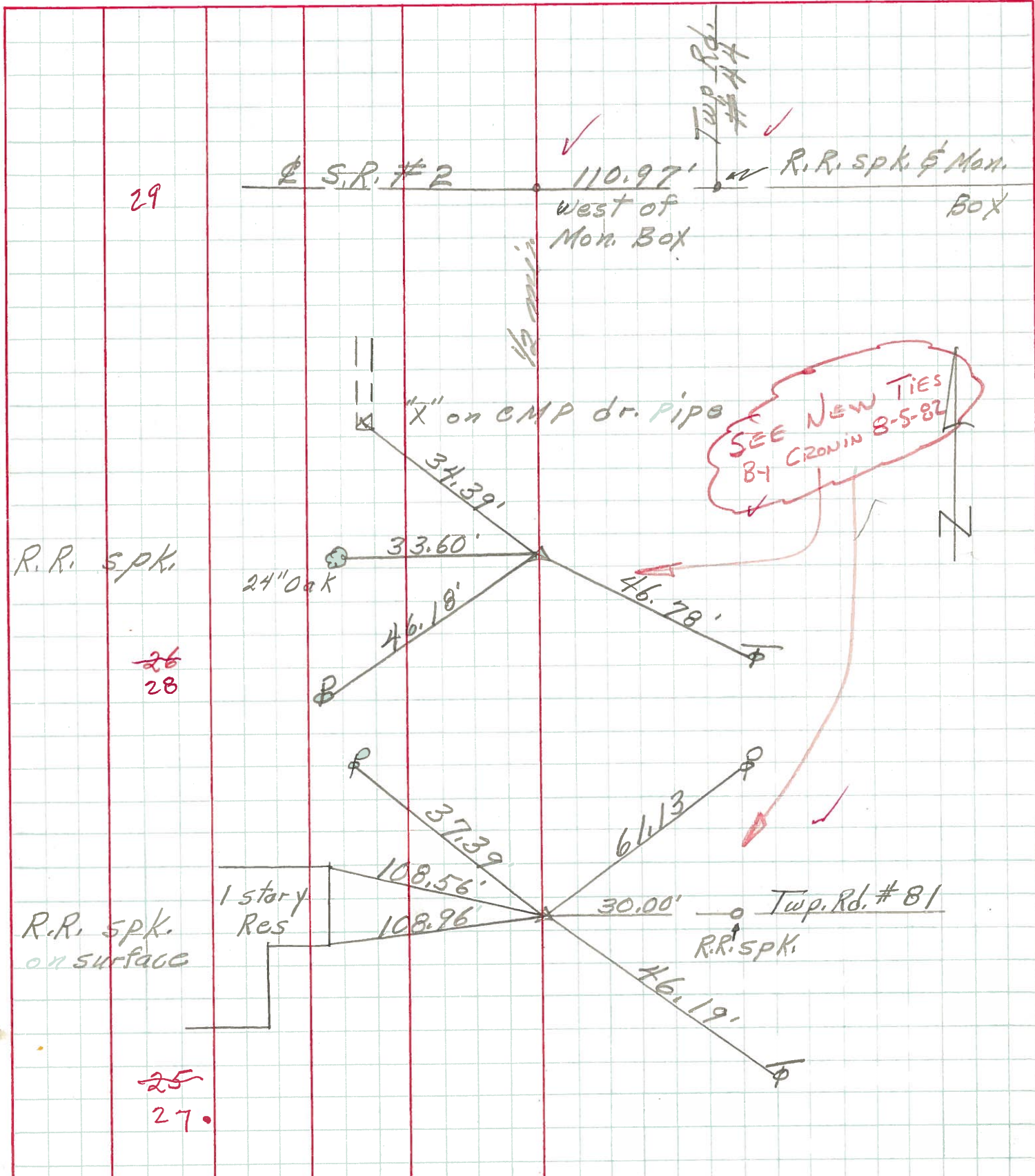
COUNTY Ottawa DATE 7-27-71

S. R. 590 WEATHER Fair

SEC. 10E11-3E2 TEMP. 75°

DESCRIPTION S.R. # 163 to S.R. # 2 Benton Twp. JOB NO. \_\_\_\_\_

LEFT CENTER LINE RIGHT



PERSONNEL TITLE PERSONNEL TITLE

Schneider

COUNTY Ottawa DATE 6-24-68

Barbour

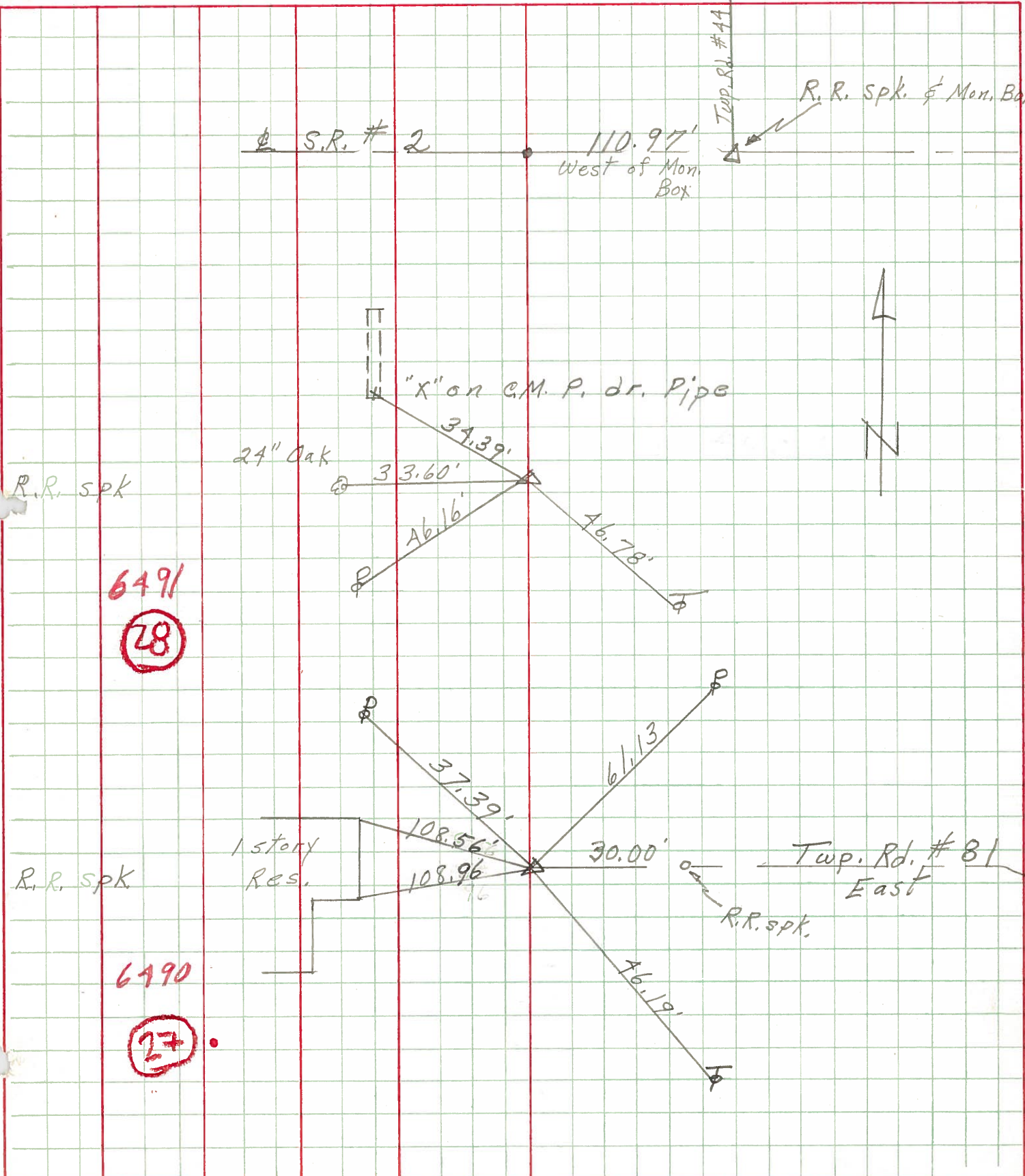
S. R. 590 WEATHER cloudy

Redding

SEC. S.R. #163 to S.R. #2 TEMP. 70°

DESCRIPTION Ties for Control Points JOB NO.

LEFT CENTER LINE RIGHT



6491  
28

6490  
27