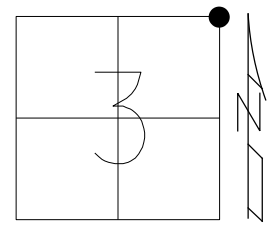


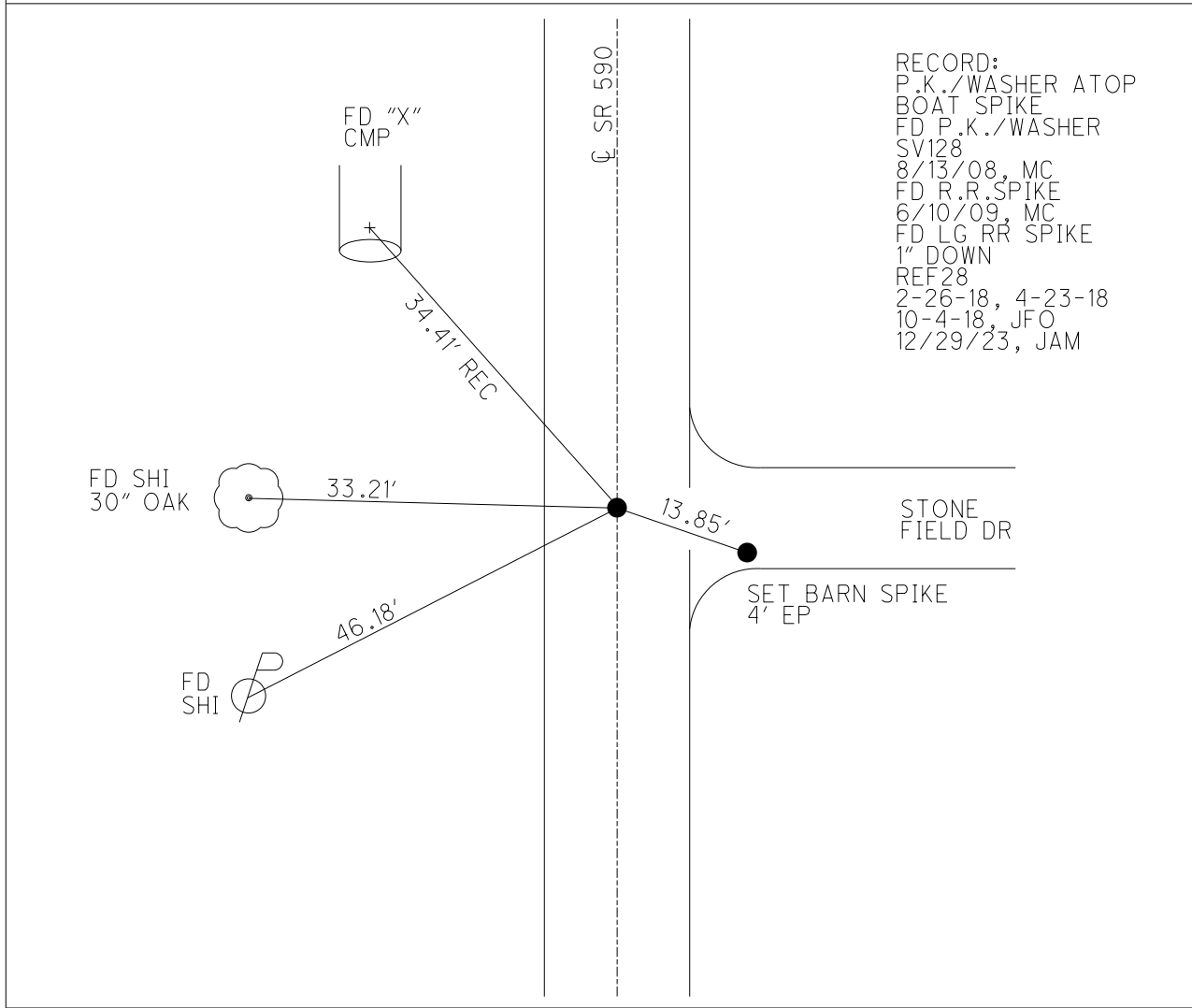
O.D.O.T. DISTRICT 2 SURVEY OFFICE (USE ONLY)

PERSONNEL _____ REFERENCE NO. 28 SHEET 30 OF 30
 NOTES RHOADES DATE 12/29/23 ROUTE SR 590
 H.C. MILLER WEATHER CLOUDY COUNTY OTTAWA
 R.C. RHOADES TEMP. 40° TOWNSHIP BENTON
 DWG BY RHOADES PID PAVETRAIN SECTION 3
 T 7 N R 14 E

TYPE MONUMENT LG.R.R.SPIKE
~~ON SURFACE~~ - BELOW 1"
 OFFSET \varnothing PAVEMENT ON LT : RT
- TO - EDGE PAVEMENT
 STATION: 506+30



HORZ.DATUM: NAD83 2011 GEOID: NAVD88 2018
 GRID: NORTHING: 703943.487 EASTING: 1771050.254

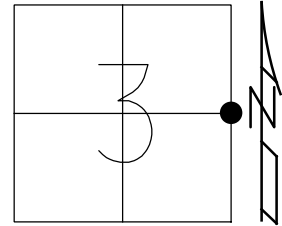


RECORD:
 P.K./WASHER ATOP
 BOAT SPIKE
 FD P.K./WASHER
 SV128
 8/13/08, MC
 FD R.R.SPIKE
 6/10/09, MC
 FD LG RR SPIKE
 1" DOWN
 REF28
 2-26-18, 4-23-18
 10-4-18, JFO
 12/29/23, JAM

O.D.O.T. DISTRICT 2 SURVEY OFFICE (USE ONLY)

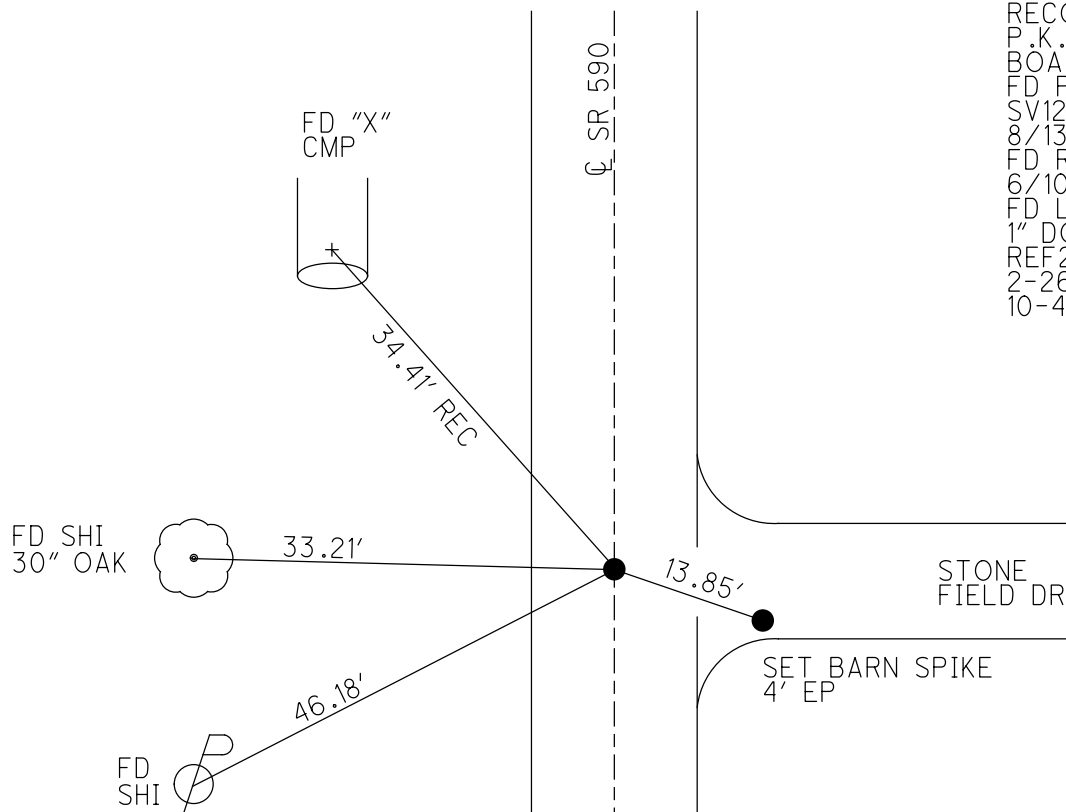
PERSONNEL _____ REFERENCE NO. 28 SHEET 30 OF 30
 NOTES RHOADES DATE 2/26/18 ROUTE SR 590
 H.C. O'DONNELL WEATHER SUNNY COUNTY OTTAWA
 R.C. RHOADES TEMP. 48° TOWNSHIP BENTON
 DWG BY MILLER PID 101240 SECTION 3
 T 7 N R 14 E

TYPE MONUMENT LG.R.R.SPIKE
 ON SURFACE - ~~BELOW~~ 1"
 OFFSET \odot PAVEMENT ON LT : RT
- TO - EDGE PAVEMENT
 STATION: 506+30



HORIZ.DATUM: NAD83-2011 GEOID: NAVD88-2012A
 GRID: NORTHING: 703943.487 EASTING: 1771050.254

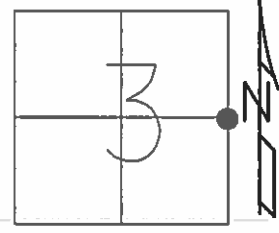
RECORD:
 P.K./WASHER ATOP
 BOAT SPIKE
 FD P.K./WASHER
 SV128
 8/13/08, MC
 FD R.R.SPIKE
 6/10/09, MC
 FD LG RR SPIKE
 1" DOWN
 REF28
 2-26-18, 4-23-18
 10-4-18, JFO



O.D.O.T. DISTRICT 2 SURVEY OFFICE (USE ONLY)

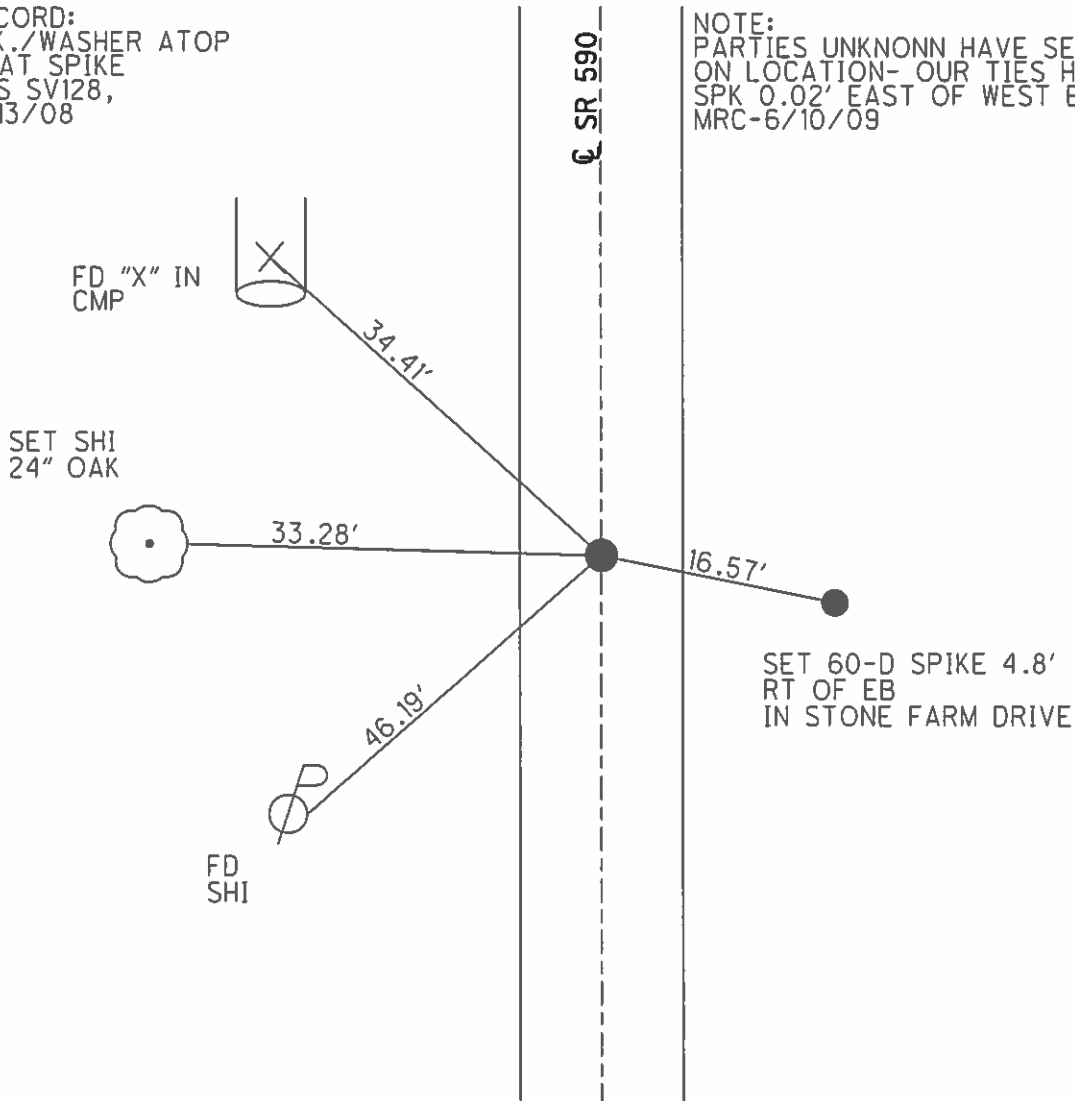
PERSONNEL _____ REFERENCE NO. 28 SHEET 30 OF 30
 NOTES HUSS DATE 08/13/08 ROUTE SR 590
 H.C. HUSS WEATHER FAIR COUNTY OTTAWA
 R.C. CANTERBURY TEMP. 80° TOWNSHIP BENTON
 _____ SECTION 3
 _____ T 7 N R 14 E

TYPE MONUMENT _____ P.K./WASHER _____
 ON SURFACE - ~~BELOW~~ _____ ON _____
~~LEFT~~ - ☉ PAV'T - ~~RIGHT~~ _____ ☉ _____
 _____ TO _____ EDGE PAVEMENT
 S.L.M. _____ 506+30
 GRID: NORTHING: 703943.546 EASTING: 1771050.203



RECORD:
 P.K./WASHER ATOP
 BOAT SPIKE
 GPS SV128,
 8/13/08

NOTE:
 PARTIES UNKNONN HAVE SET A RRS PK
 ON LOCATION- OUR TIES HIT ON
 SPK 0.02' EAST OF WEST EDGE OF SPK
 MRC-6/10/09



O.D.O.T. DISTRICT 2 SURVEY OFFICE

PERSONNEL

REFERENCE NO. 28

SHEET 11 OF 1

NOTES Ripple

H.C. BARBOUR

DATE 8/06/90 DRAWN 8/08/90

ROUTE SR.#590

R.C. GEYMAN

WEATHER Cloudy

COUNTY OTTAWA

TEMP. 62°

TOWNSHIP BENTON

SECTION 2 & 3

T 7 N R 14 E

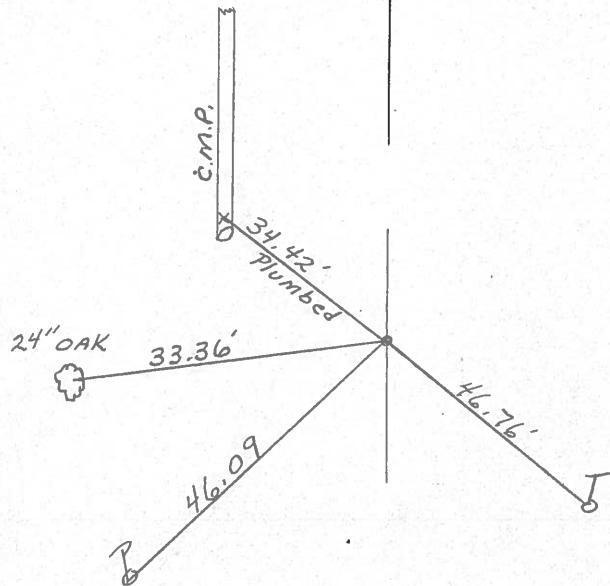
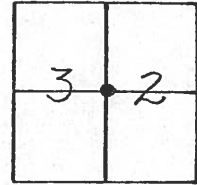
TYPE MONUMENT Set P.K. Washer

ON SURFACE - BELOW P.K. Washer A Top Boat spike

LEFT - PAV'T. - RIGHT P.V.T.

TO EDGE PAVEMENT

S.L.M. _____



SR.#590

O.D.O.T. DISTRICT 2 SURVEY OFFICE

SHEET

OF

County Ottawa S.R. # 590

Township Benton

Section 2 E 3

T7N, R14E

Personnel Cronin - Draw

Ripple

Geyman

Messer

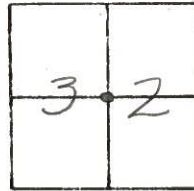
Barbour

#28

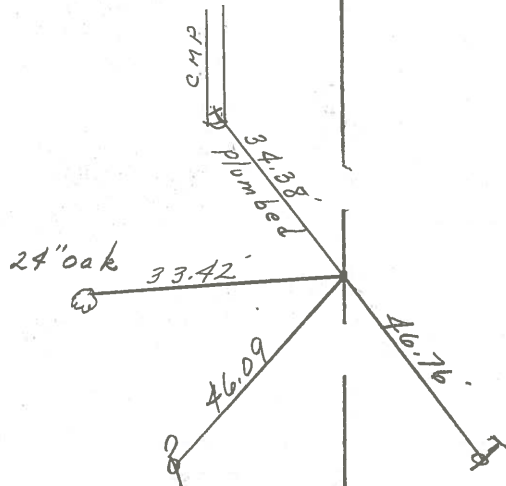
Date 7/19/82 - Drawn 8/5/82

Weather sunny - humid

Temp. 85°



set P.K. & washer at top
boat spike

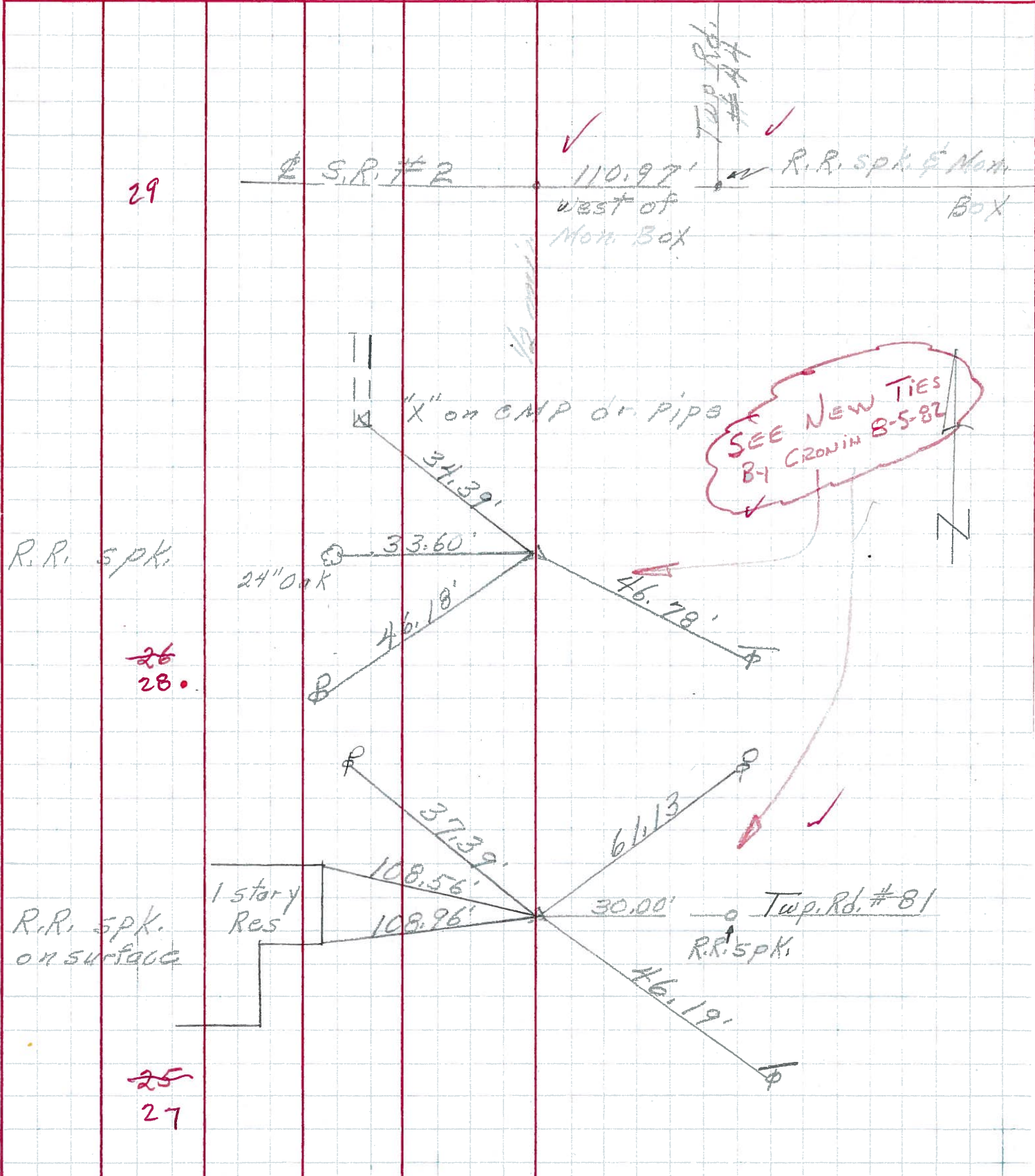


S.R. # 590

PERSONNEL	TITLE	PERSONNEL	TITLE

COUNTY Ottawa DATE 7-27-71
 S. R. 590 WEATHER Fair
 SEC. 10E11-362 TEMP. 75°

DESCRIPTION S.R. # 163 to S.R. # 2 Benton Twp. JOB NO. _____
 LEFT CENTER LINE RIGHT



29

26
28.

25
27

SEE NEW TIES
BY CROWN 8-5-82



PERSONNEL TITLE PERSONNEL TITLE

Schneider
Barbour
Redding

COUNTY Ottawa DATE 6-24-68

S. R. 590 WEATHER cloudy

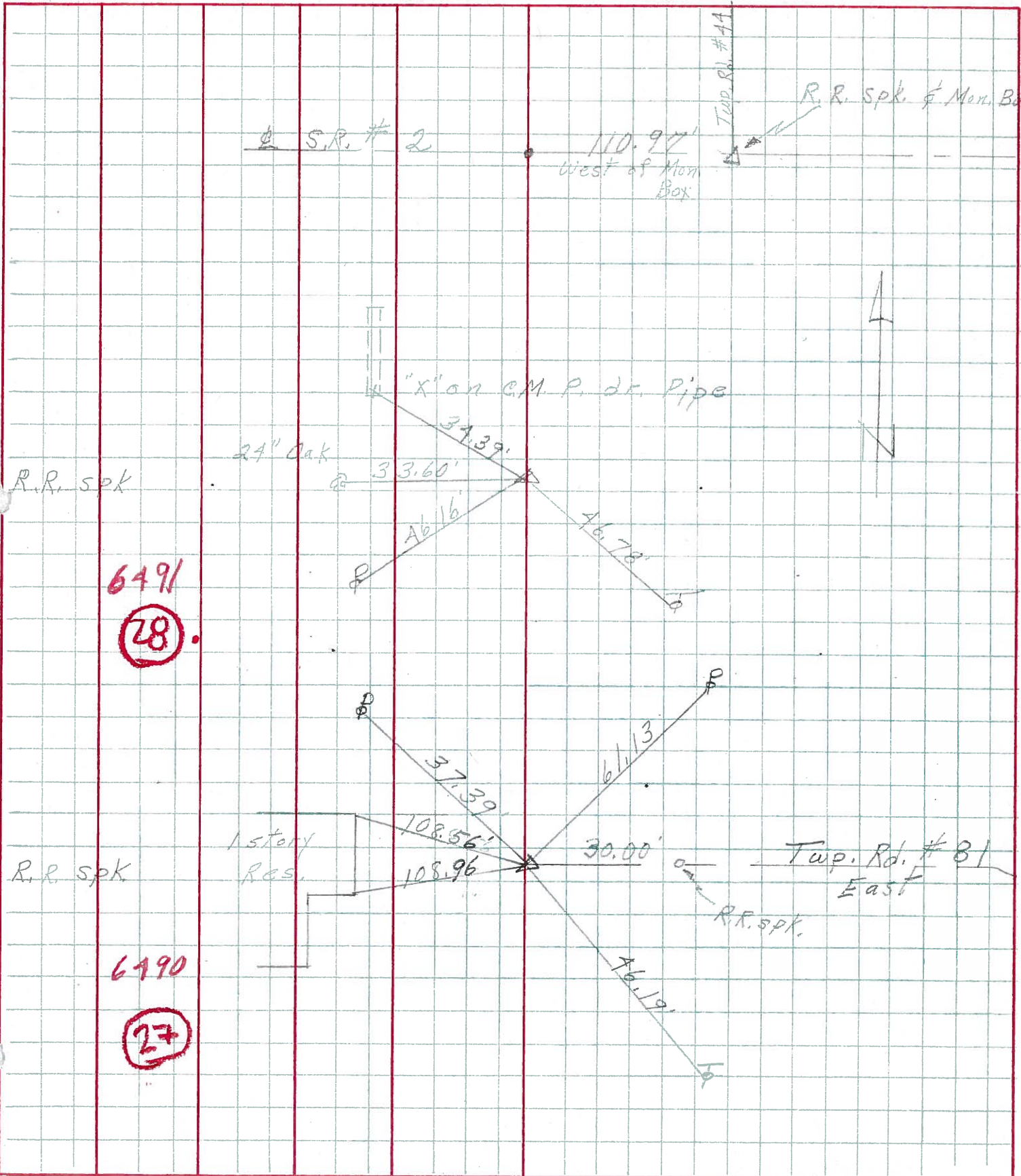
SEC. S.R. #163 to S.R. #2 TEMP. 70°

DESCRIPTION

Ties for Control Points

JOB NO.

LEFT CENTER LINE RIGHT



6491
28

6490
27