

#4007

FOR ANY QUESTIONS PLEASE CONTACT DISTRICT 2 REAL ESTATE AT 419-353-8131

FED. RD. DIVISION	STATE	PROJECT	TYPE FUNDS
2	OHIO	STATE	

1/17

OTT-53-(6.24-7.02)

STATE OF OHIO
DEPARTMENT OF HIGHWAYS
OTT-53-(6.24-7.02)
CITY OF PORT CLINTON
BAY TOWNSHIP
OTTAWA COUNTY

CONVENTIONAL SIGNS

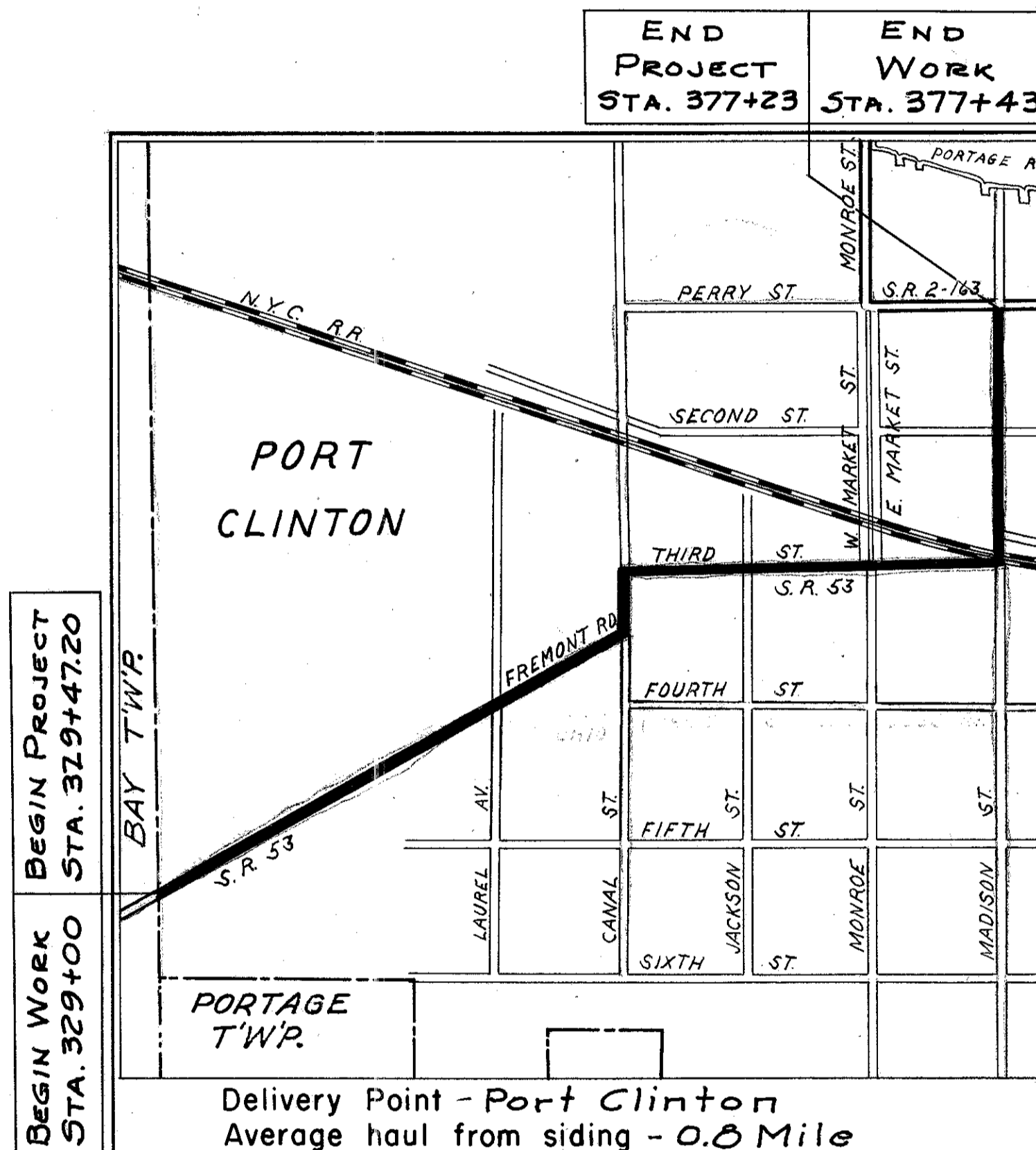
Corporation Line	-----				
Center Line	-----				
Fence Line	-----	x	x	x	x
Railroad	-----				
Power Poles	-----	⊕	⊕	⊕	⊕
Telephone Poles	-----	⊕	⊕	⊕	⊕
Trees or Stumps (existing)	-----	⊗	⊗	⊗	⊗
Trees or Stumps to be removed	-----	⊗	⊗	⊗	⊗

INDEX OF SHEETS

TITLE	1
TYPICAL SECTIONS	2-3
GENERAL NOTES, GENERAL SUMMARY	4
PAVEMENT COMPUTATIONS, SUBSUMMARIES	5
PLAN AND PROFILE	6-9
DRAINAGE DETAILS	10
CROSS SECTIONS	11-17

LINE DATA

BEGIN WORK	STA. 329+00
END WORK	STA. 377+43
GROSS LENGTH OF WORK = NET LENGTH	= 4843 LIN. FT. OR 0.917 MILE.
BEGIN PROJECT	STA. 329+47.20
END PROJECT	STA. 377+23
GROSS LENGTH OF PROJECT = NET LENGTH	= 4775.80 LIN. FT. OR 0.904 MILE.



LOCATION MAP
SCALE OF FEET
0 250 500 1000 1500

Portion to be improved **=====**
State Roads **=====**
Other Roads **=====**
Detours **None**

SCALE
Plan 1" = 50'
Profile Horizontal 1" = 50'
Profile Vertical 1" = 5'

The standard specifications of the State of Ohio, Department of Highways, including changes and supplemental specifications listed in the proposal shall govern this improvement.

The right of way for this improvement will be provided by the State of Ohio.

I hereby approve these plans and declare the making of this improvement will not require the closing of the highway to traffic and that provisions for the maintenance and safety of traffic will be as set forth on the plans and estimates.

Approved W. R. Roush PE 5214
Date Feb. 29, 1957 Division Deputy Director

Approved C. H. Makiwra
Date 4-1-57 Deputy Director of Planning & Programming

Approved _____
Date _____ Engineer of Bridges

Approved P. E. Shultz
Date 3-28-57 Engineer of Location & Design

Approved P. E. Masterton
Date 3-28-57 Deputy Director of Design & Construction

Approved _____
Date _____ First Assistant Director

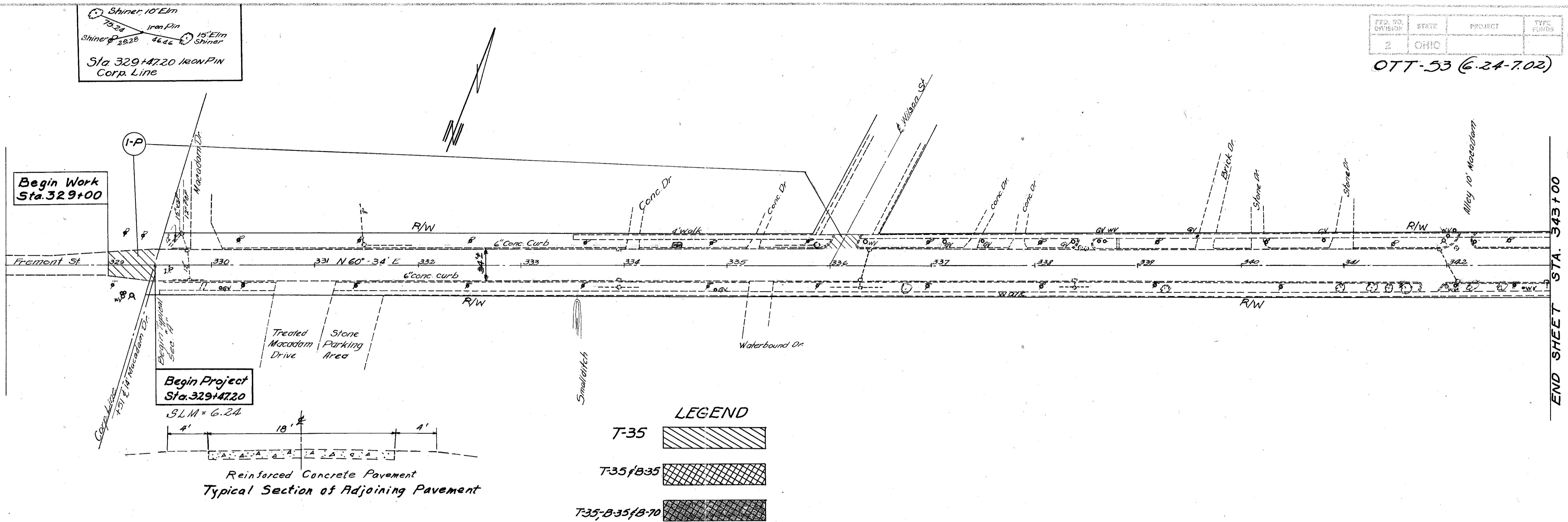
Approved George J. Therniger
Date 4/3/57 Acting Director of Highways

Print Approved.....George J. Tewers.
Date 3-6-57.....Mayor of Port Clinton.

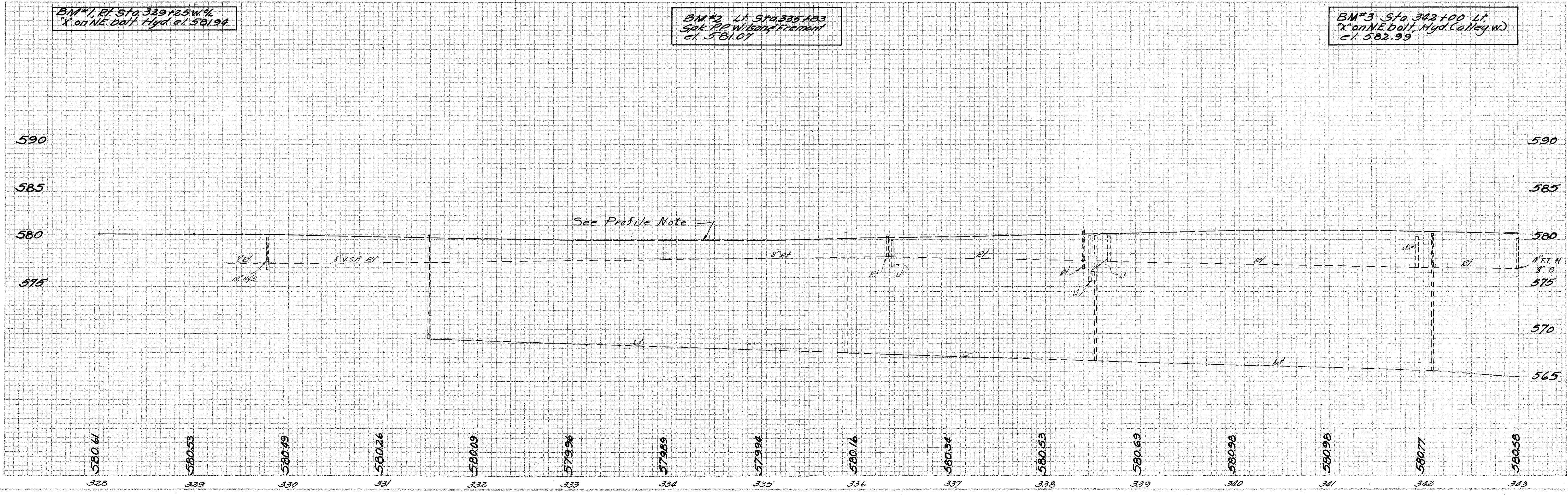
SUPPLEMENTAL SPECIFICATIONS		STANDARD DRAWINGS	
E-101	1-1-57	L-3	4-1-50
		L-3A	4-1-50
		I-B, M.H. No. 1	5-1-52
		T-35	1-2-56
		L-1	4-1-50
		TJ	5-1-56

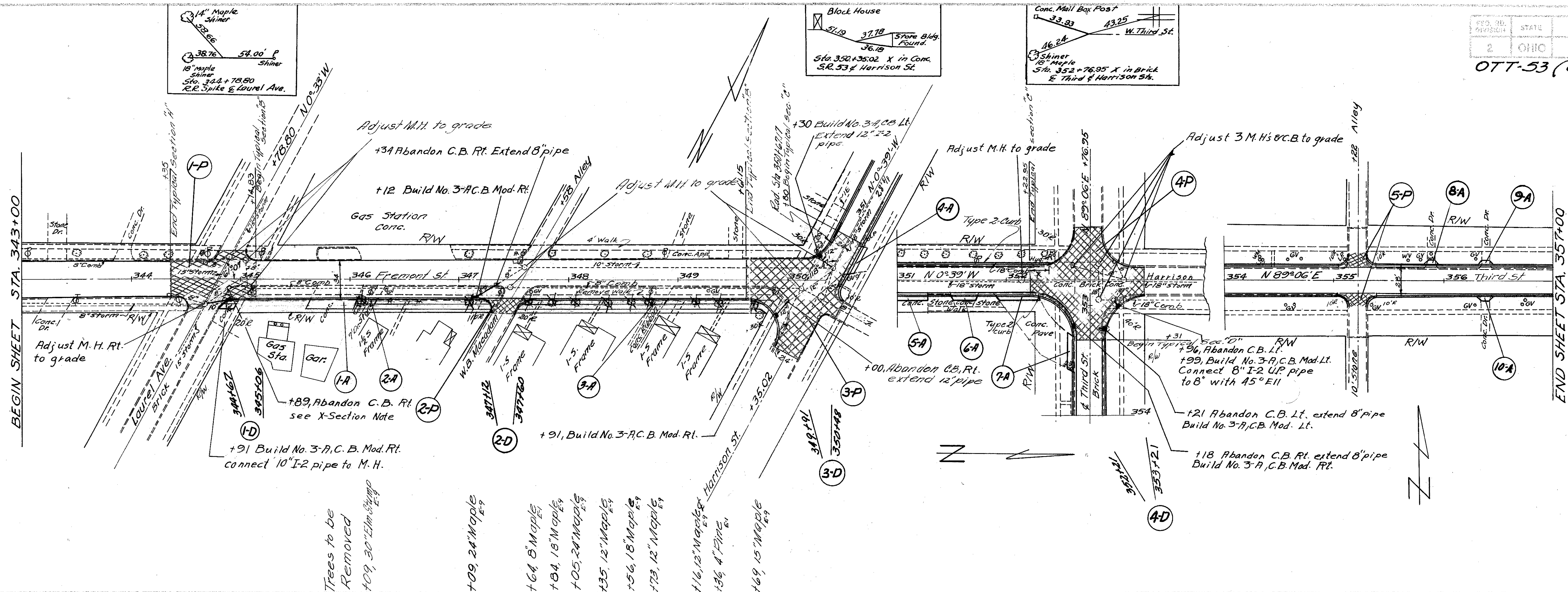
CONSTRUCTION BUREAU
MAR 24 1959
GROUND PHOTOGRAPH

FILE NO	SEC. OTT-53-(6.24-7.02)
DATE OF LETTING	
CONTRACT NO	



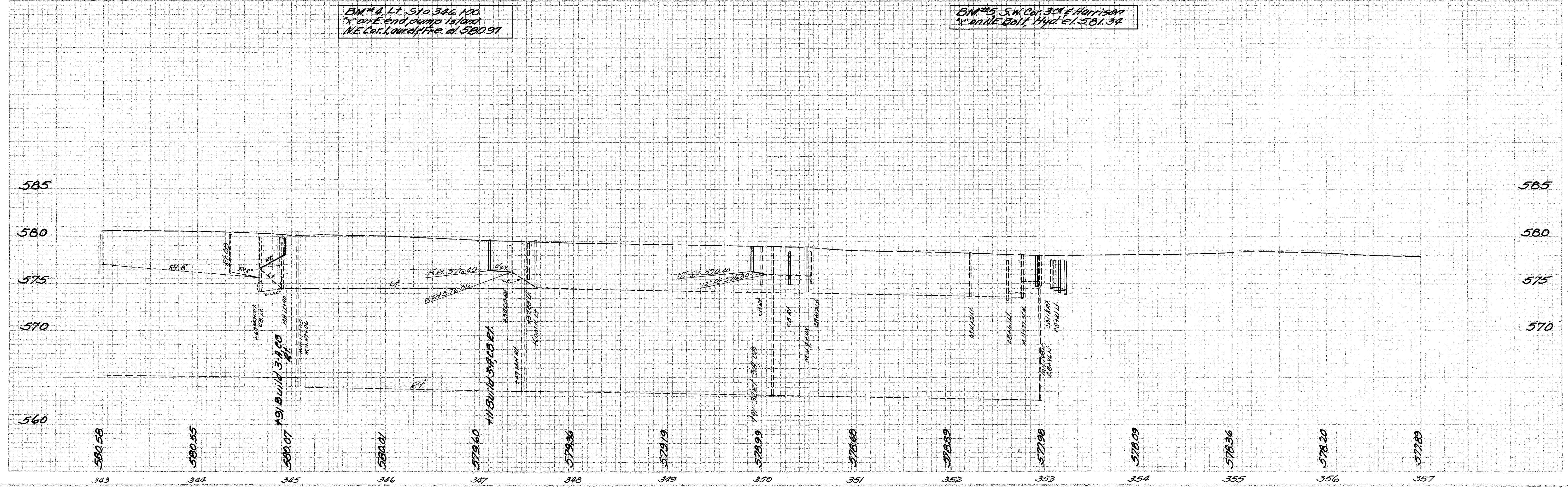
Reinforced Concrete Pavement
Typical Section of Adjoining Pavement





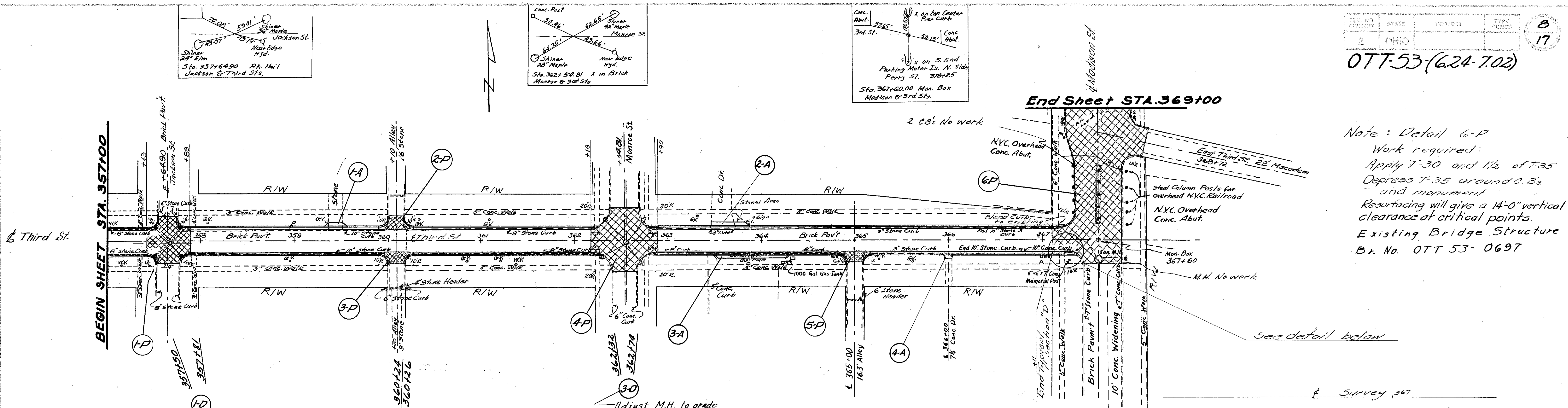
BM #4 Lt Sta. 346+00
 "X" on E end pump island
 NE Cor. Laurel & Fre. at 580.97

BM #5 S.W. Cor. 3rd & Harrison
 "X" on NE Bolt, Hyd. e. 1.581.34



Sta. 343+00 to Sta. 357+00

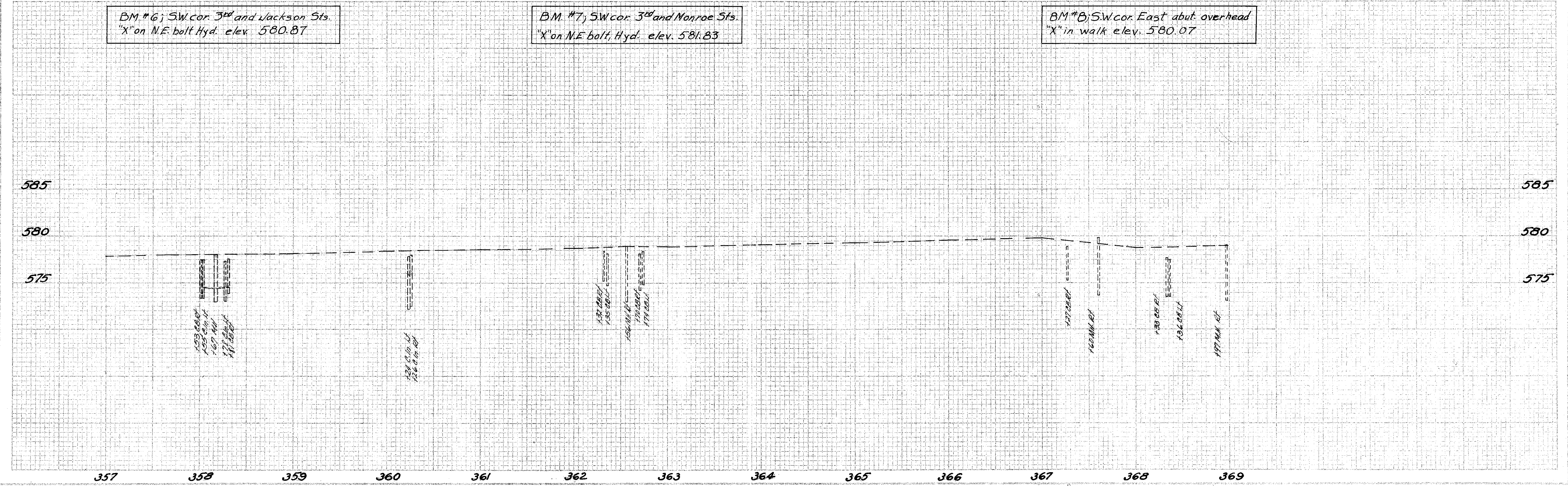
OTT-53-(624-702)



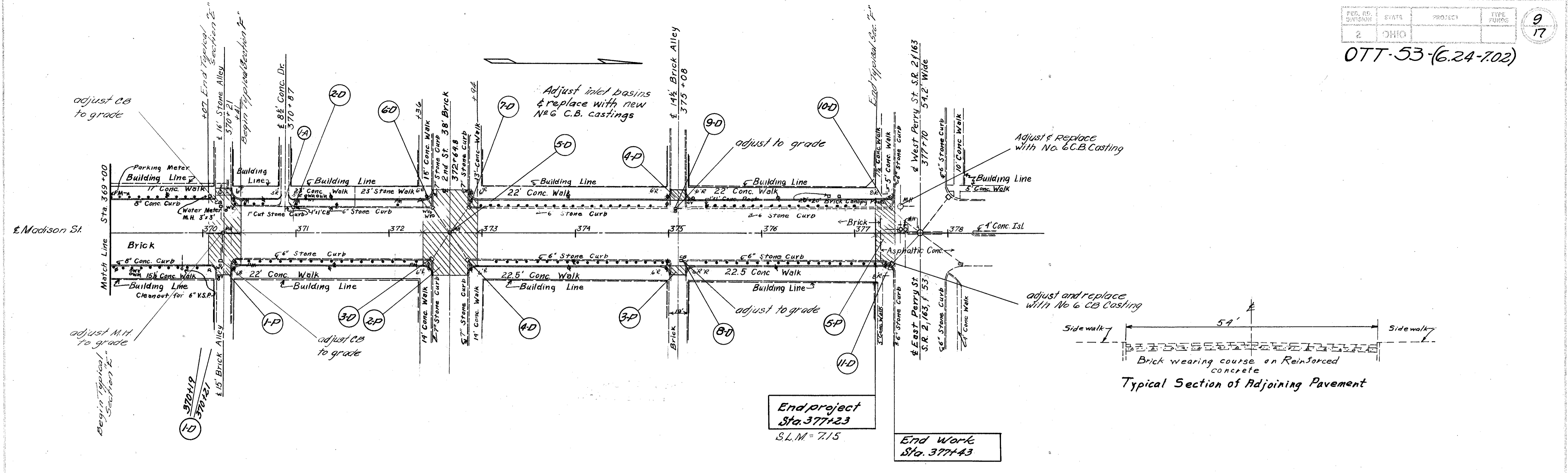
BM #6; SW cor. 3rd and Jackson Sts.
"X" on N.E. bolt Hyd. elev. 580.87

BM #7; SW cor. 3rd and Monroe Sts.
"X" on N.E. bolt Hyd. elev. 581.83

BM #8; SW cor. East abut. overhead
"X" in walk elev. 580.07



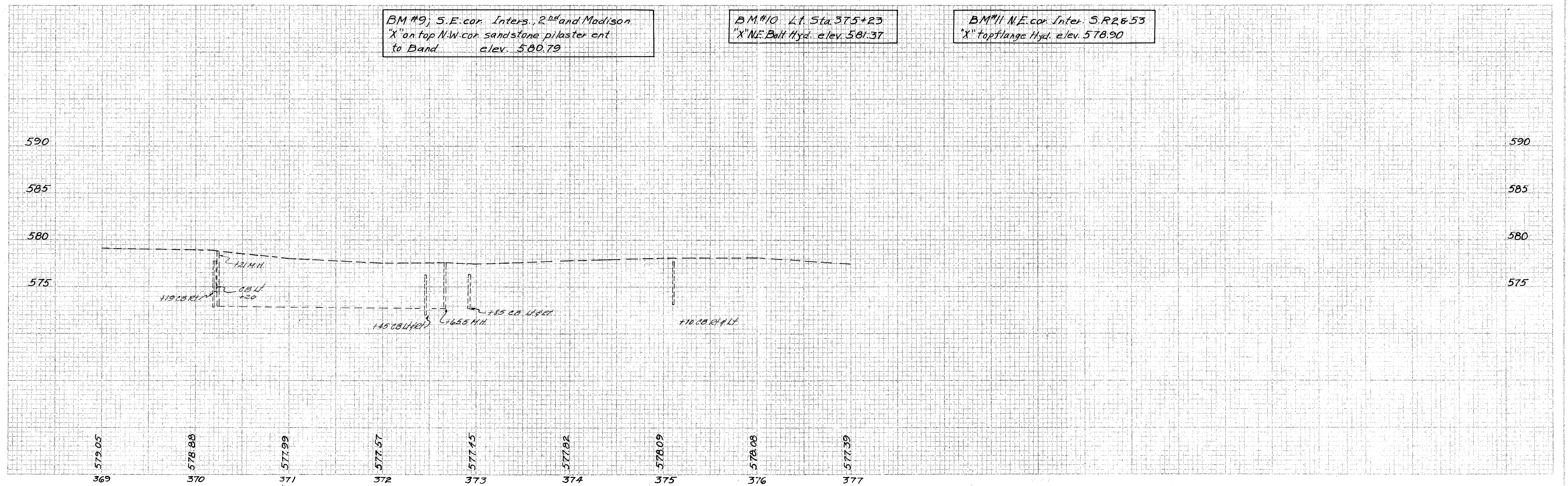
OTT-53-(6.24-702)



BM #9, S.E. cor. Inters. 2nd and Madison
"X" on top N.W. cor. sandstone pilaster ent
to Band elev. 580.79

BM #10 Lt. Sta. 375+23
"X" N.E. Ball Hyd. elev. 581.37

BM #11 N.E. cor. Inter. S.R. 2 & 53
"X" top flange Hyd. elev. 578.90



Sta. 369+00 to Sta. 377+43