

#4635

FOR ANY QUESTIONS PLEASE CONTACT ODOT DISTRICT 2 REAL ESTATE AT 419-353-8131

FED. RD. DIST. NO.	STATE	FED. AID PROJECT	FISCAL YEAR
10	OHIO		1934

1
30

OTTAWA COUNTY
S. H. 569 SEC'S. A-B Pts.

STATE OF OHIO DEPARTMENT OF HIGHWAYS PORT CLINTON-BAY BRIDGE ROAD OTTAWA COUNTY

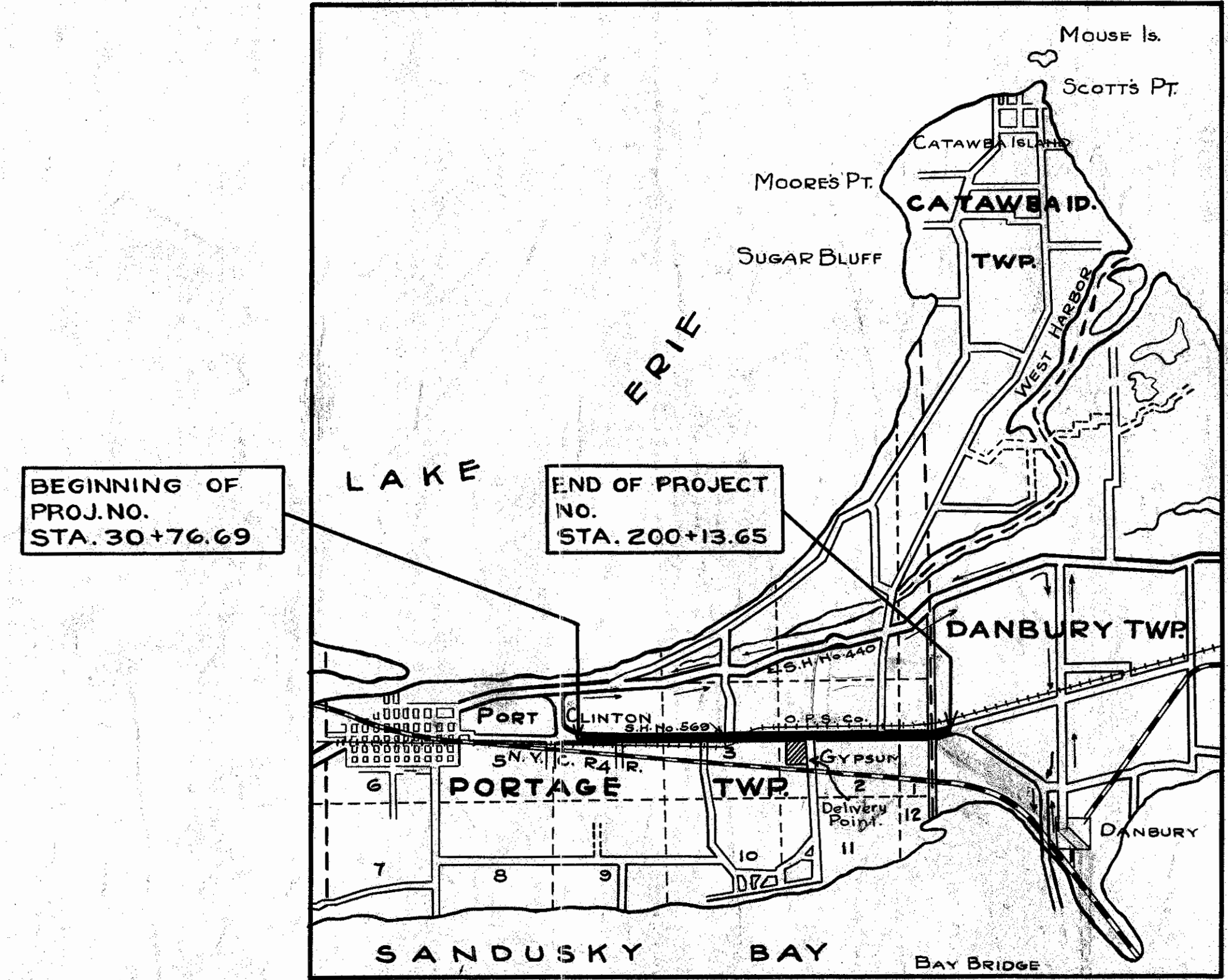
S. H. No. 569 SEC'S. A-B Pts.
BUREAU OF CONSTRUCTION
NET LENGTH OF PROJECT 16,905.56 LIN. FT.

CONVENTIONAL SIGNS

STATE LINE	-----
COUNTY LINE	-----
TOWNSHIP LINE	-----
SECTION LINE	-----
CENTER LINE	-----
PROPERTY LINE	-----
CITY OR VILLAGE LINE	-----
FENCE LINE	-x-x-x-
POLE LINE	o-o-o-o
STEAM RAILROAD	===== ===== =====
ELECTRIC RAILROAD	----- ----- -----
GUARD RAIL	----- o-o-o-o -----
DRAIN PIPE NEW	----- o-o-o-o -----
DRAIN PIPE OLD	-----

INDEX OF SHEETS

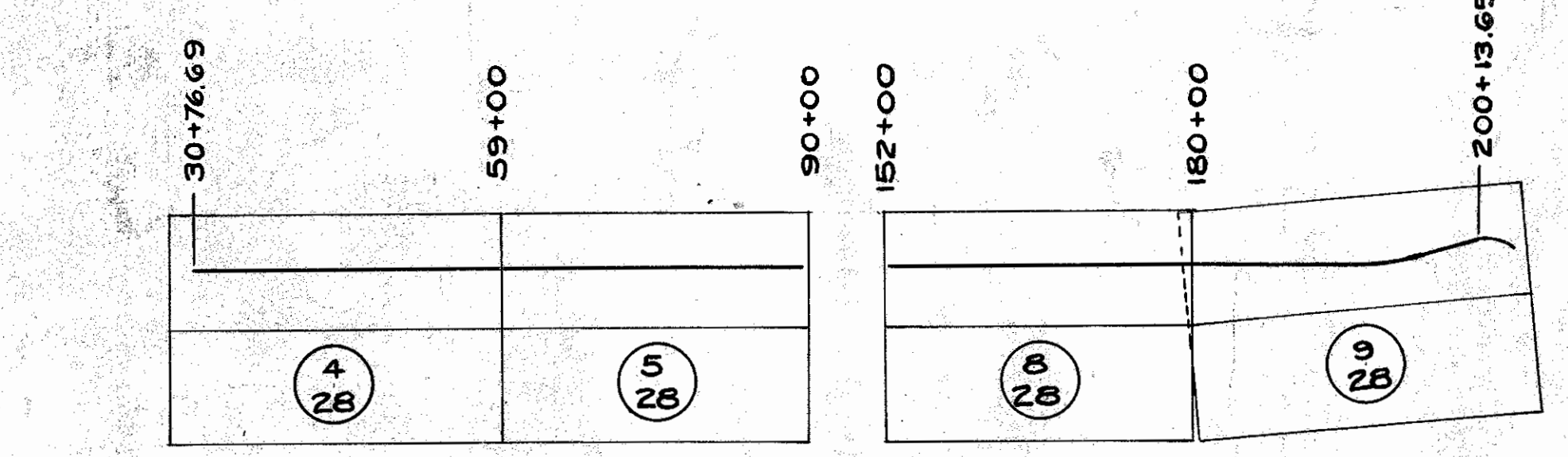
TITLE PAGE	PAGE 1
SUPPLEMENTAL SPECIFICATIONS	2 C
TYPICAL SECTION	2
PLAN & PROFILE	3-8
CROSS-SECTIONS	9-19
EXTRA PAVEMENT	20
STRUCTURES	21-25
CURVE TABLE & SPECIAL DETAILS	26
SUMMARY OF QUANTITIES	27
LANDSCAPING	2A-2B-2C



The Standard Specifications of the State of Ohio, Department of Highways, in force on date of contract, will govern this improvement.

I hereby approve these plans and declare that the making of this improvement will require the closing of traffic of the highway and that detours will be provided as shown on the plans and estimates and that the necessary Right-of-Way has been provided.

- Approved Virgil A. Frye
Date 3-23-34 Resident District Deputy Director
- Approved Richard Outh
Date 4-18-34 Resident Division Deputy Director
- Approved Elmer Heltje
Date 7-7-34 Chief Engr. Bureau of Construction
- Approved _____
Date _____ Chief Engr. Bureau of Maintenance
- Approved J.P. Burkey P.E. 45
Date 5-3-34 Chief Engr. Bureau of Bridges & R.R. Xings
- Approved H.P. Chapman
Date 7-7-34 First Asst. Director and Chief Engr.
- Approved O. Myerell
Date 7-7-34 Director of Highways



LOCATION PLAN
SCALE OF MILES

PORTION TO BE IMPROVED
DETOURS SHOWN THUS
STATE HIGHWAYS
IMPROVED COUNTY ROADS
UNIMPROVED COUNTY ROADS

CONSTRUCTION BUREAU
JUL 8 1955
GROUND PHOTOLAB

PLAN 1" = 100'
PROFILE VERTICAL 1" = 5'
PROFILE HORIZONTAL 1" = 100'
CROSS SECTIONS 1" = 5'

SUPPLEMENTAL PRINTS OF STANDARD DRAWINGS NOS. - T-70J; S-27, P.C. 1; S-27, P.C. 2; I-1, 2, 3, 4, 45; I-8, C.B. 1-2-2; I-8, C.B. 1-3, 1-4; I-8, C.B. 2-3, 2-4; I-8, C.B. 2-5, 2-6; G, 7, 07

Recommended for Approval _____
Date _____ Dist. Engr. Bureau of Public Roads.

Recommended for Approval _____
Date _____ Chief Engr. Bureau of Public Roads.

Approved _____
Date _____ Chief of Bureau

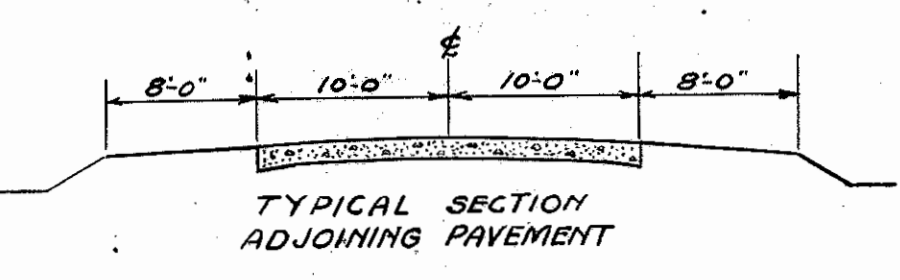
FILE NO.	OTTAWA COUNTY S.H. 569 SEC. A-B PARTS 1934
----------	--

90+00	121+00	152+00	200+00
(6) 28	(7) 28		

RECEIVED
By M. Carroll
Clerk of Sales
Date 7-7-1934

OFFICE	BY	DATE
RESIDENT DIVISION	Terry	7-17-34
CENTRAL CONST.	C. C. H.	6-18-34
CENTRAL BRIDGES		
BUR. OF PUBLIC ROADS.		

APPROVED
L. M. Moore P.E.
Planning Engineer
Date Apr 17-34
Remarks 1/20 with T-70 part, Gray & Sigs.

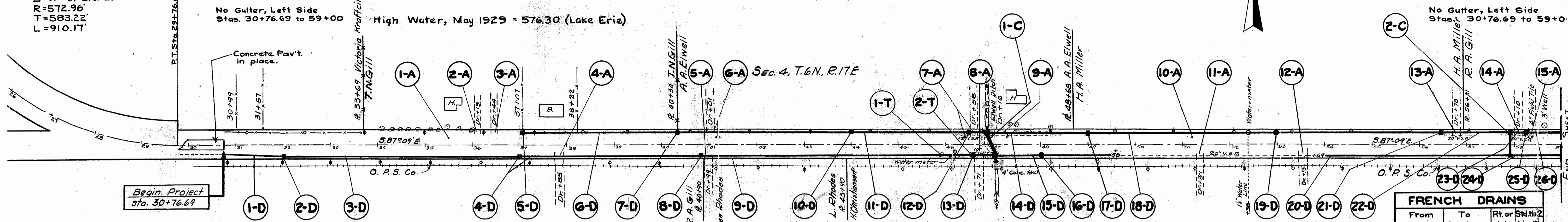


CURVE DATA
 D=10°
 Δ=91°-01' L. or E.
 R=572.96'
 T=583.22'
 L=910.17'

Item No.	Station	Removals		Type	Size	Excavation Cu.Yds.	Stone Screenings Backfill Cu.Yds.	Pipe, Lin. Ft.			Std. Catch Basins Each	Dowel Holes Each	1-5/2 Conc. Cu. Yds.	Reinf. Steel Lbs.	Remarks		
		Type	Size					Ex. Qual. Dr. Tile	R.C.P. (a)	R.C.P. (b)							
1-C	46+98.5	Stone Masonry	27	S-27	30x52	44	40	14	13	8	52	1	1	17	2.8	87	Remove Headwall and Top of Old Arch Culvert. Build Special Headwall against O.P.S. Culvert and Connect to South Catch Basin with 30" R.C.P. (a)
2-C	57+95			S-27	12x48	25	23				48	1	1				
TOTALS			27			69	63	14	13	8	48	2	2	17	2.8	87	

FED. RD. DIST. NO.	STATE	FED. AID PROJECT	FISCAL YEAR
10	OHIO		1934

S. H. No. 569 SEC. A-B PTS.
 OTTAWA COUNTY.



Item No.	Station	Rt. or Lt.	Pipe, Lin. Ft.				Std. No. 2 Catch Basins Each	Special Side Ditch Inlets	Std. No. 4 Catch Basins Each	Remarks
			6"	8"	10"	36"				
1-D	30+77	Rt.			122				Connect into Existing 10" V.S.P.	
2-D	32+00	Rt.								
3-D	32+00	Rt.	499							
4-D	37+00	Rt.	362			20			R.C.P. Under Drive, Sta. 37+85	
5-D	37+07	Lt.								
6-D	37+07	Lt.	669			20			R.C.P. Under Drive, Sta. 41+01	
7-D	40+34	Lt.							See Detail Sheet 27	
8-D	40+84	Rt.								
9-D	40+84	Rt.	580			40			R.C.P. Under Drive, Sta. 40+99 & 46+71	
0-D	44+00	Lt.								
1-D	44+00	Lt.	263			20			R.C.P. Under Drive, Sta. 46+58	
2-D	46+43	Lt.							See Detail Sheet 27	
3-D	46+56	Rt.								
4-D	46+56	Rt.								
4-D	46+88	Lt.			187	20			R.C.P. Under Drive 47+16	
5-D	47+09	Rt.	255						Connect 20" V.S.P.	
6-D	48+00	Rt.							See Detail Sheet 27	
7-D	49+00	Lt.								
Subtotal			2365	263	122	187	80	20	20	

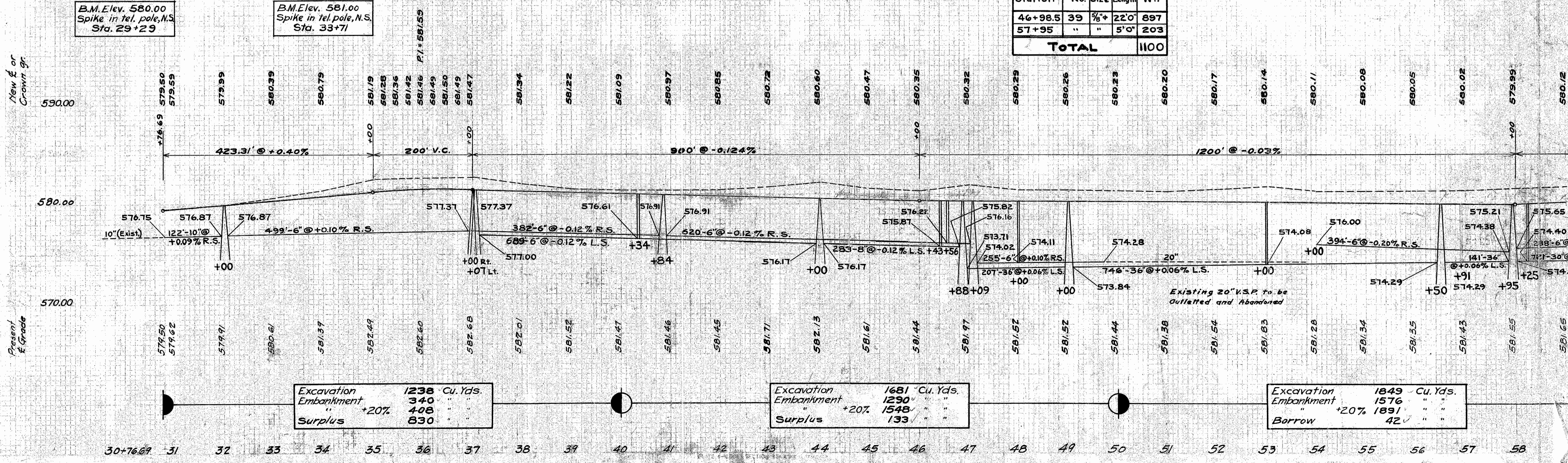
Item No.	Station	Rt. or Lt.	Pipe, Lin. Ft.				Catch Basins	Special Side Ditch Inlets	Remarks					
			6"	8"	10"	36"								
18-D	49+00	Lt.				746								
19-D	53+00	Lt.												
20-D	53+00	Rt.	394					See Detail Sheet 27						
21-D	56+50	Lt.						Plug End. Sta. 54+00						
22-D	56+50	Lt.												
23-D	57+95	Lt.			121	20		R.C.P. Under Drive, Sta. 56+78						
24-D	57+95	Lt.						" " " " 58+10						
25-D	57+95	Lt.	268			20		" " " " 60+36						
26-D	58+45	Lt.	9					See Detail Sheet 27						
TOTALS			3036	263	122	701	1054	100	20	20	40	5	2	6

Item No.	Station	Rt. or Lt.	Stone Cu. Yds.	Remarks
2-A	36+13	Lt.	4.0	
3-A	36+44	Lt.	4.0	
4-A	37+85	Rt.	4.0	
5-A	40+99	Rt.	4.0	
6-A	41+01	Lt.	8.5	
7-A	46+58	Lt.	8.5	
8-A	46+71	Rt.	4.0	
9-A	47+16	Lt.	8.5	
10-A	51+20	Lt.	4.5	
11-A	51+37	Rt.	4.0	
12-A	53+55	Rt.	4.0	
13-A	56+78	Lt.	4.0	
14-A	58+10	Lt.	4.0	
15-A	58+35	Lt.	4.5	
TOTALS			75.0	

From Station	To Station	Rt. or Lt.	Stk. No.	Remarks
31+00	49+00	Rt.	380	
38+50	46+50	Lt.	180	
48+50	58+50	Lt.	220	
55+00	59+00	Rt.	75	
TOTAL			915	

Item No.	Station	Rt. or Lt.	Size	Dist. Out.	Remarks
2-T	46+52	Rt.	10"	21.5'	
TOTAL No. = 2					

Station	No.	Size	Length	Wt.
57+95	"	"	5'0"	203
TOTAL				1100



Excavation	1238	Cu. Yds.
Embankment	340	"
" +20%	408	"
Surplus	830	"

Excavation	1681	Cu. Yds.
Embankment	1290	"
" +20%	1548	"
Surplus	133	"

Excavation	1849	Cu. Yds.
Embankment	1576	"
" +20%	1891	"
Borrow	42	"

30+76.69 31 32 33 34 35 36 37 38 39 40 41 42 43 44 45 46 47 48 49 50 51 52 53 54 55 56 57 58
 Sta. 30+76.69 to 59+00

STRUCTURES 20' SPAN AND UNDER

Item No.	Station	Type	Size	Pipe - Lin.Ft.			Pipe Special	Catch Basins	Excava- tion	Screenings	Headwalls	Remarks			
				R.C.P. (15")	R.C.P. (12")	R.C.P. (15")									
1-C	73+63	S-27	24" x 47'					41	35		Clean Existing 24" V.S.P.				
2-C	79+90	S-27	12" x 48'				2	26	24						
3-C	86+02	S-27	15" x 48'	6			2	28	23	0.9	23				
4-C	89+03	S-27	15" x 48'			54	1	27	25						
TOTALS				6	48	102	47	1	5	2	122	107	0.9	23	

TREE REMOVALS

Item No.	Station	Rt. or Lt.	Size	Dist. Out
1-T	78+99	Lt.	10"	18.2'
2-T	79+17	Lt.	10"	18.0'
3-T	79+75	Lt.	12"	18.4'
4-T	80+17	Lt.	10"	18.3'
5-T	80+34	Lt.	10"	19.2'
TOTAL No. = 5				

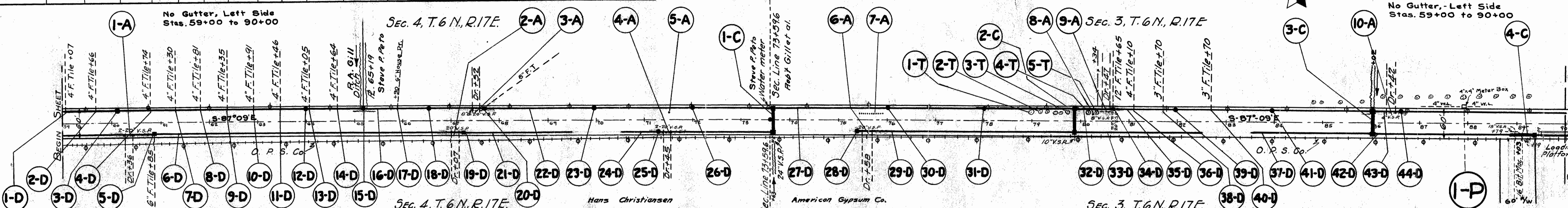
FRENCH DRAINS

From Station	To Station	Rt. or Lt.	Lin. Ft.
59+50	61+50	Lt.	60
60+00	88+00	Rt.	435
65+50	75+50	Lt.	220
78+50	86+50	Lt.	180
88+50	89+50	Lt.	40
TOTAL			

FED. RD. DIST. NO.	STATE	FED. AID PROJECT	FISCAL YEAR
10	OHIO		1934

S.H. No. 569 SEC. A, B, Pts. OTTAWA COUNTY.

4
30



ROADWAY DRAINAGE

Item No.	Station From To	Rt. or Lt.	Pipe Lin.Ft.			Special Side Ditch Inlets	Std. Catch Basins Each	Remarks
			6"	8"	30"			
1-D	59+07	Lt.	9				Connect 4" F.T.	
2-D	59+66	Lt.	9				Connect 4" F.T.	
3-D	60+10	Lt.	9				See Details Sheet 27	
4-D	60+74	Lt.	9				Connect 4" F.T.	
5-D	60+85	Rt.	9				Connect 6" F.T. to Std. No. 1-2 C. Basin	
6-D	60+85	Rt.	615		20		R.C.P. under Drive, Sta. 67+07	
7-D	61+30	Lt.	9				Connect 4" F.T.	
8-D	61+81	Lt.	9				Connect 4" F.T.	
9-D	62+35	Lt.	9				Connect 4" F.T.	
10-D	62+91	Lt.	9				Connect 4" F.T.	
11-D	63+46	Lt.	9				Connect 4" F.T.	
12-D	64+00	Lt.	9				See Details Sheet 27	
13-D	64+05	Lt.	9				Connect 4" F.T.	
14-D	64+64	Lt.	9				Connect 4" F.T.	
15-D	65+19	Lt.	9				Connect 4" F.T.	
16-D	65+19	Lt.	9		225	20	R.C.P. under Drive, Sta. 67+52	
17-D	65+90	Lt.	9				Connect 6" House Drain	
18-D	66+55	Lt.	9				See Details Sheet 27	
19-D	67+22	Rt.	9				Connect 6" F.T. to Std. No. 1-2 C. Basin	
20-D	67+67	Lt.	12				Plug End. Sta. 69+50	
21-D	67+22	Rt.	227					
22-D	67+67	Lt.	9		593			
Subtotals			950	12	818	20	20	

ROADWAY DRAINAGE

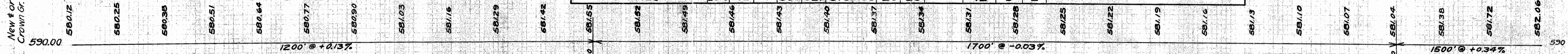
Item No.	Station From To	Rt. or Lt.	Pipe Lin.Ft.			Special Side Ditch Inlets	Std. Catch Basins Each	Remarks						
			6"	8"	30"									
23-D	70+00	Lt.	9				See Details Sheet 27							
24-D	70+50	Rt.	290			20	R.C.P. under Drive, Sta. 71+45. Plug End.							
25-D	71+90	Rt.	9				See Details Sheet 27							
26-D	72+00	Lt.	9				" " " "							
27-D	73+63	Rt.	9		621		" " " "							
28-D	75+43	Rt.	9				See Details Sheet 27							
29-D	75+43	Rt.	424			20	R.C.P. under Drive, Sta. 75+58							
30-D	76+00	Lt.	9				See Details Sheet 27							
31-D	78+00	Lt.	9				" " " "							
32-D	79+90	Rt.	9		53	20	R.C.P. under Drive, Sta. 80+47							
33-D	79+90	Rt.	259				Plug End. Sta. 82+50							
34-D	80+65	Lt.	9				Connect 12" F.T. to Std. No. 1-2 Catch Basin							
35-D	80+65	Lt.	9		531		" " " "							
36-D	81+10	Lt.	9				Connect 3" F.T.							
37-D	83+50	Rt.	251				Plug End. Sta. 83+50							
38-D	81+70	Lt.	9				Connect 3" F.T.							
39-D	82+00	Lt.	9				See Details Sheet 27							
40-D	82+70	Lt.	9				Connect 3" F.T.							
41-D	84+00	Lt.	9				See Details Sheet 27							
42-D	86+02	Rt.	9		283		" " " "							
43-D	86+02	Rt.	674			40	R.C.P. under Drives, Sta. 86+42 & 93+05							
44-D	86+57	Lt.	9				See Details Sheet 27							
TOTALS			2875	12	967	621	818	100	20	20	12	3	2	

SIDE APPROACHES

Item No.	Station	Rt. or Lt.	Stone Lt. Cu.Yds.
1-A	60+36	Rt.	4.0
2-A	67+07	Rt.	4.5
3-A	67+52	Lt.	8.0
4-A	71+45	Rt.	4.0
5-A	71+50	Lt.	4.5
6-A	75+58	Rt.	4.0
7-A	75+70	Lt.	6.0
8-A	80+25	Lt.	4.5
9-A	80+47	Lt.	4.0
10-A	86+42	Lt.	4.0
TOTAL			47.5

TRENCH REINFORCING

Station	No.	Size	Length	Wt.
73+63	39	3/4" x 6'0"	244	
79+90	"	" " 5'0"	203	
86+02	"	" " 5'0"	203	
TOTAL				650



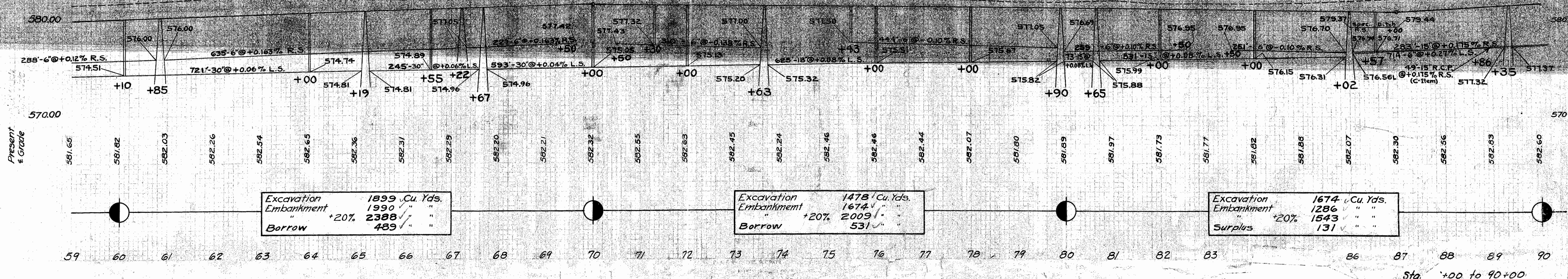
B.M. Elev. 581.00 Spike in trolley pole Station 59+44

B.M. Elev. 582.00 Spike in trolley pole Station 65+59

B.M. Elev. 582.00 Spike in trolley pole Station 71+73

B.M. Elev. 582.00 Spike in trolley pole Station 77+87

B.M. Elev. 582.00 Spike in trolley pole Station 83+99



Excavation	1899	Cu. Yds.
Embankment	1990	"
Borrow	489	"

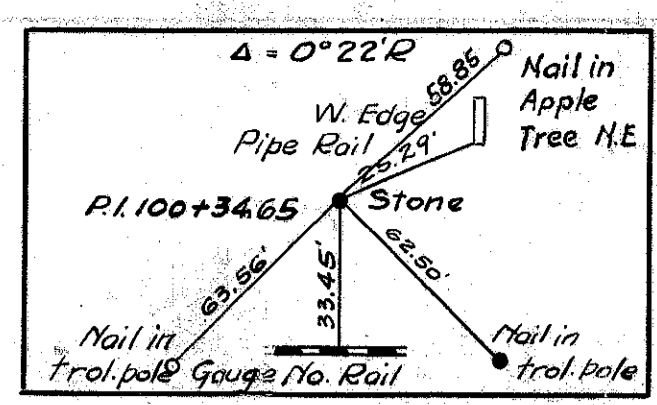
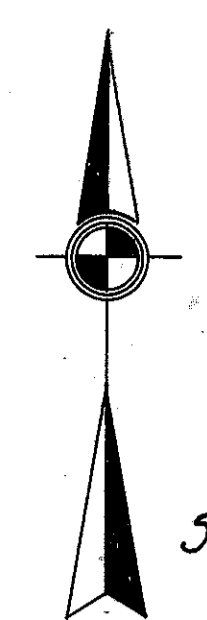
Excavation	1478	Cu. Yds.
Embankment	1674	"
Borrow	531	"

Excavation	1674	Cu. Yds.
Embankment	1286	"
Surplus	1543	"

STRUCTURES 20' SPAN AND UNDER

Item No.	Station	Type	Size	Removals		Excavation Cu.Yds.	Screenings Cu.Yds.	Pipe - Lin. Ft.				Catch Basins			Headwalls		Remarks	
				Can. concrete Cu.Yds.	Stone Masonry Cu.Yds.			R.C.P. (6")	R.C.P. (12")	R.C.P. (15")	R.C.P. (18")	Std. Nos.	1-2	1-4	2-4	Dowel Holes Each		Concrete 1-5" Cu.Yds.
1-C	100+48	S-27	12'x47'	3	6	22	34	47			8	1	1				Remove old headwall and top of old culvert and old 36" Seg. Blk. Tile.	
2-C	103+31	S-27	30'x48'	1		60	50			48			1		15	1.8	85	Remove top old H.Wall and old 36" Seg. Blk. Tile. Build Spec. H.Wall against old H.Wall.
3-C	108+00	S-27	15'x47'			34	32	47					2					
4-C	111+00	S-27	12'x48'			26	24	48					2					
TOTALS				4	6	142	140	95	47	48	8	5	1	1	15	1.8	85	

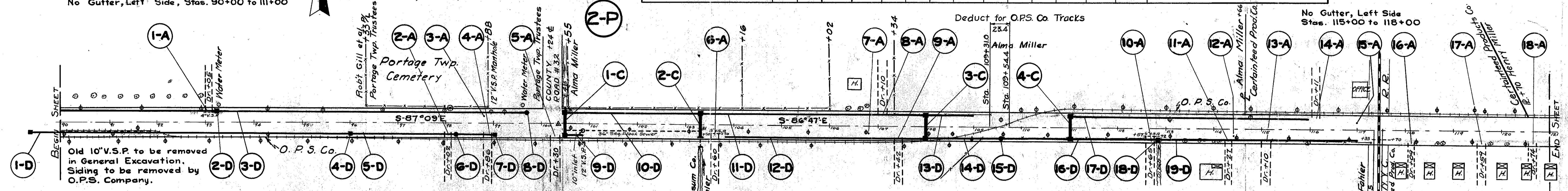
S. H. No. 569 SEC. A, B Pts.
OTTAWA COUNTY.



Contractor to furnish and Place 1 Monument Box. Station 100+34.65

No Gutter, Left Side, Stas. 90+00 to 111+00

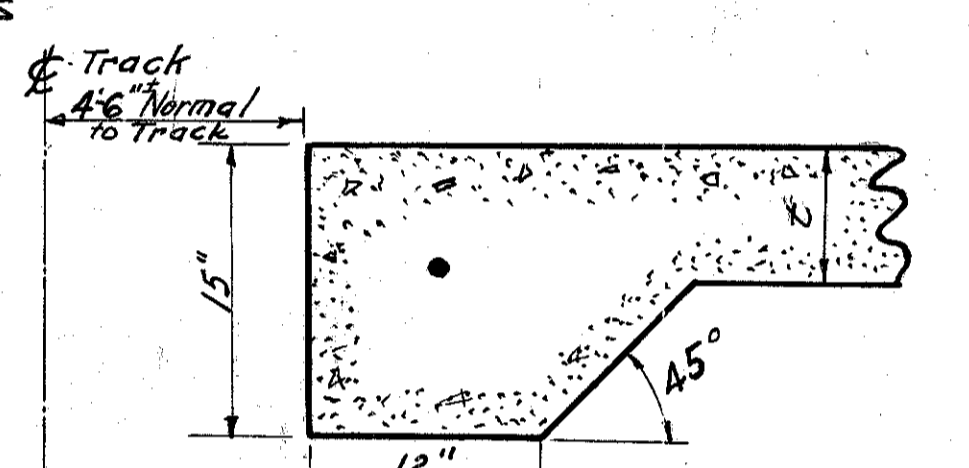
Sec. 3, T. 6 N., R. 17 E.



ROADWAY DRAINAGE

Item No.	Station From	Station To	Rt. or Lt.	Pipe, Lin. Ft.				Special Side Ditch Inlets	Std. No. 2 Catch Basins Each	Remarks					
				Ex. Quality Drain Tile	P.C.P.	R.C.P. (a)	R.C.P. (b)								
1-D	89+35	96+00	Rt.	663	15"	36"	6"	15"							
2-D	93+20		Lt.												
3-D	93+20	99+70	Lt.	548					100	Sealed Line, Sta. 97+56 - 98+56					
4-D	96+00		Rt.												
5-D	96+00	99+00	Rt.	256		40				R.C.P. under Drives, Sta. 98+02 & 98+86					
6-D	98+17		Rt.												
7-D	99+00		Rt.												
8-D	99+70		Lt.												
9-D	100+48	100+86	Rt.	36											
10-D	100+48	103+31	Lt.			279									
11-D	103+31	108+00	Lt.			362		20	84	R.C.P. Sta. 107+10; Sealed Line, 106+20 - 107+04					
12-D	103+80	108+00	Rt.	399		20				R.C.P. under Drive, Sta. 107+42					
13-D	108+00	109+00	Lt.	99											
14-D	108+00	111+00	Rt.			246		50		R.C.P. under O.P.S. Co. Tracks					
15-D	109+50		Rt.												
16-D	111+00	112+77	Rt.	155				20		R.C.P. under Drive, Sta. 112+65					
17-D	111+00	116+00	Lt.	324					175	Sealed Line, Stas. 113+10 to 114+35; 115+70 to 116+20					
18-D	112+77		Rt.												
19-D	112+77	117+00	Rt.	382		40				R.C.P. under Drives, Stas. 114+27, 115+10					
TOTALS				2671	191	608	279	100	20	70	275	84	3	4	

NOTE: Removal of 36" Segmental Block Tile is included in General Excavation. See Cross-Sections.



EDGE THICKENING AT R.R. CROSSINGS. At STA. 57A.5 - 109+31.0; 109+34.4; 117+42.5; 117+50.5 (Extra Concrete Included in Pavement for Payment)

TRENCH REINFORCING STEEL

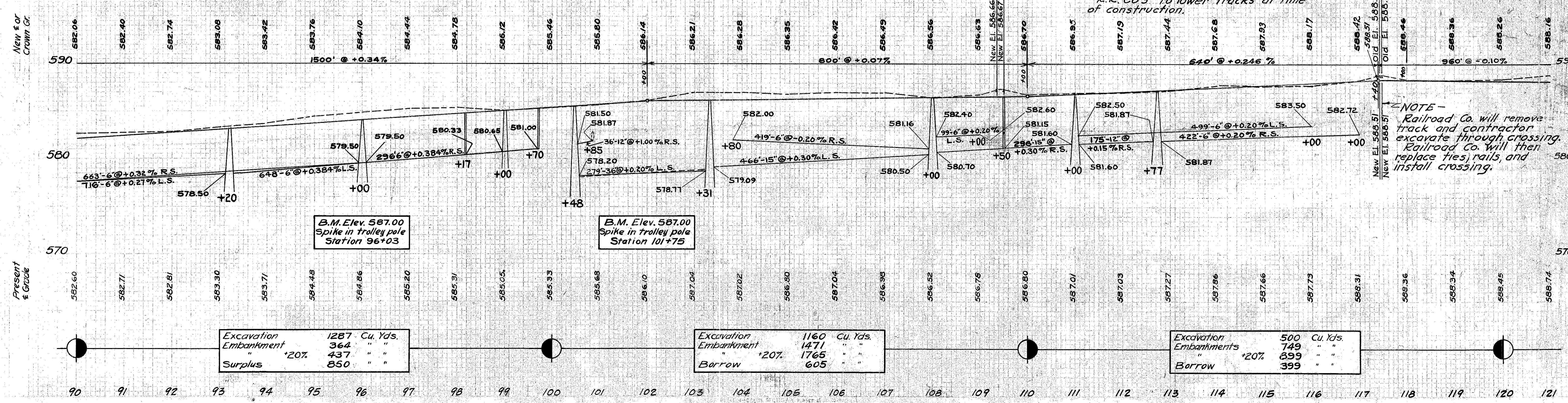
Station	No.	Size	Length	Wt.
100+48	39	3/4"	10' 0"	408
103+31	"	"	8' 0"	326
108+00	"	"	6' 0"	244
111+00	"	"	5' 0"	203
TOTAL				1181

FRENCH DRAINS

From Station	To Station	Rt. or Lt.	Lin. Ft.
90+00	117+00	Rt.	420
90+50	94+50	Lt.	100
101+50	115+50	Lt.	225
118+50	120+50	Lt.	45
TOTAL			790

SIDE APPROACHES

Item No.	Station	Rt. or Lt.	Stone Cu.Yds.
1-A	93+05	Lt.	4.0
2-A	98+02	Rt.	4.0
3-A	98+86	Lt.	4.5
4-A	98+86	Rt.	4.0
5-A	100+30	Rt.	4.0
6-A	103+60	Rt.	4.0
7-A	106+80	Rt.	4.5
8-A	107+10	Lt.	4.0
9-A	107+42	Rt.	4.0
10-A	112+65	Rt.	4.0
11-A	114+27	Rt.	4.0
12-A	114+40	Rt.	4.5
13-A	115+10	Rt.	4.0
14-A	116+11	Lt.	4.0
15-A	117+00	Lt.	4.5
16-A	118+09	Rt.	4.0
17-A	119+54	Rt.	4.0
18-A	120+74	Rt.	4.0
TOTAL			74.0



Excavation	1287	Cu. Yds.
Embankment	364	"
Surplus	437	"
Surplus	850	"

Excavation	1160	Cu. Yds.
Embankment	1471	"
Surplus	1765	"
Barrow	605	"

Excavation	500	Cu. Yds.
Embankments	749	"
Surplus	839	"
Barrow	399	"

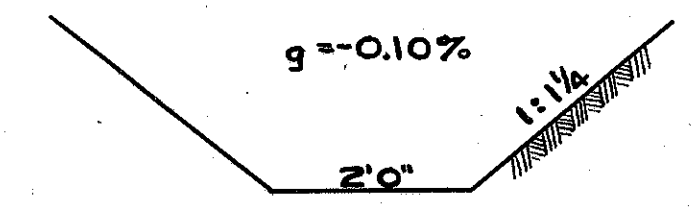
Note: Omit crown on pavement adjacent to railroad tracks

Note: Pavement to be thickened at Railroad Crossings as shown above. R.R. Co's to lower tracks at time of construction.

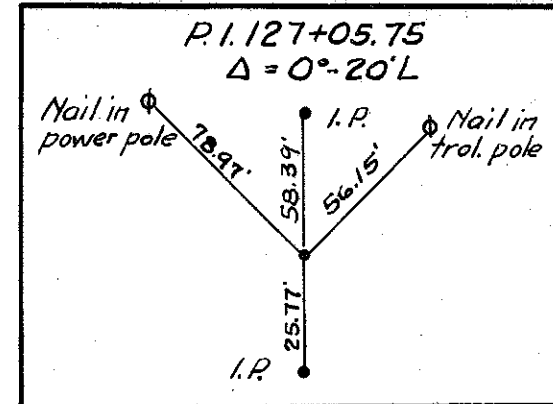
NOTE - Railroad Co. will remove track and contractor excavate through crossing. Railroad Co. will then replace ties, rails and install crossing.

Elev. = 583.10
At Catch Basin

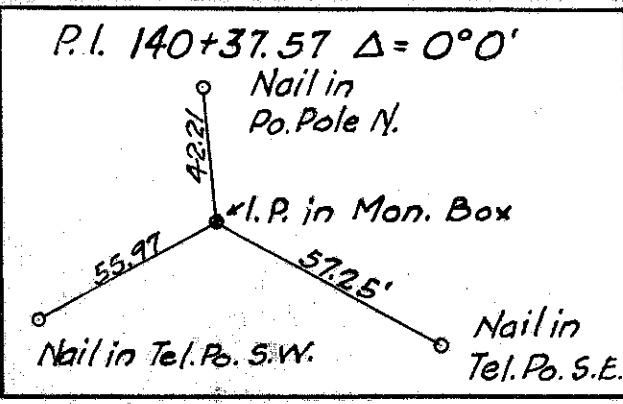
Elev. = 582.80
300' South of
Catch Basin



TYPICAL SECTION
CHANNEL EXCAVATION
STATION 125+64
Approx. 27 Cu.Yds.



STRUCTURES 20' SPAN AND UNDER								
Item No.	Station	Type	Size	Excavation Cu. Yds.	Screenings Cu. Yds.	Std. No. 1-2 Catch Basins	12" R.C.P. (b) Lin. Ft.	Remarks
1-C	127+03	S-27	12x48	18	17	2	48	Build 1 S-27 Culvert and 2 Std. No. 1-2 Catch Basins.
TOTALS				18	17	2	48	

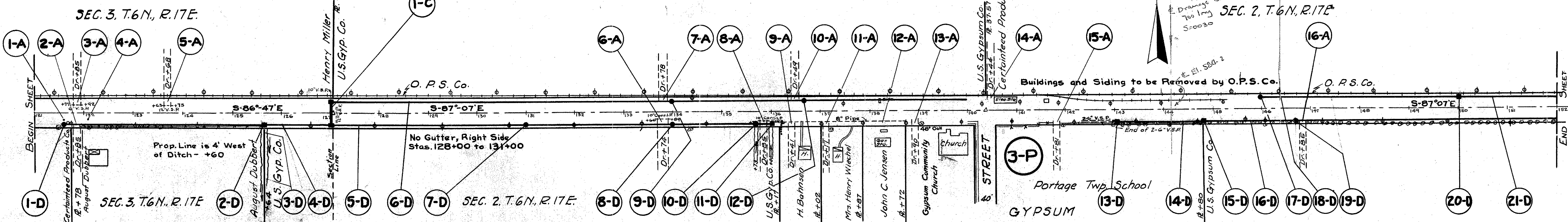


NOTE: Contractor to Reset
2 Monument Boxes; Stas.
127+05.75 & 140+37.57

FED. RD. DIST. NO.	STATE	FED. AID PROJECT	FISCAL YEAR
10	OHIO		1934

6
30

S.H. No. 369 SEC. A, B, Pts.
OTTAWA COUNTY.

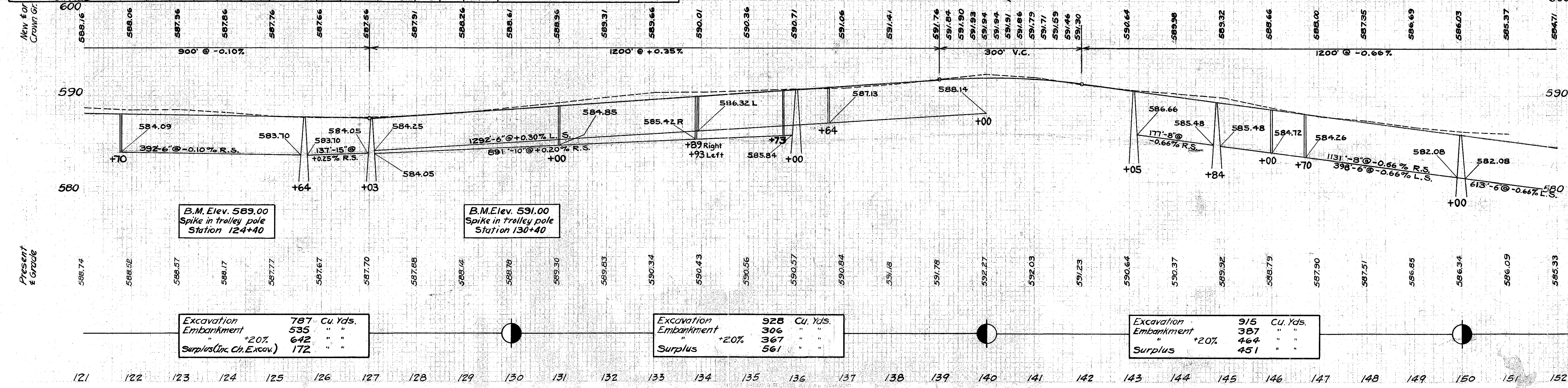


Item No.	Station	Rt. or Lt.	Pipe, Lin. Ft.				Special S. Ditch Inlets Each	Std. Catch Basins Each	Channel Excavation Cu. Yds.	Remarks		
			Ex. Quality Drain Tile	P.C.P. Sealed	R.C.P. (b)	R.C.P. (b)						
1-D	121+70	Rt.	186	10"	15"	6"	8"	6"	8"	10"	R.C.P. under Drive, Sta. 121+85. Sealed Line, Stas. 121+95 to 123+81 See Detail Above	
2-D	125+64	Rt.										
3-D	125+64	Rt.										
4-D	125+64	Rt.										
5-D	127+03	Rt.	851	137							R.C.P. under Drives, Stas. 133+74, 135+85	
6-D	127+03	Rt.	252					40			" " " " 133+78, 136+49	
7-D	131+00	Rt.										
8-D	133+89	Rt.										
9-D	133+93	Rt.										
10-D	135+73	Rt.										
11-D	136+00	Rt.										
12-D	136+64	Rt.										
13-D	143+5	Rt.										
14-D	143+05	Rt.			177						Connect Double G' V.S.P. Sealed Joints	
15-D	144+84	Rt.										
16-D	144+84	Rt.			1111			20			Sealed Joints	
17-D	146+00	Rt.										
18-D	146+00	Rt.	398									
19-D	146+70	Rt.										
20-D	150+00	Rt.										
21-D	150+00	Rt.	613									
TOTALS			2449	851	137	186	1288	60	20	40		

TRENCH REINFORCING STEEL				
Station	No.	Size	Length	Wt.
127+03	39	3/8"	5'-0"	203
TOTAL				203

SIDE APPROACHES				
Item No.	Station	Rt. or Lt.	Stone	2" R.C.P. Lin. Ft.
1-A	121+60	Rt.	4.5	
2-A	121+85	Rt.	4.0	20
3-A	121+85	Lt.	4.0	20
4-A	122+08	Rt.	4.5	
5-A	123+68	Lt.	4.0	20
6-A	133+74	Rt.	4.0	
7-A	133+78	Lt.	4.0	
8-A	135+85	Rt.	4.0	
9-A	136+41	Rt.	4.0	
10-A	136+49	Lt.	4.0	
11-A	137+11	Rt.	4.0	
12-A	138+30	Rt.	32.0	
13-A	138+90	Rt.	4.0	
14-A	140+44	Lt.	4.0	
15-A	141+81	Rt.	4.0	
16-A	146+85	Rt.	4.0	
TOTAL			93.0	40

FRENCH DRAINS				
From Station	To Station	Rt. or Lt.	Lin. Ft.	
121+50	151+50	Lt.	465	
123+00	136+00	Rt.	210	
145+00	152+00	Rt.	120	
TOTAL			795	



Excavation	787	Cu. Yds.
Embankment	535	" "
" +20%	642	" "
Surplus (Inc. Ch. Excav.)	172	" "

Excavation	928	Cu. Yds.
Embankment	306	" "
" +2.0%	367	" "
Surplus	561	" "

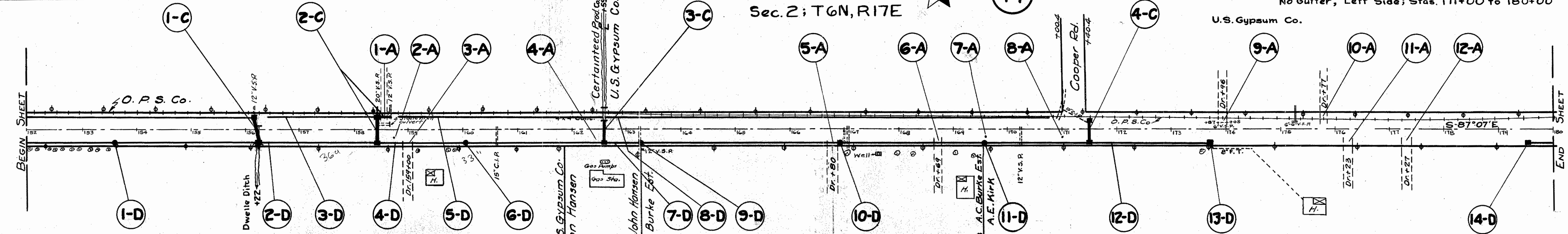
Excavation	915	Cu. Yds.
Embankment	387	" "
" +20%	464	" "
Surplus	451	" "

FED. RD. DIST. NO.	STATE	FED. AID PROJECT	FISCAL YEAR
10	OHIO		1934

7
30

S.H. No. 569 SEC. A, B, Pts.
OTTAWA COUNTY.

Item No.	Station	TYPE	Size	Removals		Excavation		Pipe, -Lin. Ft.				Catch Basins				Headwall		Remarks		
				Concrete Ca. Yds.	Stone Masonry	Cu. Yds.	Cu. Yds.	R.C.P. (a)		R.C.P. (b)		1-2	1-4	2-2	Spec.	S.D. Inlet Cover and Anchor	Dowel Holes Each		Concrete Reinforcing Cu. Yds.	Lbs.
								12"	18"	30"	12"									
1-C	156+18.5	S-27	12"x48"	18		10	20	48'			8	1	1			2.7	48	Remove Headwalls, Top, and West Wall of Old Box Culvert. Build 1 Std. R.C. Headwall and Place 2 Lengths 39' R.C.P. for Outlet to Ditch.		
2-C	158+42	S-27	18"x47"	4		30	27	47			22	1	1					Remove Headwalls and Top of Old Arch Culvert to 3 ft. above Flow Line. Connect North Catch Basin with Existing 20" V.S.P.		
3-C	162+59	S-27	30"x44"	1		44	41	44					1	1	22	1.3	32	Remove Top of Concrete Headwall. Build Special Headwall within Old Arch. Break Opening in Top Old Culvert and Place 1 Std. S.D. Inlet. Abandon Existing 10" Cor. I.P.		
4-C	171+50	S-27	12"x42"			23	22	42												
TOTALS				19	4	107	110	90	47	44	22	8	3	2	1	1	22	4.0	80	

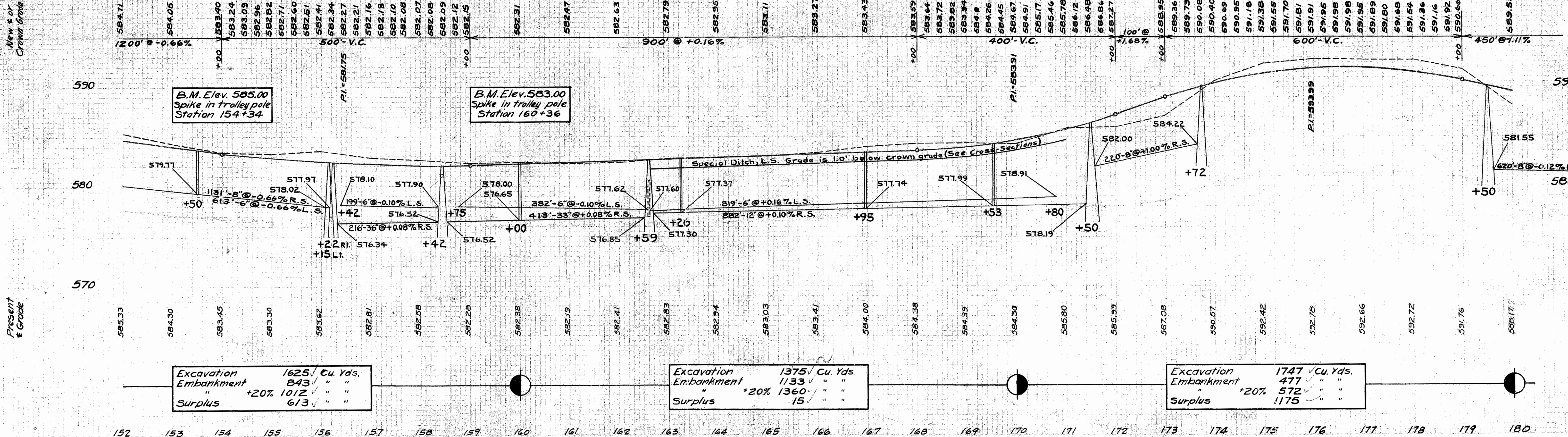


Item No.	Station From To	Rt. or Lt.	Pipe, Lin. Ft.				Special Side Ditch Inlets	Std. No. 1-2 Catch Basins Each	Remarks		
			6"	8"	12"	18"					
1-D	153+50	Rt.									
2-D	156+22	Rt.				216		Plug End, Sta. 156+42			
3-D	156+42	Lt.	199					R.C.P. under Drive, Sta. 159+00			
4-D	158+42	Rt.			393		20	Plug End, Sta. 158+75			
5-D	158+75	Lt.	382								
6-D	160+00	Rt.									
7-D	162+59	Rt.		842			40	R.C.P. under Drives, Stas. 166+8, 168+69			
8-D	162+59	Lt.	819					Plug End, Sta. 170+80			
9-D	163+26	Rt.									
10-D	166+95	Rt.									
11-D	169+53	Rt.									
12-D	171+50	Rt.	220					Connect 8" F.T. to Catch Basin			
13-D	173+72	Rt.		12							
14-D	179+50	Rt.									
TOTALS			1400	232	842	393	216	40	20	5	2

TRENCH REINFORCING STEEL				
Station	No.	Size	Length	Wt.
156+18.5	39	7/8"	12'	490
158+42	"	"	6'	244
162+59	"	"	8'	326
171+50	"	"	5'	203
TOTAL				1263

SIDE APPROACHES			
Item No.	Station	Rt. or Lt.	Stone Cu. Yds.
1-A	158+52	Lt.	4.0
2-A	158+70	Rt.	4.5
3-A	159+00	Rt.	4.0
4-A	162+57	Rt.	52.0
5-A	166+80	Rt.	4.0
6-A	168+69	Rt.	4.0
7-A	169+60	Rt.	4.5
8-A	171+00	Rt.	4.5
9-A	173+96	Lt.	4.0
10-A	175+77	Lt.	4.0
11-A	176+23	Rt.	4.0
12-A	177+27	Rt.	4.0
TOTAL			97.5

FRENCH DRAINS			
From Station	To Station	Rt. or Lt.	Lin. Ft.
152+50	162+50	Lt.	165
153+00	161+00	Rt.	135
164+00	167+00	Rt.	60
170+00	174+00	Rt.	75
179+00	180+00	Rt.	30
TOTAL			465



Excavation	1625	Cu. Yds.
Embankment	843	"
Surplus	613	"

Excavation	1375	Cu. Yds.
Embankment	1133	"
Surplus	15	"

Excavation	1747	Cu. Yds.
Embankment	477	"
Surplus	1175	"

FED. RD. DIST. NO.	STATE	FED. AID PROJECT	FISCAL YEAR
10	OHIO		1934

8
30

S. H. No. 569 SEC. A, B, Pts.
OTTAWA COUNTY.

STRUCTURES 20' SPAN AND UNDER

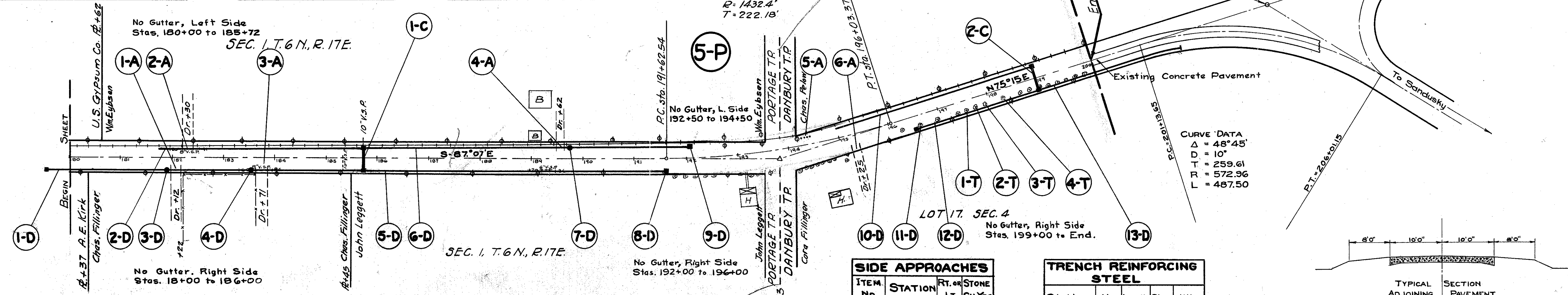
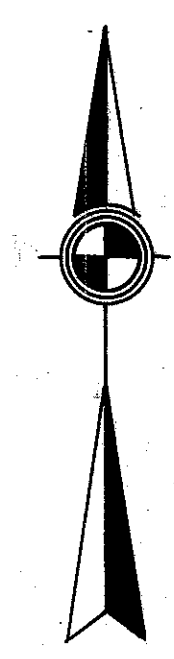
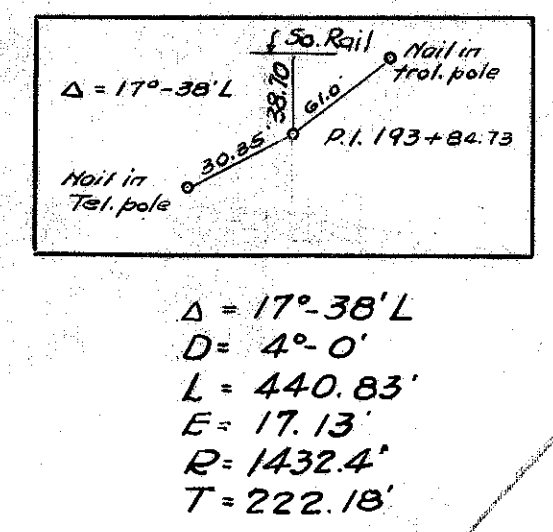
ITEM No.	STATION	TYPE	SIZE	EXCAVATION Cu. Yds.	SCREENINGS BACKFILL Cu. Yds.	PIPE 12" R.C.P. LIN. FT.	STD. NO. 1-2 C. BASIN EACH
1-C	185+72	S-27, PIPE CULVERT	12"x44"	20	19	44	2
2-C	199+00	S-27, PIPE CULVERT	12"x48"	21	20	48	2
TOTALS				41	39	92	4

TREE REMOVALS

ITEM No.	STATION	RT. OR LT.	SIZE	DIST. OUT
1-T	197+53	Rt.	9"	19.7'
2-T	197+71	Rt.	9"	19.5'
3-T	197+90	Rt.	9"	20.0'
4-T	198+27	Rt.	9"	19.3'
TOTAL No. = 4				

FRENCH DRAINS

FROM STATION	TO STATION	RT. OR LT.	LIN. FT.
181+00	191+00	Rt.	165
185+50	187+50	Lt.	45
195+50	199+50	Lt.	75
197+00	200+00	Rt.	60
TOTAL			345



ROADWAY DRAINAGE

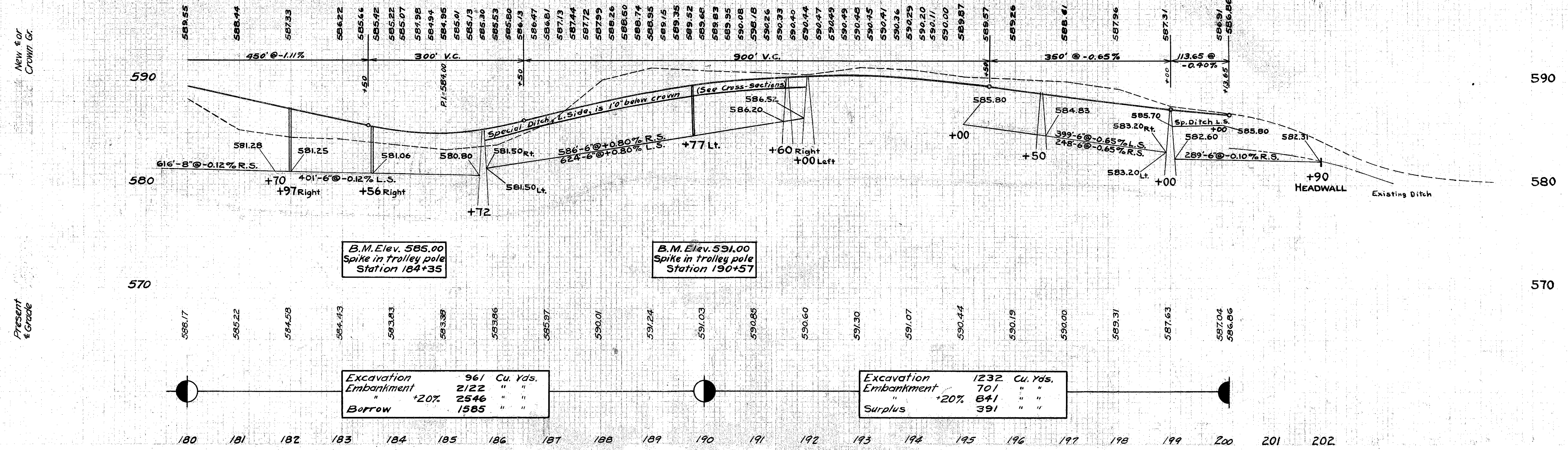
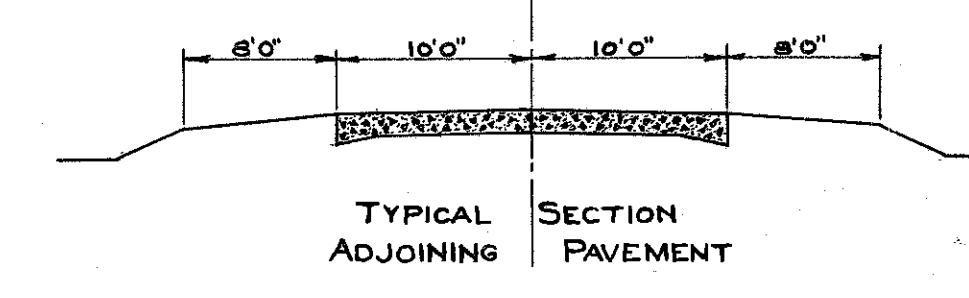
Item No.	Station From To	Rt. or Lt.	Pipe, Lin. Ft.		Special Side Ditch Inlets	Std. No. 1-2 Catch Basins Each	Headwalls 1-5/2 Steel Lbs.	Remarks			
			Extra Quality Drain 6"	Tile 8"							
1-D	179+50 185+72	Rt.	576	40			R.C.P. under Drive, Stas. 182+12, 183+71				
2-D	181+70 185+72	Lt.	381	20			R.C.P. under Drive, Sta. 182+30. Plug End.				
3-D	181+97	Rt.									
4-D	183+56	Rt.									
5-D	185+72 191+60	Rt.	586								
6-D	185+72 192+00	Lt.	604	20			R.C.P. under Drive, Sta. 189+62				
7-D	189+77	Lt.									
8-D	191+60	Rt.									
9-D	192+00	Lt.									
10-D	195+00 199+00	Lt.	399				Plug End. Sta. 195+00.				
11-D	196+50	Rt.									
12-D	196+50 199+00	Rt.	248								
13-D	199+00 201+90	Rt.	289			0.65	20	Build Std. R.C. Headwall, Sta. 201+90			
TOTALS			2507	576	40	40	3	3	0.65	20	

SIDE APPROACHES

ITEM No.	STATION	RT. OR LT.	STONE Cu. Yds.
1-A	182+12	Rt.	4.0
2-A	182+30	Lt.	4.0
3-A	183+71	Rt.	4.0
4-A	189+62	Lt.	4.0
5-A	194+25	Lt.	4.5
6-A	195+25	Rt.	4.0
TOTAL			24.5

TRENCH REINFORCING STEEL

Station	No.	Length	Size	Wt.
185+72	39	5'-0"	3/8"	203
199+00	"	5'-0"	"	203
TOTAL				406



B.M. Elev. 585.00
Spike in trolley pole
Station 184+35

B.M. Elev. 591.00
Spike in trolley pole
Station 190+57

B.M. Elev. 590.00
Spike in trolley pole
Sta. 196+09

B.M. Elev. 588.00
Spike in trolley pole
Sta. 200+12

Excavation	961	Cu. Yds.
Embankment	2122	" "
" +20%	2546	" "
Borrow	1585	" "

Excavation	1232	Cu. Yds.
Embankment	701	" "
" +20%	841	" "
Surplus	391	" "