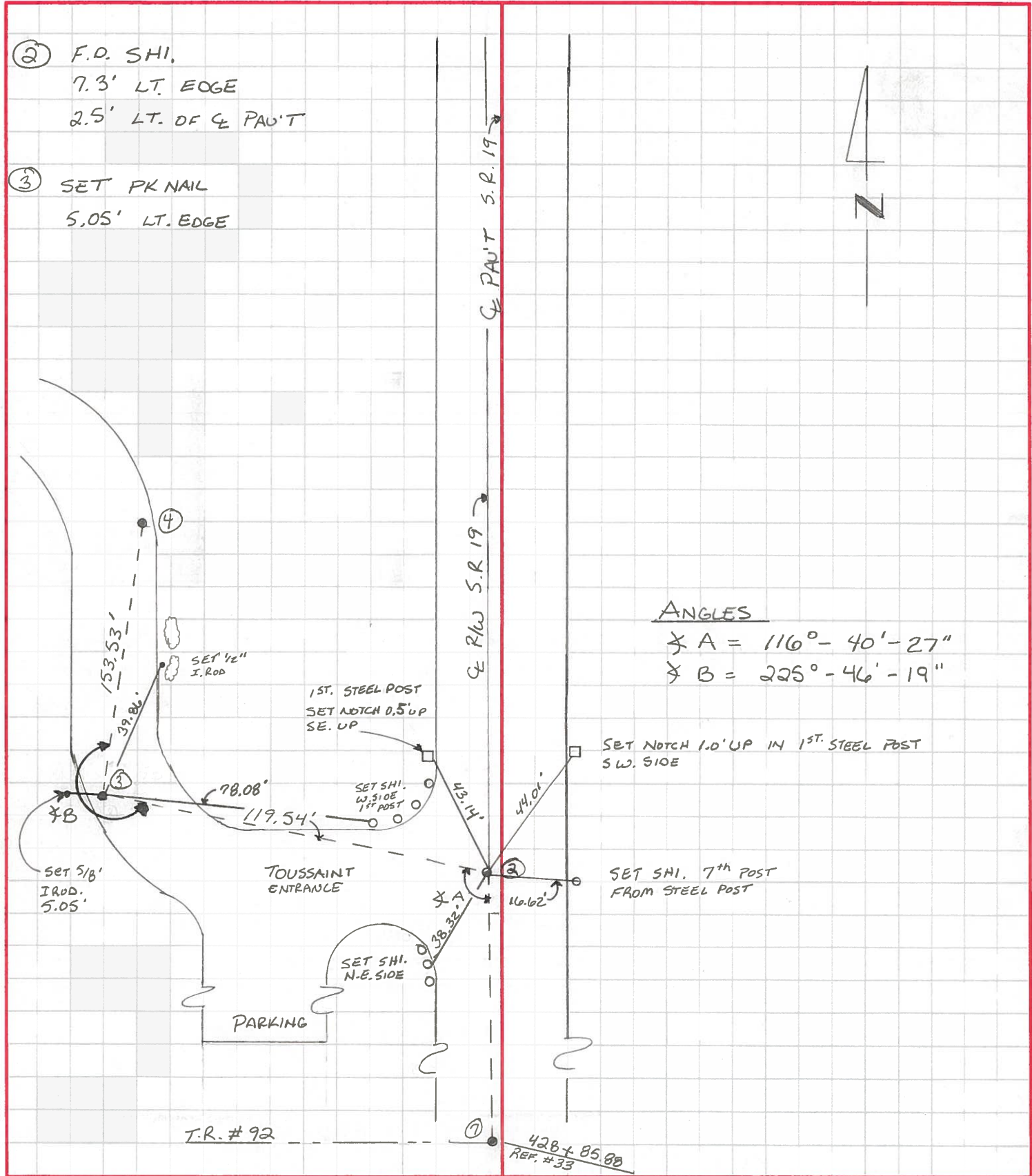


PERSONNEL	TITLE	PERSONNEL	TITLE	COUNTY	DATE
VAN DUSEN				OTTAWA	5-17-96
MOSER				S.R. 19	
HUSS				S. R. TOUSSAINT WILDLIFE AREA	WEATHER OVERCAST
				SEC. 8.4±	TEMP. +50°F

DESCRIPTION NEW REF. TIES FOR CONTROL POINTS JOB NO. _____

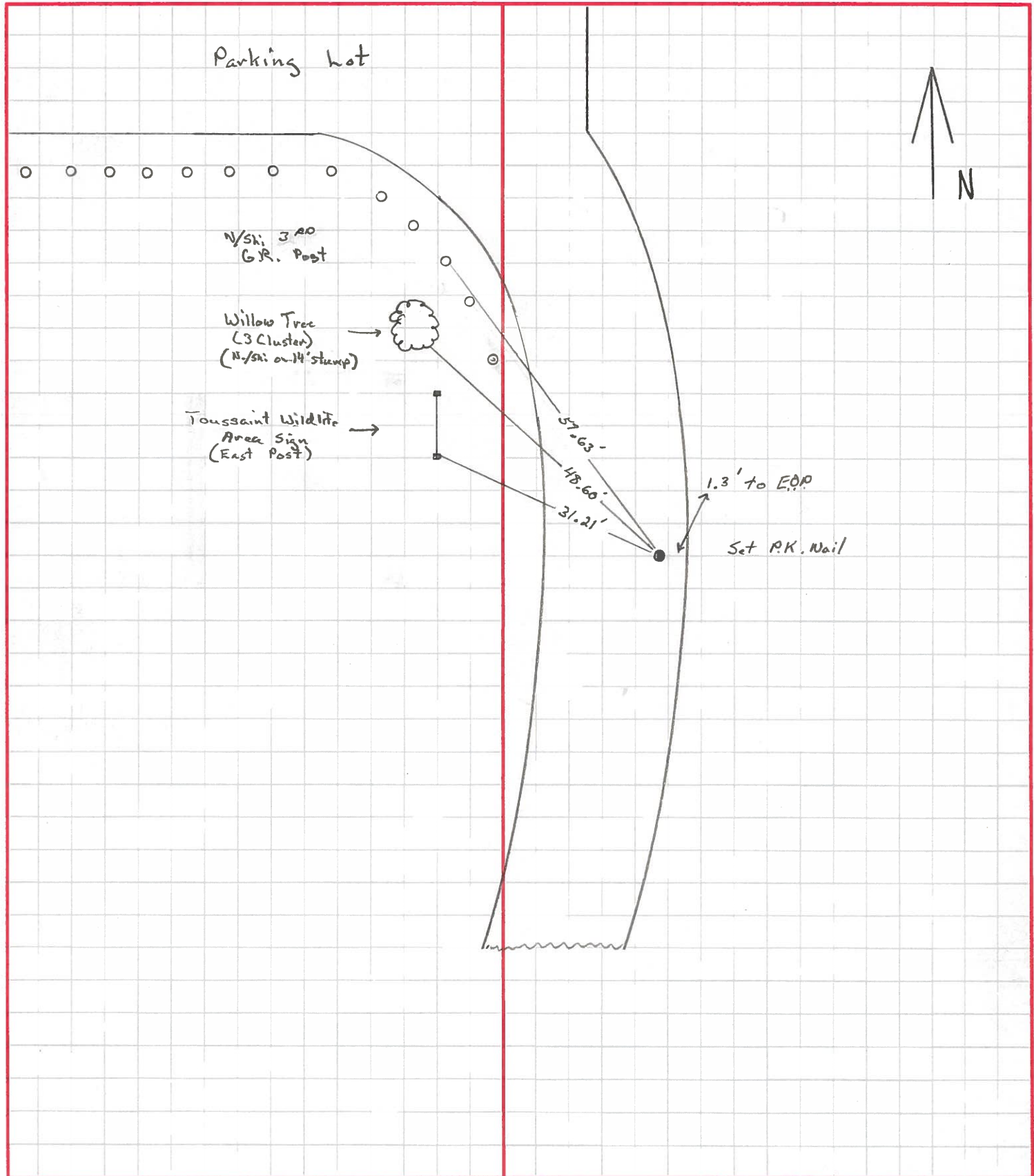
LEFT CENTER LINE RIGHT



PERSONNEL	TITLE	PERSONNEL	TITLE	COUNTY	DATE
Van Dusen	H.C.			Ottawa	5-17-96
Moser	R.C.			S. R. Toussaint Wildlife Area	WEATHER Cldy - Rain
Huss	Notes			SEC. 8.4 ±	TEMP. +51°F

DESCRIPTION New Ref Ties 2+73.07 JOB NO. _____

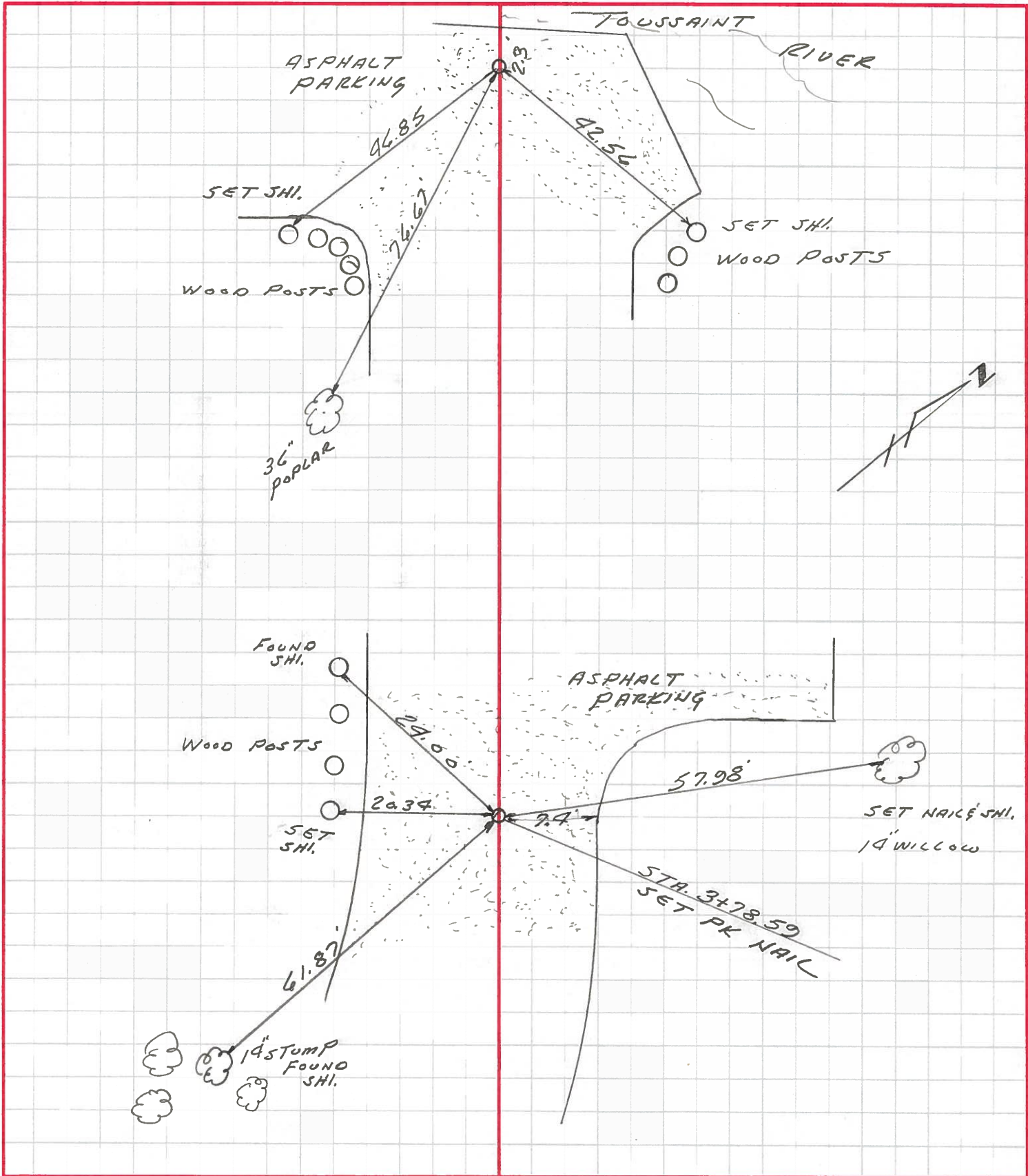
LEFT CENTER LINE RIGHT



PERSONNEL	TITLE	PERSONNEL	TITLE
VAN DUSEN			
MOSEY			
HUSS			

COUNTY OTTAWA DATE 5-17-96
 S. R. TOUSSAINT WILDLIFE WEATHER OVERCAST
 AREA
 SEC. 8.4 TEMP. +50° F

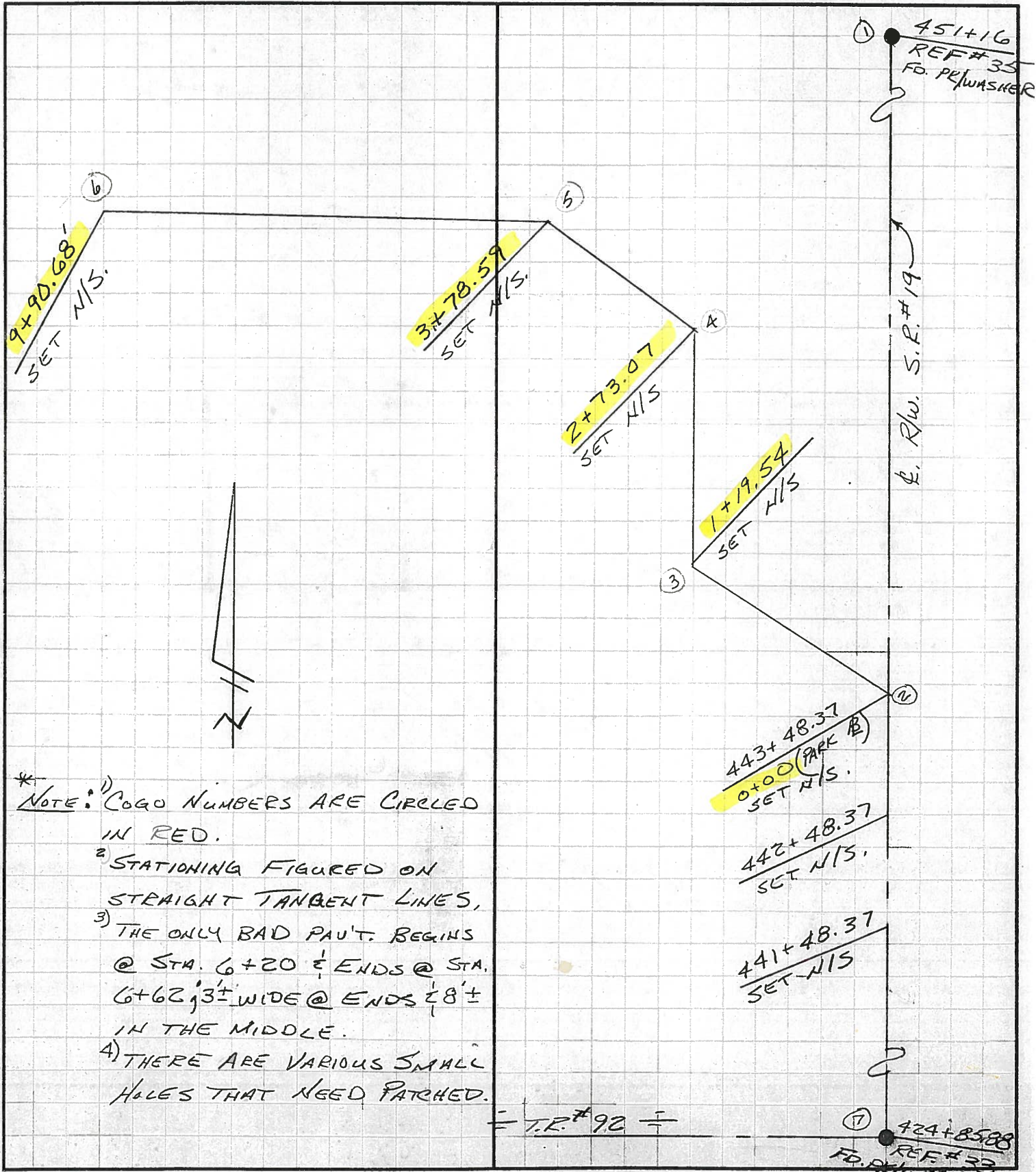
DESCRIPTION NEW REF. TIES STA. 3+78.59 - 9+90.68 JOB NO. _____
 LEFT CENTER LINE RIGHT



PERSONNEL	TITLE	PERSONNEL	TITLE	COUNTY	DATE
CHENEY	∇			OTAWA	2-7-1994
RIPPLE	∇			S. R. #19	WEATHER FAIR
GEYMAN	ϕ			TOUSSAINT WILDLIFE AREA 8.4±	TEMP. 20°

DESCRIPTION ∇ ALIGNMENT - TOUSSAINT WILDLIFE AREA JOB NO. 026112-62

LEFT CENTER LINE RIGHT



- * NOTE: 1) COGO NUMBERS ARE CIRCLED IN RED.
- 2) STATIONING FIGURED ON STRAIGHT TANGENT LINES.
- 3) THE ONLY BAD PAVT. BEGINS @ STA. 6+20 & ENDS @ STA. 6+62, 3'± WIDE @ ENDS & 8'± IN THE MIDDLE.
- 4) THERE ARE VARIOUS SMALL HOLES THAT NEED PATCHED.

± T.R.#92 ±

PERSONNEL	TITLE	PERSONNEL	TITLE	COUNTY	<u>OTAWA</u>	DATE	<u>2-7-1994</u>
<u>CHELEY</u>	<u>M</u>			S. R.	<u>#19</u>	WEATHER	<u>FAIR</u>
<u>RIPPLE</u>	<u>T</u>			SEC.	<u>TOUSSAINT WILDLIFE</u>	TEMP.	<u>20°</u>
<u>GEYMAN</u>	<u>φ</u>			AREA	<u>8.4±</u>		

DESCRIPTION ANGLES & DISTANCES ALIGNMENT JOB NO. 026112-62

LEFT CENTER LINE RIGHT

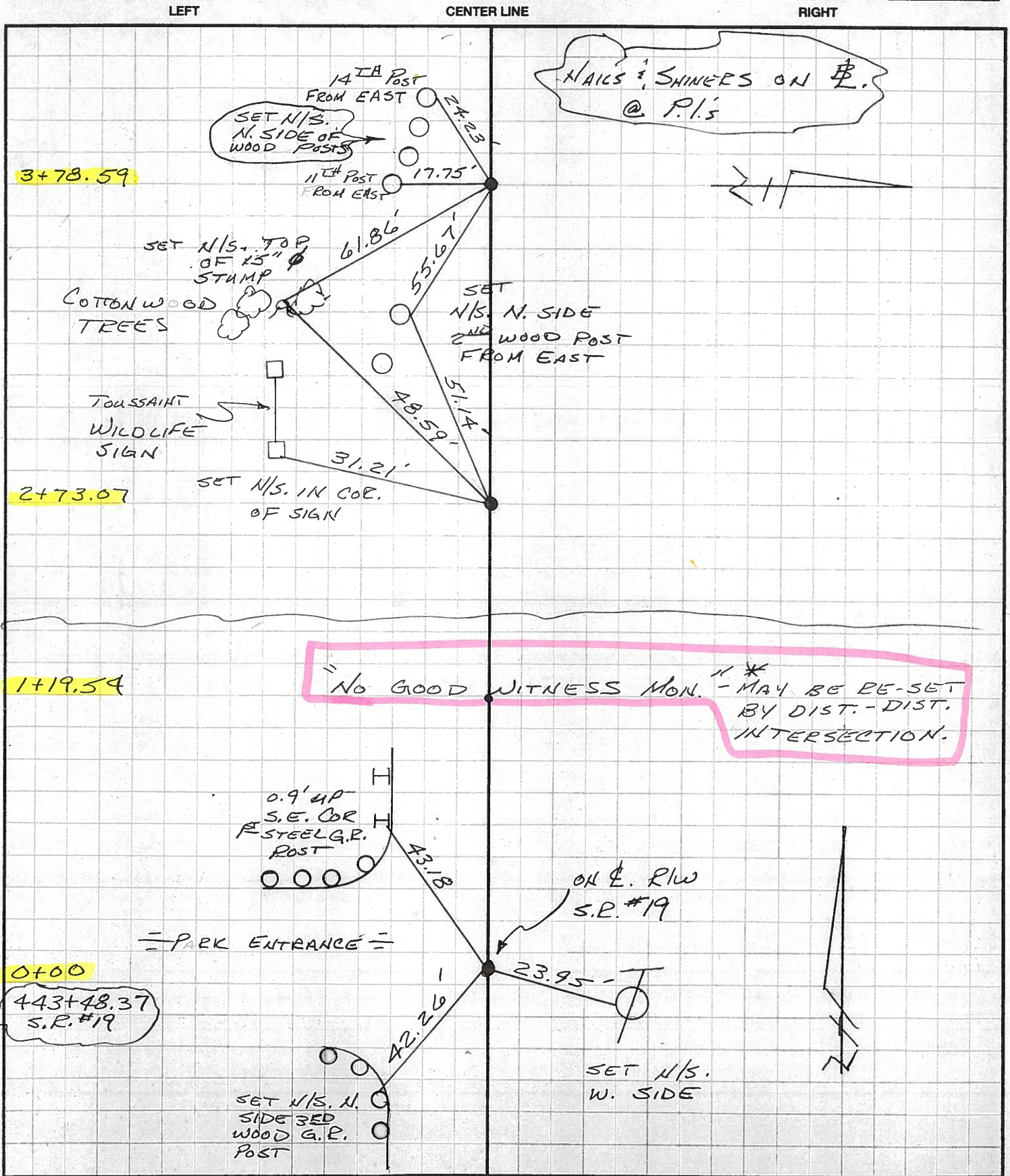
COURSE	DISTANCE		ANGLE	RIGHT
2-1	1) 767.63'	2) 767.64' <u>767.63'</u>		
	3) 767.63'			
	4) 767.62'			
2-3	1) 119.54'		7-2-3 =	1) 116-40-27
	2) 119.54'			2) 233-20-52
	3) 119.54'			M) 116-40-26
3-4	153.53' TAPED		2-3-4 =	1) 225-46-24
				2) 91-32-38
				M) 225-46-19
4-5	105.52' TAPED		3-4-5 =	1) 138-03-44
				2) 276-07-31
				M) 138-03-45
5-6	1) 612.10'	2) 612.08'	4-5-6 =	1) 134-42-37
	3) 612.08' <u>612.09'</u>			2) 269-25-13
	4) 612.10'			M) 134-42-37
	5) 612.08'			

PERSONNEL	TITLE	PERSONNEL	TITLE
CHENEY			
RIPPLE	H. TAPE		
GEYMAN	R. TAPE		

COUNTY OTTAWA DATE 2-15-1994
 S. R. #19 WEATHER FAIR
 SEC. TOUSSAINT WILDLIFE-8.4 TEMP. 40°

DESCRIPTION P.I. REFERENCES

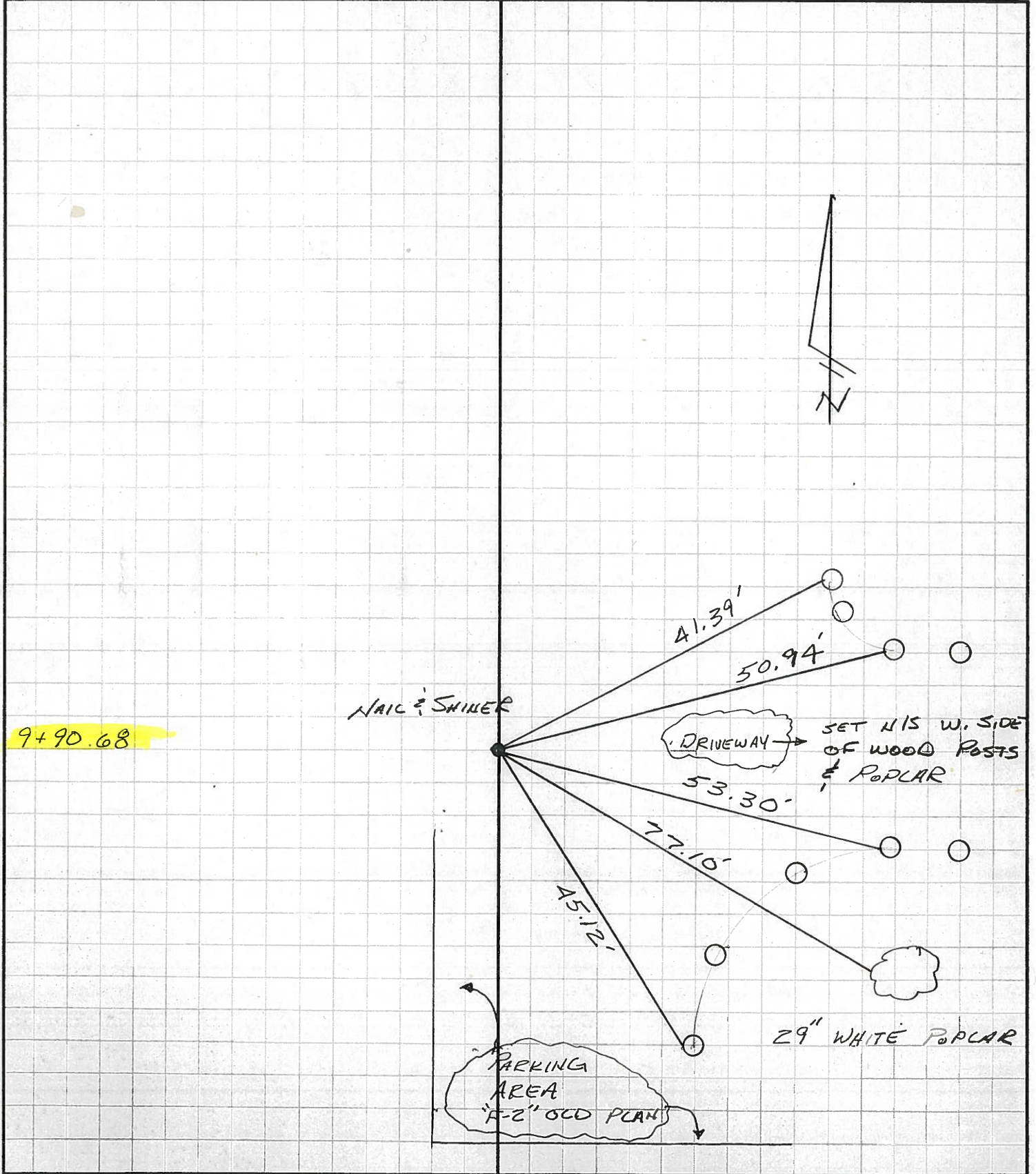
JOB NO. 026112-62



PERSONNEL	TITLE	PERSONNEL	TITLE
CHENEY	SI		
RIPPLE	H. TAPE		
GEYMAN	L. TAPE		

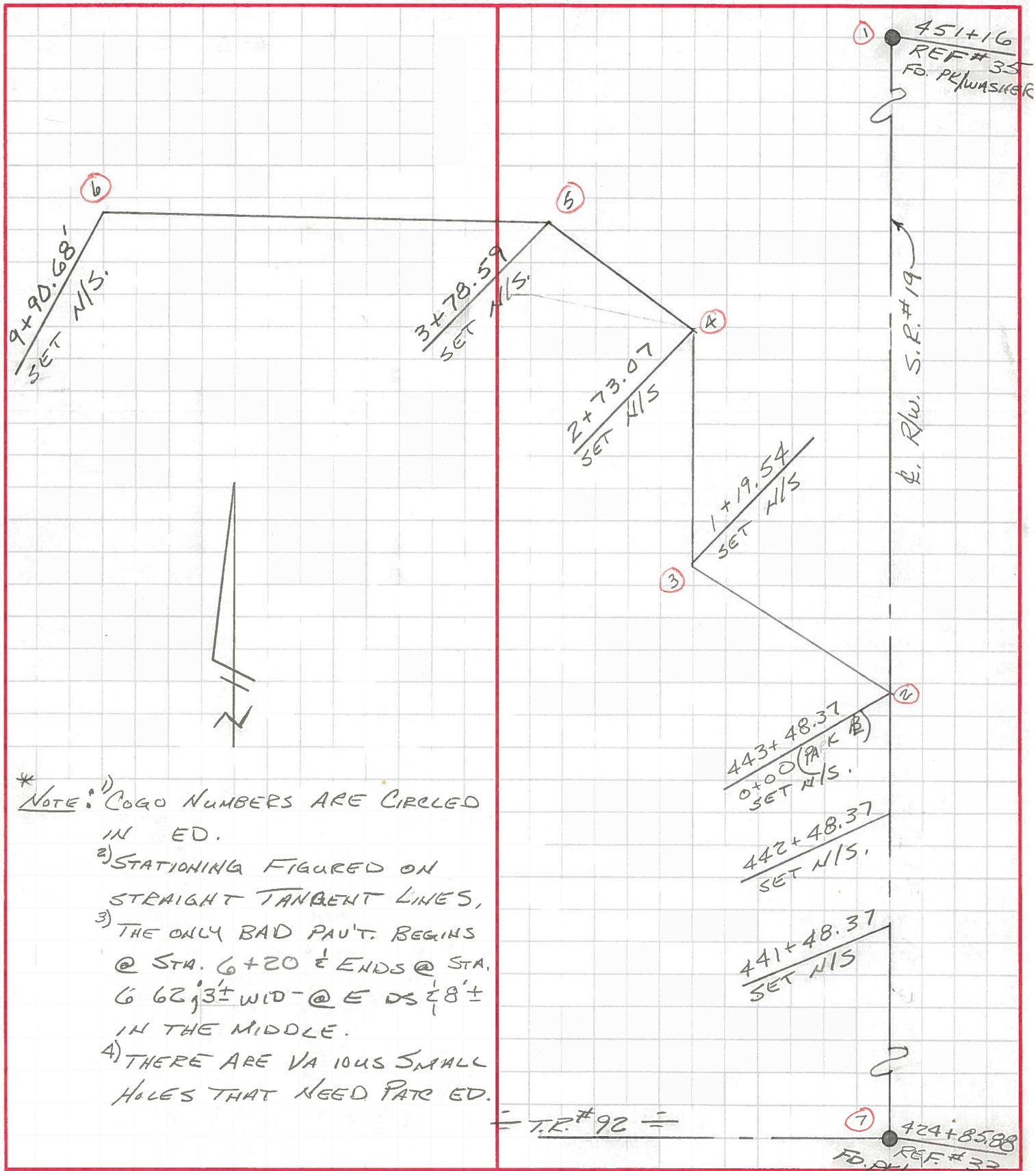
COUNTY OTTAWA DATE 2-15-1994
 S. R. #19 WEATHER FAIR
 SEC. TOUSSAINT WILDLIFE 8.4+ TEMP. 40

DESCRIPTION P.I. REFERENCES JOB NO. 026112-62
 LEFT CENTER LINE RIGHT



PERSONNEL	TITLE	PERSONNEL	TITLE	COUNTY	DATE
CHENEY				OTAWA	2-7-1994
RIPPLE				S. R. #19	WEATHER FAIR
GEYMAN				TOUSSAINT WILDLIFE AREA 8.4±	TEMP. 20°

DESCRIPTION ALIGNMENT - TOUSSAINT WILDLIFE AREA JOB NO. 026112-62



* NOTE: 1) COGO NUMBERS ARE CIRCLED IN ED.
 2) STATIONING FIGURED ON STRAIGHT TANGENT LINES,
 3) THE ONLY BAD PAVT. BEGINS @ STA. 6+20 & ENDS @ STA. 6 62; 3± WID - @ E DS 8± IN THE MIDDLE.
 4) THERE ARE VARIOUS SMALL HOLES THAT NEED PATCHED.

PERSONNEL TITLE PERSONNEL TITLE COUNTY OTAWA DATE 2-7-1994

CHENEY M

RIPPLE T

GEYMAN P

S. R. #19 WEATHER FAIR

TOUSSAINT WILDLIFE

SEC. AREA 8.4± TEMP. 20°

DESCRIPTION ANGLES & DISTANCES #. ALIGNMENT JOB NO. 026112-62

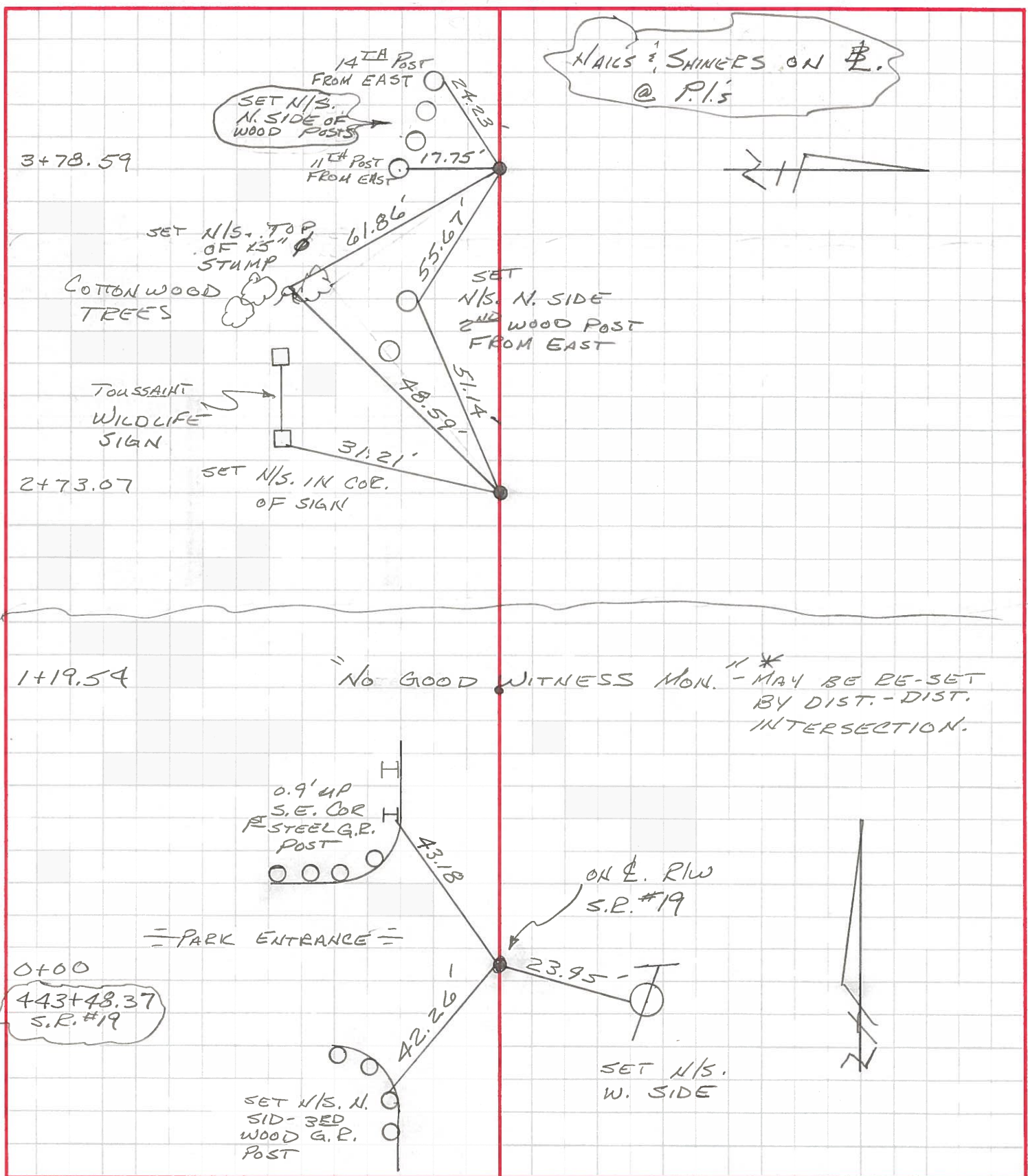
LEFT CENTER LINE RIGHT

COURSE	DISTANCE	ANGLE	RIGHT
2-1	1) 767.63' 2) 767.64' <u>767.63'</u> 3) 767.63' 4) 767.62'		
2-3	1) 119.54' 2) 119.54' 3) 119.54'	7-2-3 =	1) 116-40-27 2) 233-20-52 M) 116-40-26
3-4	153.53' TAPED	2-3-4 =	1) 225-46-24 2) 91-32-38 M) 225-46-19
4-5	105.52' TAPED	3-4-5 =	1) 138-03-44 2) 276-07-31 M) 138-03-45
5-6	1) 612.10' 2) 612.08' 3) 612.08' <u>612.09'</u> 4) 612.10' 5) 612.08'	4-5-6 =	1) 134-42-37 2) 269-25-13 M) 134-42-37

PERSONNEL	TITLE	PERSONNEL	TITLE
CHEHEY			
RIPPLE	H. TAPE		
GEYMAN	P. TAPE		

COUNTY OTTAWA DATE 2-15-1994
 S. R. #19 WEATHER FAIR
 SEC. TOUSSAINT WILDLIFE-84 TEMP. 40°

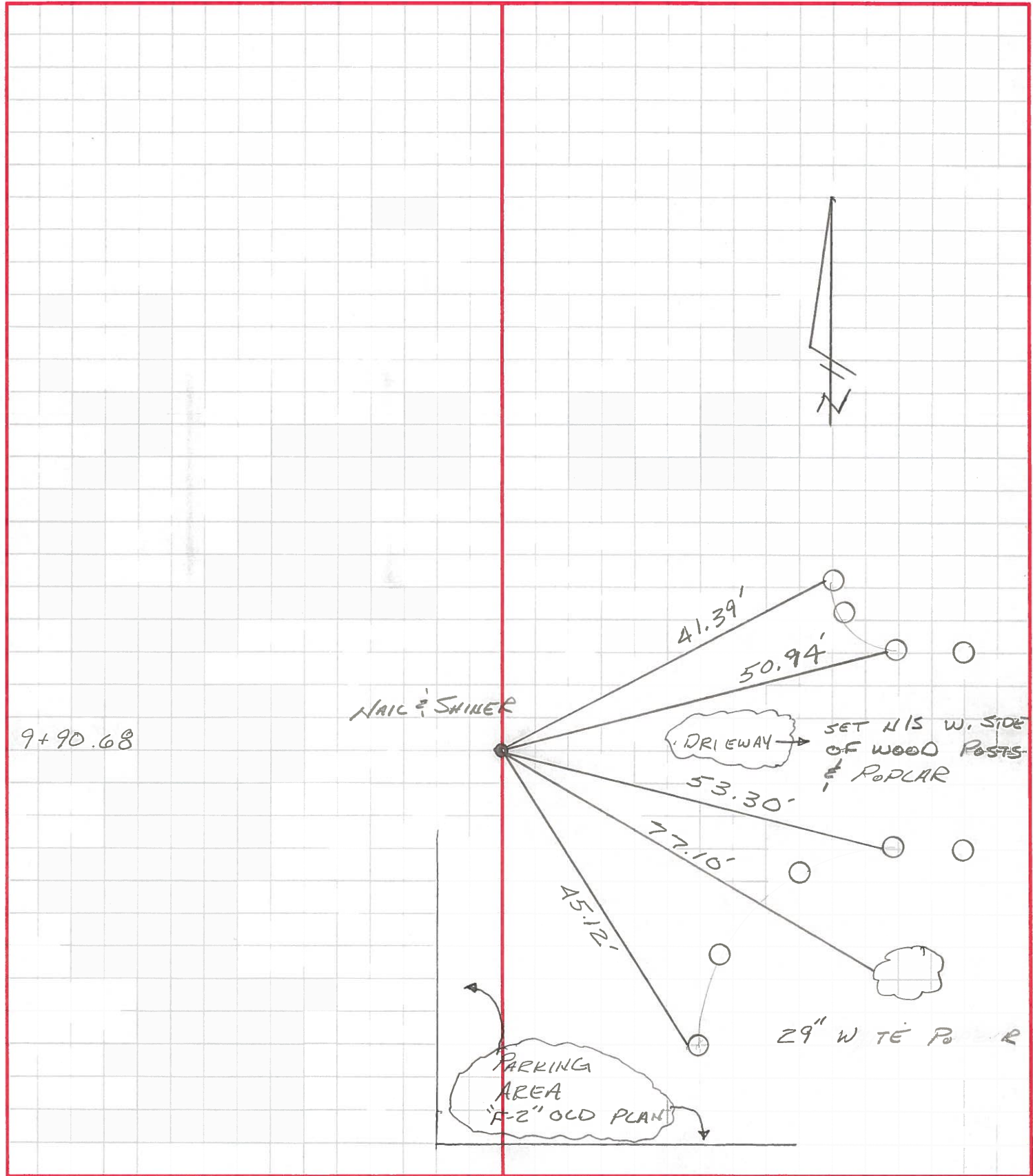
DESCRIPTION P.I. REFERENCES JOB NO. 026112-62



PERSONNEL	TITLE	PERSONNEL	TITLE
CHENEY	SI		
RIPPLE	H. TAPE		
GEYMAN	R. TAPE		

COUNTY OTTAWA DATE 2-15-1994
 S. R. #19 WEATHER FAIR
 SEC. TOUSSAINT WILDLIFE 8.4+ TEMP. 40

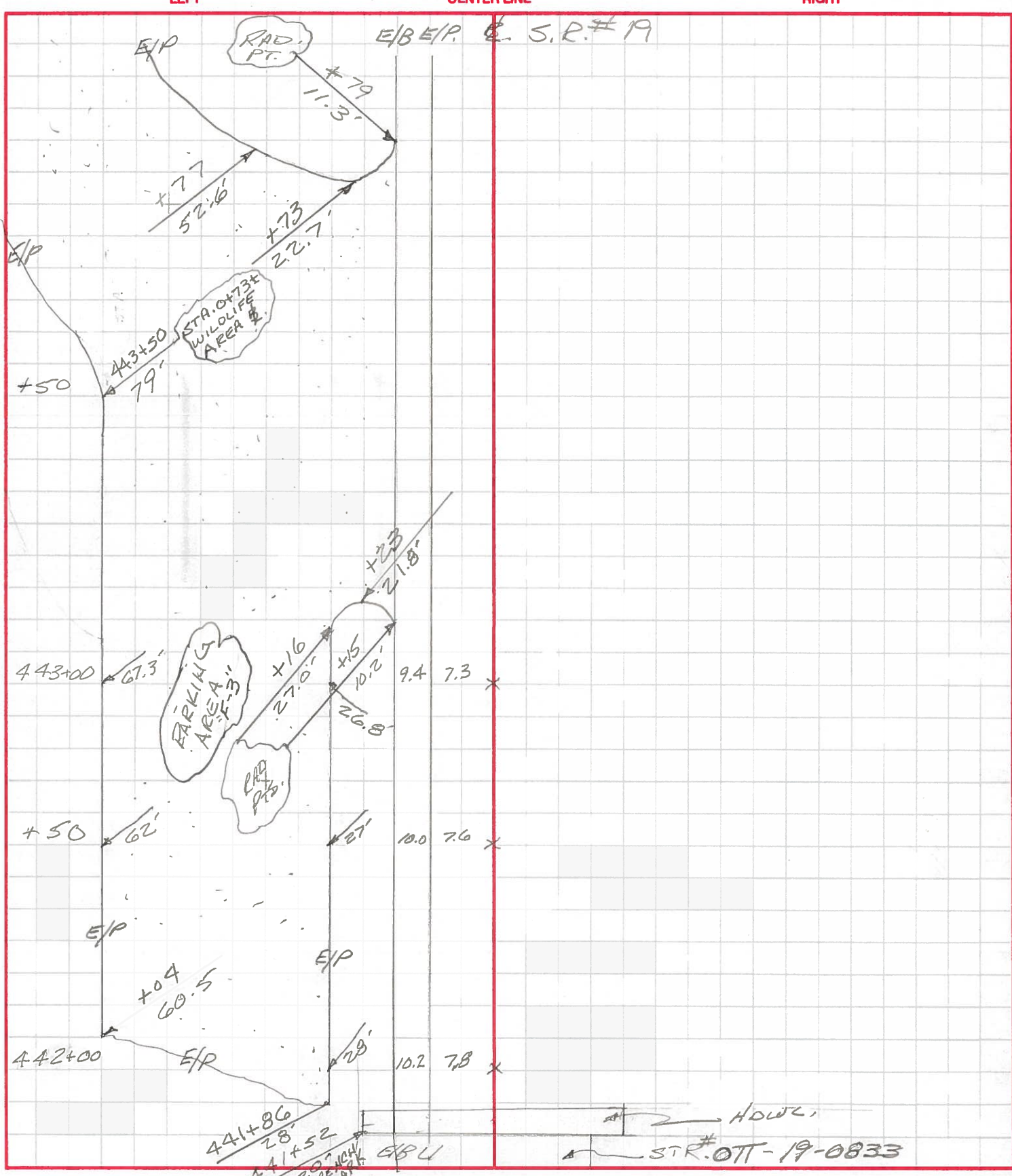
DESCRIPTION P.I. REFERENCES JOB NO. 026112-62
 LEFT CENTER LINE RIGHT



PERSONNEL	TITLE	PERSONNEL	TITLE
CHENEY			
R. PPLE	H. TAPE		
GEYMAN	E. TAPE		

COUNTY OTTAWA DATE 2-22-1994
 S. R. # 19 WEATHER OVERCAST
 SEC. TOUSSAINT WILDLIFE AREA 8.4% TEMP. 30°

DESCRIPTION TOPO - PAV'T. - S.R. # 19 JOB NO. 026112-62



PERSONNEL TITLE PERSONNEL TITLE COUNTY OTTAWA DATE 2-22-1994
CHENEY [Signature] S. R. #19 WEATHER OVERCAST
RIPPLE H. TAPE TOUSSAINT WILDLIFE WEATHER OVERCAST
GEYMAN R. TAPE AREA 8.4'± TEMP. 30°

DESCRIPTION TOPO PART - WILDLIFE AREA # JOB NO. 026112-62

LEFT	CENTER LINE	RIGHT
	E/P	E/P
3+78.59 (BACK TAN)	14.0 x 7.0	
3+75	12.5 x 8.0	
3+50	7.0 x 11.5	
3+25	4.5 x 12.5	
3+00	7.0 x 9.5	
2+73.87 (FWD. TAN)	18.0 x 2.0	
2+73.07 (BACK TAN)	17.5 x 1.5	
2+50	11.5 x 7.5	
2+25	9 x 9.5	
2+00	9.0' x 11.0'	
1+25	3. x 13.0	
1+19.54 (FWD. TAN)	2.5 x 13.5	
1+19.54 (BACK TAN)	3.0 x 14.5	
1+00	11.0 x 8.0	
0+75 E/P	30.0 x 4.0	
0+50	x 6.0	
0+25	x 4.0'	E/P

*PARKING LOCATED
 AREA OFF S.R. #19
 BASELINE
 P-3

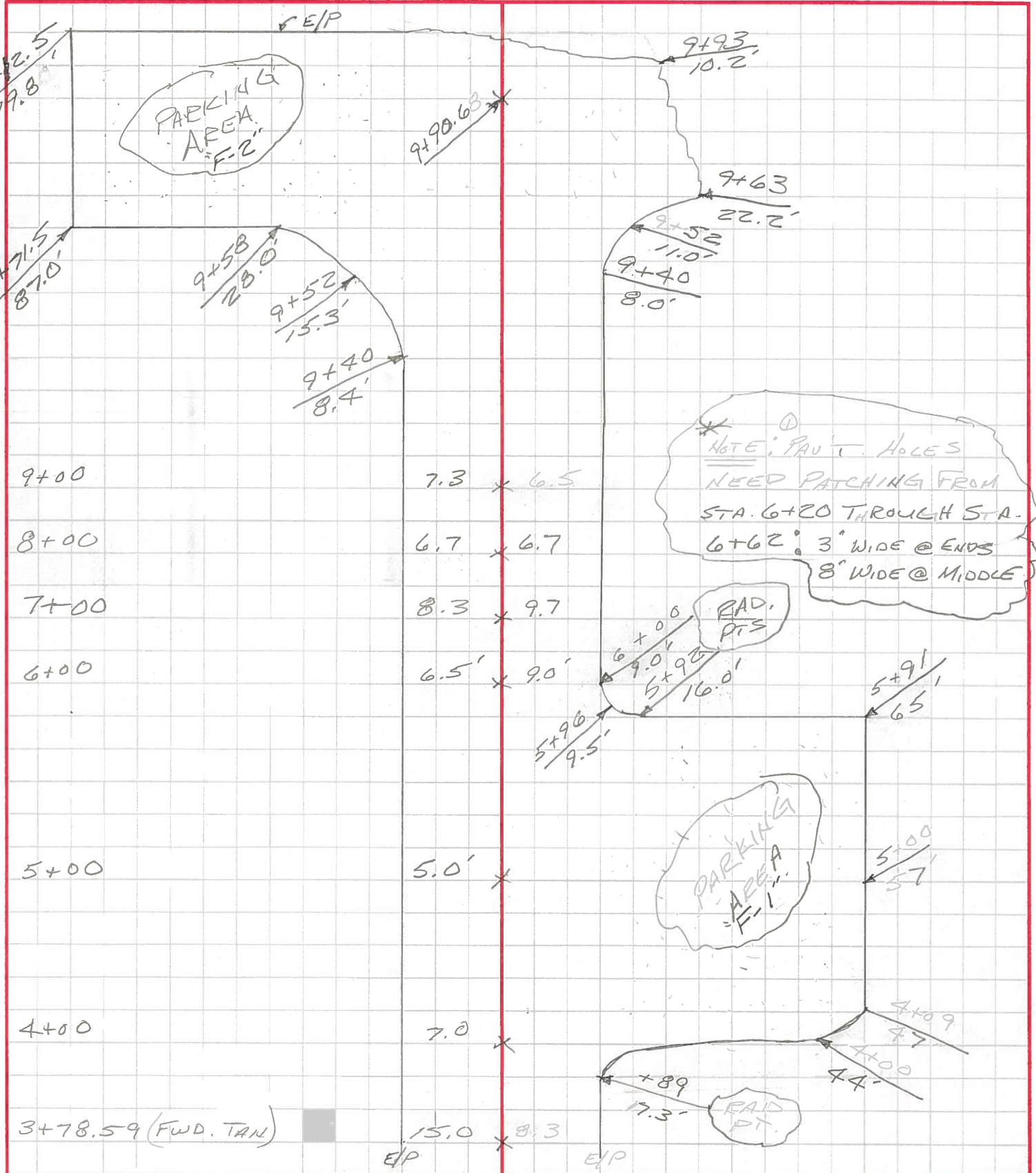
PERSONNEL	TITLE	PERSONNEL	TITLE	COUNTY	OTAWA	DATE	2-22-1994
CHENEY	<i>[Signature]</i>			S. R.	#19	WEATHER	OVERCAST
RIPPLE	H. TAPE			SEC.	TOUSSAINT WILDLIFE AREA 8.4 ±	TEMP.	30°
GREYMAN	R. TAPE						

DESCRIPTION TOPO PAU'T. WILDLIFE AREA B. JOB NO. 026112-62

LEFT

CENTER LINE

RIGHT



PERSONNEL CHENEY TITLE VT PERSONNEL _____ TITLE _____ COUNTY OTTAWA DATE 2-22-1994
 PERSONNEL RIPPLE TITLE H. TAPE PERSONNEL _____ TITLE _____ S. R. #19 WEATHER OVERCAST
 PERSONNEL GEYMAN TITLE E. TAPE PERSONNEL _____ TITLE _____ SEC. AREA TOUSSAINT WILDLIFE TEMP. 3
84±

DESCRIPTION X-SECTIONS @ ENTRANCE @ S.R. #19 JOB NO. 2-

STA.	LEFT			CENTER LINE				RIGHT
	+	H. I.		-	ELEV.			
B.M.	2.34				ASSUMED 100.00			
	FD 10" CUT, S.W. COR. OF HDWL., STR. # OT-19-0833 @ STA. 441+52, 20' CT. S.R. #19.							
442+00	5.40 54 PAVT.	5.36 28 EIP	5.2 25	2.6 16.2	2.40 10.2 E/B	2.35 7.8 E/P	2.22 0	
	PARKING AREA							
443+00	4.60 26.8 EIP	5.0 27 EIP	5.3 21	2.8 15	2.31 9.4 E/B	2.28 7.3 E/P	2.14 0	
	PARKING AREA							
	4.88 45 PAVT.	5.04 58 PAVT.	5.32 67.3 EIP	PARKING AREA				
4 3 35	5.00 62	5.08 44		4.86 26	2.30 9.2 E/B	2.19 7.3 E/P	2.02 0	DRIVE ENTRANCE TO PARK
443+50	5.10 61	5.07 42		4.63 26	2.29 9.2 E/B	2.18 7.3 E/P	1.97 0	
443+70	4.98 55	4.69 37		4.18 25	2.18 9.2 E/B	2.11 7.3 E/P	1.98 0	
B.M.				2.34	100.00	10" CUT - SEE ABOVE		

46
 2
 *
 0
 2
 3
 9
 1
 2
 0
 2
 *

12-9-93

LARRY BOARE

Toussaint Wildlife Area

- see old plan -

resurface entire area with 1 1/2" 404

repair bad pavement areas 4" 411

6" 301

1 1/2" 404

need to locate bad pavement areas & check dimensions of old plans

steep drop @ SR 19 add some wedging

get X-sections @ entrance - show to us SR 19

Roger

12-30-93

1 Draw a detailed sketch with enough measurements. SPRAY PAINT stations on pavement.

2 Tie in to SR 19 SLM with Reference stations.

3 Establish a 100.00 site B.M. for the cross-sections.

4 Locate & measure size of bad pavement areas.

ESTABLISH P.I.'S for the ALIGNMENT/stationing

By splitting the pavement.

Ref. the P.I.'S if possible.

RODS, PR/WASH. OR WHATEVER

5 TIE DIST. TO B - TO REF.

Job number - 020112-62

TOUSSAINT WILDLIFE PARK

Toussaint Wildlife Area.

12-9-93

LARRY COARE

- see old plan -

resurface entire area with 1 1/2" 404

repair bad pavement areas 4" 411

6" 301

1 1/2" 404

need to locate bad pavement areas & check dimensions
of old plans

steep drop @ SR 19 add some wedging

get x-sections @ entrance - show to us SR 19

Roger

12-30-93

1 Draw a detailed sketch with enough measurements.
spray paint stations or pavement.

2 tie in to SR 19 SLM with reference stations.

3 Establish a 100.00 site B.M. for the cross-sections.

4 locate & measure size of bad pavement areas.

ESTABLISH P.I.'S for the ALIGNMENT/stationing

By splitting the pavement.

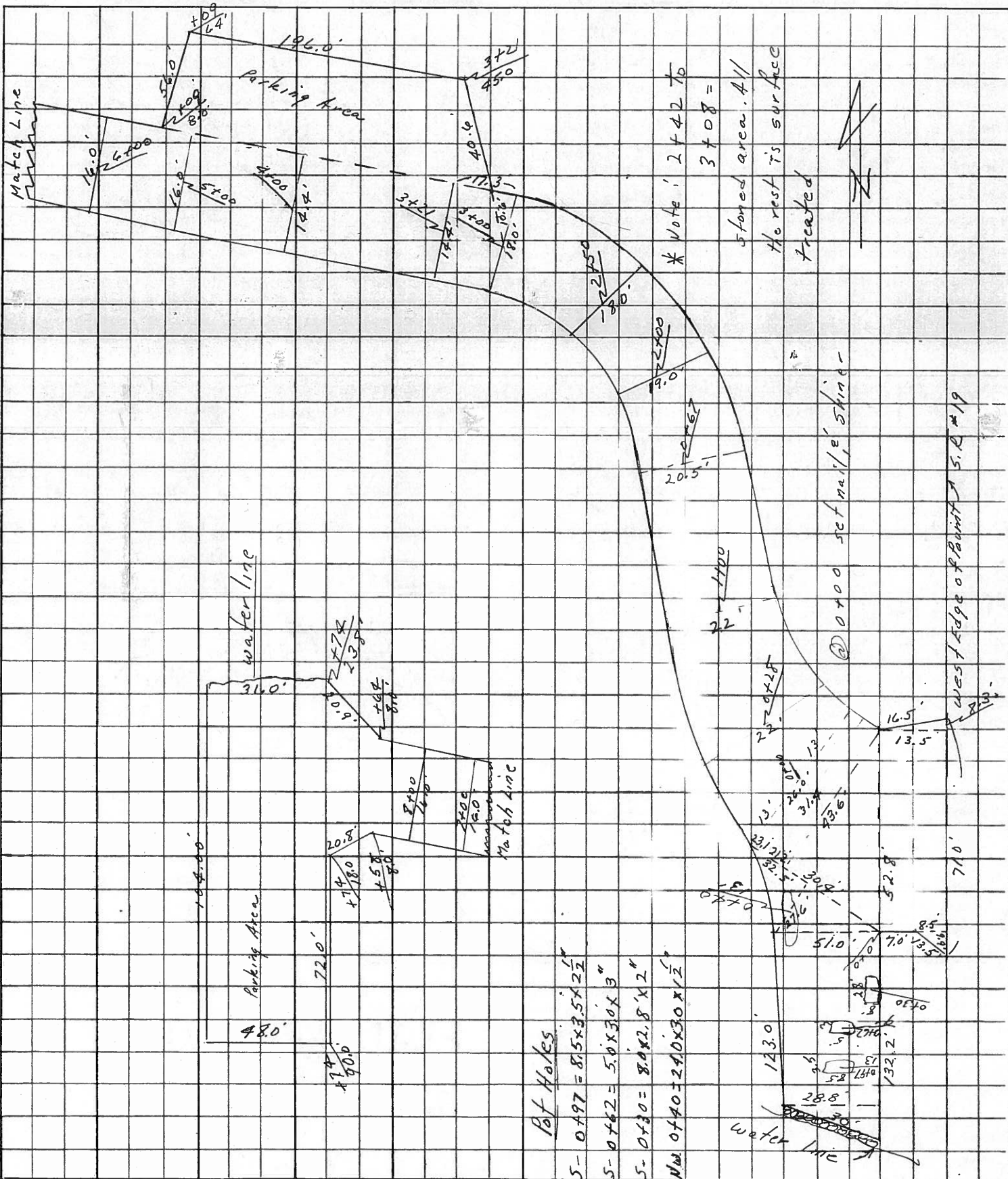
Ref. the P.I.'S if possible.

RODS, PK/WASH. OR WHATEVER

5 TIE DIST. TO B - TO REF.

Job number - 020112-62

PERSONNEL TITLE PERSONNEL TITLE COUNTY Ottawa DATE 11/21/75
 #19 WEATHER cloudy
 S. R. Wildlife Area
 SEC. Toussaint Creech TEMP. 26°
 DESCRIPTION Meas - Driv'g Parking Area to be surface treated JOB NO.



O.D.O.T. DISTRICT 2 SURVEY OFFICE

PERSONNEL

REFERENCE NO. 33

SHEET 6 OF 11

NOTES CHEHEY

H.C. BARBOUR

DATE 10-10-1991

ROUTE 19

R.C. RIPPLE

WEATHER CLOUDY

COUNTY OTTAWA

TEMP. 60°

TOWNSHIP CARROLL

SECTION 8, 9, 16, 17

T. 7 N. 1 R. 1 S. 5 E

TYPE MONUMENT RE-SET PK/WASHER

ON SURFACE - BELOW

~~EST~~ - E PAV'T. - RIGHT

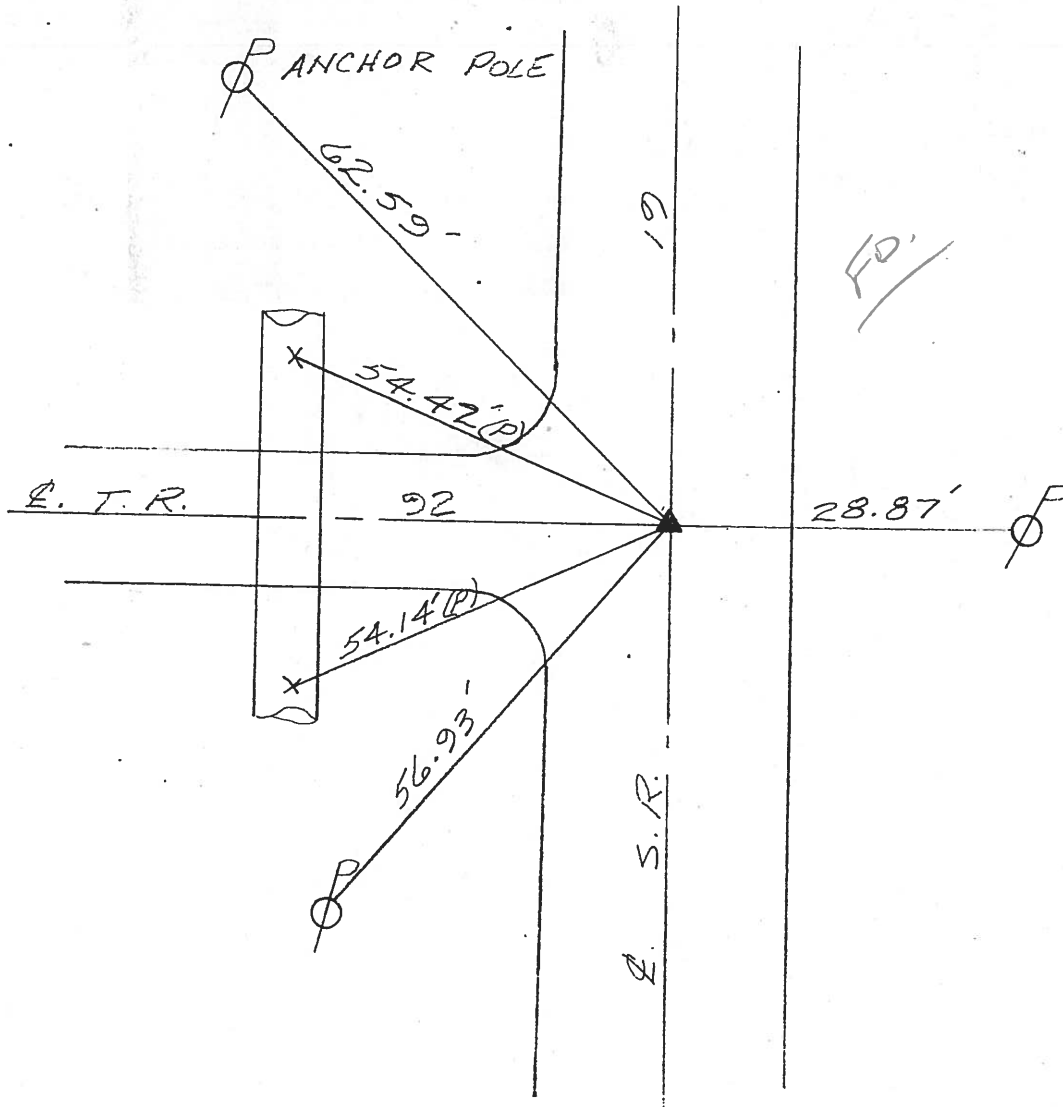
10' TO W. EDGE PAVEMENT

S.L.M. 424+85.88 (RECORD STA.)

8	9
17	16



PREVIOUS MONUMENTS:
 SM. RR. SPK.
 BOAT SPK./WASHER



O.D.O.T. DISTRICT 2 SURVEY OFFICE

PERSONNEL

REFERENCE NO. 35

SHEET 7 OF 11

NOTES CHENEY

H.C. BARBOUR

DATE 10-10-1991

ROUTE 19

R.C. RIPPLE

WEATHER CLOUDY

COUNTY OTTAWA

TEMP. 60°

TOWNSHIP CAEROLL

SECTION 8 & 9

T7 N R1 SE

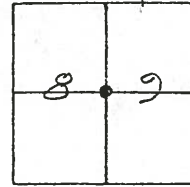
TYPE MONUMENT RE-SET PK/WASHER

ON SURFACE - BELOW

LEFT - C PAW'T. - RIGHT 6'

4' TO W. EDGE PAVEMENT

S.L.M. 451+76 (Record Sta.) 8.54±

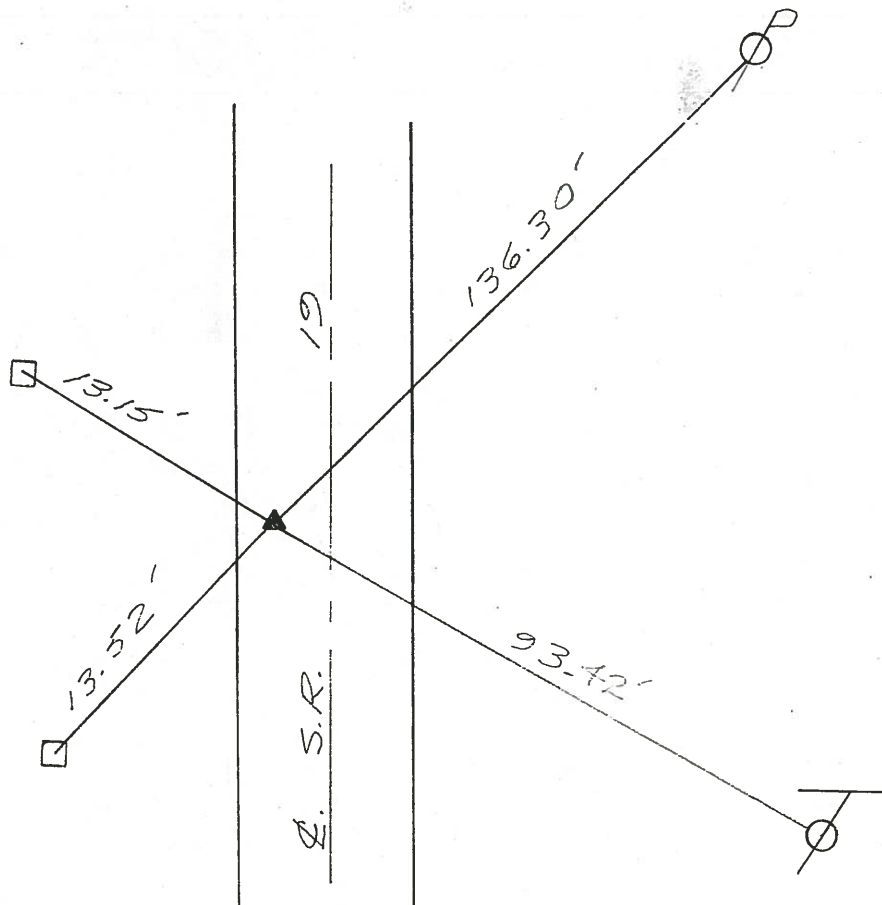


PREVIOUS MONUMENTS:

BOAT SPK/WASHER

SQ. BOLT

FO.



O.D.O.T. DISTRICT 2 SURVEY OFFICE

PERSONNEL

REFERENCE NO. 36

SHEET 8 OF 11

NOTES Cheney

H.C. BARBOUR

R.C. RIPPLE

DATE 10/10/91

WEATHER SUNNY

TEMP. 60°

ROUTE SR#19

COUNTY OTTAWA

TOWNSHIP CARROLL

SECTION _____

T 7 N R 15 E

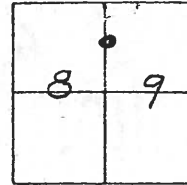
TYPE MONUMENT Reset P.K. NAIL & WASHER

ON SURFACE - ~~BELOW~~ _____

~~LEFT~~ - C. PAV'T. - RIGHT 1'

10.3 TO W EDGE PAVEMENT

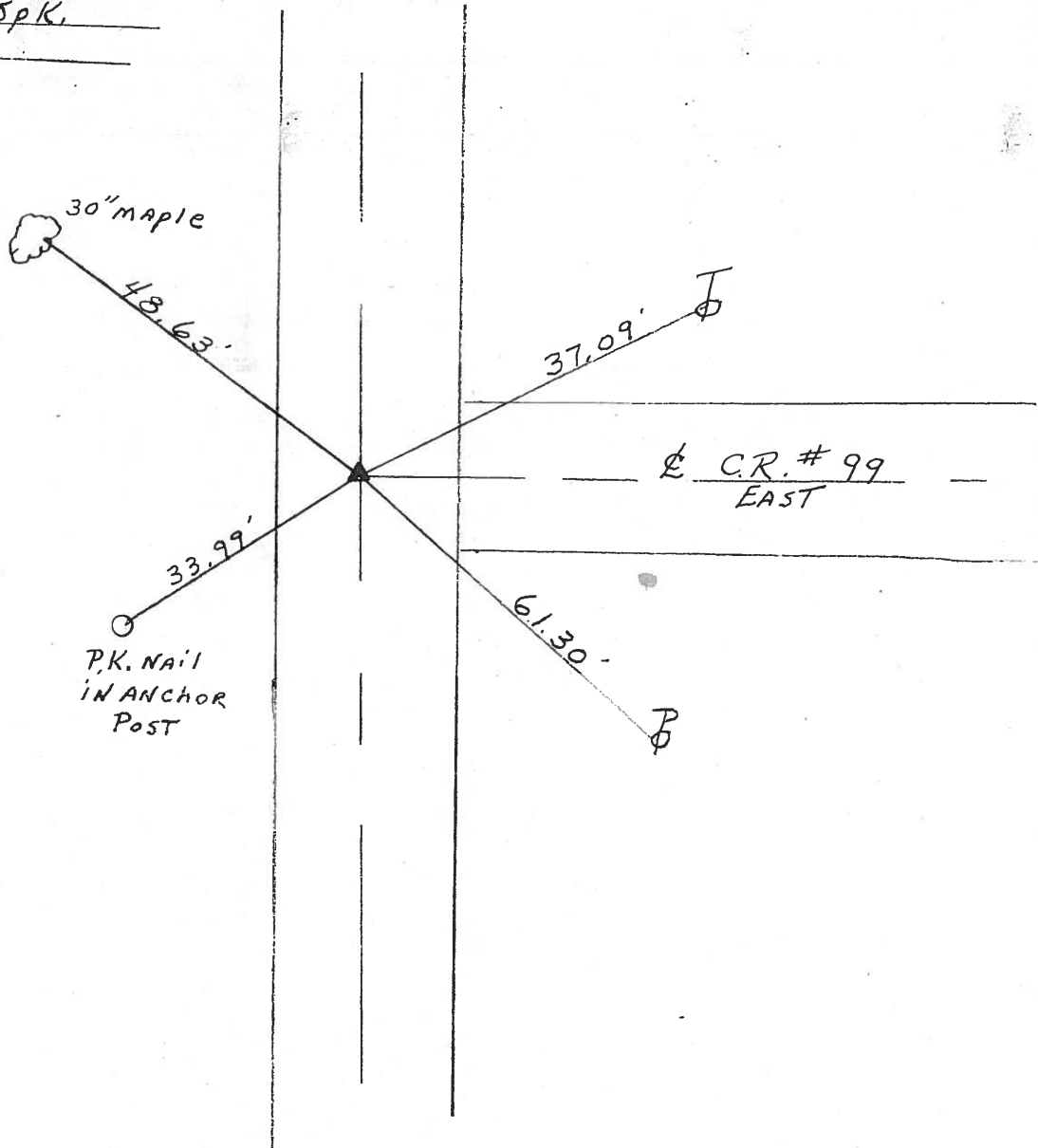
S.L.M. 464743



Previous Mon.

Small R.R. Spk.

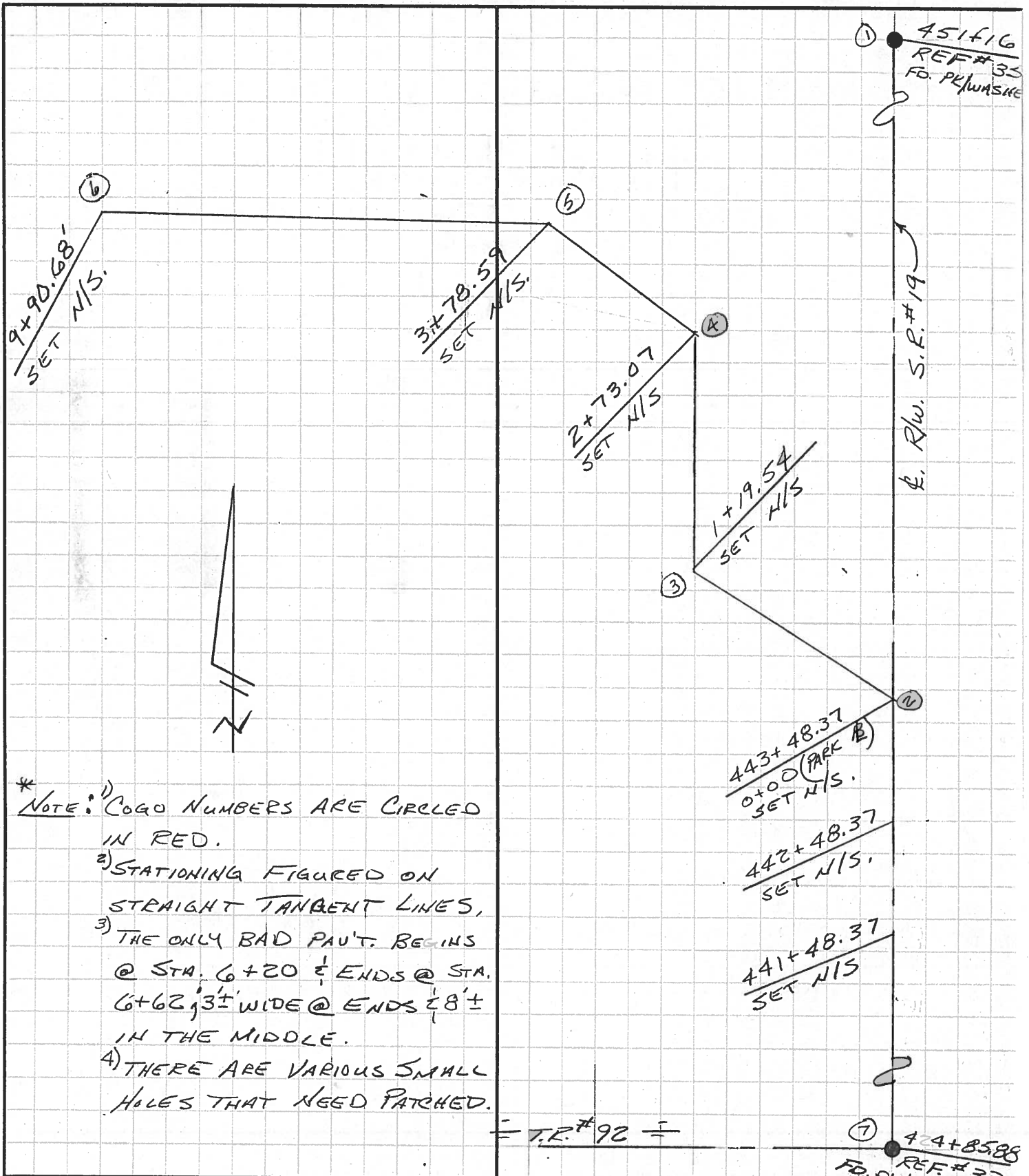
Sq. Bolt



PERSONNEL	TITLE	PERSONNEL	TITLE
CHENEY			
RIPPLE			
GEYMAN			

COUNTY OTAWA DATE 2-7-1994
 S. R. #19 WEATHER FAIR
 SEC. TOUSSAINT WILDLIFE AREA 8.4± TEMP. 20°

DESCRIPTION ALIGNMENT - TOUSSAINT WILDLIFE AREA JOB NO. 026112-6
 LEFT CENTER LINE RIGHT



* NOTE: 1) COGO NUMBERS ARE CIRCLED IN RED.

2) STATIONING FIGURED ON STRAIGHT TANGENT LINES,

3) THE ONLY BAD PAVT. BEGINS @ STA. 6+20 & ENDS @ STA. 6+62, 3± WIDE @ ENDS & 8± IN THE MIDDLE.

4) THERE ARE VARIOUS SMALL HOLES THAT NEED PATCHED.

PERSONNEL	TITLE	PERSONNEL	TITLE
<u>CHENEY</u> ∇			
<u>RIPPLE</u> π			
<u>GEYMAN</u> ϕ			

COUNTY OTAWA DATE 2-7-1994
 S. R. #19 WEATHER FAIR
TOUSSAINT WILDLIFE
 SEC. AREA 8.4± TEMP. 20°

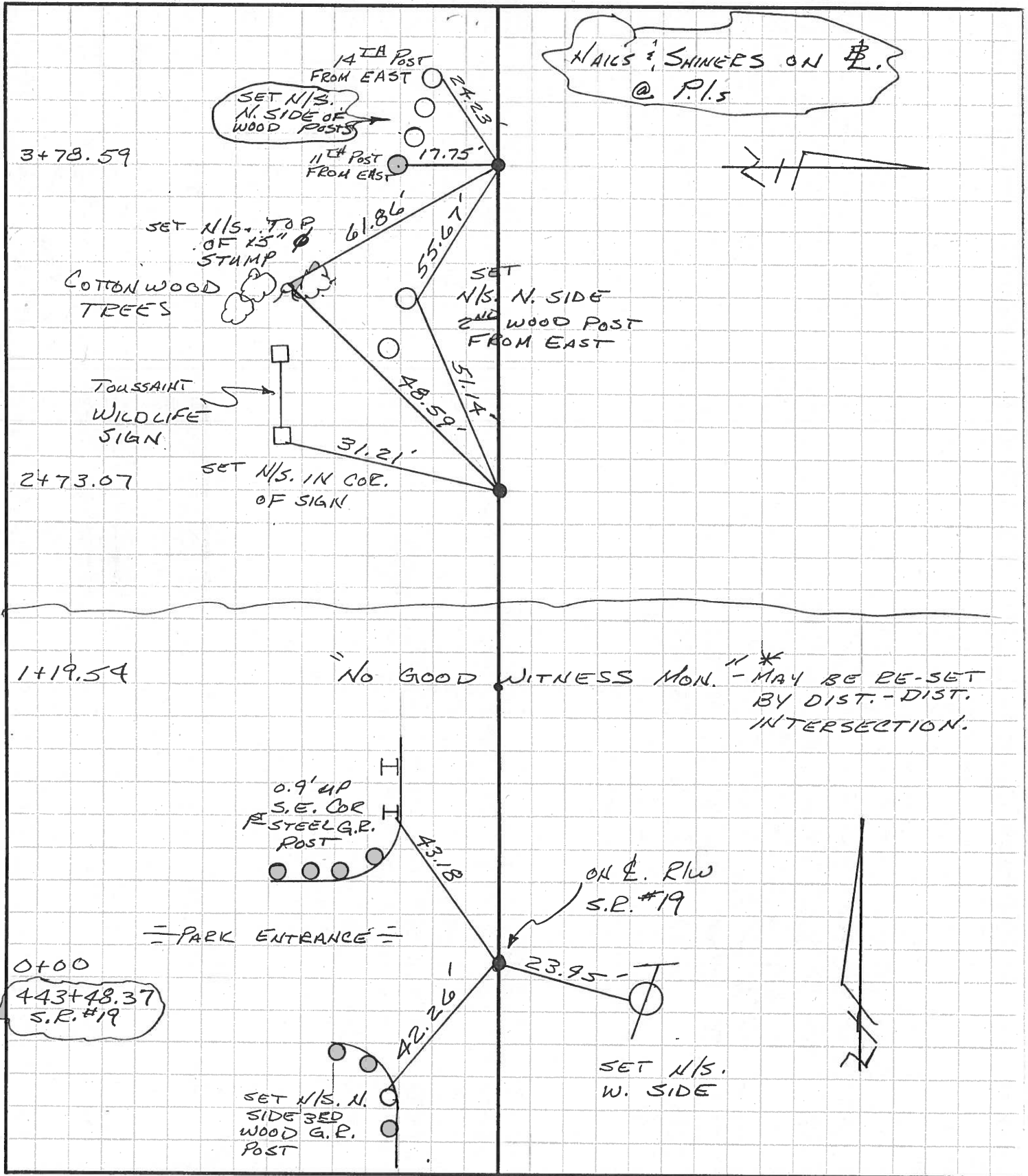
DESCRIPTION ANGLES & DISTANCES E. ALIGNMENT JOB NO. 026112-62
 LEFT CENTER LINE RIGHT

COURSE	DISTANCE	ANGLE	RIGHT
2-1	1) 767.63' 2) 767.64' <u>767.63'</u> 3) 767.63' 4) 767.62'		
2-3	1) 119.54' 2) 119.54' 3) 119.54'	7-2-3 =	1) 116-40-27 2) 233-20-52 M) 116-40-26
3-4	153.53' TAPED	2-3-4 =	1) 225-46-24 2) 91-32-38 M) 225-46-19
4-5	105.52' TAPED	3-4-5 =	1) 138-03-44 2) 276-07-31 M) 138-03-45
5-6	1) 612.10' 2) 612.08' 3) 612.08' <u>612.09'</u> 4) 612.10' 5) 612.08'	4-5-6 =	1) 134-42-37 2) 269-25-13 M) 134-42-37

PERSONNEL	TITLE	PERSONNEL	TITLE
CHENEY			
RIPPLE	H. TAPE		
GEYMAN	P. TAPE		

COUNTY OTTAWA DATE 2-15-1994
 S. R. #19 WEATHER FAIR
 SEC. TOUSSAINT WILDLIFE-8.4 TEMP. 40°

DESCRIPTION P.I. REFERENCES JOB NO. 026112-6
 LEFT CENTER LINE RIGHT



PERSONNEL	TITLE	PERSONNEL	TITLE
CHENEY	<i>[Signature]</i>		
RIPPLE	H. TAPE		
GEYMAN	R. TAPE		

COUNTY OTTAWA DATE 2-15-1994

S. R. #19 WEATHER FAIR

SEC. TOUSSAINT WILDLIFE 8.4+ TEMP. 40

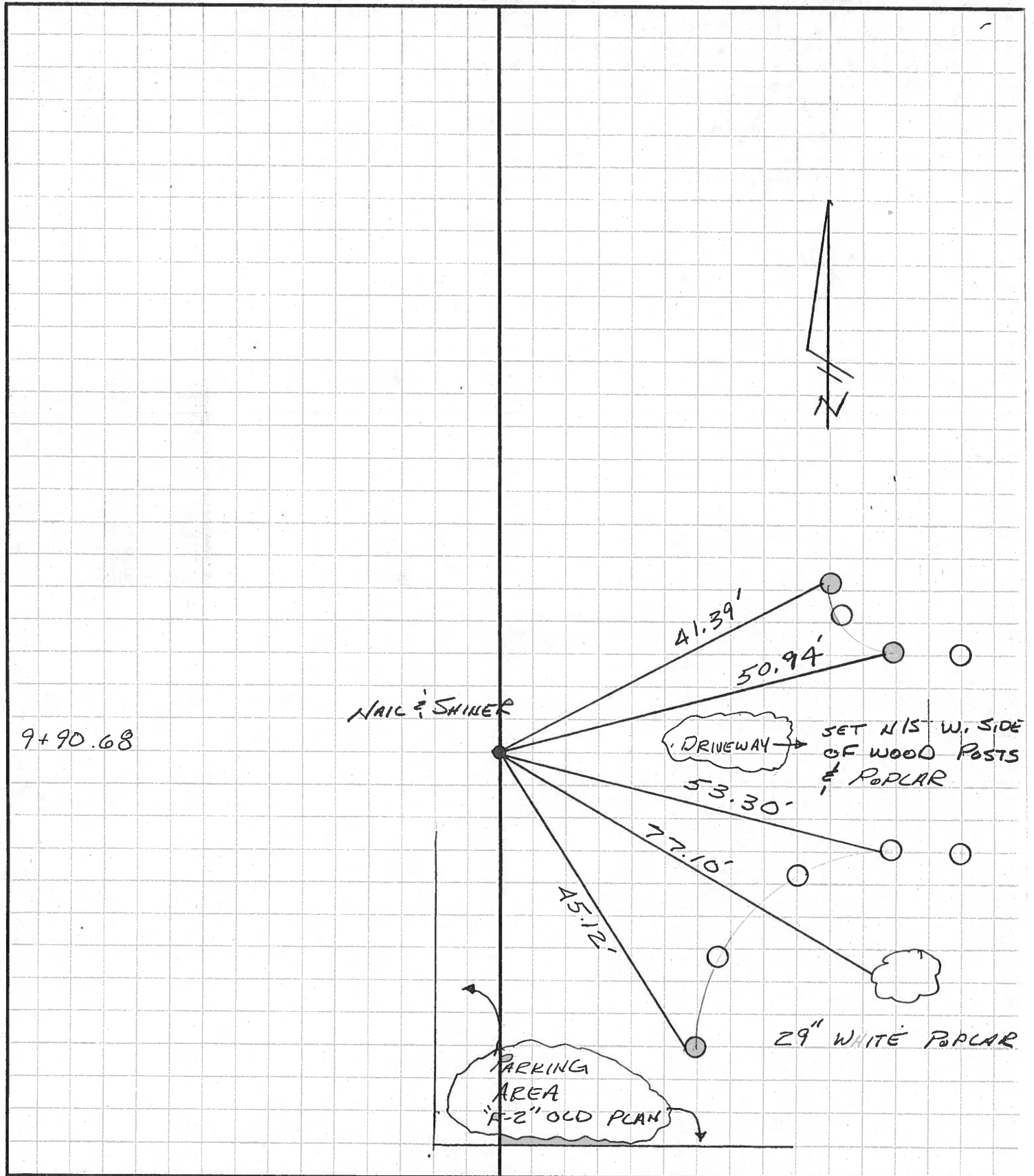
DESCRIPTION P.I. REFERENCES

JOB NO. 02612-62

LEFT

CENTER LINE

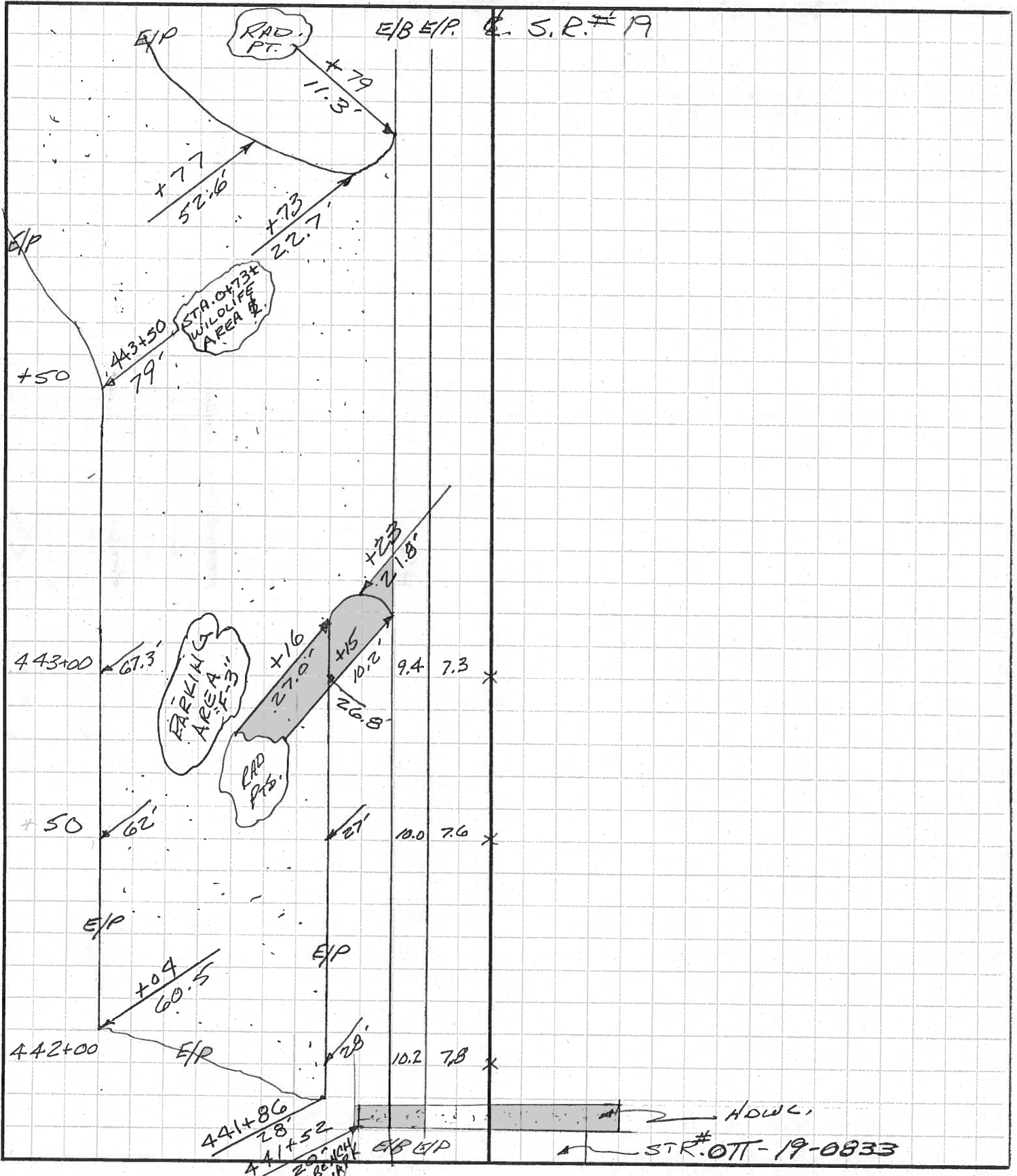
RIGHT



PERSONNEL	TITLE	PERSONNEL	TITLE
CHENEY	<i>[Signature]</i>		
RIPPLE	H. TAPE		
GEYMAN	R. TAPE		

COUNTY OTTAWA DATE 2-22-1994
 S. R. # 19 WEATHER OVERCAST
 SEC. AREA TOUSSAINT WILDLIFE AREA 8.45 TEMP. 30°

DESCRIPTION TOPO - FAULT, - S. R. # 19 JOB NO. 026112-6
 LEFT CENTER LINE RIGHT



PERSONNEL <u>CHENEY</u>	TITLE <u>[Signature]</u>	PERSONNEL	TITLE	COUNTY <u>OTTAWA</u>	DATE <u>2-22-1994</u>
<u>RIPPLE</u>	<u>H. TAPES</u>			S. R. <u>#19</u>	WEATHER <u>OVERCAST</u>
<u>GEYMAN</u>	<u>R. TAPES</u>			SEC. AREA <u>TOUSSAINT WILDLIFE 8.4 ±</u>	TEMP. <u>30°</u>
DESCRIPTION <u>TOPO PART - WILDLIFE AREA #</u>				JOB NO. <u>026112-62</u>	

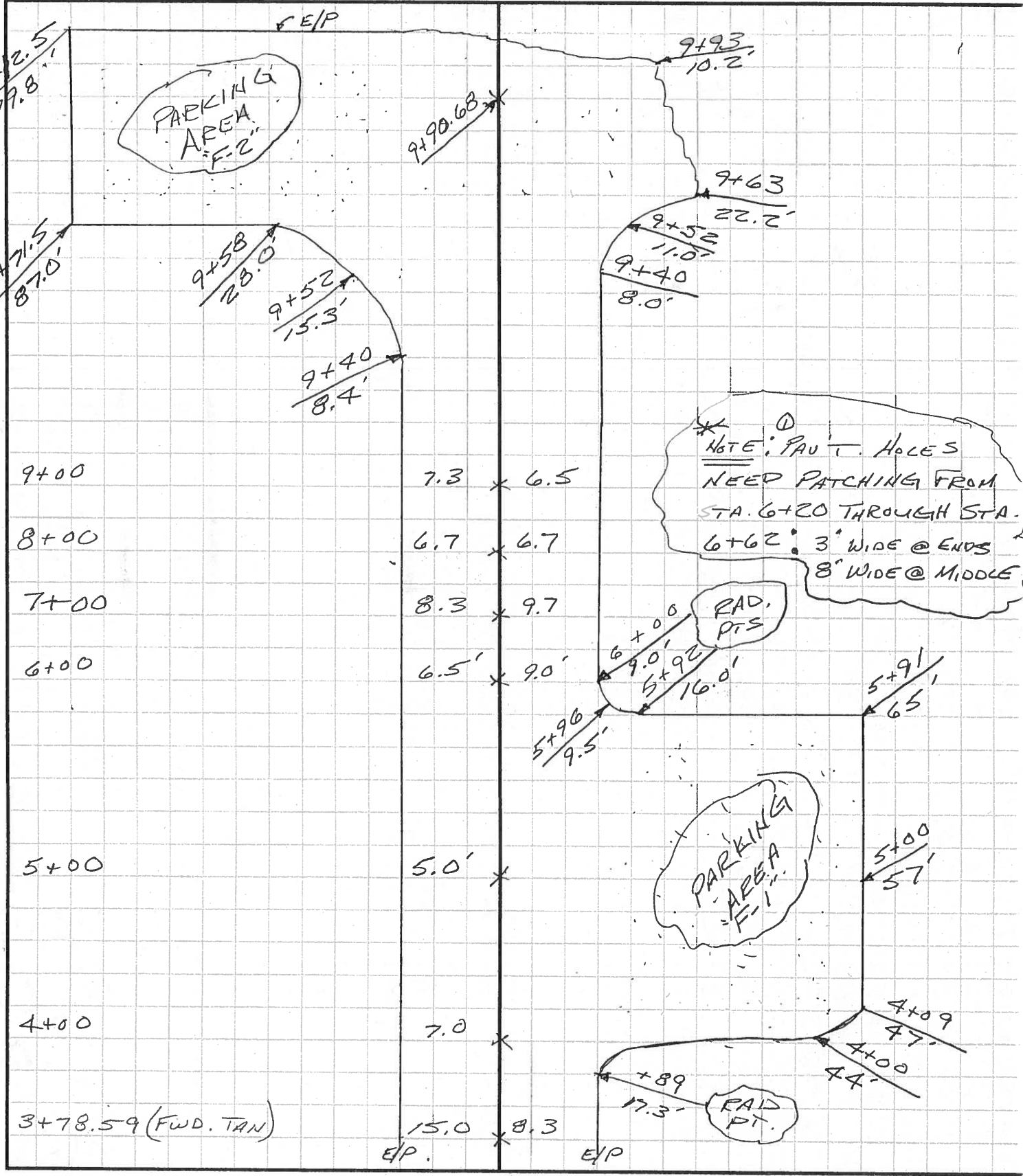
LEFT	CENTER LINE	RIGHT
	E/P	E/P
3+78.59 (BACK TAN)	14.0	7.0
3+75	12.5	8.0
3+50	7.0	11.5
3+25	7.5	12.5
3+00	7.0	9.5
2+73.07 (FWD. TAN)	18.0	2.0
2+73.07 (BACK TAN)	17.5	1.5
2+50	11.5	7.5
2+25	9.3	9.5
2+00	9.0'	11.0'
1+25	3.5	13.0
1+19.54 (FWD. TAN)	2.5	13.5
1+19.54 (BACK TAN)	3.0	14.5
1+00	11.0	8.0
0+75	30.0	4.0
0+50		6.0
0+25		14.0'
		E/P

*PARKING AREA LOCATED OFF S.R. #19 BASELINE F-3'

PERSONNEL	TITLE	PERSONNEL	TITLE
CHENEY			
RIPPLE	H. TAPE		
GREYMAN	R. TAPE		

COUNTY OTTAWA DATE 2-22-1994
 S. R. #19 WEATHER OVERCAST
 TOUSSAINT WILDLIFE
 SEC. AREA 8.4± TEMP. 30°

DESCRIPTION TOPO PART. WILDLIFE AREA B. JOB NO. 026112-62



PERSONNEL TITLE PERSONNEL TITLE
 CHENEY MT
 RIPPLE H. TAPE
 GEYMAN R. TAPE

COUNTY OTTAWA DATE 2-22-1994
 S. R. #19 WEATHER OVERCAST
TOUSSAINT WILDLIFE
 SEC. AREA 8.4± TEMP. 30°

DESCRIPTION X-SECTIONS @ ENTRANCE S.R. #19 JOB NO. 026112-62

STA.	LEFT		CENTER LINE		RIGHT		
	+	H. I.	-	ELEV.			
* B.M.	2.34			100.00	ASSUMED 10" CUT, S.W. COR. OF HDWL, STR. # OTT-19-0833 @ STA. 441+52 20' CT. S.E. #19		
442+00	<u>5.40</u> 54 PAVT.	<u>5.36</u> 28 EIP PARKING AREA	<u>5.2</u> 25	<u>2.6</u> 16.2	<u>2.40</u> 10.2 EIB	<u>2.35</u> 7.8 EIP	<u>2.22</u> 0
443+00	<u>4.60</u> 26.8 EIP PARKING AREA	<u>5.0</u> 24	<u>5.3</u> 21	<u>2.8</u> 15	<u>2.31</u> 9.4 EIB	<u>2.28</u> 7.3 EIP	<u>2.14</u> 0
	<u>4.88</u> 45 PAVT.	<u>5.04</u> 58 PAVT.	<u>5.32</u> 67.3 EIP	PARKING AREA			
443+35		<u>5.00</u> 62	<u>5.08</u> 44	<u>4.86</u> 26	<u>2.30</u> 9.2 EIB	<u>2.19</u> 7.3 EIP	<u>2.02</u> 0
443+50		<u>5.10</u> 61	<u>5.07</u> 42	<u>4.63</u> 26	<u>2.29</u> 9.2 EIB	<u>2.18</u> 7.3 EIP	<u>1.97</u> 0
443+70		<u>4.98</u> 35	<u>4.69</u> 37	<u>4.18</u> 25	<u>2.18</u> 9.2 EIB	<u>2.11</u> 7.3 EIP	<u>1.98</u> 0
* B.M.				2.34	100.00	10" CUT - SEE ABOVE	

3
2.6

0
2.3
2.9

0
2.3
2.9

DRIVE ENTRANCE TO PARK