

O.D.O.T. DISTRICT 2 SURVEY OFFICE (USE ONLY)

PERSONNEL

REFERENCE NO. 1

SHEET 1 OF 27

NOTES AUBLE
 H.C. AUBLE
 R.C. RHOADES
ASTON

DATE 7/31/23
 WEATHER FAIR
 TEMP. 75°

ROUTE US 6
 COUNTY SANDUSKY
 TOWNSHIP MADISON
 SECTION 31

DWG BY RHOADES PID R/W

T 5 N R 13 E

TYPE MONUMENT MONBOX W/ 1" IPIN

ON SURFACE - ~~BELOW~~ ON

OFFSET ☉ PAVEMENT ON LT : RT

- TO - EDGE PAVEMENT

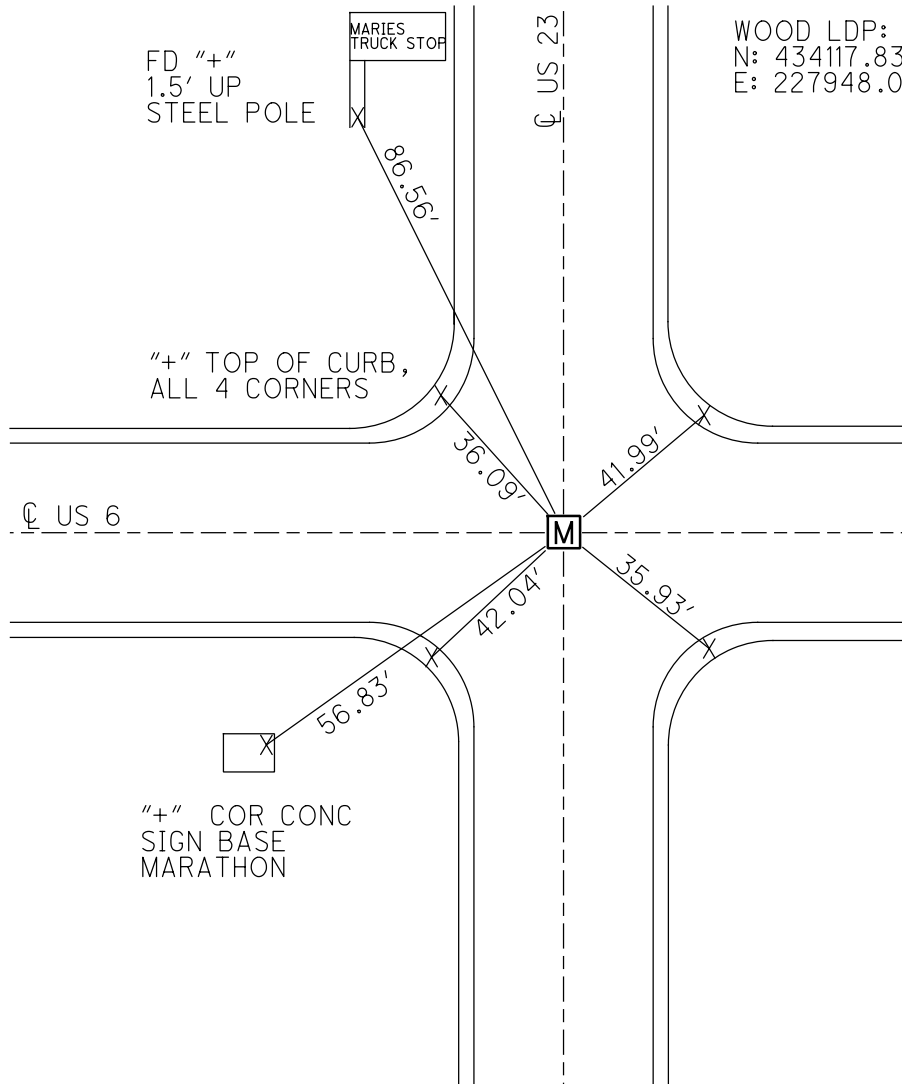
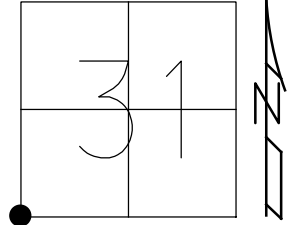
STATION: 0+00

HORZ.DATUM: NAD83(2011)

GEOID: NAVD88 2018

GRID: NORTHING: 611428.370

EASTING: 1716626.270



WOOD LDP:
 N: 434117.838
 E: 227948.000

RECORD: P.I.
 Δ=00°16' LT (PLAN)
 FD RUSTED PK NAIL
 12/18/80
 FD R.R.SPIKE
 4.5" DOWN
 7/30/81, CL
 SET SM.R.R.SPIKE
 9/27/83, CL
 FD MONBOX
 W/1" IPIN
 REF37
 11/29/12, SHH
 NEWREF37
 4/22/14
 FD MONBOX
 W/1" IPIN
 10/17/16, JLL
 FD MONBOX
 W/ 1" IPIN
 REF37
 7-31-23, DSA

NOTE: REF 37 US 23

O.D.O.T. DISTRICT 2 SURVEY OFFICE

PERSONNEL

REFERENCE NO. 1

SHEET 1 OF 26

NOTES LOEHRKE

DATE 7/30/81

ROUTE US 23

H.C. HOFFMAN

WEATHER CLEAR

COUNTY SANDUSKY

R.C. HOUSEHOLDER

TEMP. 75°

TOWNSHIP MADISON

SECTION 31

T 5 N R 13 E

TYPE MONUMENT R.R. SPIKE

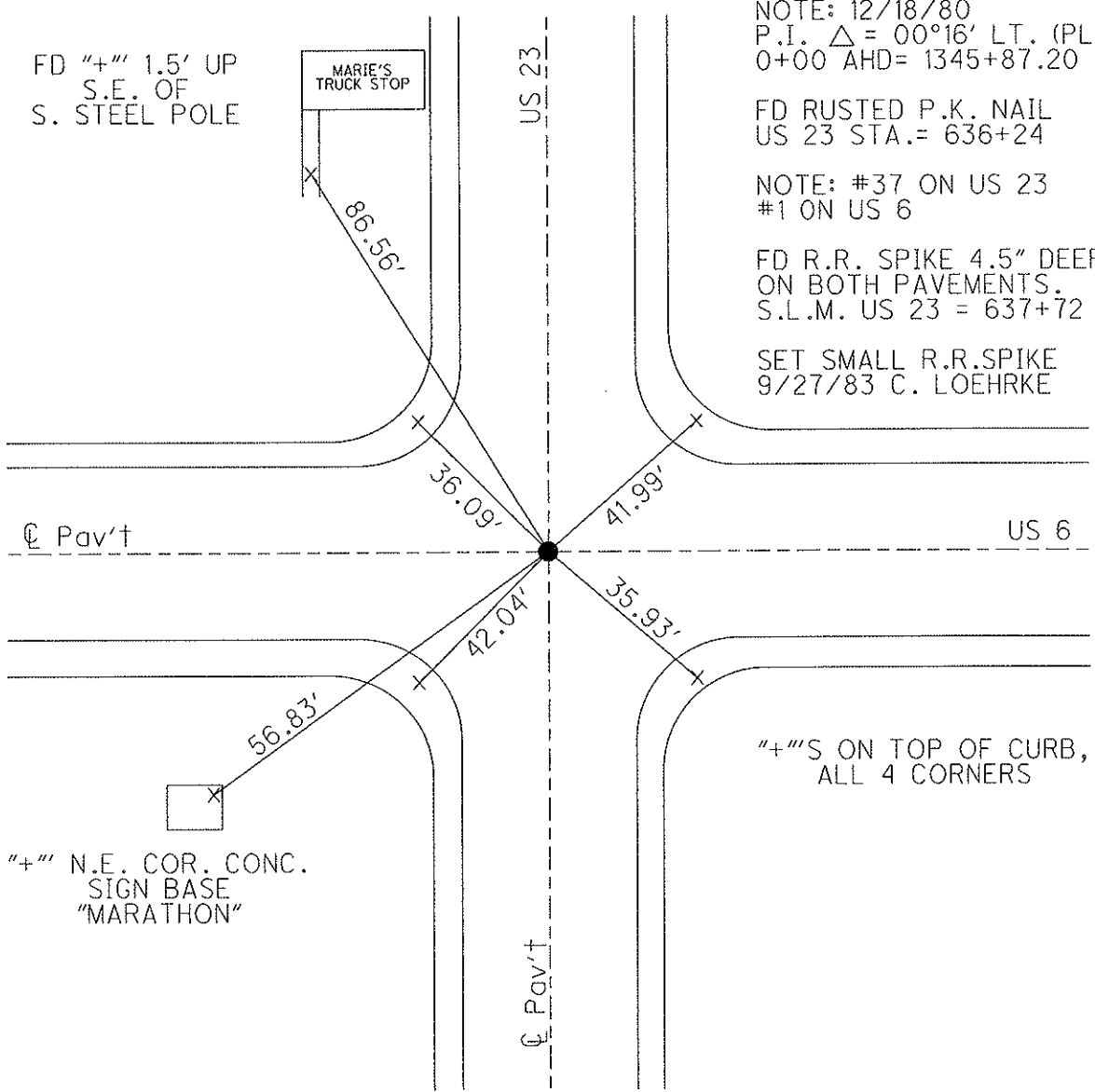
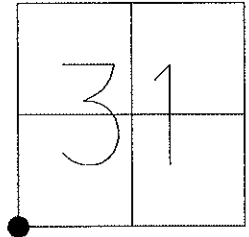
~~ON SURFACE~~ - BELOW 4.5"

LEFT - Q PAV'T - RIGHT ON

TO EDGE PAVEMENT

S.L.M. 0+00, (US 23=636+13.40 REC. 9/27/83)

GPS Northing: _____ Easting: _____



NOTE: 12/18/80
P.I. Δ = 00°16' LT. (PLAN)
0+00 AHD= 1345+87.20 BK

FD RUSTED P.K. NAIL
US 23 STA.= 636+24

NOTE: #37 ON US 23
#1 ON US 6

FD R.R. SPIKE 4.5" DEEP
ON BOTH PAVEMENTS.
S.L.M. US 23 = 637+72

SET SMALL R.R. SPIKE
9/27/83 C. LOEHRKE

\"+\"\"S ON TOP OF CURB,
ALL 4 CORNERS

County Wood S.R. U.S. 23

Date 7-30-81

Township FREEDOM

Weather clear

Section 36

Temp. +75°

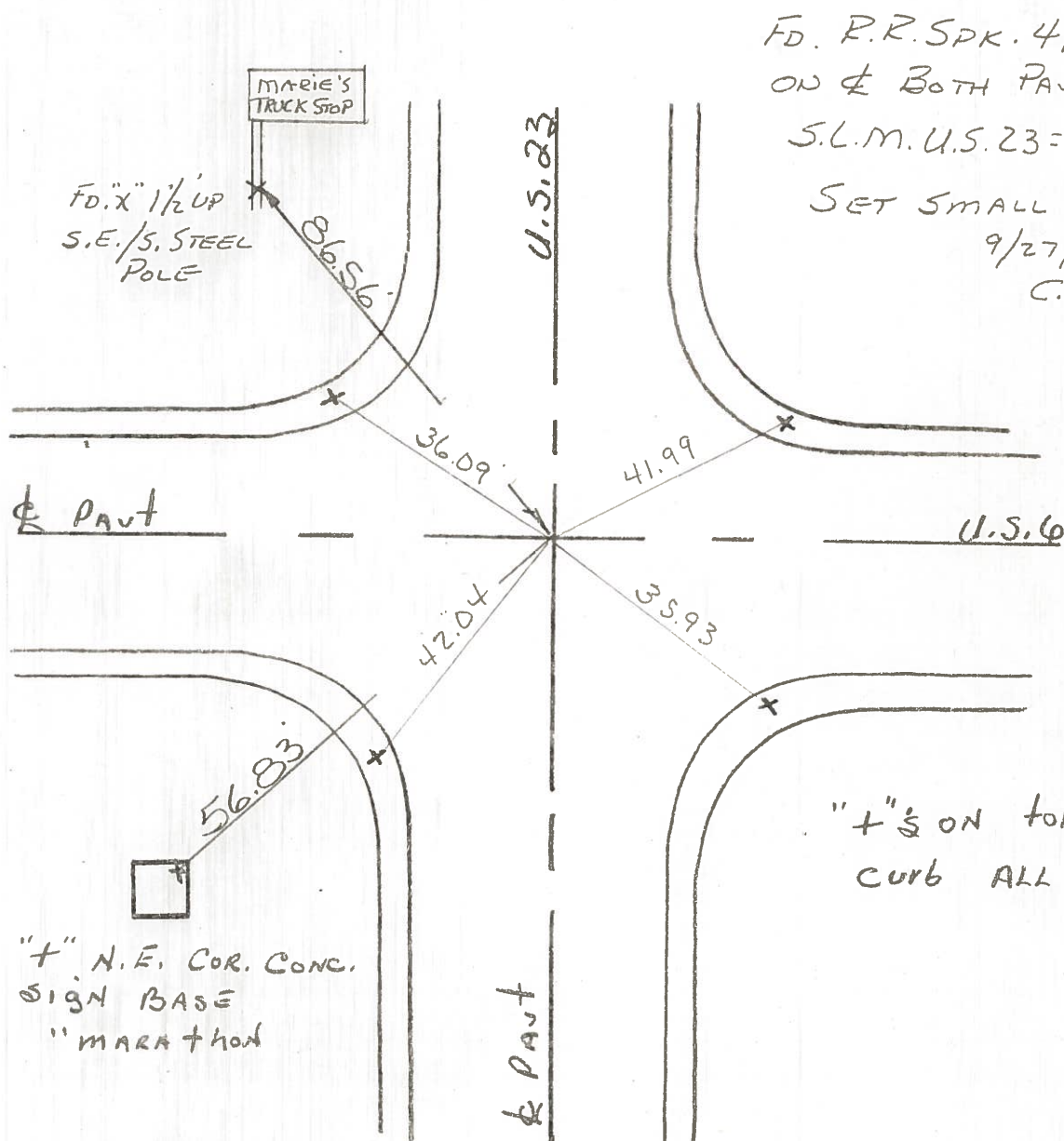
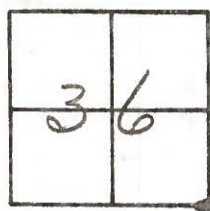
T5N, R12E

Personnel HOFFMAN

Loehrke

#37 on US23 Householder

#1 on US6 _____



FD. R.R. SPK. 4 1/2" DEEP
ON & BOTH PAVEMENTS.
S.L.M. U.S. 23 = 637+72
SET SMALL R.R. SPK.
9/27/83
C. LOEHRKE

"+"s ON TOP OF
CURB ALL 4 CORNERS

New Survey Sta. 636+13.40 ~ Rec.

County SEANDUSKY S.R. U.S. #6

Date 12/18/80

Township MADISON

Weather overcast

Section 31

Temp. 38°

T5N, R13E

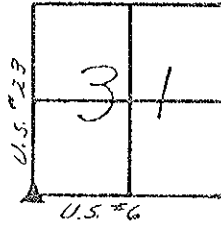
Personnel CRONIN

RIPPLE

GEYMAN

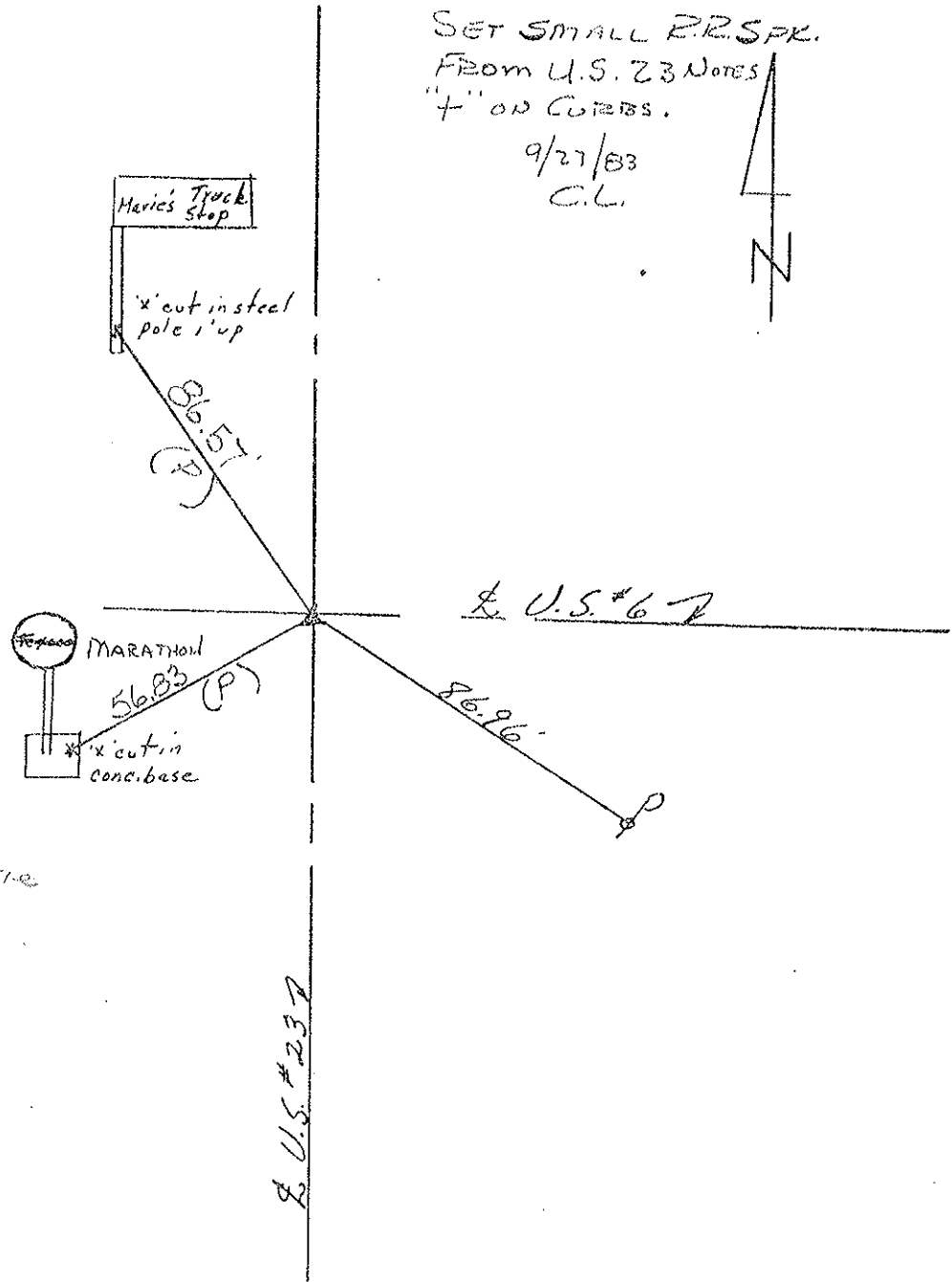
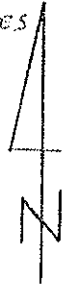
SCHNEIDER

BARBOUR



#1 San. Co

SET SMALL P.R. SPK.
 FROM U.S. 23 NOTES
 "4" ON CURBS.
 9/27/83
 C.L.



P.I.
 = 00° 16' Lt. (Plan)
 00 Md. = 1345 + 87.20 86.
 trusted P.K. nail
 S. #23 Sta. = 636 + 24

DID x107 Re-tie
 3-20-85 SWK

U.S. #23

PERSONNEL TITLE PERSONNEL TITLE
 Schneider _____ Potts _____
 MOSSER _____
 BARBOUR _____
 Redding _____

COUNTY Sandusky DATE 11-29-67
 S. R. US # 6 WEATHER _____
 SEC. Co. line to r mount TEMP. _____

DESCRIPTION Control JOB NO. _____

