

O.D.O.T. DISTRICT 2 SURVEY OFFICE

PERSONNEL _____

REFERENCE NO. 2

SHEET 2 OF 26

NOTES Homan

DATE 8-11-09

ROUTE US 6

H.C. Homan

WEATHER Cloudy

COUNTY Sandusky

R.C. Rousos

TEMP. 80°

TOWNSHIP Madison

SECTION 31

T 5 N R 13 N

TYPE MONUMENT R.R. SPIKE

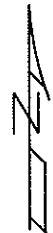
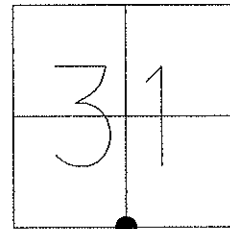
ON SURFACE - ~~BELOW~~ _____ ON SURFACE

LEFT - C PAV'T - RIGHT On

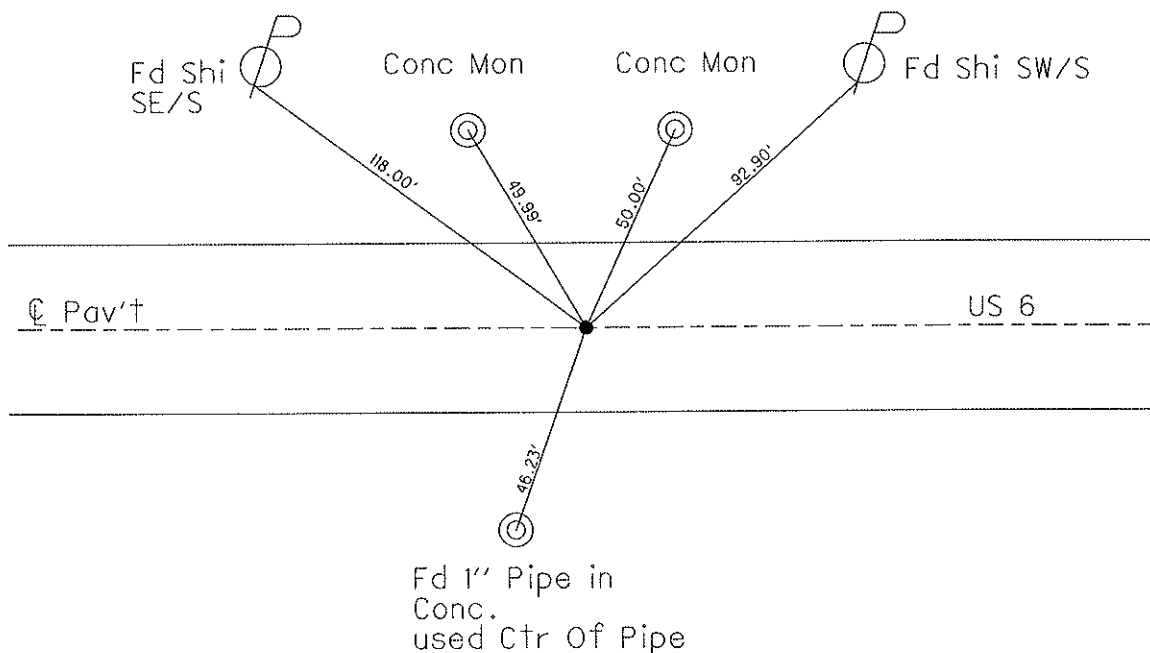
12.3 TO Rt EDGE PAVEMENT

S.L.M. 25+48

GPS Northing: 611417.795 Easting: 1719173.366



Record = PI
 $\Delta=0^\circ-24'$ Rt
 25+47.37
 Reset Sm. RR Spk
 5-6-93
 M.B.
 Reset Mag & Washer
 11-02-09 DH

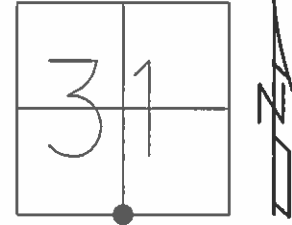


O.D.O.T. DISTRICT 2 SURVEY OFFICE (USE ONLY)

PERSONNEL _____ REFERENCE NO. 2 SHEET 2 OF 27

NOTES HOMAN DATE 8-11-09 ROUTE US 6
 H.C. HOMAN WEATHER CLOUDY COUNTY SANDUSKY
 R.C. ROUSOS TEMP. 80° TOWNSHIP MADISON
 SECTION 31
T 5 N R 13 E

TYPE MONUMENT R.R.SPIKE
 ON SURFACE - ~~BELOW~~ ON
 LEFT - ☉ PAV'T - RIGHT ON
12.3 TORT EDGE PAVEMENT
 S.L.M. 25+48
 GPS NORTHING: 611417.824 EASTING: 1719173.373

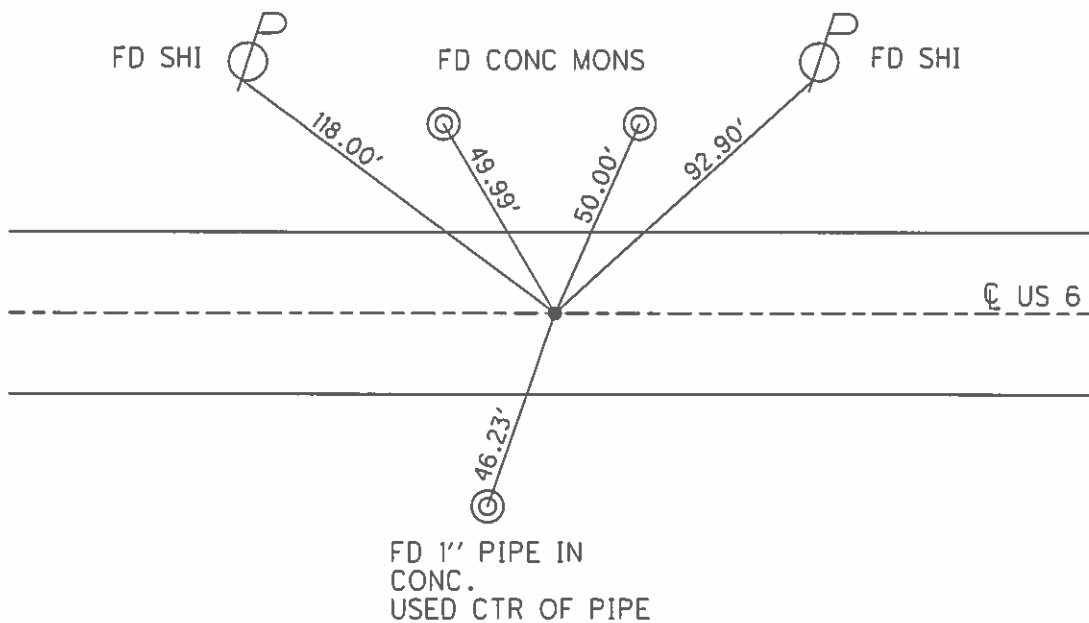


RECORD = P.I.
 $\Delta = 0^\circ 24' RT$
 STA. 25+47.37

SET SM.R.R.SPIKE
 5/6/93, MB

SET MAG/WASHER
 11/2/09, DCH

FD MAG/WASHER
 REF2
 11/29/12, SAH



O.D.O.T. DISTRICT 2 SURVEY OFFICE

PERSONNEL

REFERENCE NO. 2

SHEET OF

NOTES BARNHISEL

H.C. VAN DUSEN

R.C. CORDES

DATE 4-21-93

WEATHER CLOUDY

TEMP. +37°

ROUTE US 6

COUNTY SANDUSKY

TOWNSHIP MADISON

SECTION 31

T 5 N R 13 E

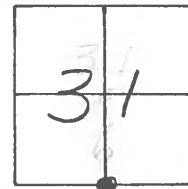
TYPE MONUMENT P.K. & WASHER

ON SURFACE - ~~BELOW~~ yes

~~EAST~~ - E PAV'T. - RIGHT 0.5

12.3 TO RT EDGE PAVEMENT

S.L.M. 25+48

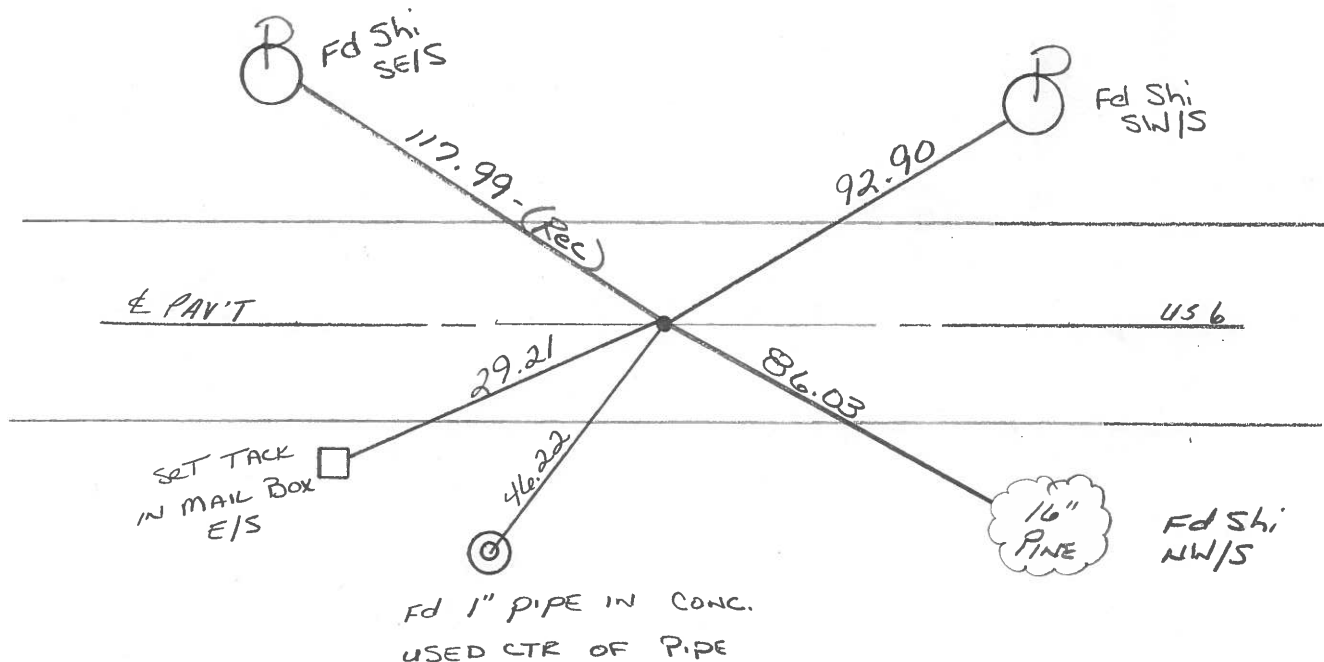


RECORD = P.I.

$\Delta = 0^{\circ} - 24' RT$
25+47.37

Reset Sm. RR Spk

5-6-93
M.B.



OD.O.T. DISTRICT 2 SURVEY OFFICE

SHEET _____ OF _____

Resurfaced 1993

County SANDUSKY S. R. U.S. 6

Date 8-30-83

Township MADISON

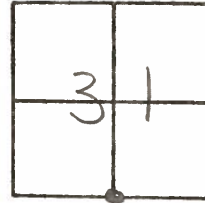
Weather CLEAR

Section 31

Temp. + 75°

T5N, R13E

Personnel HOFFMAN



LOEHRKE

BARNHISEL

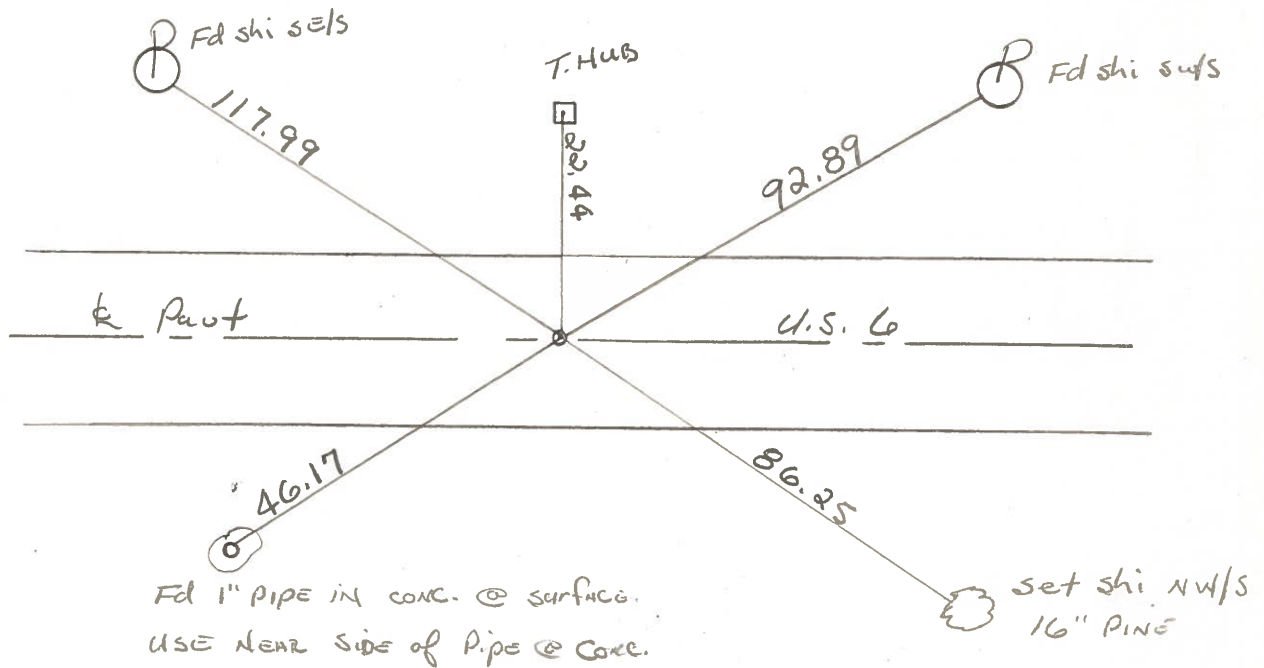
#2

Fd small bolt spk @ surface
ON & PAUT

S.L.M. = 25 + 53

Record: P.I.
Δ = 0° - 24' RT
25 + 47.37

SET P.K./WASHER
9/27/83
C. LOEHRKE



County SANDUSKY S.R. U.S. #6

Date 12/18/80

Township MADISON

Weather overcast

Section 31

Temp. 38°

T5N, R13E

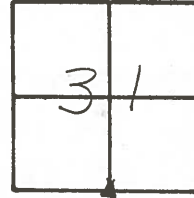
Personnel CRONIN

RIPPLE

GEYMAN

SCHNEIDER

BARBOUR



#2

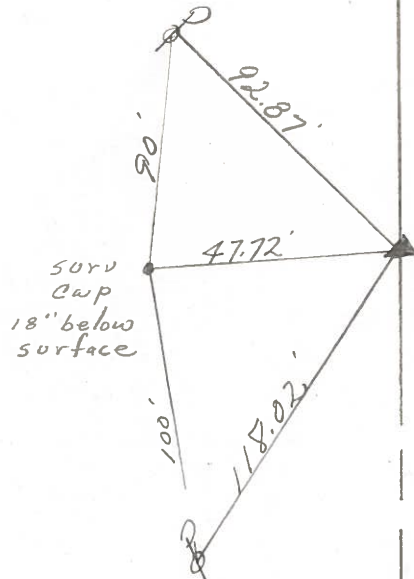


P.I

$\Delta = 00^\circ 24' R\pm$

25+47.37

Fd. small bolt spike
on surface



U.S. #6

PERSONNEL TITLE PERSONNEL TITLE
 Schneider _____ Potts _____
 MOSSER _____
 BARBOUR _____
 Redding _____

COUNTY Sandusky DATE 11-29-67
 S. R. US # 6 WEATHER _____
 SEC. Co. line to Fremont TEMP. _____

DESCRIPTION CONTR 185 LEFT CENTER LINE RIGHT JOB NO. _____

