

O.D.O.T. DISTRICT 2 SURVEY OFFICE

PERSONNEL \_\_\_\_\_

REFERENCE NO. 3

SHEET 3 OF 26

NOTES Homan

DATE 8-11-09

ROUTE US 6

H.C. Homan

WEATHER cloudy

COUNTY Sandusky

R.C. Rousos

TEMP. 80°

TOWNSHIP Madison

SECTION 31

T 5 N R 13 E

TYPE MONUMENT R.R. SPIKE

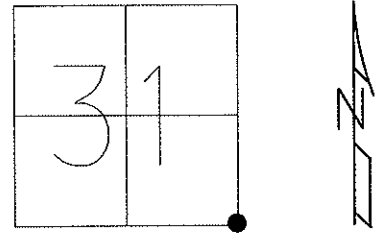
ON SURFACE - ~~BELOW~~ ON

~~LEFT~~ - Q PAV'T - ~~RIGHT~~ ON

12.5 TO LT EDGE PAVEMENT

S.L.M. 52 + 36

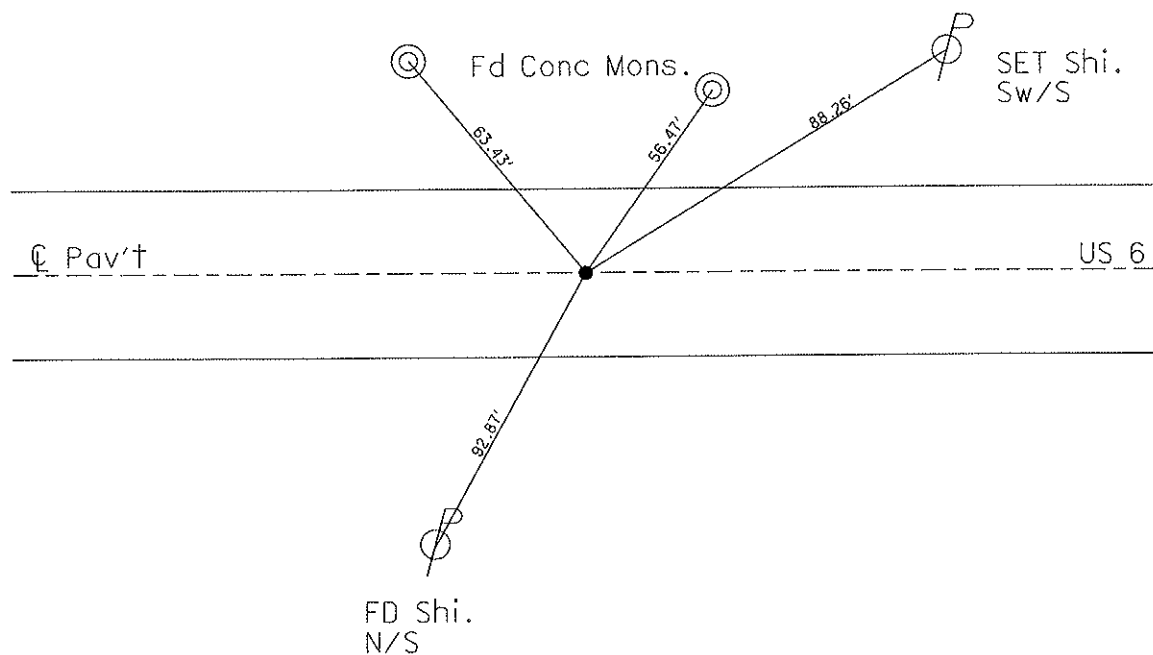
GPS Northing: 611388.715 Easting: 1721859.903



Record: P.O.T.  
52+35.80  
 $\Delta = 0^{\circ}+00'$

REset Sm RR Spk  
5-6-93 M.B.

Reset Mag & Washer  
11-03-09 DH



# O.D.O.T. DISTRICT 2 SURVEY OFFICE

PERSONNEL

REFERENCE NO. 3

SHEET      OF     

NOTES BARNHISEL

H.C. VAN DUZEN

R.C. CORDES

DATE 4-21-93

WEATHER Cloudy

TEMP. +37°

ROUTE US 6

COUNTY SANDUSKY

TOWNSHIP MADISON

SECTION 531

T 5 N R 13 E

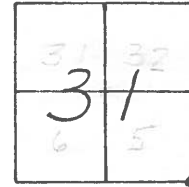
TYPE MONUMENT P.K. & Washer

ON SURFACE - ~~BELOW~~ yes

~~EAST - & PAV'T. - RIGHT~~ yes

12.5 TO LT EDGE PAVEMENT

S.L.M. 52+36



RECORD: P.O.T.

52+35.80

$\Delta = 0^{\circ}00'$

Reset Sm. RR Spk

5-6-93

m.B.

Fd Conc. mon.



63.47 - "D"

Fd Conc. mon.



56.44 - "D"

88.20



Fd Shi  
SWS

E PAVT

US 6

92.83



SET Shi  
N/S

County SANDUSKY S.R. 456

Date 8-30-83

Township MADISON

Weather CLEAR

Section 31

Temp. +75°

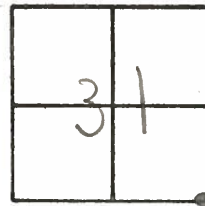
T5N, R13E

Personnel HOFFMAN

LOEHRKE

BARNHISEL

#3



Fd small Bolt spk @ surface  
0.3' Rt. of & part

S.L.M. = 52 + 49

SET P.K./WASHER

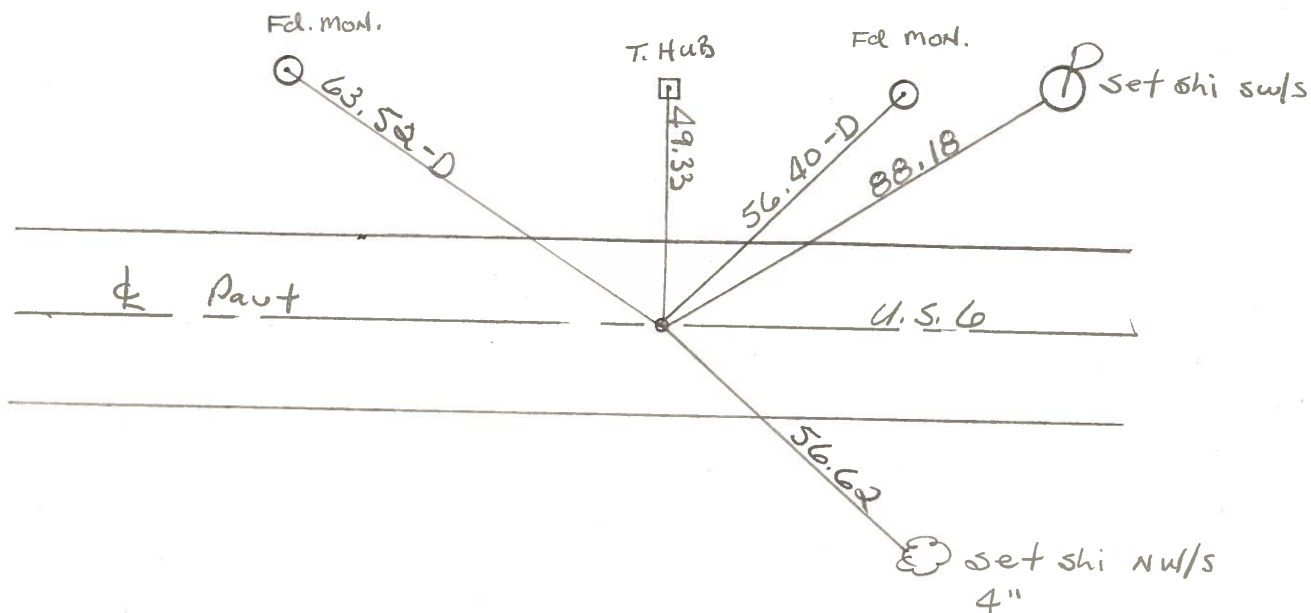
9/27/83

J. HOUSEHOLDER

RECORD: P.O.T.

52 + 35.80

$\Delta = 0^{\circ}.00'$



PERSONNEL TITLE PERSONNEL TITLE  
 Schneider \_\_\_\_\_ Potts \_\_\_\_\_  
 MOSSER \_\_\_\_\_  
 RARBOUR \_\_\_\_\_  
 Redding \_\_\_\_\_

COUNTY SANDUSKY DATE 11-29-67  
 S. R. US # 6 WEATHER \_\_\_\_\_  
 SEC. Co. line to Fremont TEMP. \_\_\_\_\_

DESCRIPTION Control Ties LEFT CENTER LINE RIGHT JOB NO. \_\_\_\_\_

