

O.D.O.T. DISTRICT 2 SURVEY OFFICE

PERSONNEL \_\_\_\_\_

REFERENCE NO. 4

SHEET 4 OF 26

NOTES HOMAN

DATE 8-11-09

ROUTE US 6

H.C. HOMAN

WEATHER CLOUDY

COUNTY SANDUSKY

R.C. ROUSOS

TEMP. 80°

TOWNSHIP MADISON

SECTION 32

T 5 N R 13 E

TYPE MONUMENT BOTH R.R. SPIKES

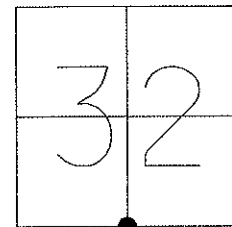
ON SURFACE - ~~BELOW~~ ON

~~LEFT~~ - Q PAV'T - ~~RIGHT~~ ON

12.3 TOLT. EDGE PAVEMENT

S.L.M. 79+65

GPS Northing: 611358.717 Easting: 1724574.821

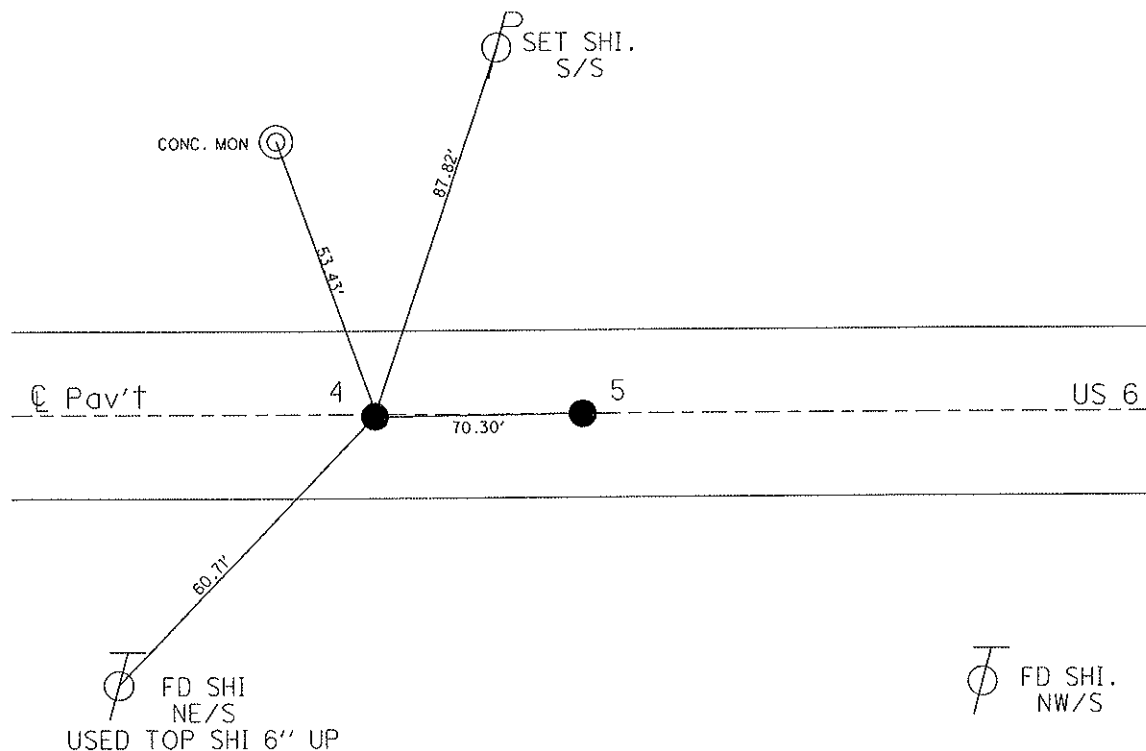


RECORD P.O.T. 79 + 51.71

RESET SM. RR SPK'S 5-6-93

RESET MAGS & WASHERS

11-03-09 DH



# O.D.O.T. DISTRICT 2 SURVEY OFFICE

PERSONNEL

REFERENCE NO.  $\overset{A}{4} \overset{B}{5}$

SHEET \_\_\_\_ OF \_\_\_\_

NOTES BARNHISEL

H.C. VAN DUSEN

R.C. CORDS

DATE 4-21-93

WEATHER cloudy

TEMP. +37°

ROUTE US 6

COUNTY SANDUSKY

TOWNSHIP MADISON

SECTION 32

T 5 N R 13 E

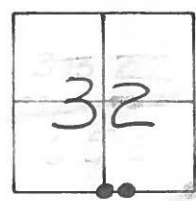
TYPE MONUMENT PK's + Washers

ON SURFACE - ~~BELOW~~ yes

~~LEFT - & PAV'T. - RIGHT~~ yes

12.3 TO LT EDGE PAVEMENT BOTH

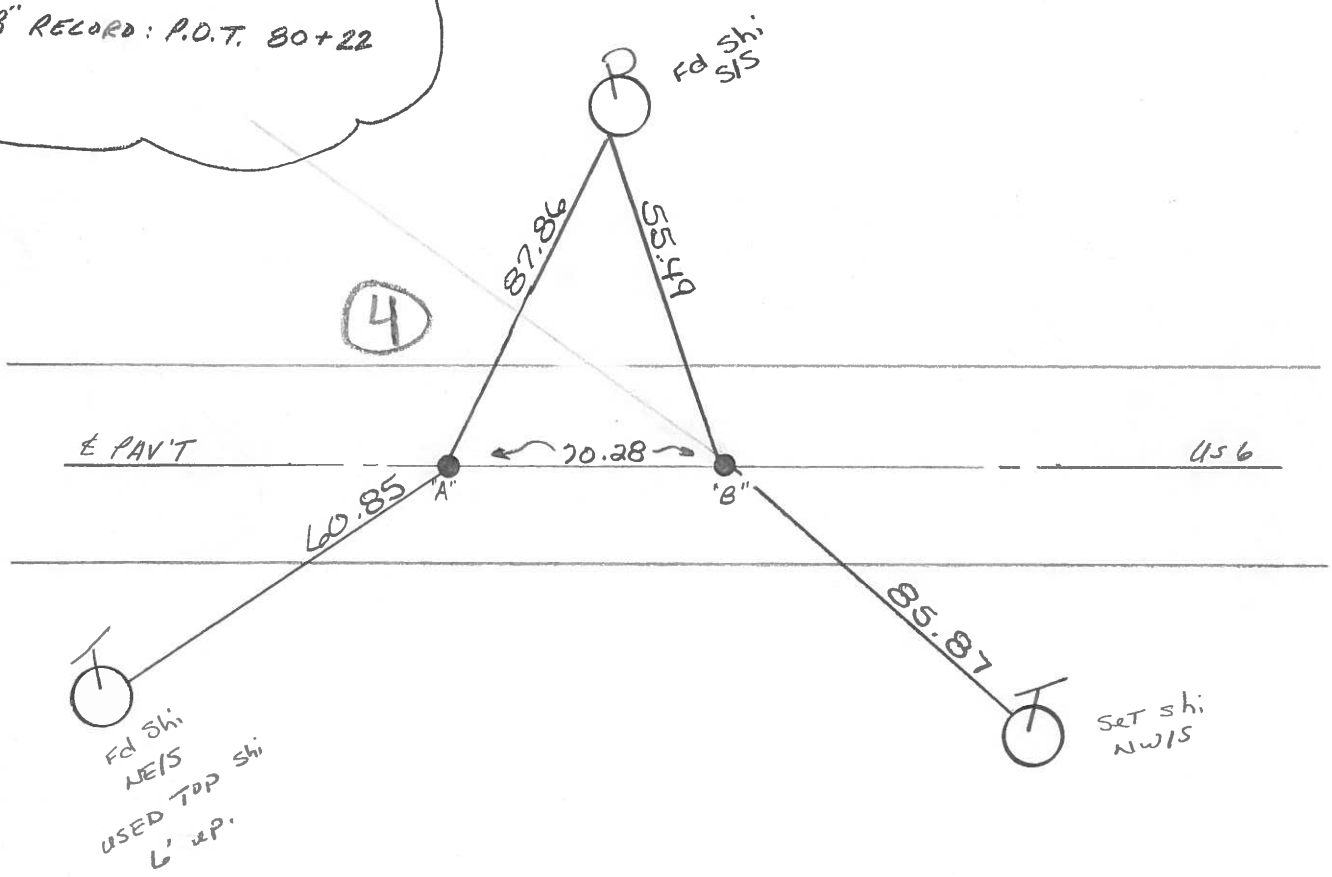
S.L.M. 79+65 & 80+35



"A" RECORD: P.O.T 79+51.71

Reset Sm. RR Spk's  
5-6-93  
m.B.

"B" RECORD: P.O.T. 80+22



# O.D.O.T. DISTRICT 2 SURVEY OFFICE

SHEET \_\_\_\_\_ OF \_\_\_\_\_

County SANDUSKY S.R. 4.S.6

Date 8-30-83

Township MADISON

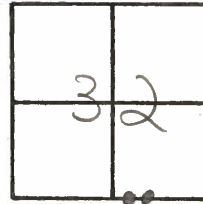
Weather CLEAR

Section 32

Temp. +80°

TSN, R3E

Personnel Hoffman



LOEHRKE

BARNHISEL

# 4 of 5  
"A" "B"

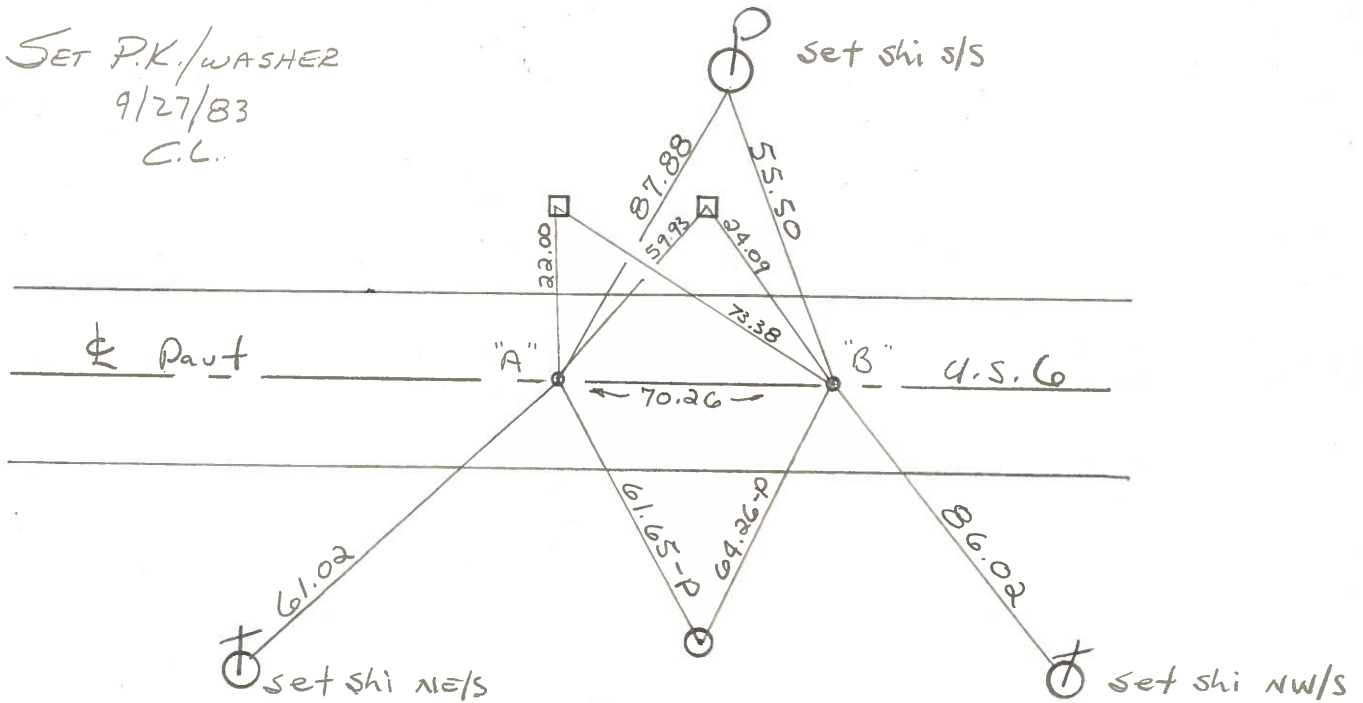
"A" Fd SMALL BOLT spk @ surface § 0.2' Rt of & Pant  
Record: P.O.T. 79+51.71

SLM = 79+71

"B" Fd SMALL BOLT spk @ surface § 0.2' Rt of & Pant  
Record: P.O.T. 80+22

SLM = 80+41

SET P.K./WASHER  
9/27/83  
C.L.



PERSONNEL TITLE PERSONNEL TITLE  
 Schneider \_\_\_\_\_ Potts \_\_\_\_\_  
 MOSSER \_\_\_\_\_  
 BARBOUR \_\_\_\_\_  
 Redding \_\_\_\_\_

COUNTY SA K DATE 11-29-67  
 S. R. # 6 WEATHER FAIR  
 SEC. 0.00 Helena TEMP. 35°

DESCRIPTION Ties for Control Points LEFT CENTER LINE RIGHT JOB NO. \_\_\_\_\_

