

O.D.O.T. DISTRICT 2 SURVEY OFFICE

PERSONNEL _____

REFERENCE NO. 5

SHEET 5 OF 26

NOTES HOMAN

DATE 8-11-09

ROUTE US 6

H.C. HOMAN

WEATHER CLOUDY

COUNTY SANDUSKY

R.C. ROUSOS

TEMP. 80°

TOWNSHIP MADISON

SECTION 32

T 5 N R 13 E

TYPE MONUMENT BOTH R.R.SPIKES

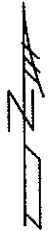
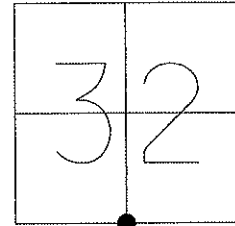
ON SURFACE - ~~BELOW~~ ON

~~LEFT~~ - Q PAV'T - ~~RIGHT~~ ON

12.3 TOLT. EDGE PAVEMENT

S.L.M. A=79+65, B=80+35

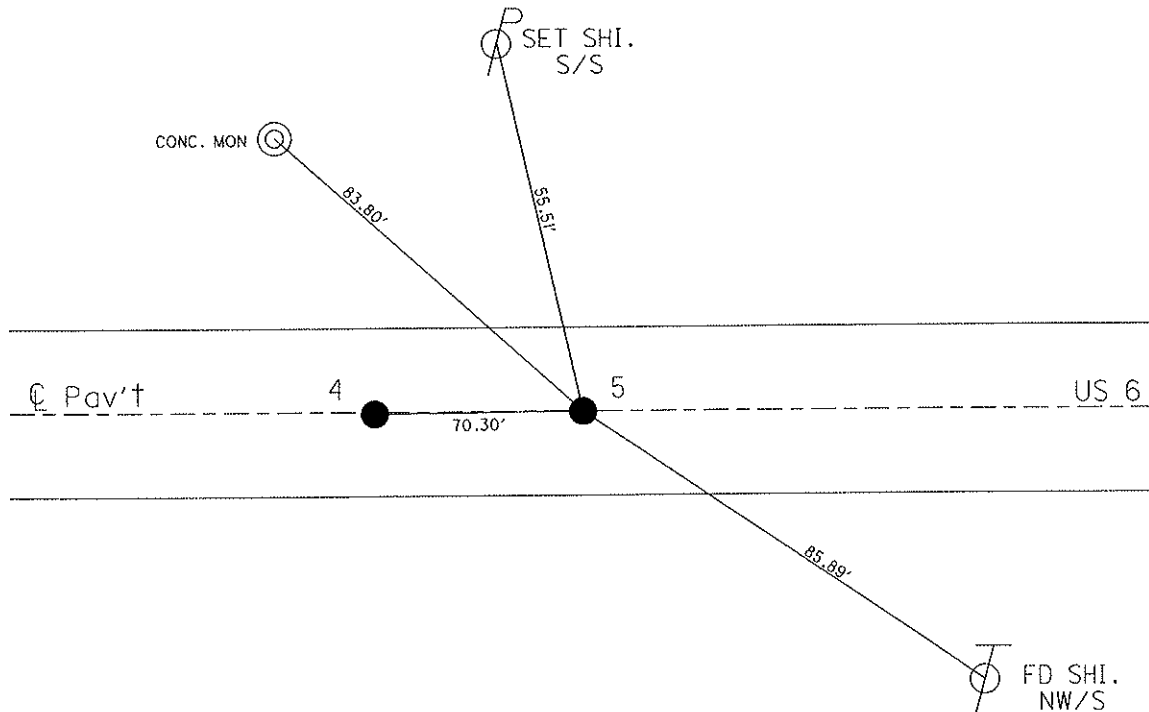
GPS Northing: 611357.870 Easting: 1724645.117



RECORD P.O.T. 80 + 22.00

RESET SM. RR SPK'S 5-6-93

RESET MAGS & WASHER
11-03-09 DH



O.D.O.T. DISTRICT 2 SURVEY OFFICE

PERSONNEL _____

REFERENCE NO. ^A 4 ^B 5

SHEET _____ OF _____

NOTES BARNHISEL

H.C. VAN DUSEN

DATE 4-21-93

ROUTE 456

R.C. CORDES

WEATHER cloudy

COUNTY SANDUSKY

TEMP. +37°

TOWNSHIP MADISON

SECTION 32

T. 5 N R. 13 E

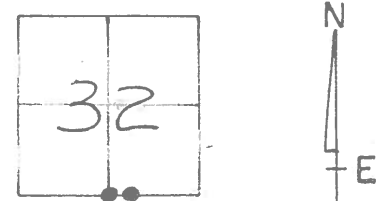
TYPE MONUMENT PK's + Washers

ON SURFACE - ~~BELOW~~ yes

~~LEFT - & PAV'T. - RIGHT~~ yes

12.3 TO LT EDGE PAVEMENT BOTH

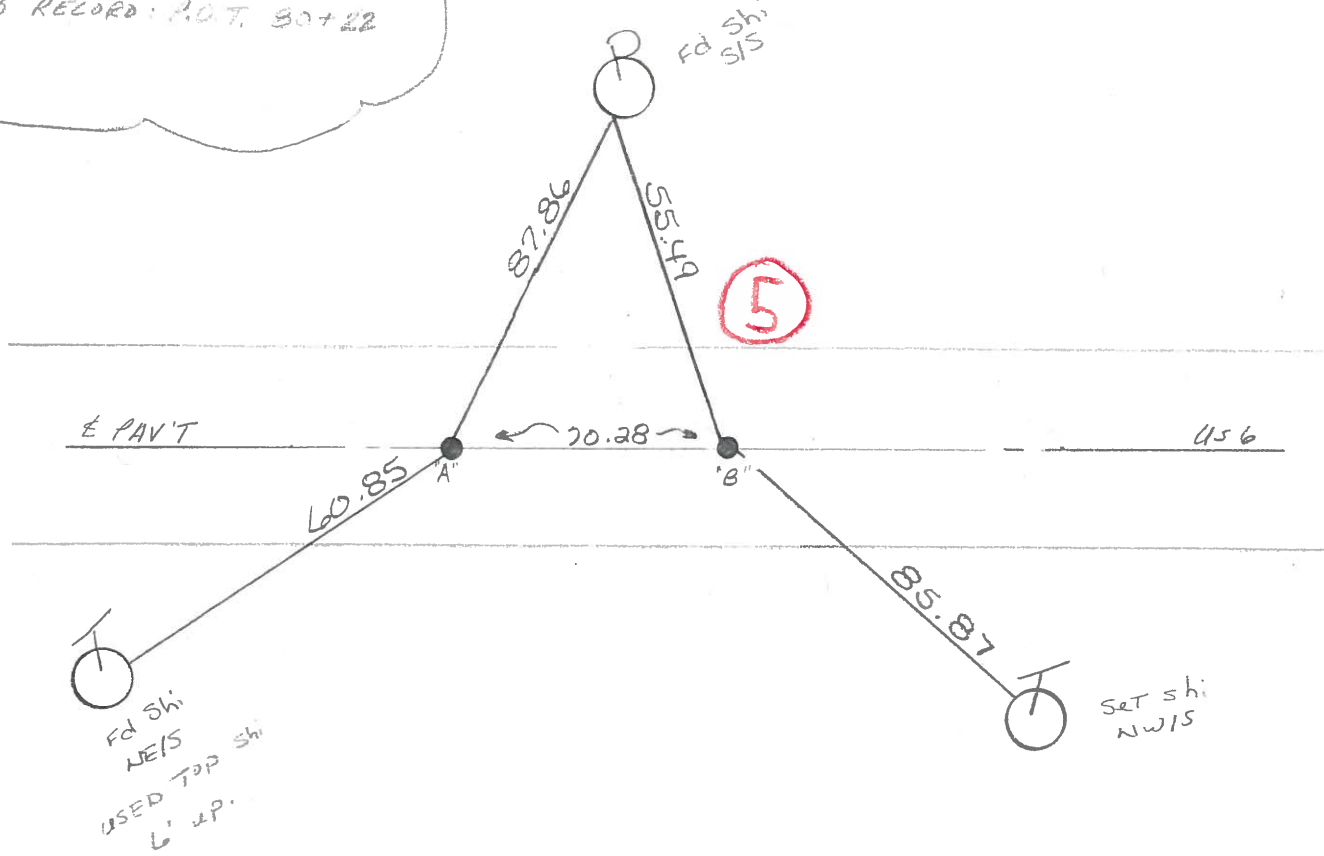
S.L.M. 79+65 & 80+35



"A" RECORD: P.O.T 79+51.71

Reset Sm. RR Spk's
5-6-93
M.B.

"B" RECORD: P.O.T. 80+22



O.D.O.T. DISTRICT 2 SURVEY OFFICE

SHEET _____ OF _____

County SANDUSKY S.R. 4.S.6

Date 8-30-83

Township MADISON

Weather CLEAR

Section 32

Temp. +80°

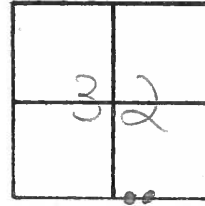
TSN, RISE

Personnel Hoffman

LOEHRKE

BARNHISEL

4 # 5
"A" "B"



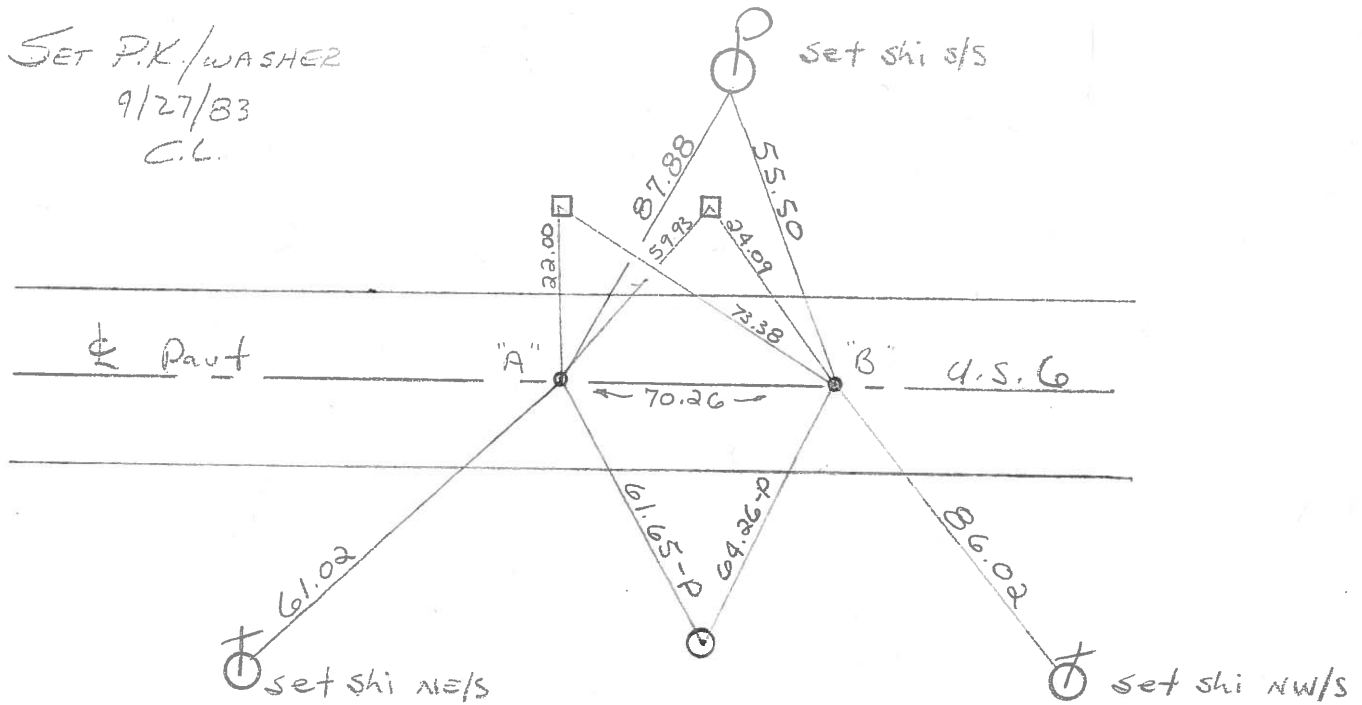
"A" Fcl SMALL Bolt spk @ surface $\frac{1}{2}$ 0.2' Rt of $\frac{1}{2}$ Pavt
Record: P.O.T. 79+51.71

SLM = 79+71

"B" Fcl SMALL Bolt spk @ surface $\frac{1}{2}$ 0.2' Rt of $\frac{1}{2}$ Pavt
Record: P.O.T. 80+22

SLM = 80+41

SET P.K./WASHER
9/27/83
C.L.



PERSONNEL TITLE PERSONNEL TITLE
Schneider _____ Potts _____
MOSSER _____ _____
BARBOUR _____ _____
Redding _____ _____

COUNTY SANDUSKY DATE 11-29-67
 S. R. # 6 WEATHER FAIR
 SEC. 0.00 Helena TEMP. 35°

DESCRIPTION Ties for Control Points JOB NO. _____

