

# O.D.O.T. DISTRICT 2 SURVEY OFFICE

PERSONNEL \_\_\_\_\_

REFERENCE NO. 6

SHEET 6 OF 26

NOTES HOMAN

DATE 8-12-09

ROUTE US 6

H.C. HOMAN

WEATHER CLOUDY

COUNTY SANDUSKY

R.C. ROUSOS

TEMP. 70°

TOWNSHIP MADISON

SECTION 32

T 5 N R 13 E

TYPE MONUMENT R.R. SPIKE

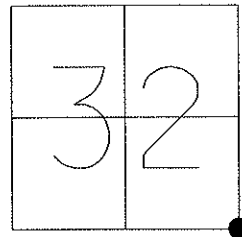
ON SURFACE - ~~BELOW~~ ON

~~LEFT~~ - Q PAV'T - ~~RIGHT~~ ON

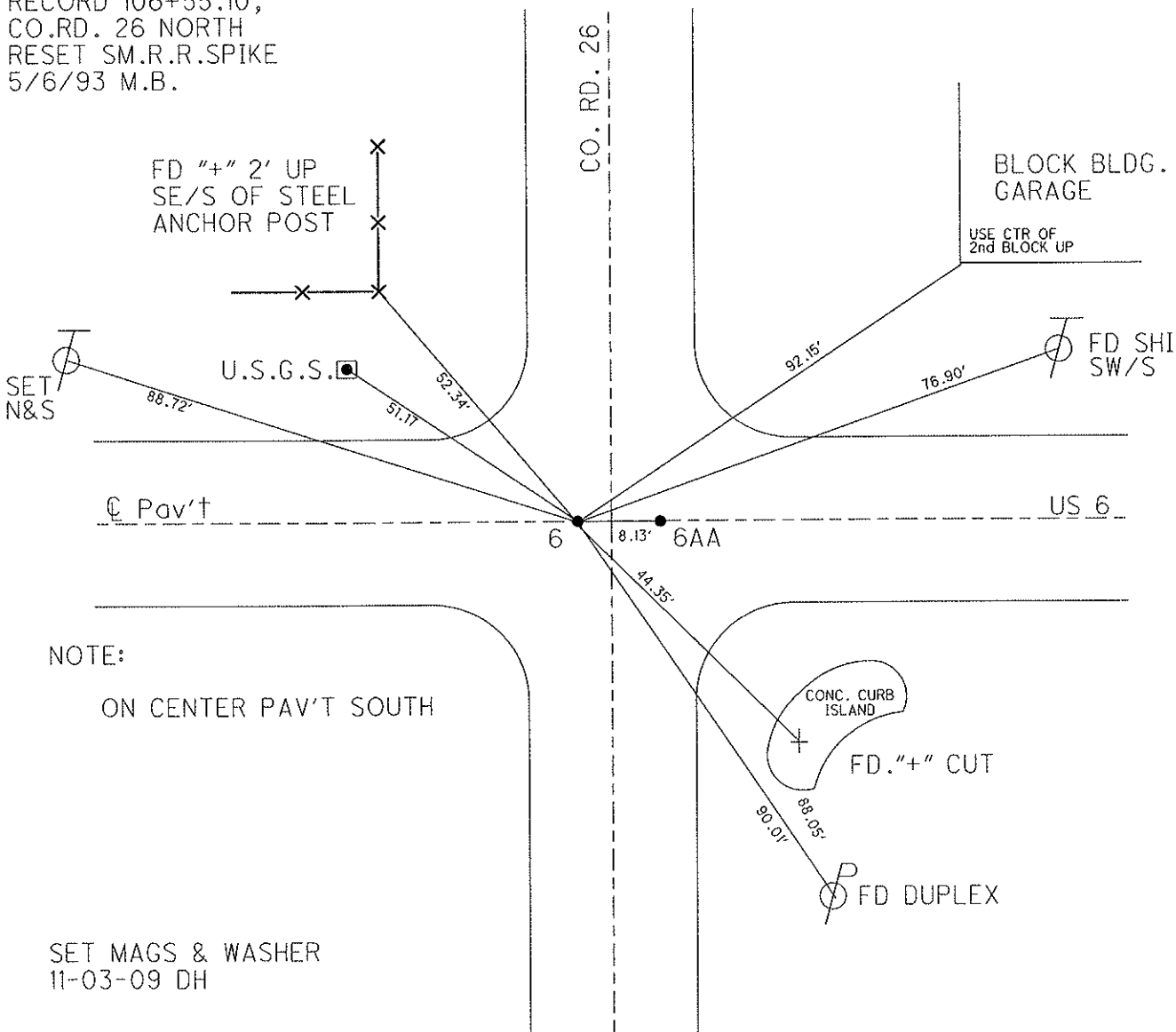
12.4 TORT. EDGE PAVEMENT

S.L.M. 106.70

GPS Northing: 611329.152 Easting: 1727277.200



RECORD 106+55.10,  
CO.RD. 26 NORTH  
RESET SM.R.R.SPIKE  
5/6/93 M.B.



NOTE:

ON CENTER PAV'T SOUTH

SET MAGS & WASHER  
11-03-09 DH

# O.D.O.T. DISTRICT 2 SURVEY OFFICE

PERSONNEL

REFERENCE NO. 6

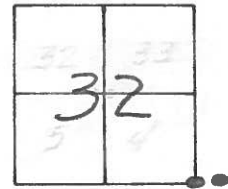
SHEET      OF     

NOTES BARNHISEL  
 H.C. VAN DUSEN  
 R.C. CORDS  
GREEN

DATE 4-6-93  
 WEATHER Cloudy  
 TEMP. +58°

ROUTE US 6  
 COUNTY SANDUSKY  
 TOWNSHIP MADISON  
 SECTION 32  
T5 N R 13 E

TYPE MONUMENT PK & WASHER'S  
 ON SURFACE - ~~BELOW~~ PT (A) YES PT (B) YES  
~~LEFT - & PAV'T. - RIGHT~~ yes yes

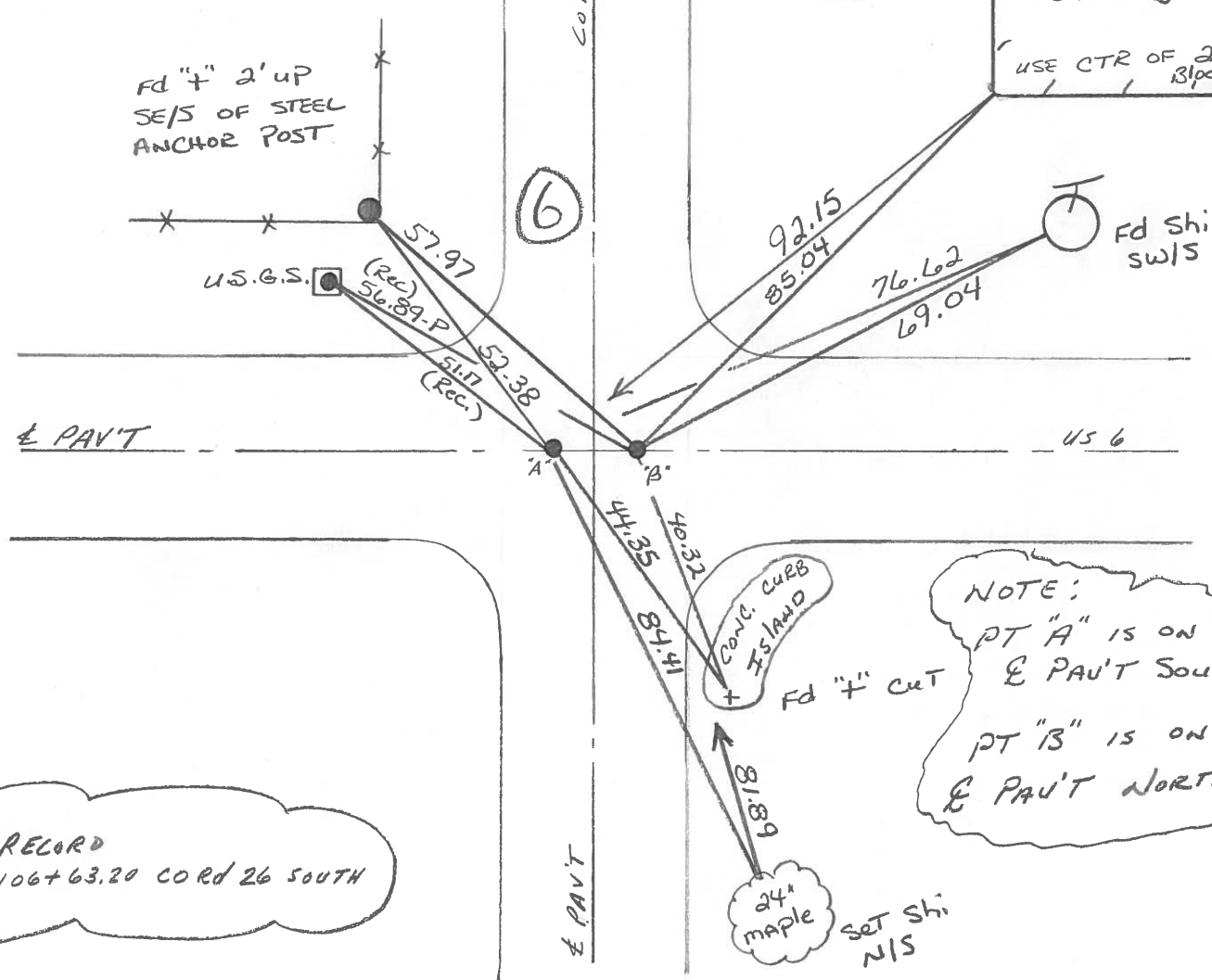


BOTH 12.4 TO RT EDGE PAVEMENT  
 S.L.M. 106+70 8.13 BETWEEN POINTS

A RECORD  
 106+55.10 CORd 26 NORTH

Reset Sm. RR SPK's  
 5-6-93  
 M.B.

Block Bldg.  
 GARAGE  
 USE CTR OF 2<sup>nd</sup> Block up



B RECORD  
 106+63.20 CORd 26 SOUTH

NOTE:  
 PT "A" IS ON  
 & PAV'T SOUTH  
 PT "B" IS ON  
 & PAV'T NORTH

County SANDUSKY S. R. 456

Date 8-30-83

Township MADISON

Weather CLEAR

Section 32

Temp. +80°

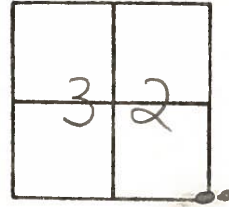
T5N, R13E

Personnel Hoffman

LOHRKE

BARNHISEL

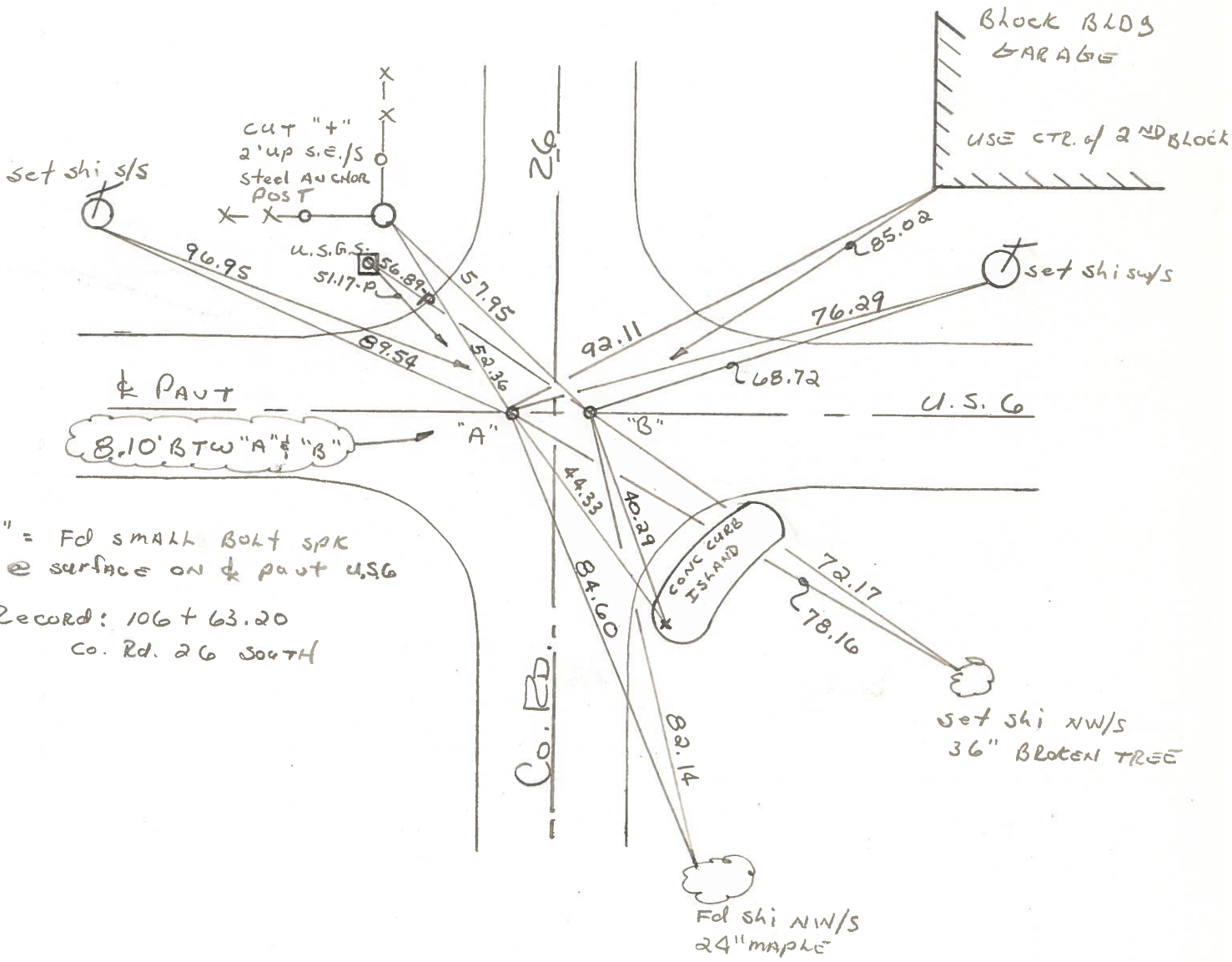
#6



"A" Fd small bolt spk @ surface  
on & PAUT U.S.G  
Record: 106+55.10 Co. Rd 26 NORTH

S.L.M. = 106+80

SET P.K./WASHER  
@ BOTH POINTS  
9/21/83  
S.W.H.



"B" = Fd small bolt spk  
@ surface on & PAUT U.S.G  
Record: 106+63.20  
Co. Rd. 26 SOUTH

8.10' BTW "A" & "B"

PERSONNEL TITLE PERSONNEL TITLE  
Schneider \_\_\_\_\_ Potts \_\_\_\_\_  
MOSSER \_\_\_\_\_ \_\_\_\_\_  
BARBOUR \_\_\_\_\_ \_\_\_\_\_  
Redding \_\_\_\_\_ \_\_\_\_\_

COUNTY SANDUSKY DATE 11-29-67  
 S. R. # 6 WEATHER FAIR  
 SEC. 0.00 Helena TEMP. 35°

DESCRIPTION TIES FOR CONTROL POINTS JOB NO. \_\_\_\_\_

