

O.D.O.T. DISTRICT 2 SURVEY OFFICE

PERSONNEL \_\_\_\_\_

REFERENCE NO. 6AA

SHEET 7 OF 26

NOTES HOMAN

DATE 8-12-09

ROUTE US 6

H.C. HOMAN

WEATHER CLOUDY

COUNTY SANDUSKY

R.C. ROUSOS

TEMP. 70°

TOWNSHIP MADISON

SECTION 32

T 5 N R 13 E

TYPE MONUMENT R.R. SPIKES

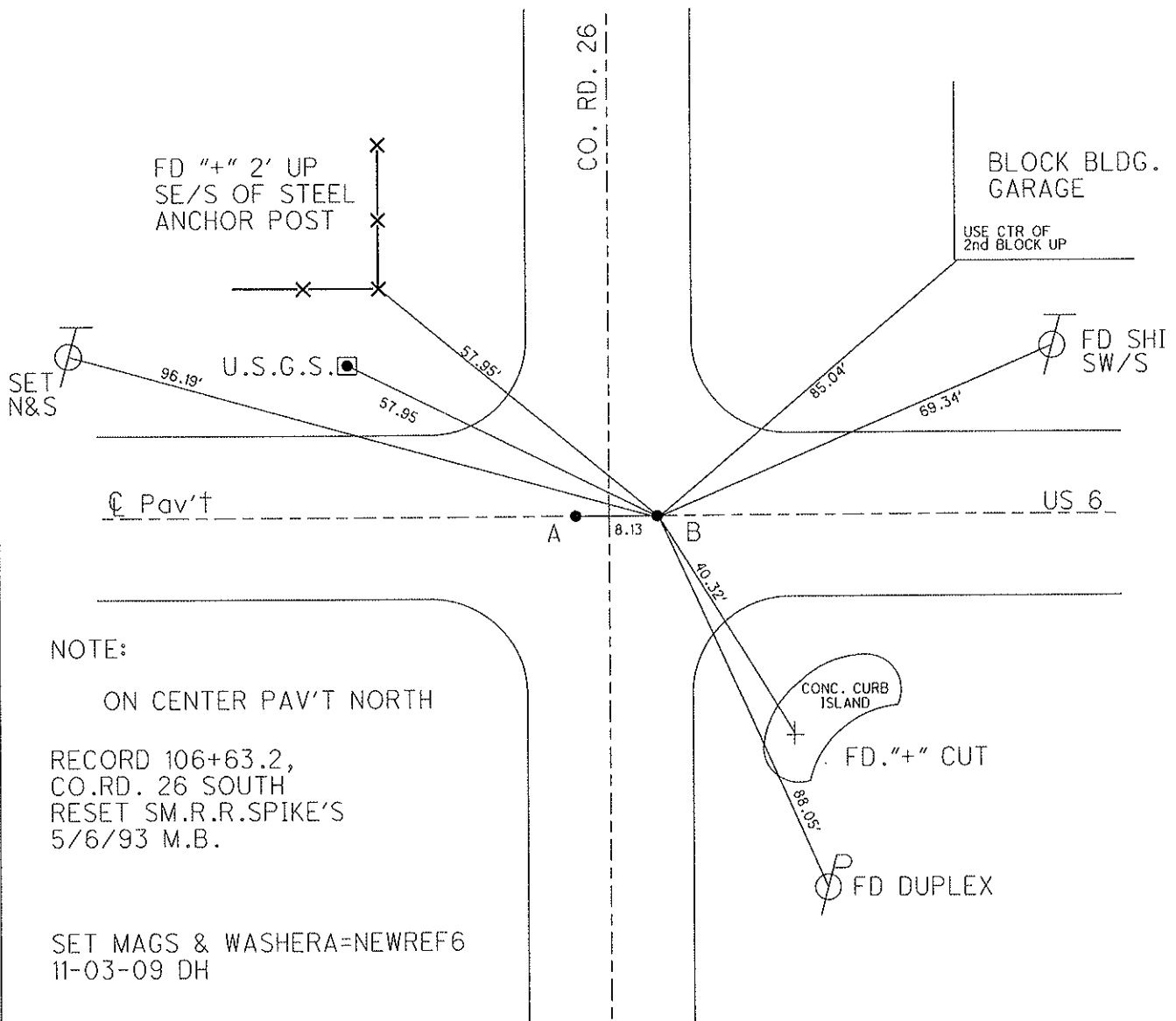
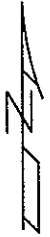
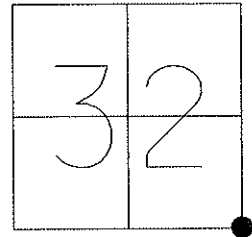
ON SURFACE - ~~BELOW~~ ON

~~LEFT~~ - Q PAV'T - ~~RIGHT~~ ON

12.4 TORT. EDGE PAVEMENT

S.L.M. 106+78.13

GPS Northing: 6611328.999 Easting: 1727285.337



# O.D.O.T. DISTRICT 2 SURVEY OFFICE

PERSONNEL

REFERENCE NO. 6

SHEET      OF     

NOTES BARNHISEL

H.C. VAN DUSEN

DATE 4-6-93

ROUTE US 6

R.C. CORDS

WEATHER Cloudy

COUNTY SANDUSKY

GREEN

TEMP. +58°

TOWNSHIP MADISON

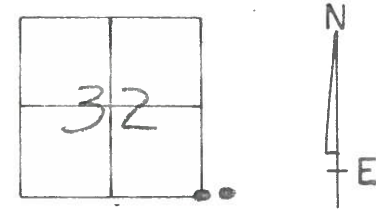
SECTION 32

T 5 N R 13 E

TYPE MONUMENT PK & WASHER'S

ON SURFACE - ~~BELOW~~ PT (A) yes PT (B) yes

~~LEFT~~ - ~~PAV'T.~~ - ~~RIGHT~~ yes yes



BOTH

12.4 TO RT EDGE PAVEMENT

S.L.M. 106+70 8.13 BETWEEN POINTS

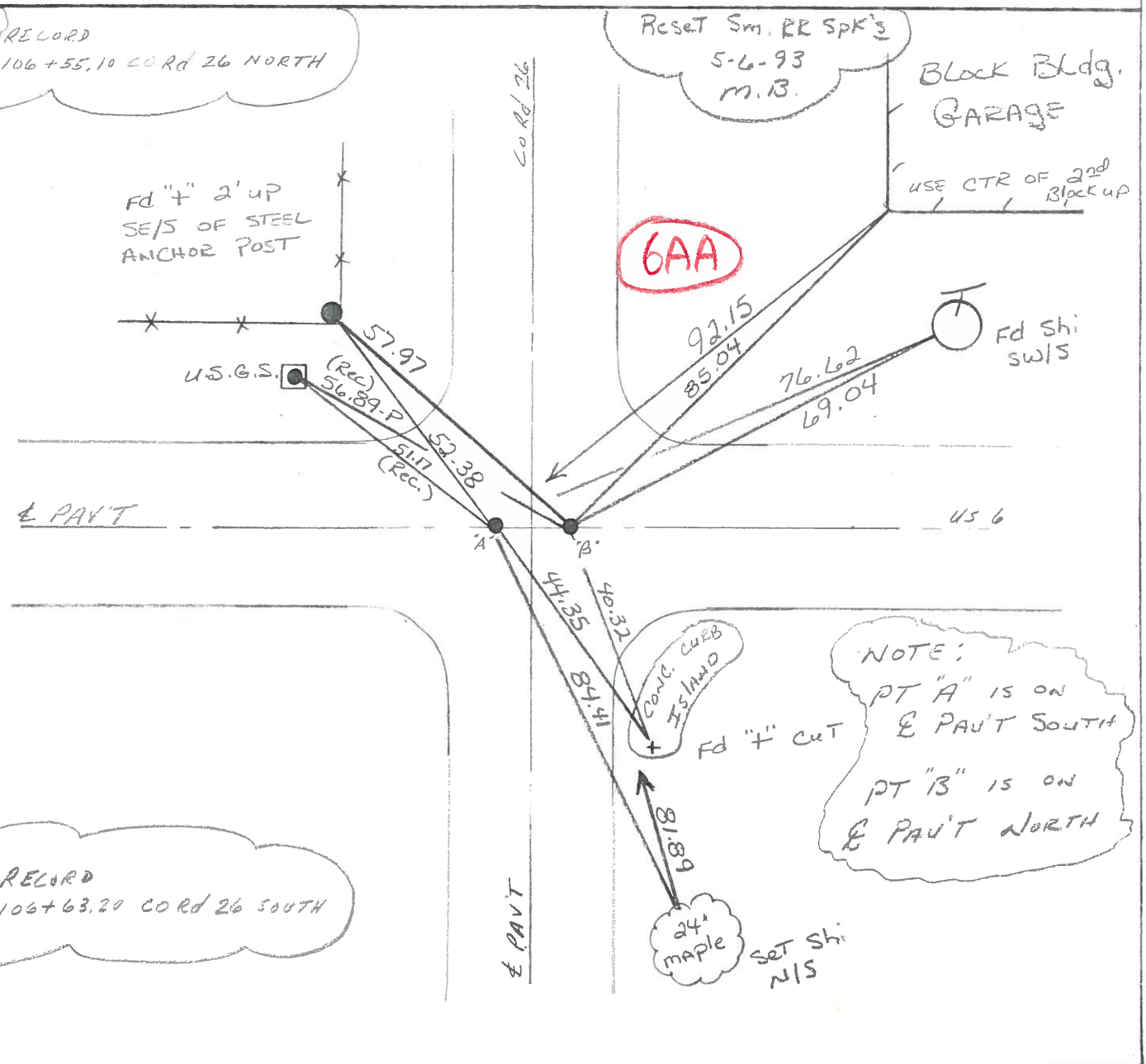
"A" RECORD  
106+55.10 CORD 26 NORTH

Reset Sm. RR SPK'S  
5-6-93  
M.B.

Block Bldg.  
GARAGE  
USE CTR OF 2<sup>nd</sup> Block up

Fd "+" 2' up  
SE/S OF STEEL  
ANCHOR POST

**6AA**



"B" RECORD  
106+63.20 CORD 26 SOUTH

NOTE:  
PT "A" IS ON  
E PAVT SOUTH  
PT "B" IS ON  
E PAVT NORTH

County SANDUSKY S.R. 456

Date 8-30-83

Township MADISON

Weather CLEAR

Section 32

Temp. +80°

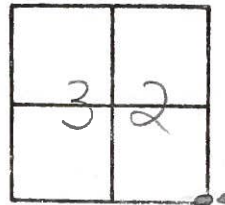
TSN, R/3E

Personnel HOFFMAN

LOHRKE

BARNHISEL

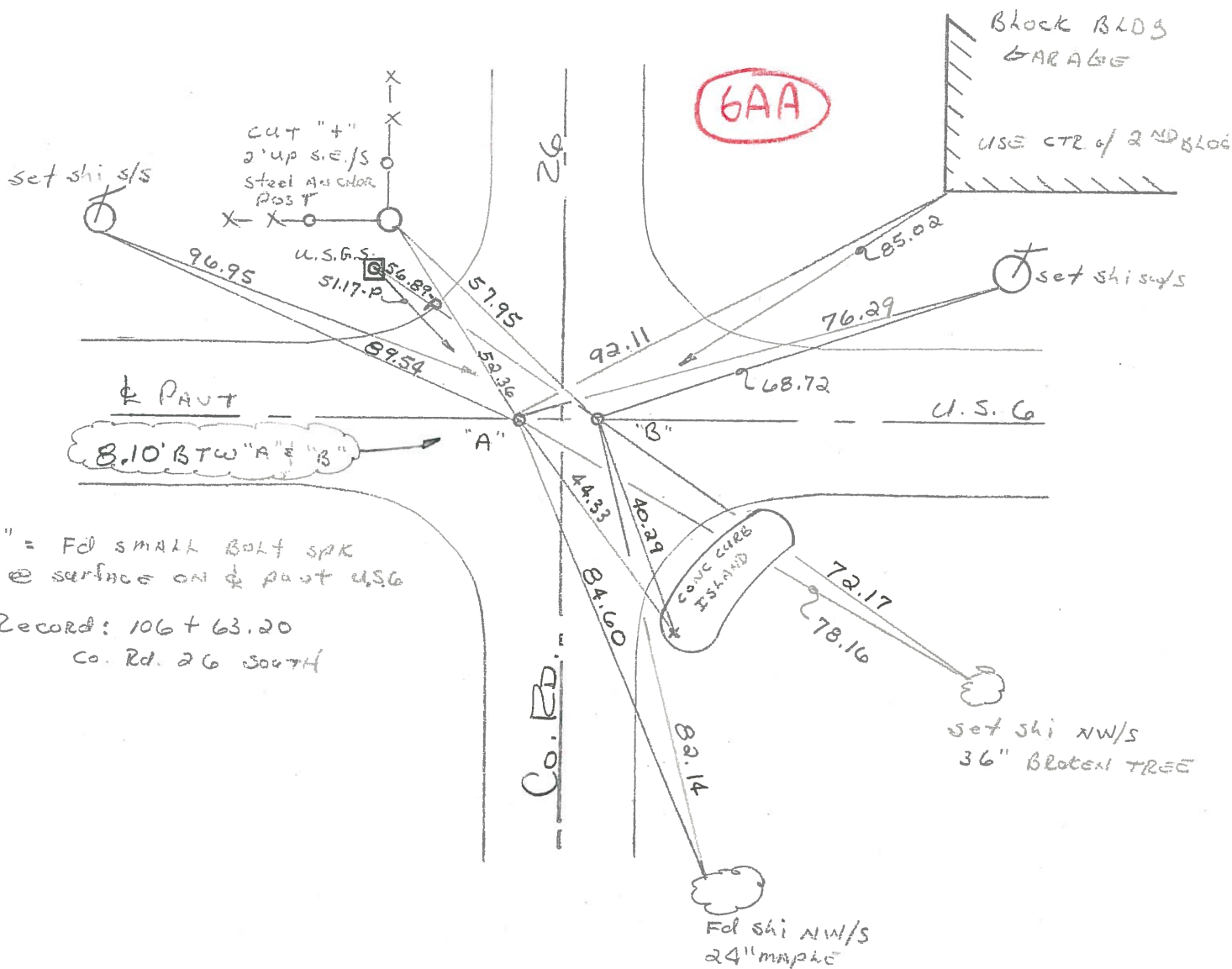
# 6



"A" Fd SMALL Bolt spk @ surface  
on & PAUT U.S.G  
Record: 106+55.10 Co. Rd 26 NORTH

S.L.M. = 106+780

SET P.K/WASHER  
@ BOTH POINTS  
9/21/83  
S.W.H.



"B" = Fd SMALL Bolt spk  
@ surface on & PAUT U.S.G  
Record: 106+63.20  
Co. Rd. 26 SOUTH

PERSONNEL TITLE PERSONNEL TITLE  
 Schneider \_\_\_\_\_ Potts \_\_\_\_\_  
 MOSSER \_\_\_\_\_  
 BARBOUR \_\_\_\_\_  
 Redding \_\_\_\_\_

COUNTY SANDUSKY DATE 11-29-67

S. R. # 6 WEATHER FAIR

SEC. 0.00 Helena TEMP. 35°

DESCRIPTION TIES FOR CONTROL POINTS

JOB NO. \_\_\_\_\_

