

O.D.O.T. DISTRICT 2 SURVEY OFFICE

PERSONNEL \_\_\_\_\_

REFERENCE NO. 6-B

SHEET 9 OF 26

NOTES HOMAN

DATE 8-12-09

ROUTE US 6

H.C. HOMAN

WEATHER CLOUDY

COUNTY SANDUSKY

R.C. ROUSOS

TEMP. 75°

TOWNSHIP MADISON

SECTION 33

T 5 N R 13 E

TYPE MONUMENT IRON PIN IN CONC.

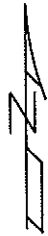
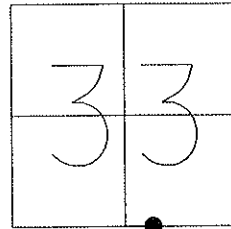
ON SURFACE - ~~BELOW~~ ON

LEFT - Q PAV'T - ~~RIGHT~~ 0.6"

11.8 TOLT. EDGE PAVEMENT

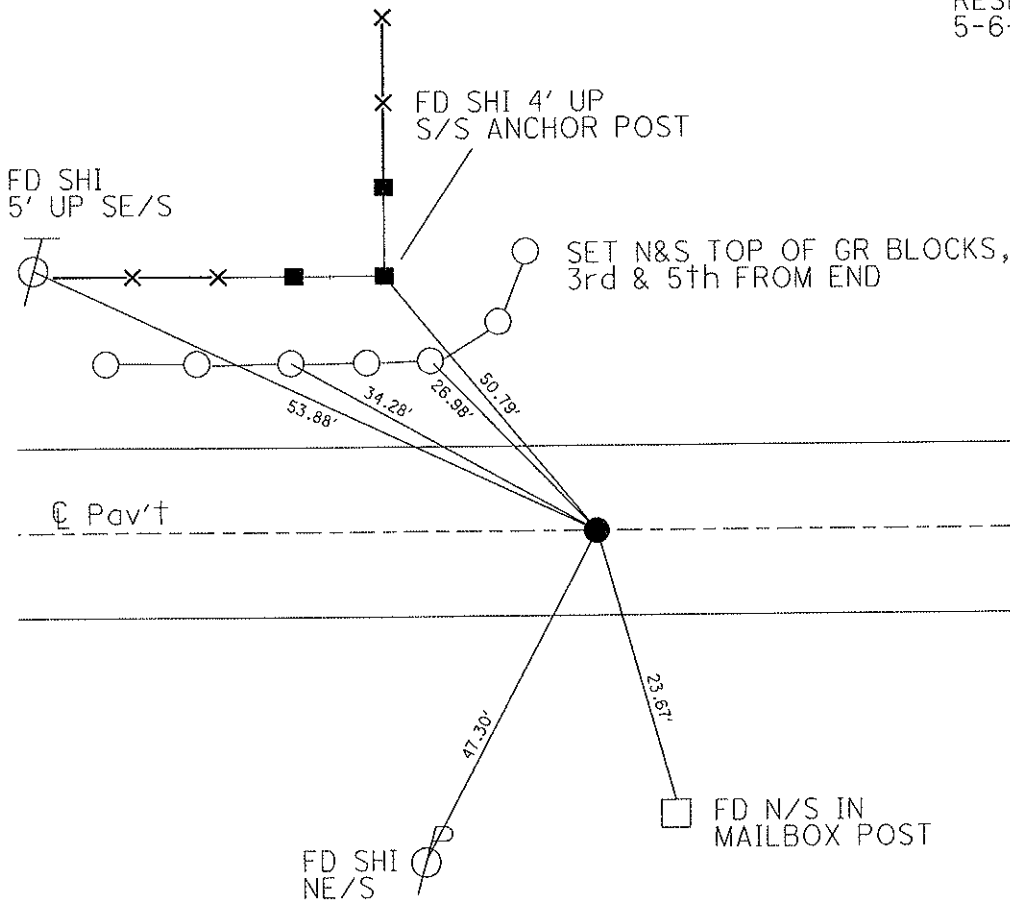
S.L.M. 133+29

GPS Northing: 611300.1151 Easting: 1729917.0445



RECORD: P.I.=132+96.14

RESET SM R.R. SPIKE  
5-6-93 M.B.



# O.D.O.T. DISTRICT 2 SURVEY OFFICE

PERSONNEL

REFERENCE NO. 6-B

SHEET      OF     

NOTES BARNHISEL

H.C. VAN DUSEN

DATE 4-6-93

ROUTE US 6

R.C. CORDS

WEATHER cloudy

COUNTY SANDUSKY

GREEN

TEMP. +52°

TOWNSHIP MADISON/SCOTT

SECTION 33

T 5 N R 13 E

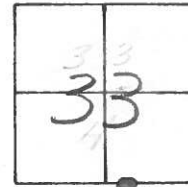
TYPE MONUMENT PK & WASHER

ON SURFACE - ~~BELOW~~ YES

LEFT- ~~& PAV'T.~~ - ~~RIGHT~~ 0.6

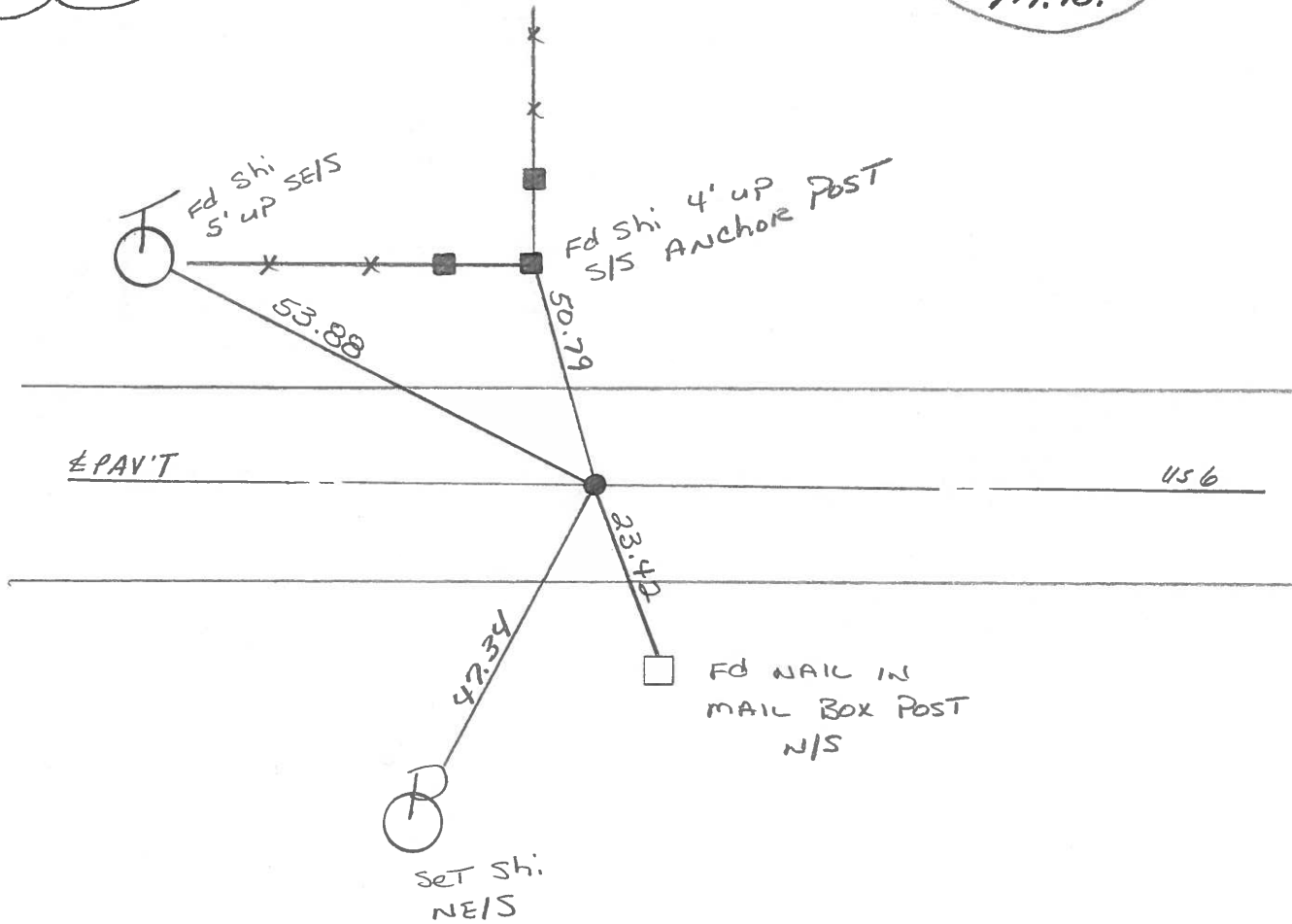
11.8 TO LT EDGE PAVEMENT

S.L.M. 133+29



RECORD: P.I.  
132+96.14

Reset Sm. RR Spk.  
5-6-93  
M.B.



County SANDUSKY S.R. U.S. 6

Date 8-30-83

Township MADISON

Weather CLEAR

Section 33

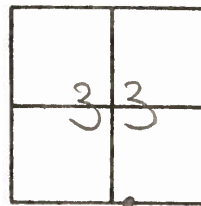
Temp. +80°

T5N, R13E

Personnel Hoffman

LOENRKE

BARNHISEL

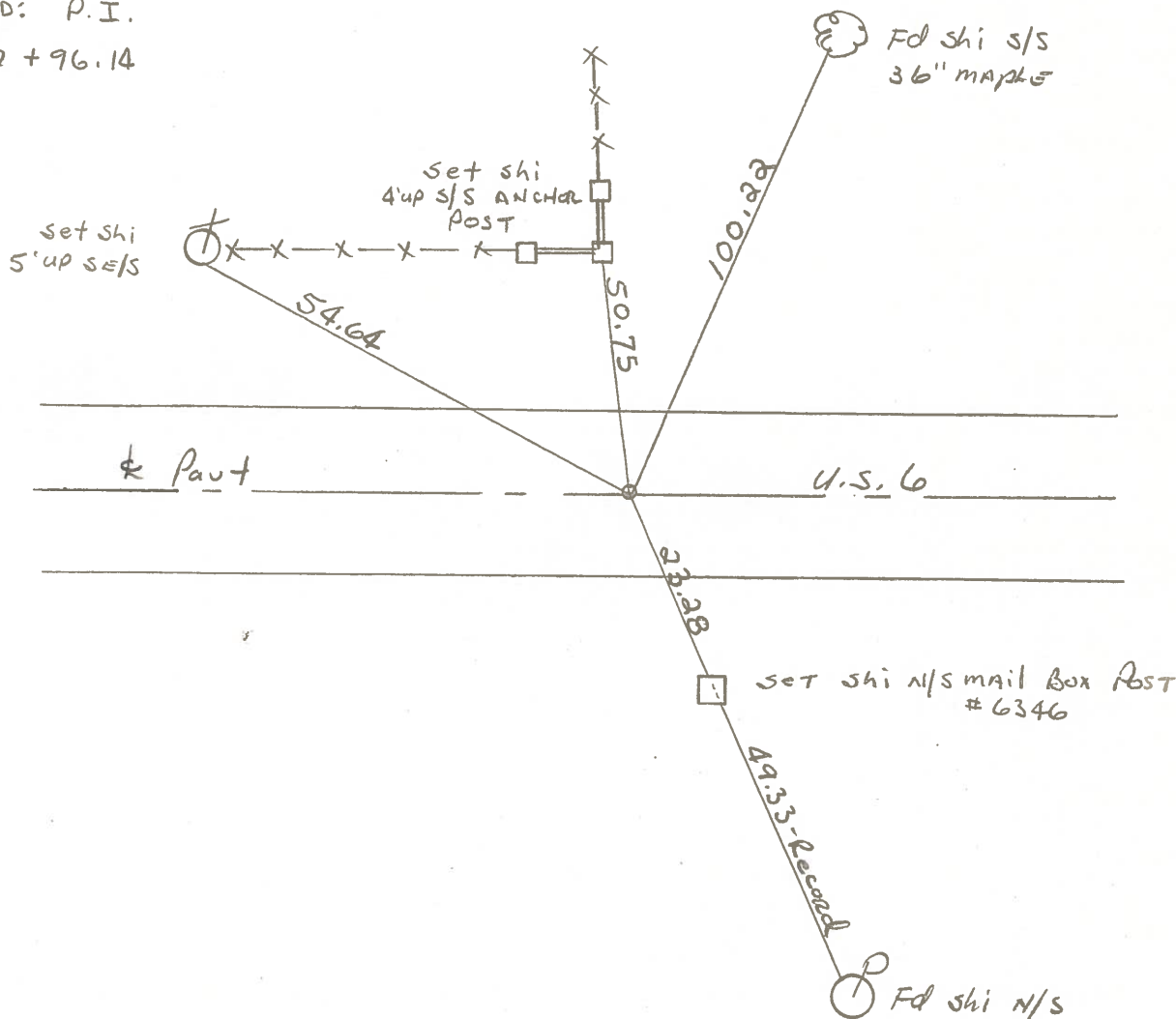


# 6-B

Fd small boat spk @ surface  
on & part

S.L.M. = 133 + 29  
SET P.K./WASHER  
9/21/83  
S.W.H.

Record: P.I.  
132 + 96.14



PERSONNEL	TITLE	PERSONNEL	TITLE	COUNTY	DATE
<u>Schneider</u>		<u>Potts</u>		<u>Sandusky</u>	<u>Dec-1967</u>
<u>Mosser</u>				S. R. <u>U.S. # 6</u>	WEATHER
<u>Barbour</u>				SEC. <u>Fremont-East</u>	TEMP.
<u>Redding</u>					
DESCRIPTION	<u>Ties for Control Points</u>				JOB NO.

