

O.D.O.T. DISTRICT 2 SURVEY OFFICE

PERSONNEL _____

REFERENCE NO. 7

SHEET 10 OF 26

NOTES HOMAN

DATE 8-12-09

ROUTE US 6

H.C. HOMAN

WEATHER CLOUDY

COUNTY SANDUSKY

R.C. ROUSOS

TEMP. 75°

TOWNSHIP MADISON

SECTION 33

T 5 N R 13 E

TYPE MONUMENT R.R. SPIKE

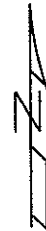
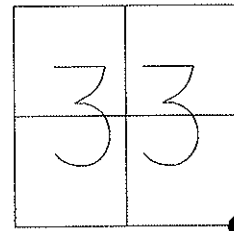
ON SURFACE - ~~BELOW~~ ON

~~LEFT~~ - Q PAV'T - ~~RIGHT~~ ON

12.4 TOLT. EDGE PAVEMENT

S.L.M. 159 + 38

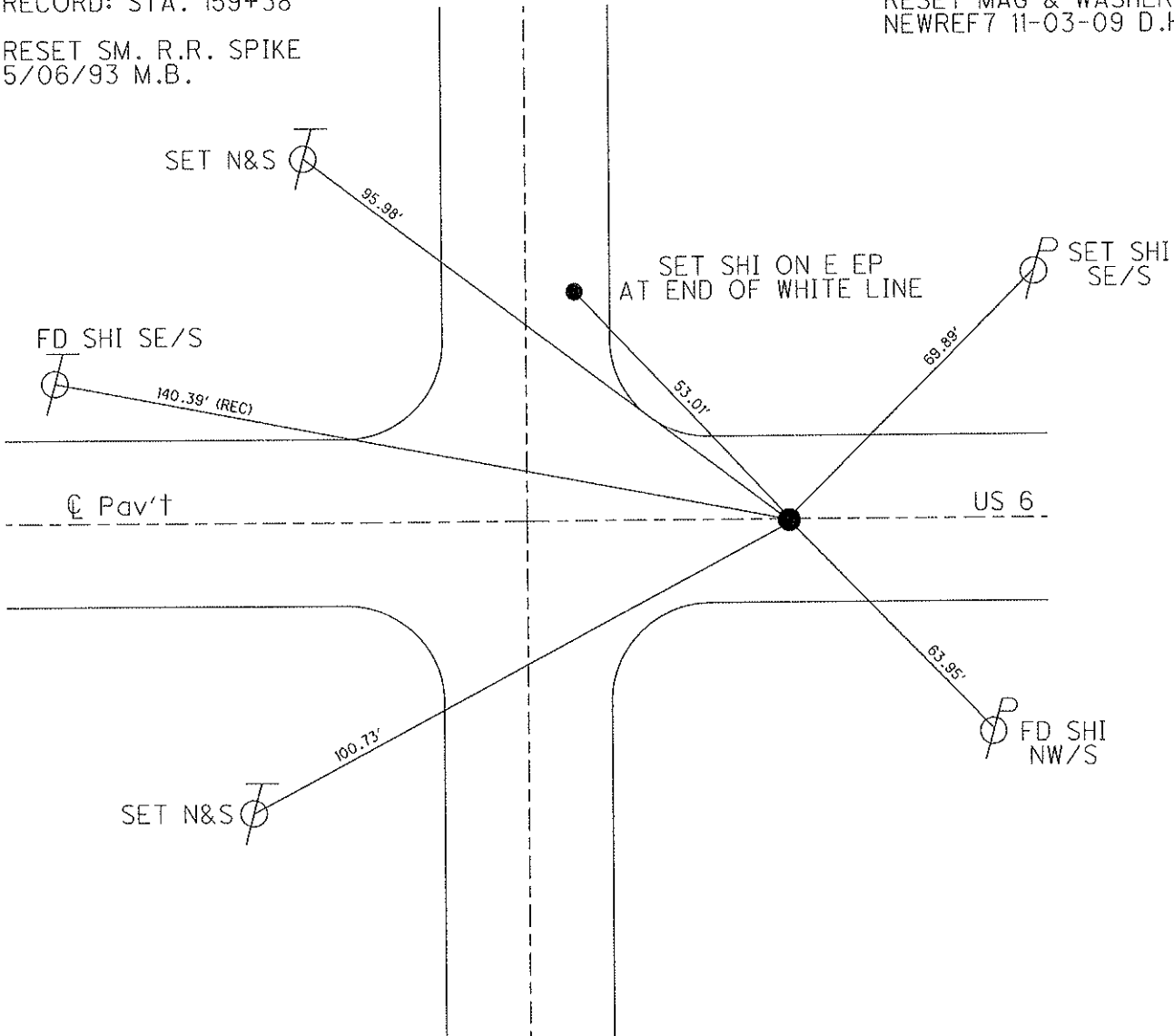
GPS Northing: 611254.814 Easting: 1732519.867



RECORD: STA. 159+38

RESET SM. R.R. SPIKE
5/06/93 M.B.

RESET MAG & WASHER
NEWREF7 11-03-09 D.H.



O.D.O.T. DISTRICT 2 SURVEY OFFICE

PERSONNEL

REFERENCE NO. 7

SHEET OF

NOTES BARNHISEL

H.C. VAN DUSEN

R.C. CORDES

DATE 4-21-93

WEATHER Cloudy

TEMP. +37°

ROUTE US 6

COUNTY SANDUSKY

TOWNSHIP MADISON

SECTION 33

T 5 N R 13 E

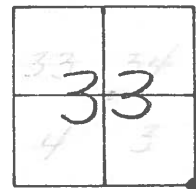
TYPE MONUMENT P.K. + Washer

ON SURFACE - ~~BELOW~~ yes

~~LEFT - & PAV'T. - RIGHT~~ yes

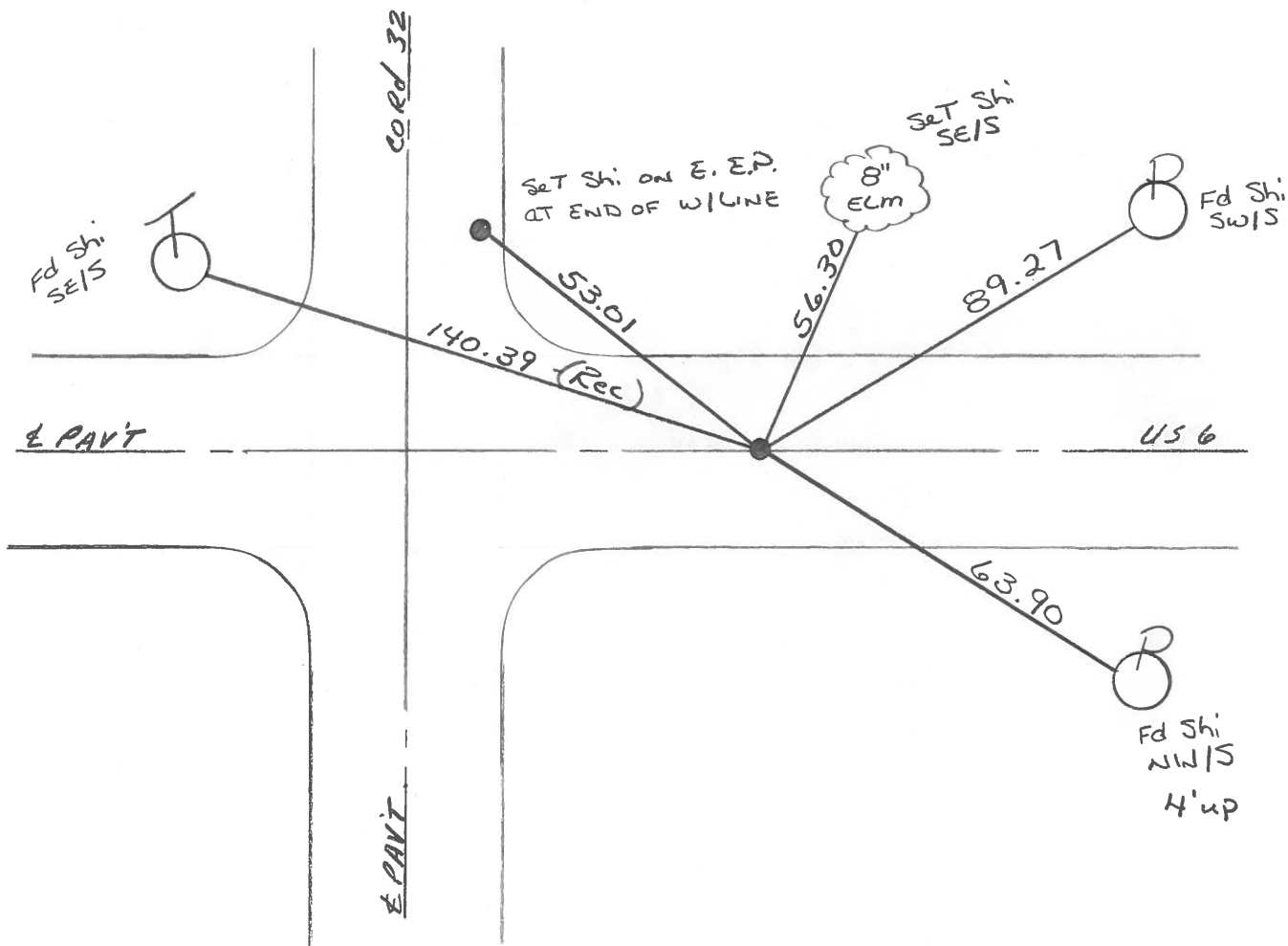
12.4 TO RT EDGE PAVEMENT

S.L.M. 159+38



RECORD: 159+00

Reset Sm. RR Spk.
M.B.
5-6-93



County SANDUSKY S.R. U.S. 6

Date 8-30-83

Township MADISON

Weather CLEAR

Section 33

Temp. +80°

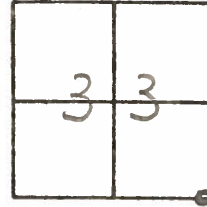
T5N, R13E

Personnel Hoffman

LOEHRKE

BARANISEL

7

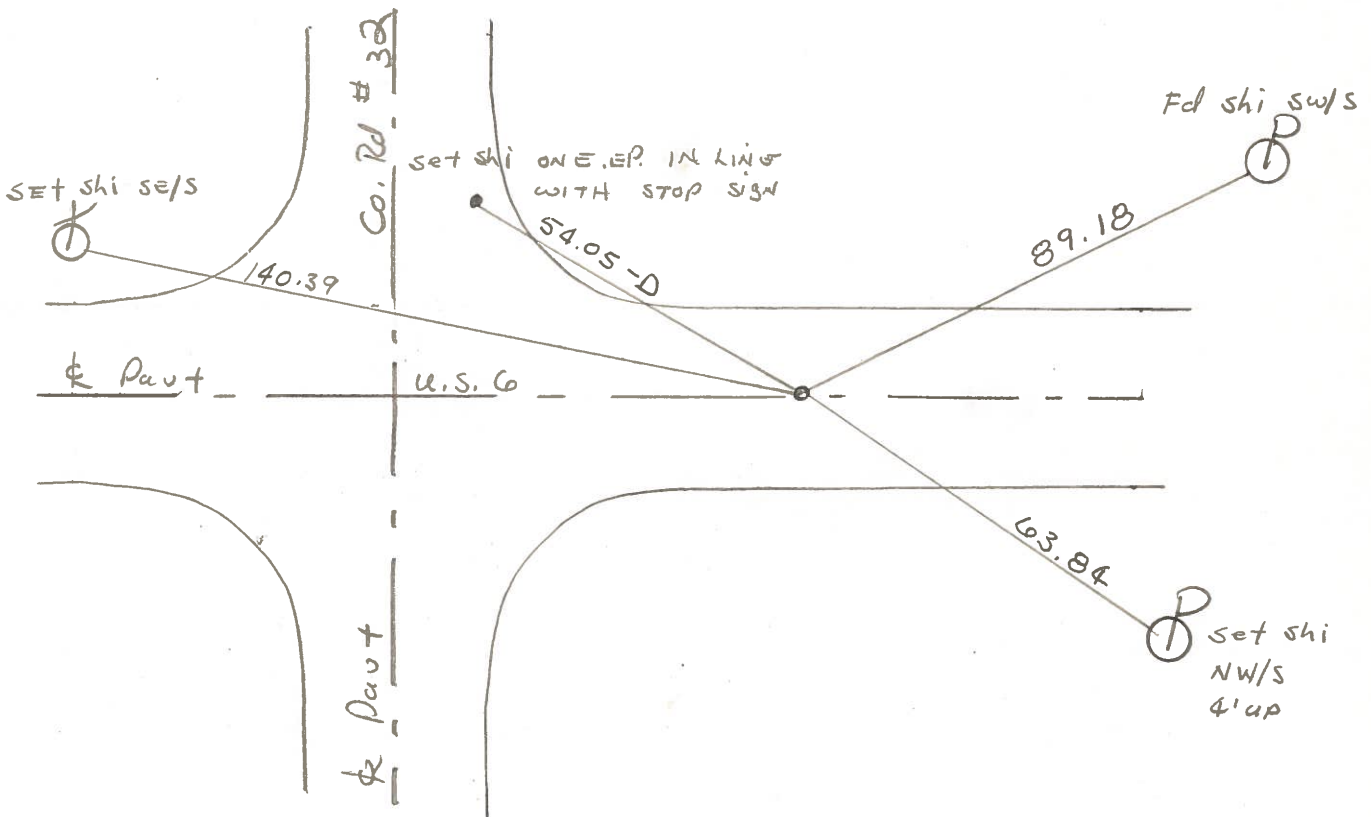


Fd SMALL Bolt SPK @ SURFACE on & Pavt U.S. 6

SLM = 159+37

SET P.K./WASHER
9/21/83
S.W.H.

Record:
159+00



PERSONNEL TITLE PERSONNEL TITLE COUNTY Sandusky DATE Dec-1967
Schneider Potts
Mosser U.S. # 6 WEATHER _____
Barbour _____
Redding _____ SEC. Fremont-East TEMP. _____
 DESCRIPTION Ties for Control Points JOB NO. _____

